

Supplemental materials

**A sensitive monoclonal antibody-based ELISA integrating with an
immunoaffinity column extraction for the detection of
zearalenone in food and feed samples**

Ting Wang^a, Ting Zhou^a, Kang Wu^{b*}, Junlin Cao^a, Yuze Feng^a, Jianguo Li^{a,*},
Anping Deng^{a,*}

^a College of Chemistry, Chemical Engineering & Materials Science, Soochow
University, Renai Road 199, Suzhou 215123, China

^b School of Biology & Basic Medical Science, Soochow University, Renai Road
199, Suzhou, 215123, China

* Corresponding authors: Tel: +86 512 65884630; Fax: +86 512 65884630

e-mail: wukang650202@163.com; lijgsd@suda.edu.cn;

denganping@suda.edu.cn

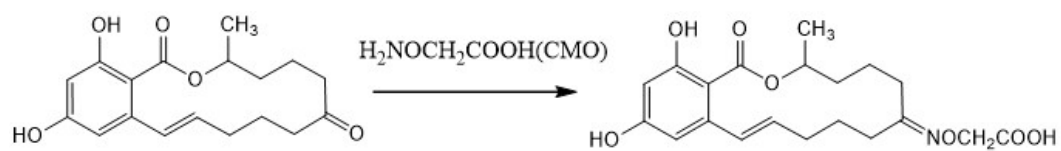


Fig. S1. Synthesis of ZEN-CMO

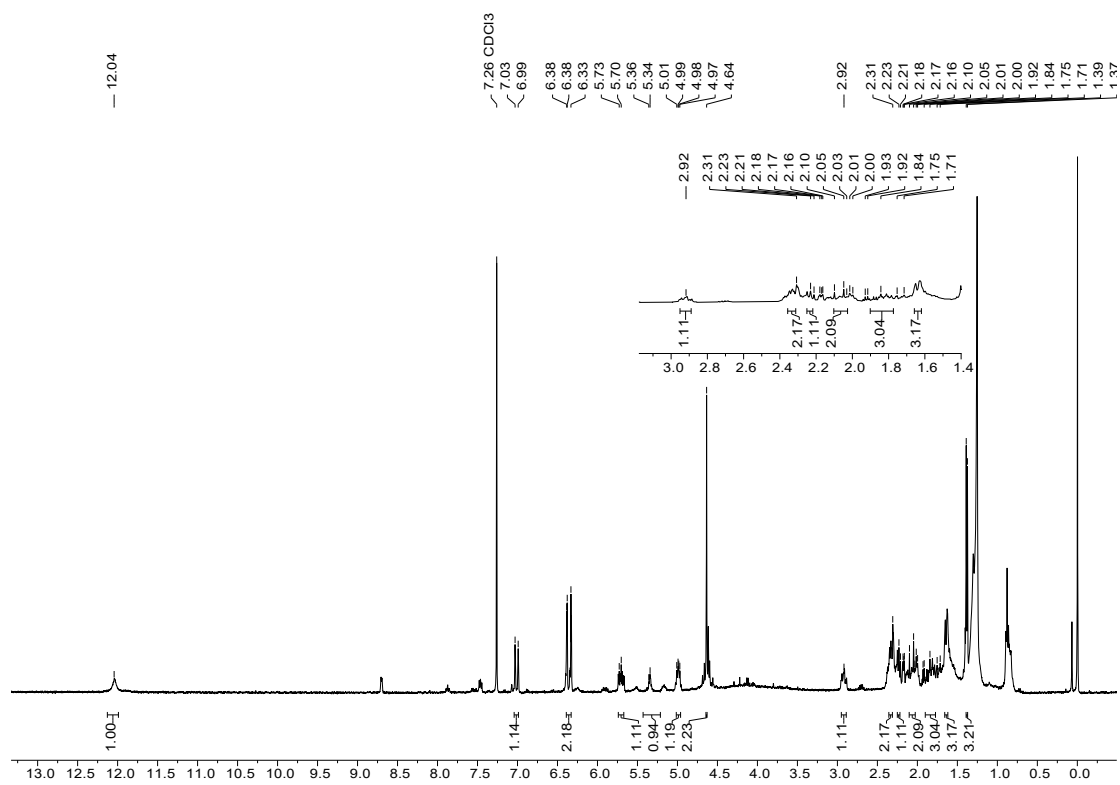


Fig. S2. NMR spectrum of ZEN-COM

Table S1. The contents of ZEN in 12 real samples measured by ELISA

Sample ^a	Conc. Measured ±SD (ng/g)	RSD (%) (n=3)
1	52.62 ± 4.43	8.42
2	53.97 ± 3.72	6.45
3	54.93 ± 2.22	3.70
4	54.60 ± 2.55	4.58
5	66.28 ± 5.73	8.65
6	127.07 ± 6.17	4.20
7	33.33 ± 2.42	6.92
8	173.78 ± 13.43	7.73
9	168.68 ± 10.52	5.96
10	277.67 ± 14.67	4.57
11	214.47 ± 10.47	4.88
12	458.23 ± 44.73	9.76

^a Samples 1-4, 5-8 and 9-12 are the corn flour, wheat flour and animal feed samples purchased from the local market.