

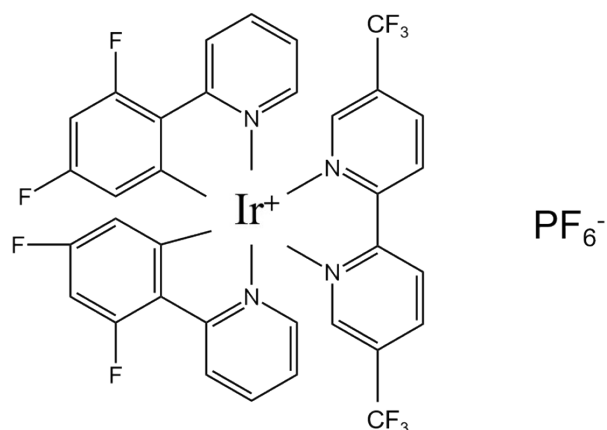
## **Supporting Materials**

### **Electrochemiluminescence of iridium complex doped with SiO<sub>2</sub> nanoparticles to detect 2-adamantanamine based on the host-guest interaction of cucurbit[7]uril**

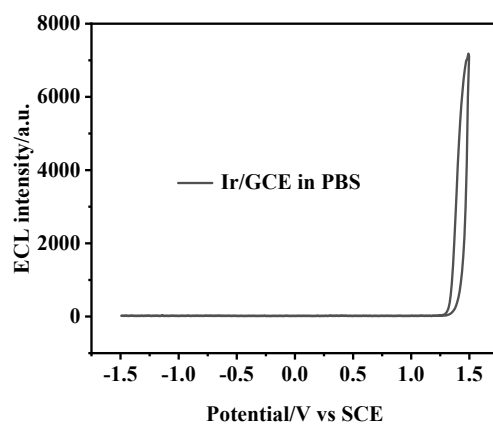
Yahui Zhang, Haifeng Yao, Yongping Dong\*

*School of Chemistry and Chemical Engineering, Anhui University of Technology, Maanshan,*

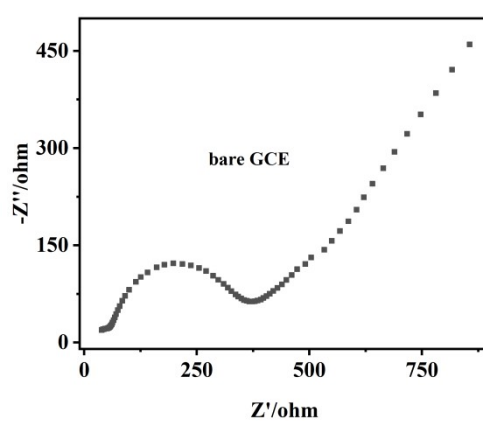
*Anhui 243002, China*



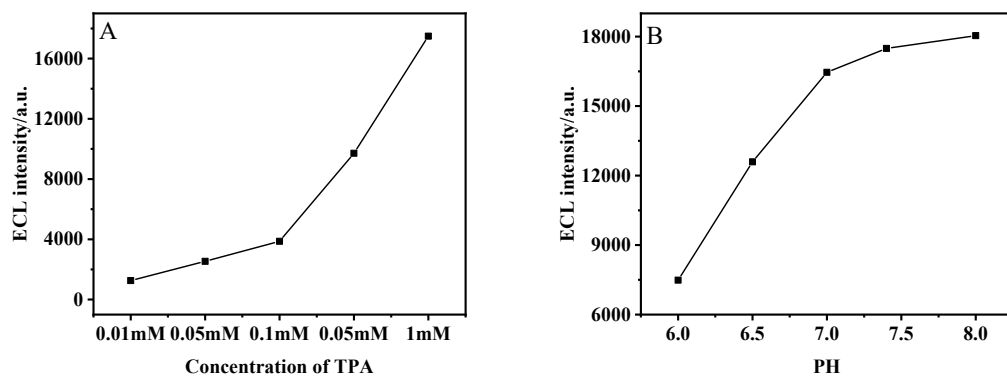
**Fig.S1** Chemical structures of  $\text{Ir}[(\text{dFppy})_2(\text{d}(\text{CF}_3)\text{bpy})](\text{PF}_6)_3$ .



**Fig.S2** ECL curve of iridium complex modified electrode in pH 7.4 0.1 mol L<sup>-1</sup> PBS.



**Fig.S3** EIS of a bare GCE in 0.1 mol L<sup>-1</sup> KCl solution containing 5 mM K<sub>3</sub>[Fe(CN)<sub>6</sub>]/ K<sub>4</sub>[Fe(CN)<sub>6</sub>].



**Fig.S4** Effects of TPA concentration (A) and pH value (B) on ECL intensity.