

Electronic supplementary information

Electrochemical biosensing based on folic acid-triazine-grafted reduced graphene oxide: a highly selective breast cancer cells sensor

Abdollah Yari,^{*a} Foroozan Shokri ^a

^a*Faculty of Chemistry, Lorestan University 68151-44316, Khorramabad, Iran.*

*Corresponding author. Tel/Fax +986633120612, Email a.yari@ymail.com or yari.a@lu.ac.ir

Contents

Fig. S1. The SEM images of the surface of GCE, RGOTrz, FA and FA-RGOTrz, at two different scales of 2 mm (upper row) and 500 nm (lower row).

Fig. S2. The EDX patterns for RGOTrz, FA and FA-RGOTrz including the corresponding elemental content tables (insets).

Fig. S3. XRD analysis of dried RGOTrz, FA and FA-RGOTrz.

Fig. S4. Absorbance spectra of FA (a), RGOTrz (b) and FA-RGOTrz (c) in water.

Fig. S5. FT-IR spectra of RGOTrz (A), FA (B) and FA-RGOTrz (C).

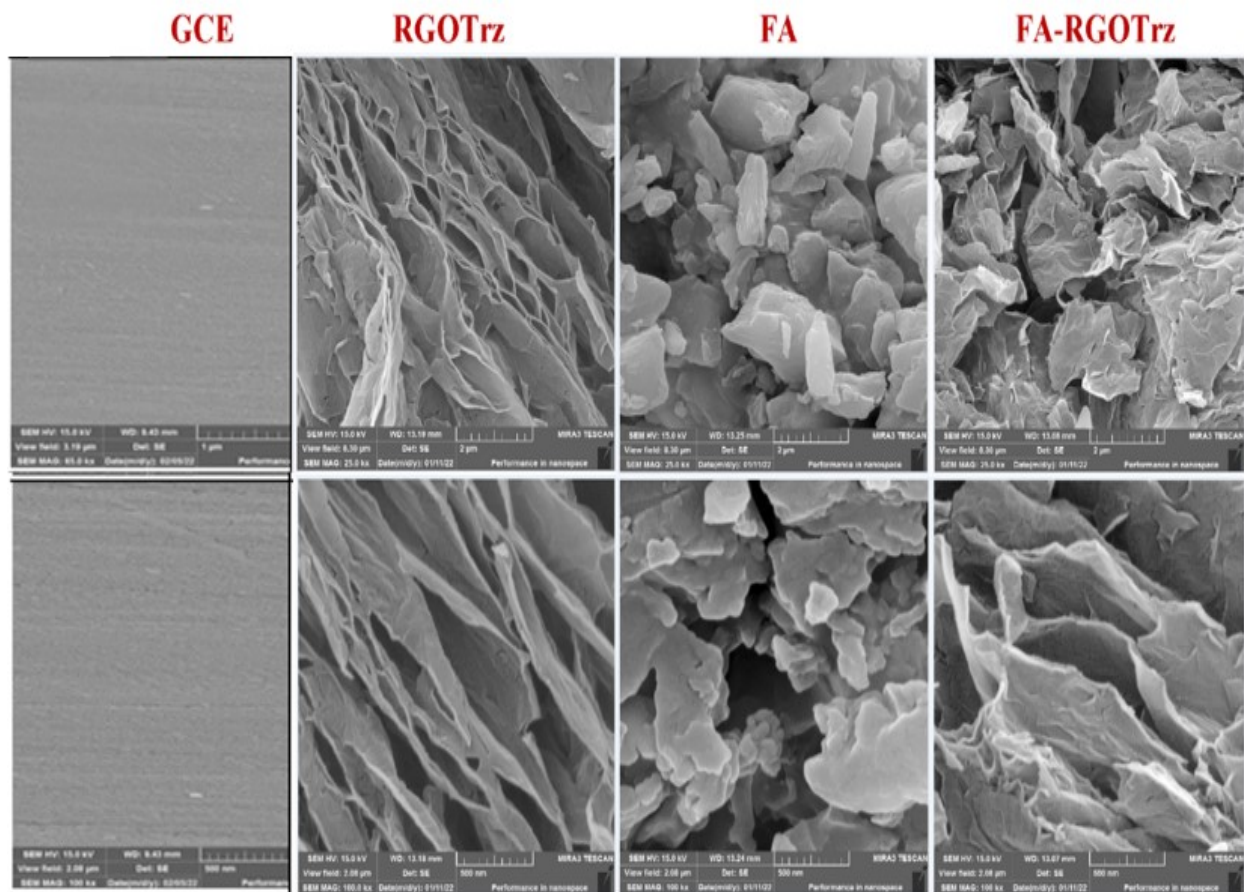


Fig. S1. The SEM images of the surface of GCE, RGOTrz, FA and FA-RGOTrz, at two different scales of 2 μm (upper row) and 500 nm (lower row).

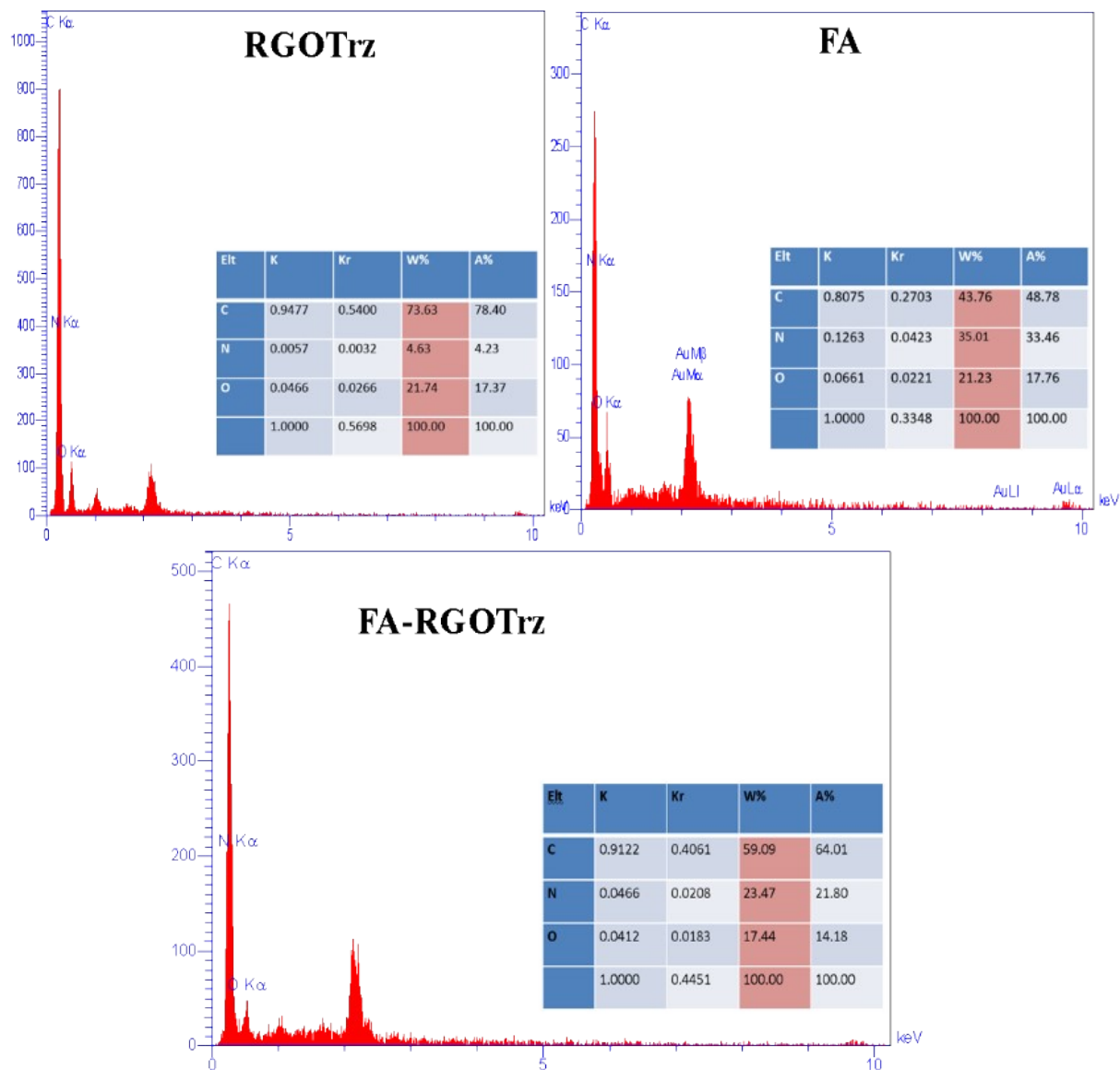


Fig. S2. The EDX patterns for RGOTrz, FA and FA-RGOTrz including the corresponding elemental content tables (insets).

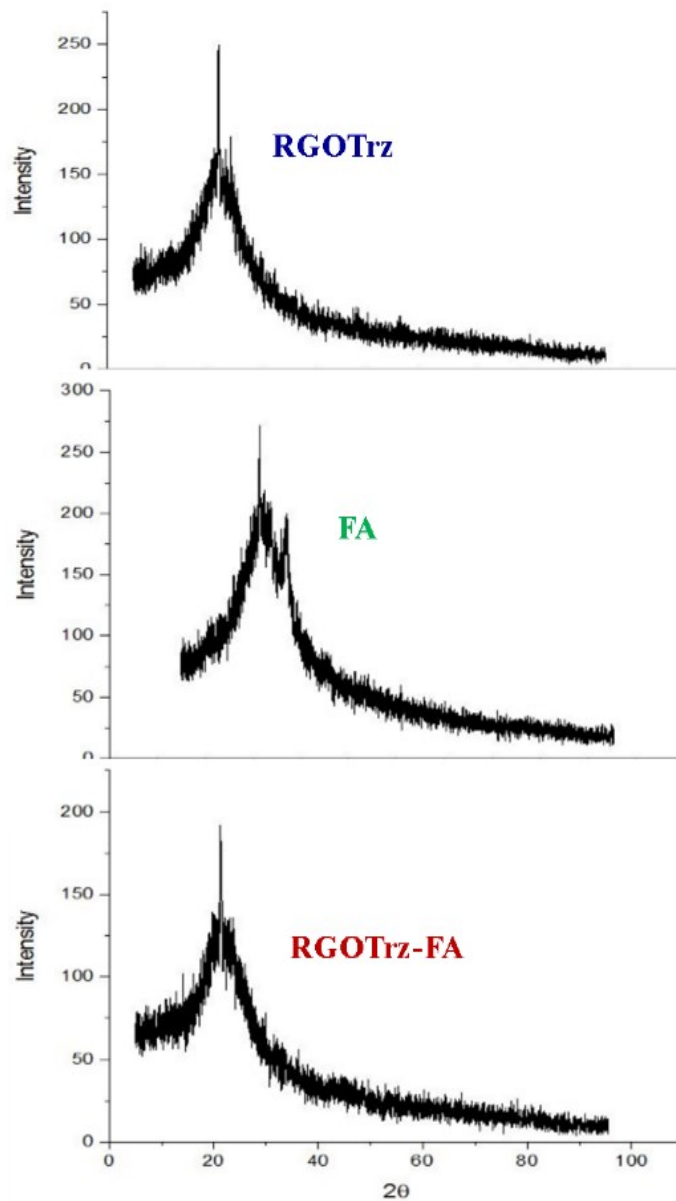


Fig. S3. XRD analysis of dried RGOTrz, FA and FA-RGOTrz.

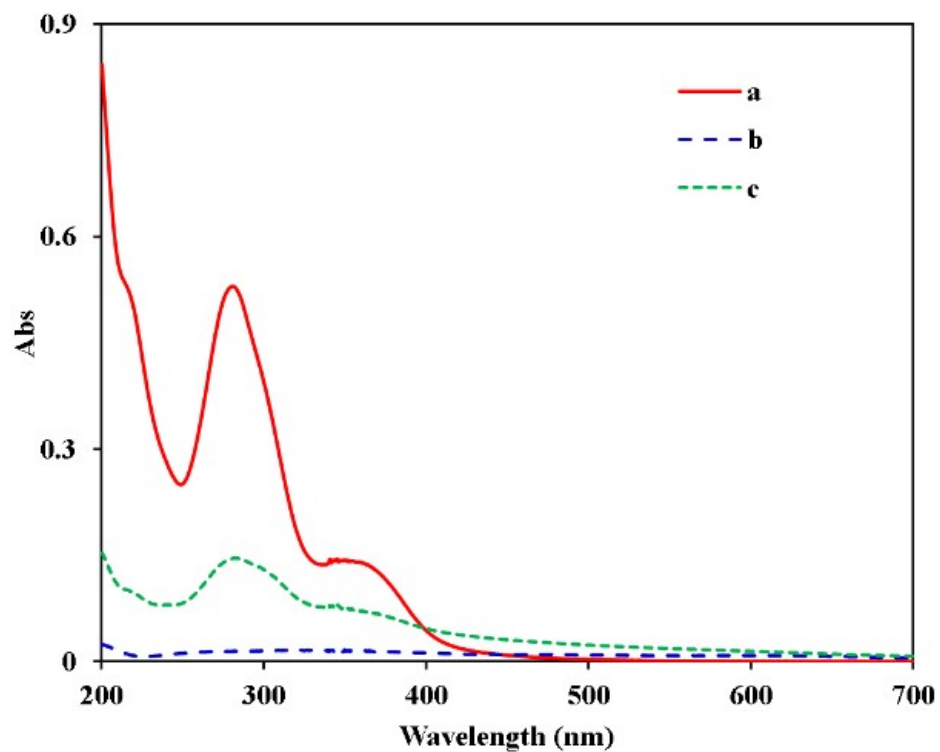


Fig. S4. Absorbance spectra of FA (a), RGOTrz (b) and FA-RGOTrz (c) in water.

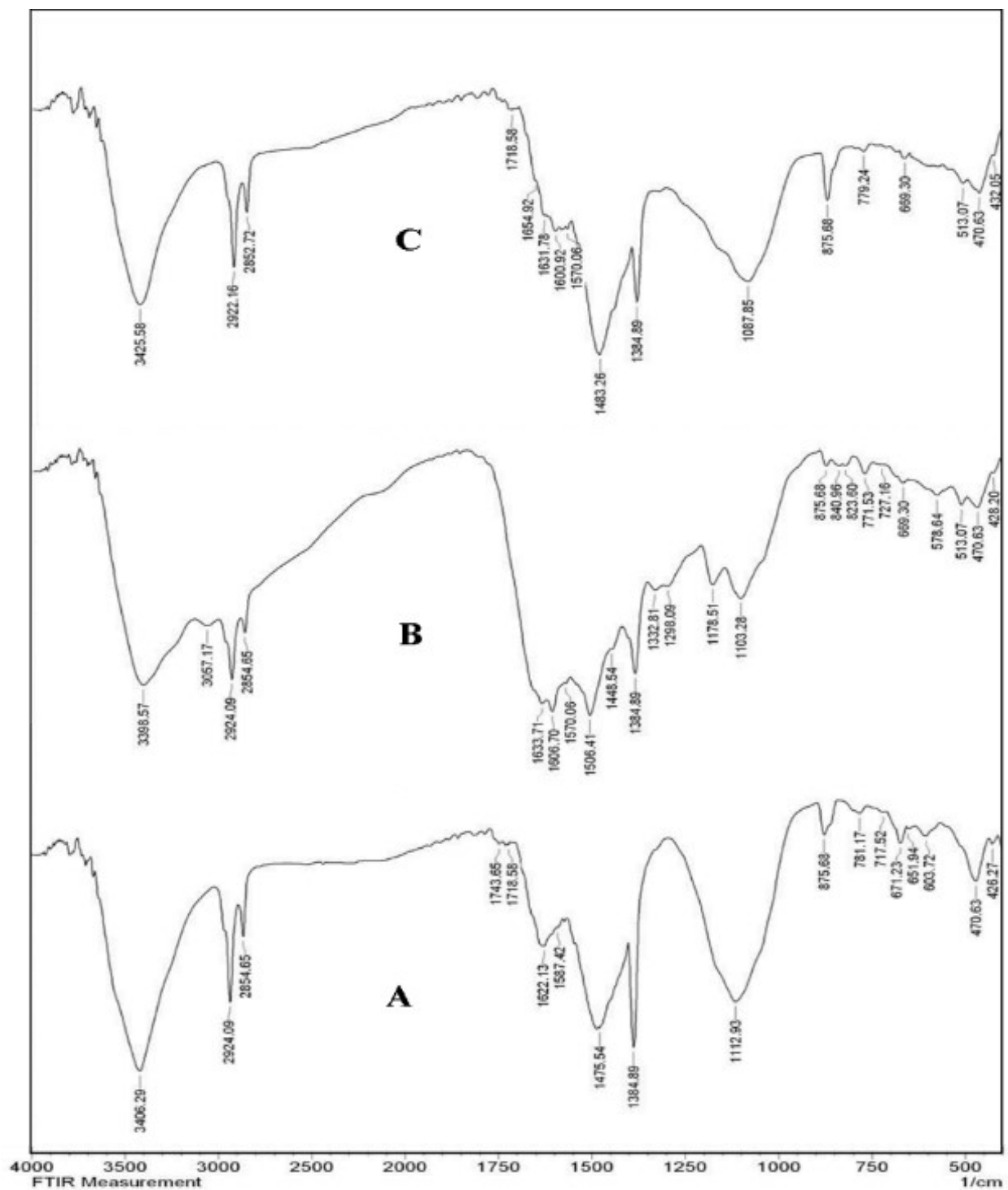


Fig. S5. FT-IR spectra of RGOTrz (A), FA (B) and FA-RGOTrz (C).