

## Supporting Information

### **AgPd NPs-based Lateral flow immunoassay for simultaneous detection of glycocholic acid and alpha-fetoprotein**

Shilin Jiang; †<sup>a</sup> Yaqiong Chen; †<sup>b</sup> Jinhui Liang; <sup>a</sup> Huanxin Xiao; <sup>a</sup> Mingxia Lin;<sup>a</sup>  
Xiping Cui <sup>a,\*</sup> and Suqing Zhao<sup>a,\*</sup>

<sup>a</sup> Department of Pharmaceutical Engineering, School of Biomedical and  
Pharmaceutical Sciences, Guangdong University of Technology, Guangzhou 510006,  
People's Republic of China

<sup>b</sup> Department of Laboratory Medicine, Third Affiliated Hospital of Sun Yat-sen  
University, Guangzhou, 510630, China.

\*Corresponding Author:

Prof. Suqing Zhao

Tel.: +86 15820258676

E-mail address: sqzhao@gdut.edu.cn (S.-Q. Zhao)

Dr. Xiping Cui

Tel.: +86 18813758818

E-mail address: cuixiping1989@163.com (X.-P. Cui)

†Both authors have contributed equally.

E-mail addresses for other authors:

jiangshilin\_22@163.com (S.-L. Jiang); chenylq53@mail.sysu.edu.cn (Y.-Q. Chen);

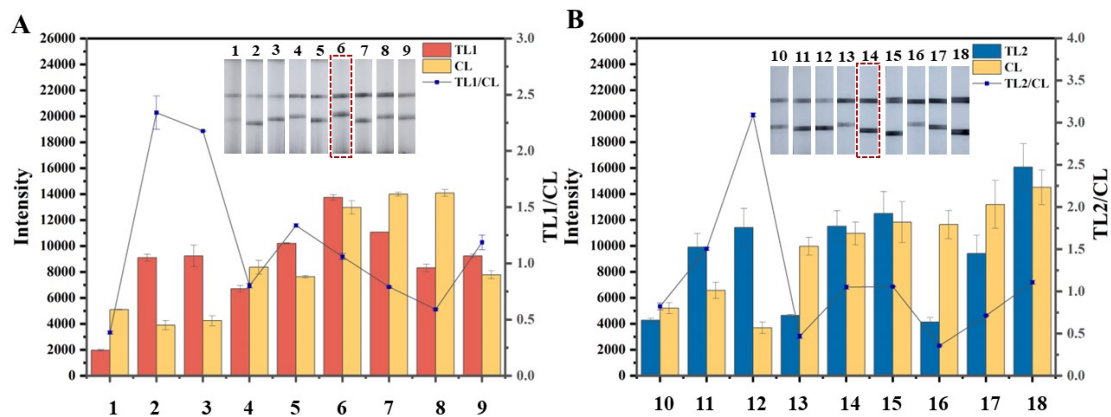
liangjinhui2020@163.com (H.-J. Liang); hxq323723@163.com (H.-X. Xiao);

lmxmingxia@163.com (M.-X. Lin).

## Figure and table captions

**Table. S1** Optimization results of experimental parameters of the AgPd NPs-based LFIA: concentration specific value of CL, TL1 and TL2.

| Number | CL        | TL1     | TL2       |
|--------|-----------|---------|-----------|
| 1      | 0.5 mg/mL | 1 mg/mL | -         |
| 2      | 0.5 mg/mL | 2 mg/mL | -         |
| 3      | 0.5 mg/mL | 4 mg/mL | -         |
| 4      | 1 mg/mL   | 1 mg/mL | -         |
| 5      | 1 mg/mL   | 2 mg/mL | -         |
| 6      | 1 mg/mL   | 4 mg/mL | -         |
| 7      | 2 mg/mL   | 1 mg/mL | -         |
| 8      | 2 mg/mL   | 2 mg/mL | -         |
| 9      | 2 mg/mL   | 4 mg/mL | -         |
| 10     | 0.5 mg/mL | -       | 0.4 mg/mL |
| 11     | 0.5 mg/mL | -       | 0.6 mg/mL |
| 12     | 0.5 mg/mL | -       | 0.8 mg/mL |
| 13     | 1 mg/mL   | -       | 0.4 mg/mL |
| 14     | 1 mg/mL   | -       | 0.6 mg/mL |
| 15     | 1 mg/mL   | -       | 0.8 mg/mL |
| 16     | 2 mg/mL   | -       | 0.4 mg/mL |
| 17     | 2 mg/mL   | -       | 0.6 mg/mL |
| 18     | 2 mg/mL   | -       | 0.8 mg/mL |



**Fig. S1** Optimization results of experimental parameters of the AgPd NPs-based LFIA: A. concentration optimization results of CL and TL1; B. concentration optimization results of CL and TL2.

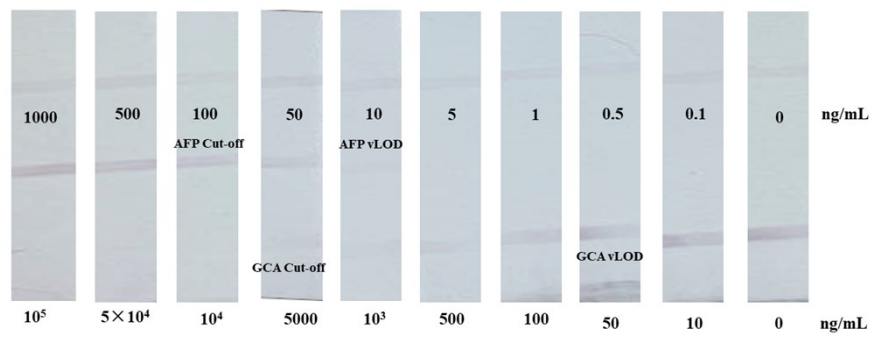


Fig. S2 Sensitivity detection of the AuNPs LFIA.