

*Supplementary Information*

**Modification of antigenicity of cancer cells by conjugate consisting of  
hyaluronic acid and foreign antigen**

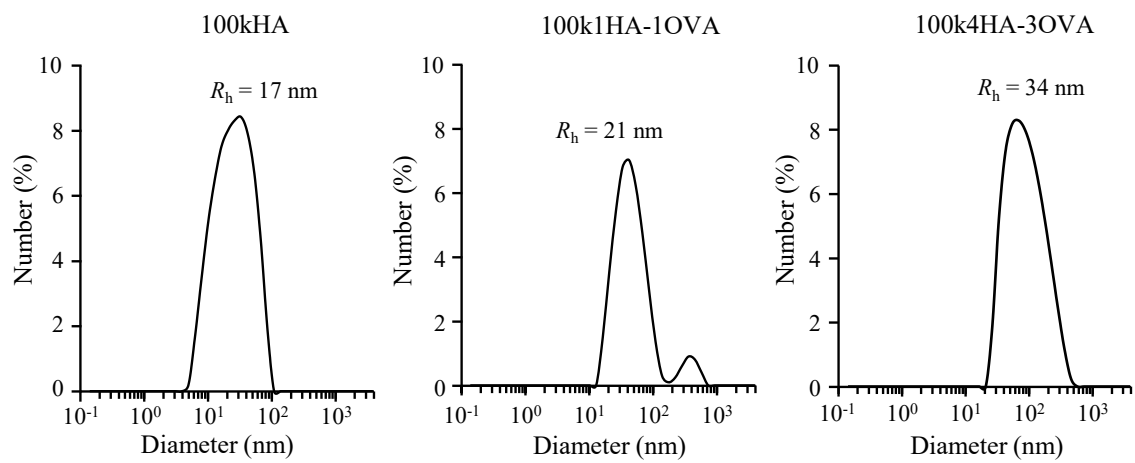
Soichi Ogata, Reika Tsuji, Atsushi Moritaka, Shoya Ito, Shinichi Mochizuki\*

Department of Chemistry and Biochemistry, The University of Kitakyushu, 1-1 Hibikino,  
Wakamatsu-ku, Kitakyushu, Fukuoka 808-0135, Japan.

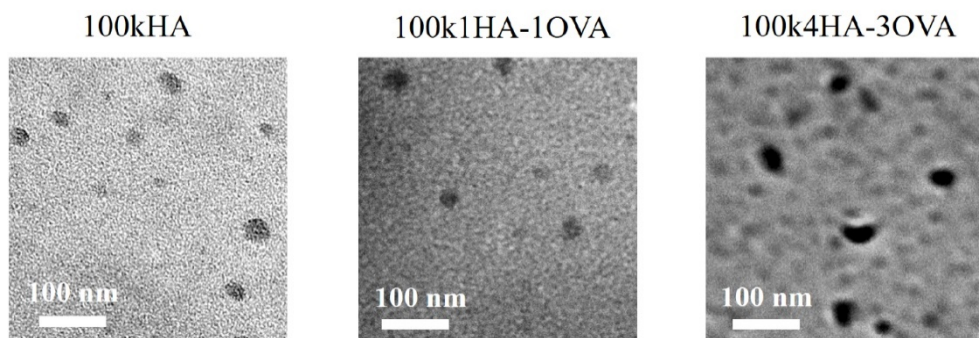
\*Corresponding author. Department of Chemistry and Biochemistry, The University of  
Kitakyushu, 1-1 Hibikino, Wakamatsu-ku, Kitakyushu, Fukuoka 808-0135, Japan.

Tel: +81-93-695-3203; Fax: +81-93-695-3572

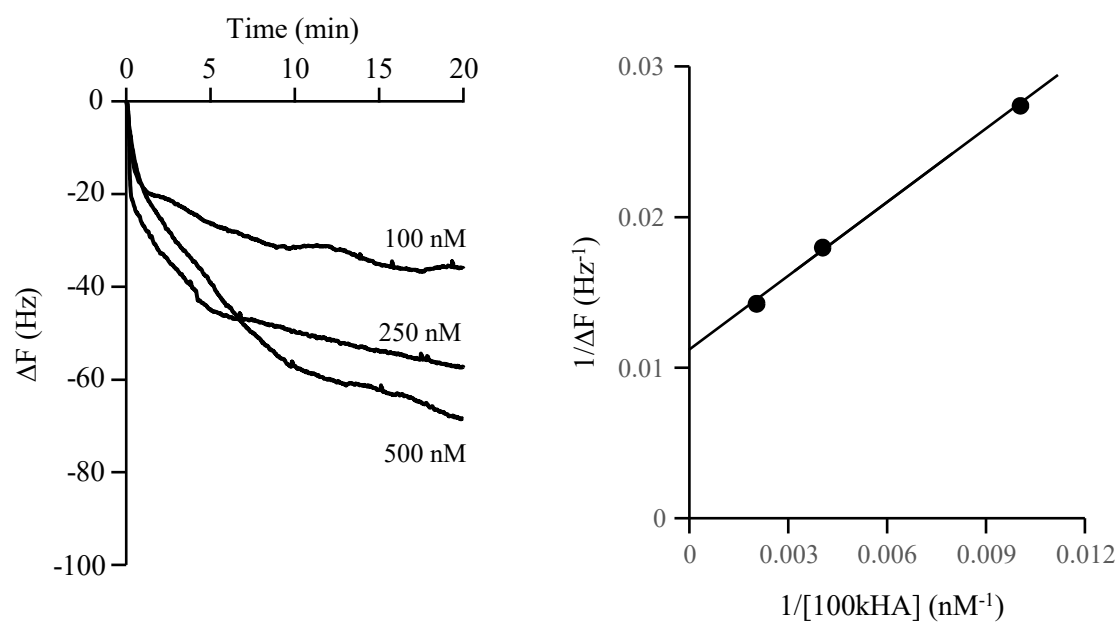
E-mail address: [mochizuki@kitakyu-u.ac.jp](mailto:mochizuki@kitakyu-u.ac.jp)



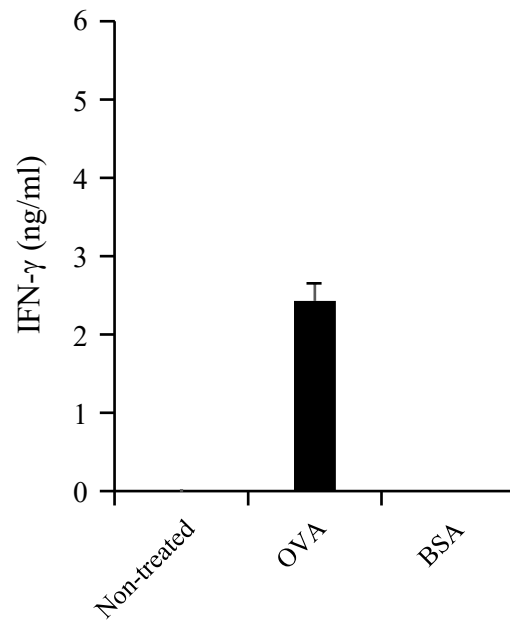
**Fig. S1** Size distribution of 100kHA, 100k1HA-1OVA, and 100k4HA-3OVA determined by DLS.



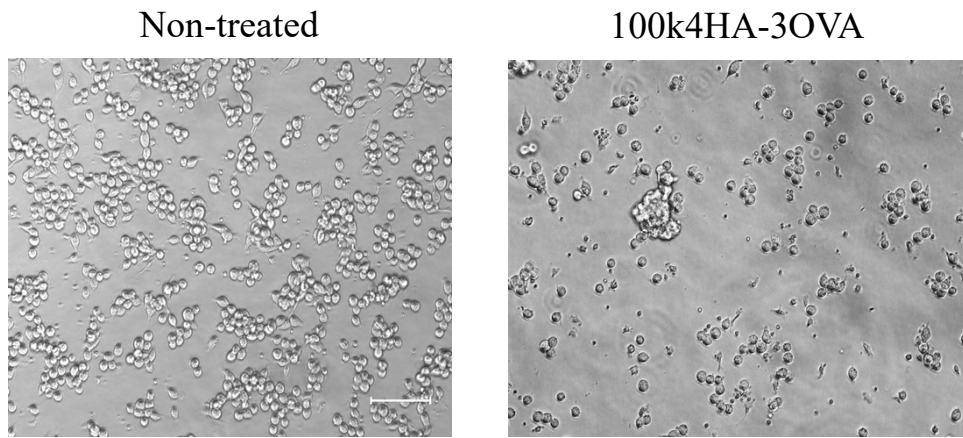
**Fig. S2** TEM images of 100kHA, 100k1HA-1OVA, and 100k4HA-3OVA.



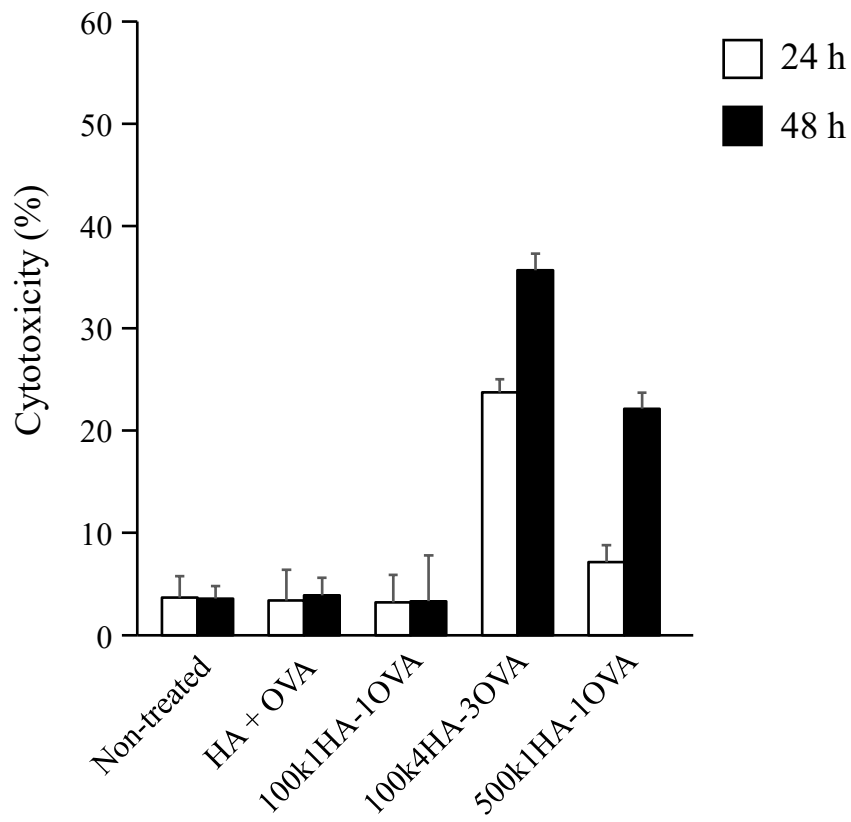
**Fig. S3** Time courses of frequency decrease in rCD44-immobilized QCM in response to the addition of 100kHA at the indicated concentrations (left), and the associated linear reciprocal plots of  $1/\Delta F$  against  $1/[100kHA]$  (right).



**Fig. S4** Induction of OVA-specific CTLs. Splenocytes obtained after immunization with OVA and CpG-DNA were stimulated with OVA or BSA at 10  $\mu\text{g/ml}$  for 24 h. IFN- $\gamma$  in the supernatant was determined with a Murine IFN- $\gamma$  ELISA Development Kit. Results are represented as the mean  $\pm$  S.D. ( $n = 3$ ).



**Fig. S5** Microscopic observation of CT 26 cells treated with (right panel) or without (left panel) 100k4HA-3OVA conjugate after 48 h of incubation with splenocytes including OVA-specific CTLs at an E/T ratio of 50:1. Before observation, the splenocytes and dead cells were washed out. The bar represents 100  $\mu\text{m}$ .



**Fig. S6** Cytotoxic effects of OVA-specific CTLs on CT26 cells treated with the indicated HA-OVA conjugates at an E/T ratio of 50:1. At 24 (white bar) and 48 h (black bar), the amount of LDH in the supernatants was determined. Results are represented as the mean  $\pm$  S.D. ( $n = 3$ ).