

Supporting Information

for

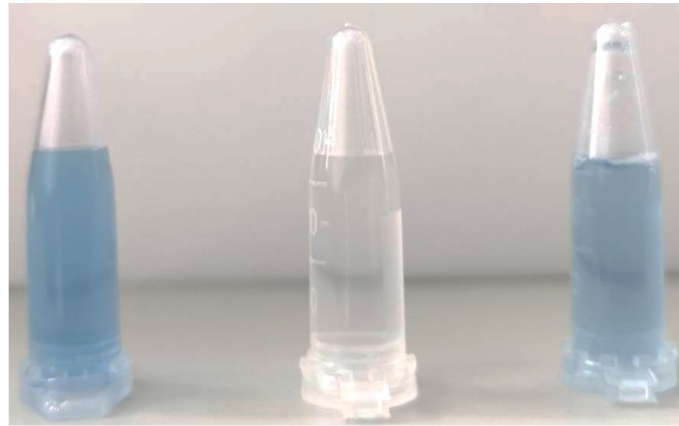
Photothermal-responsive Prussian blue nanocage loaded with thrombin for tumor starvation therapy and photothermal therapy

Yang Liu^a, Bingjie Yue^a, Ranran Wang^b, Hailin Cong^{a,c,d}, Hao Hu^{a*}, Bing Yu^{a,d*},
Youqing Shen^{a,e}

- a. College of Chemistry and Chemical Engineering, College of Materials Science and Engineering, Institute of Biomedical Materials and Engineering, Qingdao University, Qingdao, 266071, China
- b. Institute of Rehabilitation Medicine, School of Rehabilitation Medicine, Binzhou Medical University, Yantai, 264003, PR China
- c. School of Materials Science and Engineering, Shandong University of Technology, Zibo 255000, China
- d. State Key Laboratory of Bio-Fibers and Eco-Textiles, Qingdao University, Qingdao 266071, China
- e. Key Laboratory of Biomass Chemical Engineering of Ministry of Education, Center for Bionanoengineering, and Department of Chemical and Biological Engineering, Zhejiang University, Hangzhou, Zhejiang, 310027, China

*Corresponding authors at: College of Chemistry and Chemical Engineering, College of Materials Science and Engineering, Institute of Biomedical Materials and Engineering, Qingdao University, Qingdao, 266071, China

E-mail addresses: huhao@qdu.edu.cn (Hao Hu), yubingqdu@yahoo.com (Bing Yu),



PB Cage H₂O (Thr/PCM)@PB Cage

Figure S1. Dispersion display of PB Cage and (Thr/PCM)@PB Cage in water.

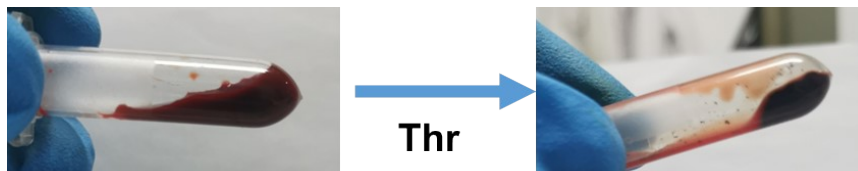


Figure S2. *In vitro* coagulation test with Thr.

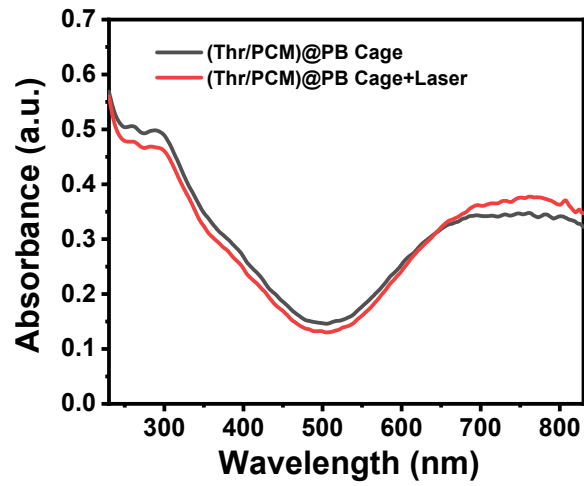


Figure S3. The UV absorption spectra of (Thr/PCM)@PB Cage solution before and after NIR irradiation.

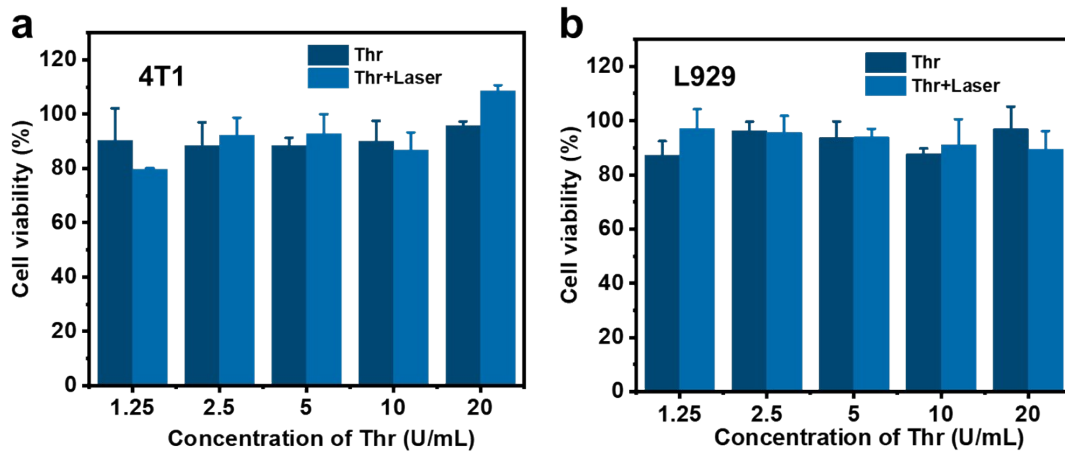


Figure S4. Thr biocompatibility test in (a) 4T1 cells and (b) L929 cells.

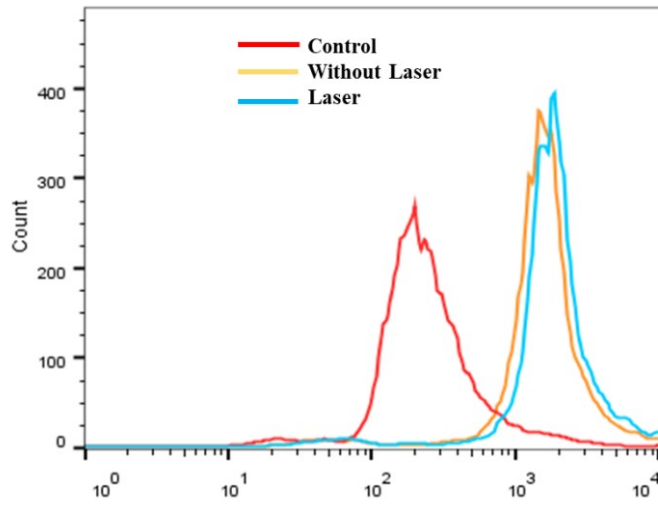


Figure S5. Flow cytometry of 4T1 cells cultured with nanoparticles coated with Nile red.

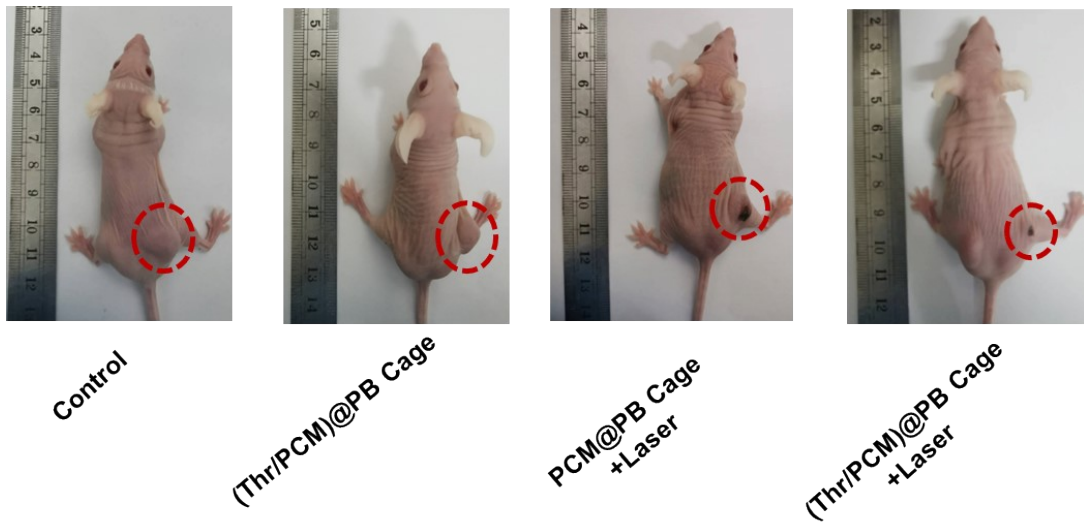


Figure S6. Images of mice treated in different ways after 14 days.