

Electronic Supplementary Information

**MMAE-Loaded PDL1 Active Targeting Nanomedicine for the Precision  
Treatment of Colon Cancer**

Zhenqian Zhang,<sup>a</sup> Honglei Zhang,<sup>a</sup> Linjie Cui,<sup>b, c</sup> Xiaoshuang Wang,<sup>d</sup> Di Wang,<sup>d</sup> Zhilin Liu,<sup>\* b</sup> Xuefei Zhang,<sup>\* a</sup> Zhaohui Tang<sup>\* b, c</sup>

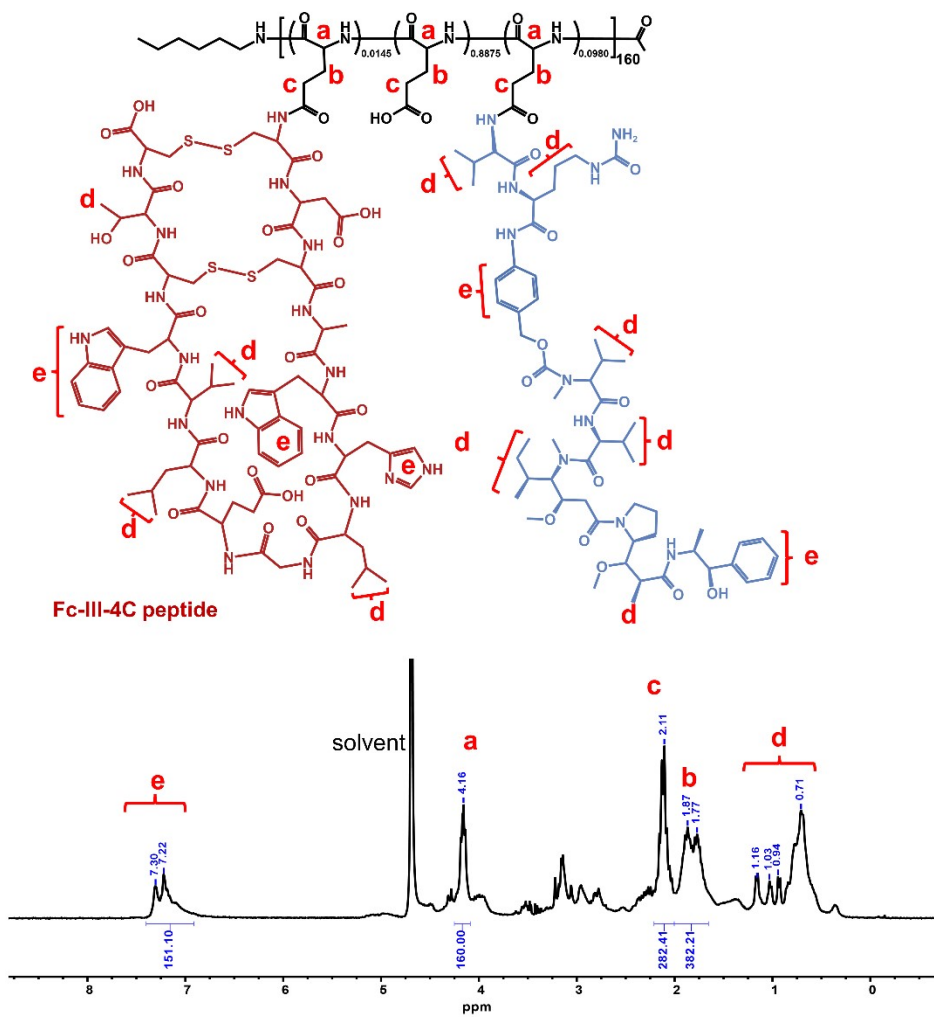
\* Corresponding authors

<sup>a</sup> Key Laboratory of Environmentally Friendly Chemistry and Applications of Ministry of Education and Key Laboratory of Polymeric Materials & Application Technology of Hunan Province, Xiangtan University, Xiangtan 411105, PR China; E-mail: zxf7515@xtu.edu.cn

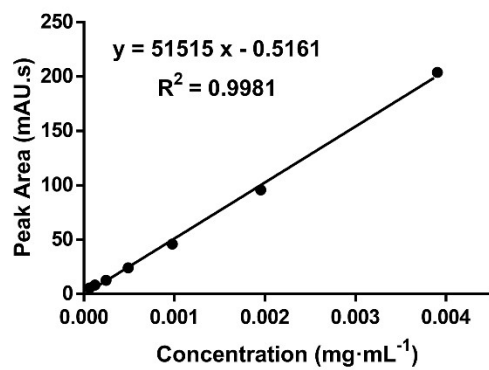
<sup>b</sup> Key Laboratory of Polymer Ecomaterials, Changchun Institute of Applied Chemistry, Chinese Academy of Sciences, Changchun 130022, China; E-mail: ztang@ciac.ac.cn; zliu@ciac.ac.cn

<sup>c</sup> School of Applied Chemistry and Engineering, University of Science and Technology of China, Hefei 230026, China

<sup>d</sup> No. 1 Department of Neurology, China-Japan Union Hospital of Jilin University, 126 Xiantai Road, Changchun 130033, China



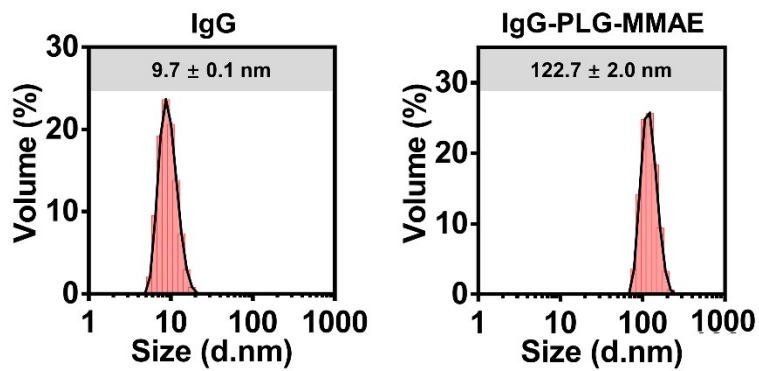
**Figure S1.** The <sup>1</sup>H NMR spectrum of Fc-PLG-MMAE.



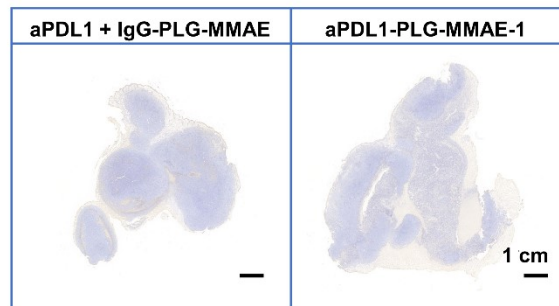
**Figure S2.** HPLC standard curve of MMAE.

**Table S1.** Sulfur element content in Fc-PLG-MMAE.

	Sample Name	Sulfur element [%]	Average [%]	Std Dev
1	Fc-PLG-MMAE (1)	0.653	0.699	0.040
2	Fc-PLG-MMAE (2)	0.722		
3	Fc-PLG-MMAE (3)	0.722		



**Figure S3.** Sizes of IgG and IgG-PLG-MMAE.



**Figure S4.** The entire tumor TUNEL-stained sections of aPDL1 + IgG-PLG-MMAE and aPDL1-PLG-MMAE-1.