

## Electronic Supplementary Information for

### Fe-organic framework/arginine-glycine-aspartate peptide modified sensor toward electrochemically detecting nitric oxide released from living cells

Tingting Zhao,<sup>‡a</sup> Ting Shu,<sup>‡a</sup> Jinrong Lang,<sup>a</sup> Ziyu Cui,<sup>a</sup> Ping Li,<sup>a</sup> and Shi Wang<sup>\*a,b</sup>

<sup>a</sup>School of Pharmacy, Xianning Medical College, Hubei University of Science and Technology, Xianning 437100, P. R. China.

<sup>b</sup>Hubei Engineering Research Center of Traditional Chinese Medicine of South Hubei Province, Xianning 437100, P. R. China

<sup>‡</sup> These authors contributed equally to this work.



Fig. S1 Image of the SPE, PDMS chamber (including plastic interlayer), and magnetic rotor.

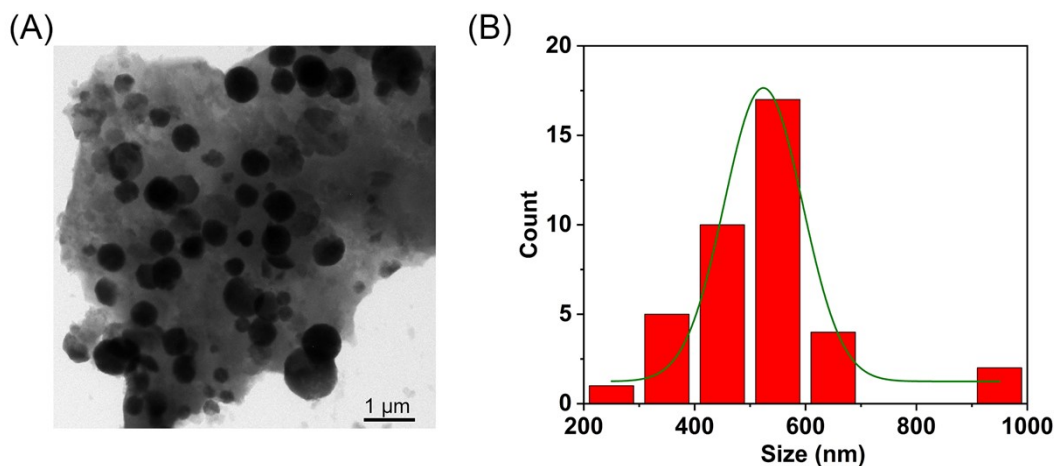


Fig.S2 (A) TEM image of Fe-BTC. (B) The size distribution histogram of Fe-BTC.

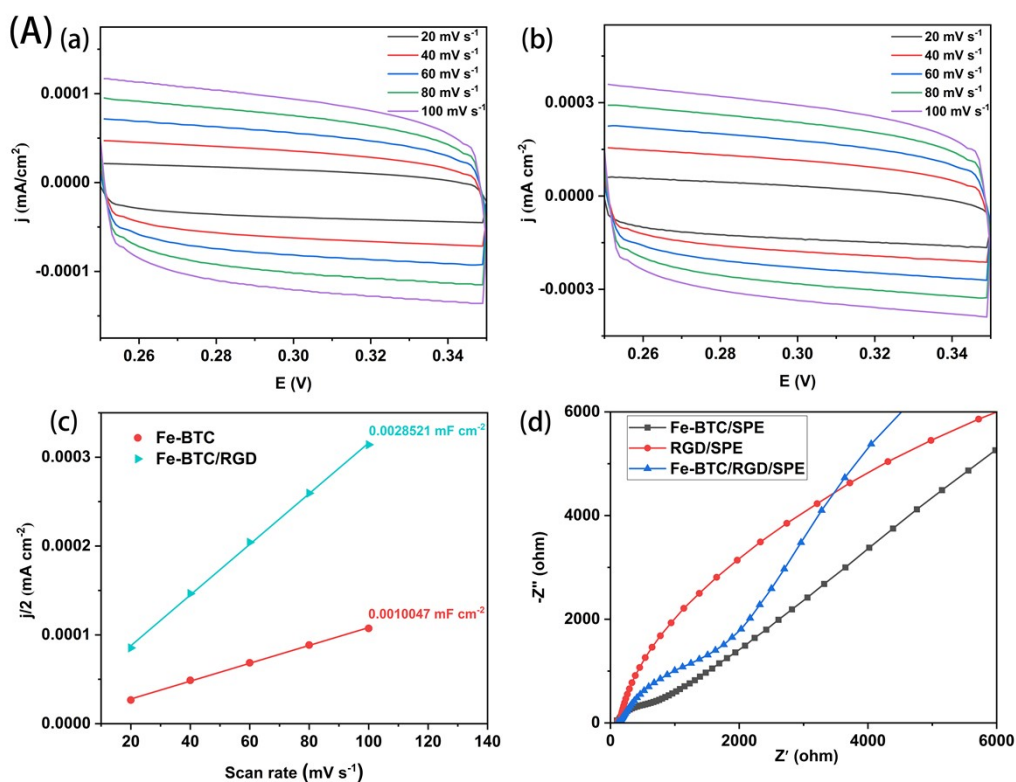


Fig.S3 (A) The CV curves at different scan rates within 0.25–0.35 V of Fe-BTC/SPE modified with 0.1 mg mL<sup>-1</sup> Fe-BTC (a), Fe-BTC/RGD/SPE modified with 0.1 mg mL<sup>-1</sup> Fe-BTC and 0.025 mg mL<sup>-1</sup> RGD (b), and the corresponding Cdl values (c). (B) The EIS spectrum of Fe-BTC/SPE, RGD/SPE, and Fe-BTC/RGD/SPE.

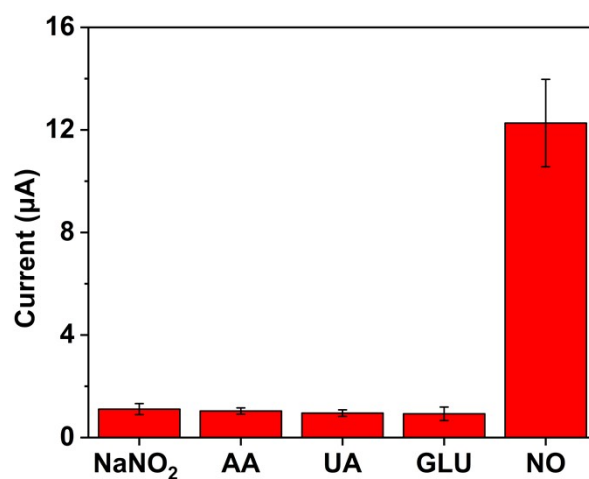


Fig.S4 Interference testing of Fe-BTC/RGD/SPE. Results are presented as the mean  $\pm$  SD (error bar) of triplicate experiments.

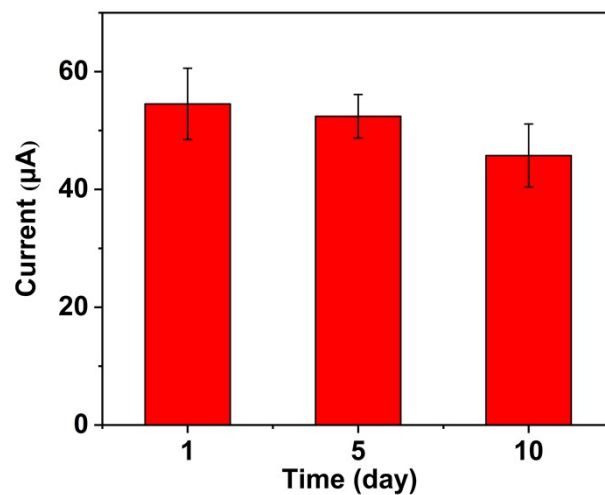


Fig.S5 Stability study of Fe-BTC/RGD/SPE toward NO. Results are presented as the mean  $\pm$  SD (error bar) of triplicate experiments.