

Metallic CoNi nanoparticles anchored on heteroatoms-doped Carbon/MnO nanowires for improved catalytic performance

Songbo Xie^a, Xiaoying He^a, Jingli Xu^a, Xue-Bo Yin^a, Min Zhang^{*a}

^a College of Chemistry and Chemical Engineering, Shanghai University of Engineering Science, Shanghai 201620, China.

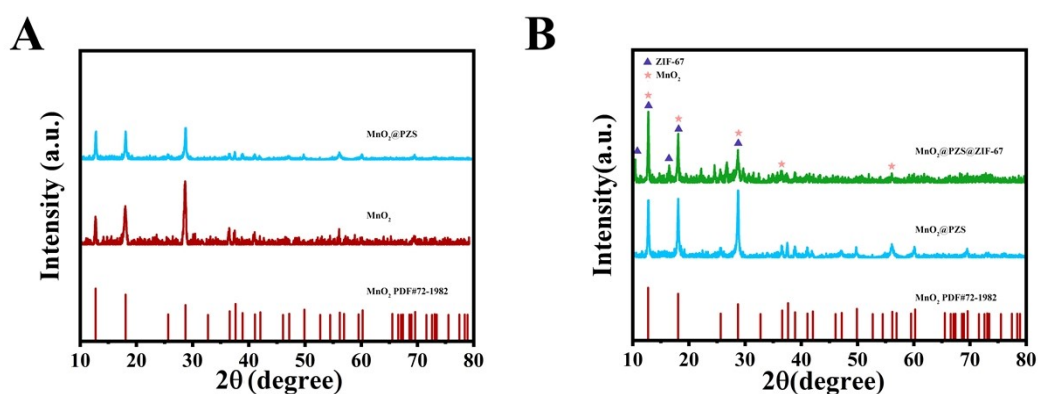


Fig. S1 (A) XRD patterns of MnO₂ and MnO₂@PZS, (B) XRD patterns of MnO₂@PZS and MnO₂@PZS@ZIF-67.

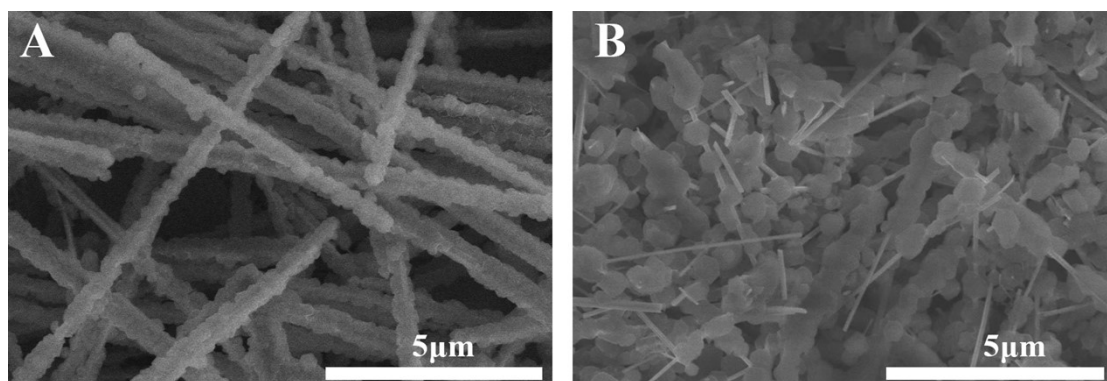


Fig. S2 SEM images of MnO₂@PZS@ZIF-67 (A) and MnO₂@ZIF-67 (B).