

Forming SnS@C/MoS₂ Nanotubes with High Specific Surface Area via Self Sacrificing Template Method as Superior Performance Anode for Lithium-Ion Batteries

Songwei Ye¹, Zunxian Yang^{*,1,2}, Yuliang Ye¹, Zhiming Cheng¹, Hongyi Hong¹, Zhiwei Zeng¹, Zongyi Meng¹, Qianting Lan¹, Hui Zhang¹, Ye Chen¹, Jiaxiang Wang¹, Yuting Bai¹, Xudong Jiang¹, Benfang Liu¹, Jiajie Hong¹, Tailiang Guo^{1,2}, Shen Xu^{1,2}, Zhenzhen Weng³, Yongyi Chen³

¹National & Local United Engineering Research Center of Flat Panel Display Technology, Fuzhou University, Fuzhou 350108, P. R. China.

²Mindu Innovation Laboratory, Fujian Science & Technology Innovation Laboratory For Optoelectronic Information of China, Fuzhou, 350108, P.R. China

³Department of Physics, School of Physics and Information Engineering, Fuzhou University

Supporting Information

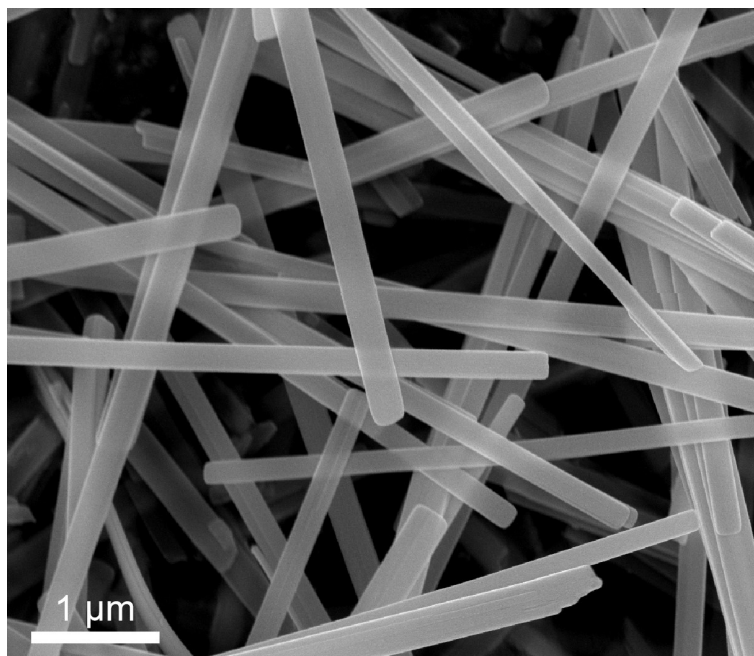


Figure S1 SEM images of MoO₃ nanobelts

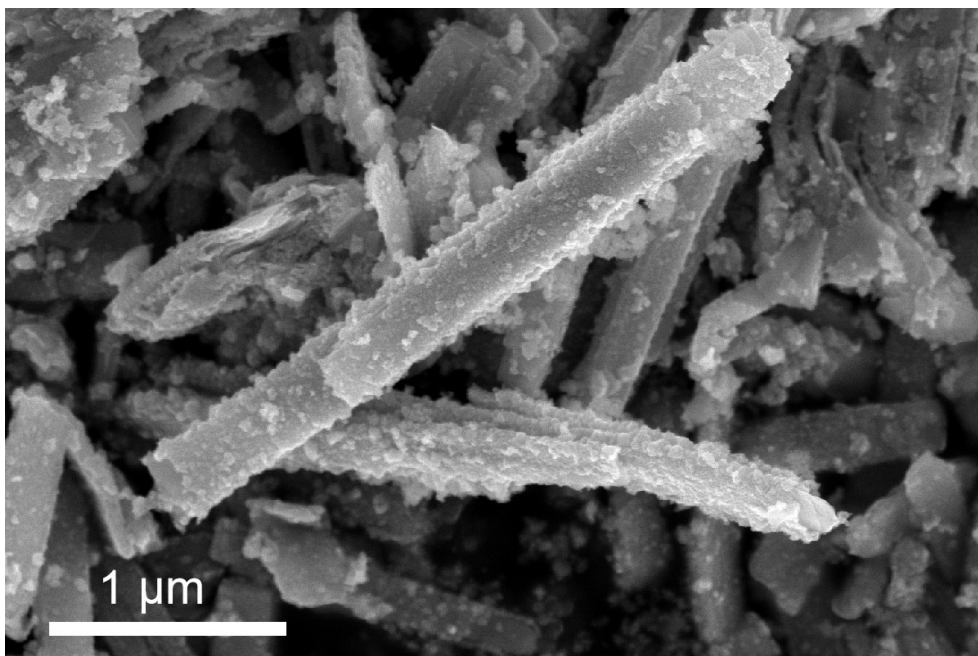


Figure S2 SEM images of Sn-MOF/MoO₃ nanorod without PVP

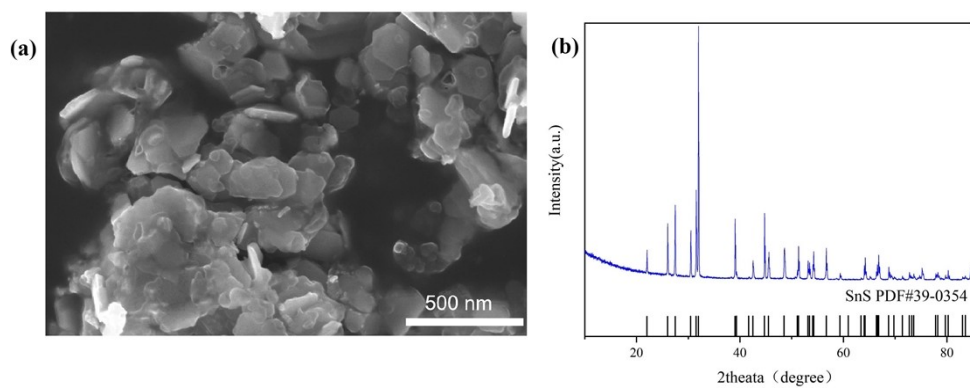


Figure S3 (a) SEM image and (b) XRD pattern of C/SnS nanosheets.

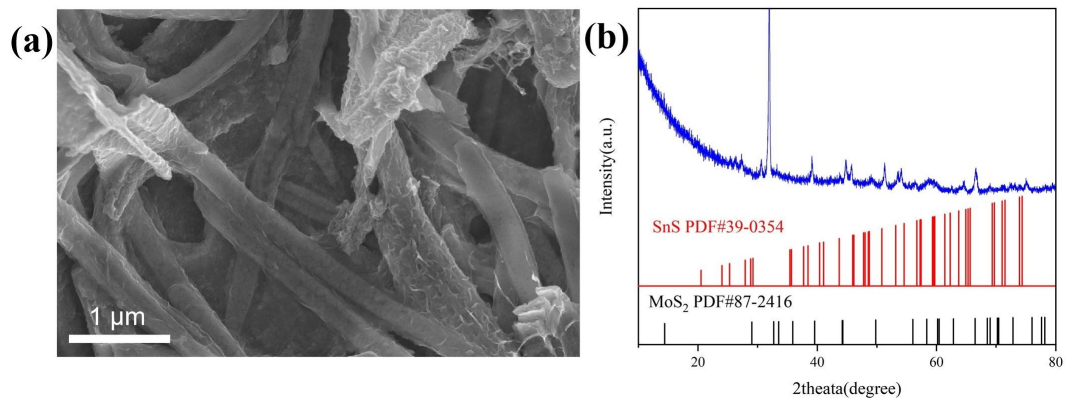


Figure S4 (a) SEM image and **(b)** XRD pattern of SnS/MoS₂ nanotubes.

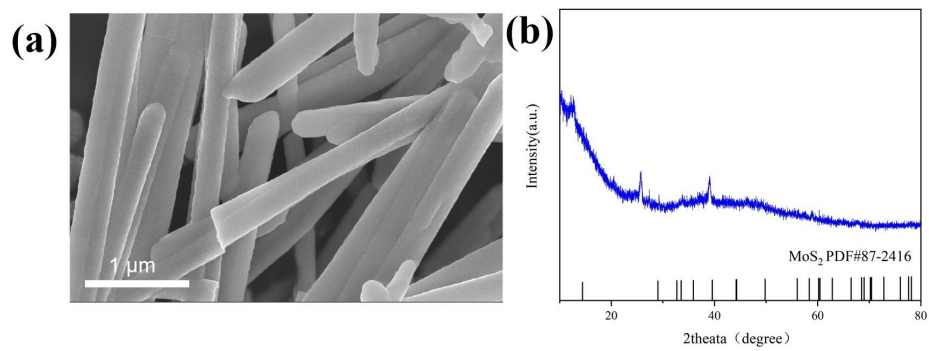


Figure S5 (a) SEM image and **(b)** XRD pattern of MoS₂ nanorods.