

Supporting Information

7-Membered-ring effect on fluorescence quantum yield: Does metal-complexation-induced twisting-inhibition of an amino GFP chromophore derivative enhance fluorescence?

*Hao-Wei Ke and Kuangsen Sung**

Department of Chemistry, National Cheng Kung University, Tainan, Taiwan

<u>Content</u>	<u>Page</u>
1. ^1H - and ^{13}C -NMR spectra of <i>o</i> -PABDI	S2
2. Electronic absorption and fluorescence emission spectra for the titration of (<i>Z</i>)- <i>o</i> -PABDI with various concentrations of Na_2SO_4 , $\text{Mg}(\text{NO}_3)_2$, KClO_4 , CaCl_2 , $\text{Mn}(\text{ClO}_4)_2$, FeCl_3 , $\text{Co}(\text{ClO}_4)_2$, $\text{Ni}(\text{ClO}_4)_2$, and $\text{Cu}(\text{ClO}_4)_2$ in CH_3CN	S3-S7

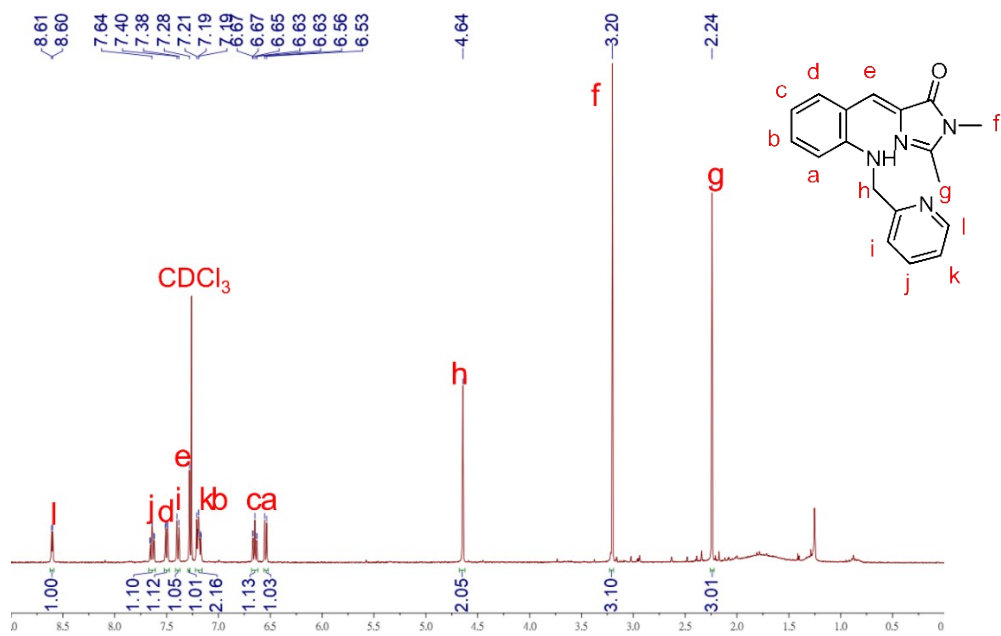


Figure S1. ^1H -NMR spectrum of *o*-PABDI in CDCl_3

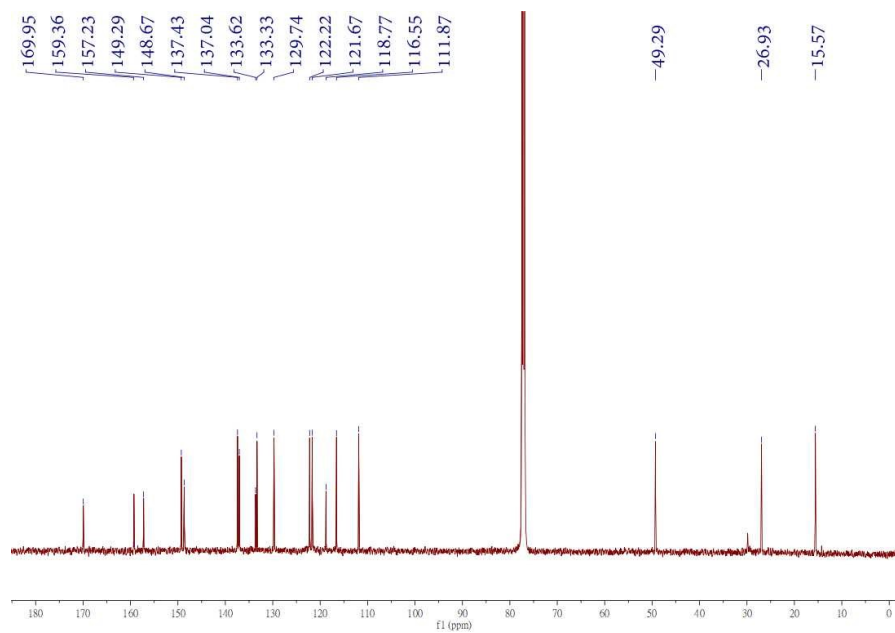


Figure S2. ^{13}C -NMR spectrum of *o*-PABDI in CDCl_3

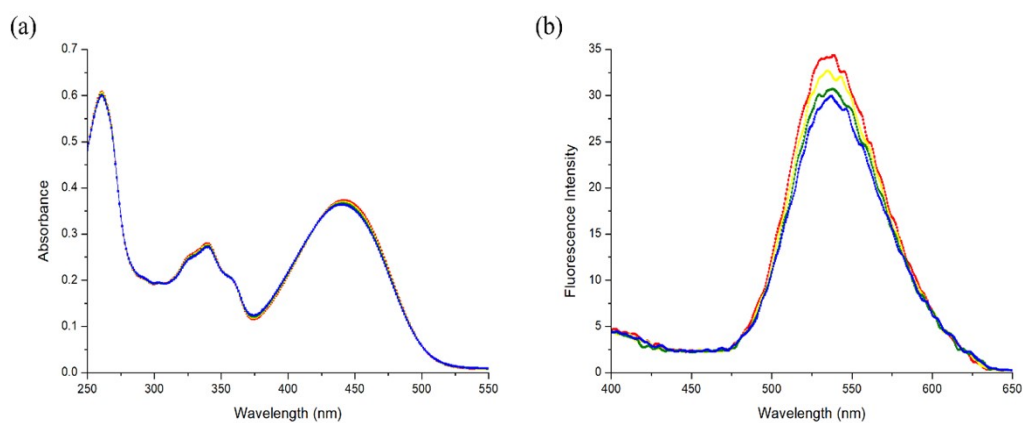


Figure S3. Electronic absorption (left) and fluorescence emission (right) spectra for the titration of (*Z*)-*o*-PABDI with various concentrations of Na₂SO₄ in CH₃CN

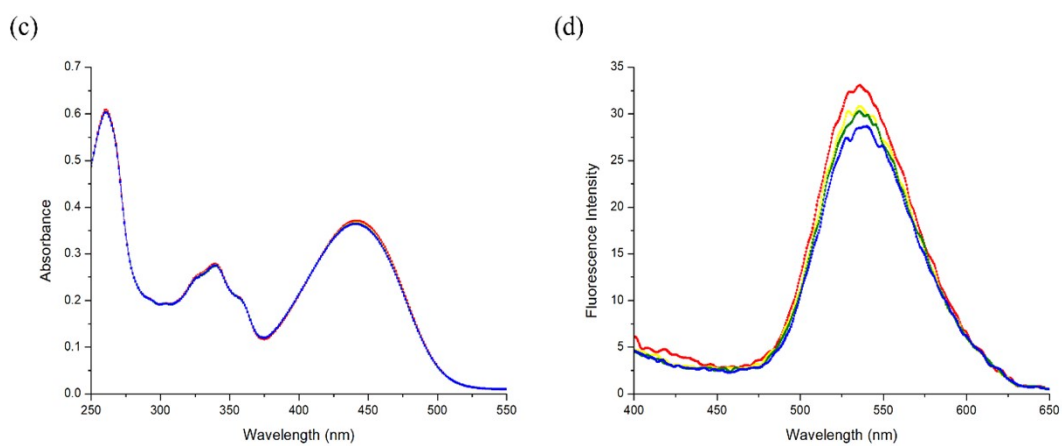


Figure S4. Electronic absorption (left) and fluorescence emission (right) spectra for the titration of (*Z*)-*o*-PABDI with various concentrations of Mg(NO₃)₂ in CH₃CN

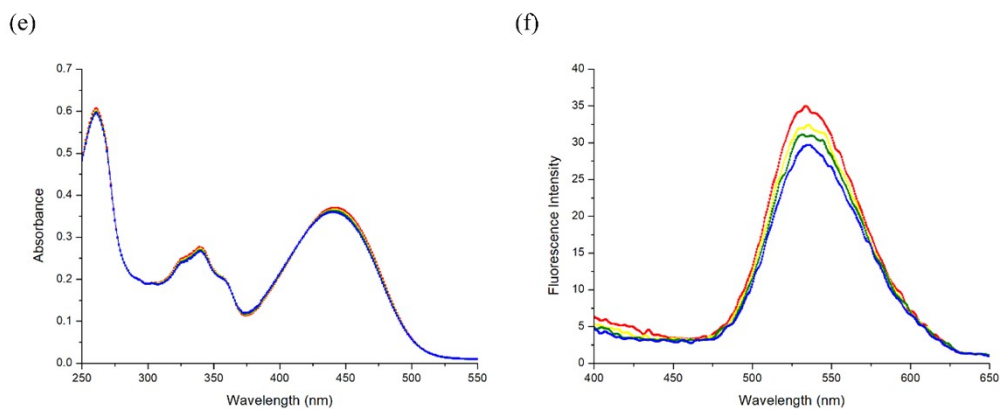


Figure S5. Electronic absorption (left) and fluorescence emission (right) spectra for the titration of (*Z*)-*o*-PABDI with various concentrations of KClO_4 in CH_3CN

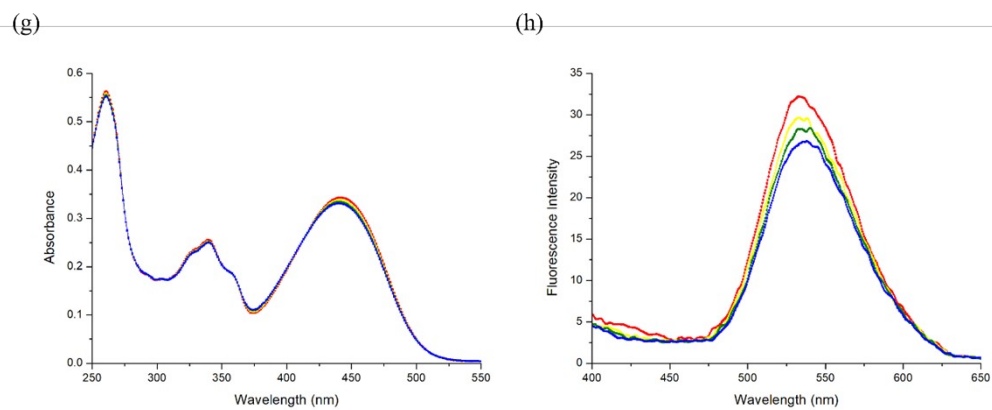


Figure S6. Electronic absorption (left) and fluorescence emission (right) spectra for the titration of (*Z*)-*o*-PABDI with various concentrations of CaCl_2 in CH_3CN

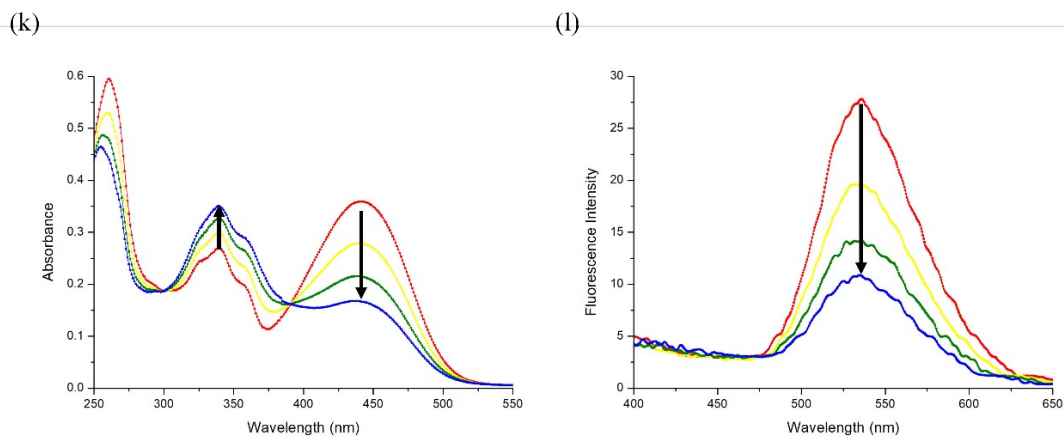


Figure S7. Electronic absorption (left) and fluorescence emission (right) spectra for the titration of (*Z*)-*o*-PABDI with various concentrations of Mn(ClO₄)₂ in CH₃CN

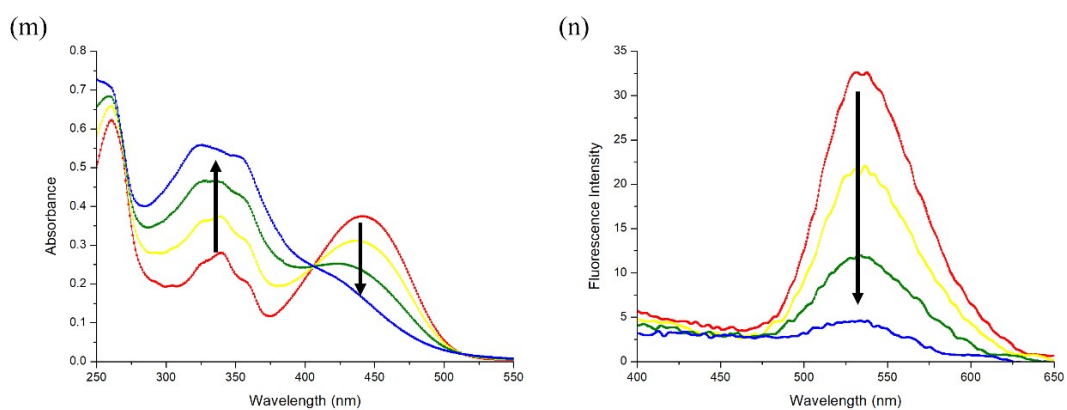


Figure S8. Electronic absorption (left) and fluorescence emission (right) spectra for the titration of (*Z*)-*o*-PABDI with various concentrations of FeCl₃ in CH₃CN

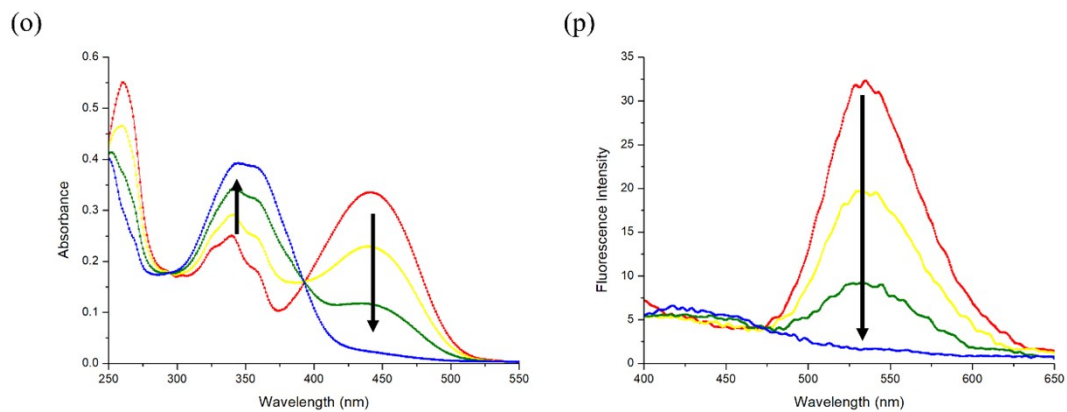


Figure S9. Electronic absorption (left) and fluorescence emission (right) spectra for the titration of (*Z*)-*o*-PABDI with various concentrations of Co(ClO₄)₂ in CH₃CN

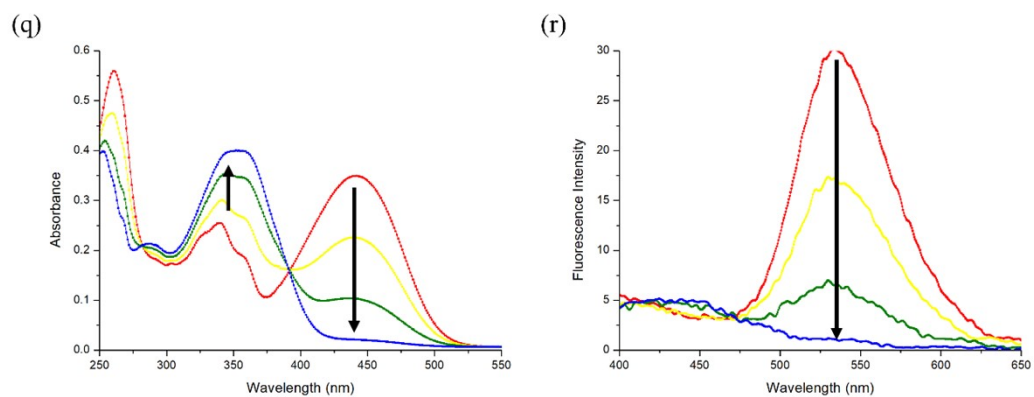


Figure S10. Electronic absorption (left) and fluorescence emission (right) spectra for the titration of (*Z*)-*o*-PABDI with various concentrations of Ni(ClO₄)₂ in CH₃CN

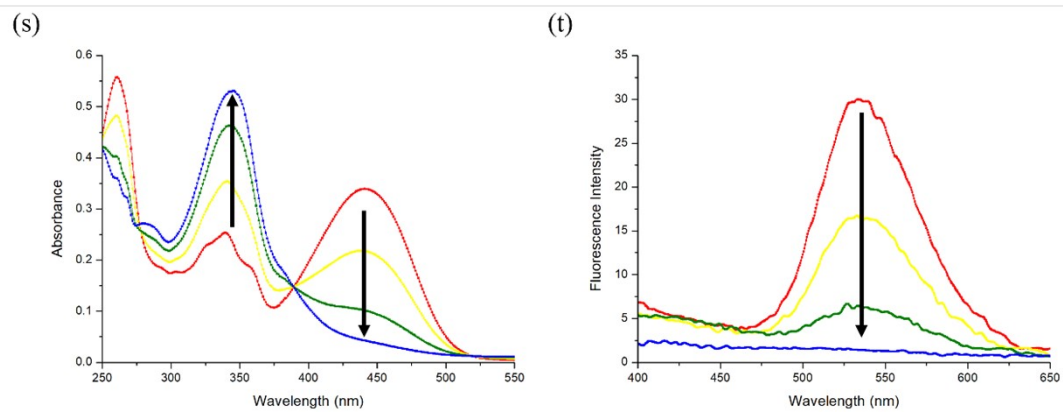


Figure S11. Electronic absorption (left) and fluorescence emission (right) spectra for the titration of (*Z*)-*o*-PABDI with various concentrations of Cu(ClO₄)₂ in CH₃CN