

Supplementary Material for
**Growth Mechanism Prediction for Nanoparticles via Structure
Matching Polymerization**

Yi-Rong Liu,^{*a} Yan Jiang^b

^aPublic Experimental Teaching Center, Panzhihua University, Panzhihua, Sichuan 61700, China

^bSchool of Vanadium and Titanium, Panzhihua University, Panzhihua, Sichuan 61700, China

*Corresponding authors

E-mail: liuyirong@pzhu.edu.cn

This Supplementary Material (SM) contains additional information on the new computational methods. The cartesian coordinates of new ground state structures for SA-DMA systems and the structure matching combination (B_m+B_k) before optimization for B_n ($n=2-36$) systems were provided at the SM. The flow chart of revised BH and GA based on SMP method were also provided at here.

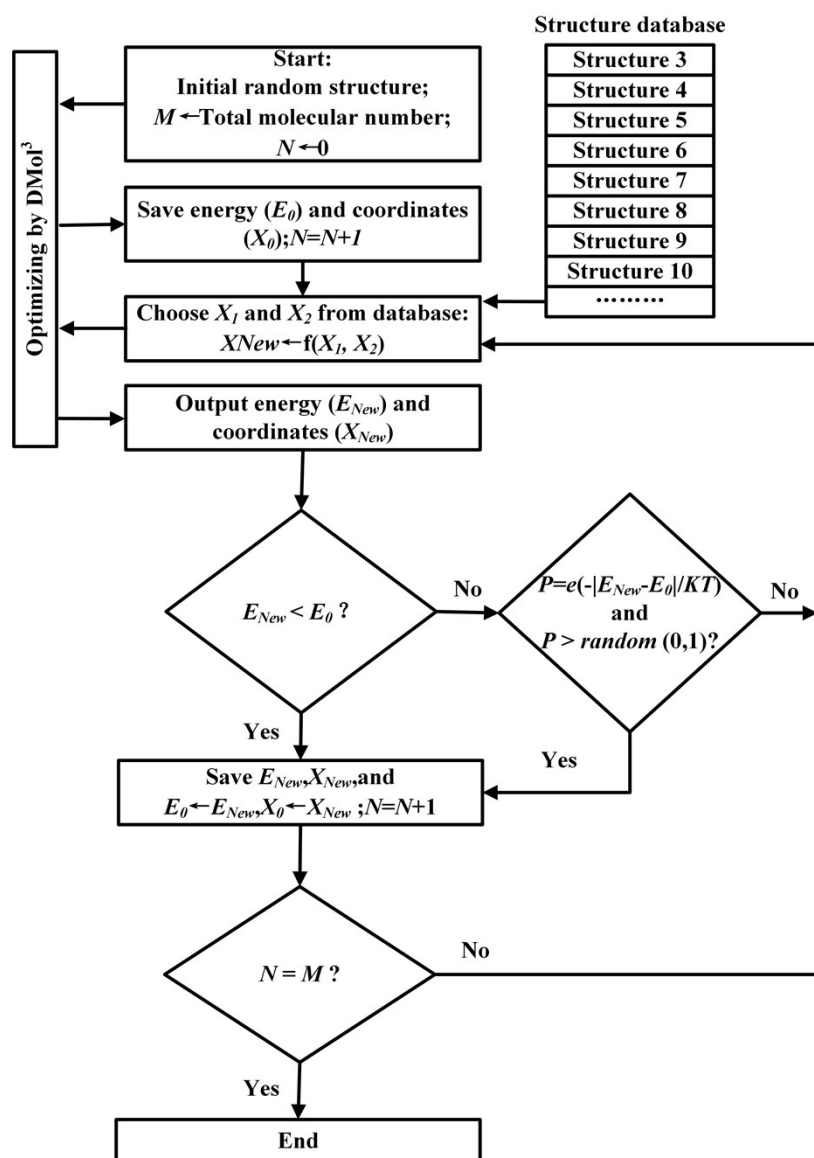


Fig. S1. The flow chart of revised BH based on SMP method. The atomic or molecule movement was replaced by two-body matching polymerization from the structure database.

Note that all matching structures were randomly selected from database.

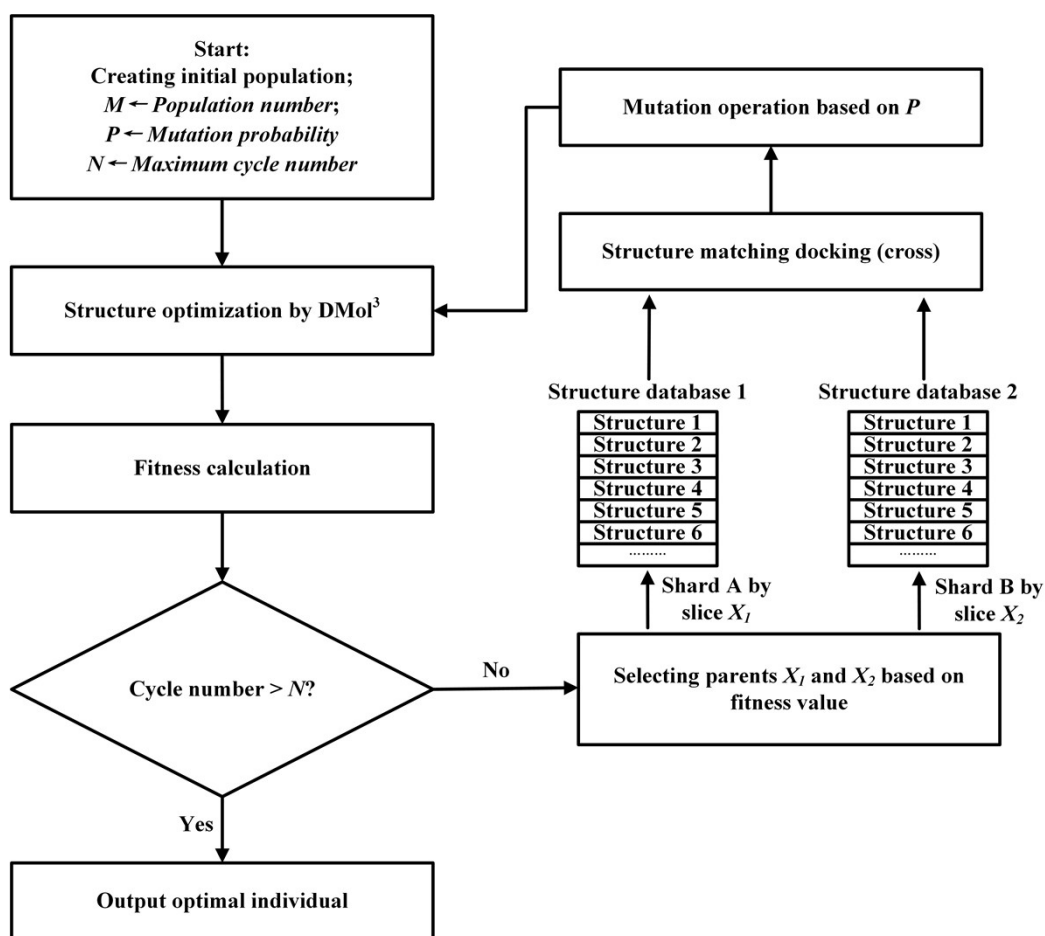


Fig. S2. The flow chart of revised GA based on SMP method. The key cross operation was replaced by SMP, and the fragmentary structure from cutting parent structure was replaced by structure database based on same atomic or molecular number. The two structures from database are connected (cross) based on SMP rules.

New ground state structures for SA-DMA systems

2SA.2DMA

S	1.311844	-1.750213	-0.533975
O	1.179412	-1.046971	0.779173
O	2.576625	-2.393360	-0.745511
O	0.101629	-2.556645	-0.777637
O	1.277045	-0.546960	-1.632662
H	-1.137313	-1.942420	0.099440
H	0.365440	-0.174590	-1.668408
C	-3.218497	-1.832304	0.091441
N	-1.904751	-1.597669	0.739380
C	-1.720550	-2.250593	2.059039
H	-3.220888	-1.301534	-0.858850
H	-4.015517	-1.451377	0.730032
H	-3.351716	-2.900534	-0.078318
H	-1.767563	-0.571570	0.841394
H	-0.709424	-2.030051	2.395811
H	-1.840640	-3.327760	1.945671
H	-2.454149	-1.864180	2.766969
S	-1.323787	1.697252	-0.399284
O	-0.167893	2.602311	-0.390794
O	-1.708125	1.193010	0.918666
O	-2.600310	2.614348	-0.815646
O	-1.225477	0.641388	-1.415858
H	-2.399888	3.020094	-1.670938
H	1.773189	0.448200	0.781010
C	2.145427	2.029665	2.093848
N	2.089819	1.461249	0.725202
C	3.362541	1.522243	-0.038659
H	1.151616	1.956666	2.533102
H	2.446525	3.076185	2.045245
H	2.859352	1.464038	2.692301
H	1.329079	1.943282	0.202113
H	3.189427	1.070094	-1.013256
H	4.126547	0.955658	0.493156
H	3.674767	2.561080	-0.148257

2SA.3DMA

C	-0.536177	3.600811	-0.307406
N	0.141914	2.480478	-0.998523
C	0.943412	2.872868	-2.182679
H	0.216020	4.282676	0.089986
H	-1.131664	3.186408	0.504262
H	-1.184035	4.134360	-1.005104

H	-0.567232	1.777432	-1.261219
H	1.700935	3.592596	-1.871648
H	0.298300	3.319315	-2.941582
H	1.433721	1.976350	-2.556534
S	2.297443	0.013589	0.061598
O	1.699166	-1.167931	0.805359
O	3.742438	0.022148	0.110286
O	1.766120	-0.059119	-1.360773
O	1.691093	1.263314	0.680094
H	0.865427	-1.248239	-1.541361
H	0.801209	1.967051	-0.292510
C	-0.460355	-2.049049	-2.978714
N	0.201583	-2.106757	-1.655218
C	0.985831	-3.338443	-1.399660
H	-1.049879	-1.134718	-3.022780
H	-1.115109	-2.912409	-3.107453
H	0.300650	-2.043872	-3.759488
H	-0.515606	-1.978743	-0.923993
H	1.457551	-3.228185	-0.425257
H	1.756814	-3.431149	-2.164937
H	0.331913	-4.211948	-1.425883
S	-2.354571	-0.014355	-0.049304
O	-2.042233	0.865475	1.085088
O	-1.907794	-1.393285	0.127349
O	-3.977956	-0.182199	-0.068178
O	-1.993552	0.583145	-1.342330
H	-4.359923	0.695537	-0.205645
H	0.730677	-0.714555	1.868439
C	-0.638592	-1.553488	3.240597
N	0.039887	-0.379902	2.642889
C	0.797504	0.457294	3.604310
H	-1.199643	-2.056242	2.455060
H	-1.320317	-1.229201	4.028496
H	0.112294	-2.225545	3.656666
H	-0.663656	0.191073	2.148258
H	1.292218	1.241861	3.035354
H	1.550569	-0.161852	4.092159
H	0.121125	0.875184	4.352118

3SA.2DMA

S	0.305583	2.815687	-0.607035
O	0.341053	4.037021	-1.337894
O	1.509161	2.255060	-0.035351
O	-0.769877	3.018531	0.537947

O	-0.370055	1.690790	-1.497424
H	-0.844065	2.192239	1.078442
H	0.173812	0.834569	-1.486350
S	-0.562618	-0.484960	2.233167
O	0.860469	-0.250424	2.436203
O	-1.299299	0.635758	1.619604
O	-0.881661	-1.761124	1.586377
O	-1.234524	-0.537498	3.707349
H	-0.020974	-2.456404	0.216063
H	-0.738633	-1.178014	4.236879
S	0.369747	-1.835052	-1.812634
O	1.112903	-2.479262	-2.851294
O	0.539022	-2.793910	-0.521470
O	0.956023	-0.520642	-1.363580
O	-1.076174	-1.673570	-2.027183
H	2.341140	-0.316601	-0.333761
H	-2.138585	-0.788976	-1.135086
C	-3.522050	0.754836	-1.385195
N	-2.875073	-0.302307	-0.561161
C	-3.804961	-1.334824	-0.029559
H	-2.749623	1.441865	-1.723196
H	-4.259498	1.283229	-0.781144
H	-4.006987	0.286514	-2.241072
H	-2.365276	0.126465	0.232327
H	-4.270324	-1.856508	-0.864897
H	-4.566684	-0.854291	0.584260
H	-3.225619	-2.031128	0.573037
C	3.420888	-1.714446	0.753063
N	2.957573	-0.319142	0.510736
C	4.061353	0.670251	0.372229
H	4.076745	-2.013207	-0.063859
H	2.553356	-2.368685	0.773393
H	3.958441	-1.753685	1.699811
H	2.309766	-0.048483	1.269073
H	4.681067	0.385145	-0.477456
H	4.660153	0.664388	1.283051
H	3.623180	1.650164	0.207988

3SA.3DMA

S	3.251574	-0.654750	0.449502
O	4.658055	-0.781369	0.685675
O	2.830598	-0.749579	-0.986233
O	2.568934	-1.922612	1.170826
O	2.614622	0.546906	1.047170

H	1.618464	-1.954673	0.900379
H	1.111132	0.551703	1.787154
S	-2.021300	1.948724	-0.006256
O	-0.614226	2.380583	-0.088382
O	-3.007388	2.982625	0.116447
O	-2.354308	1.199532	-1.397388
O	-2.144642	0.862929	1.031257
H	-1.614447	0.558956	-1.583024
H	-2.935575	-0.538670	0.508919
S	-0.273283	-1.792646	-1.070257
O	-0.320015	-0.452820	-1.693150
O	-1.449685	-2.603572	-1.377407
O	0.955716	-2.547170	-1.729307
O	-0.009484	-1.708828	0.383256
H	1.769065	-2.001437	-1.545085
H	0.749809	1.804303	-1.119814
C	1.312069	1.740986	-3.117746
N	1.629024	1.712897	-1.664593
C	2.568255	2.781346	-1.229601
H	0.650232	0.906700	-3.334115
H	2.238240	1.643947	-3.683673
H	0.824210	2.685130	-3.358699
H	2.029843	0.780834	-1.417568
H	2.104819	3.752811	-1.398315
H	3.490641	2.698493	-1.803875
H	2.781497	2.630784	-0.174528
C	-3.552459	-2.347144	1.329191
N	-3.423003	-1.412233	0.181918
C	-4.706295	-1.028392	-0.464549
H	-2.550886	-2.591358	1.678588
H	-4.055375	-3.256360	1.001015
H	-4.125477	-1.868758	2.123050
H	-2.783612	-1.856163	-0.514593
H	-4.484493	-0.318951	-1.259334
H	-5.351075	-0.554660	0.275134
H	-5.189137	-1.917937	-0.868430
C	0.258126	-0.423268	3.404156
N	0.285966	0.688387	2.420376
C	0.400112	2.039287	3.030098
H	0.138447	-1.356981	2.860476
H	-0.574411	-0.275953	4.092646
H	1.199281	-0.438582	3.952291
H	-0.573862	0.661564	1.832695
H	1.344589	2.108013	3.568605

H	-0.436533	2.200679	3.709619
H	0.364589	2.772081	2.227353

4SA.1DMA

S	0.302579	2.654666	-0.576085
O	0.920076	3.917169	-0.758219
O	0.949431	1.627781	0.242122
O	-1.131831	2.893923	0.035426
O	0.031722	2.051744	-2.002908
H	-1.505667	2.061186	0.416151
H	-0.338150	1.130159	-1.964779
S	3.790227	-0.513403	0.280457
O	5.181563	-0.748909	0.417988
O	2.872079	-0.854782	1.357825
O	3.599767	1.017297	-0.053932
O	3.305412	-1.258735	-1.026093
H	2.654313	1.285439	0.054607
H	2.327223	-1.383511	-1.010911
S	-3.440123	0.037646	0.642555
O	-2.099636	0.537322	0.992131
O	-4.569733	0.568412	1.311084
O	-3.611569	0.231292	-0.906138
O	-3.424221	-1.519021	0.850440
H	-2.751082	0.042048	-1.378308
H	-2.771461	-1.947577	0.223521
S	-0.626782	-1.635750	-1.502439
O	0.611065	-1.488664	-0.760904
O	-1.208152	-0.335417	-1.937963
O	-0.174986	-2.401797	-2.835240
O	-1.640069	-2.465594	-0.848575
H	-0.955554	-2.594627	-3.376479
H	-0.459240	-0.221924	1.604184
C	0.496402	0.269664	3.364541
N	0.273673	-0.630231	2.197847
C	-0.104850	-2.027789	2.550553
H	0.755501	1.255469	2.984118
H	1.317451	-0.125019	3.960328
H	-0.415785	0.321689	3.957308
H	1.148771	-0.657971	1.641472
H	-0.225250	-2.589267	1.626679
H	-1.039754	-2.016716	3.109115
H	0.691898	-2.465714	3.149354

4SA.2DMA

S	4.228417	-0.238587	0.285704
O	3.373637	0.864496	-0.125384
O	5.479814	0.027491	0.901240
O	3.391563	-1.166504	1.253067
O	4.499788	-1.149580	-0.972339
H	2.459233	-1.251263	0.916017
H	3.637841	-1.435539	-1.375529
S	-2.597633	1.357291	-1.243285
O	-3.245747	0.804595	-0.050709
O	-1.575087	2.365399	-0.972568
O	-2.145554	0.314380	-2.178424
O	-3.825858	2.115129	-1.974324
H	-0.522674	-0.045259	-2.094906
H	-3.494939	2.497005	-2.799886
S	-1.382124	0.252236	2.664946
O	-0.220353	0.619598	1.634665
O	-1.927748	-1.026456	2.245944
O	-0.924537	0.425203	4.000372
O	-2.407953	1.396956	2.366381
H	-1.755550	-2.426801	-0.580982
H	-2.789995	1.269201	1.449079
S	0.791427	-1.545821	-1.244381
O	-0.338719	-2.426704	-1.524570
O	2.065755	-1.954510	-1.801188
O	0.457140	-0.135402	-1.927956
O	0.906991	-1.251626	0.220935
H	0.169854	2.216723	-0.476821
H	0.114946	-0.185063	1.139670
C	-3.790086	-2.403336	-0.995447
N	-2.648933	-2.473072	-0.040481
C	-2.620022	-3.693635	0.812785
H	-3.665194	-1.512511	-1.605431
H	-4.723251	-2.353456	-0.436076
H	-3.773943	-3.293560	-1.623306
H	-2.642906	-1.651878	0.583414
H	-2.511181	-4.568897	0.173927
H	-3.545107	-3.754184	1.384359
H	-1.774983	-3.613051	1.492430
C	1.626701	3.054458	-1.674581
N	1.163559	2.487221	-0.377642
C	1.304965	3.407454	0.785349
H	1.488149	2.295720	-2.441513
H	2.682359	3.305228	-1.589980
H	1.035786	3.939526	-1.905311

H	1.725401	1.641173	-0.196801
H	0.714324	4.303615	0.600724
H	2.356959	3.660305	0.906823
H	0.936700	2.892687	1.669440

4SA.3DMA

S	-4.767861	-0.817303	-0.502366
O	-6.016461	-0.931299	-1.170582
O	-4.274706	0.496353	-0.115844
O	-4.826863	-1.723898	0.783435
O	-3.664423	-1.498860	-1.402346
H	-3.941625	-1.739099	1.243076
H	-2.758509	-1.351570	-0.996507
S	4.311428	-0.212272	-0.829625
O	5.688742	-0.513905	-1.074461
O	4.057454	0.757045	0.287761
O	3.778174	0.524244	-2.156107
O	3.427471	-1.390360	-0.630955
H	2.868580	0.862388	-1.973498
H	1.890538	-1.531422	-1.288592
S	-1.199374	-1.196970	1.208961
O	0.104941	-1.734422	1.593842
O	-2.355724	-1.838236	1.813410
O	-1.263089	0.312231	1.721579
O	-1.315690	-1.122191	-0.283576
H	-0.399125	0.766718	1.462537
H	-1.543373	2.730948	-0.159383
S	1.128475	2.119656	-0.240819
O	0.958723	1.378282	1.034836
O	0.100837	3.140931	-0.428037
O	2.490538	2.916129	-0.094205
O	1.271506	1.205520	-1.384516
H	3.211625	2.241347	0.043483
H	1.743177	-0.901325	1.913121
C	2.512228	0.208151	3.480263
N	2.677890	-0.654180	2.279184
C	3.441126	-1.907324	2.529449
H	1.967955	1.099789	3.179868
H	3.497219	0.478136	3.859704
H	1.955577	-0.339480	4.240207
H	3.154221	-0.105879	1.526275
H	2.894396	-2.521624	3.244001
H	4.422659	-1.650093	2.926181
H	3.556000	-2.424325	1.580061

C	-2.989924	3.179266	1.270596
N	-2.581284	2.656943	-0.063346
C	-3.207841	3.362984	-1.214682
H	-2.516892	2.565049	2.033588
H	-4.072293	3.104564	1.360373
H	-2.666283	4.215369	1.360478
H	-2.862358	1.664481	-0.105853
H	-2.820501	2.932403	-2.136361
H	-2.947730	4.419487	-1.167911
H	-4.286686	3.227114	-1.168335
C	0.918642	-1.499308	-3.131102
N	0.988500	-1.880064	-1.695251
C	0.920721	-3.343889	-1.441651
H	0.910535	-0.413963	-3.193328
H	0.007206	-1.907703	-3.567720
H	1.792591	-1.895244	-3.646602
H	0.212003	-1.427615	-1.177681
H	1.786604	-3.824300	-1.894963
H	-0.000559	-3.742772	-1.865040
H	0.925486	-3.499835	-0.364810

4SA.4DMA

S	3.911153	0.296477	0.069998
O	5.070019	0.763299	0.772866
O	3.975999	-1.055004	-0.500850
O	2.725639	0.234856	1.198476
O	3.364264	1.262431	-0.938264
H	1.878078	0.162363	0.688634
H	1.326900	-2.944675	0.225945
C	2.948609	-3.813245	1.149569
N	2.310433	-3.170113	-0.028814
C	2.317699	-4.006106	-1.260001
H	2.914022	-3.115024	1.983547
H	3.985938	-4.045052	0.911860
H	2.399977	-4.718710	1.404226
H	2.821729	-2.281003	-0.226774
H	1.854062	-3.430870	-2.057420
H	1.749875	-4.917478	-1.075113
H	3.348420	-4.247241	-1.517636
S	0.266075	-0.125167	-1.670999
O	0.366855	-1.573741	-1.892724
O	-0.995062	0.439666	-2.163935
O	0.529376	0.251990	-0.267915
O	1.389627	0.568080	-2.552096

H	-0.978850	1.066274	1.777796
H	2.220512	0.710327	-2.012272
S	-1.999569	2.995266	0.160195
O	-2.980503	1.891961	0.228831
O	-2.514676	4.322179	0.345137
O	-0.831124	2.675060	1.045440
O	-1.407591	2.975993	-1.338458
H	0.767542	2.942392	0.368731
H	-1.273635	2.040532	-1.642734
S	-1.583094	-3.081742	0.622695
O	-2.328668	-4.212064	1.097267
O	-0.196614	-2.956353	1.106412
O	-1.501684	-3.264276	-0.976055
O	-2.295073	-1.770096	0.812764
H	-0.848286	-2.615573	-1.346870
H	-3.221646	-1.055350	-0.424192
C	-0.080441	-0.211638	3.175521
N	-1.239274	0.242460	2.363800
C	-2.423587	0.619660	3.180666
H	-0.382727	-1.069065	3.775448
H	0.245393	0.602908	3.822236
H	0.725818	-0.506298	2.511396
H	-1.520699	-0.523695	1.710148
H	-2.135478	1.395656	3.889329
H	-2.786087	-0.259992	3.711472
H	-3.185001	1.008714	2.509141
C	-3.882133	-0.771117	-2.398555
N	-3.868630	-0.422457	-0.951592
C	-5.201133	-0.489707	-0.297568
H	-2.876312	-0.637541	-2.788119
H	-4.576630	-0.109996	-2.917256
H	-4.199155	-1.807672	-2.508211
H	-3.474233	0.526160	-0.789626
H	-5.087588	-0.224078	0.750930
H	-5.589470	-1.504261	-0.379448
H	-5.877236	0.213860	-0.782038
C	1.587446	4.362539	-0.904063
N	1.722226	3.282126	0.111873
C	2.423473	3.697530	1.357384
H	1.029121	3.970207	-1.750643
H	2.581136	4.683209	-1.214736
H	1.036158	5.194412	-0.467697
H	2.257363	2.490729	-0.303336
H	1.838975	4.470849	1.853953

H 3.414348 4.070788 1.101950
H 2.525483 2.823406 1.997412

Structure matching combination (B_m+B_k) before optimization for B_n (n=2-36) systems

structure matching polymerization for boron cluster 10_1-9

B	-0.44170845406	-0.206390428604	0.50995383985
B	0.747864977275	-1.08407548447	-2.01829098714
B	1.47347595806	2.6142179014	-2.19441703426
B	2.08205479583	-0.419250624962	-1.35412878879
B	1.92908113569	1.13101940075	-1.77985600043
B	0.713466825933	-0.669710569187	-0.501203638527
B	1.50409003555	2.27136668593	-0.641106512735
B	1.51952086481	-0.0457278581317	-3.01960350782
B	1.56458085722	1.53148482665	-3.35640658406
B	1.45674082608	0.740725996131	-0.132995653812

structure matching polymerization for boron cluster 10_2-8

B	0.0723563245267	0.0104843313112	-0.665486901837
B	-0.384115131358	-1.43588517952	-0.0833222147986
B	1.46102548068	0.212368376509	0.121859495956
B	0.804018695466	2.94042387976	-0.0677331647965
B	1.63230632011	1.68481008943	-0.405883973158
B	-0.700011209551	0.403491789357	1.82271892493
B	0.421664553485	-0.350468088892	1.11340586926
B	-0.393326041678	3.0471436702	0.872942978318
B	-1.06917214652	1.91925711793	1.71975773394
B	0.307132069816	1.4070376328	0.740309113373

structure matching polymerization for boron cluster 10_3-7

B	-0.140196906604	-1.4291953993	0.310492678659
B	-0.225720549497	-0.160204902923	-0.596449499242
B	1.16831804463	-0.779937120412	-0.256872755086
B	1.25273781813	0.823043833175	-0.0323098685699
B	-1.18675723645	0.565907420683	1.4003357521
B	-1.92648653048	1.75364059397	0.716069918458
B	-1.30204894407	1.86582044611	-0.706486969069
B	0.367826629152	0.11124122778	1.03317300255
B	0.252609108898	1.4099855934	-1.07168815814
B	-0.20786356404	1.59054058132	0.521288747257

structure matching polymerization for boron cluster 10_4-6

B	-0.687008484246	-0.0911935752986	0.267898800828
B	0.295036697795	1.11836048548	0.0161651033263

B	0.263911674985	-0.861281397154	1.26455317076
B	1.24595685703	0.348272663629	1.01281947325
B	-0.416218934087	-1.79861555458	-2.07088405764
B	-0.146360413664	-0.430881436415	-2.81030644725
B	-1.19298477328	-1.93191864683	-0.736975604003
B	-0.996287585912	-0.305238779288	-1.28266749749
B	-0.548524900346	1.02785818979	-2.39970166675
B	-1.20892131396	1.36481899604	-1.03161798514

structure matching polymerization for boron cluster 10_5-5

B	-0.852650466648	0.0244455120301	0.83789000738
B	0.11361459448	-0.715404028635	-0.220984093582
B	-0.432705971664	-0.407848988999	-1.8417842681
B	0.838043379608	-1.29451989432	-1.54065869045
B	-1.26526157219	0.241520424581	-0.670194262857
B	-0.780917625787	0.801808960509	2.26007955646
B	0.541492764376	0.391862400119	1.43216986907
B	1.70817164981	1.67815155943	1.49827619298
B	1.9866276041	0.334526959135	0.718019160563
B	0.345055285525	1.90809382435	2.257547512

structure matching polymerization for boron cluster 11_1-10

B	-0.0848567059972	0.0410945976871	-0.132526068684
B	0.546775006393	0.125634954612	1.30828805878
B	1.24576230575	-1.4344553855	3.80410413953
B	2.61938577211	-1.96644933291	3.48638120135
B	3.15340662161	-0.98985771371	0.9208362276
B	1.90868582445	-0.988944488001	2.20232520269
B	-0.859968975356	1.00612328779	0.943799727599
B	3.48028512487	-1.77431888129	2.20299175309
B	1.90372327596	-0.211282172042	0.602949165737
B	-0.804328268113	0.325292976304	2.29115151081
B	0.176541922479	-0.566727196673	3.118364609

structure matching polymerization for boron cluster 11_2-9

B	-1.26041960129	0.269388288591	0.0796421314503
B	-0.0780010685169	-0.840267473632	-0.0194395391747
B	2.44791820965	-0.039363542381	1.45790838347
B	3.60811828235	1.77408085114	-1.64052039105
B	1.68702773829	1.28305023096	0.878742177492
B	2.6205365904	1.68123969585	-0.377437795733
B	1.22551332788	-0.232435664025	0.486885726662
B	2.08729669975	1.40960562078	-1.93295375837
B	3.4702008729	1.17975977235	1.07722233716

B	4.27604902392	1.75468367908	-0.196801927553
B	1.14289143751	0.814308446687	-0.768050548217

structure matching polymerization for boron cluster 11_3-8

B	-1.0164796887	-0.50203486716	-0.119363874678
B	0.344111895403	0.165693211697	0.258954828849
B	0.284175857541	-1.37062175946	-0.0218795872328
B	1.45062790976	3.90467993844	-0.105513031772
B	-1.36646868862	2.80190958658	-1.00270332338
B	-1.7271724602	1.33897589959	-0.852832524449
B	2.61656329882	3.13594087664	0.515572596676
B	2.66822217043	1.62842238934	0.842590104496
B	1.22094398624	2.18996043313	0.151327256397
B	-0.286499119456	1.6551539841	-0.342080483627
B	-0.000959859813056	3.4633467875	-0.593714977264

structure matching polymerization for boron cluster 11_4-7

B	-1.28325717543	-0.0358584291892	-0.771695029019
B	-0.242245959092	1.09943632149	-0.427885348345
B	-0.213638718189	-1.18342207295	-0.943794927784
B	0.827372498148	-0.0481273222689	-0.59998524711
B	1.86014125219	0.505594354097	0.735608465838
B	0.265720364375	-1.2927631224	2.25002622511
B	-0.432326821925	-0.217442005071	3.13464132265
B	-0.463350056873	1.07576735868	2.26698827149
B	1.38625657863	-0.938052651068	1.07663801105
B	0.657844313701	1.4282903831	1.09362997849
B	0.966142886638	0.219802316876	2.2012035386

structure matching polymerization for boron cluster 11_5-6

B	-0.768612496276	-1.0066059157	1.37637628218
B	-0.205796595046	-0.159893837343	0.123947924731
B	0.110384744429	1.47922508882	0.607029673075
B	0.367577998749	0.976354747368	-0.866957732314
B	-0.449296975207	0.502474152829	1.71164118189
B	0.0667479890986	-2.18118665523	-0.800519438486
B	-0.629266793193	-1.35837243195	-1.93242215484
B	1.46025203937	-1.86821247808	-0.212145764349
B	0.934608812284	-0.807801215891	-1.44662250731
B	-0.0826176647384	-0.0989562943173	-2.6792623934
B	1.28705640062	0.561850370846	-2.40801639854

structure matching polymerization for boron cluster 12_1-11

B	0.319729250776	0.382842485738	0.291651155153
---	----------------	----------------	----------------

B	-3.00356656405	-1.86779442077	-2.09950613342
B	-0.848632817994	-0.656940110013	0.144969643166
B	-2.08462662439	-2.57559992016	-3.22059160201
B	0.313309929548	-2.15780131463	-1.84989099529
B	-2.44732459373	-0.266844381941	0.140490856523
B	0.478880475631	-0.990925817411	-0.730941533348
B	-0.555149278651	-2.22294813157	-0.406293531168
B	-0.539532042916	-2.73119997752	-3.13519258114
B	-2.15052031179	-1.77065788537	-0.498761057116
B	-1.43083016252	-2.70058445006	-1.73416565259
B	-3.42281805715	-0.84681480475	-0.922986394725

structure matching polymerization for boron cluster 12_2-10

B	0.517844322056	0.743816318891	0.222231932699
B	-1.00455998595	0.24070364379	-0.0393582694079
B	0.662439323282	-3.69105579579	1.41506058803
B	0.69136727103	-0.998670734452	0.45804917343
B	1.26981913053	-1.78271562862	-1.03328892027
B	1.04839569963	-0.166065885759	-0.887724317527
B	1.57288246794	-0.830514167398	-2.25493798447
B	1.1869260916	-4.35550407743	0.0478469210906
B	1.5439545202	-3.52289922874	-1.29792656987
B	0.965502660694	-2.73885433457	0.193411523838
B	1.80621968191	-2.40973172945	-2.44852707627
B	0.429102109317	-2.11183823374	1.60864967984

structure matching polymerization for boron cluster 12_3-9

B	-0.306456112059	0.615762033279	-0.431310053302
B	0.582109287607	0.131175099675	0.758573269446
B	0.386803873182	-0.78837246727	-0.49003077336
B	-3.36198667106	-0.0163273322497	-1.10772507613
B	-0.843060450458	0.305317541885	1.68269799537
B	-3.71592961304	-0.389745403256	0.440967704744
B	-2.29796133354	-0.14694031346	1.1747206596
B	-4.02124901751	1.08196127632	-0.194724073947
B	-2.08286239688	1.18275409573	2.15625261903
B	-2.22195233309	-0.944335600446	-0.389833908635
B	-0.901336258775	-0.781738926408	0.522636405383
B	-3.47855931795	1.1429601346	1.34771934264

structure matching polymerization for boron cluster 12_4-8

B	-0.680913644463	0.435726471883	-0.228395119351
B	-1.16307561036	-0.600101963044	0.858924869993
B	-0.340300433747	-0.642217843397	-1.32826063887

B	-0.82246239964	-1.67804627832	-0.240940649526
B	2.56980476069	2.1865684824	0.140985065726
B	0.746243050938	1.06939652588	2.46125134855
B	-0.310324344837	0.0168617721277	2.1993747172
B	2.56440484151	1.80273067739	-1.33845801016
B	1.64940935248	0.768648919034	-2.02815305225
B	1.41223258249	0.974135513341	-0.358031535248
B	0.469425871184	0.416013139814	0.907459979556
B	1.70887825585	1.6985859677	1.39034560659

structure matching polymerization for boron cluster 12_6-6

B	1.89954590428	-0.756783509122	-0.381680296402
B	0.811260583597	-1.65154341127	-1.09252872439
B	1.6215632499	0.643561764259	0.220154735156
B	0.256301148518	-0.0794654592063	-0.551757077327
B	-0.704835078035	-1.35978793434	-1.36563409538
B	-1.36425503962	0.0168677141795	-1.06346939265
B	-1.01336019725	1.7736002275	0.0263693801444
B	0.18719788895	1.74261997405	1.02655140761
B	-2.28560692347	0.906156901687	0.14851805277
B	-1.12228033448	0.67252296135	1.38009919315
B	0.348162657632	0.860837603369	2.30689308594
B	-0.694482263317	-0.161786700003	2.81025973832

structure matching polymerization for boron cluster 13_1-12

B	0.145894437762	0.120663076279	-0.539796038518
B	-2.63040769864	-0.490157100249	1.43526297229
B	1.02356570683	-2.45318672156	0.0940284187521
B	-1.72383906572	1.86792453463	2.49850229757
B	2.09672836206	-1.43951625846	0.470769013123
B	-0.218856825924	1.77039551058	2.29097481711
B	-0.481249136478	-2.3544025098	0.302624504012
B	1.92719478899	-0.0866117246574	1.14799196396
B	0.398135594456	-0.940991496805	0.896840070556
B	-1.10221087749	0.358474146186	1.69133823408
B	-1.56689230479	-1.43258551899	0.865097453223
B	-2.80133101144	0.86116746425	2.11542268759
B	0.880002876674	0.866543605999	1.72765291611

structure matching polymerization for boron cluster 13_2-11

B	-1.37879166923	-0.229639451529	-0.86399283329
B	0.165664179606	-0.205167778956	-0.360679866069
B	-0.698253943414	0.793469630122	0.736942897598
B	-0.177757316478	0.180069269477	2.07932540052

B	3.41185510536	0.55607973206	1.43117172183
B	1.77297918665	0.17360933802	2.17915392306
B	2.75115908418	1.14896370908	0.126563037028
B	0.0177704173097	1.3801169933	-0.491452939476
B	1.55857367251	1.53220409906	-0.750251894396
B	0.594835211823	-0.382121887923	3.32008364026
B	1.02837845847	0.838963225322	0.716609777747
B	3.33463264413	-0.0889732910123	2.81382668877
B	2.0854076199	-0.512530575586	3.6668288415

structure matching polymerization for boron cluster 13_3-10

B	-1.19148119009	-0.691833213925	-0.700010130623
B	0.150827395479	0.105965029665	-0.656181930852
B	0.176183162654	-1.4565503421	-0.681217636312
B	-0.667066540003	0.134156931991	0.828616237276
B	0.716271170487	2.77793472497	1.32647260129
B	2.17228220111	2.42087169396	1.17523942469
B	2.14871620275	-0.313413774644	0.588430074656
B	1.06746703753	1.06484756156	0.940129506736
B	-2.3259363882	-0.234262511347	0.833834477873
B	2.82266185359	1.04507435562	0.846058065825
B	0.677097328677	-0.634650599019	0.594798485932
B	-1.93850907075	1.19715849602	1.12186756588
B	-0.643232655673	2.06306737861	1.2419890398

structure matching polymerization for boron cluster 13_4-9

B	-0.200119588887	-0.00726331011132	-0.35027537525
B	-1.06173331968	-0.553450715982	-1.64068872405
B	0.481753127503	0.663448719736	0.838477362898
B	-0.635098680603	1.53070068789	0.271733010368
B	0.775153079212	-1.30164985787	-0.29264489462
B	2.65720627631	-3.75019544639	1.8747050799
B	1.06409453848	-1.03009763517	1.29037065013
B	1.81404110406	-2.39093870918	1.73045413325
B	2.04716862	-0.470413630016	0.114120807801
B	3.45389472551	-2.38160638088	2.02803230719
B	0.436994478544	-2.59045659611	0.656497517357
B	1.17877279733	-3.87070054461	1.29977578234
B	2.85494260822	-1.00708840495	1.43201535366

structure matching polymerization for boron cluster 13_5-8

B	0.500664451283	-0.261087060181	-0.831119841395
B	1.28946297419	-0.0726881075258	0.522570558535
B	-0.582742033374	0.982899083707	-0.0806554359237

B	1.53630775133	0.929144480964	-0.783768900103
B	1.02369434503	1.4804189422	0.603269514283
B	-1.44739381962	-0.307686592566	0.355176979681
B	-4.00069046621	-1.42560780727	0.730434909468
B	-2.98986810674	-0.263428064295	0.662990477338
B	-0.963821717776	-2.99275755509	-0.0398957745303
B	-0.552520970623	-1.52525566835	0.0438116572785
B	-3.73426165667	-2.91243652242	0.510773350038
B	-2.38162553336	-3.61835443109	0.167194120885
B	-2.29447073699	-1.86446916255	0.346615979712

structure matching polymerization for boron cluster 13_6-7

B	1.94505131664	-0.339486880927	-0.588064179268
B	1.1802946696	-1.32486127186	-1.55473386938
B	1.26057455149	0.515031314882	0.508173412236
B	0.167659108065	-0.425901129565	-0.441952256351
B	-0.351256161773	-1.64543566855	-1.65392038208
B	-1.42650938251	-0.876441746517	-0.833068491001
B	-0.79250927679	1.16974191348	1.30292161954
B	-1.30413564298	2.72901241197	1.30933485406
B	-0.280882910601	-0.389528585014	1.29650838502
B	-1.68832346066	-0.0327829755892	0.679991570048
B	0.643112460674	0.727109225053	1.91908518343
B	-2.22813101426	1.6123746019	0.686758055648
B	0.103304907082	2.37226680255	1.92585166903

structure matching polymerization for boron cluster 14_1-13

B	0.685168007565	-0.482143293983	-0.0726677588961
B	-0.822665895829	1.10228196545	-1.7027492379
B	-4.48855079164	2.52568065775	2.26635023156
B	-1.50233348275	1.47246323387	1.56070011935
B	-2.96917313666	1.991206385	1.99971142183
B	-2.71847280953	1.63111888938	0.28974897547
B	-3.80956817034	2.15424420656	-0.997004403374
B	-3.97485523774	2.57495892494	0.693074266392
B	0.266114691814	0.911717970338	-0.58678552835
B	-1.15822780731	1.57377082425	-0.151616335176
B	-0.079110837574	0.961769162839	0.944678154644
B	-5.49527501403	2.9562615155	1.1405096337
B	-5.23189715249	2.66710601958	-0.38059688182
B	-2.34349770999	1.63321879326	-1.43530246632

structure matching polymerization for boron cluster 14_2-12

B	-0.00342626690624	-0.710961337365	0.165499333318
---	-------------------	-----------------	----------------

B	0.479332214972	0.677893021134	0.856364366285
B	-0.985365601728	0.437836689128	-2.13351819897
B	-3.15193651526	-0.355389178636	-5.23658670443
B	-2.19755784424	1.50620010647	-1.4140508866
B	0.312820971602	0.552665071062	-0.859552931624
B	-0.641557699418	-1.30892421404	-4.68208874946
B	-1.85374994193	-0.240560796702	-3.96262143708
B	-2.84068879413	1.03365503836	-2.72017329797
B	0.00157325047731	-0.836379145933	-3.37596633808
B	-3.44273358304	0.534038484004	-4.03583932671
B	-1.90237644514	-1.17764012254	-5.52508681469
B	0.603618039383	-0.336762591579	-2.06030030934
B	-0.93673909851	1.37491601497	-0.571052821369

structure matching polymerization for boron cluster 14_3-11

B	-0.0625052004259	-0.685390895869	-0.979343001121
B	0.326525189303	0.66060980129	-0.28859502496
B	1.03876367575	-0.664440042409	0.135295572518
B	-2.65456659549	0.00684940479296	2.69819675875
B	-1.35809975871	-0.768913853706	1.96136465905
B	-3.57554896306	3.12366182553	1.33787594715
B	-1.25380006566	0.874381833096	2.56469531178
B	-2.04993524998	3.07685996121	1.06851046765
B	-4.02755294316	0.715196196212	2.62340002777
B	-4.44836315706	2.08142594836	2.02439652767
B	0.115070161916	-0.941154228125	1.54749379895
B	-2.73033285683	1.66557006048	1.88887634693
B	-0.984648152598	2.00137551256	1.38617526307
B	-0.312122718968	0.480682662653	1.13860194627

structure matching polymerization for boron cluster 14_5-9

B	-1.604374871	-0.460373505673	0.161618923919
B	-0.0712187098228	-0.0754445322383	0.483366874527
B	0.0150983858799	1.5343744421	1.13227495583
B	1.30290718207	0.645925262845	0.922817604646
B	-1.41658711938	0.989352153025	0.7572017335
B	1.95004130363	-1.86789655938	-0.218025614669
B	0.959527663743	-1.42445712721	-1.86980181927
B	-0.0309859761393	-0.981017695038	-3.52157802387
B	0.457067572223	-1.78174615454	0.00687073465983
B	-0.944043484401	-1.15639966495	-2.32880346607
B	-0.741282240641	-1.4871375882	-0.86713622384
B	1.46198775526	-1.06716809987	-3.7464743732
B	2.86309881189	-1.69251458947	-1.41080017247

B 2.66033756813 -1.36177666622 -2.8724674147

structure matching polymerization for boron cluster 14_6-8

B 0.310429847513 0.530822606463 0.508324791521
B -0.501123614247 1.54950469916 -0.501326743709
B -0.987416448749 0.0193020730066 -0.374242388638
B 1.80509774609 0.175864305894 -0.119727122014
B 0.481860360109 -0.689123902951 -0.584707901659
B 1.14817380431 1.63439277075 -0.386143351374
B 0.0372999347595 -1.11278046808 0.960371926924
B -2.63145434676 -1.05686168791 1.84609976126
B -1.20847651099 -0.484874771903 1.6881839748
B -0.931977778618 -3.51572865743 0.0191645925859
B 0.15335545072 -2.4615469536 0.220385225075
B -3.16948084478 -2.38663515928 1.32444360849
B -2.41647894319 -3.48846568496 0.508999624255
B -1.45187661743 -2.07350942801 0.93718514623

structure matching polymerization for boron cluster 14_7-7

B -0.231370841047 -0.641039423014 0.0407999900104
B -0.994819120964 -0.178319461272 1.41781274105
B 0.532077438871 -1.10375938476 -1.33621276103
B -0.0905140783867 0.342620400695 -1.24339770935
B 0.433272611903 -2.11290655395 -0.127863096402
B -0.896014293997 0.830827707927 0.209463076422
B -0.372227603707 -1.62469924672 1.32499768937
B 1.04470117449 2.89446429413 -0.184222857513
B 1.06716333994 2.94119374542 1.4560329046
B 1.02223900903 2.84773484285 -1.82447861962
B 0.975251016656 4.24178604853 -1.08782220077
B 1.09045191535 1.49783915655 -1.01122715145
B 0.998950433623 4.29108943172 0.642781436428
B 1.11415133231 1.54714253974 0.719376485739

structure matching polymerization for boron cluster 15_1-14

B -0.670912138012 0.212158245628 0.0212005498251
B 3.76584974815 -2.27002223077 -2.31477156405
B 2.28226280149 -0.961547584905 -0.253961011223
B 6.37479143333 -2.35770106548 -0.343562120057
B 6.34610008764 -1.66426859062 1.0480605698
B 1.06643296813 0.00461036269805 0.108422465033
B 5.15896159998 -1.39154311787 0.0188213561992
B 5.14804086795 -2.36599953934 -1.46703497181
B 3.73612027299 -1.55145946702 -0.870502804198

B	2.35803303263	-1.55929467571	-1.92642286292
B	5.08319136884	-0.793796027065	1.6912832079
B	2.29318353351	0.0129088365651	1.23189531679
B	1.09512431383	-0.688822112162	-1.28320022482
B	3.70510412847	-0.801631235758	0.635363149174
B	3.67537465331	-0.0830684720049	2.07963190903

structure matching polymerization for boron cluster 15_2-13

B	1.05340767541	1.17244194594	0.31282245618
B	0.497916505702	-0.0529186039002	1.22341992927
B	-1.51097298442	-1.32077754022	-0.700005108573
B	-0.57916508054	0.19518892457	-0.722366790467
B	-3.22404068742	-3.0386817827	-3.05526527716
B	-1.52879149446	-2.00961635407	0.781414251151
B	-2.76400337571	-1.87631239151	-3.99367504194
B	-2.3581275334	-2.84617545032	-0.347902691074
B	-0.769039275952	-0.711286868989	0.621961738201
B	-2.00053608404	-0.571891364829	-4.15354855061
B	-1.12804721006	0.545171376893	-3.49537670515
B	-1.42734119003	-0.509932704473	-2.2140538458
B	-0.531751532288	0.895434282403	-2.12006770755
B	-2.32780111126	-2.04886638141	-2.02553251658
B	-3.08528028608	-3.46987124588	-1.58459258966

structure matching polymerization for boron cluster 15_3-12

B	-0.323185470661	0.405192632195	0.41291196309
B	0.0470993047331	1.04856854322	-0.961552263318
B	0.881370411462	-0.155952992906	-0.417637216672
B	-1.88808612406	-1.52192877601	1.18758445356
B	0.567678069203	-2.87666787989	1.2187650445
B	-3.21706597063	-0.46479016148	0.774894424486
B	-2.53033128672	-3.16095704081	0.853412384865
B	2.50679406054	-0.929075215752	1.04766112457
B	0.913629861936	-1.14898089757	1.45691263957
B	-1.9519891848	0.260036838811	1.3098516886
B	-0.472699563643	-1.89022180273	2.10692107168
B	-0.594233425398	-0.313332420634	1.76350014252
B	2.03982370938	-2.37364230055	0.988506858416
B	-1.04972218016	-3.23465034256	1.30272293312
B	-3.47213681252	-1.96101887794	0.593701778612

structure matching polymerization for boron cluster 15_4-11

B	-0.387021510304	-1.17824077266	0.946750796271
B	0.381151037866	-0.0339926301247	0.198855458938

B	0.793080495832	-0.322688139953	-1.28630760797
B	0.0249079476615	-1.46693628248	-0.538412270641
B	-0.13575307879	1.33108211965	1.07298756595
B	0.988440046108	1.75755143575	-0.101936739433
B	-3.1282281923	3.19081633021	1.10554262484
B	0.317855851279	2.9196320571	1.02707439472
B	-2.09626383284	4.22334787948	0.584454649798
B	-1.57155082335	0.935877427726	1.49081053124
B	-2.89666238879	1.73967158447	1.50571384035
B	2.00410630352	2.68759358334	-0.790994405138
B	-1.46039854345	2.61303318299	0.941664729356
B	-0.578976472499	4.10693160758	0.307263170078
B	0.711084575975	3.49716639558	-0.581266575511

structure matching polymerization for boron cluster 16_3-13

B	-1.4349727342	1.02499091164	0.390161127671
B	0.0530258320728	1.17276324577	0.842066971274
B	-0.670678145917	-0.204605136512	0.989826506372
B	1.24912075162	-1.37364026616	0.740258117583
B	2.29398608473	-2.15736317318	-4.69228837055
B	1.80239990614	-0.0377246055243	-2.2860094569
B	2.05459116522	-1.02419928332	-3.54168108187
B	1.58150718353	-1.76857680638	-2.01243980727
B	1.73935509717	-3.49347168835	-1.66645552421
B	2.28679755039	-2.70849819648	-3.13097250137
B	1.39740356563	0.173723815188	0.514848685407
B	1.79740319688	-0.814145698124	-0.718257912794
B	1.53126987906	0.8078966763	-0.915875394456
B	2.39511296946	-3.70071256936	-4.4197877627
B	2.01281673658	-4.33865627218	-3.03645076375
B	1.48485724356	-2.50665790831	-0.411718629872

structure matching polymerization for boron cluster 16_6-10

B	1.01254753671	-1.04907102831	-0.259678940934
B	0.431648617157	0.294610134421	-0.952133506831
B	-1.76240474458	-1.22436223734	-0.655280752785
B	-0.502821449344	-0.511126688414	0.142029894129
B	-1.20730924362	0.201081750199	-1.16662136797
B	-0.307262232449	-1.98660258985	-0.563192130554
B	2.42272569503	1.82583777491	0.740769588118
B	0.529329392987	1.87597910381	3.57665303685
B	2.12020982757	1.73366259585	3.56587419299
B	0.646204613039	2.05871585041	0.794619849117
B	1.4943065944	1.69323836272	-0.572331294654

B	3.00930228335	1.7163615369	2.23921434642
B	-0.990123246312	1.85216292215	0.766594109658
B	-0.387366405934	2.00667436237	2.25580734652
B	-0.104187720932	1.68362863958	-0.553818335117
B	1.40920766675	2.13325847414	2.20015754134

structure matching polymerization for boron cluster 17_1-16

B	0.443834640171	0.710027266211	-0.641939724044
B	-2.27955655113	-2.24983720152	2.49851324237
B	-2.42603248846	-2.97661432013	1.03053214173
B	-2.02057144469	-3.38266599345	4.01384048435
B	-1.13501881662	-3.28606677749	-0.00239201981866
B	-1.82092189955	-5.50630986404	2.16922685429
B	-0.279115899924	-0.557422478646	0.312754781852
B	-1.32906704667	-1.67060557647	1.09000533588
B	-0.672961166935	0.535114755998	3.18595901205
B	-1.63134460781	-4.56505935929	0.857273114139
B	-1.94723844192	-4.93453224971	3.61767719322
B	-0.470233442443	-1.88916891486	-0.413075905741
B	-0.356564610136	0.202817333556	1.69342862588
B	-2.21114885559	-3.93168195363	2.38249353414
B	-2.01951704354	-1.74632054645	4.14807239161
B	-1.43476779211	-0.273214929877	4.27752799305
B	-1.2206584785	-0.970314719296	2.77259884341

structure matching polymerization for boron cluster 17_2-15

B	0.641530599708	1.078013214	-1.08136260759
B	0.390157679808	0.489305036633	0.411788761754
B	-1.68267689457	-2.48944588038	1.4720020425
B	-2.19087461565	-4.14069973347	1.69379281936
B	-2.18539527767	-1.31265338846	-1.52102750949
B	-1.01763963016	-0.715129287147	-0.709264435692
B	-3.30218769082	-4.64124750413	0.614898820307
B	-2.72925718743	-3.14220222301	0.378979094888
B	-3.76143504133	-3.87731157111	-0.650482040326
B	-0.183181818669	-2.1017293238	2.1172419339
B	0.234730954388	-0.470958835197	2.20579221855
B	-1.15431972895	-3.44745799362	2.74372472916
B	-3.18699581042	-2.51179943382	-1.24546901987
B	-2.14948308932	-1.55916073386	0.116828571194
B	-0.064873033355	-2.71867880199	3.67481749912
B	0.722866922784	-1.42017286349	3.33351006049
B	-0.622197806117	-0.807062663492	0.878964035137

structure matching polymerization for boron cluster 17_3-14

B	-0.006044002986	0.669032138672	0.942487793455
B	0.437769705492	1.2410000076	-0.44173669576
B	1.12114288743	-0.0465592897344	0.122103830058
B	-1.69908650282	-0.128032489361	0.495629043798
B	-0.46250616794	-3.28091275995	-2.76572695276
B	-0.633780928037	-2.1965399235	-1.37154366535
B	-1.71196574261	-3.76287564639	-1.93967672036
B	-1.31480882547	-1.75738060004	0.252519733094
B	0.492170893235	-0.889707968037	-1.61444295725
B	-0.474803560387	-0.392589226568	-0.45203508723
B	-3.08029739569	-3.66868718787	-1.02920758082
B	-1.54475958335	-3.22524377645	-0.360680647492
B	-4.35445123131	-3.08559408269	-0.204149551946
B	-2.89747267748	-2.51032265241	0.248223798801
B	-3.07688500966	-0.800567192157	0.849344464022
B	-4.30148206185	-1.80303118859	0.656293271337
B	0.451644266466	-2.02918084556	-2.63499977434

structure matching polymerization for boron cluster 17_5-12

B	-0.304614910428	1.00797236591	1.06003750162
B	-0.198690812375	-0.203032956018	-0.000389803086436
B	1.13221532551	0.0690677879817	-1.08422535629
B	0.211559837228	-1.20851540988	-1.19303926194
B	0.877726368247	1.16058516881	0.0254042132773
B	-3.16065921113	-0.490932334618	2.46372766485
B	-2.38886358909	-3.93938372329	0.893764134069
B	-4.55046207374	-1.08782441849	3.38057633347
B	-3.1888817853	1.25770629004	2.97649260665
B	-1.02728330064	-1.59385301475	0.489680407251
B	-2.41708616326	-2.19074509863	1.40652907587
B	-4.03576226773	-2.32038622779	2.63308217996
B	-1.54198310666	-0.36129120545	1.23717456076
B	-3.48496642006	-3.52466308839	1.86536289164
B	-1.29236809343	-3.07819858653	0.279934283514
B	-2.09277895433	0.842985655143	2.00489384908
B	-4.28537728095	0.396521153282	3.59032245721

structure matching polymerization for boron cluster 17_6-11

B	-1.8438009578	0.372811599237	0.109743319777
B	-0.906992443976	1.15733626336	-0.864717783761
B	-1.44730042348	-0.91087126208	0.871934629061
B	-0.230060349315	-0.254281214685	-0.134008603723
B	0.5670892419	0.819975456425	-1.25968042578

B	1.36729092108	-0.390258231841	-0.729342254255
B	3.15058112191	-1.7772414762	2.3247309247
B	4.16622702141	-1.00840500062	1.22769525359
B	-0.266525219445	-0.941693746056	2.12517463365
B	3.08927969099	-0.125988182303	2.29367165114
B	0.426901093368	0.366732492358	1.66715144155
B	1.88336947592	-2.60451334956	2.64422088372
B	0.376329370141	-2.25326866544	2.55655613956
B	4.88797055591	0.199516211027	0.602099996031
B	1.50548608528	-0.969769368406	2.08602411945
B	1.92064789682	0.731548626476	1.49928698997
B	3.39578318489	0.563966342091	0.710967073196

structure matching polymerization for boron cluster 18_1-17

B	0.793348935758	0.381218556412	-0.26193742494
B	0.154836087115	-3.18817821556	-1.47990298093
B	-0.807097768777	-0.801304993852	0.639425310886
B	-0.498373770278	-0.31117721833	-0.999093597914
B	-0.138748940847	-3.5327883009	-0.011382343458
B	-0.0995119731296	-0.293746659344	-2.64776279949
B	-0.607976786777	-2.50982278283	1.12905166306
B	-1.08308608972	-1.46412454615	2.27792941949
B	-0.968219111574	2.0933921411	-0.912355068152
B	-0.48998008041	1.04364395275	-2.06854916484
B	-1.55194306172	-0.423287692529	3.403033583
B	-1.63153643182	1.96044504992	1.90677606344
B	-1.30214975347	0.194702960227	1.9078046356
B	-1.78630902433	1.0832786475	3.20872485921
B	0.0757148347503	-1.79832125337	-2.2186502432
B	-0.317475400326	-1.97093994136	-0.473026571589
B	-1.04623998514	0.892012638562	0.325579273243
B	-1.38883465144	2.54550075518	0.46533418562

structure matching polymerization for boron cluster 18_2-16

B	0.529730708029	-0.833377936698	-0.480828224259
B	0.484792793599	0.615459822154	0.252735956364
B	-2.01220949676	-1.52452708371	1.20334291015
B	-6.04780758412	-0.593859198206	2.05100111597
B	-5.03953564817	-1.76290774015	2.20524768286
B	-1.07105415826	1.166249885	-0.396434657636
B	-3.96235693472	1.18933224401	1.27869099297
B	-4.49664013981	-0.300728457561	1.79616534808
B	-2.85107593473	-0.142221122059	1.42887403974
B	-5.67955781998	0.896183852044	1.46822180749

B	-3.55474622508	2.38813462082	0.197081793221
B	-1.98304315635	2.43449085164	-0.679529327428
B	-3.19890927736	3.49343140174	-0.921842270403
B	-2.36114106938	1.25618138358	0.600260591622
B	-4.6377533946	3.43259016841	-0.344939318415
B	-1.45421681009	-0.178648206117	0.455163906906
B	-3.4550260577	-1.76862281014	1.81981518779
B	-5.20211168139	2.25997745718	0.655634250304

structure matching polymerization for boron cluster 19_1-18

B	-0.0326601575283	-0.681777000144	-0.02275145736
B	-1.73840607082	1.51206099142	2.78772116171
B	0.741860964092	4.07712096044	-0.512834299945
B	-0.566327206979	0.889742461753	0.363124596335
B	0.0765867084914	2.61270224005	0.0117437028328
B	0.21782297739	1.03322360832	-0.983886284835
B	1.70296632913	4.88715639623	-1.88578464694
B	-1.35190169037	0.589246713328	1.64537702088
B	1.8542576065	3.60710672023	-2.75261635364
B	0.925525059499	2.56666445624	-1.54940990423
B	-0.834862608085	2.24165781166	1.49252006533
B	-0.225147323524	5.43091729686	1.8983577336
B	0.956156790914	1.01378118975	-2.32801278124
B	1.27582244552	5.71429215709	-0.719974402795
B	-0.933969126905	4.39087641309	2.69970701885
B	0.559746944664	5.80156742247	0.633885863343
B	-0.169040165185	3.90709681559	1.07268429679
B	1.65497440377	2.13999691072	-3.06928683207
B	-1.49222848115	2.98334061665	3.0453791102

structure matching polymerization for boron cluster 19_2-17

B	-0.324357236587	0.609817212896	-0.269283910747
B	-0.66549578993	-0.905486579178	-0.745462007548
B	1.40806741233	-2.42482471683	3.43041419594
B	2.09258582046	0.527950168319	2.04239836222
B	2.77390814924	0.227765033023	3.61273868423
B	0.845902411305	-2.07532102477	2.04357648983
B	3.21317269996	-0.478199047558	5.09130760899
B	1.0789763777	-0.708383481856	1.24084289409
B	1.32129656799	0.681598195039	0.435631360122
B	3.99830761967	2.30691237087	4.0465869364
B	3.75531924776	0.910371426898	4.85781974023
B	1.56766613731	2.05700039856	-0.349606443761
B	3.19413043354	3.42644469135	1.49607491521

B	2.2780069679	1.92798445723	1.1196755374
B	2.40020597438	3.25088665407	0.144294811641
B	2.3216054925	-1.56793994797	4.38692176749
B	1.77626607256	-0.951280701328	2.78881849614
B	3.05242925753	1.82822970138	2.68348076834
B	3.87345074954	3.29296941135	2.91016730169

structure matching polymerization for boron cluster 19_3-16

B	-0.558911433858	-1.00262686201	0.131960638926
B	0.661572232006	-0.03340199857	0.237876043365
B	0.625609421642	-1.11730068086	-0.887554679197
B	0.482987839326	2.08697061625	-0.725965902102
B	-2.05748601015	4.54543903284	2.02043779108
B	0.246320754098	5.35995831421	0.462639980698
B	-1.77520980584	1.40961978032	0.946539831438
B	-3.17929493817	3.4075555397	2.3788131929
B	-1.75445335643	2.88677800866	1.77483777855
B	-1.95356092347	0.0499013597424	0.123736720694
B	1.26186540182	4.81006135144	-0.68831976562
B	-3.23256390394	1.90000865989	1.88395436587
B	-3.08849979806	0.484446805275	1.08798901645
B	-0.459274927824	2.40315427476	0.71747594049
B	1.37983969737	3.36362756868	-1.23660433575
B	-0.953295403823	5.62176896191	1.469156971
B	0.449652345156	3.62144797712	0.038465004121
B	-0.599377718583	4.0369408473	1.30112692178
B	-0.647150904805	0.964398694402	-0.265748618336

structure matching polymerization for boron cluster 20_1-19

B	-0.355734214328	-0.282883275529	-0.793852319384
B	-1.39824014208	1.6183119367	1.06323113281
B	3.60507454438	0.114280724436	1.11441983772
B	-1.60198127129	1.63163082463	2.68098655343
B	0.845239903435	-0.193662633779	3.01228947502
B	-0.171585106954	1.35847238688	5.1447696822
B	1.09554383015	0.508071088145	4.57982865748
B	3.22734221769	0.394196248084	-0.440466167015
B	3.69319135334	0.0955624916597	2.70175368608
B	-0.91588635438	1.78401476436	-0.470509130904
B	2.46541451462	0.136591518818	3.73345606621
B	1.9144544238	0.802213180726	-1.14810752009
B	-1.40283016468	1.86085877188	4.2761951788
B	1.86755551218	-0.177179877072	0.326431713513
B	0.688218930602	-0.540012014795	1.39136957957

B	-0.0312655779164	0.682192430353	0.390913809072
B	-0.527079246273	0.432978355324	1.98764743802
B	2.22286724175	-0.211252265032	2.06096671915
B	-0.338459246703	0.809194746016	3.61886029185
B	0.387974384262	1.31912506777	-1.15424262318

structure matching polymerization for boron cluster 20_2-18

B	-0.398443268193	-0.0194973214867	-0.290007631443
B	-0.0931130580348	0.383664669568	1.25385134737
B	-2.07462236191	-0.0237990409627	-2.82607828479
B	3.4050302241	-0.122026902614	-1.11483346091
B	-1.87929458041	-1.39193215064	-3.56374611178
B	1.97216990508	-1.03591248938	-1.53976563824
B	0.917608870795	-3.04699345673	-3.54502705846
B	2.4502183558	-3.56277693496	-3.53501113454
B	3.05464244857	1.34021900323	-0.520227456844
B	3.65618758888	-2.89500251506	-2.79054166421
B	0.278404960124	1.4425442349	-1.131580195
B	3.60889084545	-1.55727874318	-1.88337503096
B	1.65353213702	2.04092117033	-0.526728282434
B	-0.548950636692	-2.31118799574	-3.55538910572
B	0.627386817071	-1.78012074077	-2.3711378012
B	2.20061960134	-2.17664777646	-2.72537414057
B	1.80702570702	0.58938160932	-1.24023871912
B	-0.984554702949	0.742925583278	-1.91028625288
B	0.409212417337	-0.254835704096	-1.54687645445
B	-0.628363517869	-0.758932739868	-2.7430086141

structure matching polymerization for boron cluster 20_4-16

B	0.171519023153	0.390847483806	-0.126711820426
B	0.606533307524	-1.06570216755	0.293896254533
B	0.515701210165	0.219156488912	-1.65633474507
B	0.950715494536	-1.23739316244	-1.23572667011
B	-0.712364830807	-0.101758320779	1.29936564921
B	-1.99840343992	3.88281591111	3.03881174868
B	0.795782585128	1.99015388632	3.07910001642
B	0.77688536958	3.49326739499	3.49626364142
B	-2.00968825808	2.26967741354	2.41320003573
B	-3.36560233182	3.18229885255	2.71606245552
B	-2.34897800016	-0.493984865524	0.992395020144
B	-0.505141436387	2.94542851213	2.65469405646
B	-3.80205861827	0.161593309489	1.6622191369
B	-3.83142889043	-1.21323472825	0.871020102279
B	-0.41888628074	1.18806873555	2.28322485018

B	-2.54444462255	-1.93366497576	0.252223407392
B	-0.529076137393	4.34673736618	3.56610650953
B	-1.07875665912	-1.44478989267	0.53077464236
B	-3.60594308469	1.68576626357	2.17728070243
B	-2.14421328551	0.65192521465	2.13766670533

structure matching polymerization for boron cluster 21_2-19

B	0.916872429043	1.22541246373	-0.0447919314526
B	0.546661114041	0.0673249331606	1.03272536702
B	-4.89815352433	-3.96590059527	-3.35727241386
B	-1.24551197401	-1.45205512911	-1.45934504203
B	-5.29939765377	-3.54900522902	-0.34285533407
B	-2.611543899	-2.29111874548	-1.76018017846
B	-4.39993012931	-2.8392564725	0.688134317214
B	0.0802066138078	-0.588470322627	-0.898689539213
B	-5.31054420703	-3.86751177958	-1.83921850218
B	-0.887655094992	-0.908025905018	0.279036059396
B	-2.56333829112	-1.93987335931	-0.14191518101
B	-3.44969869624	-3.03558223707	-2.96689020143
B	-1.23700642263	-2.10055580539	-4.75982049623
B	-3.27988121956	-2.05180580041	1.45515005547
B	0.157679910406	-0.840347676188	-2.39798797972
B	-2.58665787236	-2.88401872113	-4.69640484267
B	-0.307588991707	-1.36996271648	-3.80874596586
B	-1.81014028475	-2.11441122343	-3.17731392674
B	-1.9677311566	-1.31444930619	1.33940260239
B	-3.93332884123	-3.65494376392	-4.47718156749
B	-3.93177662409	-2.94009412213	-1.07988357297

structure matching polymerization for boron cluster 22_1-21

B	0.302812733489	-0.330061783585	-0.522823124678
B	-0.273184061116	-1.85848957583	1.03296661384
B	0.809318485872	0.818215622205	0.519393935307
B	0.988088653452	-0.770539181722	0.968068215846
B	-2.06181101473	0.520879579954	1.17029058531
B	2.27914969282	0.169700918758	1.25705183855
B	-0.973003561295	3.15077449699	1.05889265589
B	-1.5788495796	-2.73541564653	1.08399992313
B	0.338792345313	4.04080438121	1.16912907892
B	2.05182507556	1.89039691407	0.876471248753
B	-1.76162890379	-1.1082166231	1.21512030073
B	-4.8431678612	0.0511093873695	1.42459703447
B	3.4345341876	1.31790591339	1.53822016005
B	-2.31697779365	2.14772314742	1.16818383233

B	-4.61284844098	-1.50295404535	1.40955674991
B	-3.64524827239	1.1982561143	1.31419927276
B	-3.34074310688	-0.52153695581	1.28795537618
B	3.25704924428	2.8663120594	1.41991720558
B	-3.12411046248	-2.24222125551	1.26096326295
B	1.88860114829	3.66056202012	1.1942358006
B	0.499473804738	2.48307929913	0.55166602178
B	-0.763626076108	1.40918694678	0.816444770401

structure matching polymerization for boron cluster 22_6-16

B	0.629507860588	-1.06170828308	-1.94958117912
B	-0.175240005972	0.146817960057	-1.33142998385
B	1.76526847537	-1.82010291906	-1.21791728904
B	1.1041915611	-0.499380647206	-0.322804552202
B	-0.0235382435072	0.843477571643	0.0649602975653
B	1.12029386688	0.493022041294	1.06002210088
B	-1.52382827654	1.10344714725	-1.4154543345
B	0.529277462077	2.8764789303	1.82674155595
B	0.436221624599	2.97555956611	0.281231144351
B	-3.21000044128	-1.24055136215	0.116810900932
B	-1.74666772391	1.16275641661	1.91930349858
B	-0.669768565744	2.12137986841	1.0857278112
B	-1.81661698923	1.26273874712	0.182742123616
B	-0.404187401993	1.90569387698	2.76572378719
B	-2.35559559424	-0.221777720481	2.6160273766
B	-3.19815587023	-1.50919455321	1.68141699072
B	-2.85846144417	-1.60582396275	3.27316807971
B	-2.694525617	0.0469223240094	0.978501417028
B	-1.99438796224	-0.633469575778	4.11856445383
B	-2.44900333193	-0.0461094610193	-0.704758665655
B	-0.563093830224	2.15317172575	-0.710892020563
B	-1.25848041257	0.71589903665	3.54209872288

structure matching polymerization for boron cluster 23_1-22

B	0.278049009307	-0.79440132622	0.39124515904
B	-0.0902060215279	5.79003296359	-2.0527596203
B	-2.10296784268	3.73668374135	-1.50531965482
B	-1.64323903014	5.44982019118	-2.04832307873
B	0.299719694995	1.75188900173	-0.365301672161
B	-3.22594376739	5.03201473175	-2.02463731147
B	-1.99250745508	0.39318058408	-0.941006273266
B	1.12020492328	4.81161302172	-1.68021959387
B	-3.50637262511	0.674521656078	-0.988402181325
B	-3.71010587256	3.40603242334	-1.64826499683

B	0.672307692902	3.31572115106	-0.845337515305
B	2.76401927489	0.858968474942	-1.51353598662
B	-4.77527796325	4.59628169543	-2.04101143317
B	-0.360598181659	0.312952118092	-0.889083643475
B	3.22627210587	2.33742922498	-1.78050174736
B	1.24058108993	0.423084090431	-1.06626403334
B	1.79828169893	2.09883742522	-1.03748726119
B	-5.33631171018	3.18142712797	-1.72485333432
B	2.2745076232	3.63705359244	-1.68824177556
B	-4.516569931	1.85468932296	-1.3279474822
B	-2.60778704101	2.11870873343	-1.17496624326
B	-0.957590339235	2.65379166631	-0.933584822371
B	-0.505012918729	4.23361703756	-1.58731038441

structure matching polymerization for boron cluster 23_2-21

B	0.732429747279	0.587966763692	-1.2435388924
B	0.255701507854	0.491251884204	0.306507265802
B	-2.51639980228	-3.87341468039	2.6692585763
B	-0.763218973841	-3.27117984921	2.8548838318
B	-4.0697349271	-4.58926436984	3.02861095548
B	-1.43661563783	-1.67589015208	2.67469604482
B	0.262752050045	-1.79898978829	2.70401416306
B	-4.65223792048	-1.55315502916	1.66210545613
B	-2.66946889241	-5.51817349407	3.36476867731
B	-2.57757418697	0.750223781074	0.810081470372
B	-1.96621422649	-0.690043430763	1.39536616868
B	-1.19939447758	-4.95048900242	3.0912472668
B	-5.76283658625	-4.13985669057	2.57446186545
B	-0.32407692102	-0.498304412856	1.9071784944
B	-3.64838404962	-0.35781789343	1.19974523956
B	-5.45949517048	-5.54594115857	3.21550468396
B	-5.65996676561	-2.70120567621	1.96581103578
B	-3.97464413716	-3.07241392139	2.18436241443
B	-1.03582560797	0.67803652657	1.1275217477
B	-4.10565184276	-6.17919601914	3.55210138695
B	-3.0713095425	-1.60309685868	2.31223915659
B	0.940753054945	-3.15215174843	3.1425616894
B	0.321490202389	-4.5452762552	3.17169040232

structure matching polymerization for boron cluster 24_1-23

B	-0.739260473711	-0.249915993221	0.549303054077
B	1.10508900241	-0.565163432817	-1.61206772176
B	1.71349132761	0.95103881779	0.739282898212
B	1.55674163663	-0.455979500624	-3.30552959894

B	3.60289422334	0.847133024225	-1.78857223909
B	3.15803990232	1.39506049203	0.400506578644
B	4.70137074816	2.04888754314	-4.9527567701
B	-0.459764622879	-0.281752158163	-1.26314872319
B	6.57217326743	2.89836941711	-2.09487284278
B	4.87527999479	1.98472837947	-1.87730806081
B	0.556817400985	0.256839709349	-0.154916714983
B	1.81330302336	0.49025719235	-4.75659470801
B	4.62421937595	1.89097782586	-0.126410534793
B	5.5469269248	2.3591011638	-3.43971347351
B	0.363149123485	-0.00433518556374	-4.34244124332
B	3.29022410746	1.22164998177	-4.86263757232
B	3.04731468836	0.310622713872	-3.44410744743
B	5.95453580845	2.50640594223	-0.666684244937
B	-0.171254850282	-0.299280130833	-2.8386041131
B	4.08537773473	1.59083997394	-3.33409700481
B	6.10398669732	2.86342469559	-4.8982751471
B	6.94054645699	3.2054485355	-3.62640239178
B	2.70446014251	-0.530819707622	-2.07133358876
B	2.33293817034	0.339182501509	-0.681841776669

structure matching polymerization for boron cluster 24_2-22

B	0.339381155943	-0.35684569806	0.582737205978
B	1.09496390037	1.03618927026	0.225225013038
B	-1.30446858572	-0.635491752725	-1.34709170079
B	-1.7233153236	-0.145263347964	-2.89539070372
B	-6.60547523564	-3.20227626319	-2.69274106512
B	-3.64169842755	-0.0449912648952	-4.97675999192
B	-7.27311485707	-2.69362334709	-4.24035210862
B	-2.317738267	-1.9078295365	-0.675597281112
B	-6.23143916127	-3.84401735718	-1.09232299417
B	-1.18136956007	-1.10549970991	0.194136849601
B	-3.92191889506	-2.16370985123	-3.0487724153
B	-6.34374267918	-1.6786563201	-5.06217853645
B	-2.54796041983	-1.55672159024	-2.27265090828
B	-5.10174713173	-2.90751445361	-2.103094485
B	-2.34550593107	0.454497555783	-4.28006701095
B	-2.9622483878	-0.984475705294	-3.75091105298
B	-3.40955457775	-2.92727908401	0.311558788788
B	-2.12276118873	-2.15124899562	0.93616713344
B	-3.62845855133	-2.61589374239	-1.43692834931
B	-5.0711565947	-0.803441671701	-5.15139791777
B	-4.78512799551	-3.40629226042	-0.429578621352
B	-5.50701216842	-2.24563831919	-3.71273027401

B	-8.08463632304	-3.66873203684	-3.25151946561
B	-7.62987707169	-4.16378731865	-1.82541990747

structure matching polymerization for boron cluster 24_3-21

B	-0.723660442867	-0.267765225308	-0.436064272388
B	0.649246103588	0.477381075324	-0.445002550404
B	0.612460451982	-1.08247399496	-0.354321989975
B	0.126557663281	-0.756959519087	2.20645220428
B	-0.17756901743	1.85763895355	0.913509372377
B	0.725358549333	0.527231810319	1.32841641288
B	-2.00951263553	1.11187461009	3.11425422455
B	1.57927313513	1.77382310688	0.735760013597
B	-2.085898088	3.79111486663	2.14983971077
B	-0.58492155018	-1.8568649162	3.07844510821
B	-1.29090018952	4.94763366905	1.404483175
B	0.629010226687	3.23526280682	0.391511290328
B	-1.20525219303	-0.33685824837	3.13454430526
B	-3.9172374491	0.118795691339	4.95699186409
B	2.25258702794	3.18308446673	0.194488836766
B	-2.75548204668	2.57991510105	3.10324191263
B	-3.22402626228	-1.29110717379	4.96129997042
B	-3.41165576427	1.43224680565	4.07247055263
B	-2.61028914611	-0.119501803775	4.04103588443
B	1.53429958113	4.56394622572	0.0518633361072
B	-1.87837743419	-1.69188318301	4.05933288514
B	0.0724833379539	4.94340952568	0.57485106374
B	-0.961696684996	3.35829455867	0.958150524957
B	-1.46369427458	2.14012168215	1.99874032988

structure matching polymerization for boron cluster 24_4-20

B	-1.10770172014	0.141702504505	0.574478952681
B	-0.629068014528	1.58210511363	0.142097501331
B	0.213667838203	-0.601511894511	0.136050870688
B	0.692301543816	0.838890714611	-0.296330580661
B	1.25873031706	-3.6525834475	0.513336479127
B	2.32429883944	-2.90885096523	1.64387187497
B	0.498469317335	-4.51139442193	-0.701751965502
B	1.31787923552	-1.99465730517	0.310633128467
B	2.5434961701	-1.29440443647	1.41701573389
B	0.15674592233	-1.64103453293	-3.20225312158
B	1.33307474774	-5.39960896901	0.576072545552
B	1.68939962914	0.369463256618	-1.56001290301
B	1.93670412279	-0.535220453503	-0.0425161762
B	2.13620696785	-4.48474201606	1.63674761152

B	-0.278230102039	-3.70441774052	-1.97528845447
B	2.97554783906	0.206703091293	0.992514207323
B	0.82592852347	-0.354366616217	-2.66527880762
B	-0.0655279371009	-5.50111421918	-1.98533392911
B	-0.393090621692	-3.11674557373	-3.55306522273
B	0.367634516208	-2.84128804786	-0.699266283951
B	2.60962350635	0.930961937628	-0.350690058027
B	0.562603331927	-6.16205026227	-0.653618037522
B	0.943853050093	-1.33455428817	-1.29581852383
B	-0.473919439101	-4.639283143	-3.31671479703

structure matching polymerization for boron cluster 25_1-24

B	-0.259825705383	-0.358260729652	-0.607826677954
B	1.43817356602	-0.560495635475	1.62026277958
B	0.516481952398	-2.015686882	1.34988767603
B	2.29912754277	0.750423776341	2.1033320642
B	-0.130016706092	-0.312421457008	1.0680698818
B	-1.01445313369	-1.83502159541	0.786970429349
B	-0.663673135844	3.1870014765	1.56641932238
B	2.90627138439	-0.867459396138	2.46643055874
B	-2.70174376179	1.23013065406	0.599074816009
B	-1.70786312102	-0.229502060912	0.646744957947
B	1.97209830408	-2.07387781225	2.01465444594
B	1.66037472707	2.29108582822	1.910584914
B	-2.55777110202	-1.60628606519	0.374091589764
B	-1.96526777708	2.58032011487	1.02079868099
B	3.14029735849	2.01076595009	2.7677213001
B	0.734898706926	3.82243224379	2.20239342193
B	0.797152029248	1.01570918643	1.36356440981
B	-3.30448551279	-0.236594541153	0.294720281813
B	3.74175008053	0.444468721848	3.10978314269
B	-0.870965271733	1.28810470999	1.07056227596
B	3.01222204886	4.62042267484	3.76655282618
B	3.87460556417	3.2409322021	3.85470622406
B	4.37830790456	1.72980973026	3.82292234203
B	2.31896663607	3.49658214345	2.76564192813
B	1.63126049528	4.92466192434	3.0851394386

structure matching polymerization for boron cluster 25_2-23

B	0.465940639918	-0.0815689935243	-0.846967208085
B	-1.04326512532	-0.458713446096	-0.37864392786
B	0.874013301069	3.20670423293	5.32538775689
B	2.34233575659	-0.57925311911	1.41224774682
B	-0.398298584669	4.19851687037	5.73453776847

B	2.56762652171	1.39178849309	3.79746737889
B	3.82388733084	3.4886010473	5.14575706778
B	4.03855899397	2.26203948987	4.1341230256
B	0.761700053887	-0.717256043376	0.714760034038
B	3.98106479517	0.0165099025969	1.73493238497
B	-1.13388102167	2.1193236616	3.42217695965
B	4.06361083245	1.00611620159	3.05400219801
B	-1.35298129573	1.2668490078	2.13010025254
B	1.02197717483	4.69711566067	6.09064394958
B	0.968774492428	-0.379831496688	2.41076041804
B	1.28149701668	0.301009347274	3.92783866677
B	-0.0190073189236	0.886160605314	3.03581372064
B	0.843405875579	1.86151053521	4.3047851221
B	2.6623304428	0.0458794412751	2.92151235297
B	2.40244704149	2.83275505698	4.57415949649
B	-0.778062370688	3.02775394914	4.721928945
B	2.12650590813	-1.07979867597	-0.121363783687
B	3.58628153185	-0.740918834054	0.355653323444
B	-0.378900319748	0.211875886088	1.41373242461
B	2.48701097764	4.15326480915	5.69975999913

structure matching polymerization for boron cluster 26_1-25

B	0.968334895116	-0.264537801406	2.31121353122
B	0.726882934575	1.27931792286	1.83953542139
B	-0.656281711596	-1.65465145798	-3.26102496148
B	-0.174584421838	3.20665661607	-0.0629375504284
B	-1.02392851589	-0.0478101072119	-3.61092465948
B	1.07295730432	-1.52499684656	1.02657023998
B	-0.251856337192	-3.07546075533	-2.65004390589
B	1.30529058216	-1.75905924927	2.69286349938
B	-0.743044553309	0.449717366608	-0.671091670569
B	-1.31906857258	1.51099870456	-3.80272426309
B	0.344201102722	0.0470614913791	0.714438471101
B	0.512985787393	-1.74767454312	-2.01953328917
B	0.484571688072	2.87496390776	1.55034848781
B	-0.0487525441329	1.59841681624	0.394140845704
B	1.1688261602	-3.25381720161	0.287351441229
B	1.41690035001	-3.04053995983	1.83369547185
B	1.25451373093	-1.85941462848	-0.620477297667
B	-0.926994125995	3.77993137193	-1.52673971776
B	0.589706931235	-3.27154300711	-1.26303300139
B	-0.713471609313	1.04053450792	-2.33216383746
B	-1.16945154894	2.68660716845	-2.73761666842
B	-0.926957120147	2.09888423441	-1.05838011206

B	-0.487953115984	4.78729868234	-0.335890805555
B	0.160343279993	4.36237802781	1.04908500521
B	-0.759598112208	-0.574889711381	-1.95616887683
B	-0.171400324625	-1.63138165573	3.03085838203

structure matching polymerization for boron cluster 26_2-24

B	-0.0786581342709	0.268524348437	-1.78313860087
B	0.858283466386	1.62556279586	-1.51444064628
B	-0.889343560669	-1.15590076801	-2.20985503221
B	0.461885746592	0.569988376777	-0.221727930386
B	1.43889247215	2.12840089612	-0.0369009867224
B	-0.359822531854	-2.06429655642	2.07936209349
B	-0.519451310661	0.0203957213374	-3.51967422078
B	1.38306501388	0.736436532198	2.92214865351
B	0.95135642697	0.532646312954	1.33143084938
B	0.331315577827	1.28894836893	-3.01165019401
B	-1.27302136584	-2.43728147647	-1.09671642116
B	2.18717953531	3.22408478219	0.890900516072
B	0.537083488208	-0.661378814909	2.45165107891
B	-1.64716344216	-2.50058818537	-2.68698534873
B	-0.807168464802	-2.20891890623	0.485988245449
B	-0.479602841686	-0.956845682555	-0.62794216765
B	2.51204181697	3.21530311598	2.42046075304
B	-1.31696656573	-1.38468454401	-3.75714175149
B	0.164017637057	-0.818960537667	0.858664154841
B	0.118138931436	-1.77539914759	3.58648828753
B	0.961682230991	-0.492140326354	4.14140244689
B	1.76141988043	0.877755483421	4.51281838896
B	2.21760254797	2.10485007432	3.577808314
B	1.79469569076	1.90422633211	1.74122393239
B	-2.79071279671	-0.949250915212	-3.69833890025
B	-3.05614337434	-0.208341900238	-2.27711860954

structure matching polymerization for boron cluster 27_1-26

B	-0.77450856632	0.502861454669	0.50332646742
B	5.03674673561	-1.13463758277	-3.07533807766
B	4.27176533352	1.36929475521	-2.01958775478
B	6.2057214929	-2.1055463661	-3.7303961438
B	3.78898549221	-1.88380151816	-2.28213790112
B	3.007086775	0.764627432933	-1.22249910779
B	3.21679815079	-5.24497148218	-2.80149877155
B	6.41635510481	-0.3537253927	-3.76256135969
B	1.04943873147	-3.24504267083	-1.18319531533
B	2.59076888434	-2.66997992213	-1.39832142681

B	5.40212902063	0.593910565107	-2.85771731272
B	5.99474945306	-3.86643568947	-4.07384006321
B	1.56089006253	0.042870534999	-0.651092646221
B	2.31357059104	-4.31173945467	-1.67551281792
B	7.13542053421	-2.94967738345	-4.76861319238
B	4.66676380438	-4.5539486616	-3.35363026401
B	4.87512518899	-2.88332856708	-3.11215585467
B	0.178122109284	-0.687226252727	-0.252281794535
B	7.32596518913	-1.37818098497	-4.66010736722
B	3.73728196957	-3.66917486506	-2.23708166715
B	1.75362801599	-5.71891325374	-2.3315395662
B	0.628630862334	-4.91089238517	-1.48974648583
B	-0.384734084675	-3.86899044106	-0.757463168177
B	-0.179765233029	-2.28275975941	-0.421526249766
B	1.44221745079	-1.65375206595	-0.636170400438
B	4.20347805653	-0.268959200403	-1.88550260978
B	2.83045647556	-0.957509504864	-1.24244873008

structure matching polymerization for boron cluster 27_2-25

B	0.586722145491	0.676012026793	0.151390524316
B	0.360169203097	-0.55016271735	1.19275306246
B	-2.02921640209	0.716195262289	-2.6063777776
B	-1.32102922554	-0.153460925328	-3.97029038024
B	-7.11105424169	-0.162424309684	-5.30873704183
B	-1.72884586008	-2.57715286304	-5.74522817677
B	-6.45264516127	-1.31828979904	-6.15577145388
B	-3.76147020365	1.16505964434	-2.92511544059
B	-6.33493022297	0.803435708762	-4.26114947764
B	-3.09377022742	1.77288738923	-1.44428927317
B	-3.86580535466	-0.653736471604	-5.23357595456
B	-4.884394428	-1.72371695154	-6.20686190417
B	-2.88458275706	0.319564004689	-4.10023673416
B	-5.49539593019	-0.362495623332	-5.23761410409
B	0.11580137992	-0.802367927432	-3.49604079658
B	-0.815854609509	-1.63778795779	-4.62075814783
B	-5.4655913236	1.5245749994	-3.06271832642
B	-4.61028986135	2.07669018481	-1.82474800188
B	-4.54695068038	0.661516190931	-4.31851292213
B	-3.27354678708	-2.01080591038	-6.04554809566
B	-2.31540002831	-1.0875592663	-4.99353025695
B	0.644082186145	-2.4182304215	-4.10563092914
B	-0.284036299252	-3.06449744065	-5.2680057336
B	-0.306337280823	0.545671931356	-1.43481092321
B	-1.57292934679	1.37278468041	-1.14252028373

B	1.32091659265	-1.6957158776	-2.81951979005
B	0.814579925695	-0.495163828749	-1.98741791487

structure matching polymerization for boron cluster 28_1-27

B	0.735390250609	-0.0318416789437	0.378301954664
B	-2.59429680943	1.65119985716	1.45816242487
B	-2.09011799252	2.66540722252	0.267018163718
B	0.48235365129	-2.67225688604	-1.05643170066
B	-0.302500173451	3.0997215424	-1.9407943944
B	1.13690230378	-1.59107345925	-2.14771525601
B	-2.42082939786	-0.0514200371428	1.17379857972
B	0.0842557266771	-3.6733390831	0.170451573698
B	-2.55187657563	-0.963172602997	2.65106102638
B	-0.995442734852	0.385453618216	-1.37961755052
B	1.77540649142	-0.481453062931	-3.09239601767
B	-1.94976398453	0.971204503311	-0.0502902714729
B	-0.69058987745	-2.1195062566	0.0197868558033
B	-1.30947044767	3.79067595091	-0.653373469219
B	-1.20252434585	2.03651610218	-1.02819672503
B	-1.32581028407	-3.99382041345	2.64032465516
B	-2.09904769546	-2.54959550004	2.61680787445
B	-1.86605743033	-1.59625342157	1.18806302179
B	0.87846232771	2.64130381865	-3.13945631188
B	-1.16475330663	-3.10230662078	1.27757712559
B	0.483889866699	-0.0335322286169	-2.1697239841
B	1.36309756323	1.06936572518	-3.1970941681
B	-0.173945599587	1.48963805118	-2.34697126564
B	0.555491266981	4.20192476921	-2.79183797416
B	-0.416888599048	4.70435115849	-1.63504658179
B	-0.3278909043	-1.16030944183	-1.22504774371
B	-2.81472731629	0.626032683118	2.65303851032
B	-0.318862489285	-4.48503065669	1.52375082691

structure matching polymerization for boron cluster 28_2-26

B	-0.0816183610797	-1.35086002538	0.441105799175
B	-0.36871905123	0.247975901168	0.417366624673
B	2.98549864645	3.46805549112	-5.92144659468
B	2.54742023374	5.17974525907	-3.6914252023
B	2.78329422131	4.98223981268	-5.47124937556
B	2.26531030006	2.74274539636	-1.46312636748
B	2.46443444326	6.49381889763	-4.91898359822
B	-0.0788594492729	4.2460080674	-0.265783766836
B	2.60707900098	2.15611294413	-5.12121352731
B	0.610863155741	5.65357063413	-0.876167837739

B	1.79880375412	6.64309222036	-3.31500483922
B	2.10084298184	2.23062130177	-3.32819984265
B	0.28915336384	0.135318757646	-1.41908104589
B	1.79872218917	7.86979248505	-4.38951801632
B	-0.742111469177	2.832204282	0.0628750324585
B	1.24798506093	0.692323445711	-2.86357359464
B	-0.26862360218	1.42006509289	-0.549149631787
B	1.3841392388	1.36999178963	-1.26108491758
B	0.980050594499	8.03128430724	-3.05600793485
B	1.96523614901	0.834025434212	-4.41750307482
B	0.774599047429	6.92212484451	-1.88775133317
B	1.55031344888	5.39494145023	-2.25330425264
B	2.25651151163	3.87114886619	-2.70068807803
B	2.39651221411	3.64418778112	-4.37468741641
B	1.54016800723	4.20140667923	-1.07325031238
B	0.674101284128	2.81490544857	-0.751770995794
B	1.28119461741	-0.534498711711	-3.99097097993
B	0.537561172374	-0.844337922576	-2.66465402187

structure matching polymerization for boron cluster 28_3-25

B	-0.606363099916	0.159390453176	-1.4191588093
B	0.56798385478	-0.205280893666	-0.455769310582
B	-0.832812319773	0.163064877067	0.131440582922
B	1.99900500281	0.896616498354	1.31412977471
B	1.29587381082	-0.615887215616	1.09324017801
B	-0.112902987464	1.06602615516	6.58525998532
B	0.0685535745052	-3.06105151449	2.3056369516
B	-0.631379044523	-0.424401176398	6.44137226468
B	1.60800702921	1.8112359746	2.66994021156
B	0.672371193234	1.92570437482	5.44120334142
B	2.79324495483	2.45868630864	1.58734201043
B	0.262259144983	-0.575764656135	3.76782143042
B	-0.51290945265	-1.37757289	5.11908499543
B	0.934998582917	0.273644275135	2.46236652694
B	-0.0128987631565	0.323117613608	5.14635385714
B	2.78437293405	-0.75586387132	-1.43641095528
B	0.967197316788	-2.2475836872	1.00213399192
B	1.58521275932	2.61247536724	4.24771320914
B	2.53558095193	3.13213254909	3.02604048871
B	0.80869864322	1.06363826649	3.92484702907
B	-0.238216549522	-2.20099604477	3.70205702364
B	0.420224627354	-1.41937031658	2.33202599615
B	2.04924829873	-2.14602572761	-1.05930745845
B	1.2645744816	-3.28750045817	-0.302438792791

B	3.32866416018	0.677655322184	-1.15420139638
B	3.03268452599	1.61213181653	0.145771324715
B	0.472874421027	-3.83563385265	0.933106565784
B	2.19365644215	0.117585052946	-0.119611902535

structure matching polymerization for boron cluster 28_5-23

B	-0.325542336469	0.137540415418	-1.97987314393
B	-0.0302781139515	-0.282366850723	-0.450573696603
B	1.51486022771	0.336330552955	0.049236764415
B	0.59646268074	-0.505096441624	1.01888225641
B	1.06061263753	0.652587689159	-1.42761568396
B	-2.70759442235	-0.0797456849874	6.12808154193
B	-1.47936955325	0.121986468067	5.02225985485
B	-5.21419747713	-0.870861608489	0.633860440146
B	0.536469808018	1.31711482006	2.73867180328
B	-4.00418831837	-0.47455982419	-0.381363982184
B	-4.22672291294	-0.631978627201	5.41746027468
B	-6.29807137409	-1.29366522406	1.77136025162
B	-4.02916232636	-0.324078984956	7.02047410727
B	-3.12374140775	-1.12469255264	2.786876262
B	-2.49884535437	-0.0649432252532	-0.0161338167246
B	-2.87589819185	-0.68382464934	4.46642947362
B	-4.76591188666	-1.04473799222	2.32588845341
B	-0.376816575261	0.733479291159	3.94581156312
B	-1.70868745708	-0.271941080023	3.38908103214
B	-5.78611291029	-1.269506228	4.98717733577
B	-5.41646321077	-0.900507182593	6.52405492104
B	-4.3730272724	-1.39415408953	3.93029561562
B	0.27986350658	1.15276003007	1.18670786751
B	-6.10888639065	-1.35841422592	3.3650302712
B	-3.58800786778	-0.567425872528	1.21825893245
B	-1.01951937155	0.443608860606	0.521391321665
B	-1.974359176	-0.536023918815	1.67093598338
B	-0.802104553987	0.507773398356	2.24368907194

structure matching polymerization for boron cluster 29_1-28

B	-0.628006189377	0.135073110594	0.367319680751
B	-1.08052803909	2.69487632415	1.67971089605
B	-1.12267944248	-1.32235173638	-0.199939041377
B	1.09035732716	0.474796670699	0.164804203568
B	-0.308458748454	4.05996473582	2.12677529933
B	1.59979654326	-2.10761427638	-1.0862285274
B	-2.24822050531	-0.282898028069	0.585368282841
B	3.84031721416	-0.227888071414	-0.783384414922

B	1.69048103126	1.94521662874	0.655482419699
B	-1.66155404649	1.22197835153	1.14003089814
B	-0.556937407569	-4.03248572734	-1.41810392171
B	3.3903824372	2.37051591778	0.437660303595
B	2.1674146894	-0.620696463272	-0.584167709315
B	-1.61342513671	-2.82244629113	-0.717435421128
B	1.06479937868	-3.6428894626	-1.62967506382
B	0.520401200528	-0.984871632641	-0.380107994311
B	2.73409962708	0.863653305203	-0.0832939526163
B	-2.82118204516	-1.75127129651	0.0436167007367
B	-0.0309022428627	-2.45367686068	-0.914820454456
B	-3.17102599611	-3.2329406207	-0.523453915095
B	-2.16173461559	-4.2706232415	-1.19473018404
B	0.00409906466611	1.54960243107	0.886377035227
B	0.65883705671	2.98552240574	1.39609081042
B	2.33960911043	3.45237109408	1.1906294217
B	1.22707767742	4.41748850571	1.91058191966
B	4.31130819513	1.23611938951	-0.283876075331
B	2.62968359199	-3.19026732306	-1.73562533028
B	3.25787589806	-1.76486185147	-1.29783873284
B	-3.18212062561	1.11541389556	0.052236007146

structure matching polymerization for boron cluster 30_2-28

B	1.02350221181	-1.33308899068	-1.24397130276
B	2.75444940365	-1.10582158904	-1.2060187543
B	-0.571279684109	-1.82107444224	-1.2420122271
B	1.67373217203	0.215046542912	-1.10332630731
B	3.21568649047	0.0825194094749	-0.165639433
B	-3.33713813689	0.923778596742	1.2249895698
B	0.650205794023	-2.86068654886	-1.95544358439
B	-0.449600121166	2.58117067923	1.61334362413
B	-0.666306626924	1.71566255911	0.110100112699
B	2.17937784208	-2.40572392731	-1.88879545882
B	-3.57375427188	-1.77311431434	-0.568764139502
B	3.47048338623	1.13998324918	1.0155258865
B	-1.94679674056	1.88713421	1.15196384333
B	-2.12774382184	-2.44992301084	-1.29423930784
B	-3.38671987861	-0.381833529928	0.22587723654
B	-1.97541173946	-0.944187366167	-0.547807059489
B	2.39776166603	2.11976463257	1.64305466221
B	-0.876875154951	-3.39846930877	-1.96019822884
B	-1.93513949871	0.50760344104	0.172203793353
B	-3.13398370215	2.07522530179	2.30938854275
B	-1.76709223268	2.80984804464	2.74969499761

B	-0.268364069521	3.26014287114	3.10537948135
B	1.08228544554	2.88461689461	2.32426991146
B	2.15043023594	1.40064020237	0.0615776678957
B	-2.40456309968	-3.93519033901	-1.95966657209
B	-3.61805707397	-3.17947685391	-1.34737819512
B	0.66533748272	1.43112831223	-0.775523066672
B	0.867890193234	2.19695553341	0.703999926804
B	5.34545229121	-1.23211137629	-1.23848841391
B	4.77119756132	-0.445164156562	0.0615932194103

structure matching polymerization for boron cluster 31_1-30

B	-0.256260958246	0.514014134221	-0.620020967865
B	-0.062208003259	-1.15851089771	-0.894863330808
B	2.59017848575	-0.363055994728	4.34733844783
B	1.1360552709	-3.85900159354	-0.165090806116
B	2.67281234934	-1.90959770636	4.03793928197
B	0.601665033898	1.37723376344	0.685163898304
B	1.96472735154	0.770563618505	3.34411997614
B	0.327109456812	3.09333764293	-0.215096684948
B	1.39189027491	-1.50544663257	1.51670249663
B	2.18554140353	-2.66533547858	2.70807059443
B	0.5775988093	-0.419815092892	0.460454123
B	2.01551838967	-0.907493875387	2.92758144432
B	-0.293549844587	-1.73756214617	-2.51518374702
B	0.233566178769	-2.80703717349	-1.22184835296
B	1.35911635862	1.83146363474	2.24358182147
B	0.851200106992	2.94511086672	1.21825226286
B	1.29203082033	0.172736740332	1.85397866414
B	1.63154721321	-3.23513770732	1.28108107363
B	0.910941904965	-2.17331153382	0.115888441293
B	0.0483004396858	-3.34361049062	-2.79325649094
B	0.749111117516	-4.49260743116	-1.62822735513
B	-0.575803800812	2.49703545221	-3.17423312133
B	-0.235226321182	3.05739696357	-1.75216952885
B	-0.368772189105	-2.32703306781	-4.17348095878
B	-0.513373086522	-0.141030886478	-2.24600378718
B	0.476444781191	-4.88073820562	-3.17023731486
B	0.00666467468616	-3.9067842937	-4.32376966994
B	-0.633505334474	-0.725978093381	-3.84481120026
B	-0.760039417907	0.926003534517	-3.54894279861
B	-0.716972269205	1.441861795	-1.90779921507
B	-1.0795366411	1.3885519711	0.664611427051

structure matching polymerization for boron cluster 32_1-31

B	0.537190379551	-0.423101161617	1.32569334288
B	2.70636675148	-1.78626113959	2.61984966554
B	-0.827665112921	0.54673865841	1.69951122316
B	0.894882427474	-1.004321588	-0.186467131246
B	3.26561948885	-2.5784159304	1.43753862343
B	0.0267573869784	-0.722605715403	-3.06661213566
B	0.335036704855	0.319304684557	2.87858925152
B	2.19931538846	-2.46639774763	-2.58459821416
B	2.14153660618	-2.07997968741	-0.630624931978
B	1.52161200197	-0.757718104084	2.73812827568
B	-1.89969550921	1.01256201527	0.540942251697
B	3.48933094208	-3.09639515927	-0.0429834801183
B	1.15051455649	-1.73188299265	-3.46872445062
B	-2.91545801505	2.33706599363	0.847901039519
B	-2.78525172321	1.67475778265	-0.765914964961
B	-1.43476719951	0.740062275949	-1.05365881781
B	3.19311443928	-3.11175426602	-1.5215238627
B	-1.65507998308	2.05391765407	1.8778438426
B	1.01444408894	-1.40239524747	-1.81954811914
B	-3.5035791191	2.52253462602	-2.10980878017
B	-0.737482004576	1.51008871054	3.18944475738
B	-1.78850904865	2.6877703789	3.3980516842
B	-2.80072596545	3.29072646562	2.32063938821
B	1.87896379603	-1.46163064532	1.15433860998
B	-3.59143257594	3.10416264028	-0.453598898569
B	-3.77116405615	3.87126111603	1.09551335415
B	-2.36093459706	1.37457811833	-2.37742457502
B	-0.156249724784	-0.277656471993	-1.3763633157
B	-1.17614284034	0.30067370826	-2.65785155045
B	-4.42932669967	3.78830310084	-1.67946605148
B	-4.55023221999	4.40626458108	-0.21796611556
B	4.90780941429	-3.87023060348	-0.340123262779

structure matching polymerization for boron cluster 33_2-31

B	-3.29689371358	-2.60051721643	-0.841044075232
B	-3.36552954398	-1.70482689259	-2.2195969142
B	1.53073262405	0.729967211341	0.85675512426
B	-2.61396643529	0.719844583347	-3.52814313873
B	1.00124814584	1.75177765585	-0.366249525783
B	-2.07415376056	-2.17894954841	0.291041977157
B	1.07314777645	0.0523226793085	2.44744592179
B	-2.28660163212	-2.90935132941	1.82682861747
B	-0.729477163597	-0.341230939032	-1.59350916896
B	0.597745325492	2.7357533787	-1.55047996912

B	-2.03437998458	-1.42462251111	-1.18225785444
B	0.228581765363	-0.559534685547	1.13952646685
B	-3.74380515261	-0.652979211574	-3.42458247543
B	-2.17282821853	-0.535444745843	-2.52082083483
B	-0.160131159898	-2.15400859917	4.20951714073
B	-1.24952574051	-2.41388756362	3.017630351
B	-0.973595251638	-1.75580121058	1.44908371016
B	-1.70495202497	2.19338876482	-3.73742426768
B	-0.111237968784	-1.15874604031	2.68490144684
B	-0.207735917171	1.28259990589	-1.42448807878
B	-0.503141246543	2.52313225961	-2.67266947639
B	-1.13628302086	0.841915863416	-2.74772251096
B	-3.04050490465	1.85143486204	-4.6228348228
B	-3.95189228272	0.573602943295	-4.45848789998
B	0.353197553082	0.0990844970126	-0.379047746625
B	-3.26555301319	-3.28389355006	0.61686882023
B	0.953750275963	-0.805460026228	3.92510035896
B	1.07437233267	-1.84152388031	5.19746163336
B	2.27176314024	-0.869737233168	4.8957189913
B	2.64542394261	0.530423097505	2.02196684253
B	2.5055384865	-0.0069723341222	3.53577156065
B	2.81091089608	1.51254022777	-0.888725054716
B	3.11460285499	1.23612478033	0.683099480413

structure matching polymerization for boron cluster 34_1-33

B	-1.22243642565	1.77766312605	1.27437310293
B	-2.03415213841	4.50818925272	0.976014805172
B	-1.71391723557	0.20135097708	0.986045557167
B	0.386895775584	2.34616145487	1.47663083413
B	-0.580711230951	5.1171254127	0.695326484763
B	2.58501823024	-1.10911478406	-0.464026245138
B	-2.84087366864	1.41797060288	1.36953729583
B	3.79305096846	1.83112326153	-0.987514673764
B	1.85725722639	2.80839559015	0.743320226438
B	-2.47563646507	3.00986214648	1.25644391563
B	-0.657987585062	-1.1558813326	0.575906575642
B	0.922941493733	5.44726084445	0.214359827926
B	3.35142724222	0.315795357531	-0.664576636381
B	-1.44786428824	-2.64335001986	0.252874987917
B	0.0888499225164	-2.42759107542	-0.32628720238
B	1.02451613146	-1.13181817473	0.23266503916
B	3.13737823055	3.15756492078	-0.436836506869
B	-2.32047220426	-1.35631985398	0.990054039134
B	2.14205653339	0.0490805312627	0.646775405478

B	0.84695962503	-3.77109411114	-0.948453615867
B	-3.42158067877	-0.0847628444233	1.27463009623
B	-4.11942208627	-1.53229303779	1.12773354403
B	-3.07141517102	-2.79469582929	0.526123415856
B	0.690281863248	3.95657278887	0.872339441215
B	-0.686081552372	-4.00587077278	-0.585511621754
B	-2.26095442815	-4.15151391206	-0.203043113786
B	1.72584853407	-2.47614462117	-0.732458845502
B	-0.840109255687	3.47077961597	1.45930273143
B	2.1238696113	4.40977626754	0.0317737248851
B	2.89794466334	1.61341434043	0.382440144375
B	1.64028593823	1.32685477271	1.49078565833
B	-3.82917952361	-4.19972886813	0.178335018061
B	-4.67331804901	-3.00112858465	0.784119347186
B	0.804868425764	-0.978907564191	-1.29663926407

structure matching polymerization for boron cluster 34_2-32

B	0.74809437508	1.3216497853	3.04416480065
B	0.892353189888	3.05555383167	2.94433679828
B	0.112734455579	-0.207603565793	3.11527017705
B	1.33799019566	1.94191643698	1.5865355861
B	1.08788643708	3.73238917845	1.48222681856
B	-0.932802457468	-2.21076706026	-2.31830791984
B	0.0155303870672	0.837710166846	4.53348559679
B	0.157836504677	0.973850831049	-2.5798634368
B	0.564190552246	0.113062243623	-1.16665769151
B	0.424255903597	2.35581783509	4.30306886527
B	-0.30428590171	-2.83320426029	2.00440039545
B	0.920250775065	4.34065792677	0.0128247803296
B	-0.0638207488753	-0.70987357622	-2.49686521523
B	-0.235713477174	-1.80536921112	3.3644961218
B	-0.84044907928	-2.93864664281	-0.837529513145
B	-0.265550463658	-2.08060219941	0.48702458754
B	0.59550134209	3.55185359047	-1.33133922086
B	-0.478005794518	-0.760555149301	4.70398611045
B	-0.159107518353	-1.41026880702	-0.960663585808
B	-1.07323611429	-1.34179673779	-3.64440470591
B	-0.739206836128	0.213573041108	-3.89614403006
B	-0.466647407294	1.80255826714	-3.86662582863
B	0.11167632029	2.68960996872	-2.68951614913
B	1.03712455407	2.68755877904	0.0953840463864
B	-1.05094076545	-2.23794575261	4.73913798384
B	-1.19801691657	-3.28146861981	3.5204489042
B	1.05246228552	0.974900517176	0.19781239422

B	0.522354518695	1.79837461003	-1.20091832353
B	0.383967292381	-1.30223838383	1.85632167826
B	0.954887196042	0.277011813669	1.69922206363
B	-1.08043057546	-3.62293044368	0.644068161769
B	-1.39784532145	-4.07523647575	2.1363500586
B	0.293184211596	0.140827659462	-5.50923328208
B	-0.643131520633	-1.16326760957	-5.26040592505

structure matching polymerization for boron cluster 35_1-34

B	1.1343572169	-2.54119521392	-2.73248159477
B	0.0639275227781	-3.78223235625	-3.22054476788
B	2.06526791443	-1.17303727463	-2.42271950583
B	0.0844245124159	-3.13956561611	-1.57067182841
B	-1.17734337709	-4.21754686333	-2.18939891041
B	-0.506570151859	1.76006861814	1.44458587952
B	1.97293642434	-1.83101391921	-4.05917920656
B	-2.28161332902	-1.09439478393	1.46074785837
B	-0.626002871516	-1.15068153501	1.04833908168
B	1.06411317641	-3.13412037103	-4.26770823358
B	2.06778622825	1.36001278382	-0.942431665724
B	-2.4973021672	-4.3560767197	-1.32017168479
B	-1.29315699792	0.258161991669	1.75894497642
B	2.41438476106	0.469299968197	-2.344529599
B	1.16749056803	2.31059946871	0.15981379949
B	1.48849598314	0.598772637462	0.375499372508
B	-2.91152743918	-3.49428299274	-0.0425976288212
B	2.59737299768	-0.307698413019	-3.86811133949
B	0.282063447104	0.196769505826	1.34735513496
B	-2.23902458289	1.76535484254	1.89622878901
B	-3.02563680076	0.320099544324	2.04533497184
B	-3.89620893473	-0.993456600375	1.76832769343
B	-3.40059923471	-2.31648637371	1.01452990472
B	-1.32024726665	-3.39991546849	-0.686894537114
B	2.93569474217	1.24856645742	-3.69366348558
B	2.61283614253	2.15842795977	-2.42010358981
B	-0.187776688909	-2.21702892218	-0.163633782665
B	-1.67578247424	-2.43489415818	0.656409692803
B	1.80594246509	-0.327305735238	-0.962366020535
B	1.05909064914	-1.80226569544	-1.18875921766
B	-1.48014275211	3.07093206091	1.55563138716
B	-0.116812942684	3.31913108747	0.760226057617
B	0.980466745484	3.87910373042	-0.265963757205
B	1.8685164458	3.10091072217	-1.27475742613
B	0.123419347763	2.27578806927	2.84136261994

structure matching polymerization for boron cluster 36_1-35

B	2.89924115132	2.74229556516	0.410175307733
B	2.47376231442	3.42844291096	1.93022088679
B	3.06985582126	2.25539436155	-1.18417901423
B	2.01062279622	1.81000767936	1.47811321026
B	1.40862676344	2.60244936421	2.89562575231
B	-0.379836570131	-0.977923107137	-2.71067400838
B	3.50514553272	3.9009487868	-0.685895404551
B	0.714006755429	-1.13160000831	0.467819921306
B	1.04421186517	0.932162871893	2.55428757271
B	3.24301296062	4.29450514078	0.822151511875
B	2.13040254811	0.922116922068	-1.71074276067
B	0.194187546035	1.88892282943	3.62636699651
B	0.30561698897	-1.25591279336	-1.15344957159
B	2.72869668602	2.08729969393	-2.81506724578
B	-2.0035805434	-1.42054274726	-3.12618370941
B	2.31059074737	1.20131579159	-0.0819026788971
B	-1.33901777753	-0.726741552824	2.46748191376
B	3.07986619621	3.32540874717	-3.83897478217
B	1.55149584228	0.205424958516	1.03642417688
B	1.80398410447	0.801770220176	-3.38183344834
B	1.05343390957	1.06269929723	-4.95937862549
B	2.2246311432	2.12893095838	-4.4524562491
B	3.46227939059	3.54946715044	-2.3078893267
B	-0.250793839369	0.227101434461	-5.29084932951
B	-1.06403355437	-0.724034670636	-4.29533704592
B	1.09182512615	-0.260525869146	-2.25525297844
B	0.479584260212	-0.113583057799	-3.85992723787
B	-0.549989553532	0.538683421019	3.22530233974
B	-2.93605422547	-1.80855097308	-1.90100825716
B	-2.04257156906	-1.55620532134	1.20408766955
B	-1.29980122215	-1.83136685294	-1.57492589327
B	0.316194014181	-0.442364227622	2.02327150649
B	-2.57195620771	-1.86857327502	-0.352355802426
B	-0.821259866352	-1.83320496899	-0.00036035088772
B	-0.444330417515	-1.79990675872	1.57472221577
B	-2.7789518054	-2.24708572667	2.65972665143

structure matching polymerization for boron cluster 36_2-34

B	2.18010736184	-2.70254329405	1.18978330912
B	1.71160751116	-4.29240840992	1.61053903743
B	2.5997365334	-1.21008811732	0.533359414676
B	0.797672397444	-2.86528139444	2.12391265523

B	0.206640556408	-4.52567307013	2.29914343018
B	-1.99347950988	1.76765336987	0.0762662336639
B	3.44829513326	-2.67302643752	0.0242243688457
B	-3.06022179885	-0.857951485986	1.88382282583
B	-1.43703898372	-0.351717545285	2.03646597302
B	2.98625232634	-4.05190850146	0.697077379673
B	1.4580364786	1.28469165879	-0.505965310149
B	-1.33047865308	-4.71106859334	2.64545360073
B	-2.58341794684	0.64528229539	1.2448208257
B	2.59831643244	0.0315469258569	-0.599604952003
B	-0.0113023105761	2.12461869281	-0.760245641754
B	0.422628425227	1.34244365301	0.749662357678
B	-2.46101491814	-3.58514624835	2.67100939652
B	3.6427800341	-1.30396996102	-0.889437539535
B	-1.0281524614	1.11021370271	1.38440141749
B	-3.6936641629	1.21680853197	-0.0302688667708
B	-4.20940479628	0.0280574324618	0.994736857413
B	-4.6028446192	-1.38114052694	1.64236702578
B	-3.59401964217	-2.43354348394	2.3049136611
B	-0.799558866518	-3.15849960786	2.55382255496
B	3.59731633659	-0.0620112405535	-1.90053871764
B	2.53886394229	1.13535273077	-1.89433500003
B	-0.286889133572	-1.5534790681	2.21236857578
B	-1.9295580907	-1.89943694415	2.55302914759
B	1.5113910392	0.0927560117054	0.71569177088
B	1.22304185553	-1.32665507778	1.54435051018
B	-3.0831362674	2.18709014722	-1.07058101812
B	-1.56358306591	2.50727267863	-1.44658870257
B	-0.203101746104	2.75227816331	-2.25882050562
B	1.18165361907	2.07168447057	-2.08239460389
B	1.64155842918	3.80858005455	-3.91261859873
B	0.203284018107	4.07680833618	-3.20644087172

structure matching polymerization for boron cluster 3_1-2

B	-0.239891375931	0.222619027045	-0.180743046704
B	0.625516592876	-1.24639023717	-0.0188917073089
B	0.880909585766	-0.151572190212	1.15388897891

structure matching polymerization for boron cluster 4_1-3

B	0.526286880078	0.0427580196695	-0.114758989139
B	-2.20841839401	-0.119006527132	0.251990705465
B	-0.869249425388	0.681003425091	0.33448820406
B	-0.838740031528	-0.880184278764	0.267509709689

structure matching polymerization for boron cluster 4_2-2

B	-0.108696108471	0.152298277731	-0.785426109295
B	0.208922523524	-0.288112422113	0.745724926625
B	-1.26346353395	1.523717796	-0.345603469454
B	-0.686402529002	1.11849374932	1.11797459245

structure matching polymerization for boron cluster 5_1-4

B	-0.0784269090932	0.78174039119	0.171073436177
B	-0.093241650473	-1.56160001309	-0.129539236677
B	-1.37145681498	-1.22676241886	0.850213432565
B	1.12230636168	-1.67263791945	-1.04499088166
B	0.812158834388	-0.221520380361	-0.700390391644

structure matching polymerization for boron cluster 5_2-3

B	0.940477274859	-1.00137783803	0.253437047299
B	0.503788237287	0.460664946916	0.811111014932
B	-1.75124272655	0.562654707064	-1.27495477095
B	-0.851744578063	0.904304517106	-0.0443558210025
B	-0.488278917926	-0.309632207541	-0.959218833121

structure matching polymerization for boron cluster 6_1-5

B	-0.270598879161	0.209073522959	0.520467865339
B	1.13012786242	-1.69208990966	-2.76251930325
B	1.36183319069	-0.969356076977	-1.33906283366
B	0.132401795208	0.229653343525	-1.07274662599
B	1.27384120031	-0.0476577877537	-0.0182892097968
B	0.0619093816347	-0.580262413294	-2.42423465411

structure matching polymerization for boron cluster 6_2-4

B	1.24093170183	0.382539106094	-0.428189261943
B	0.348100868581	-0.180151783461	0.806921559292
B	-2.6329034547	-0.997151642661	-0.444748294904
B	-1.9078018208	0.305931766647	-0.929456000594
B	-0.500723145178	0.598036917456	-0.302124754338
B	-1.22582477908	-0.705046491852	0.182582951351

structure matching polymerization for boron cluster 6_3-3

B	0.842544808298	0.136369075527	1.32802250616
B	-0.211783297657	1.00464167531	0.569939248908
B	0.89138806329	0.244040834131	-0.234562644985
B	-1.28565605656	-1.38916408334	-0.824950501505
B	-1.03495460697	0.112181500082	-0.473801658725
B	0.108187586983	-0.736170487426	-1.11897513786

structure matching polymerization for boron cluster 7_1-6

B	0.191649885981	-0.517184395263	-0.41751063721
B	-1.87582115541	0.745461662133	1.03777092409
B	-0.8347812708	1.28954230197	2.06872960343
B	-1.57561141522	0.455850153331	-0.44950485396
B	-0.254107304656	1.04934349004	0.459394602045
B	0.667159321111	1.64393768835	1.8211352017
B	1.39342766177	1.50764960686	0.46459300186

structure matching polymerization for boron cluster 7_2-5

B	0.660939459767	-0.224033743066	-0.648670551751
B	0.223104293535	-0.737290134668	0.829211350978
B	-0.347773428075	0.674062993713	-1.70539189918
B	-0.284772349235	1.0338630873	-0.134139332095
B	-1.88952634454	1.28236368879	0.484780319184
B	-0.610046057259	1.40911264072	1.40049354901
B	-1.76009074486	0.920466923888	-1.04483720188

structure matching polymerization for boron cluster 7_3-4

B	-1.3471413601	0.423316312183	-0.503537083338
B	0.128656532262	0.911248908457	-0.348174121708
B	-0.40713447703	-0.24401244984	0.557929170901
B	1.16228869561	-1.48388335089	1.47335768061
B	1.31253817401	-0.261032713952	0.503408339133
B	1.8924453417	-0.565396365748	-0.921305932357
B	1.7421958633	-1.78824700268	0.0486434091232

structure matching polymerization for boron cluster 8_1-7

B	-0.488792947502	-0.0451661425961	0.505086975603
B	2.51732525383	1.03718678675	-2.78222867021
B	1.9680808949	-1.22617150246	-1.15580049188
B	0.839602839094	-0.570597043124	-0.305571901273
B	0.198611509823	0.507423510698	-1.22924744936
B	2.78751943154	-0.439200848519	-2.36718750739
B	1.01967076608	1.29278813433	-2.44052078299
B	1.86342137062	0.432956348467	-1.28683762689

structure matching polymerization for boron cluster 8_2-6

B	0.0108191513245	1.06130712022	-0.175196851601
B	0.497758510603	0.221015512023	1.12713442281
B	-0.0597978413807	-2.46693936595	-0.105146014362
B	-0.301520832853	-2.25409921256	-1.64998735695
B	-0.290976817002	-1.37867552479	0.973132585664
B	-0.5773826526	-0.845417655285	-0.644323614529

B	-0.779986412749	-0.977248774323	-2.42392372671
B	-0.972560545895	0.403027974523	-1.73177470535

structure matching polymerization for boron cluster 8_3-5

B	0.191346459735	-1.1851318817	-0.680737925789
B	0.873331321534	-0.0274172293039	0.11599836644
B	-0.0364262080963	-1.05469353063	0.864175234906
B	-1.95473582244	0.441199831755	-0.496696740892
B	-0.40296191363	0.849629576548	-0.331038199387
B	-0.270313006089	2.53528057906	0.070252760122
B	0.998683432556	1.60995005351	-0.0881053114232
B	-1.72473359879	1.95947439111	-0.131143806644

structure matching polymerization for boron cluster 8_4-4

B	0.895633399536	0.437454547238	0.875707692455
B	0.530062926908	-0.674825279791	2.03115450218
B	1.03536746153	1.48883067836	-0.221115321358
B	-0.426665254174	1.17676125347	0.0717261219783
B	0.229239076452	-1.52049622173	-0.0576959108202
B	0.129820791431	-0.0843075090256	-0.679160549513
B	-1.24643834335	0.306385622095	-1.32104058681
B	-1.14702005833	-1.12980309061	-0.699575948115

structure matching polymerization for boron cluster 9_1-8

B	0.232931590914	0.253589335289	-0.0952092303119
B	-1.12436206255	0.0493296534227	0.570763944722
B	-3.28091262083	-1.71259318331	0.177307811715
B	-2.61192648484	-0.324186909553	0.219235340201
B	0.0267192224694	-2.39777321414	1.10576858343
B	0.0439823737108	-0.878062504767	0.964636128777
B	-2.64427799566	-3.06817664382	0.472239965088
B	-1.16920336733	-3.38088577747	0.887401501326
B	-1.5355992593	-1.67367603056	0.628382915977

structure matching polymerization for boron cluster 9_2-7

B	0.418851055049	0.475761361643	-1.01970163673
B	0.421464292724	0.69642623817	0.58982216178
B	-1.09018764667	-1.52074390201	0.557706454359
B	-0.575754405245	-1.23610225789	2.08985028905
B	-1.60462088809	-1.80538554614	-0.974437380329
B	-1.38809623387	-0.31897772707	-0.492817006513
B	-1.33504809541	-3.02283023189	-0.00830681901928
B	-0.845327197928	-0.0186575721343	1.12371972774
B	-0.792279059466	-2.72251007696	1.60822991523

structure matching polymerization for boron cluster 9_3-6

B	-0.20896358661	-0.0306568007923	0.895540599038
B	0.478492533096	0.290615912244	-0.469883589555
B	-0.0903253401598	-1.1406721513	-0.204205787112
B	-0.6307880525	3.97888725908	-1.86214471112
B	-1.2905374723	3.96256178071	-0.44541334479
B	0.253056839723	2.84975178804	-2.43648019552
B	-0.342022198017	2.5782555957	-0.856329432953
B	-1.19593296075	2.84722947159	0.64537006447
B	-0.404656779191	1.52932778862	0.492844518189

structure matching polymerization for boron cluster 9_4-5

B	0.448747659562	-0.176032592011	-0.475670216807
B	-0.277806290732	0.671189820638	0.640186924947
B	0.625907328446	-1.47485859972	0.40311860261
B	-0.100646621847	-0.627636187067	1.51897574436
B	-0.678761471139	-0.256080164253	-2.23830784938
B	-0.224956034246	0.964279816735	-1.28592031528
B	-0.845361657258	2.46508658169	-1.90456834632
B	0.0273179390802	2.39784092273	-0.59095722993
B	-1.19286205959	1.15792987441	-2.71576340095