

Supplementary Information

Carbon coated heterojunction CoSe₂/Sb₂Se₃ nanospheres for high-efficiency sodium storage

Gongqiang Li,^a Meng Song,^a Xiao Zhang,^{a,*} Yanfang Sun,^{b,*} Jinxue Guo^{a,*}

^aKey Laboratory of Optic-electric Sensing and Analytical Chemistry for Life Science, MOE, Key Laboratory of Biochemical Analysis, Shandong Province, College of Chemistry and Molecular Engineering, Qingdao University of Science & Technology, Qingdao 266042, PR China

^bCollege of Science and Technology, Hebei Agricultural University, Cangzhou 061100, China

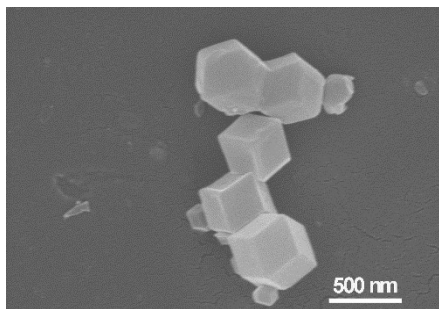


Fig. S1 SEM of ZIF-67 precursor.

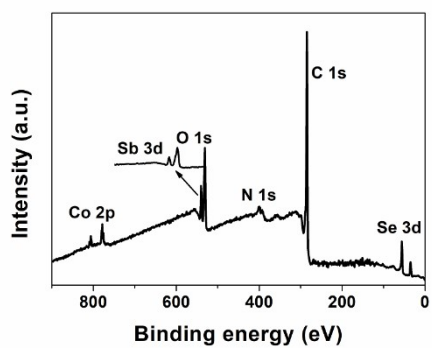


Fig. S2 XPS survey spectrum of CoSe₂/Sb₂Se₃@C.

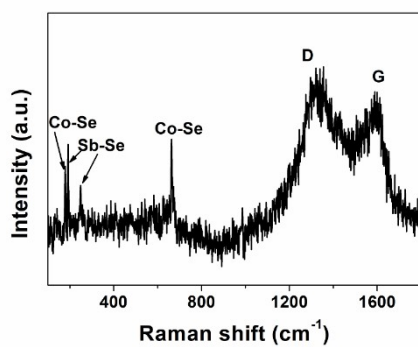


Fig. S3 Raman spectrum of CoSe₂/Sb₂Se₃@C.

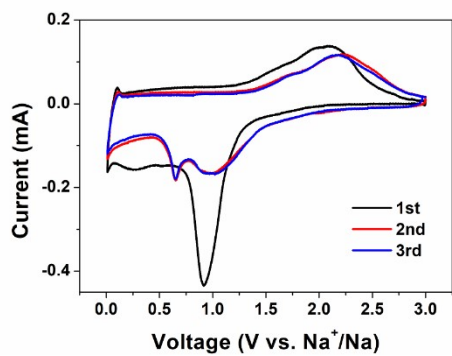


Fig. S4 The initial three CV curves of CoSe₂@C at a scan rate of 0.1 mV s⁻¹.

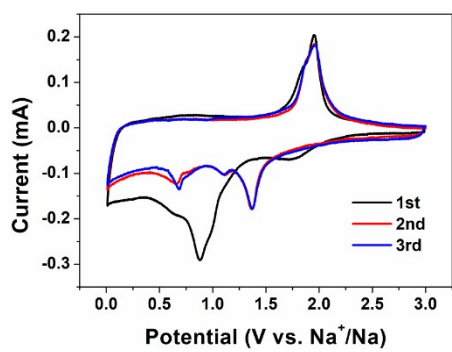


Fig. S5 The initial three CV curves of CoSe₂/Sb₂Se₃ at a scan rate of 0.1 mV s⁻¹.

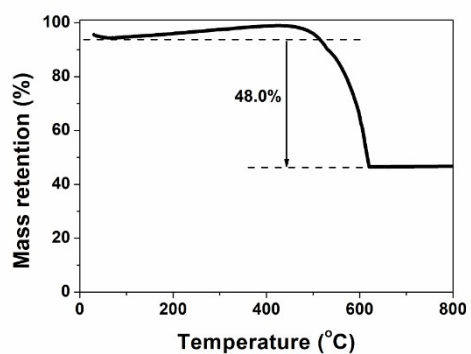


Fig. S6 TGA curve of CoSe₂/Sb₂Se₃@C.

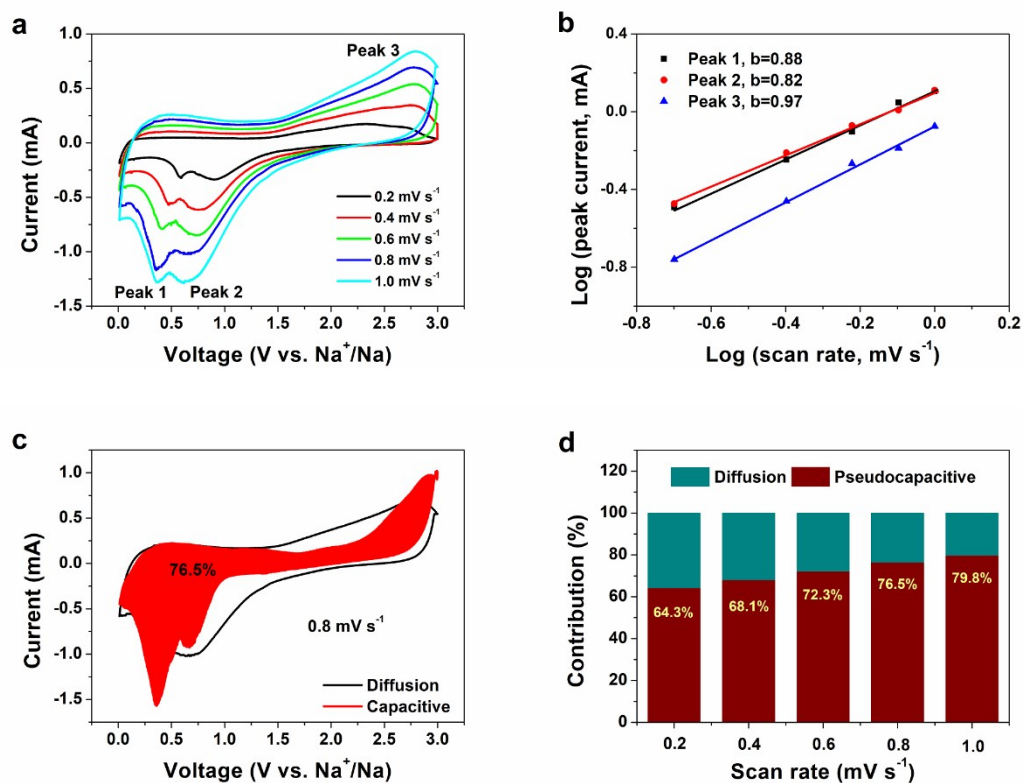


Fig. S7 Determination of pseudocapacitance contribution of CoSe₂@C. (a) CV curves at different sweep rates and (b) the corresponding log (peak current) versus log (scan rate) lines. (c) The separated regions of capacitive contribution (in red) and diffusion-controlled contribution (in white) at 1 mV s⁻¹. (d) Capacitive contribution ratio at various sweep rates.

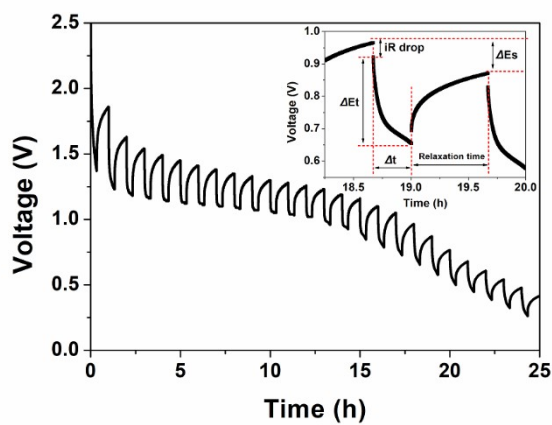


Fig. S8 GITT curves of CoSe₂@C (inset: voltage versus time curve for a GITT curve).