

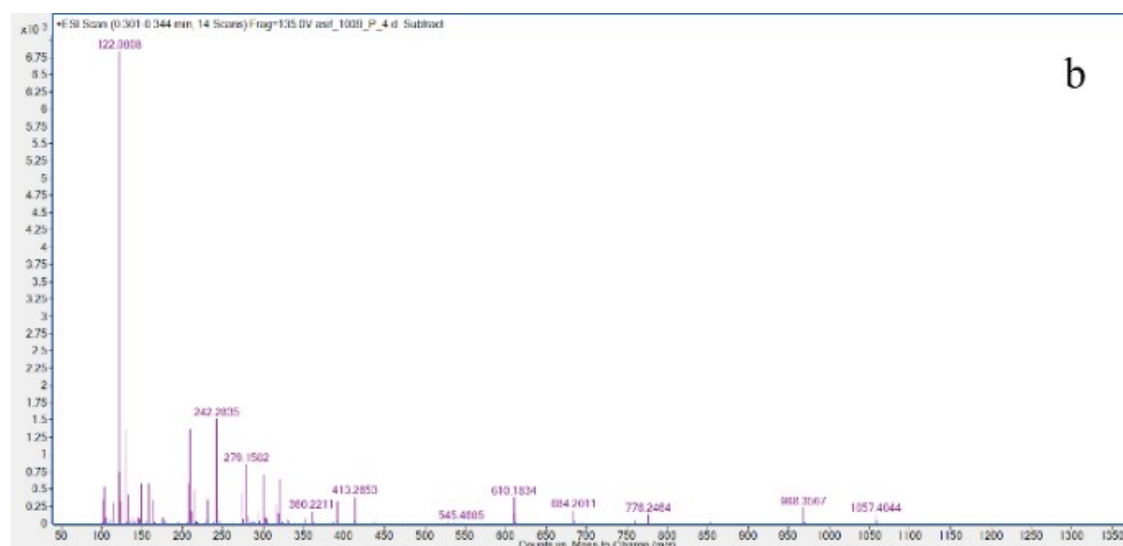
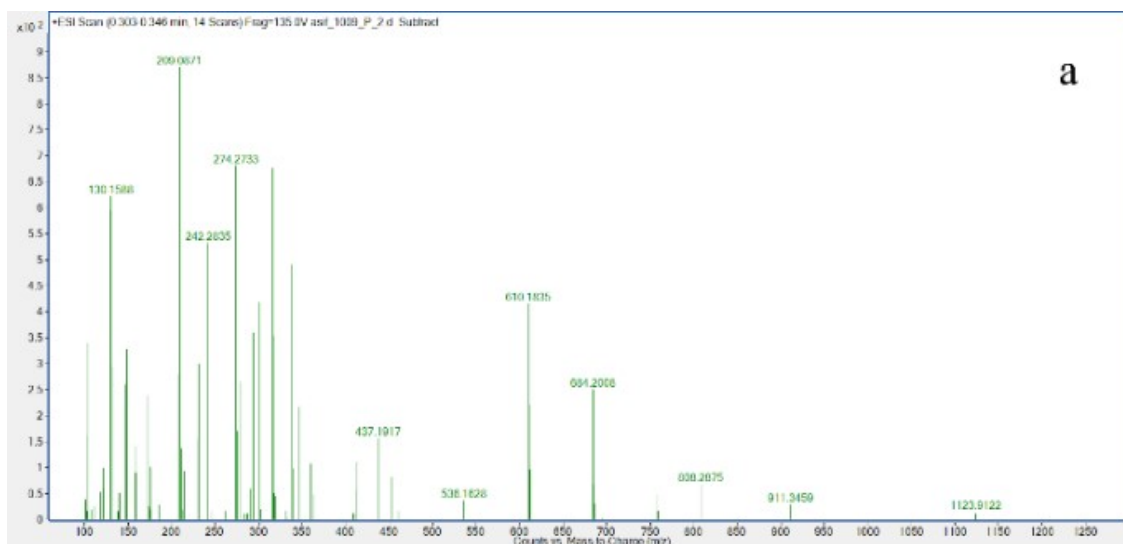
Supporting Information

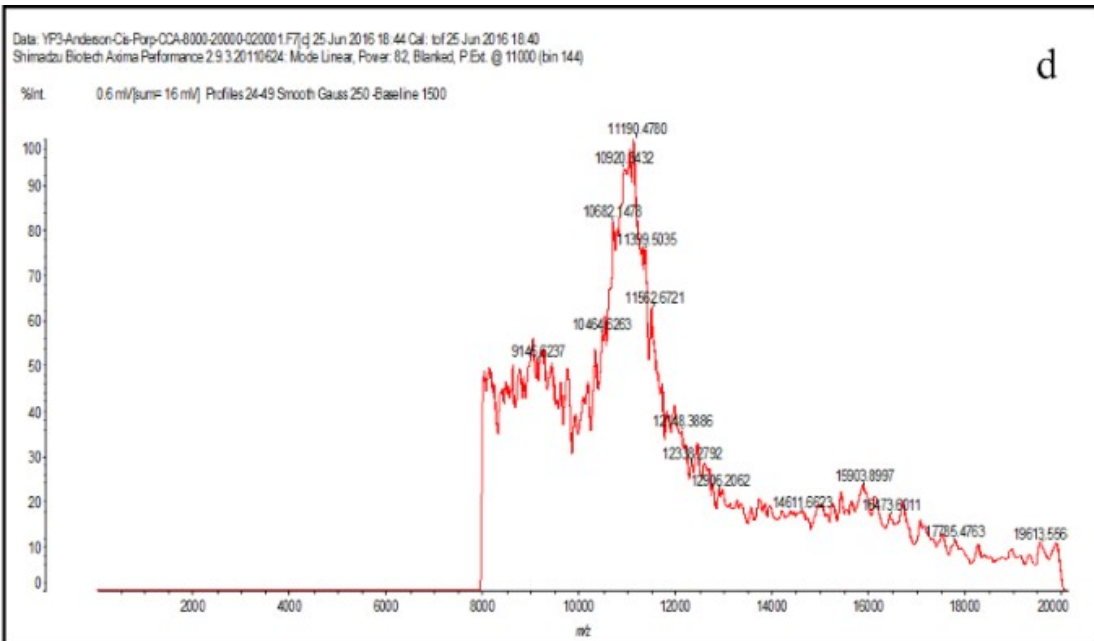
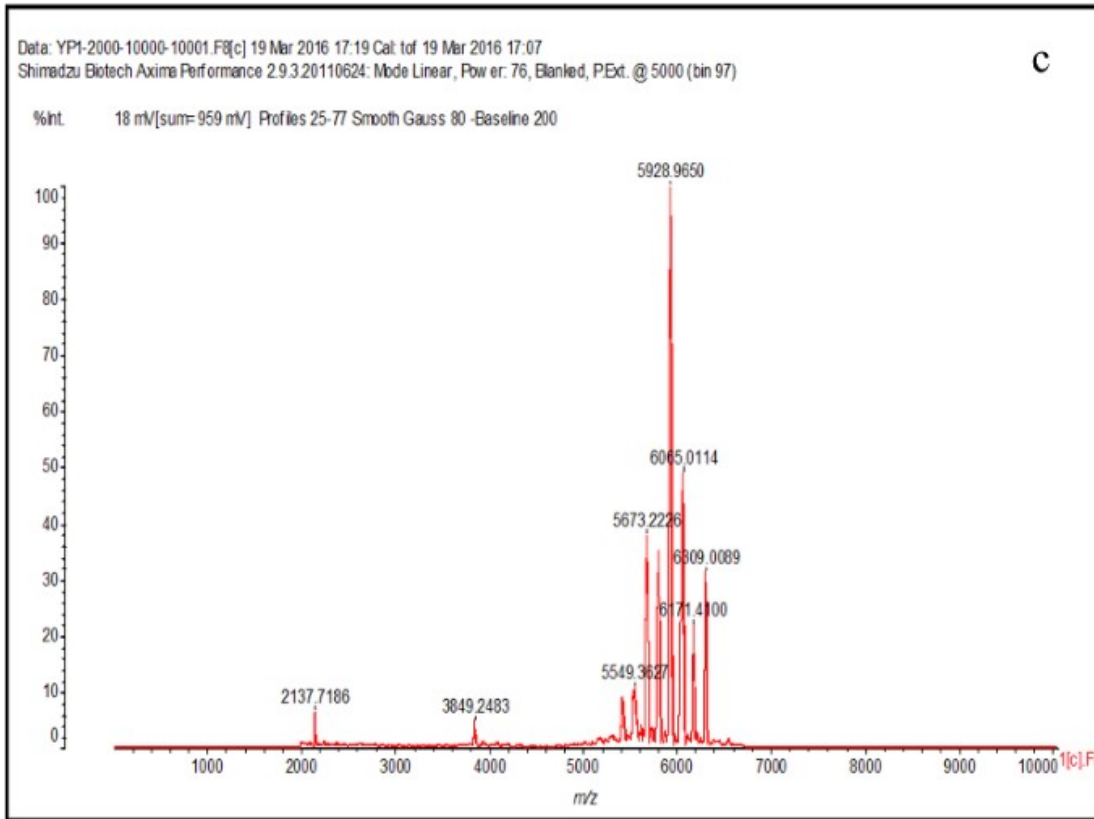
Designing Diverse Coordination Modes for the Covalently Attachment of Wells-Dawson type Polyoxometalate onto Porphyrins

Hafiz Muhammad Asif,^{a,b} Hafiza Fareeha Ashfaq,^b Yunshan Zhou,^{a,*} Lijuan Zhang^{*a} Arshad Iqbal,^a Xin Hu^a, Farooq Khurum Shehzad^a

^aState Key Laboratory of Chemical Resource Engineering, College of Chemistry, Beijing University of Chemical Technology, Beijing, 100029, P. R. China.

^bInorganic Research Laboratory, Institute of Chemical Sciences, Bahauddin Zakariya University, Multan, 60800, Punjab, I. R. Pakistan.

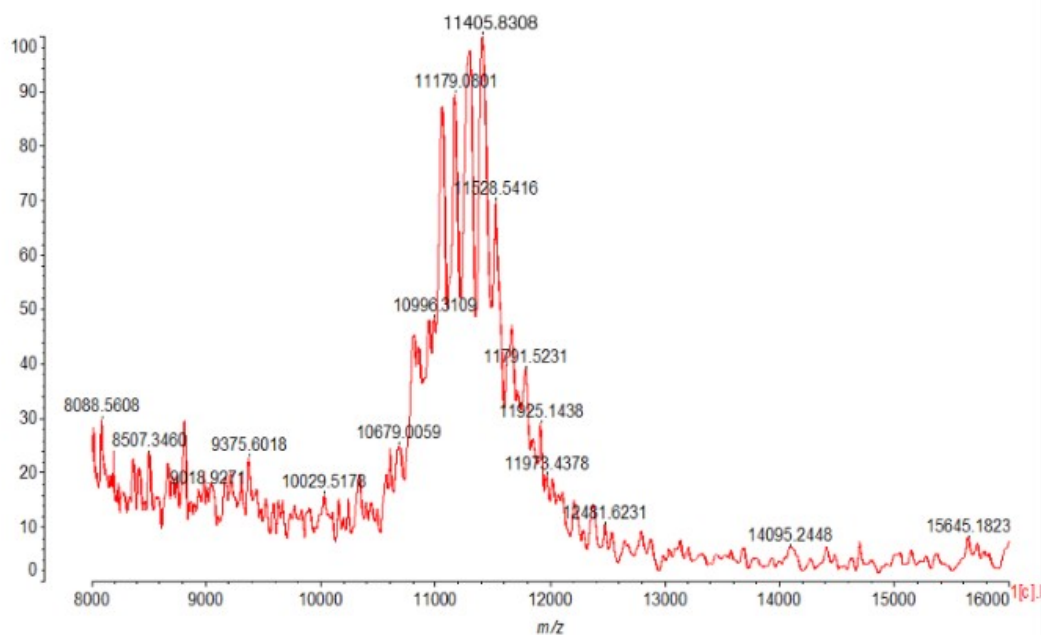




Data: YP1-8000-16000-0010001.I3[c] 17 Mar 2016 22:32 Cal: tof 17 Mar 2016 22:01
Shimadzu Biotech Axima Performance 2.9.3.20110624: Mode Linear, Power: 86, Blanked, P.Ext. @ 11000 (bin 146)

c

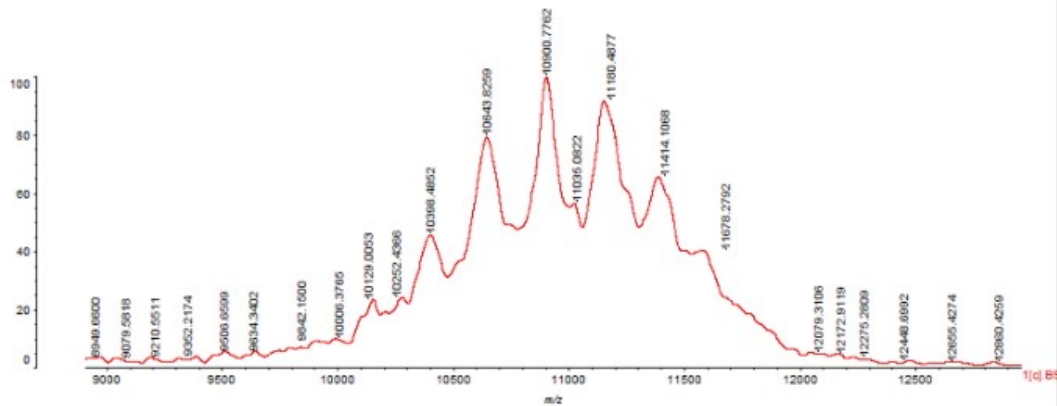
%Int. 0.2 mV[sum = 7 mV] Profiles 75-106 Smooth Gauss 150 -Baseline 1000



Data: YP1-DuoTal+JinSuSuan-CCA-010001.B9[c] 7 Jan 2017 13:04 Cal: tof 7 Jan 2017 13:04
Shimadzu Biotech Axima Performance 2.9.3.20110624: Mode Linear, Power: 56, Blanked, P.Ext. @ 10000 (bin 138)

f

%Int. 0.4 mV[sum = 13 mV] Profiles 38-69 Smooth Gauss 200 -Baseline 600



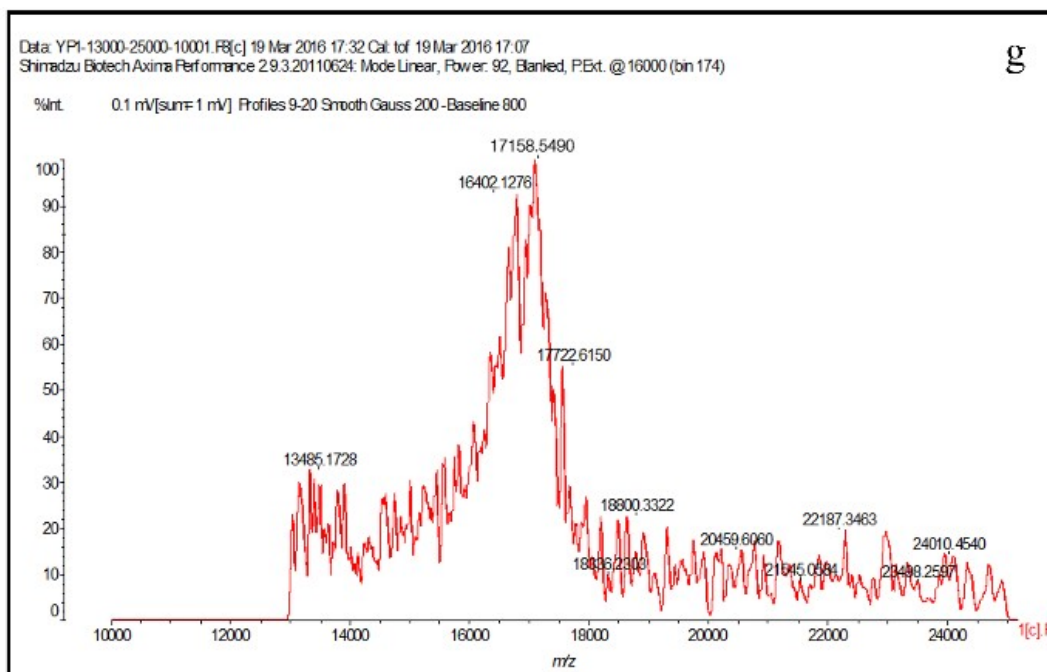


Figure S1. Electron spray ionization mass spectra (ESI-MS) for Trans-Tris2PyP (a), 1Py-3TrisP (b) and matrix assisted laser desorption ionization time-of-flight mass spectra (MALDI-TOF-MS) spectra for 3Py-P@1POM (c), Trans2Py-P@2POM (d), Cis-2PyP@2POM (e), Cis-2PhP@2POM (f) and 1Py-P@3POM (g)

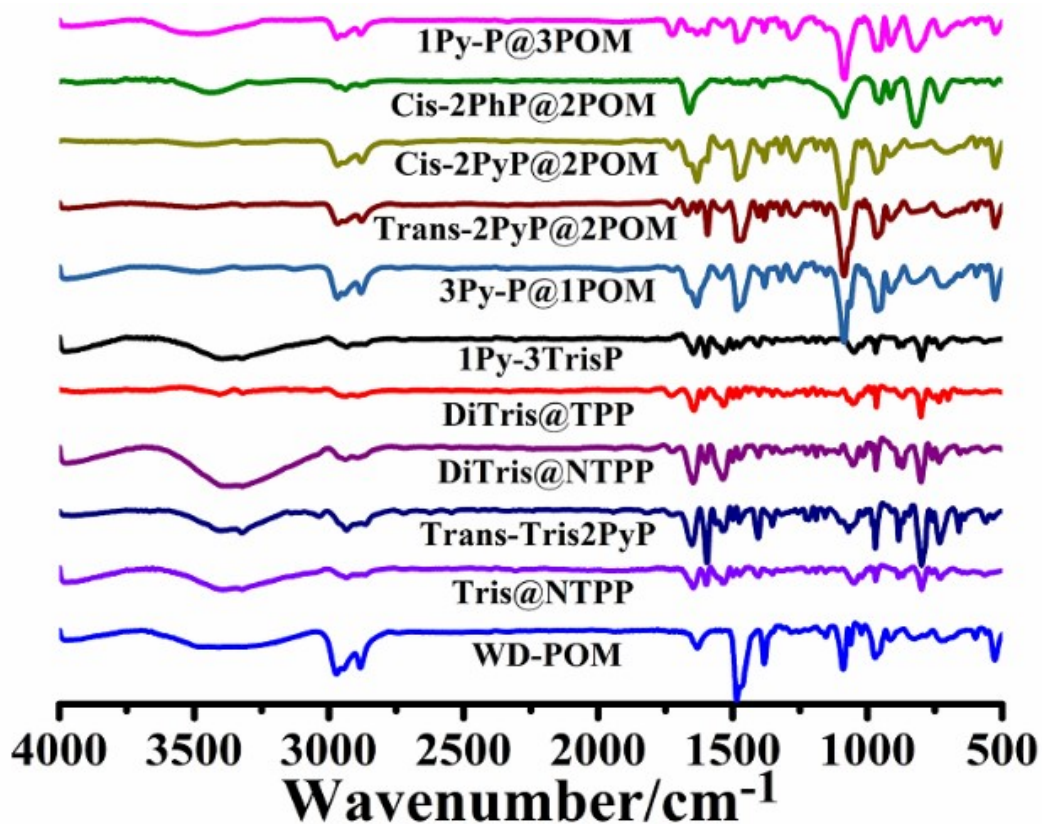


Figure S2. FT-IR spectra of WD-POM, Tris@NTPP, Trans-Tris2PyP, DiTris@NTPP, DiTris@TPP, 1Py-3TrisP, 3Py-P@1POM, Trans-2PyP@2POM, Cis-2PyP@2POM, Cis-2PhP@2POM and 1Py-P@3POM.