

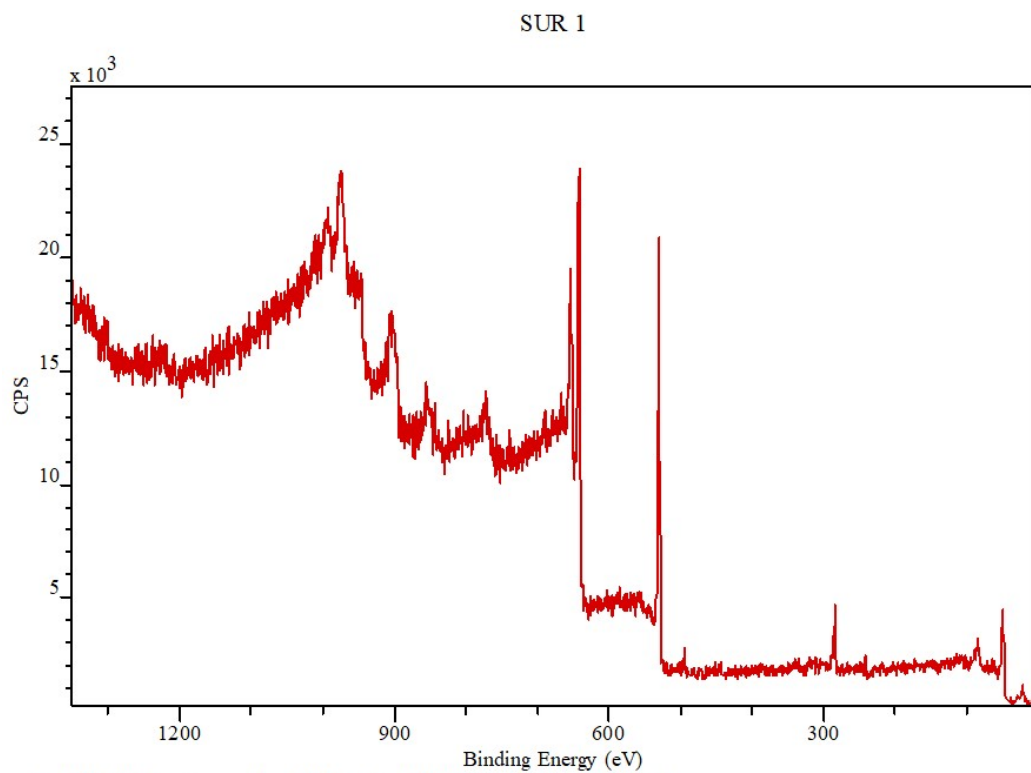
Formation of MnO₂-coated ITO electrodes with high catalytic activity for enzymatic glucose detection

Veronika Poltavets*^a (vpoltavets@ichf.edu.pl), Mirosław Krawczyk^a (mkrawczyk@ichf.edu.pl), Ganna Maslak^b (205_01@dmu.edu.ua), Olga Abraimova^b (205_04@dmu.edu.ua), Martin Jönsson-Niedziółka*^a (martinj@ichf.edu.pl)

Supplementary information

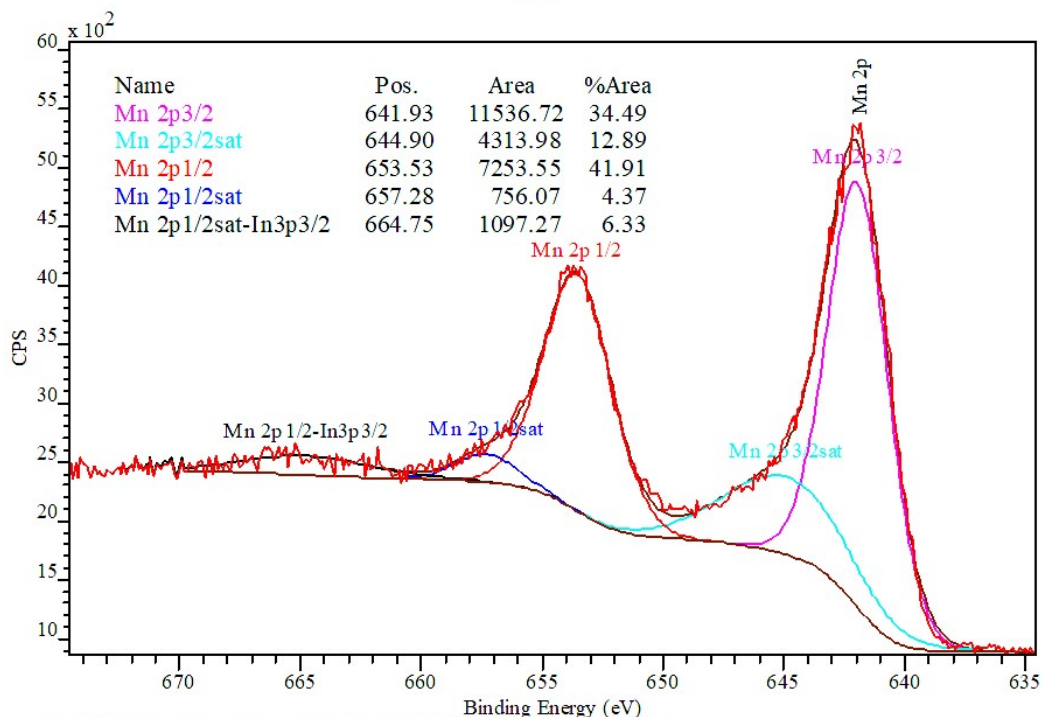
XPS data

pH1_CV_60



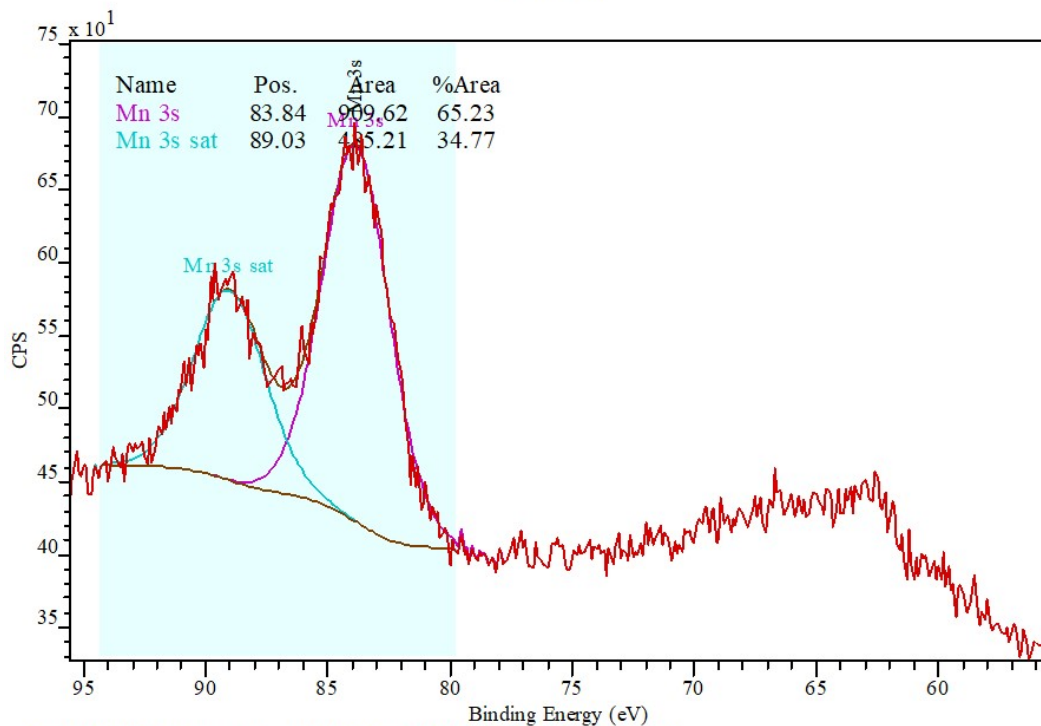
CasaXPS (This string can be edited in CasaXPS.DEF/PrintFootNote.txt)

Mn2p 2



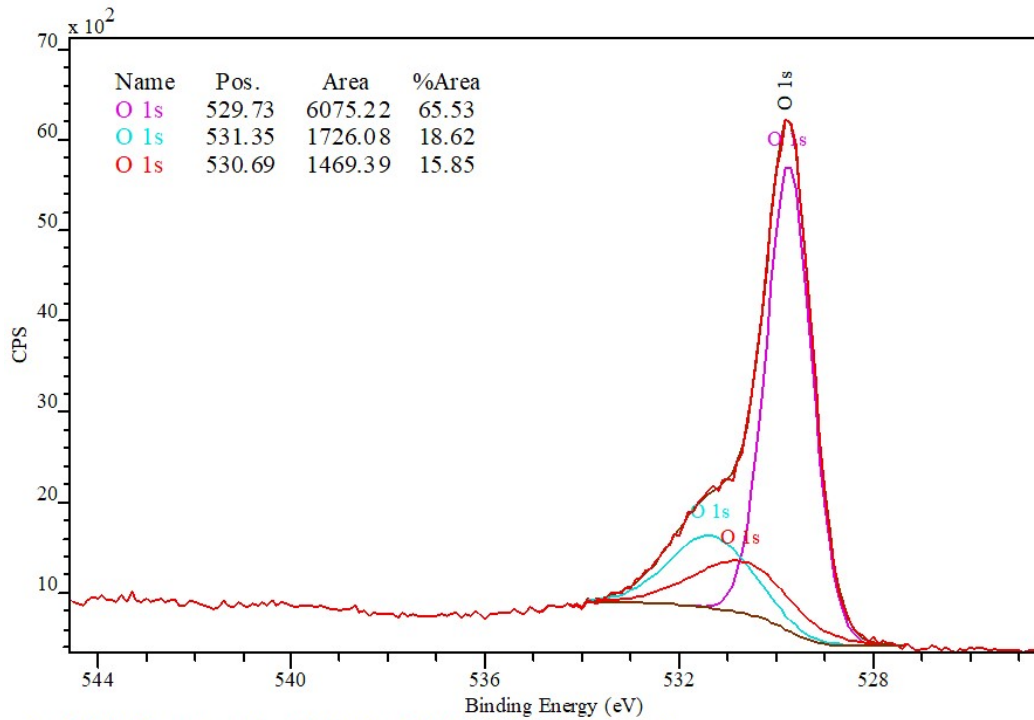
CasaXPS (This string can be edited in CasaXPS.D EF/PrintFootNote.txt)

Mn3s 12



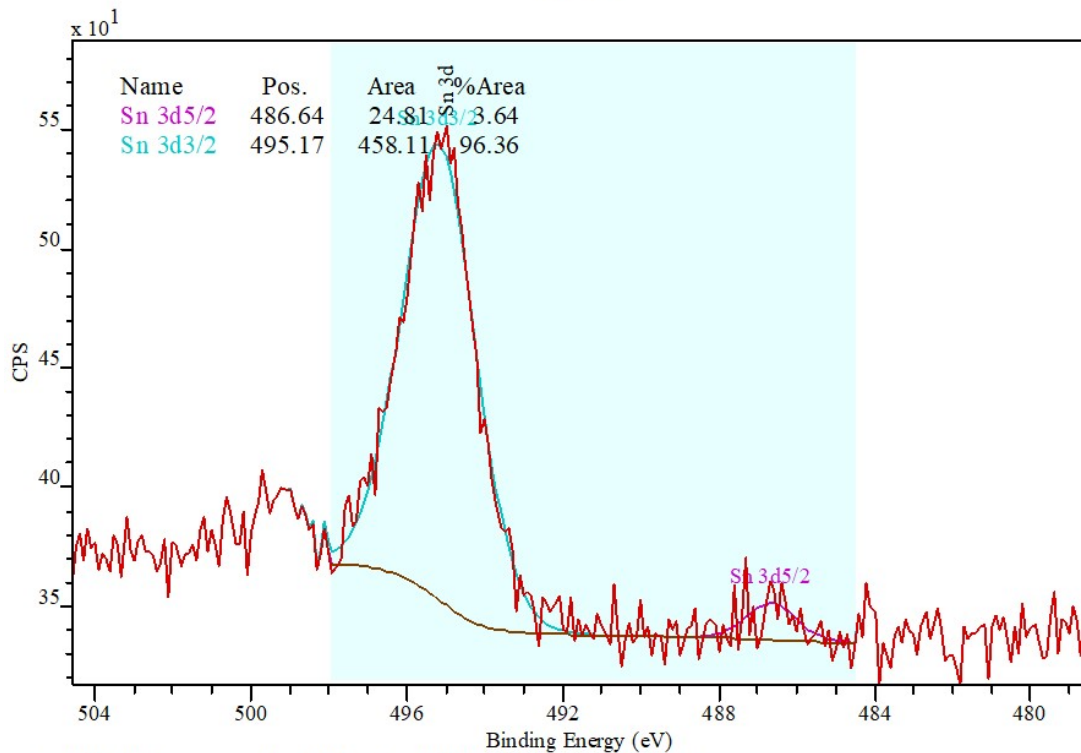
CasaXPS (This string can be edited in CasaXPS.D EF/PrintFootNote.txt)

O1s 3



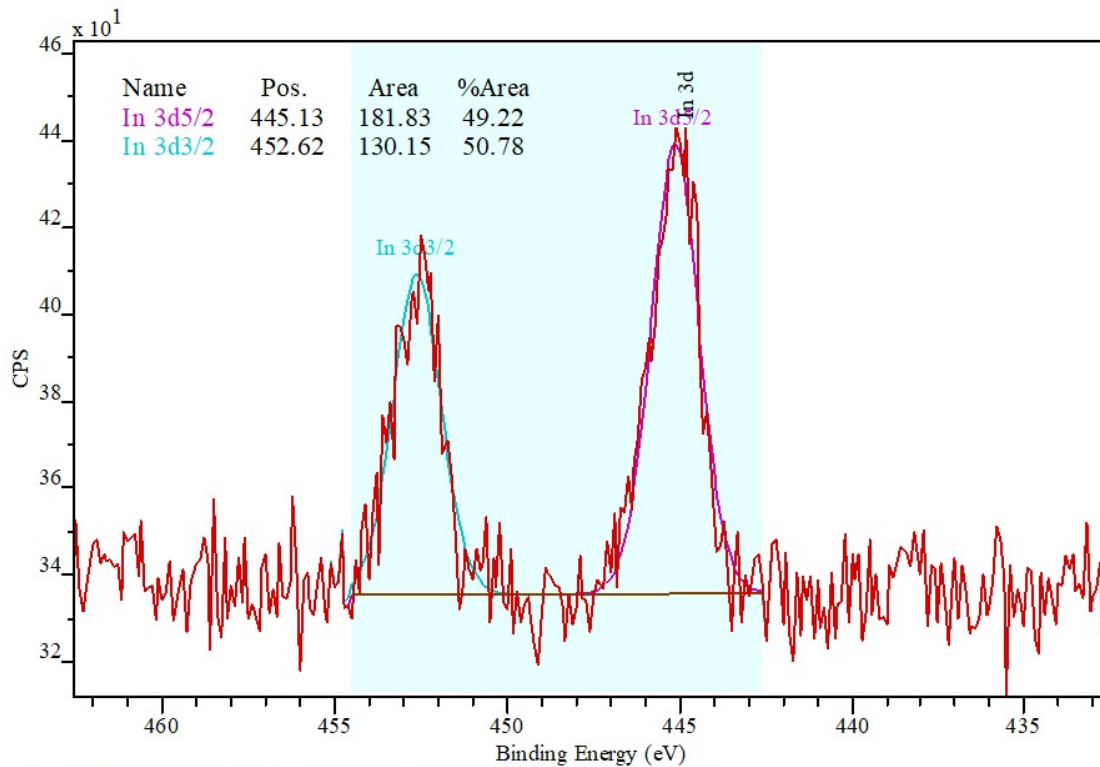
CasaXPS (This string can be edited in CasaXPS.DEF/PrintFoot Note.txt)

Sn3d 4



CasaXPS (This string can be edited in CasaXPS.DEF/PrintFoot Note.txt)

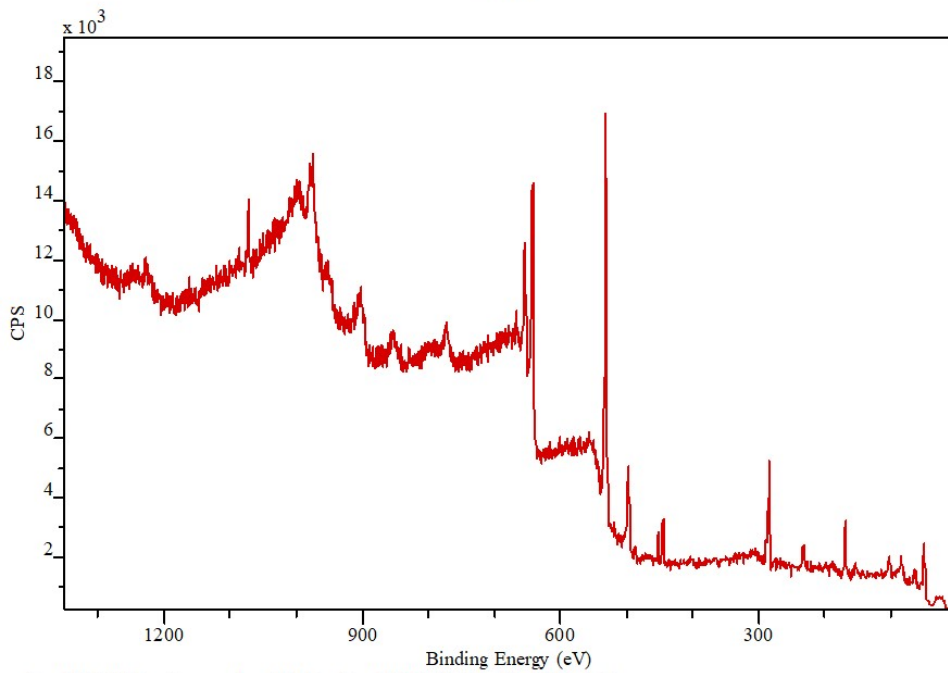
In3d 5



CasaXPS (This string can be edited in CasaXPS.D\EF\PrintFootNote.txt)

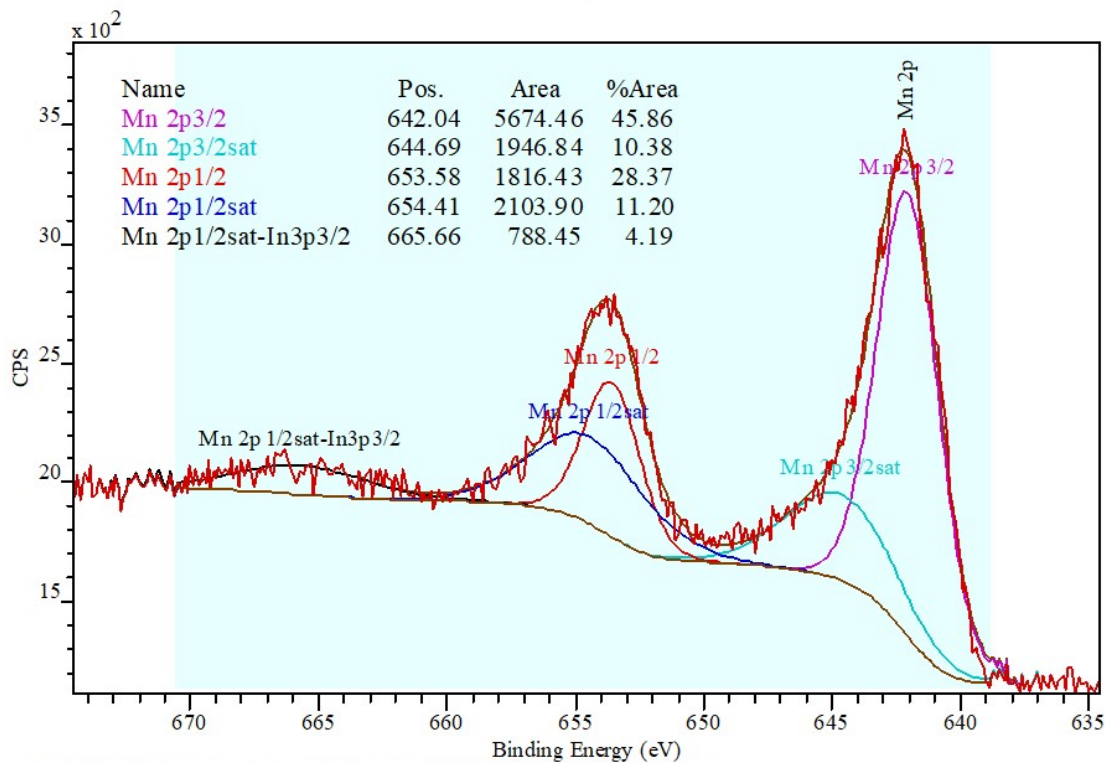
pH1_CV_90

SUR 1



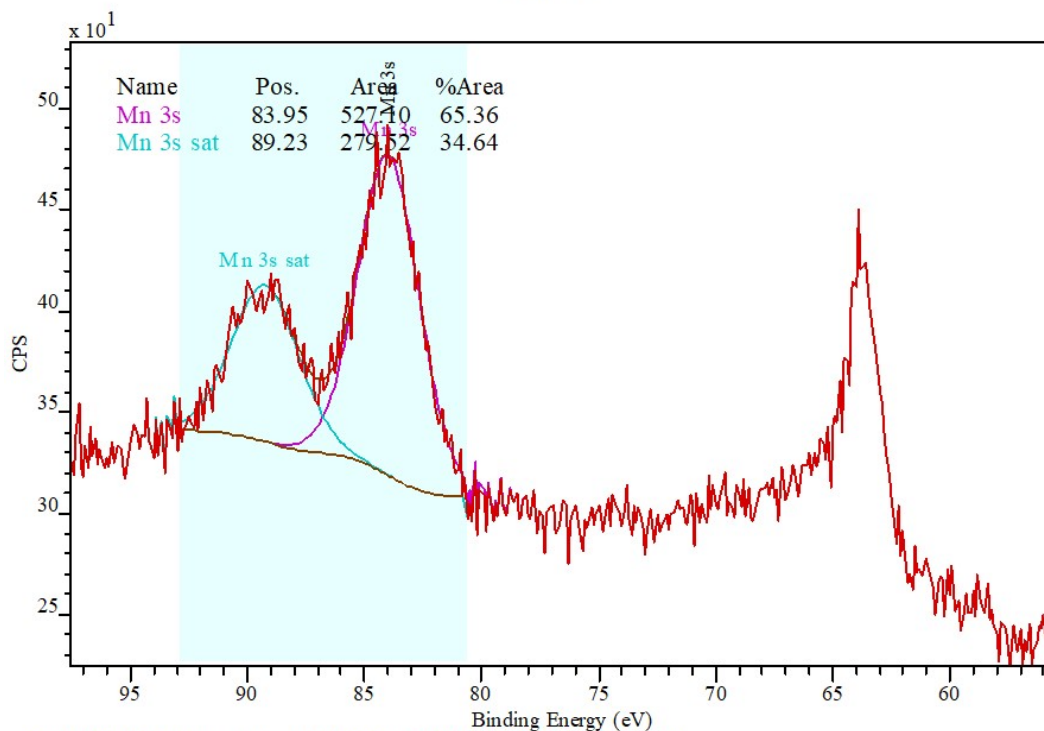
CasaXPS (This string can be edited in CasaXPS.D\EF\PrintFootNote.txt)

Mn2p 2



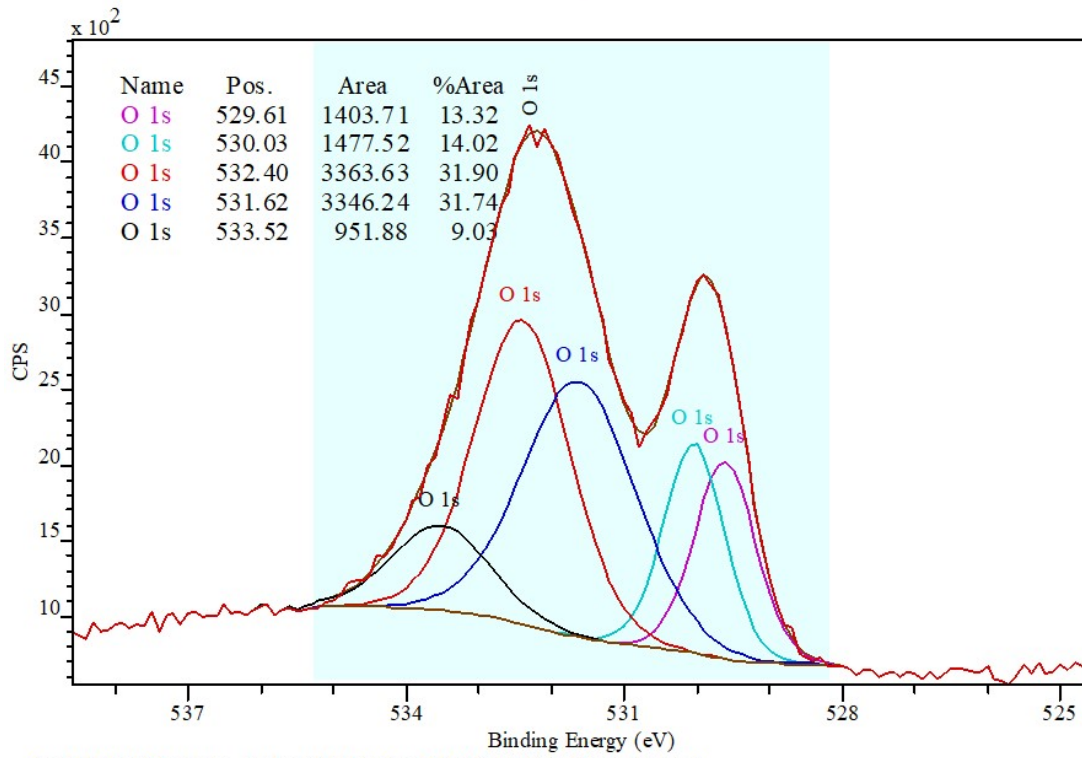
CasaXPS (This string can be edited in CasaXPS.DEF/PrintFootNote.txt)

Mn3s 13



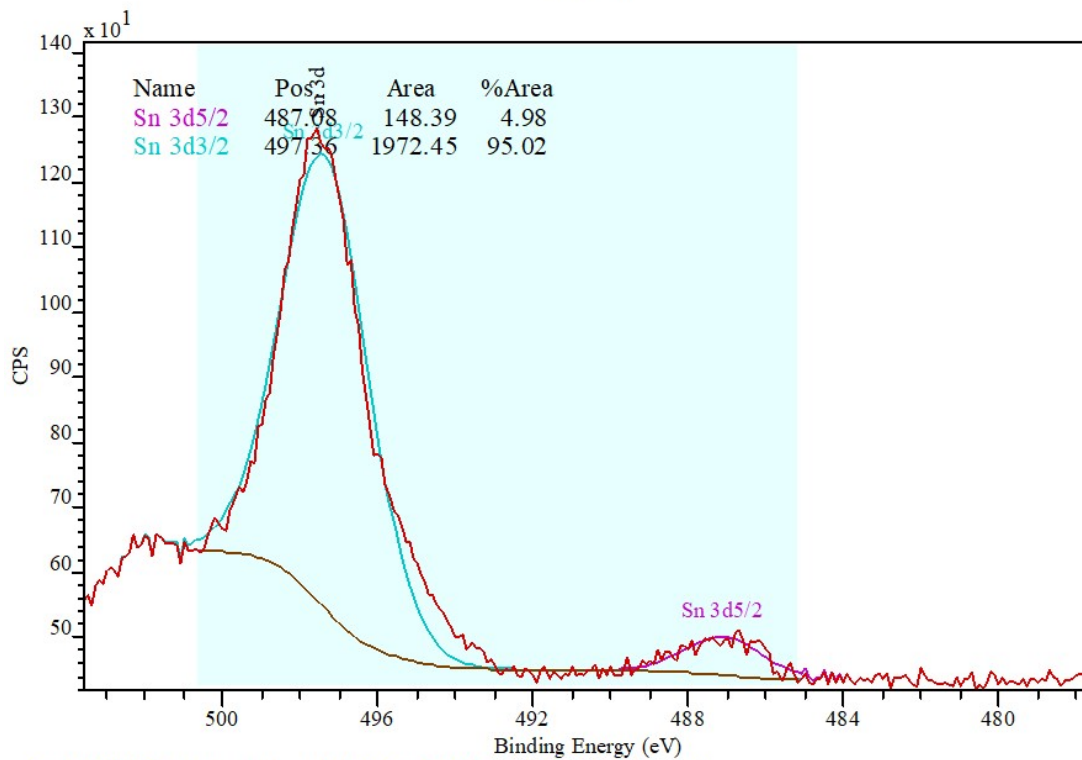
CasaXPS (This string can be edited in CasaXPS.DEF/PrintFootNote.txt)

O1s 3



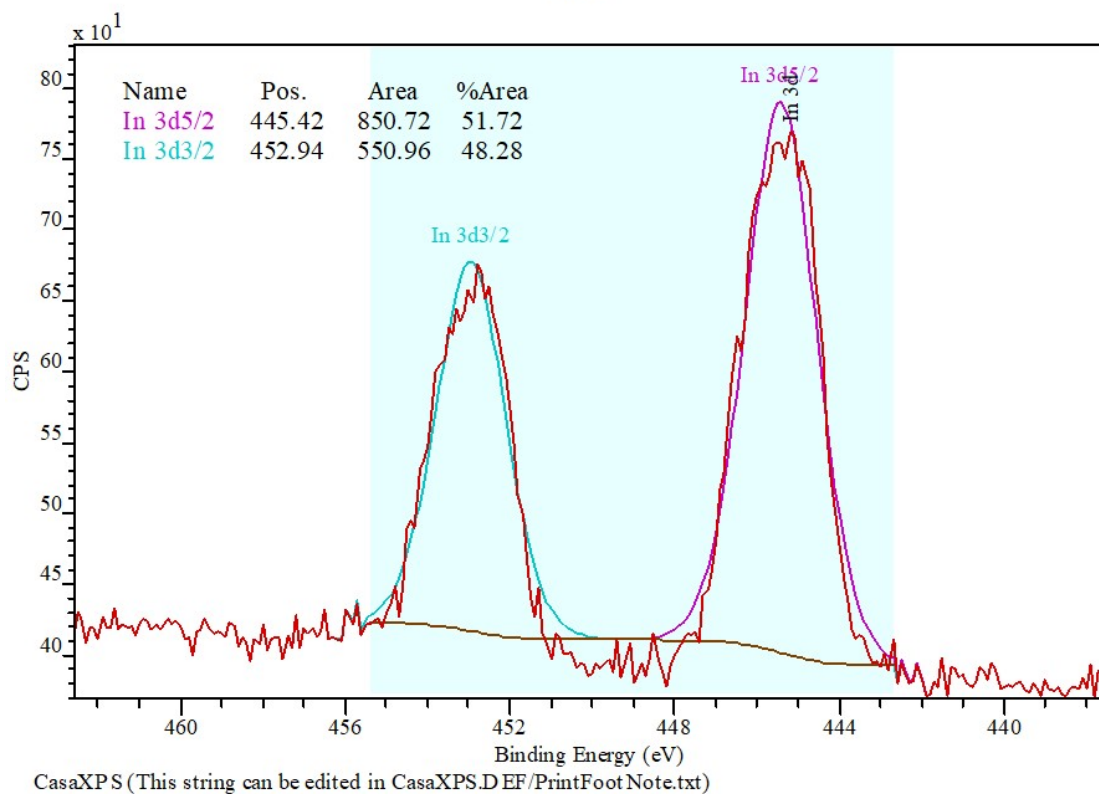
CasaXPS (This string can be edited in CasaXPS.DEF/PrintFootNote.txt)

Sn3d 4



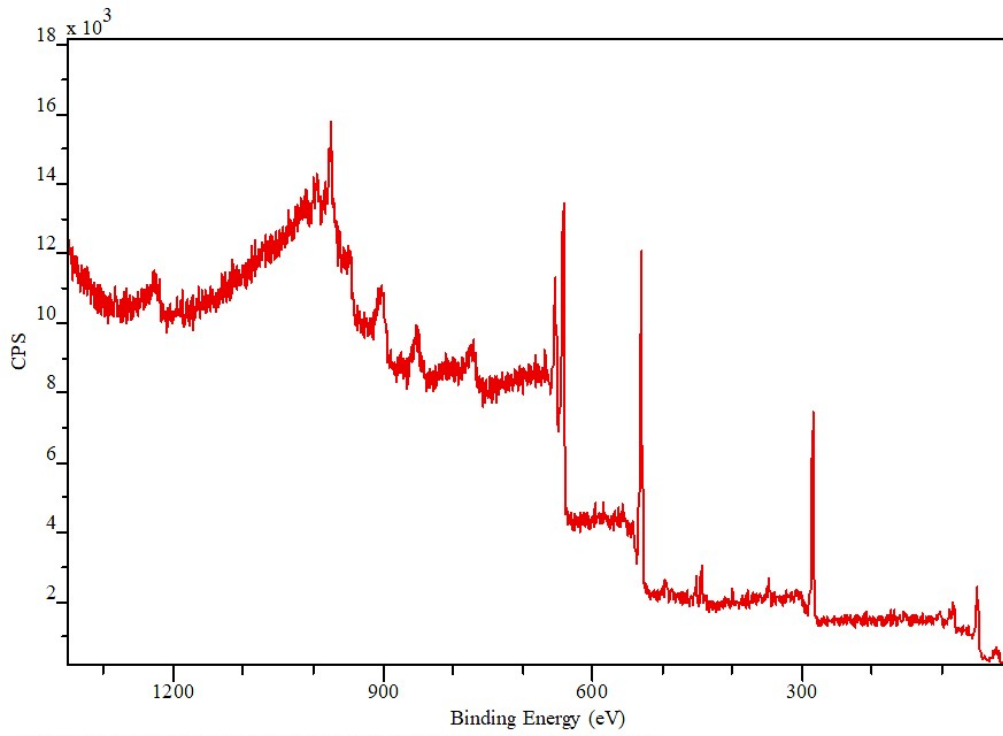
CasaXPS (This string can be edited in CasaXPS.DEF/PrintFootNote.txt)

In3d 5



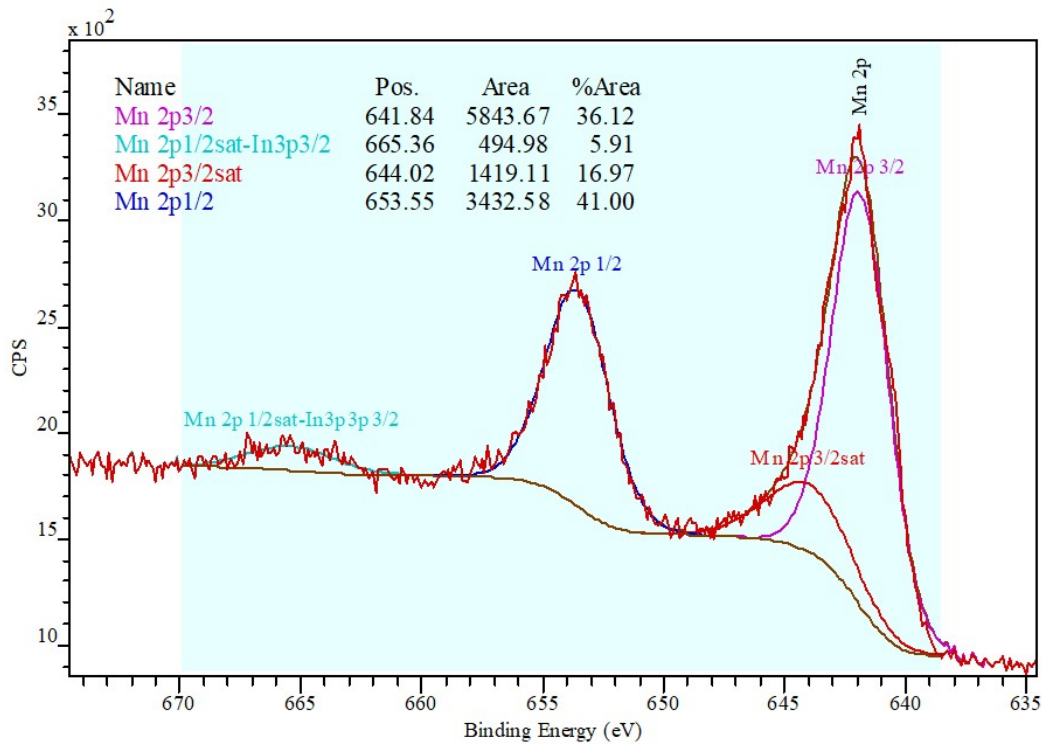
pH3.5_CV_60

SUR 1



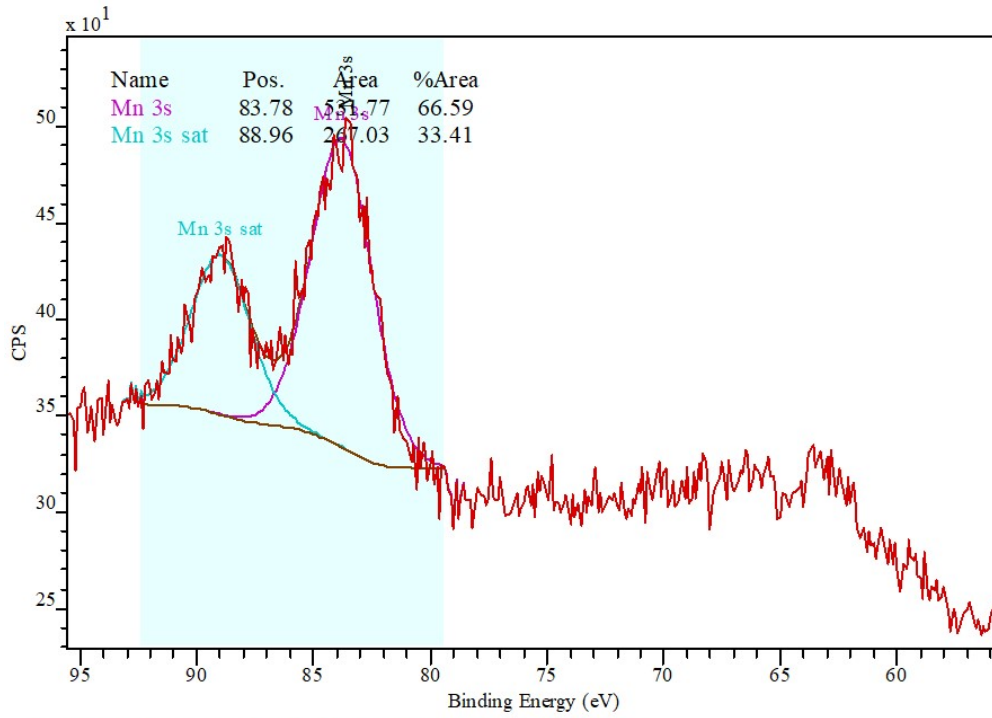
CasaXPS (This string can be edited in CasaXPS.DEF/PrintFootNote.txt)

Mn2p 1



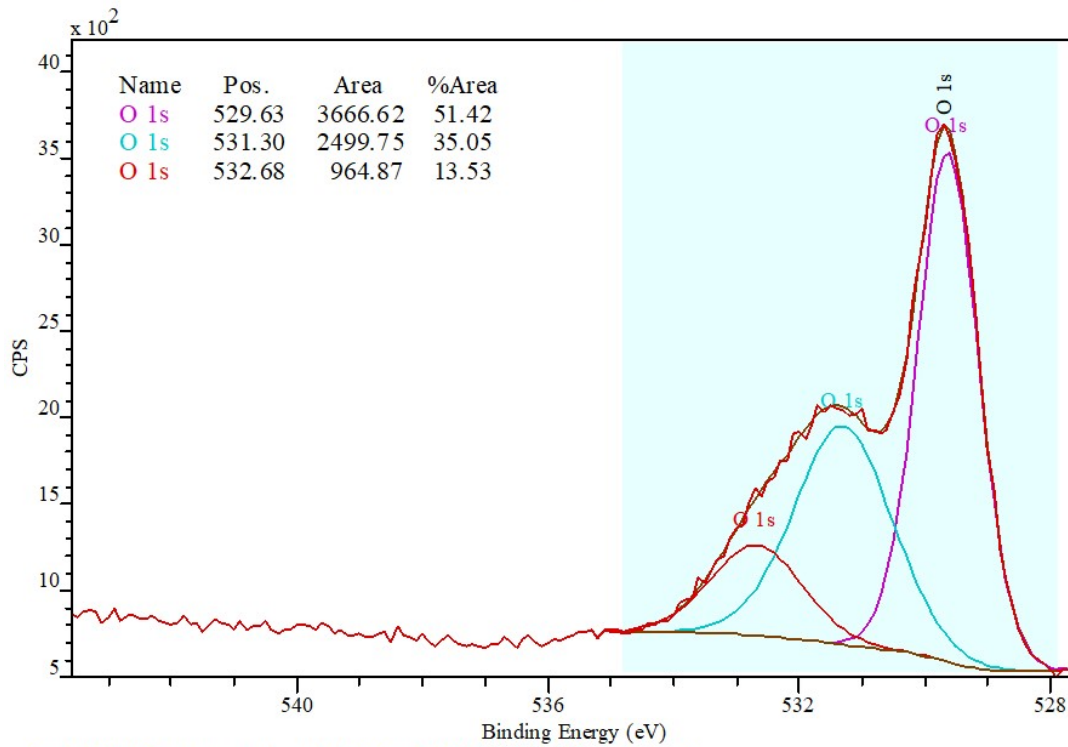
CasaXPS (This string can be edited in CasaXPS.DEF/PrintFootNote.txt)

Mn3s 11



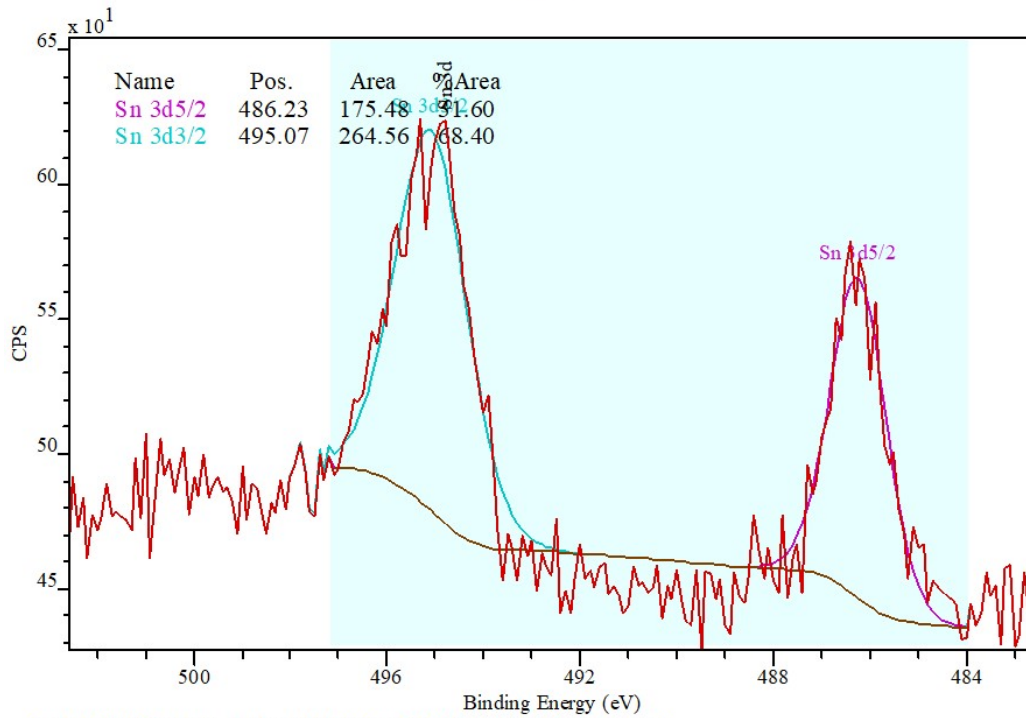
CasaXPS (This string can be edited in CasaXPS.DEF/PrintFootNote.txt)

O1s 2



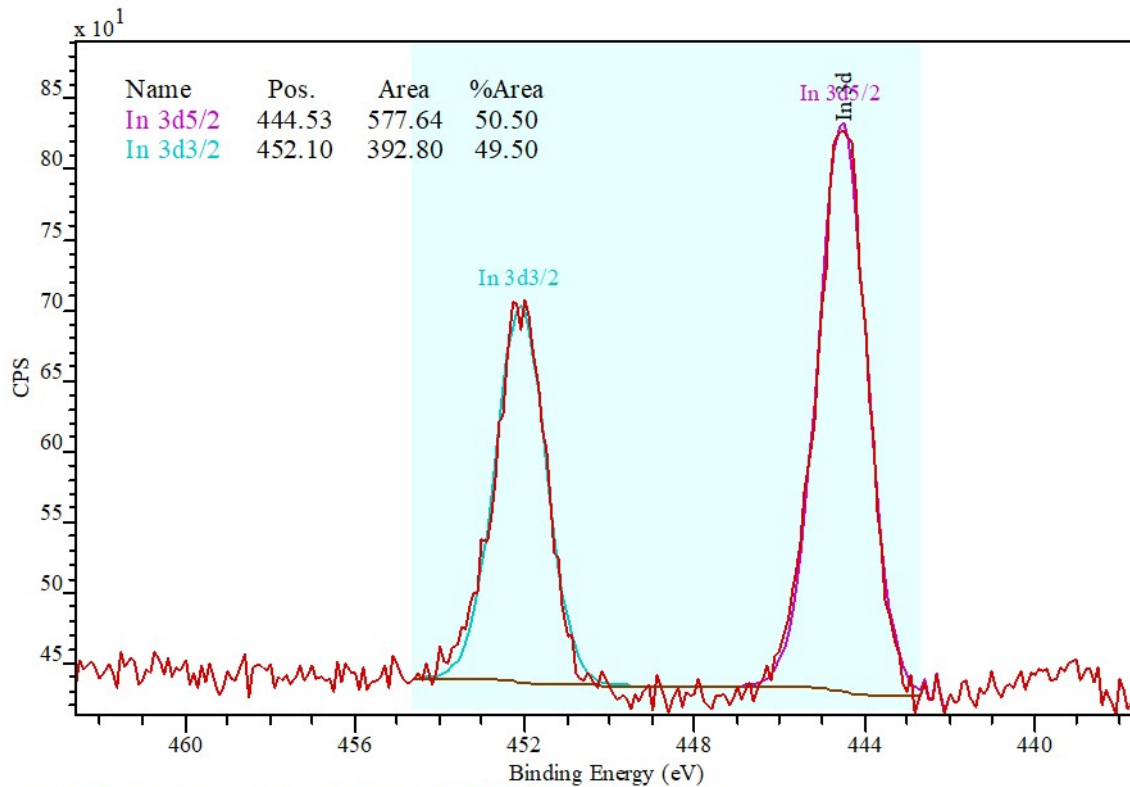
CasaXPS (This string can be edited in CasaXPS.DEF/PrintFootNote.txt)

Sn3d 3



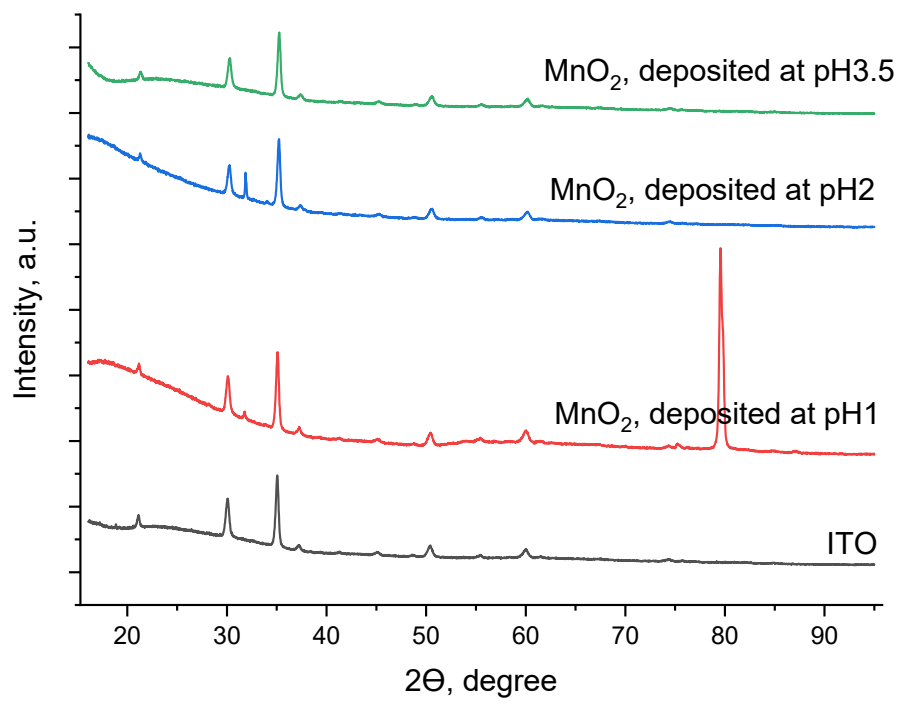
CasaXPS (This string can be edited in CasaXPS.D EF/PrintFoot Note.txt)

In3d 4



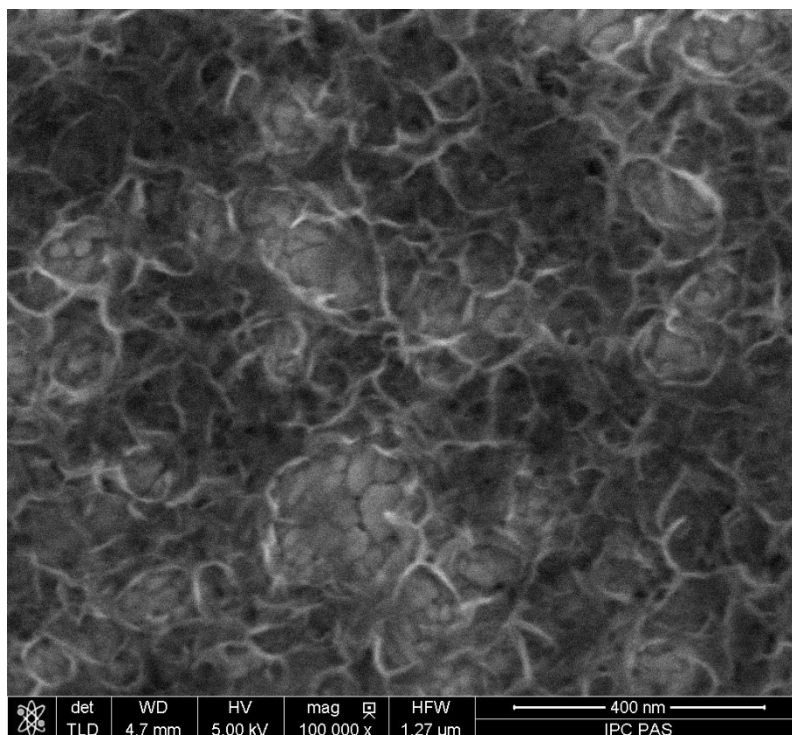
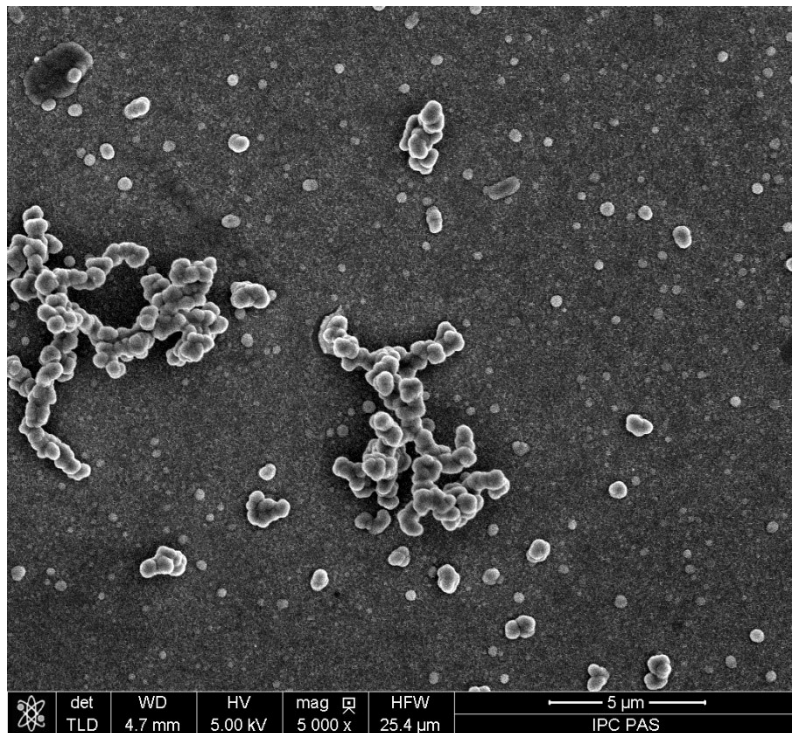
CasaXPS (This string can be edited in CasaXPS.D EF/PrintFoot Note.txt)

XRD

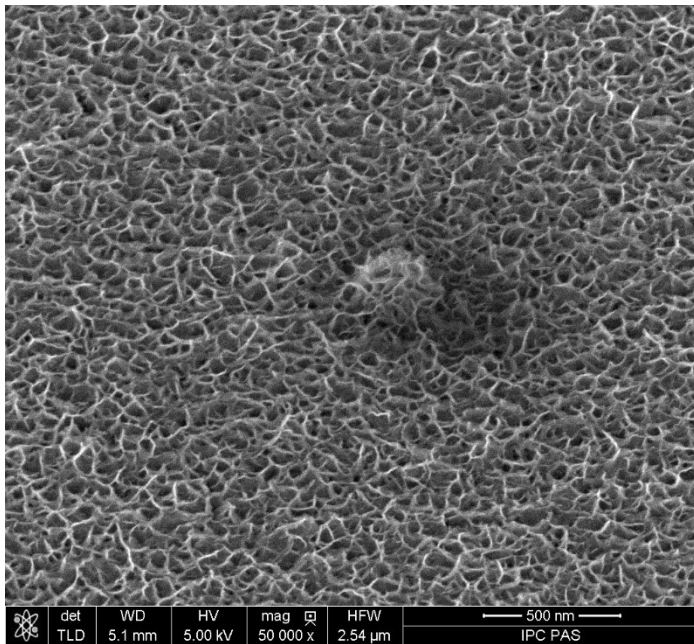


Additional SEM images

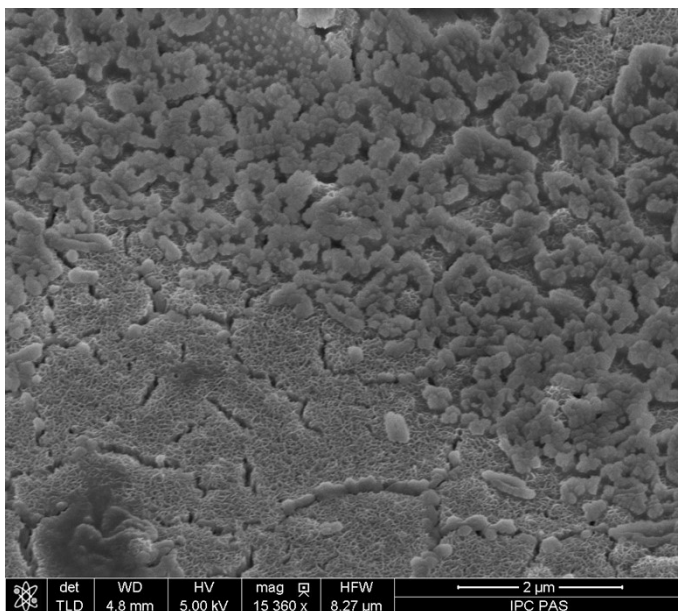
pH1_CV_60

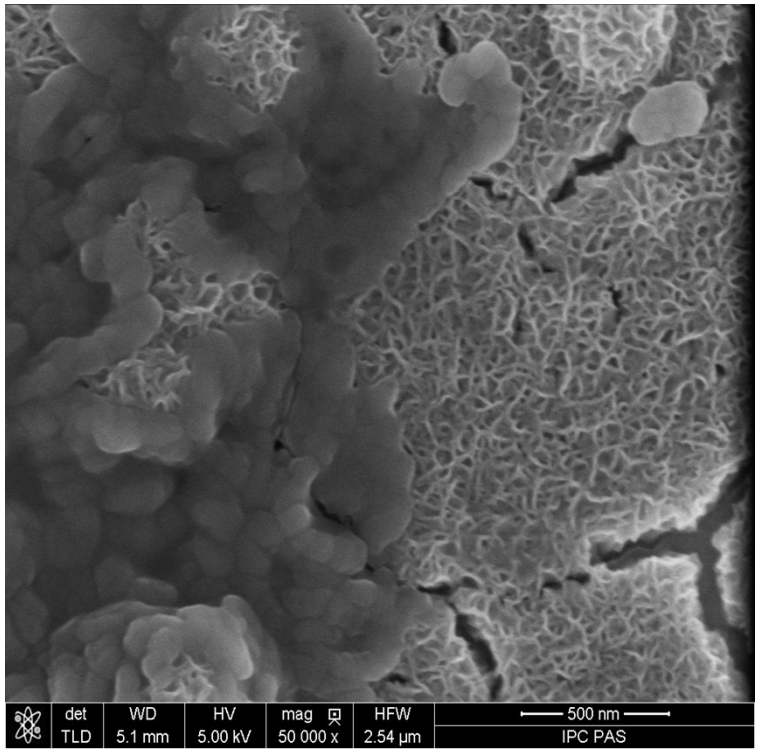


pH1_CV_60_thicker

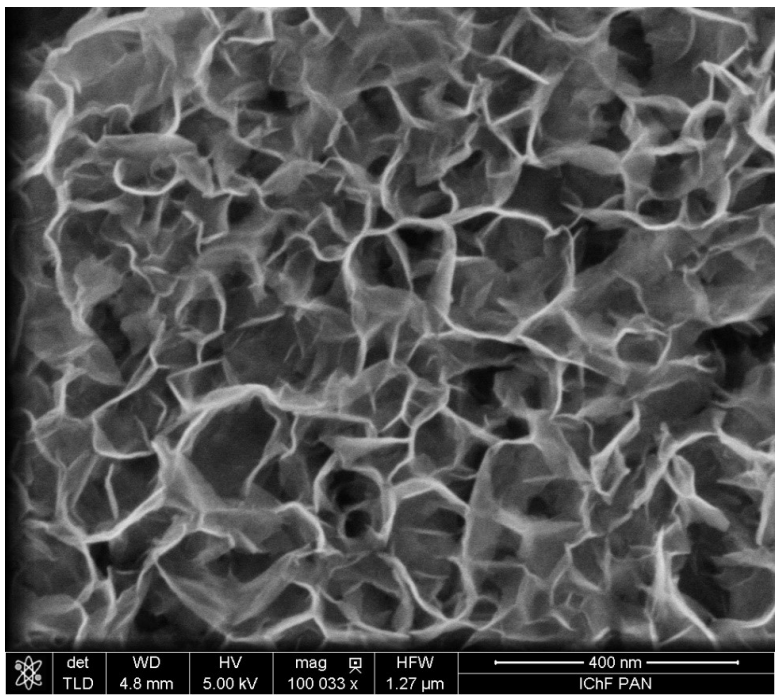


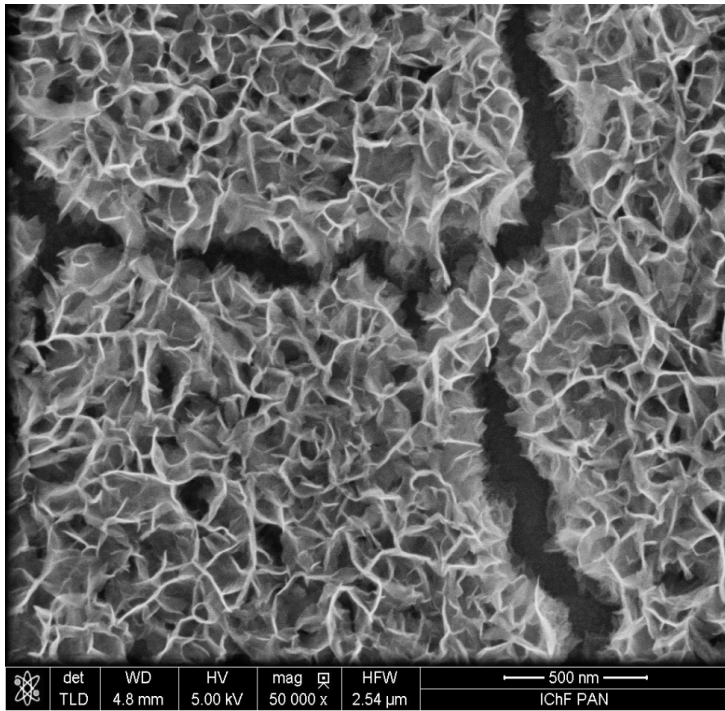
pH1_CA_60



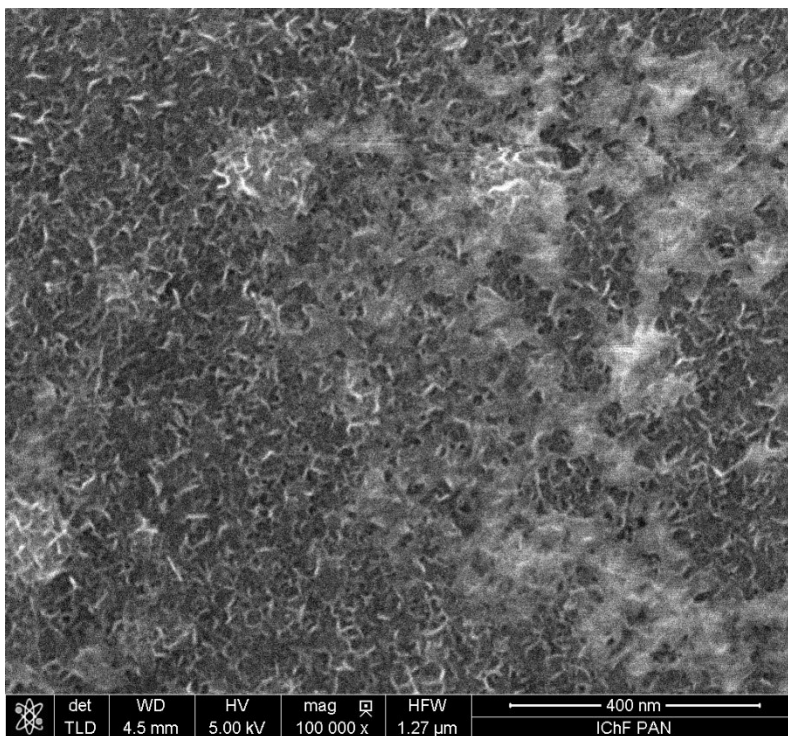


pH3.5_CV_90

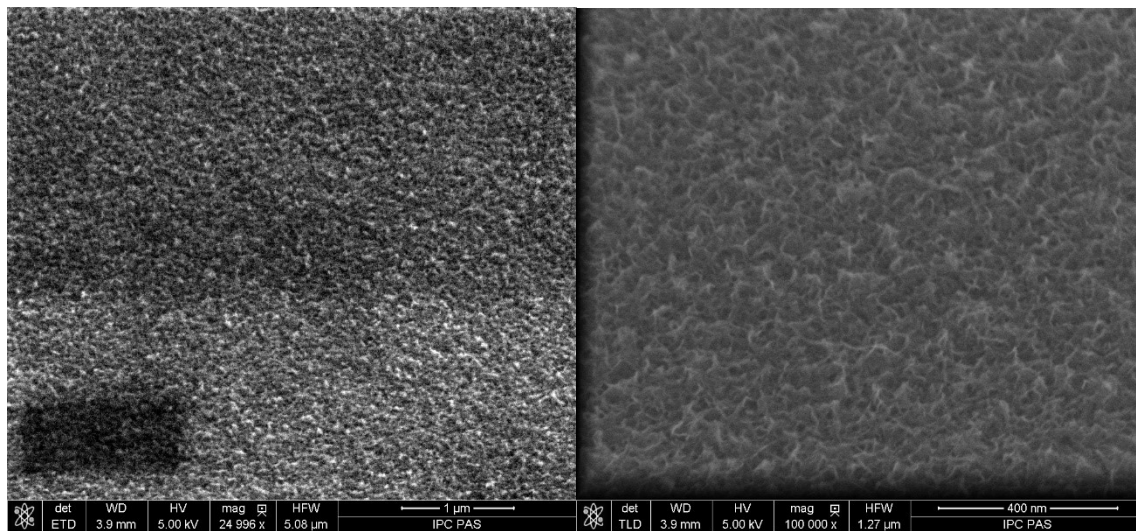




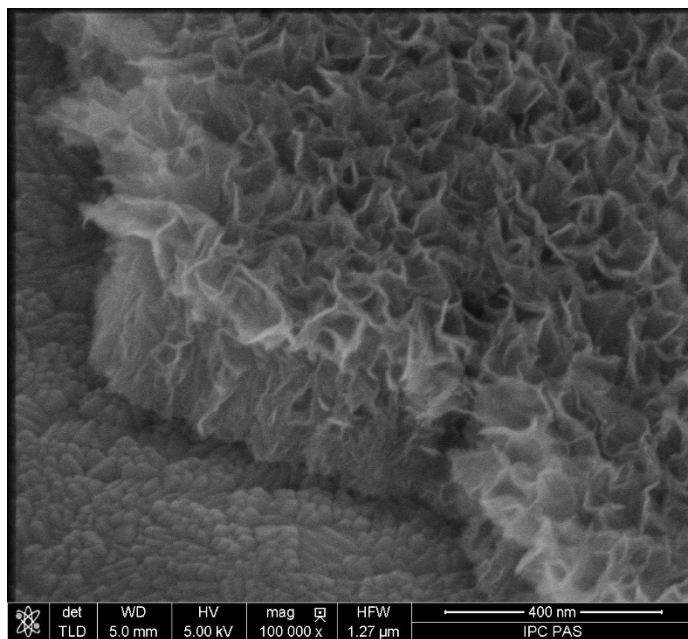
pH3.5_CA_90



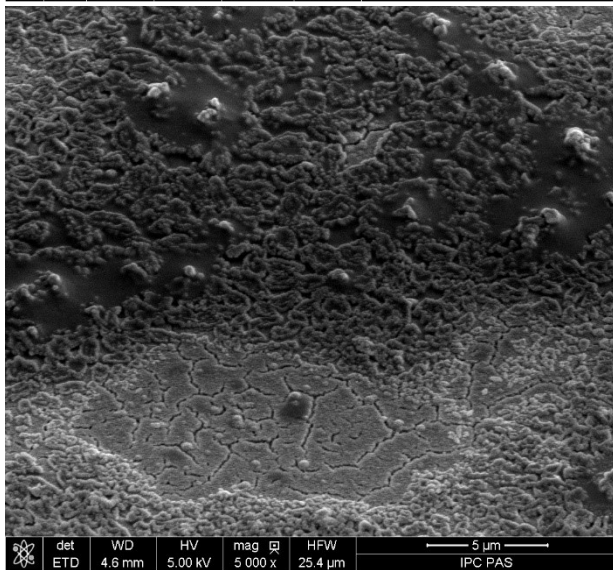
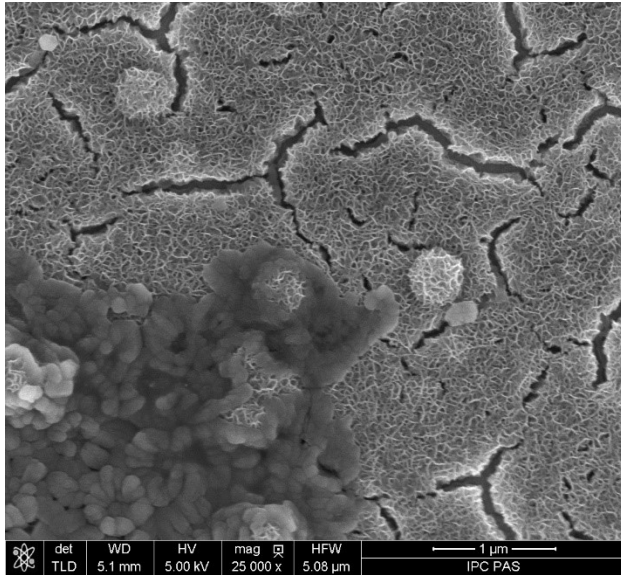
pH3.5_CV_60

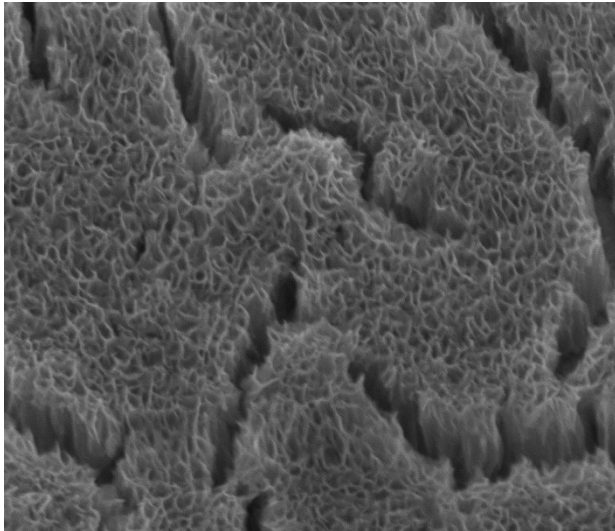


pH2_CV_60



pH1_CA_60





	det	WD	HV	mag	□	HPW	500 nm
	TLD	4.8 mm	5.00 kV	50 000 x		2.54 μm	IPC PAS