

Figure S1: MALDI-TOF mass spectra from zebrafish tissues exposed to PFOA solution in the positive ion mode (a-d: exposure group; e-h: control group). The mass spectrum was from an average over the tissue area.

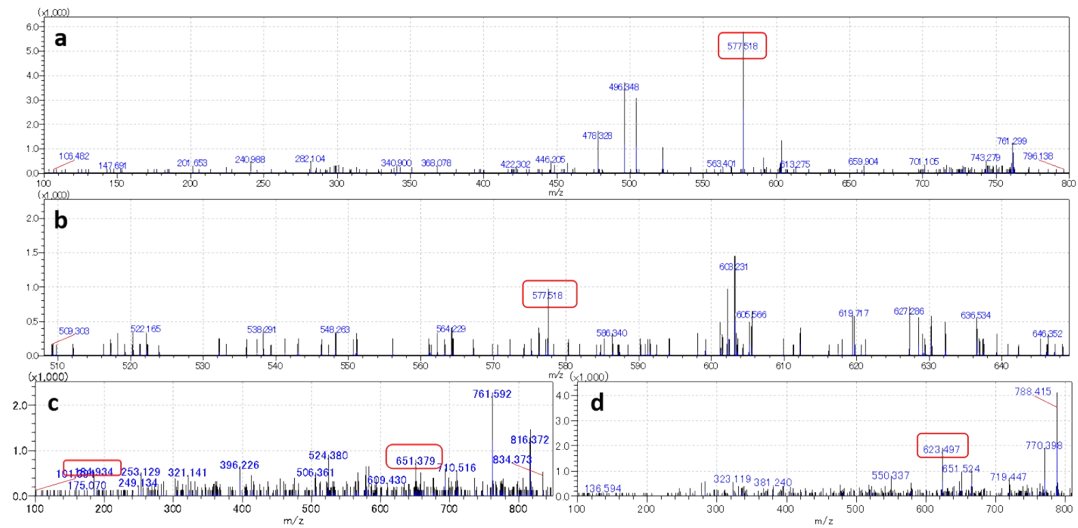


Figure S2: MALDI-MS/MS spectra of peaks at (a) m/z 760.585 acquired from PC (32:1) standard; (b) 760.587, (c) 834.602, and (d) 806.568 acquired from a zebrafish tissue. The red circle shows fragmented ion peaks from the neutral loss of PHOSPHOCHOLINE (NL183Da).

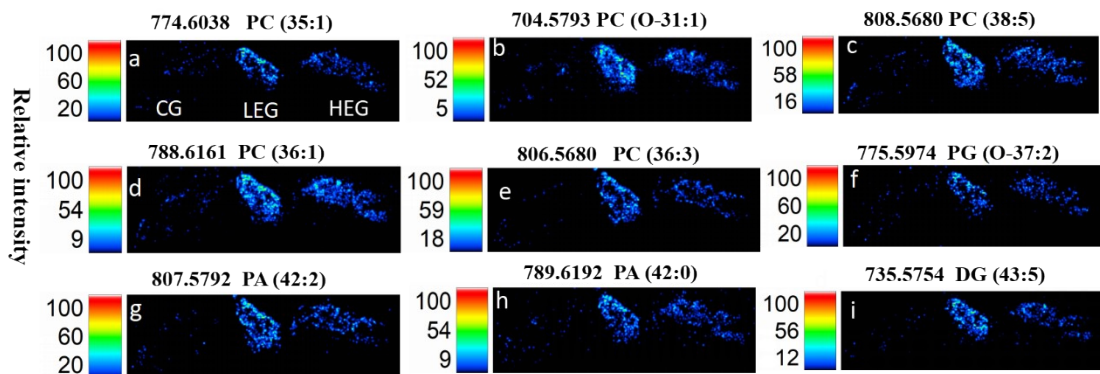


Figure S3. Visual distribution of phospholipids in zebrafish liver after PFOA exposure and control group, a single m/z value was indicated for each images. (CG: control group; LEG: low-exposure group; HEG: high-exposure group).

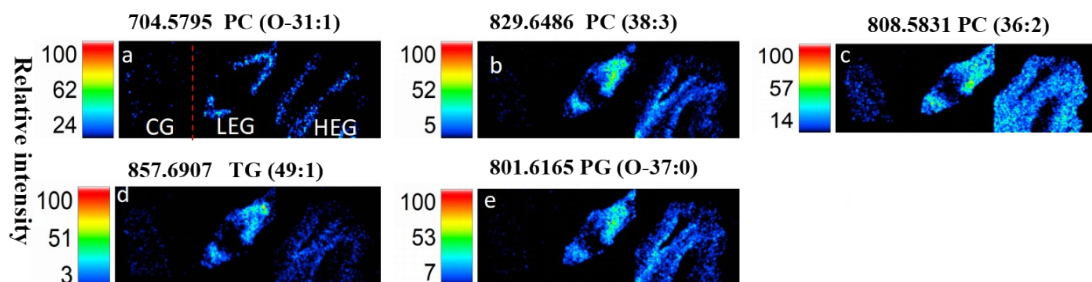


Figure S4. Visual distribution of phospholipids in zebrafish intestine after PFOA exposure and control group, a single m/z value was indicated for each images.

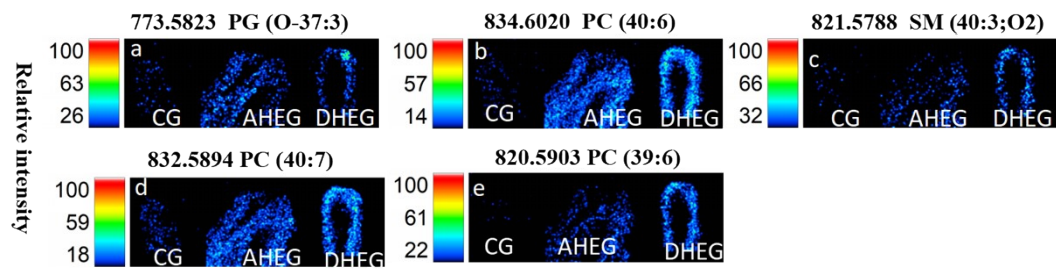


Figure S5. IMS of zebrafish intestine after PFOA exposure and control group during accumulation and depuration phase in the high-exposure group.