

A fluorinated greenhouse gases sensor based on N-doped tin oxide materials

Hu Meng ^a, Zhiwen Liu ^a, Xiaoxin Wang ^a and Liang Feng* ^a

^a Department of Instrumentation and Analytical Chemistry, CAS Key Laboratory of Separation Science for Analytical Chemistry, Dalian Institute of Chemical Physics, Chinese Academy of Sciences, Dalian 116023, P. R. China

**E-mail: fengl@dicp.ac.cn*

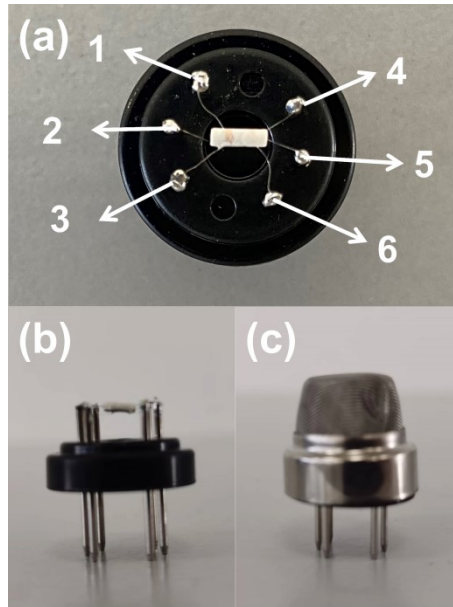


Fig. S1. The structure of self-made sensor and the gas sensing test device. (a) The top view of the sensor and the annotations of wire interface, (b) the side view of the sensor, (c) the side view of the sensor with cover.

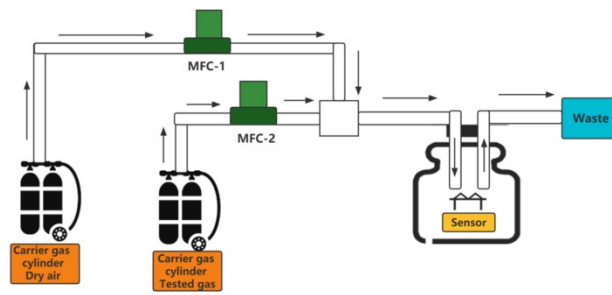


Fig. S2. The detailed gas system design of dynamic gas sensing.

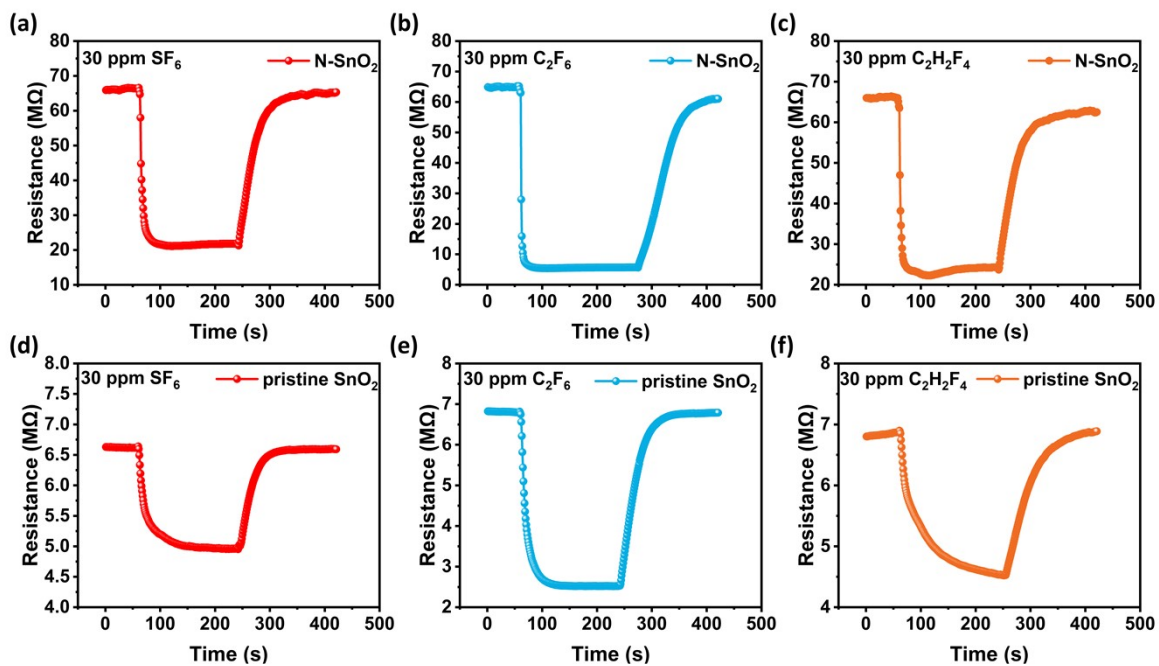


Fig. S3. The real resistance response-recovery curve of N-SnO₂ and pristine SnO₂ to 30ppm (a,d)SF₆, (b,e)C₂F₆ and (c,f)C₂H₂F₄ at 200 °C.

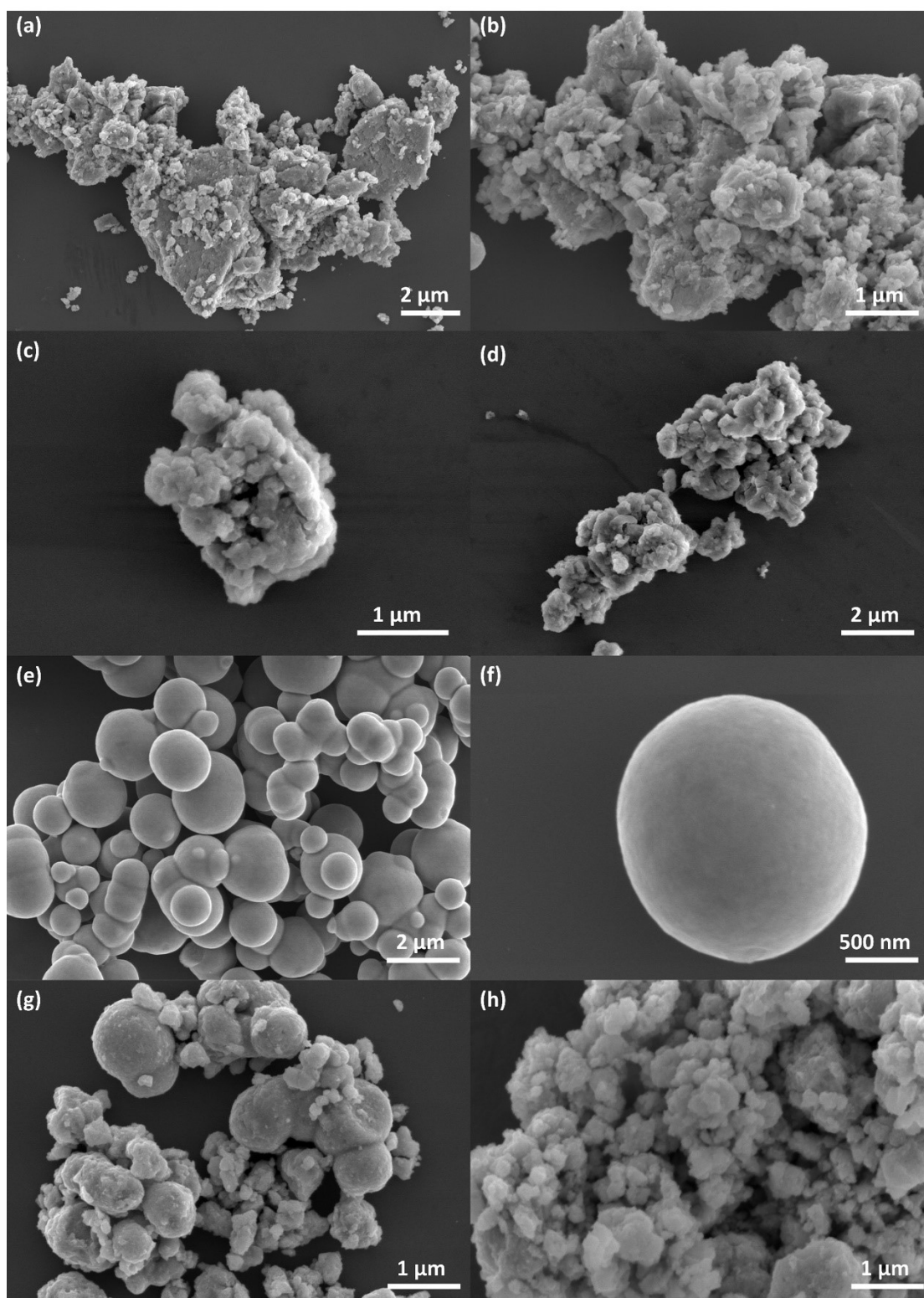


Fig. S4. (a,b)SEM images of N(2), (c,d)SEM images of N(3), (e,f)SEM images of N(4), (g)SEM images of N(5) and (h)SEM images of N(6).