

Supplementary information

Characterization of black carbon and silica nanoparticles interactions with human plasma proteins

Si-si Chen,^a Hong-juan Chen,^b Xue-wen Guo,^a Wei-juan Zheng^b and Hong-zhen Lian

*a,

^a *State Key Laboratory of Analytical Chemistry for Life Science, School of Chemistry & Chemical Engineering and Center of Materials Analysis, Nanjing University, Nanjing 210023, China*

^b *State Key Laboratory of Pharmaceutical Biotechnology, School of Life Science, Nanjing University, Nanjing 210023, China*

**Corresponding authors. State Key Laboratory of Analytical Chemistry for Life Science, School of Chemistry & Chemical Engineering and Center of Materials Analysis, Nanjing University, 163 Xianlin Avenue, Nanjing 210023, China. E-mail: hzlian@nju.edu.cn (H. Z. Lian).*

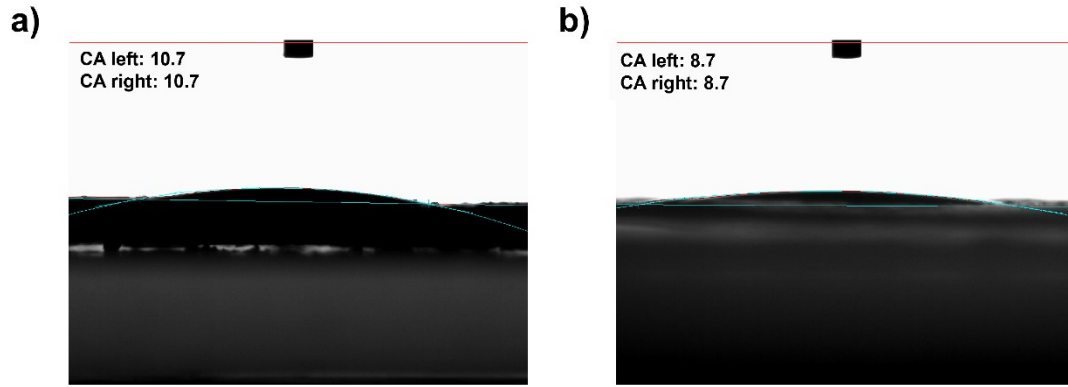


Fig. S1. Contact angles of BC NPs (a) and SiO₂ NPs (b) at 1000 ms after water droplet deposition.

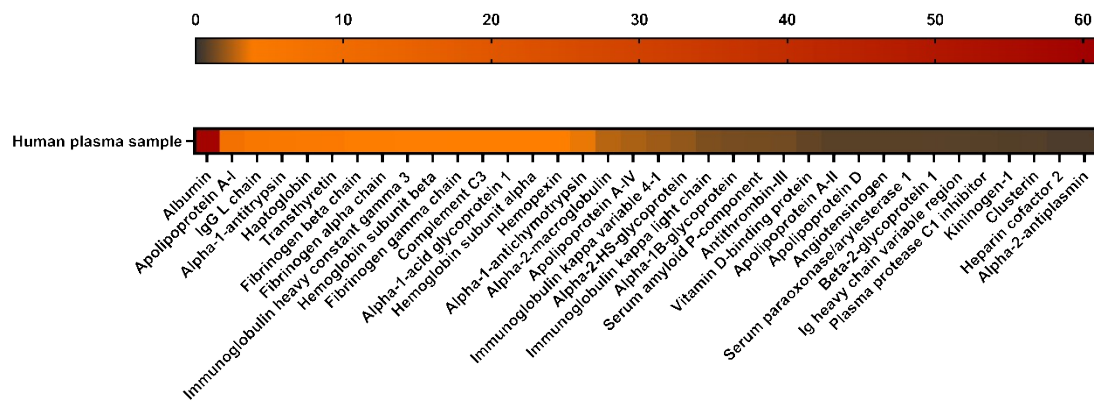


Fig. S2. Heat map of the major protein compositions of the human plasma sample.