

**Effects of long-term and incremental exposure to toxic pollutants on the current
generation and microbial communities of electrochemically active bacteria**

Yue Yi^{a,b}, Yuxin Feng^{a,b}, Baoguo Wang^{a,b}, Zhipeng Mao^{a,b}, Zika Hao^{a,b}, Tianbo Yi^c,
Aiqin Luo^{a,b,*}

^a School of Life Science, Beijing Institute of Technology, Beijing 100081, China

^b Key Laboratory of Molecular Medicine and Biotherapy, Ministry of Industry
and Information Technology, Beijing Institute of Technology, Beijing 100081, China

^c School of Mechanical and Materials Engineering, North China University of
Technology, Beijing 100144, China

* Corresponding author: Aiqin Luo, Prof., School of Life, Beijing Institute of Technology, 5
Zhongguancun South Street, Haidian DIST, Beijing 100081, China.
Tel./fax: +86-10-68914597; e-mail: bitluo@bit.edu.cn

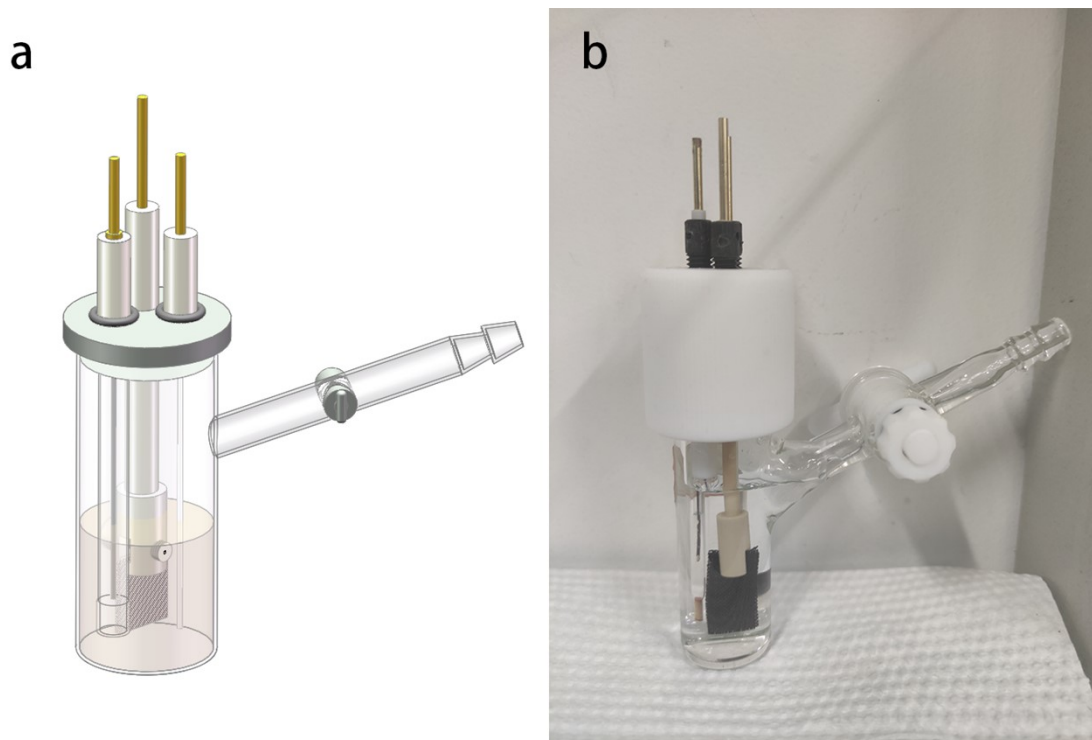


Figure S1 The schematic diagram (a) and picture (b) of the MESs.

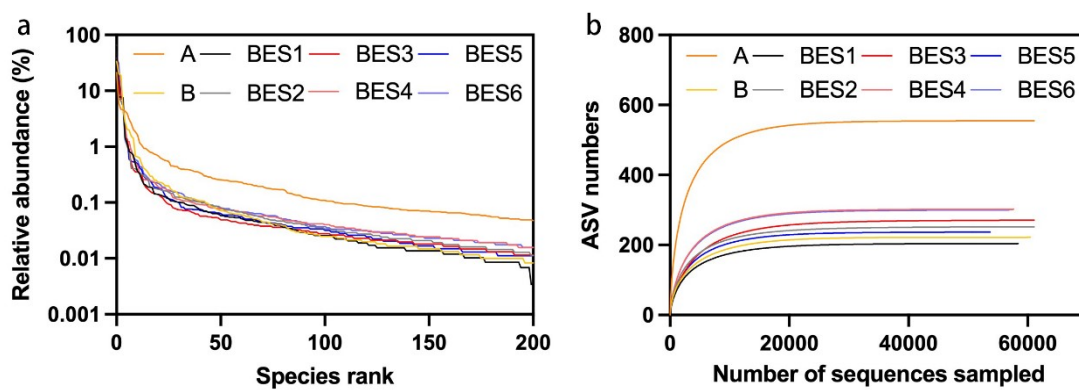


Figure S2 The rank abundance curve (a) and rarefaction curve (b).

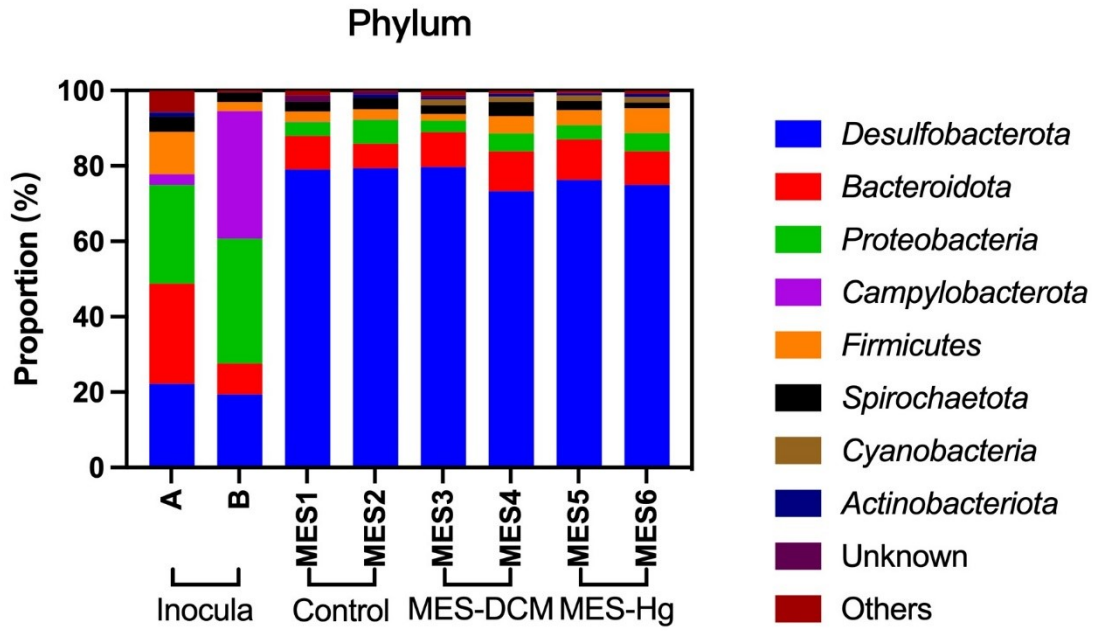


Figure S3 The microbial communities of the eight samples at phylum level.

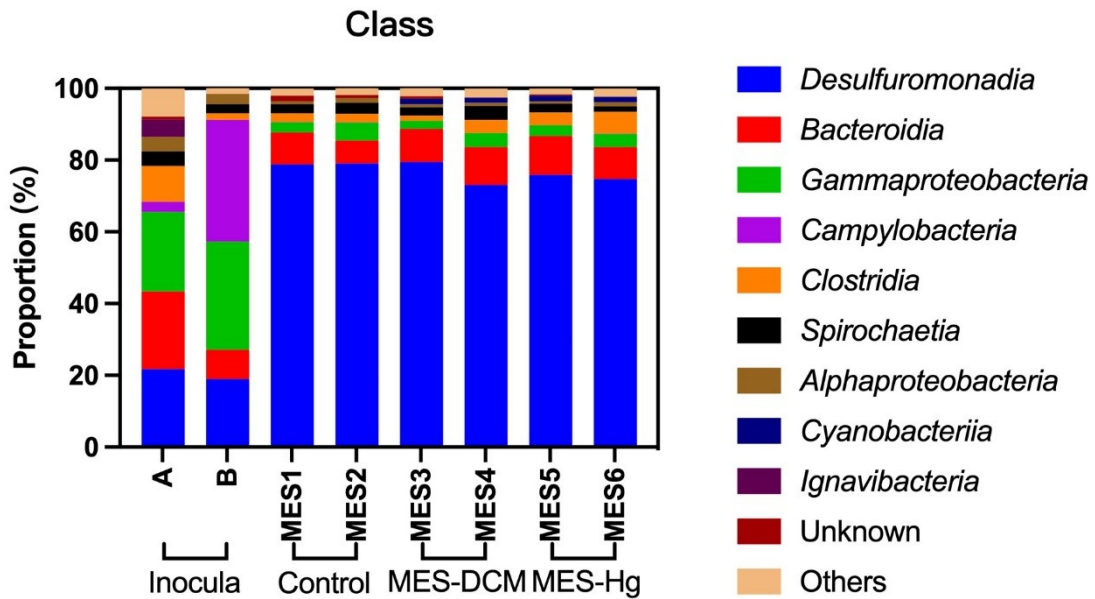


Figure S4 The microbial communities of the eight samples at class level.

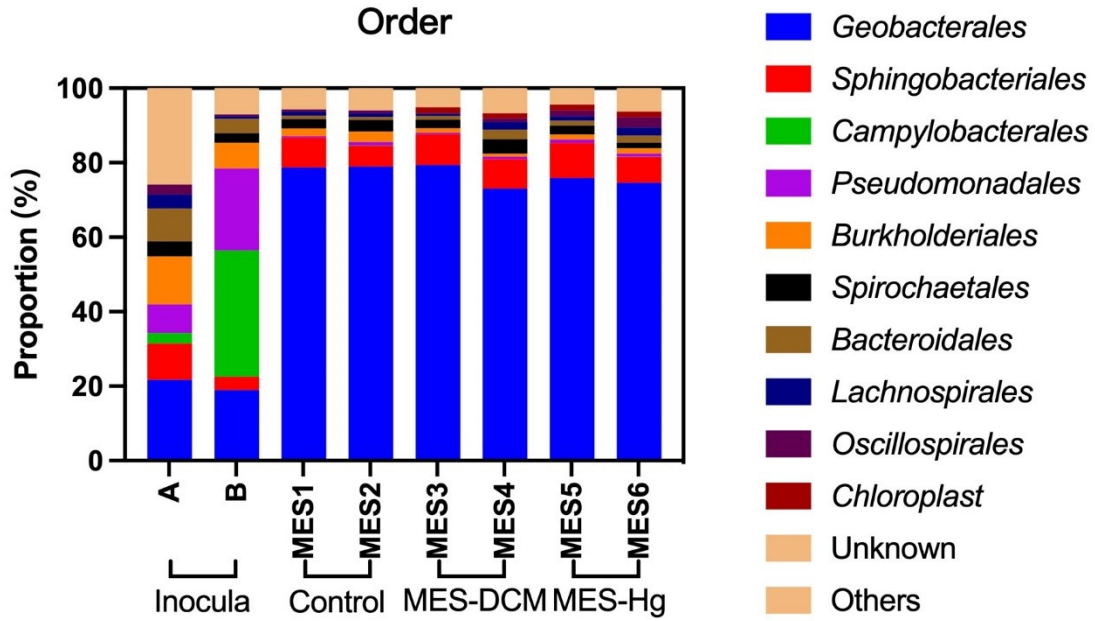


Figure S5 The microbial communities of the eight samples at order level.

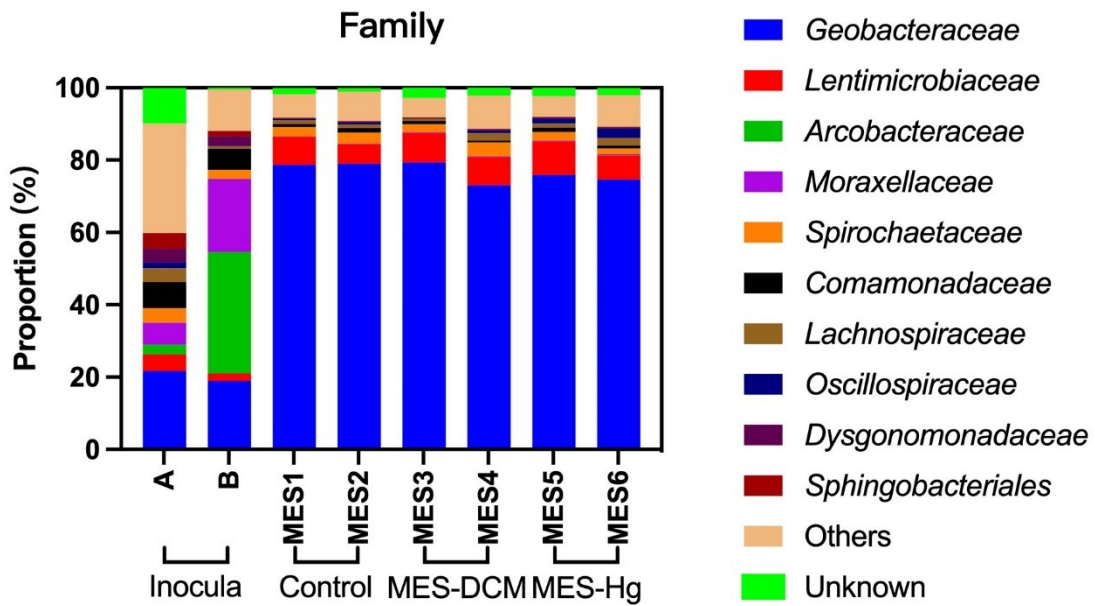


Figure S6 The microbial communities of the eight samples at family level.

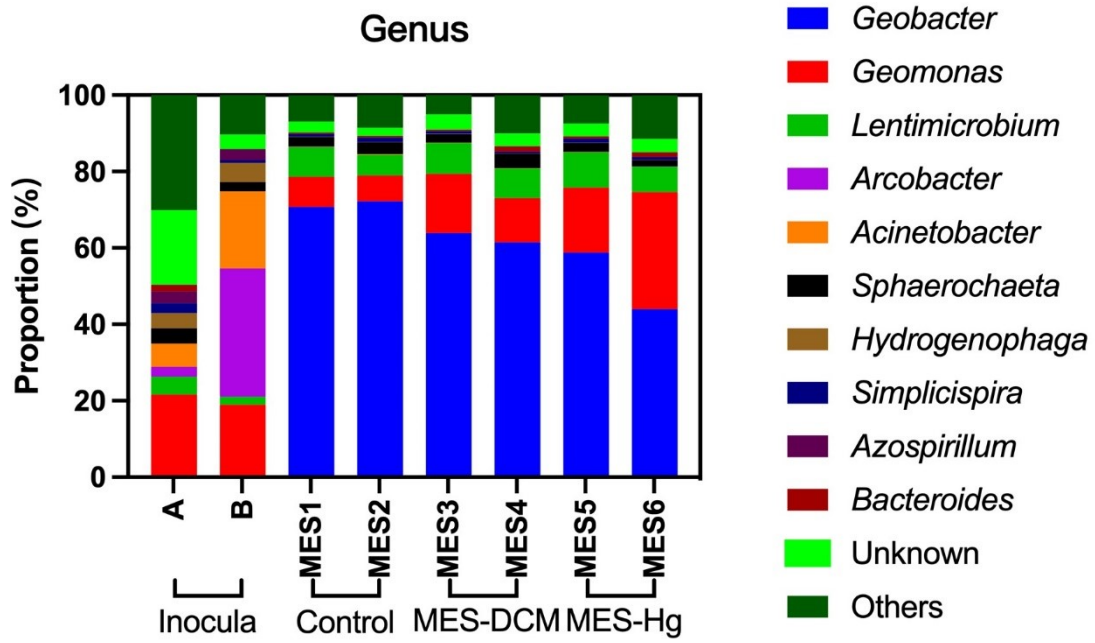


Figure S7 The microbial communities of the eight samples at genus level.

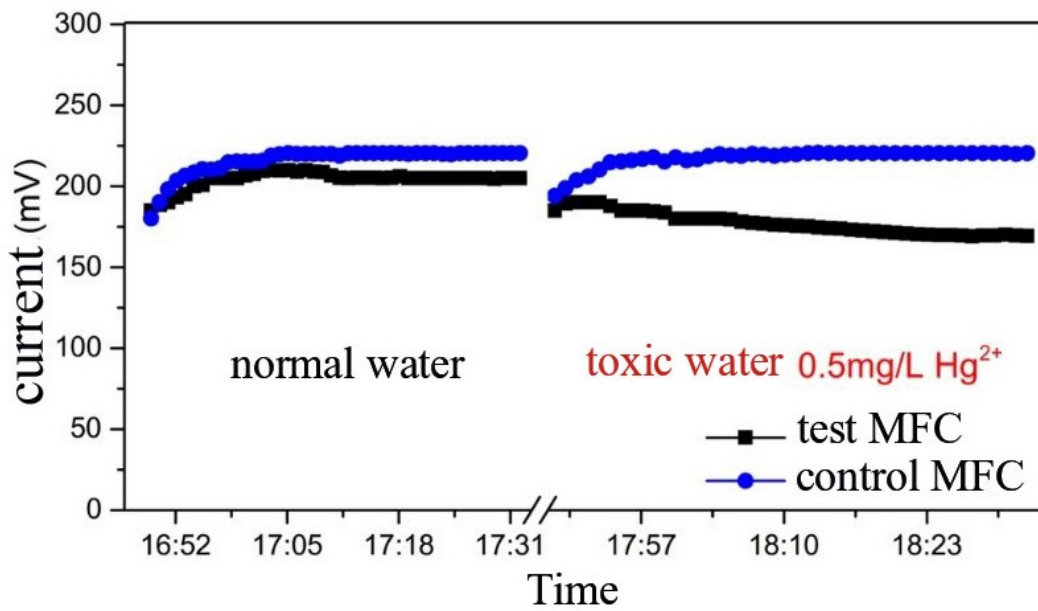


Figure S8 The inhibition of Hg(II) on EAB

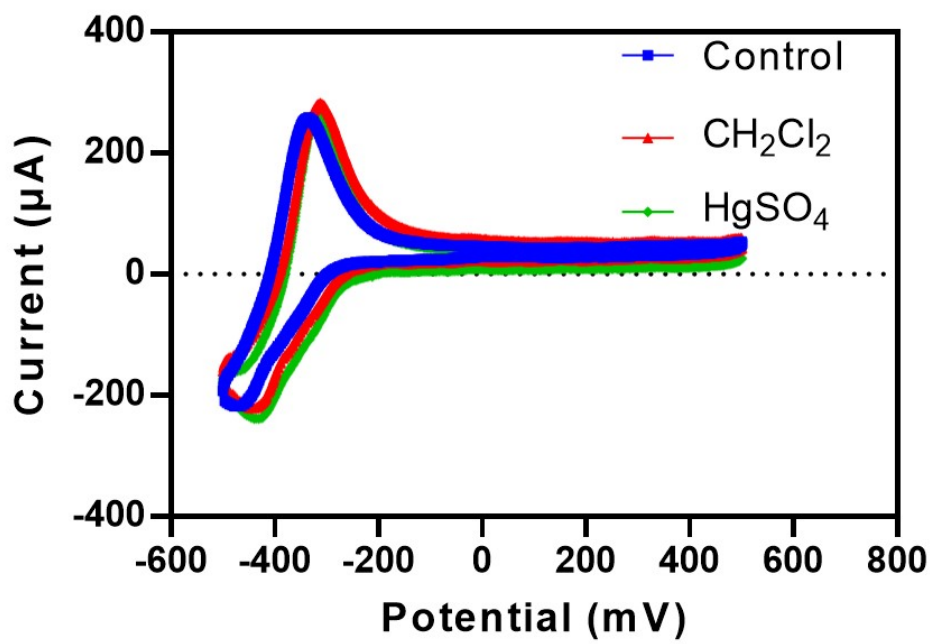


Figure S9 non-turnover CV tests