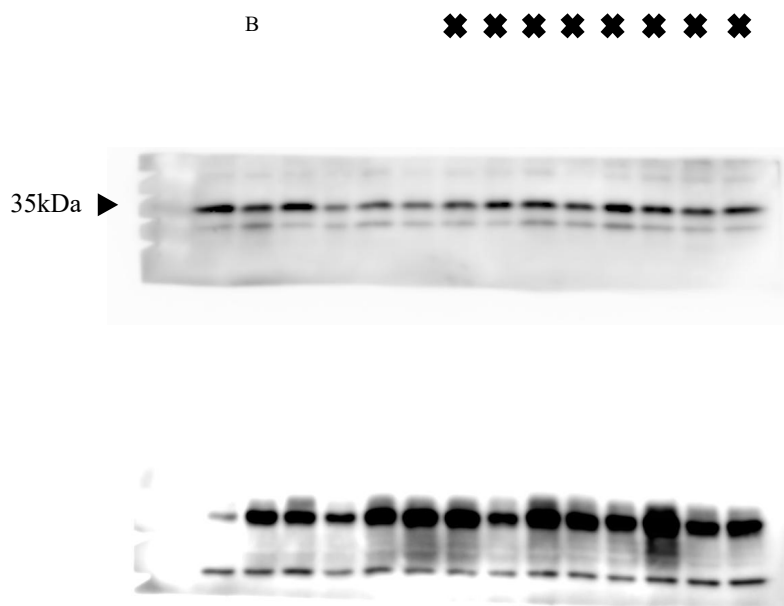
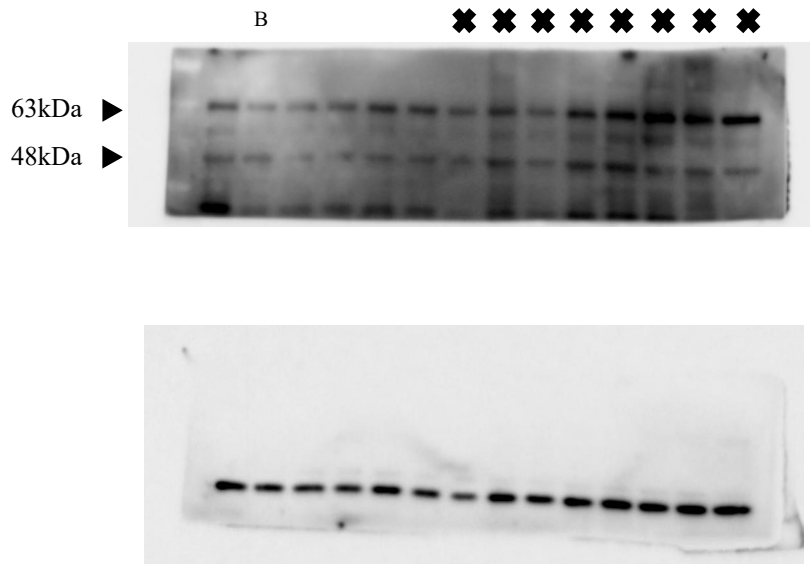
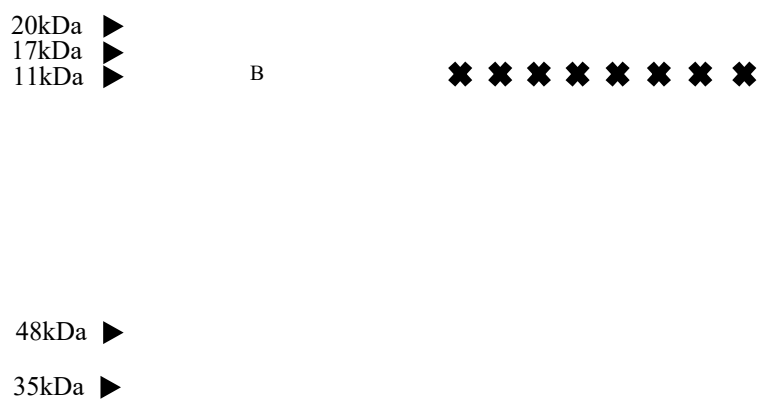


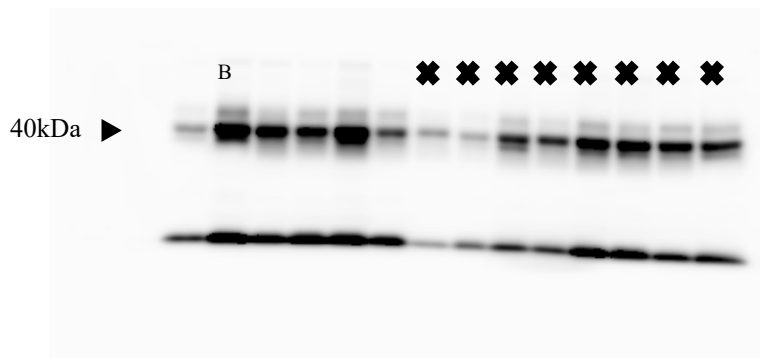
**Supplementary Figure 1**

**(a) Raw images of Occludin (63kDa) and GAPDH (35kDa)**

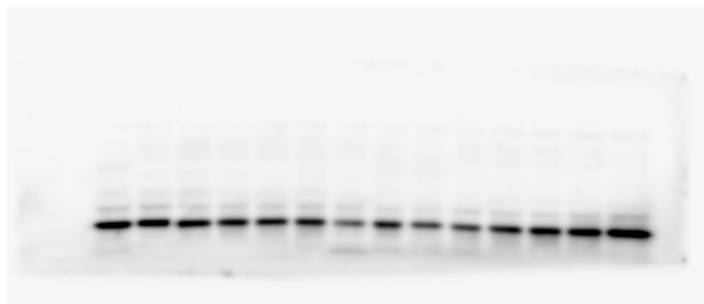


**(b) Raw images of Claudin-1 (19kDa) and GAPDH (35kDa)**

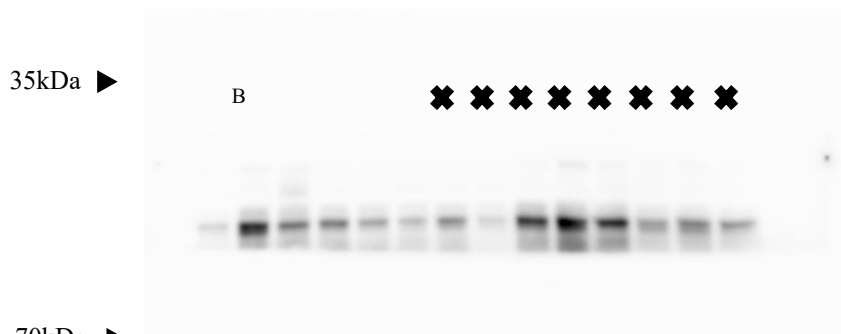




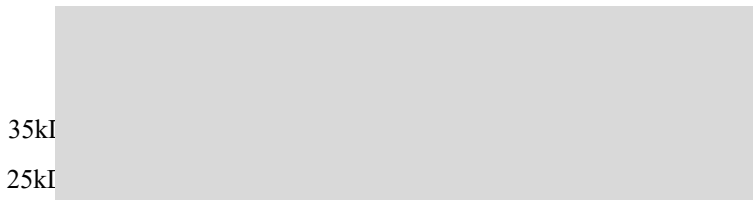
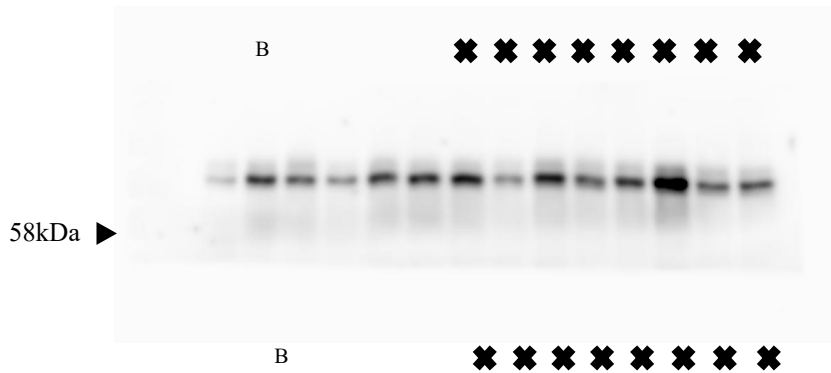
**(c) Raw images of P-IκBα (40kDa) and GAPDH (35kDa)**



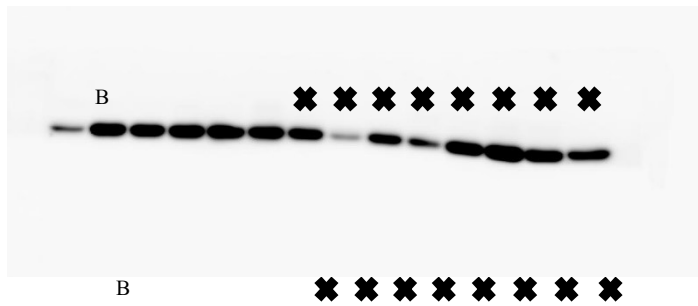
B X X X X X X X X



**(d) Raw images of COX2 (70kDa) and GAPDH (35kDa)**



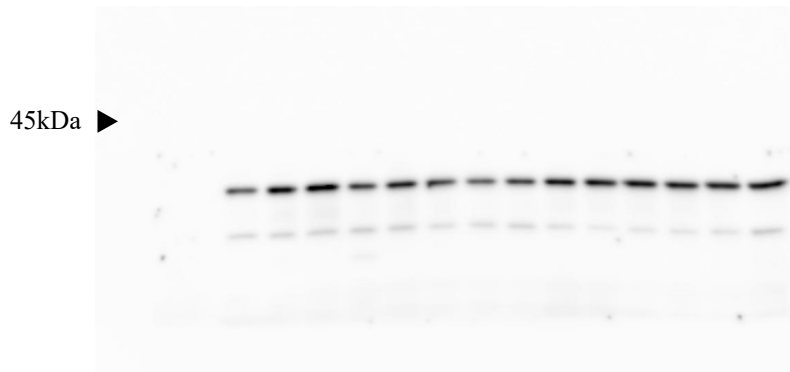
(e) Raw images of T-bet (58kDa) and GAPDH (35kDa)



(f) Raw images of GATA3 (45kDa) and GAPDH (35kDa)

35kDa ▶

35kDa ▶



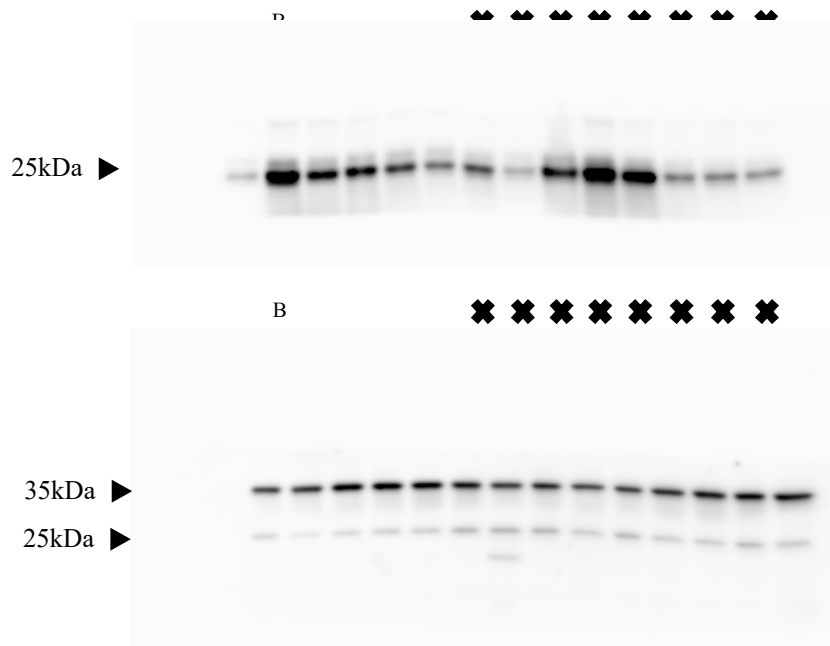
B

✕ ✕ ✕ ✕ ✕ ✕ ✕ ✕

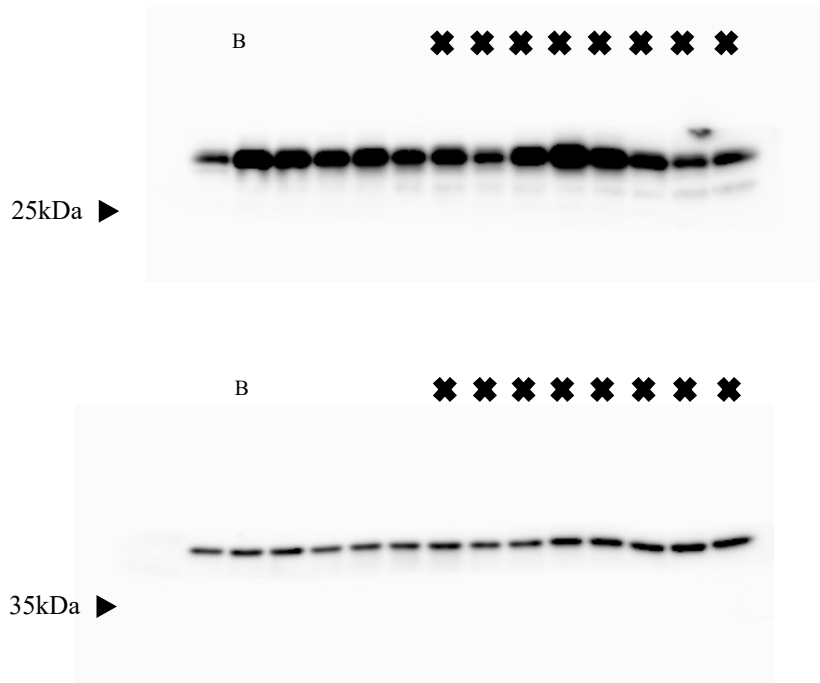
35kDa ▶



**(g) Raw images of IFN- $\gamma$  (25kDa) and GAPDH (35kDa)**

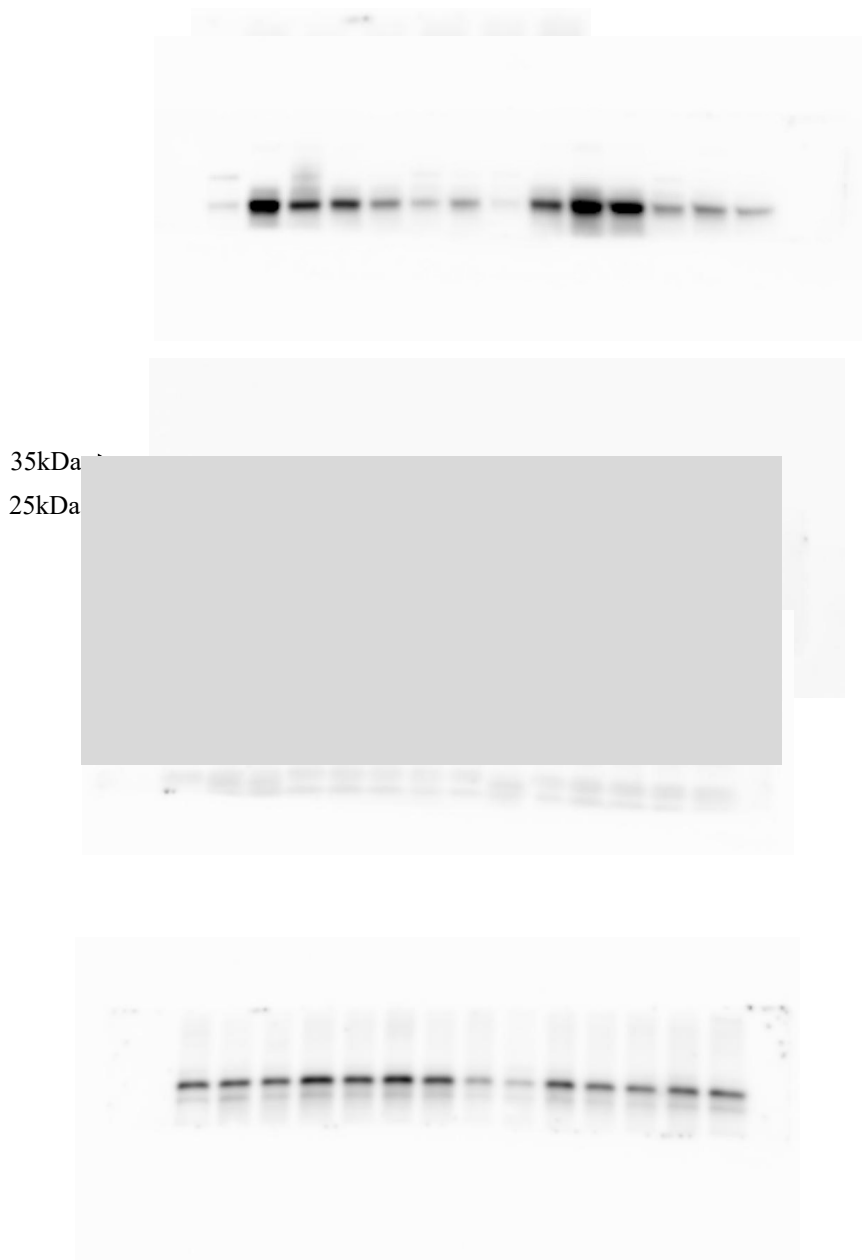


**(h) Raw images of TGF- $\beta$ 1 (25kDa) and GAPDH (35 kDa)**



**(i) Raw images of Smad7 (60kDa) and GAPDH**





**(j) Raw images of p-Smad2/3 (55kDa) and GAPDH (35kDa)**

**(k) Raw images of Smad4 (60kDa) and GAPDH (35kDa)**

55kDa ► B                    ✕ ✕ ✕ ✕ ✕ ✕ ✕ ✕

60kDa ►

B                    ✕ ✕ ✕ ✕ ✕ ✕ ✕ ✕

Fig. S1 Raw gel images of western blot for (a) Occludin, (b) Claudin-1 (c) P-I $\kappa$ B $\alpha$ , (d) COX2, (e) T-bet (f) GATA3, (g) IFN- $\gamma$  (h) TGF- $\beta$ 1, (i) Smad7 (j) p-Smad2/3, (k) Smad4

Lanes A-F represent control, DSS, sulfasalazine, 0.1% NAG, 0.3% NAG, and 0.3% NAG-D group, respectively. Lanes not included are denoted by "X"

A : Control, B: DSS, C: Sulfasalazine, D: 0.1% NAG, E: 0.3% NAG, F: 0.3% NAG-D