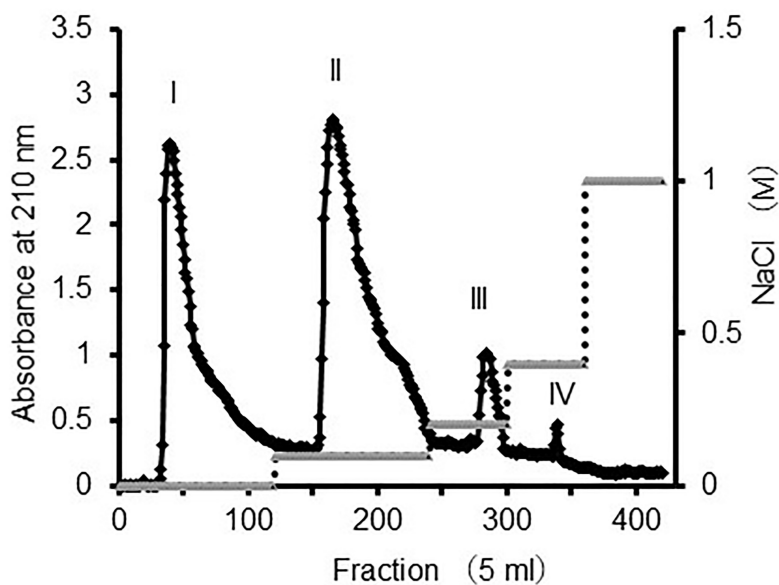
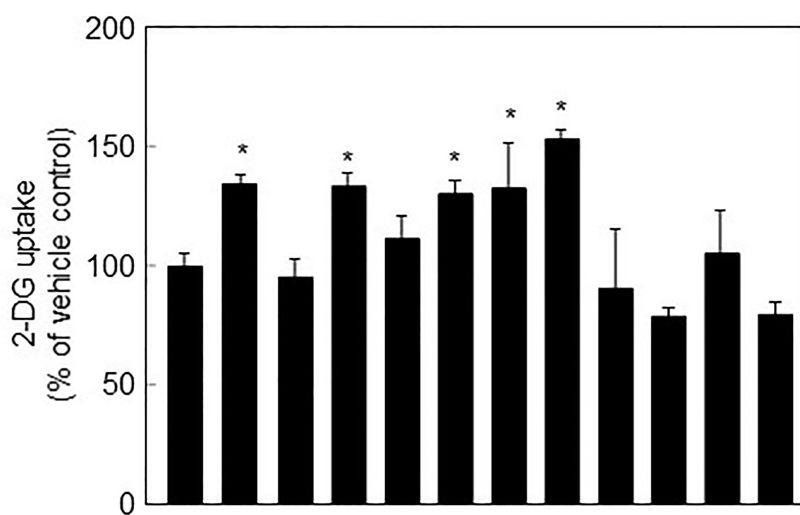


A



B



Insulin (nM)	-	100	-	-	-	-	-	-	-	-	-
MPI-L (mg/mL)	-	-	1.0	2.0	-	-	-	-	-	-	-
Fraction I (mg/mL)	-	-	-	-	1.0	2.0	-	-	-	-	-
Fraction II (mg/mL)	-	-	-	-	-	-	1.0	2.0	-	-	-
Fraction III (mg/mL)	-	-	-	-	-	-	-	-	1.0	2.0	-
Fraction IV (mg/mL)	-	-	-	-	-	-	-	-	-	-	1.0
											2.0

**Supplementary Figure S2 Effect of fraction II on glucose uptake in L6 myotubes**

(A) MPI-L was fractionated on DEAE anion exchange column chromatography. (B) Fraction II at 1.0 and 2.0 mg/mL significantly increased glucose uptake in L6 myotubes. Data are presented as the means  $\pm$  SD (n=3). An asterisk indicates statistical significance from the control treatment ( $p < 0.05$ ) by Dunnett's test.