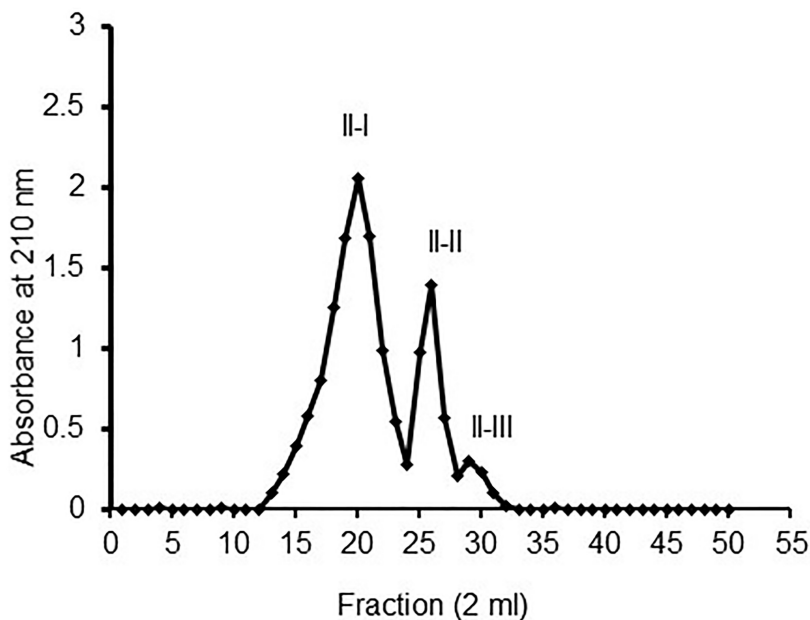
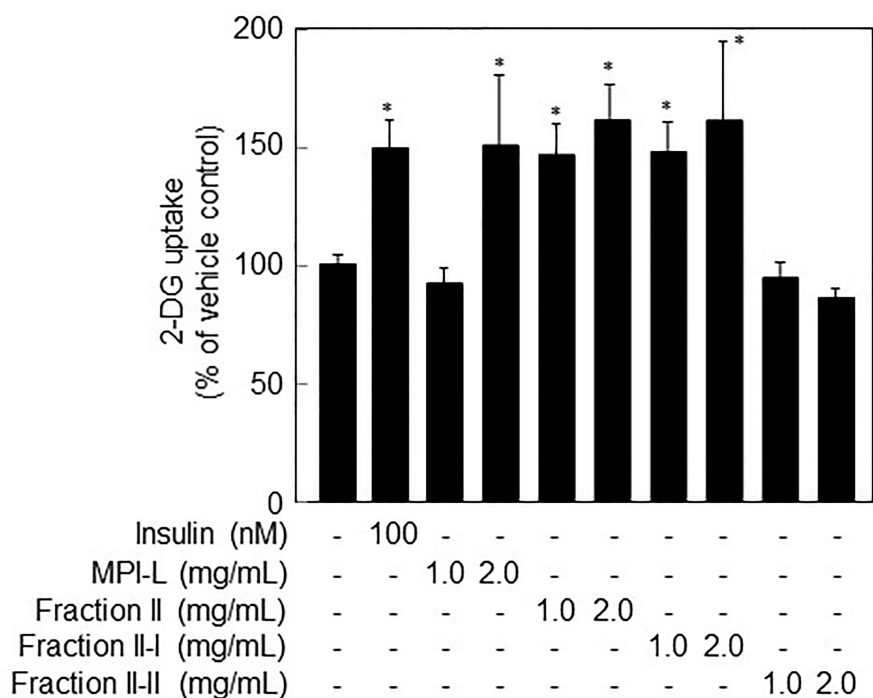


A



B



Supplementary Figure S3 Effect of fraction II-I on glucose uptake in L6 myotubes

(A) Fraction II was subjected to a gel filtration chromatography. (B) Fraction II-I at 1.0 and 2.0 mg/mL significantly increased glucose uptake in L6 myotubes. Data are presented as the means \pm SD (n=3). An asterisk indicates statistical significance from the control treatment ($p < 0.05$) by Dunnett's test.