

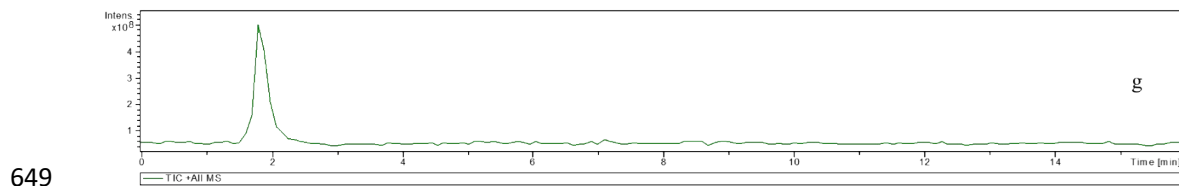
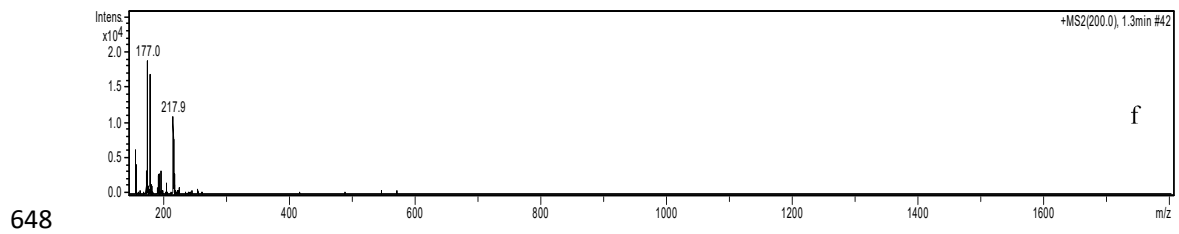
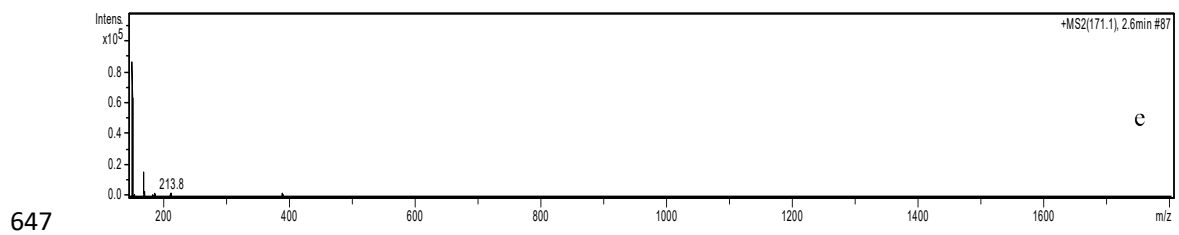
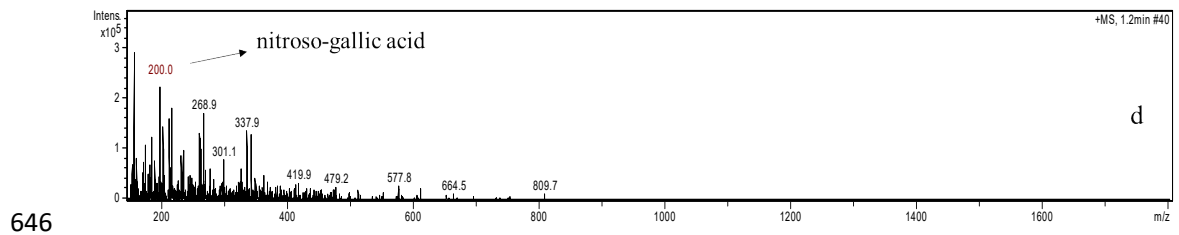
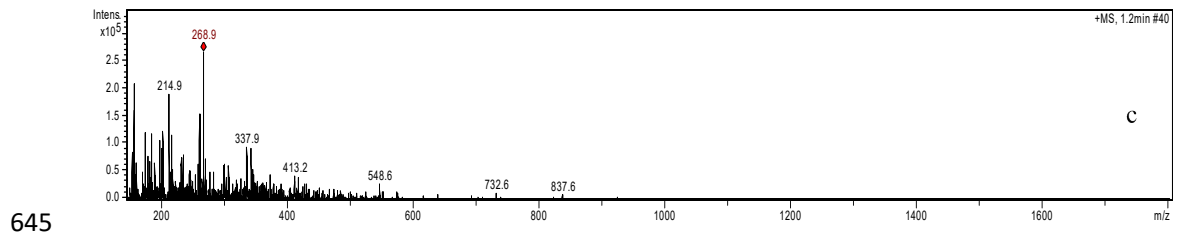
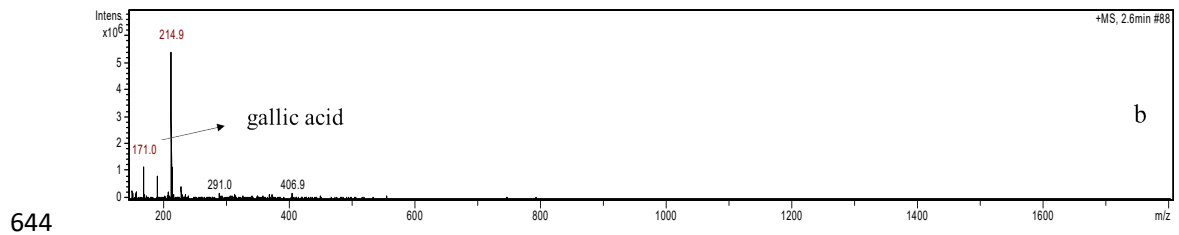
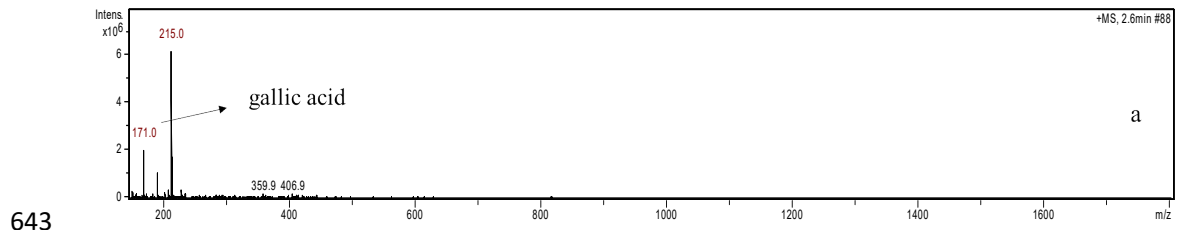
623 **Figure Captions**

624 **Fig. S1** Primary and secondary mass spectra of gallic acid before and after reaction  
625 with nitrite. (a and c. the primary mass spectra before the reaction between gallic acid  
626 and nitrite, b and d. the MS spectra of gallic acid and nitrite after reaction, e. the  
627 secondary mass spectrum before the reaction of gallic acid and nitrite, f. the MS<sup>2</sup>  
628 spectra of gallic acid after reaction with nitrite, g. the total ion chromatograms of  
629 gallic acid after reaction with nitrite.)

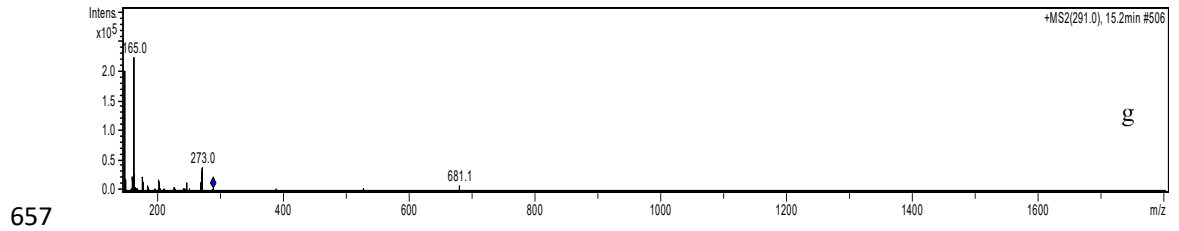
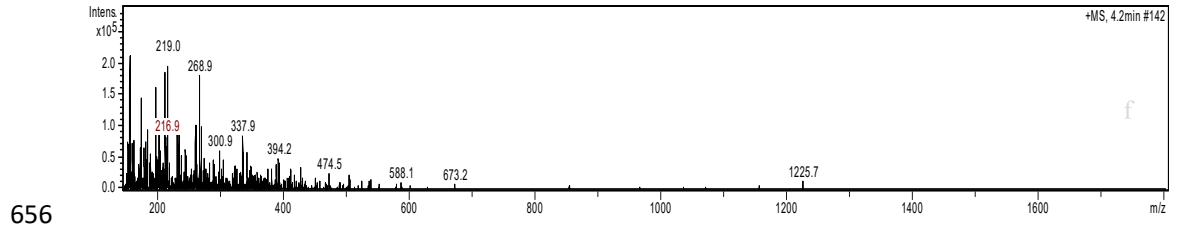
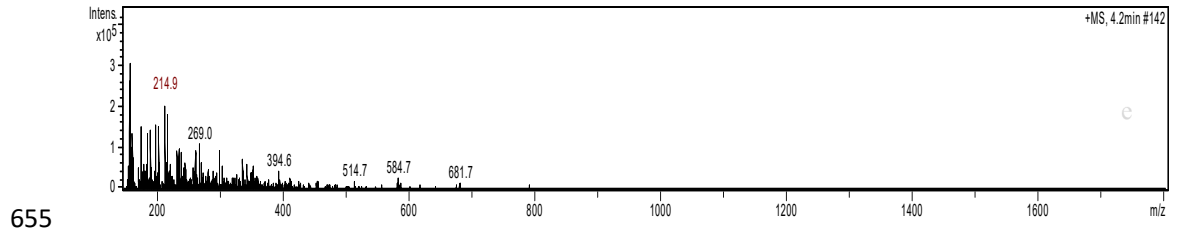
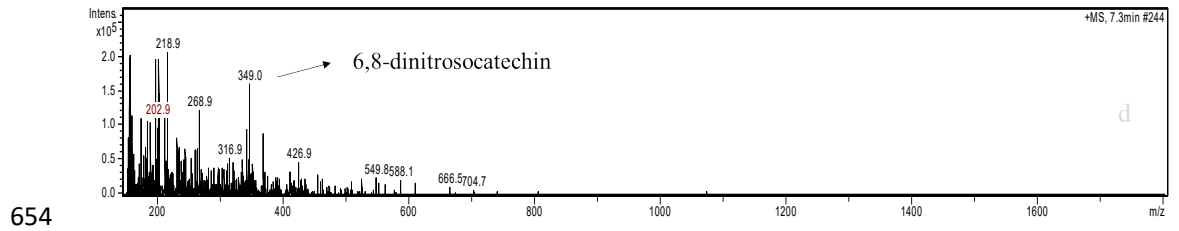
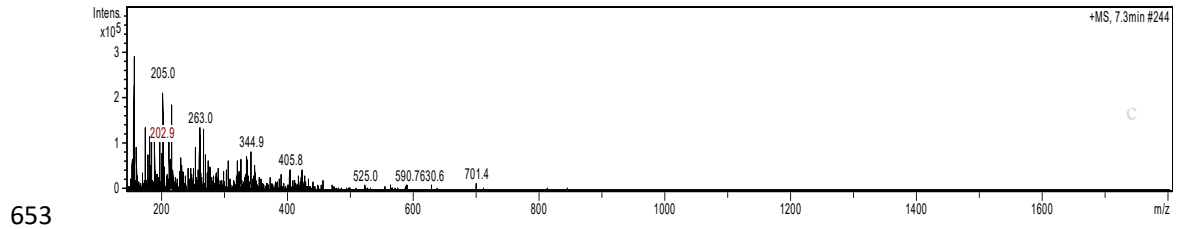
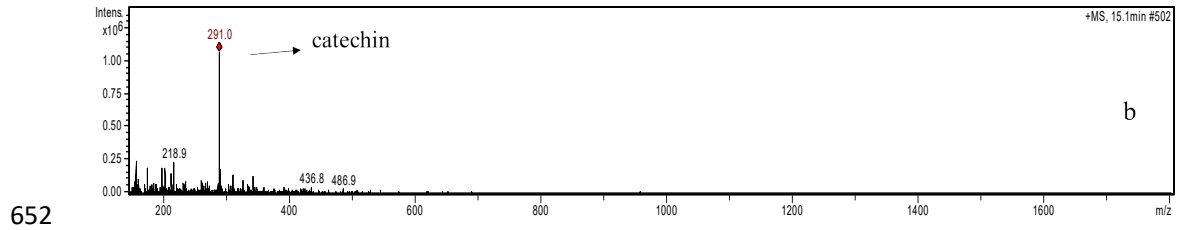
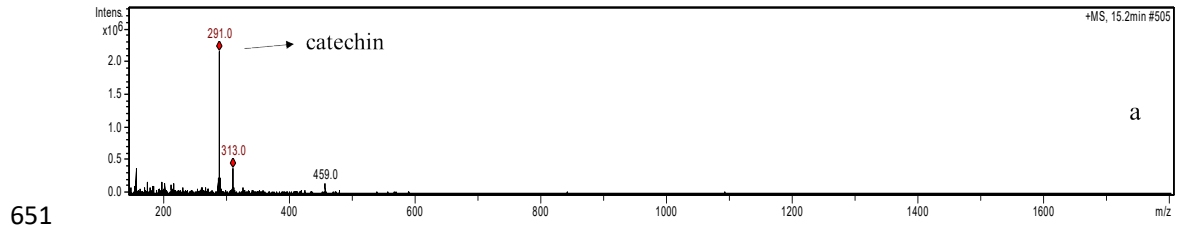
630 **Fig. S2** Primary and secondary mass spectra of catechin before and after reaction with  
631 nitrite. (a, c, and e. the MS spectra before the reaction between catechin and nitrite, b,  
632 d and f. the MS spectra of catechin and nitrite after reaction, g. the secondary mass  
633 spectrum before the reaction of catechin and nitrite, h. the MS<sup>2</sup> spectra of catechin  
634 after reaction with nitrite, i. the total ion chromatograms of catechin after reaction  
635 with nitrite.)

636 **Fig. S3** Primary and secondary mass spectra of procyanidin B2 before and after  
637 reaction with nitrite (a, c, e, and g. the MS spectra before the reaction between  
638 procyanidin B2 and nitrite, b, d, f and h. the MS spectra of procyanidin B2 and nitrite  
639 after reaction; i. the secondary mass spectrum before the reaction of procyanidin B2  
640 and nitrite; j and k. the MS<sup>2</sup> spectra of procyanidin B2 after reaction with nitrite, l. the  
641 total ion chromatograms of procyanidin B2 after reaction with nitrite.)

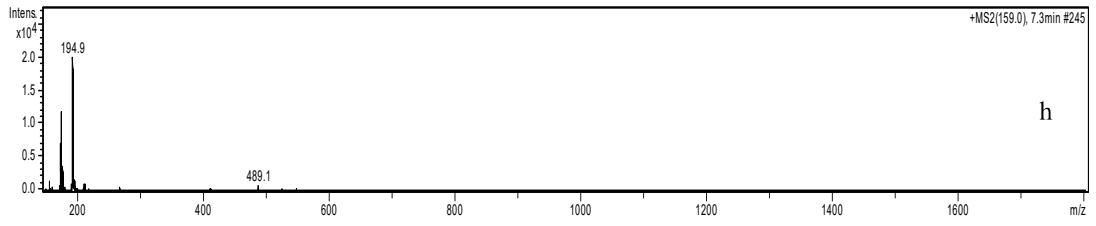
642 Fig. S1



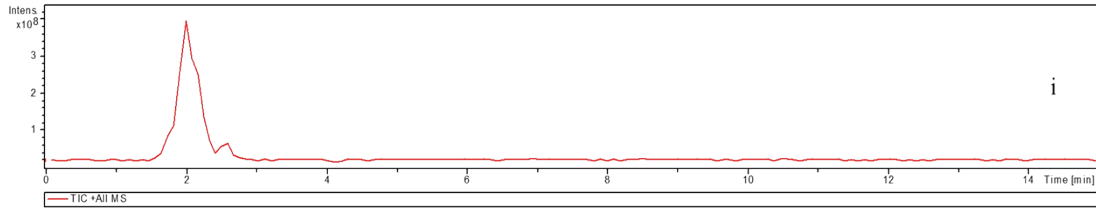
650 Fig. S2



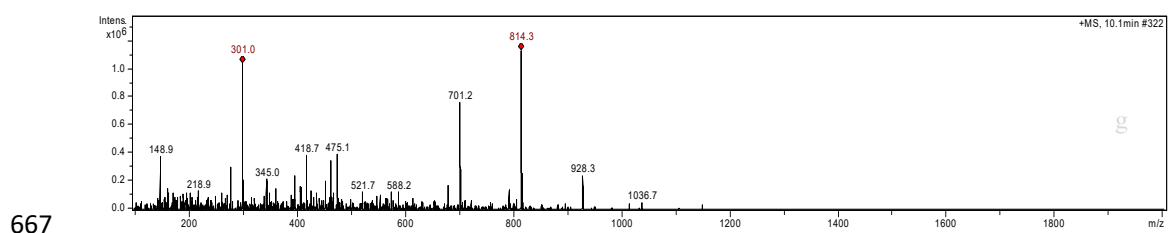
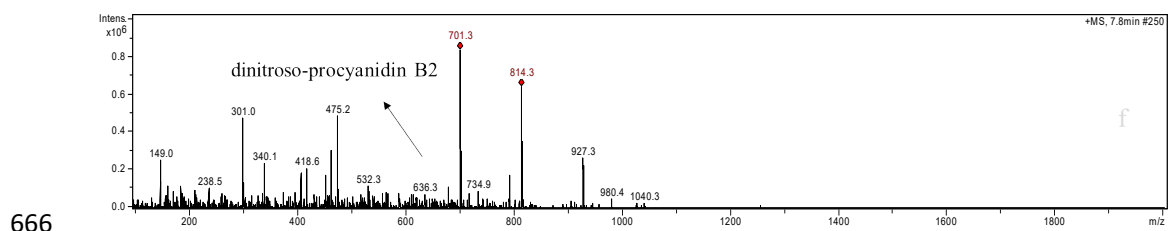
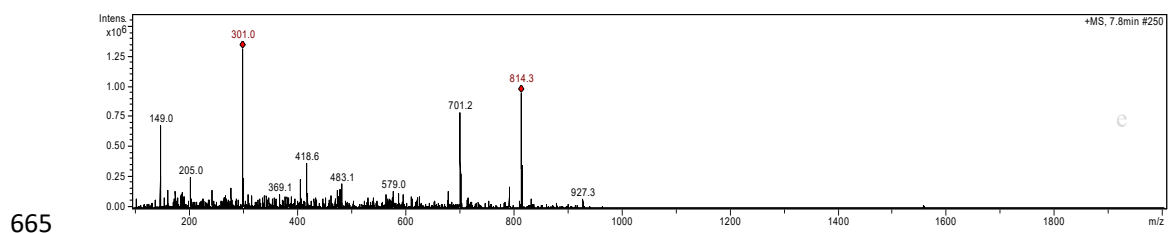
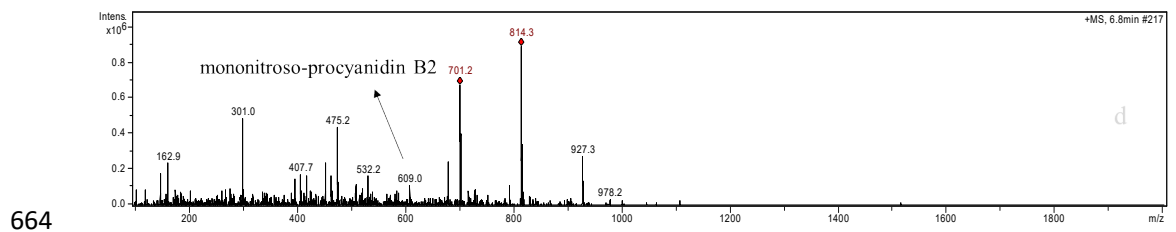
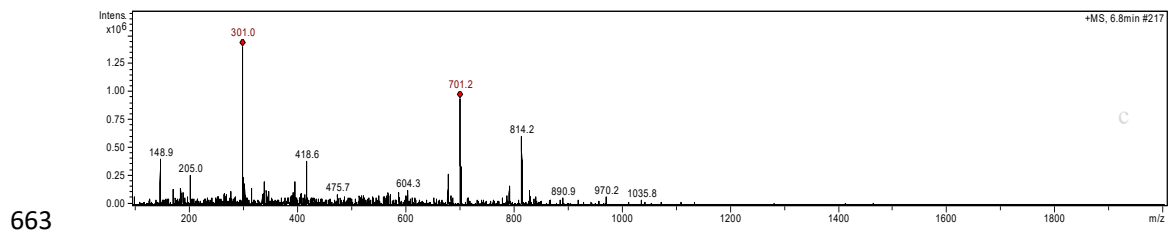
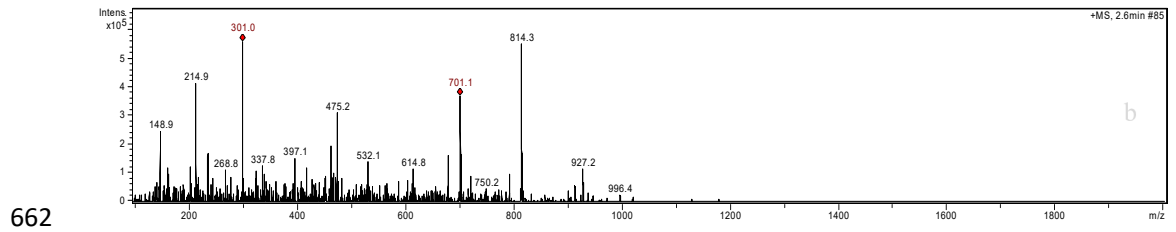
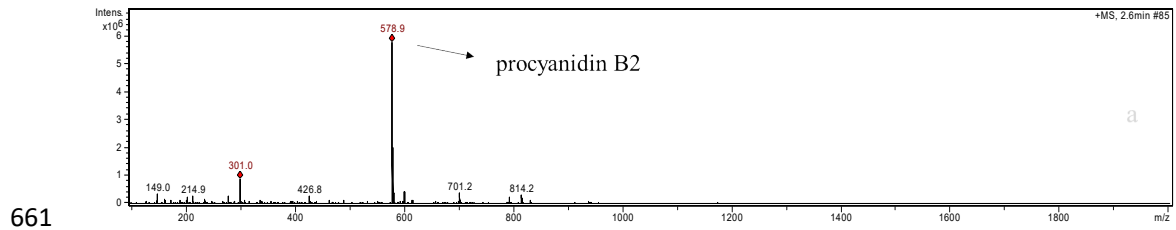
658



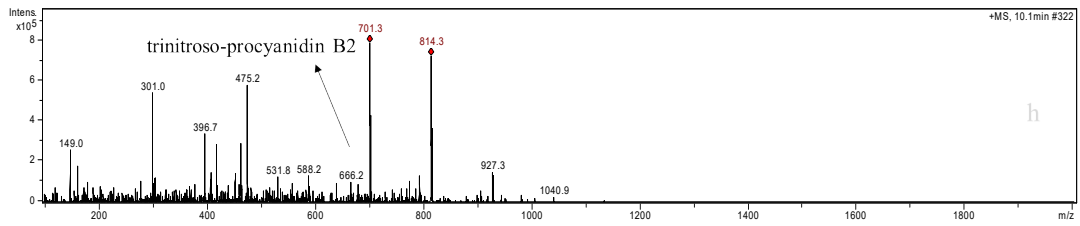
659



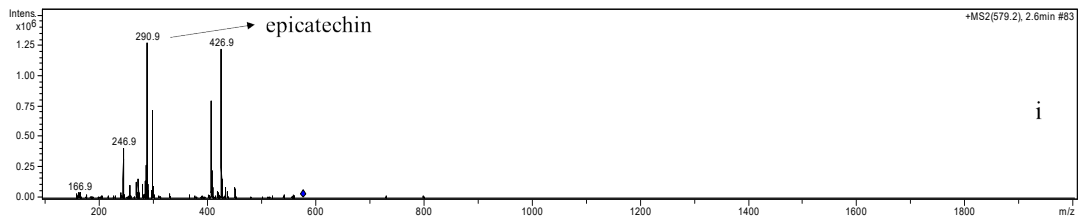
660 Fig. S3



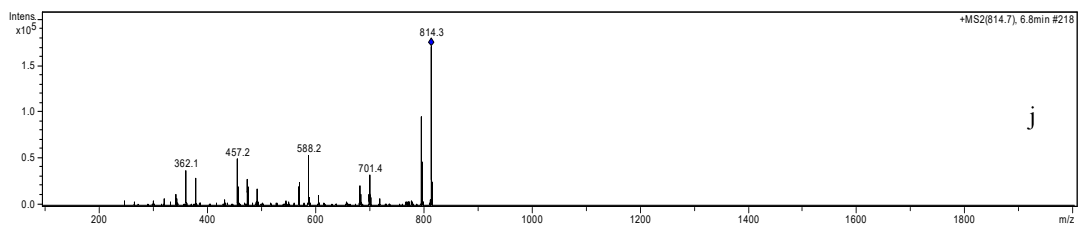
668



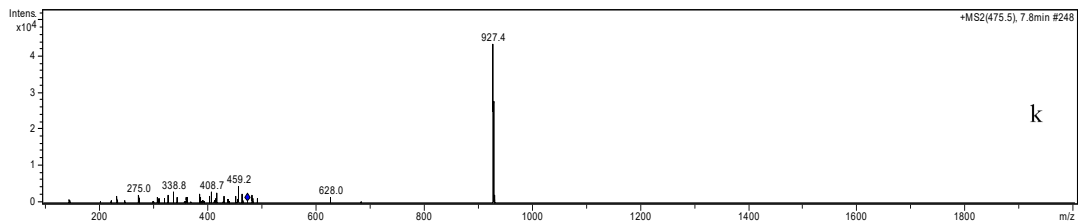
669



670



671



672

