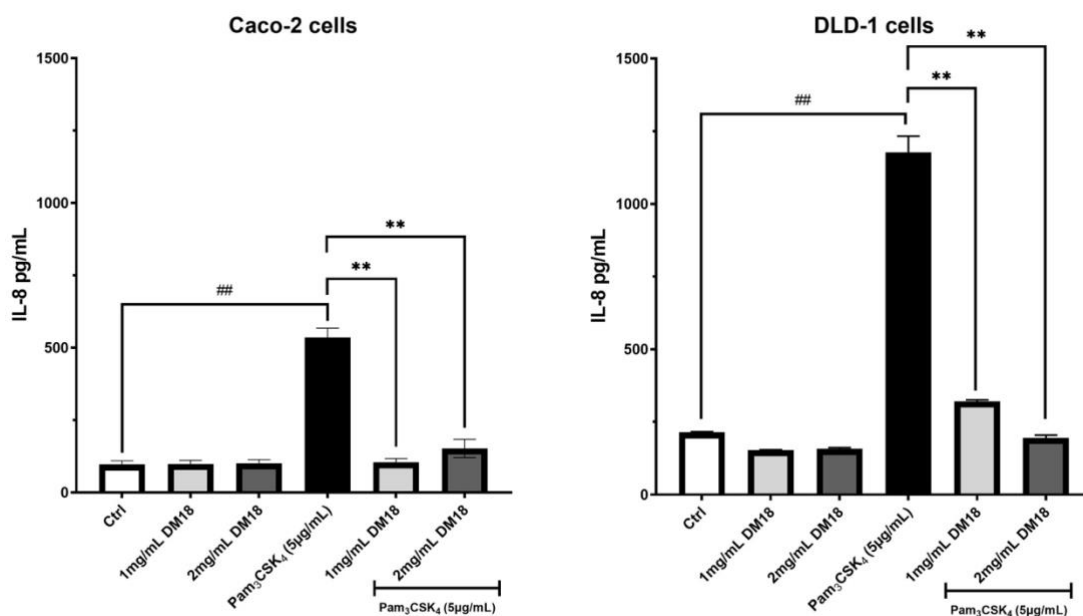


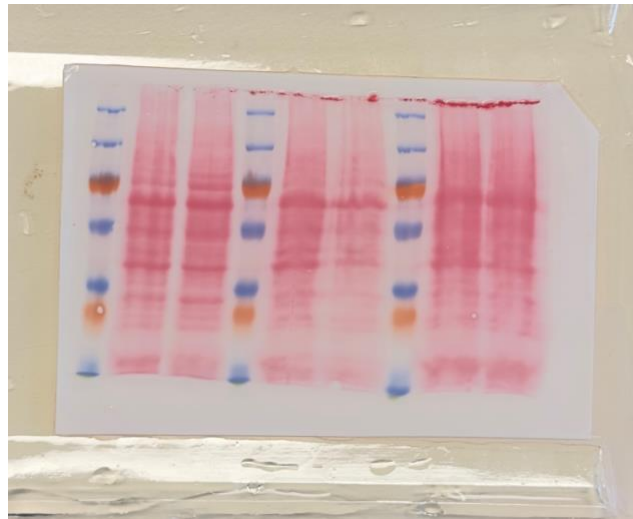
### Supplemental Information

To determine the pectin dose to be used in subsequent TLR-1 inhibition assays, cells were incubated with DM18 pectin (1 mg/mL or 2 mg/mL) with or without the TLR2-1 agonist Pam<sub>3</sub>CSK<sub>4</sub> (5 µg/mL). Cells without any pectin exposure served as controls. Inhibition of TLR-1 was studied by pre-treating both Caco-2 or DLD-1 cells with pectins for 1 hour at the indicated concentrations, followed by treatment with TLR2 agonist for 24 hours. After this, incubation medium was collected for cytokine production determination by ELISA.

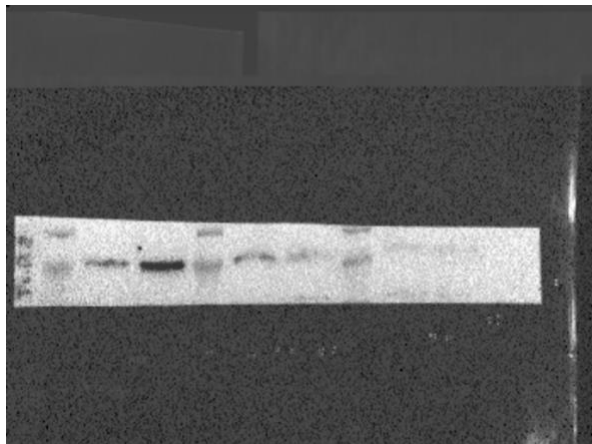


(Fig. S1) DM18 pectin effect on IL-8 secretion in Caco-2 and DLD-1 cells. Caco-2 cells show a statistically significant reduction in TLR2-against induced-IL-8 secretion when exposed to 1mg/mL DM18 pectin, while no further reduction was observed at 2 mg/ml. For DLD-1 cells, both doses reached statistical reduction, however, it was stronger with a dose of 2mg/mL. Cell culture assays were done 3 times. Each dot plot represents the mean and standard deviation of triplicates of each experiment. Data are expressed as mean  $\pm$  SEM. # ( $p < 0.05$ ), ## ( $p < 0.01$ ), ### ( $p < 0.001$ ), #### ( $p < 0.0001$ ) vs. control; \* ( $p < 0.05$ ), \*\* ( $p < 0.01$ ), \*\*\* ( $p < 0.001$ ), \*\*\*\* ( $p < 0.0001$ ) vs. Pam<sub>3</sub>CSK<sub>4</sub>.

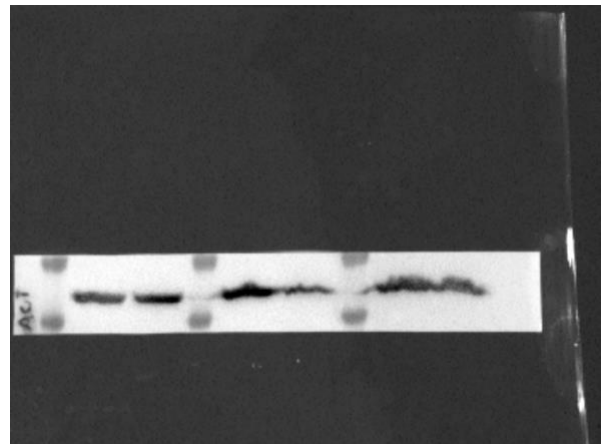
**Western Blot: supporting raw images.**



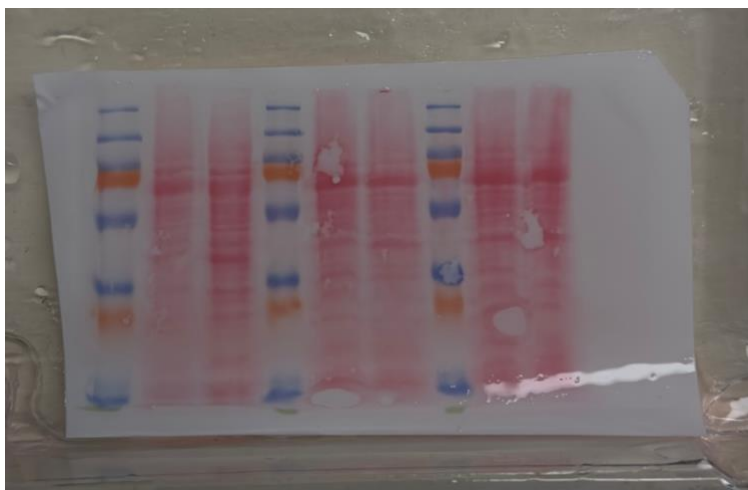
**(Fig. S2A)** Full gel uncropped. Three different protein concentrations. First lane (ladder), second lane: Caco-2 cells (60 $\mu$ g), Third lane: DLD-1 cells (60 $\mu$ g), fourth lane (ladder), fifth lane: Caco-2 cells (40 $\mu$ g), sixth lane: DLD-1 cells (40 $\mu$ g), seventh lane (ladder), eighth lane: Caco-2 cells (30 $\mu$ g), ninth lane: DLD-1 cells (30 $\mu$ g).



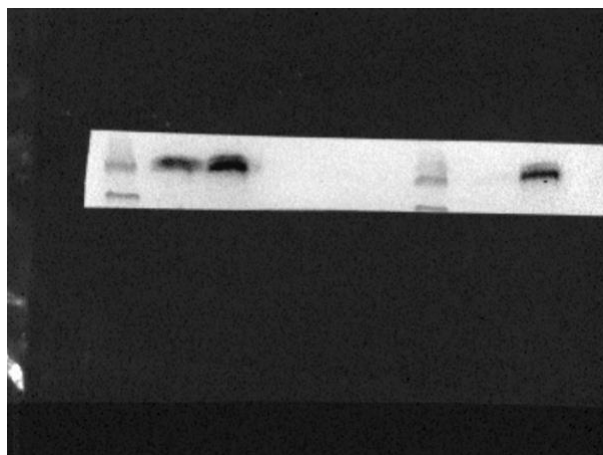
**(Fig S2B.)** Full blot uncropped to TLR2 detection in different protein concentrations described in **Fig.S2A**.



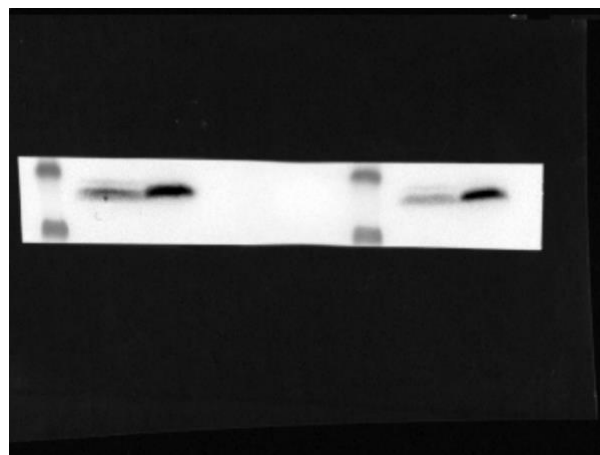
**(Fig. S2C.)** Full blot uncropped to  $\beta$ -actin detection in different protein concentrations **described in Fig.S2A**.



**(Fig. S2D)** Full gel uncropped. Two different replicates using 60 $\mu$ g protein concentration. First lane (ladder), second lane: Caco-2 cells (60 $\mu$ g), Third lane: DLD-1 cells (60 $\mu$ g); forth lane, fifth lane and sixth lane: *These samples correspond to other purpose, therefore, were not used in this paper*; seventh lane (ladder), eighth lane: Caco-2 cells (60 $\mu$ g), nineth lane: DLD-1 cells (60 $\mu$ g).



**(Fig S2E.)** Full blot uncropped to TLR2 detection in two different replicates of each cell line described in **Fig. S2D**.  
**First lane (ladder), second lane: Caco-2 cells (60 $\mu$ g), Third lane: DLD-1 cells (60 $\mu$ g).**



**(Fig S2F.)** Full blot uncropped to  $\beta$ -actin detection in two different replicates of each cell line described in **Fig. S2D**.  
**Seventh lane (ladder), eighth lane: Caco-2 cells (60 $\mu$ g), nineth lane: DLD-1 cells (60 $\mu$ g).**