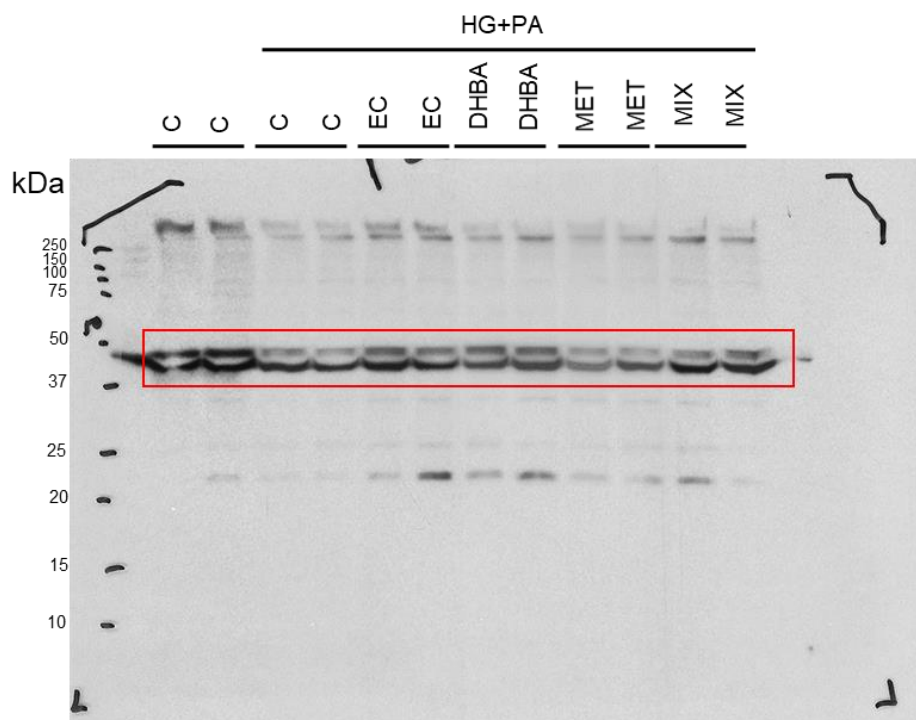


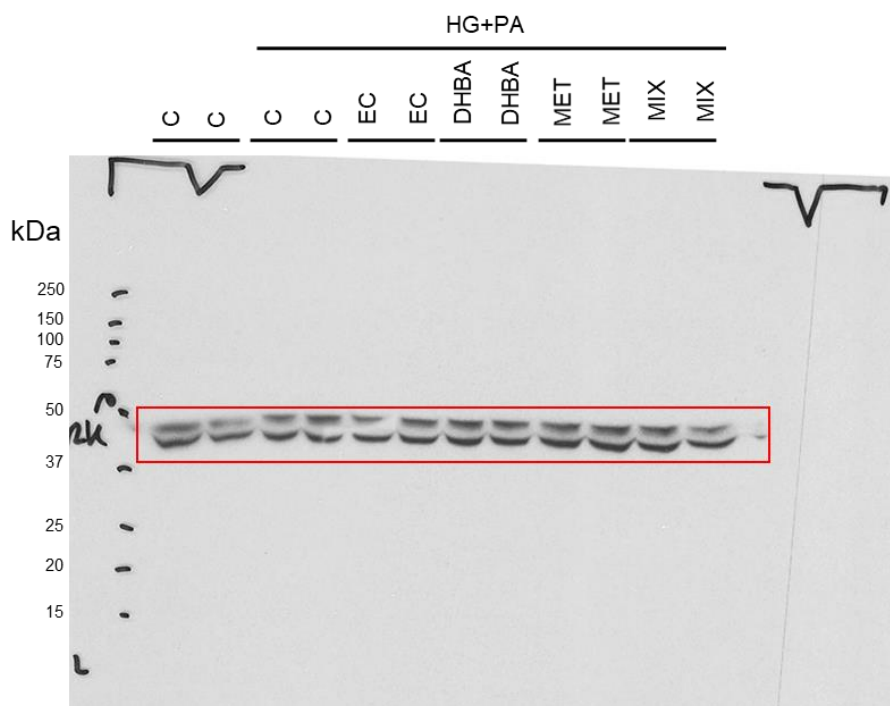
UNCROPPED WESTERN BLOTS

Figure 1

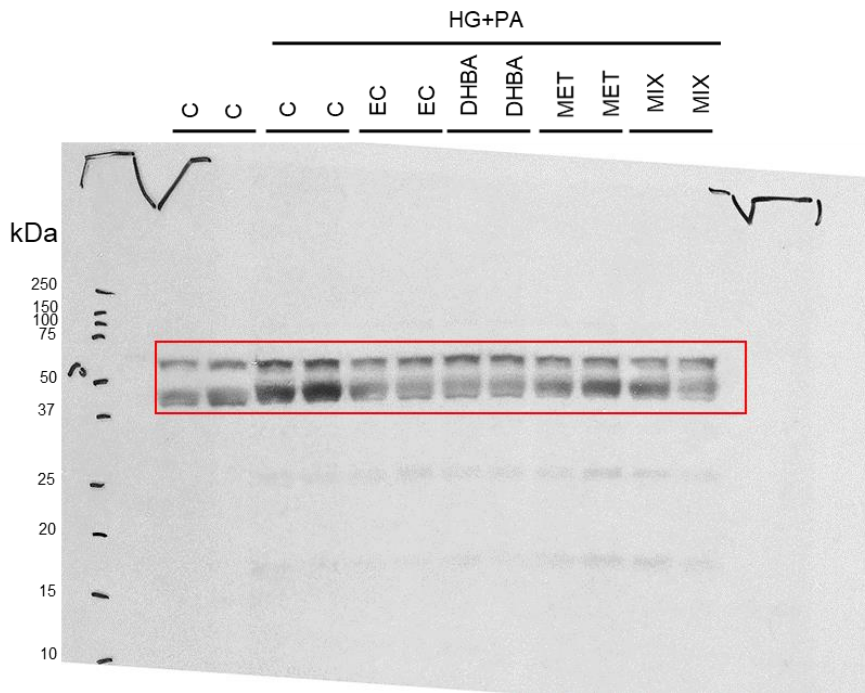
p-ERK



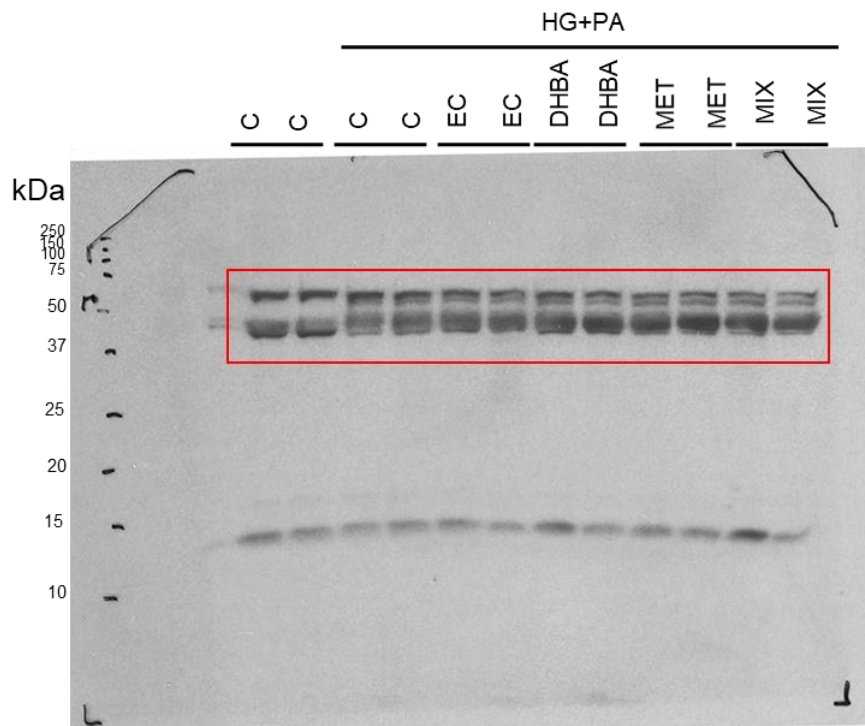
ERK



p-JNK



JNK



β -actin

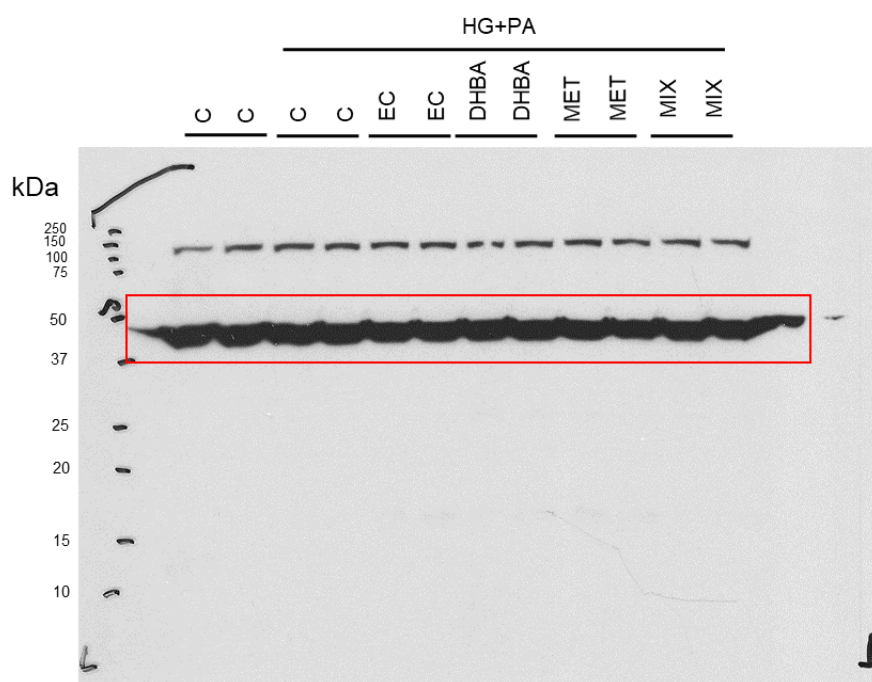
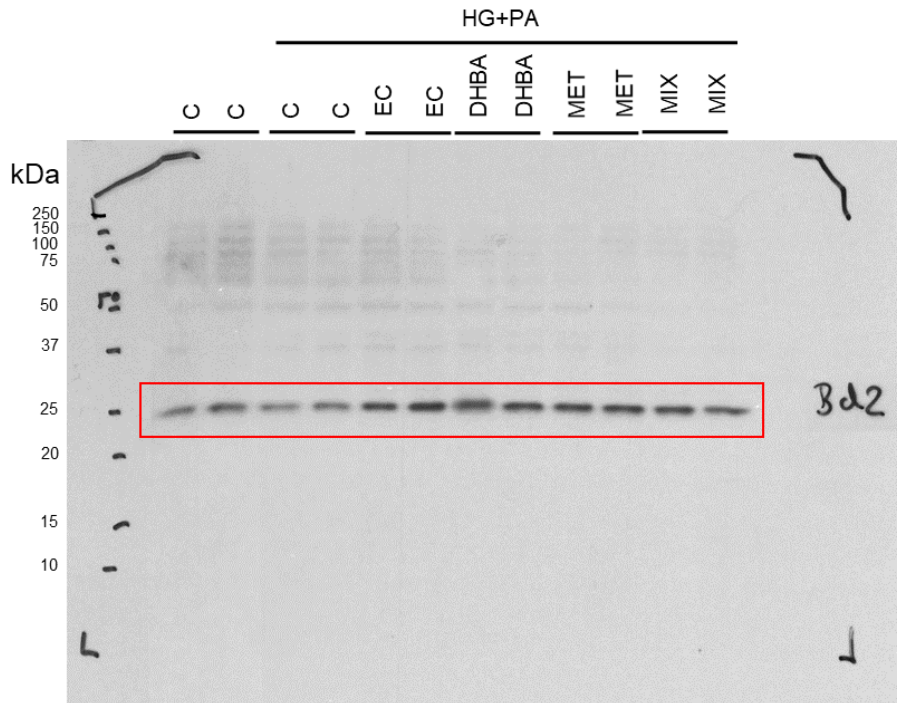
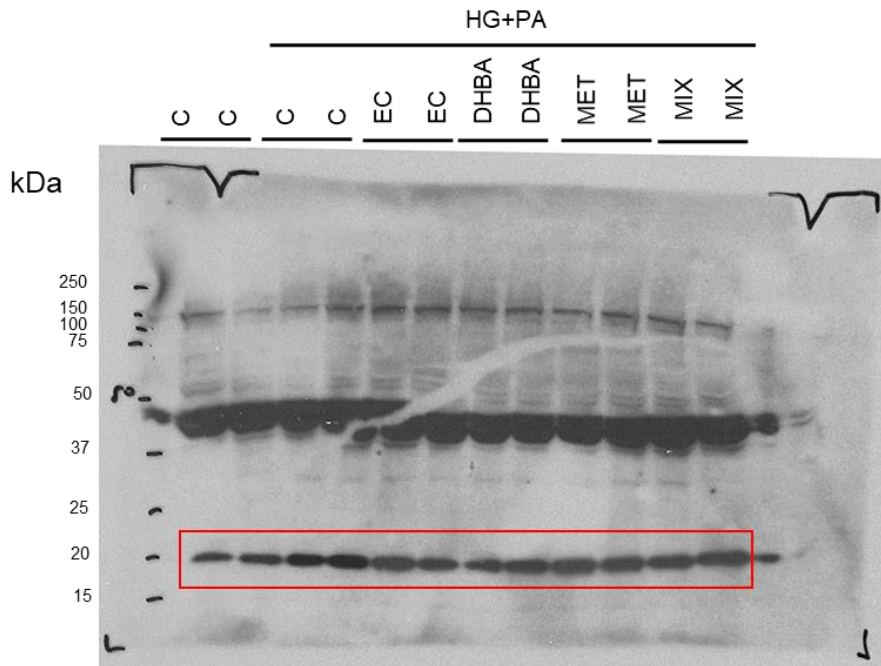


Figure 2

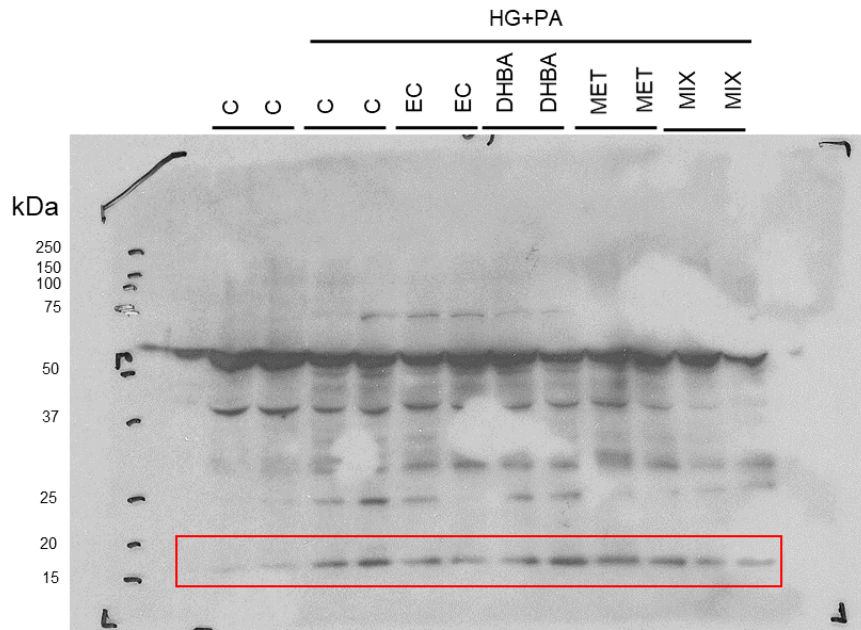
Bcl-2



Bax



Cleaved caspase-3



β -actin

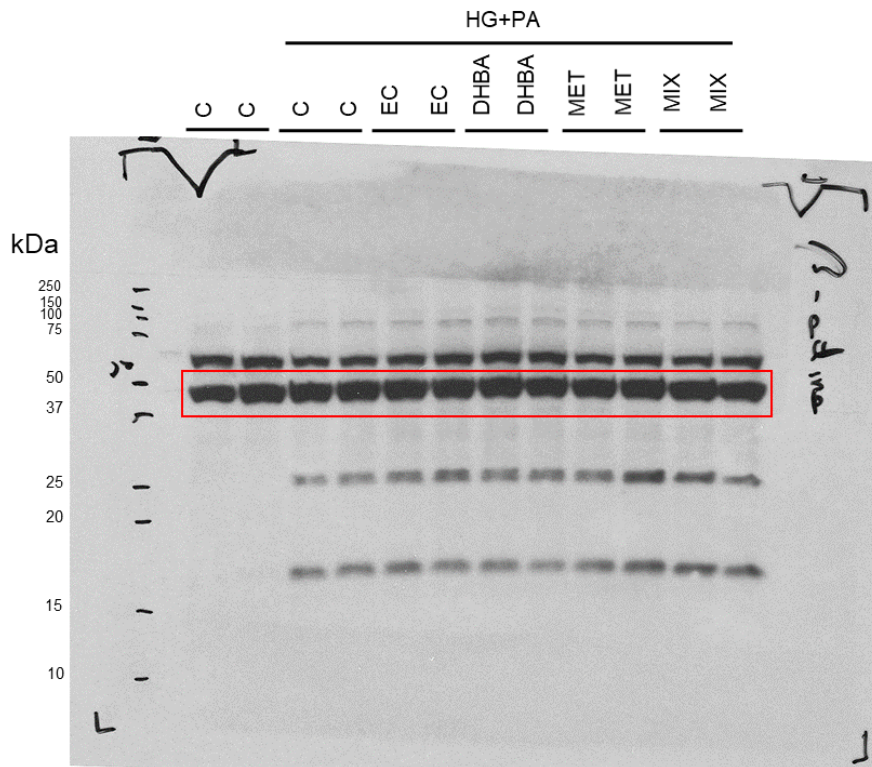
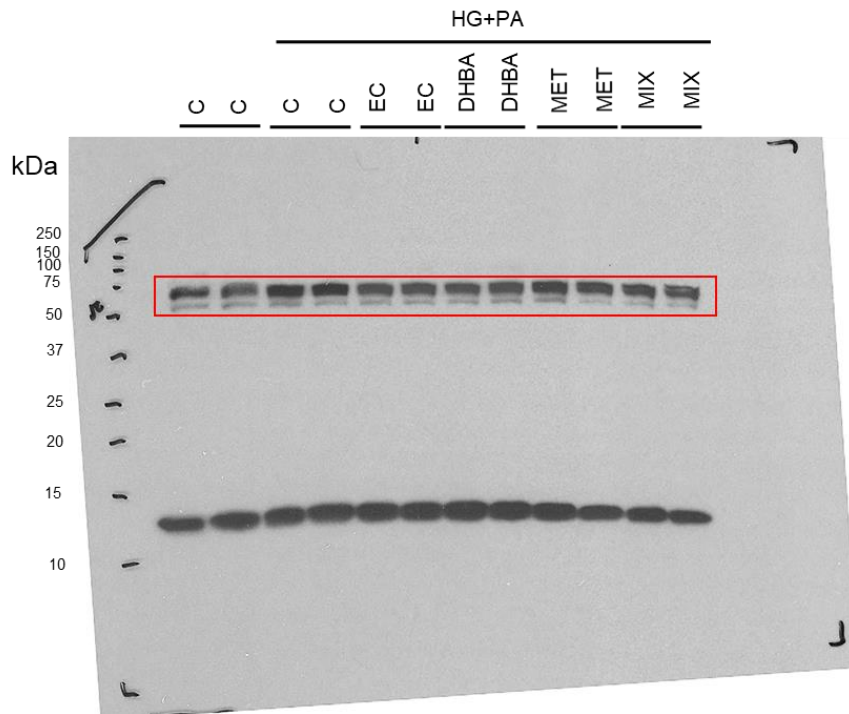
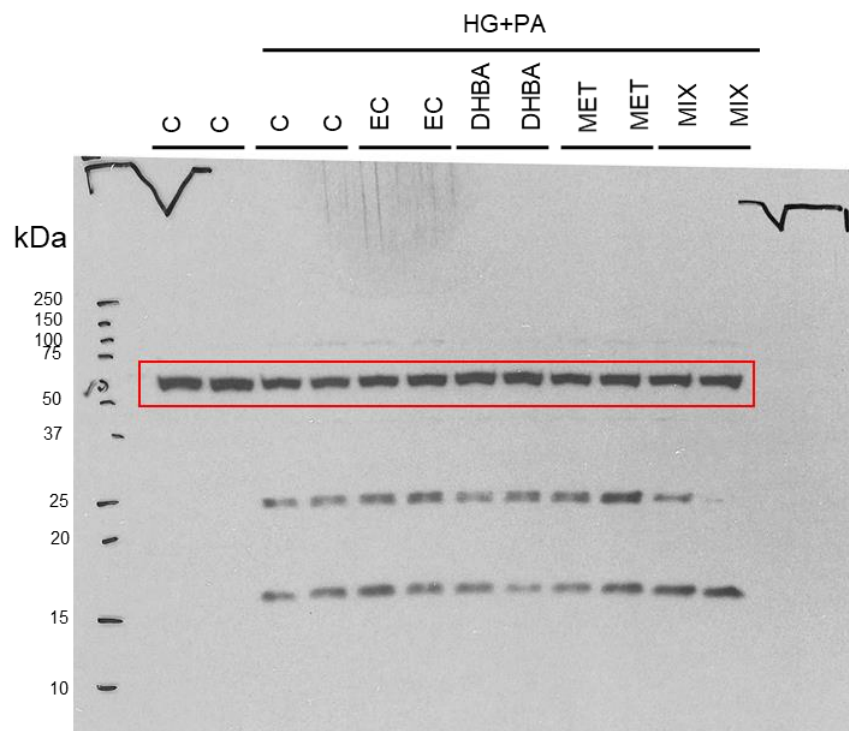


Figure 3

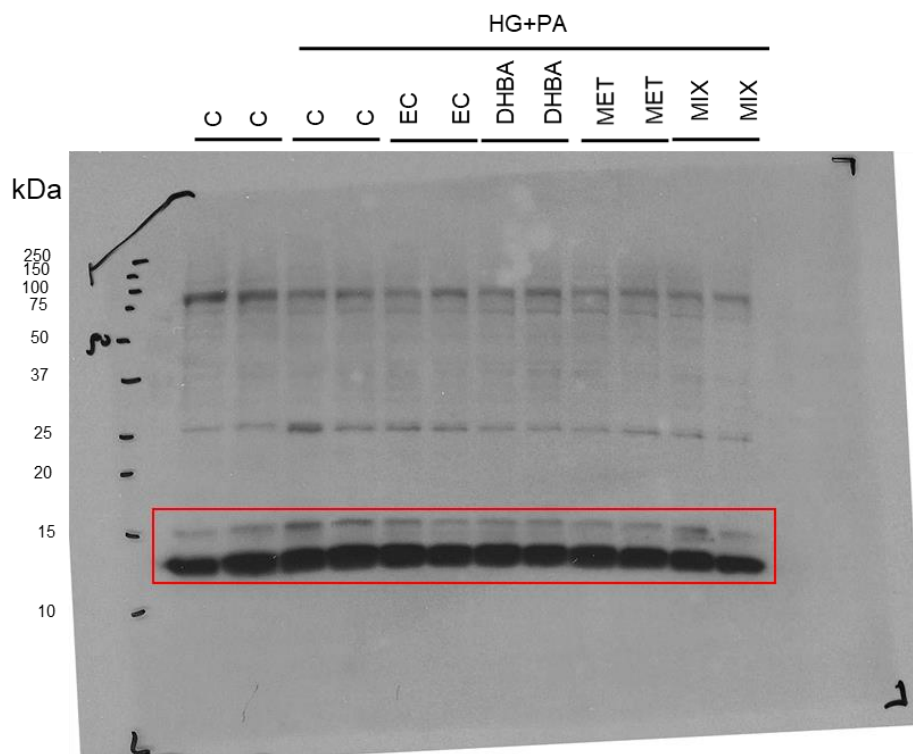
p62



Beclin-1



LC3-I & LC3-II



β -actin

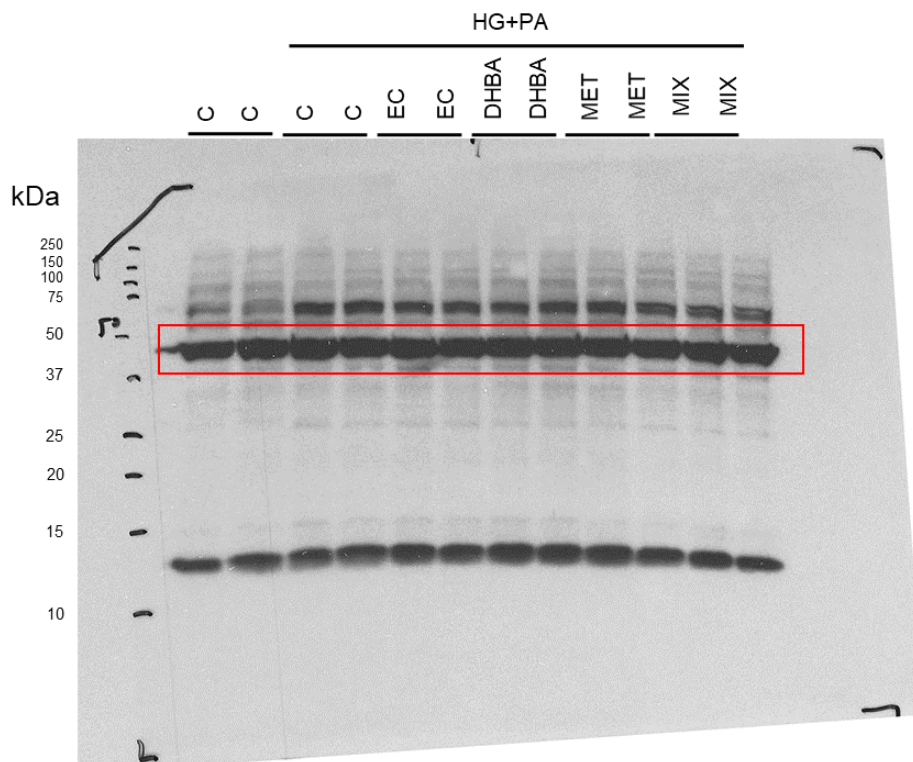
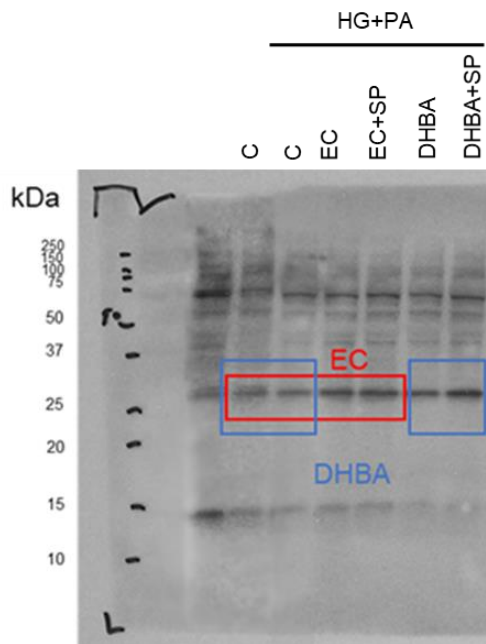


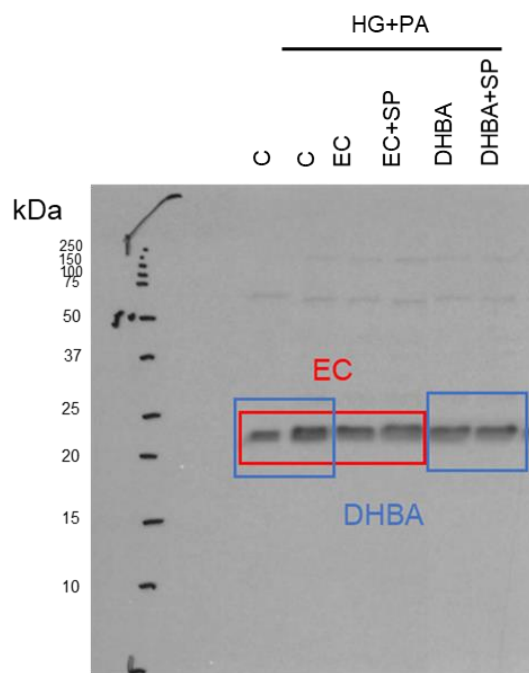
Figure 5A

Please, note that EC and DHBA experimental conditions were loaded on the same gel and thus, C (control, untreated cells) and HG+PA bands were the same for both compounds. In the figure, the cropping has been marked in the corresponding bands (those that shared the controls) with a dashed line.

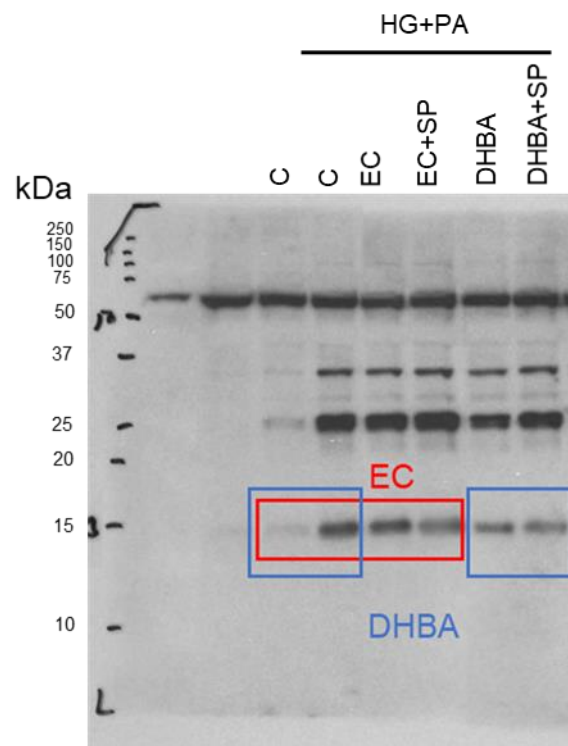
Bcl-2



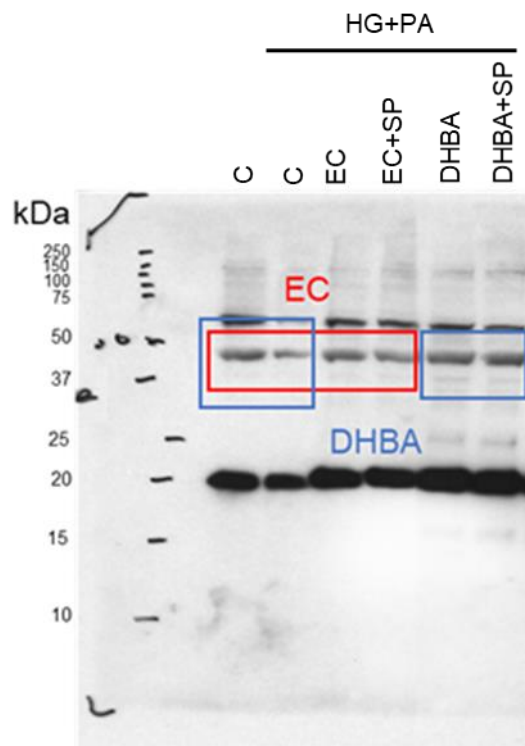
Bax



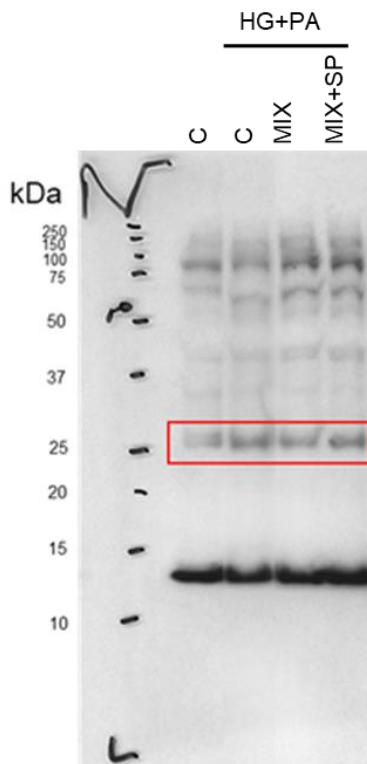
Cleaved caspase-3



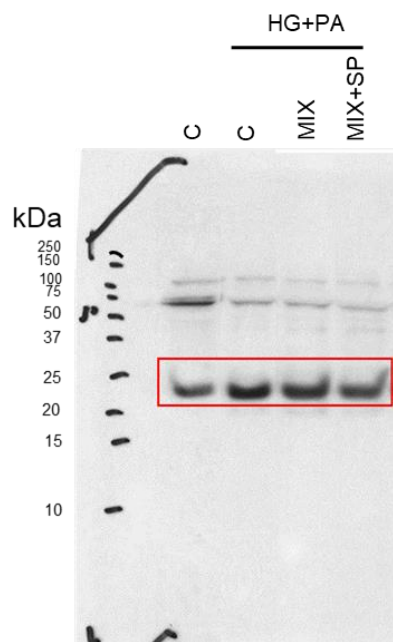
β -actin



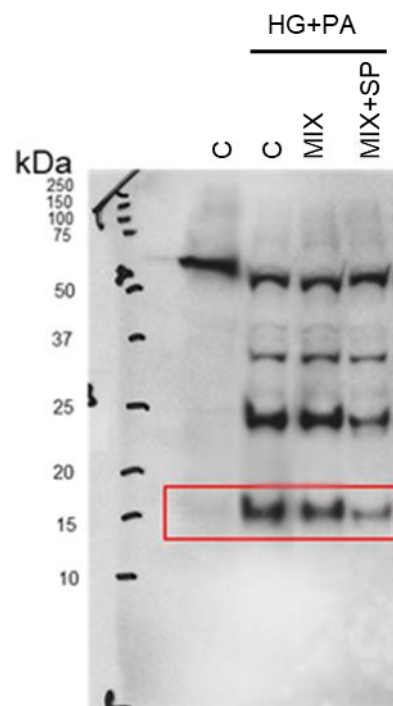
Bcl-2



Bax



Cleaved caspase-3



β -actin

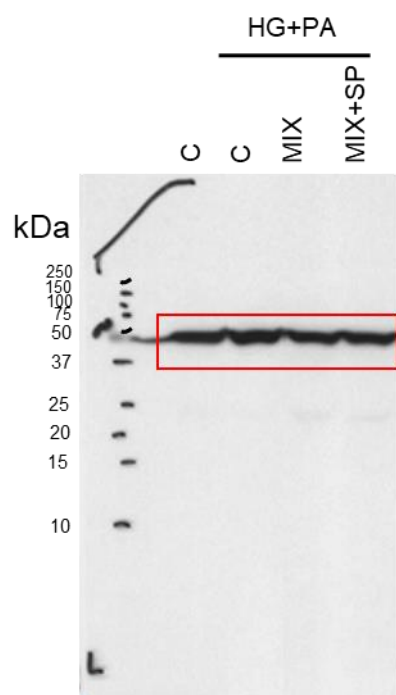
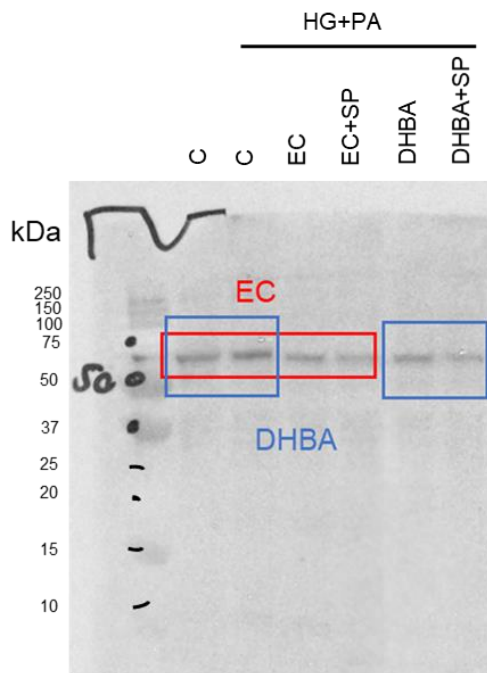


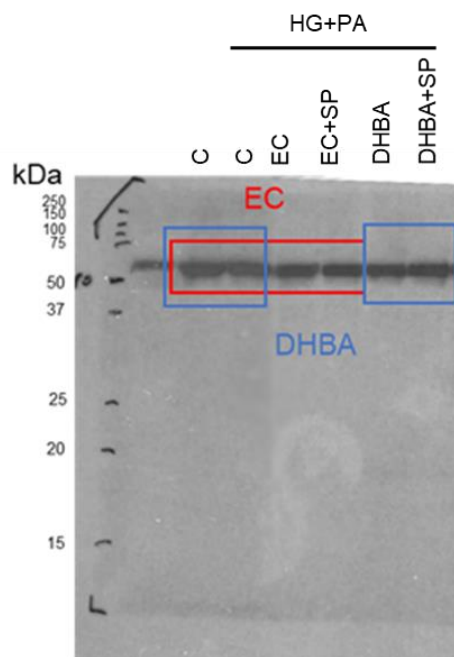
Figure 6A

Please, note that EC and DHBA experimental conditions were loaded on the same gel and thus, C (control, untreated cells) and HG+PA bands were the same for both compounds. In the figure, the cropping has been marked in the corresponding bands (those that shared the controls) with a dashed line.

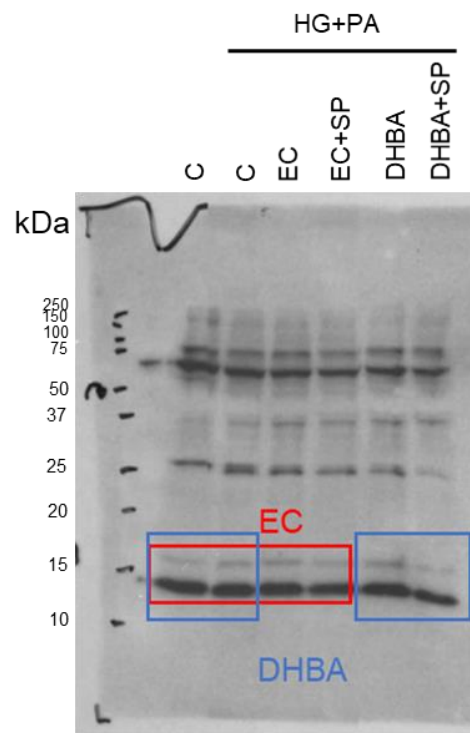
p62



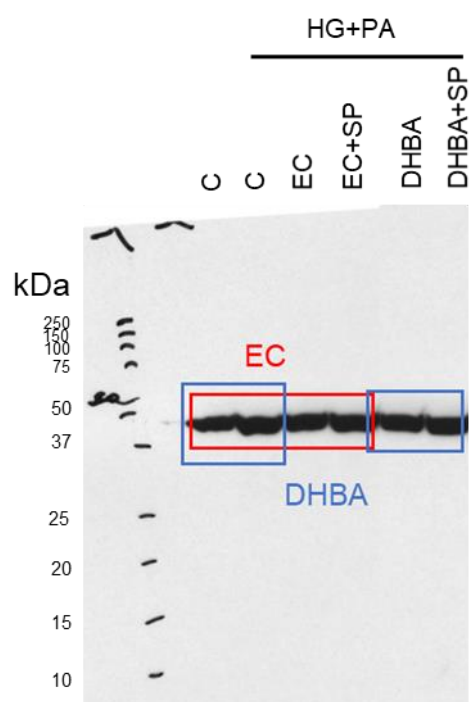
Beclin-1



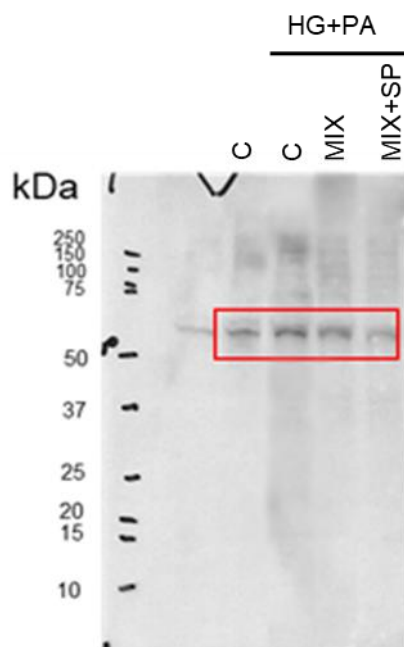
LC3-I & LC3-II



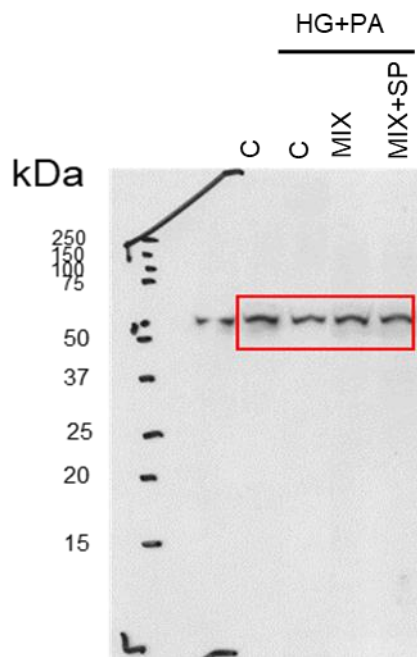
β -actin



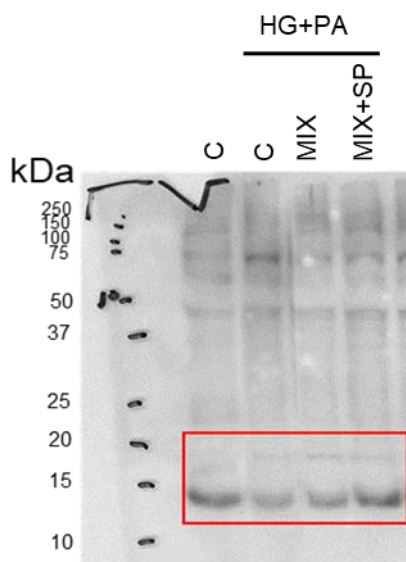
p62



Beclin-1



LC3-I & LC3-II



β -actin

