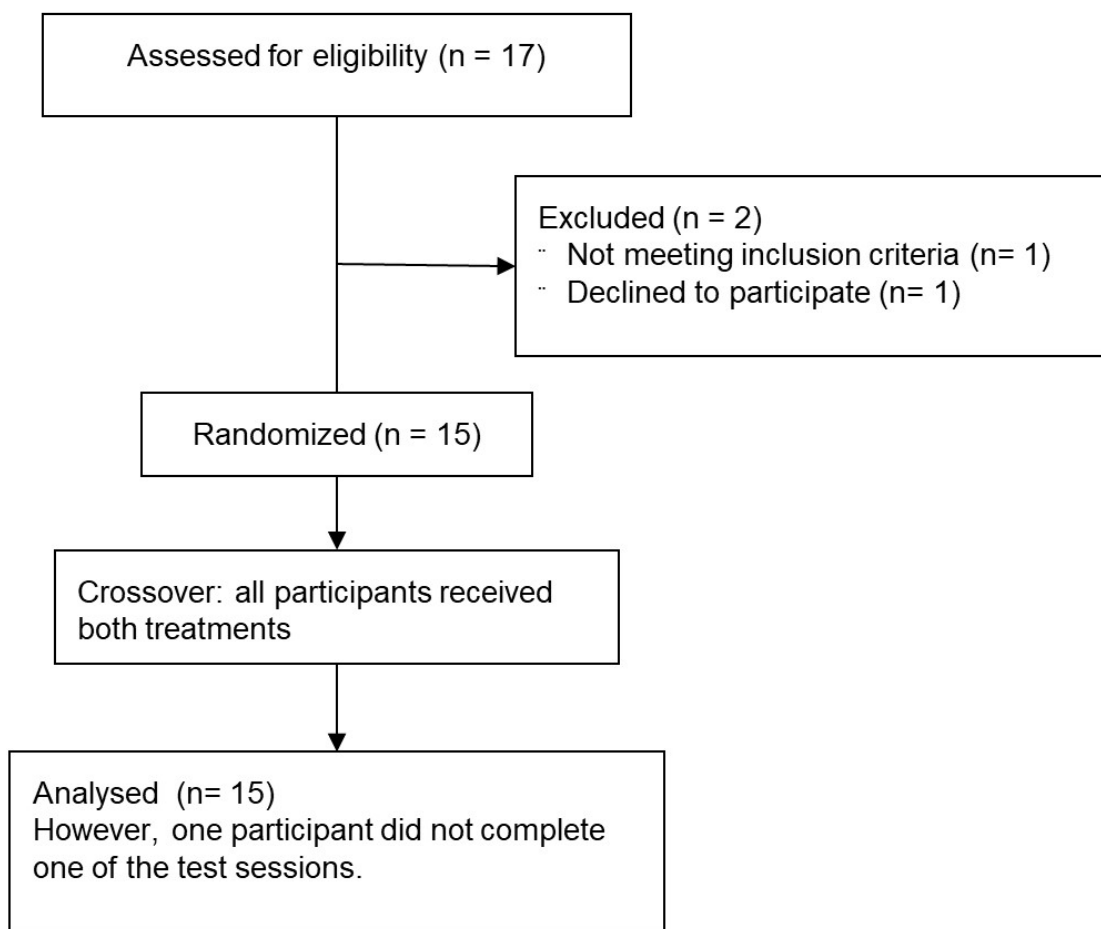
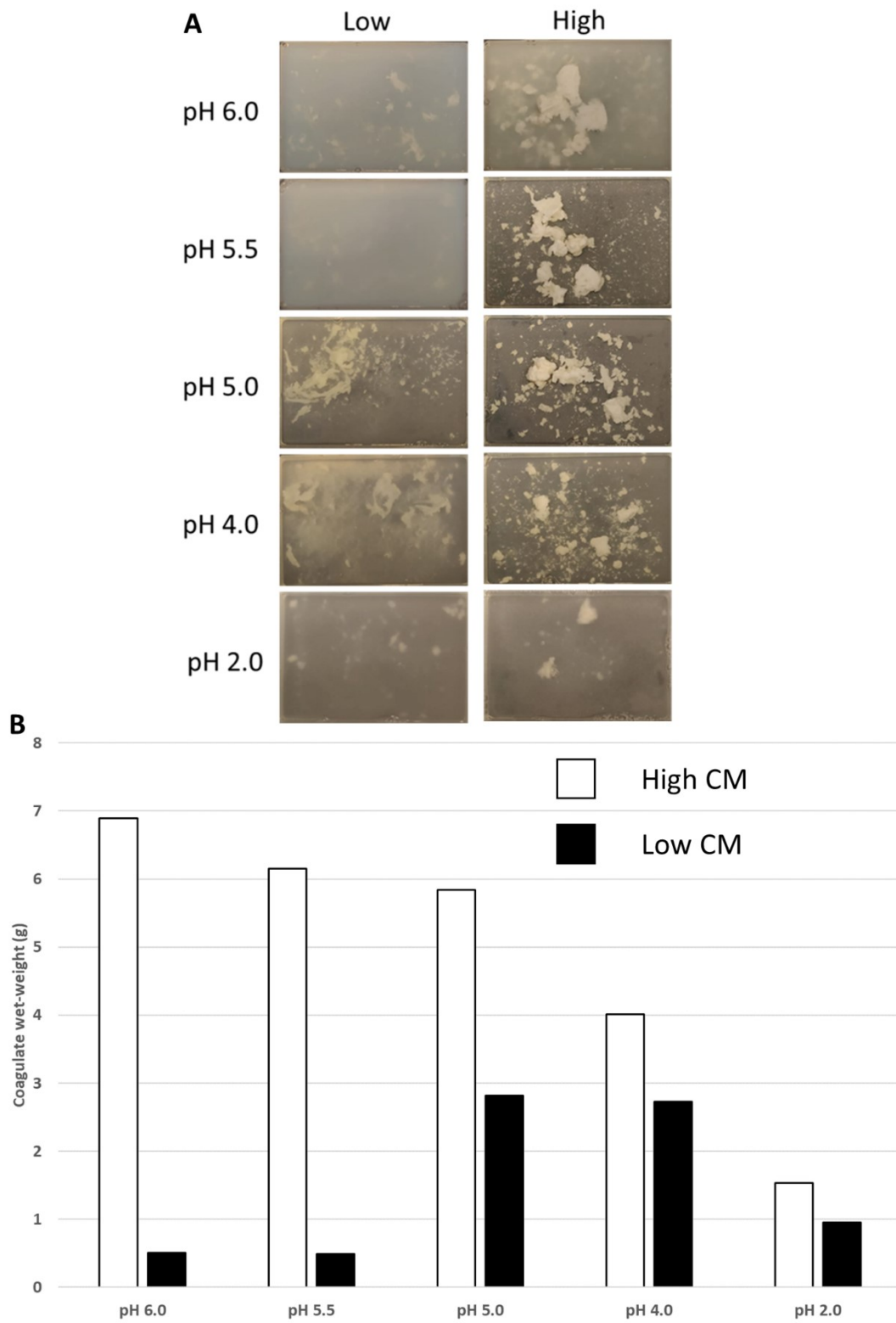


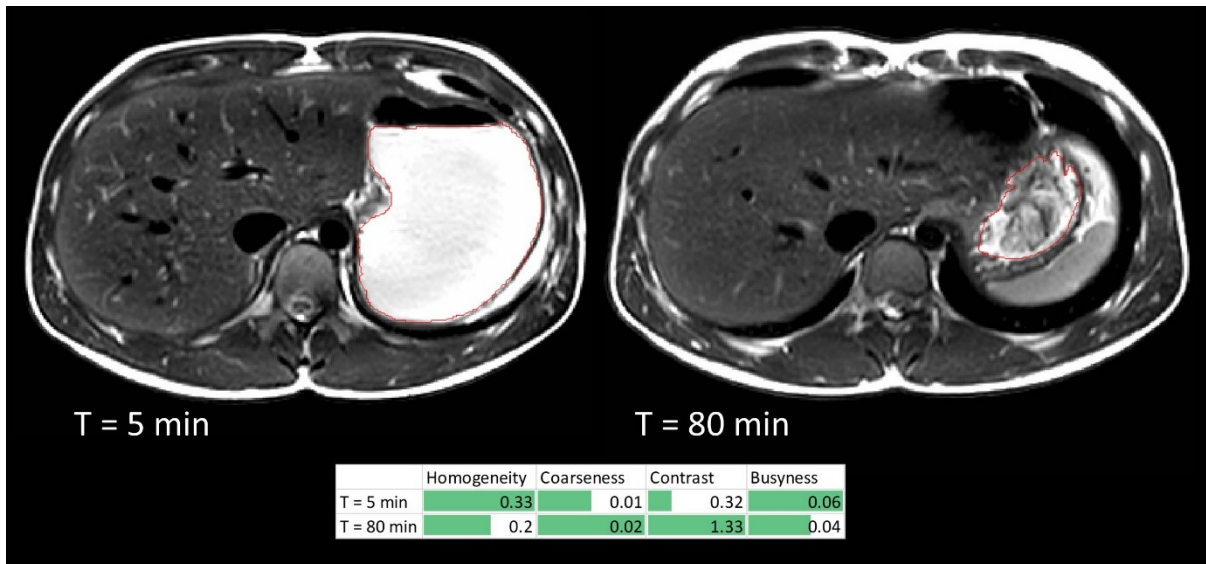
SUPPLEMENTARY FIGURES



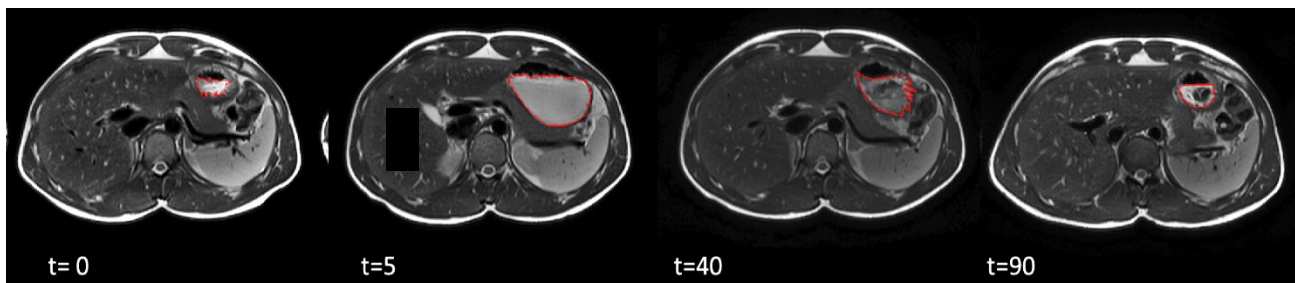
Supplementary figure 1. Study flow diagram



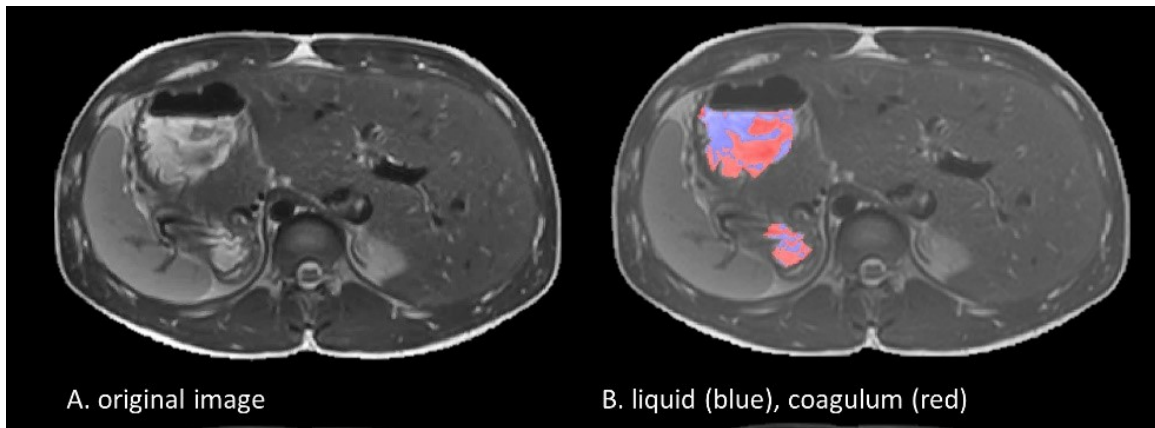
Supplementary figure 2. Coagulation *in vitro*



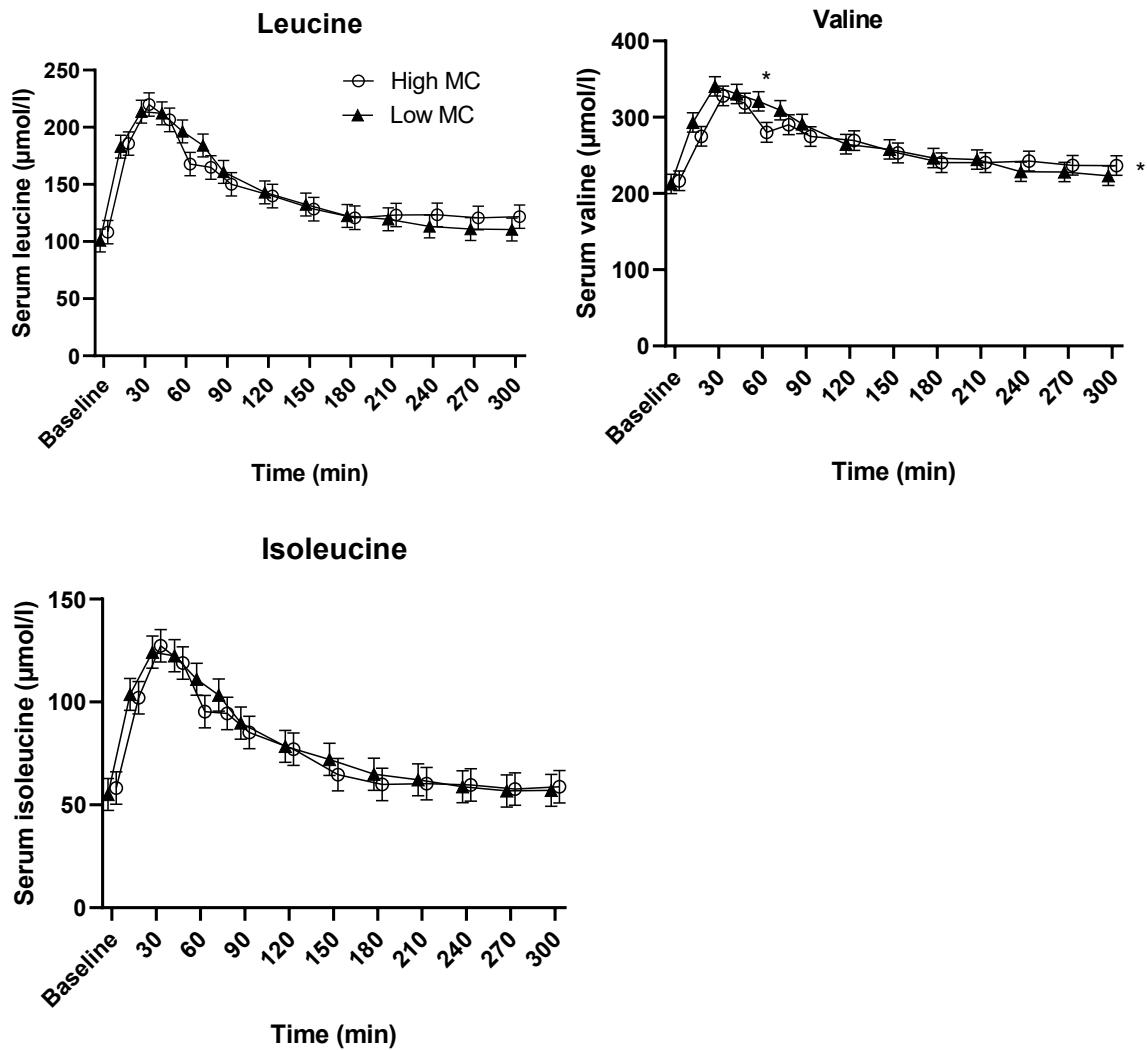
Supplementary figure 3. Examples of T_2 -weighted magnetic resonance images showing cross-sections of non-coagulating stomach content at $T = 5$ minutes and coagulating stomach content at $T = 80$ minutes and the associated image texture metrics.



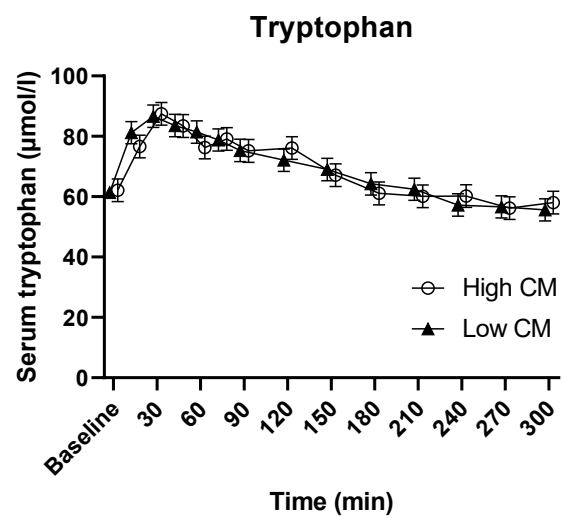
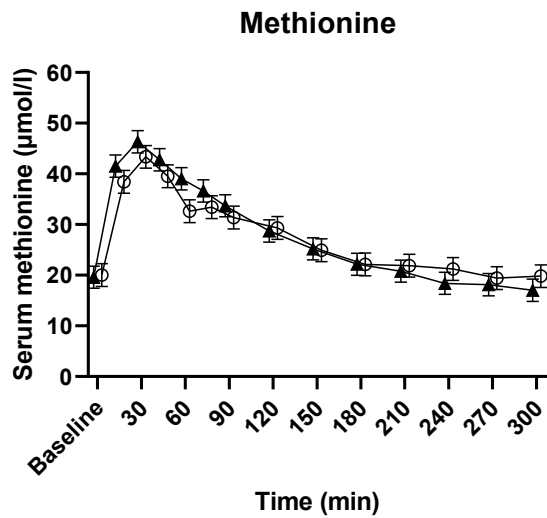
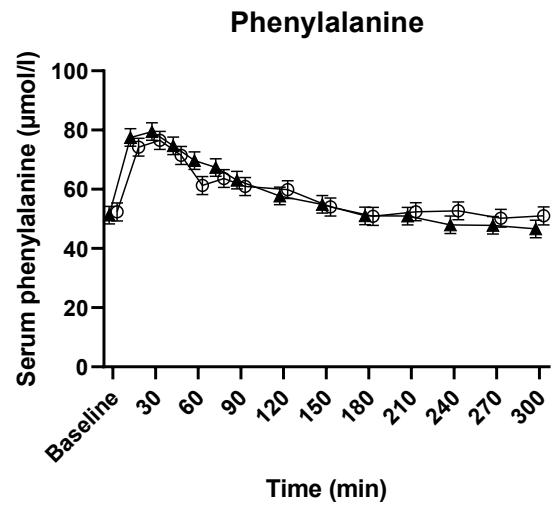
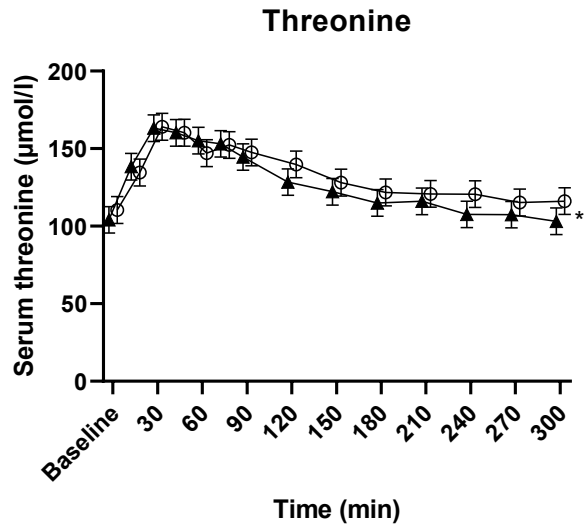
Supplementary figure 4. Examples of T_2 -weighted magnetic resonance images showing cross-sections through an empty stomach after an overnight fast (baseline) and after 600 ml skimmed milk consumption. The red line delineates stomach content. At $T = 40$ and 90 minutes milk protein coagulation can be observed by darker and lighter voxels.



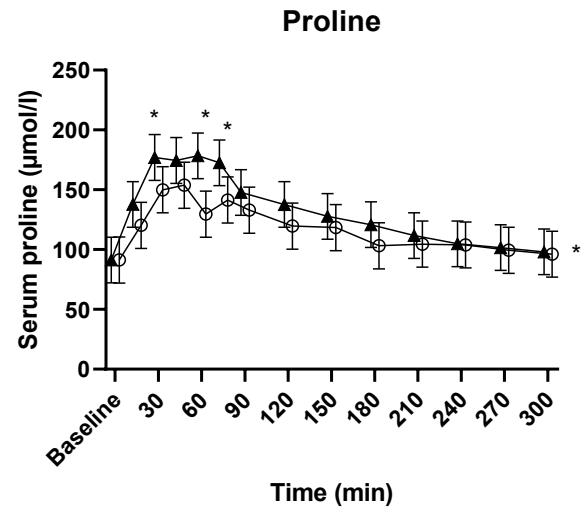
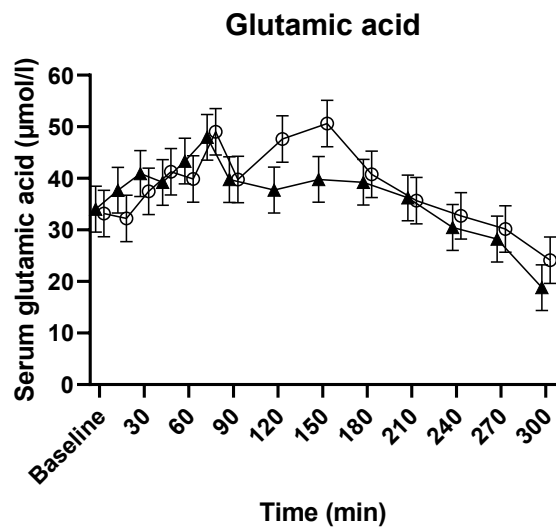
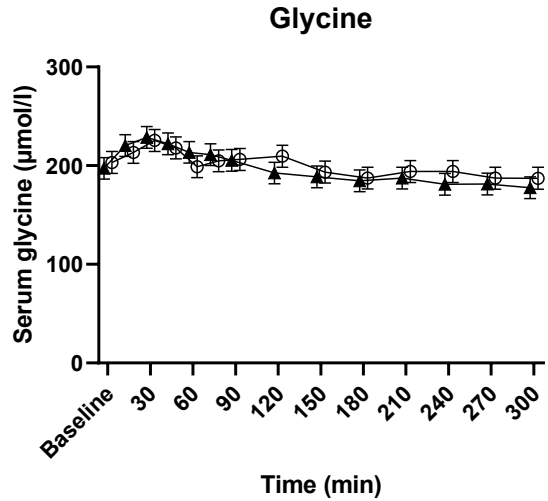
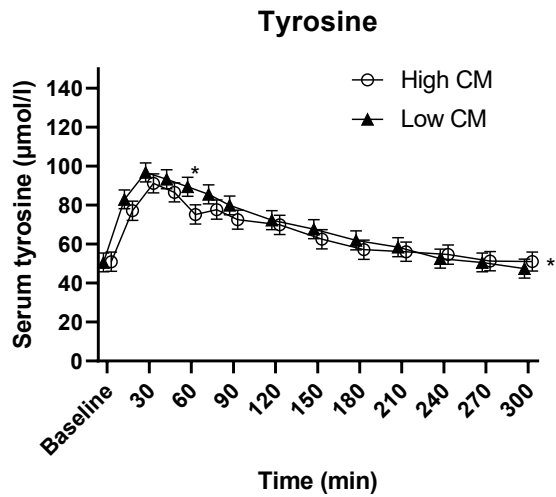
Supplementary figure 5. Examples of T_2 -weighted magnetic resonance images showing cross-sections through a stomach at $T = 60$ min with A showing the original image and B the voxels of stomach content colored: liquid as blue and semi-solid as red after applying the thresholding method.



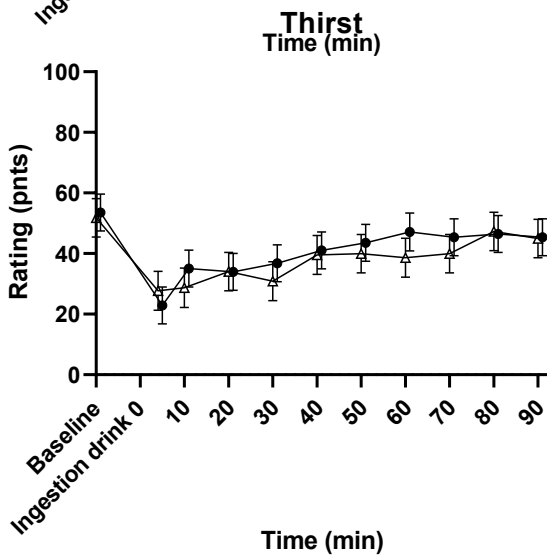
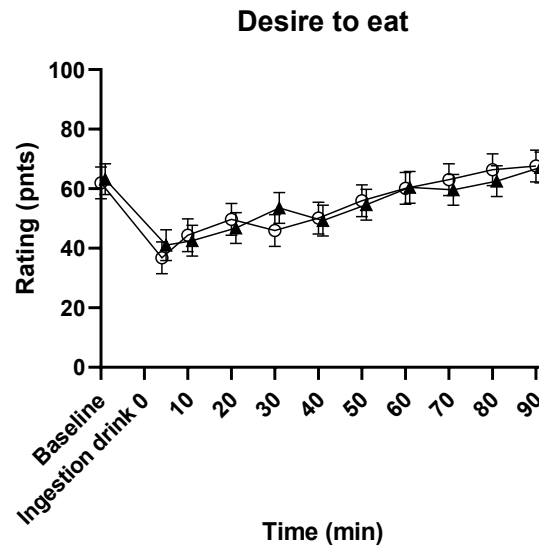
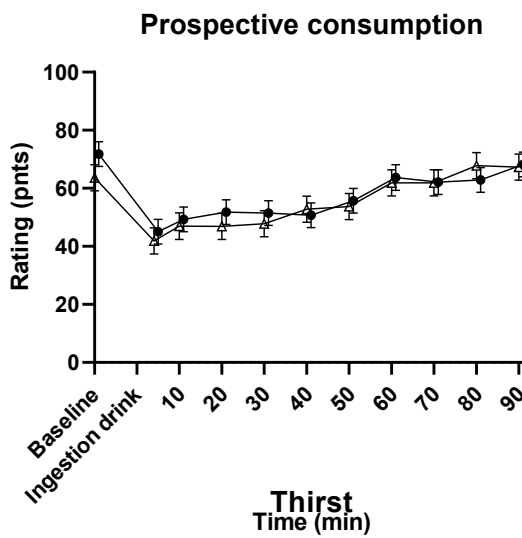
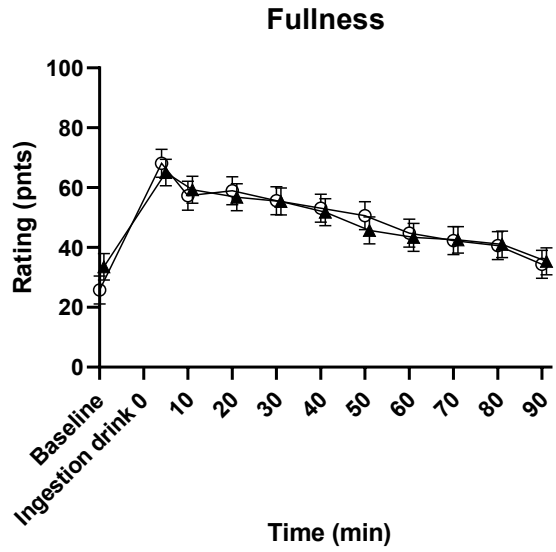
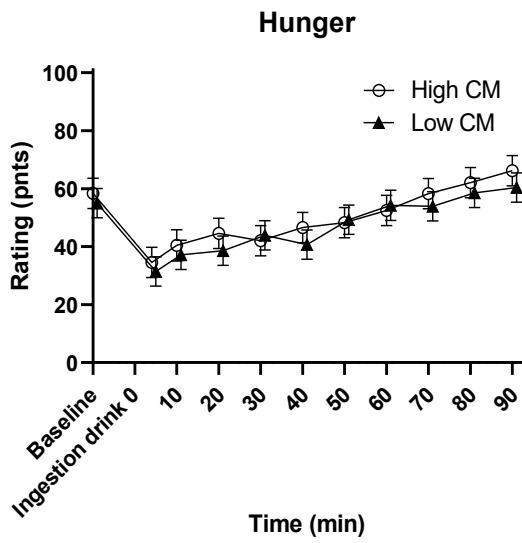
Supplementary figure 6. Mean \pm SEM of serum branch chained amino acids over time (n=15). *p < 0.05 placed above the value denotes a significant time point, at the right of the graph it denotes a significant treatment effect.



Supplementary figure 7. Mean \pm SEM of serum essential amino acids over time (n=15). *p < 0.05 placed above the value denotes a significant time point, at the right of the graph it denotes a significant treatment effect.



Supplementary figure 8. Mean \pm SEM of serum non-essential or conditionally essential amino acids over time (n = 15). *p < 0.05 placed above the value denotes a significant time point, at the right of the graph it denotes a significant treatment effect.



Supplementary figure 9. Mean \pm SEM of appetite ratings hunger, fullness, prospective consumption, desire to eat and thirst (n=15).