

Appendix B

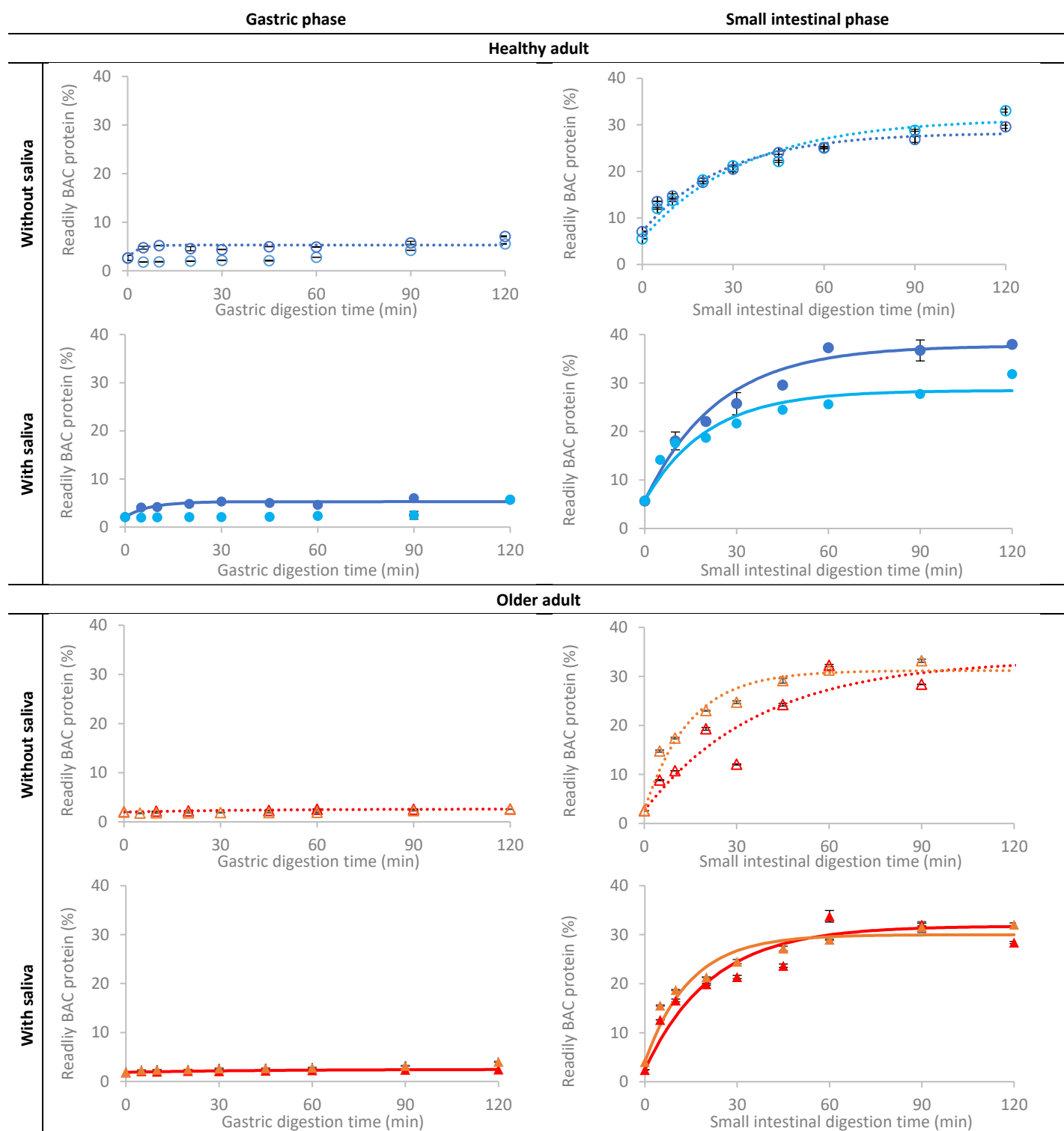


Figure B.1: Proteolysis during gastric and small intestinal *in vitro* digestion of cooked lentils, applying models relevant for healthy adults (○/● and ◊/◐, for static and semi-dynamic models, resp.) and older adults (△/▲ and ◊/◐ for static and semi-dynamic models, resp.). Open symbols indicate simulations without addition of saliva in the oral phase, while full symbols represent simulations including saliva. The standard deviation of analytical replicates is indicated by error bars.