

Supplementary Information

Protective effect of vitexin against high fat-induced vascular endothelial inflammation through inhibiting trimethylamine N-oxide-mediated RNA m6A modification

Wenwen Li^a, Zeyuan Deng^{a,b,c}, Shuang Xiao^a, Qian Du^a, Mengru Zhang^a, Hailing Song^a, Caidong Zhao^a and Liufeng Zheng^{a,b*}

^a State Key Laboratory of Food Science and Resources, Nanchang University, Nanchang 330047, Jiangxi, China

^b International Institute of Food Innovation, Nanchang University, Nanchang 330051, Jiangxi, China

^c Institute for Advanced Study, University of Nanchang, Nanchang 330031, Jiangxi, China

*Correspondence to: Liufeng Zheng.

E-mail address: zhenglf2018@ncu.edu.cn

Table S1. Quality control parameters for biochemical analysis tests

Assay	Range	Sensitivity	Intra CV	Inter CV	Min sample
TC	0-19.39 mmol/L	> 0.01 mmol/L	< 3.0%	< 5.0%	2.5 μ L
LDL-C	0-10.40 mmol/L	> 0.01 mmol/L	< 8.0%	< 10.0%	2.5 μ L
HDL-C	0-5.16 mmol/L	> 0.09 mmol/L	< 3.0%	< 5.0%	2.5 μ L

Table S2. Primer sequences for qRT-PCR

	Gene	Forward primer	Reverse primer
	<i>IL-6</i>	CTCCCAACAGACCTGTCTATAC	CCATTGCACAACCTCTTTTCTCA
	<i>IL-8</i>	CATCTTCGTCCGTCCTGTG	GACTGCTATCACTTCCTTTCTGTTGC
	<i>IL-1β</i>	GAAATGCCACCTTTTGACAGTG	TTAACTCATCCCGTGCCATAAC
Mouse	<i>ICAM</i>	CAATTTCTCATGCCGCACAG	AGCTGGAAGATCGAAAGTCCG
	<i>TNF-α</i>	ATGTCTCAGCCTCTTCTCATTC	GCTTGTCACTCGAATTTTGAGA
	<i>GAPDH</i>	TGAAGGTCGGTGTGAACGG	CGTGAGTGGAGTCATACTGGAA
	<i>β-actin</i>	TTG CTG ACA GGA TGC AGA AG	ACATCTGCTGGAAGGTGGAC
	<i>IL-6</i>	TGCAATAACCACCCCTGACC	GTGCCCATGCTACATTTGCC
	<i>IL-8</i>	ACTGAGAGTGATTGAGAGTGGAC	AACCCTCTGCACCCAGTTTTTC
Human	<i>GAPDH</i>	CAATGACCCCTTCATTGACC	TTGATTTTGGAGGGATCTCG
	<i>β-actin</i>	CCTGACTGACTACCTCATGAAG	GACGTAGCACAGCTTCTCCTTA

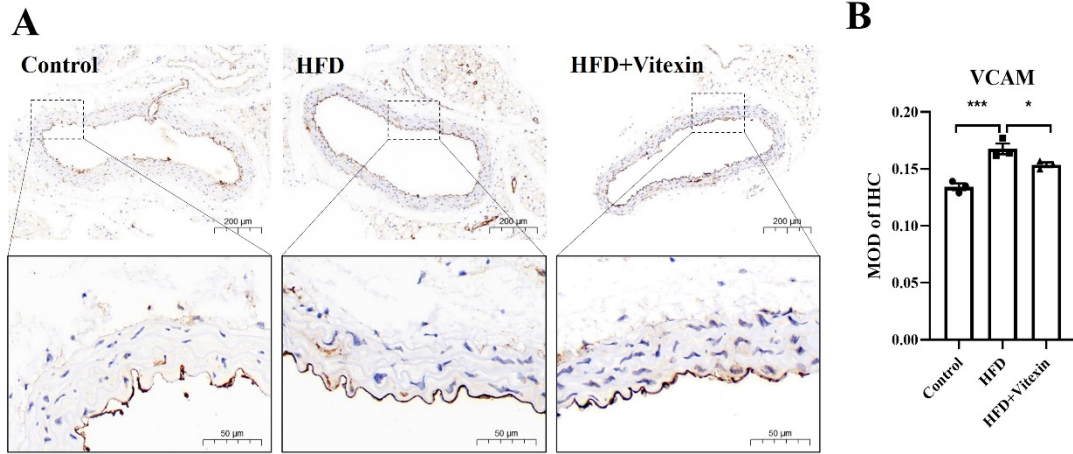


Fig. S1. (A) Immunohistochemical images of VCAM. (B) Quantitative analysis of VCAM immunohistochemical images. Numbers indicate mean \pm SEM (n = 3). * P < 0.05, * P < 0.001.**