

Supporting Figures

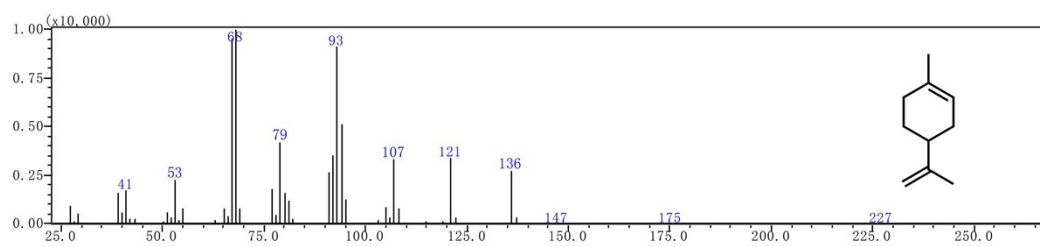


Fig. S1 Mass spectrum (EI) of limonene

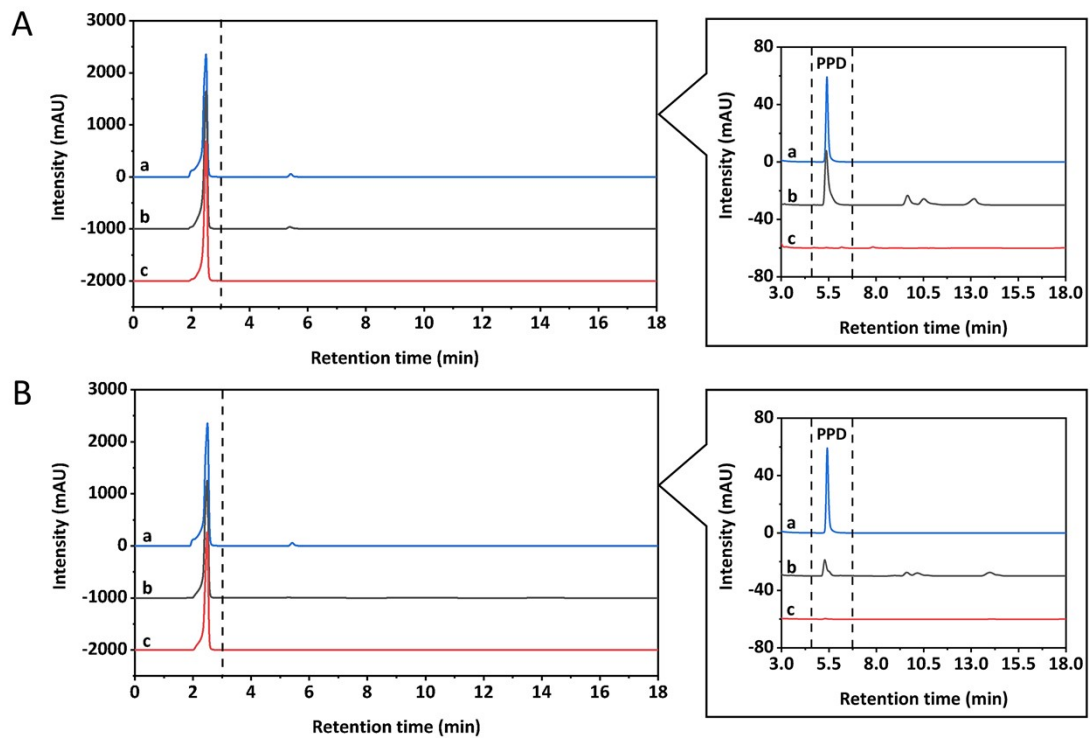


Fig. S2 A: The overall HPLC chromatograms of PPD standard (a), hair dye sewage sample (b), hair dye sewage sample treated with BC/SE-OPEO (c); B: The overall HPLC chromatograms of PPD standard (a), dyed hair extraction sample (b), dyed hair sample treated with BC/SE-OPEO (c).

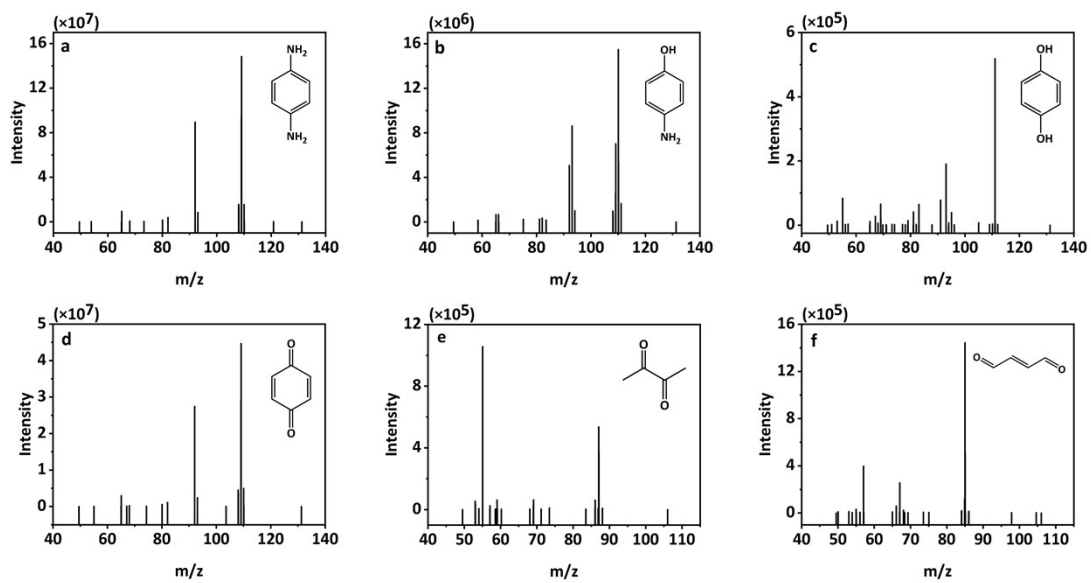


Fig. S3 Secondary mass spectrometry of *p*-phenylenediamine (a), *p*-aminophenol (b), hydroquinone (c), *p*-benzoquinone (d), 2,3-butanedione (e) and 1,4-butylene ketone (f).