

Electronic Supplementary Information for JAAS publication

Determination of chlorine in Hf precursors measured by high-resolution inductively coupled plasma mass spectrometry

Hanul Lee ^{a,b}, Seongkyong Joo ^{a,b} and Dongchul Suh ^{*a}

^a Department of Chemical Engineering, Hoseo University, Asan, Republic of Korea.

^b JKC Corporation, Cheonan, Republic of Korea.

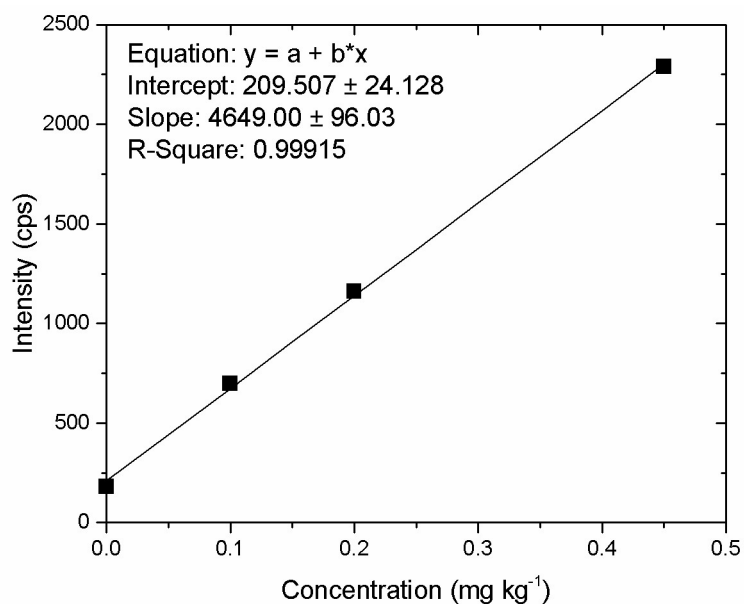


Figure S1 ICP-OES calibration curve using 10 mg kg⁻¹ Hf CRM.

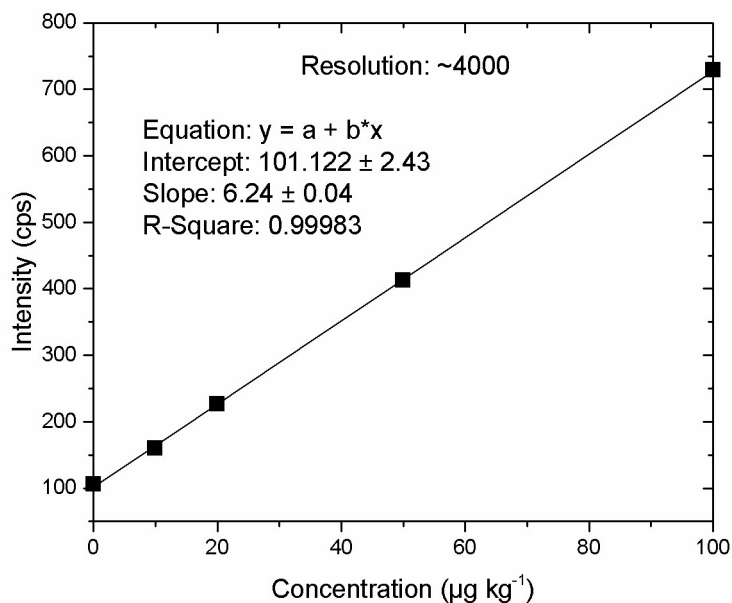


Figure S2 Calibration curve of ³⁵Cl ion from trichlorophenol in NMP.

Figure S3 Hf deposition on cones and orifice clogging (standard addition method).

ordinary cone

Hf 2100 mg kg⁻¹

Hf 21000 mg kg⁻¹

