

Supplementary Material

Automated standard dilution analysis using a four-port switching valve for fast inductively coupled plasma optical emission spectrometry determinations

Jesse R. Ingham, Bradley T. Jones and George L. Donati*

Department of Chemistry, Wake Forest University,

Salem Hall, Box 7486, Winston-Salem, NC 27109

*Corresponding author. Tel.: +1 336 758 4815; fax: +1 336 758 4656.

E-mail address: donatigl@wfu.edu (G. L. Donati)

Figure S1. SV4 system with sample loop and the four ports used for SDA-ICP-OES. See main text and Fig. 2 for additional details.

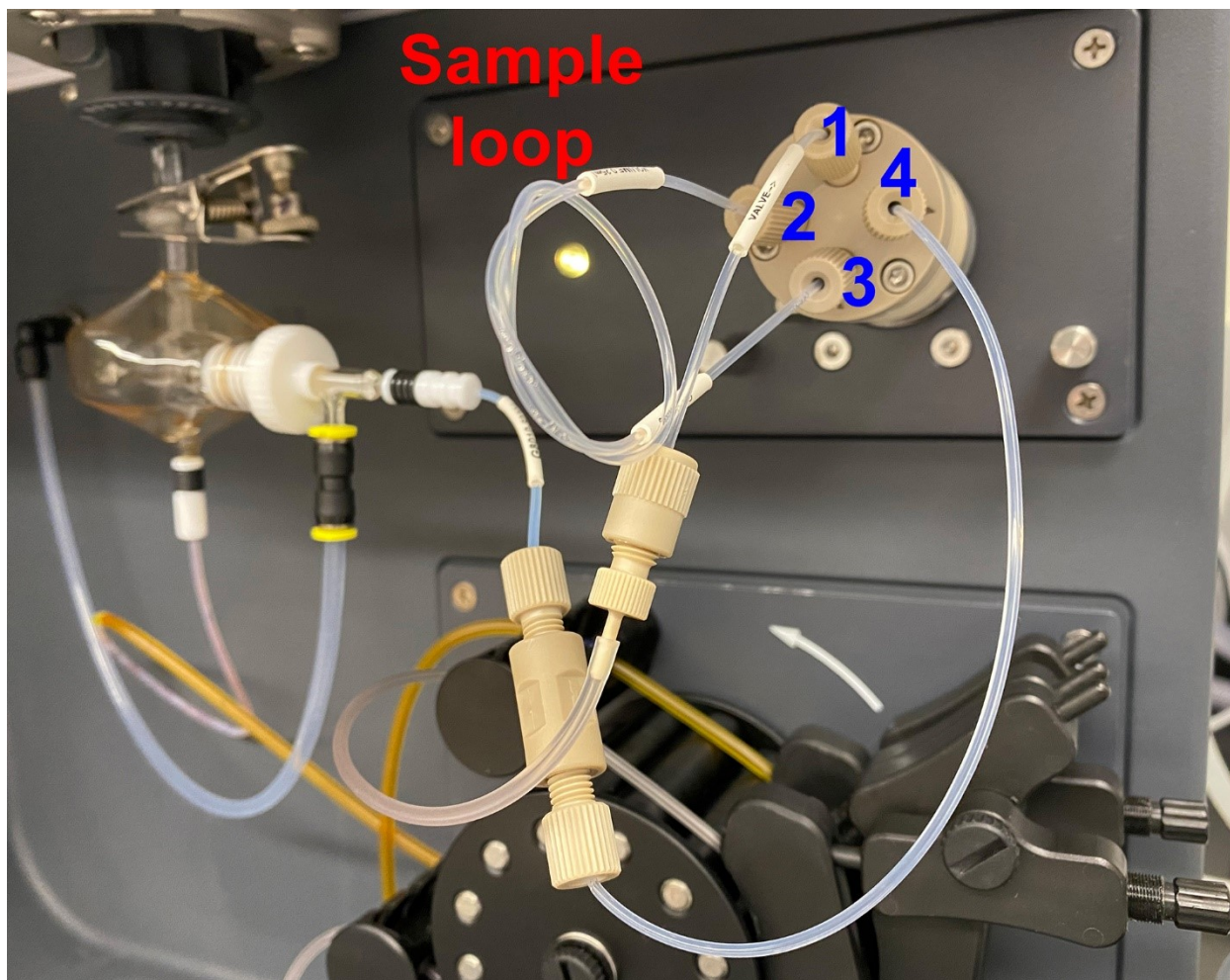


Fig. S1. SV4 system with sample loop and the four ports (1 - 4) used for SDA-ICP-OES. See main text and Fig. 2 for additional details.