



Figure S1. Backscattered electron-imaging result for NJU-Ba-1 and FJ barite. NJU-Ba-1 barite contains small amounts of tiny calcite inclusions, while FJ is nearly pure barite mineral with minimal inclusions.

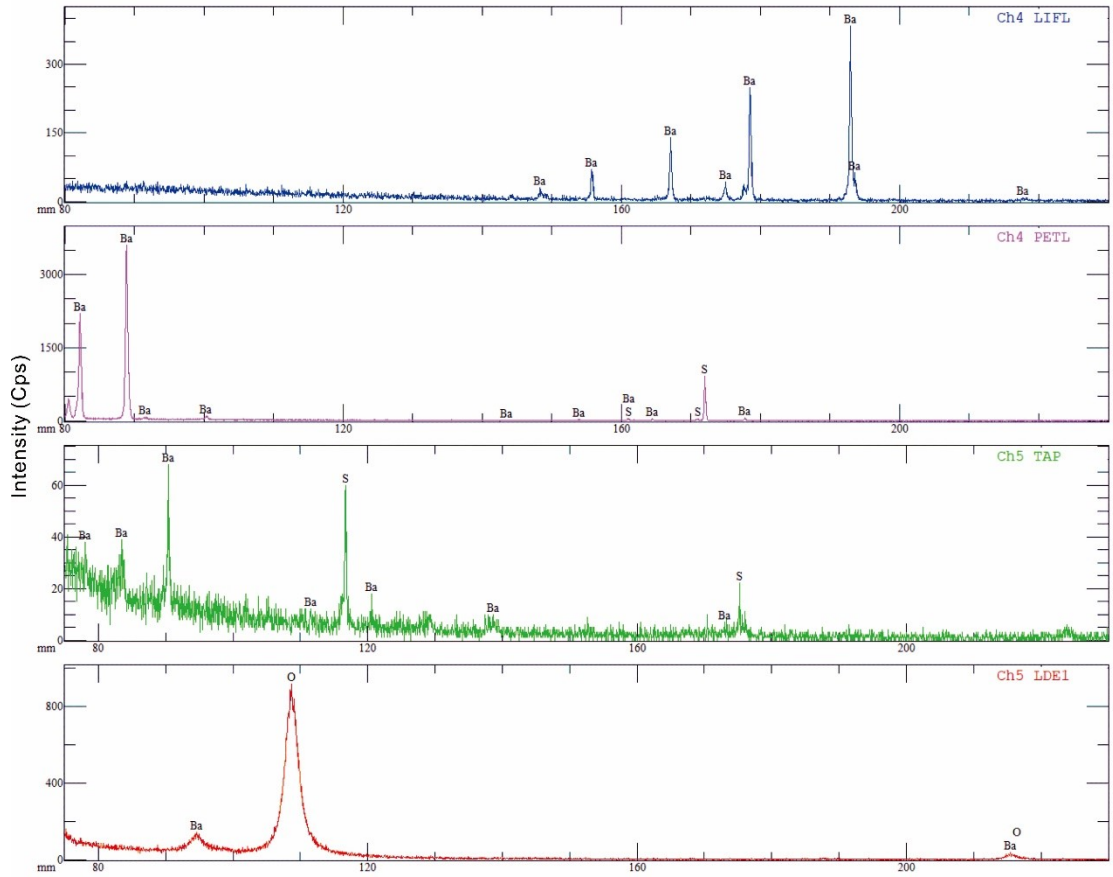


Figure S2. All element scanning wave spectra of NJU-Ba-1 barite.

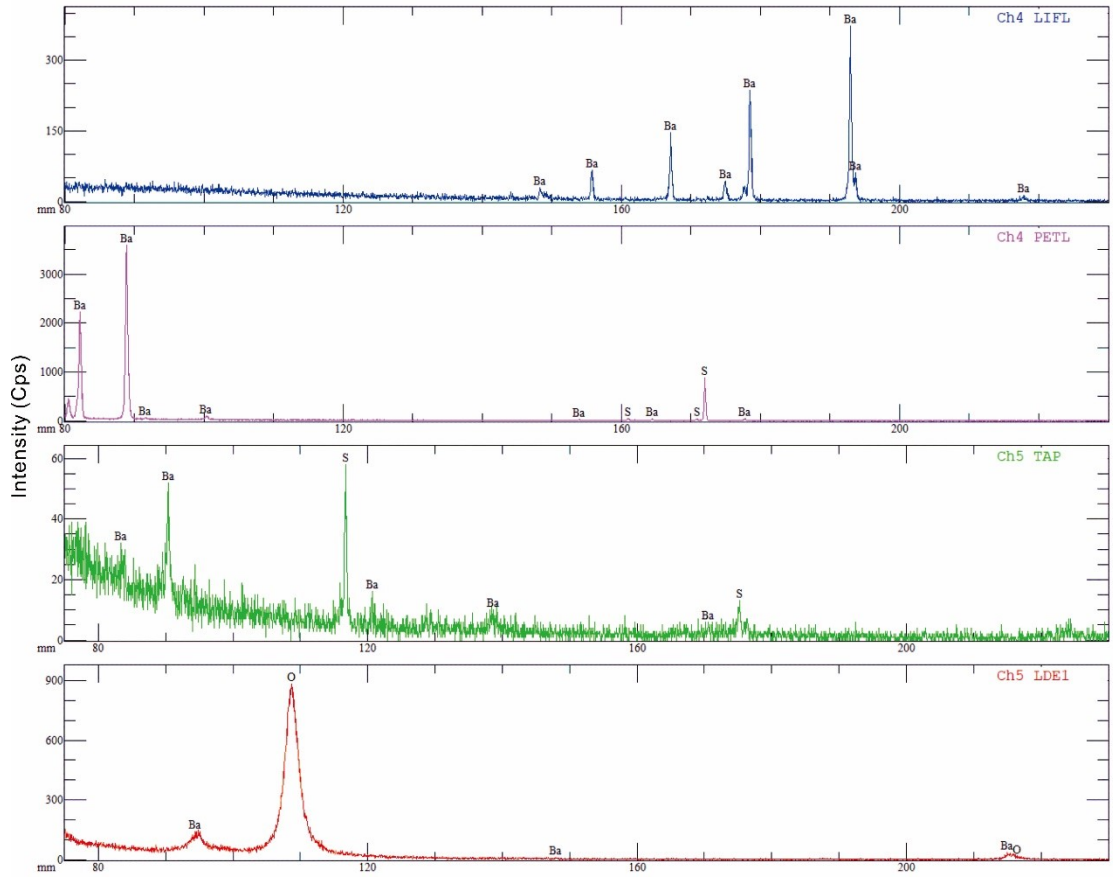


Figure S3. All element scanning wave spectra of FJ barite.

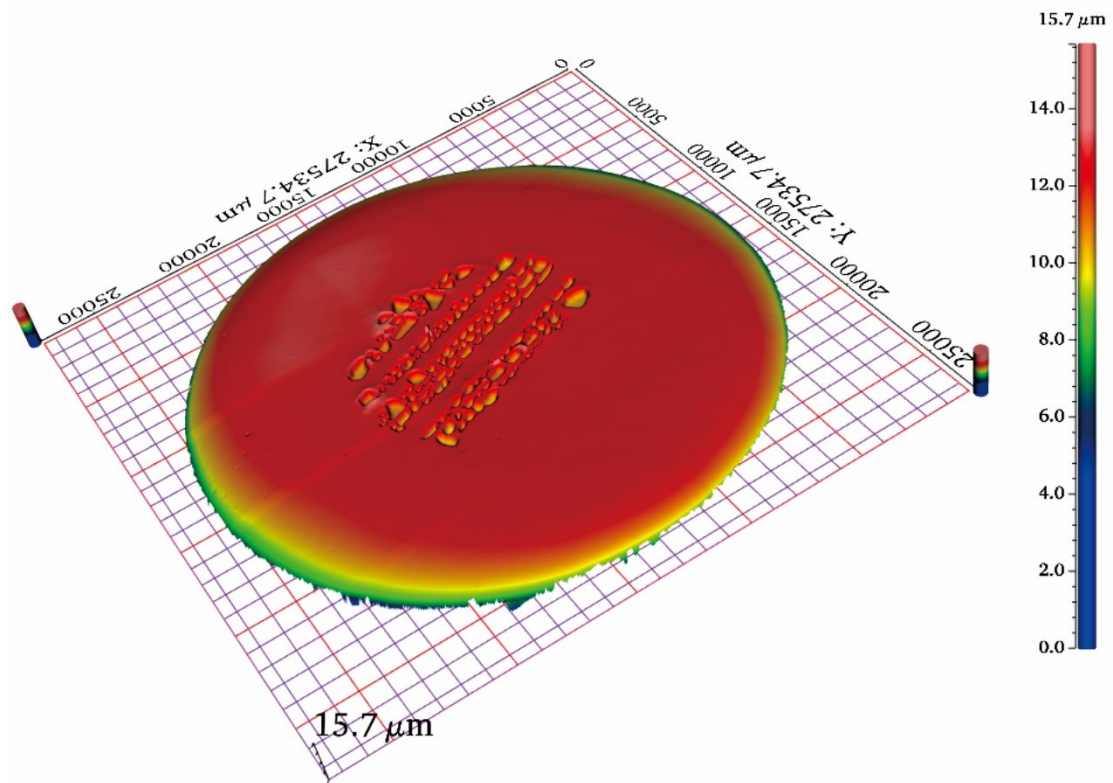


Figure S4. Surface topography of barite mount measured using a profilometer.

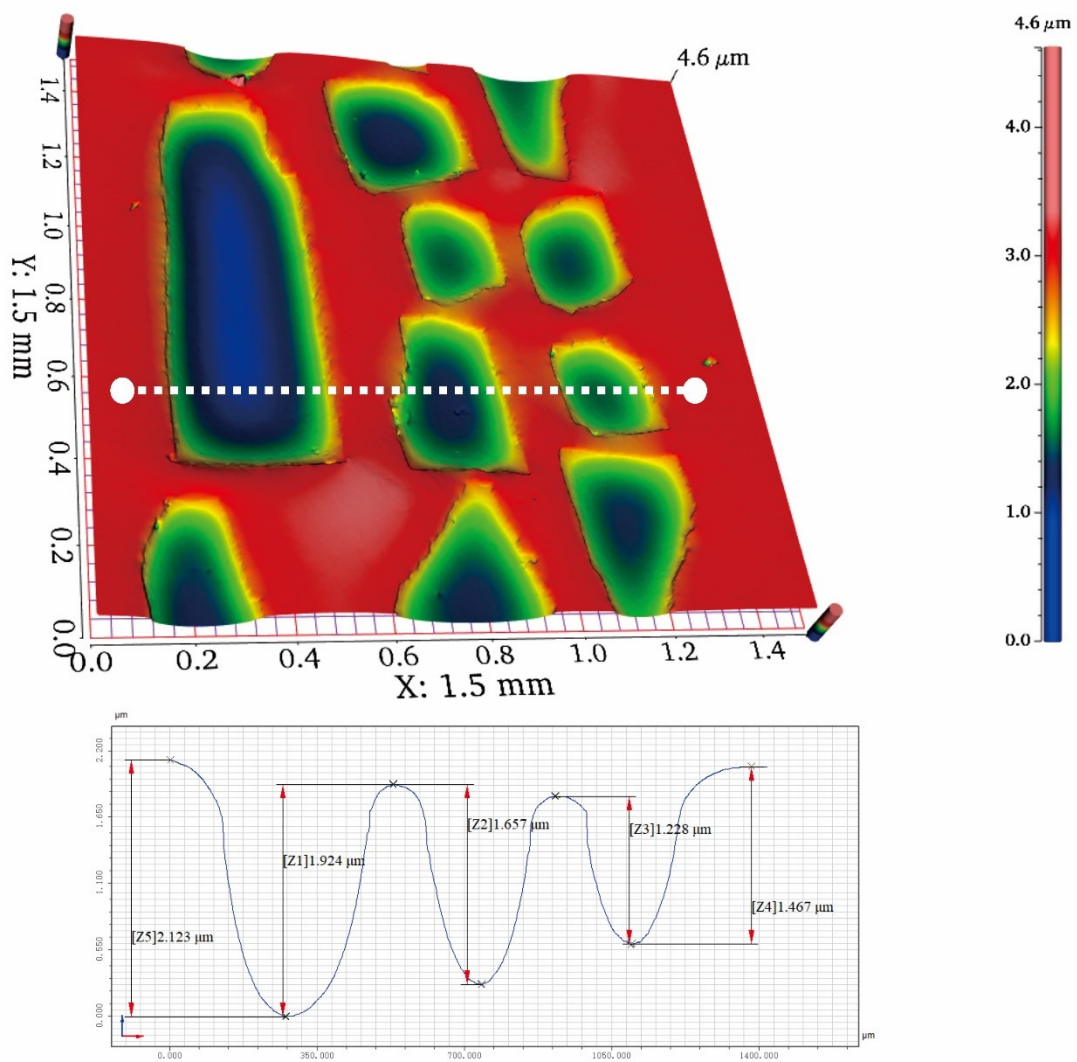


Figure S5. Surface topography of barite fragments measured using a profilometer.