

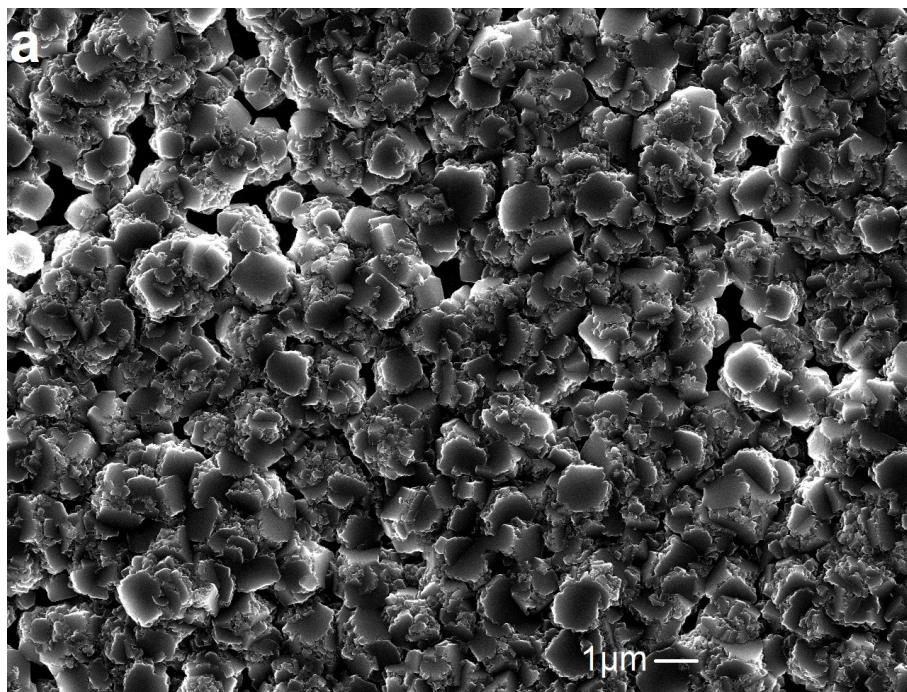
Electronic Supplementary Information:

Structural analyses of carbon films deposited at different total mass rates in hot-filament CVD system

Mubarak Ali

Department of Physics, COMSATS University Islamabad, Islamabad Campus, 45550,
Park Road, Pakistan, E-mail: mubarak74@mail.com, mubarak60@hotmail.com,

<http://orcid.org/0000-0003-1612-6014>



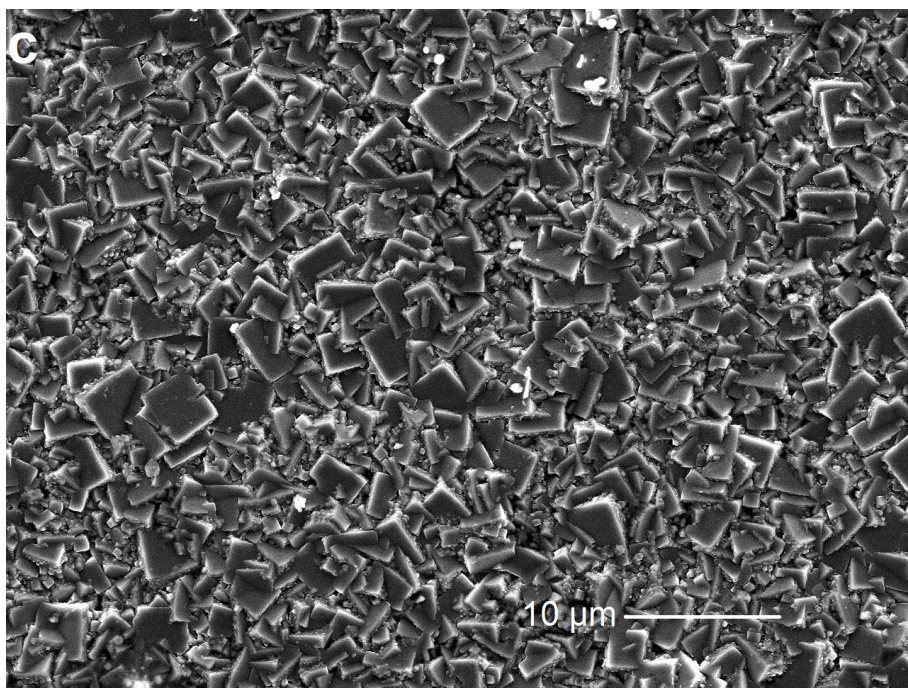
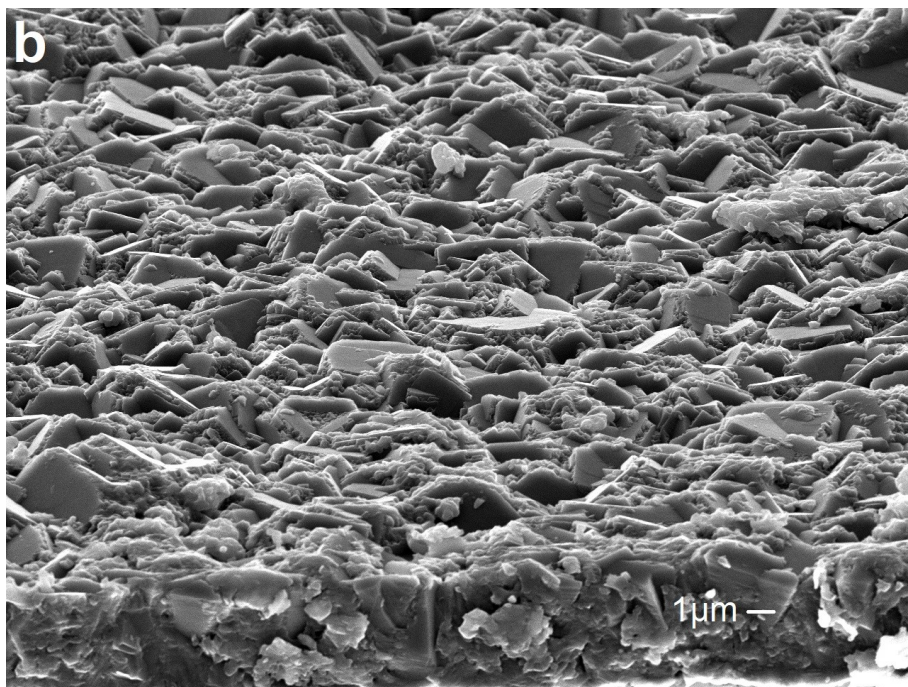


Figure S1: Low-magnification microscopic images of the carbon films deposited at different total mass flow rates (a) 200 sccm, (b) 300 sccm, and (c) 400 sccm

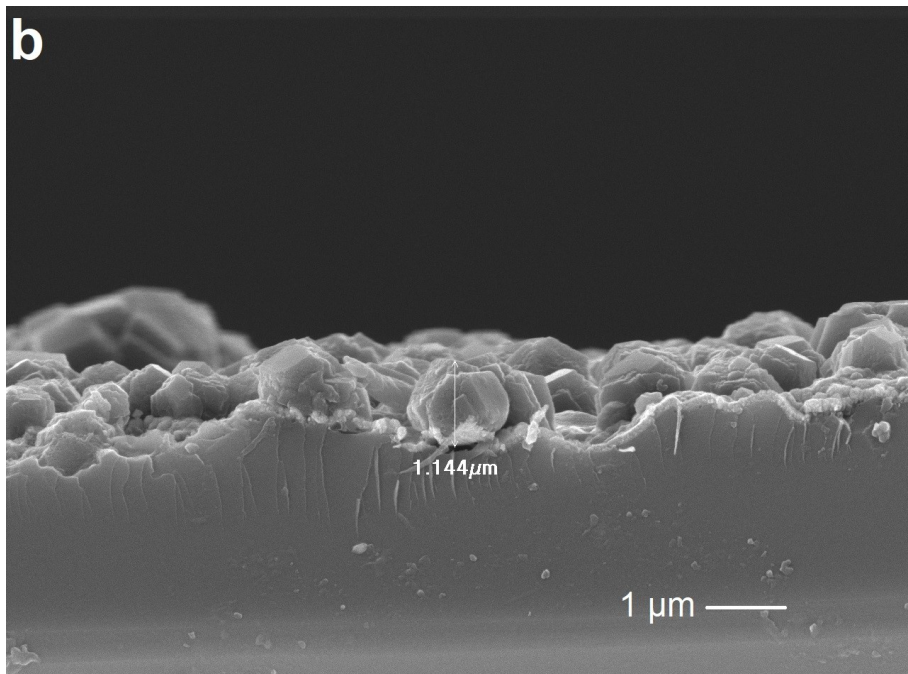
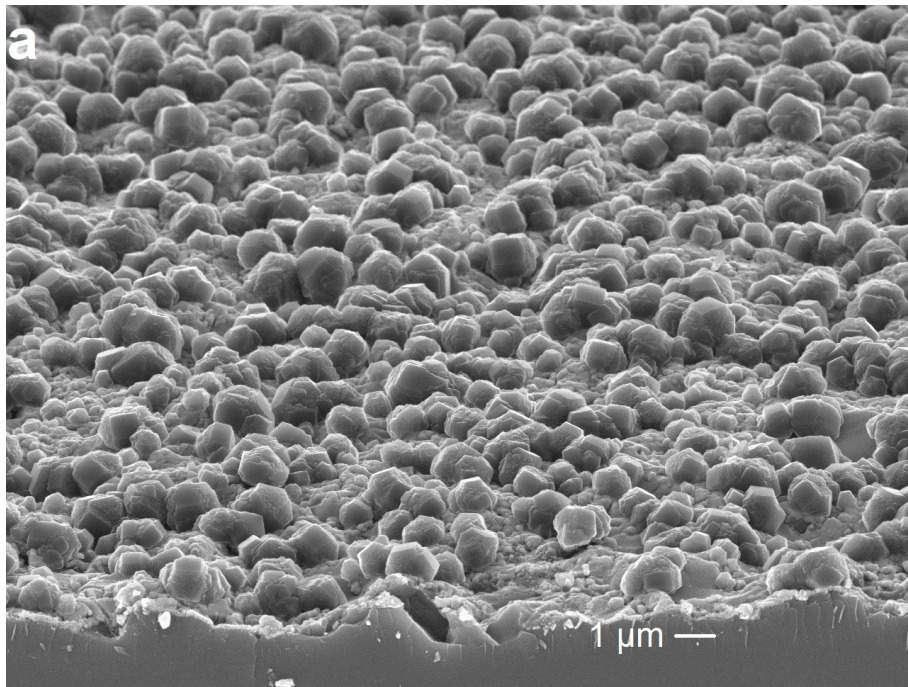


Figure S2: (a) surface and (b) fractured cross-sectional images of the carbon film deposited at 100 sccm total mass flow rate

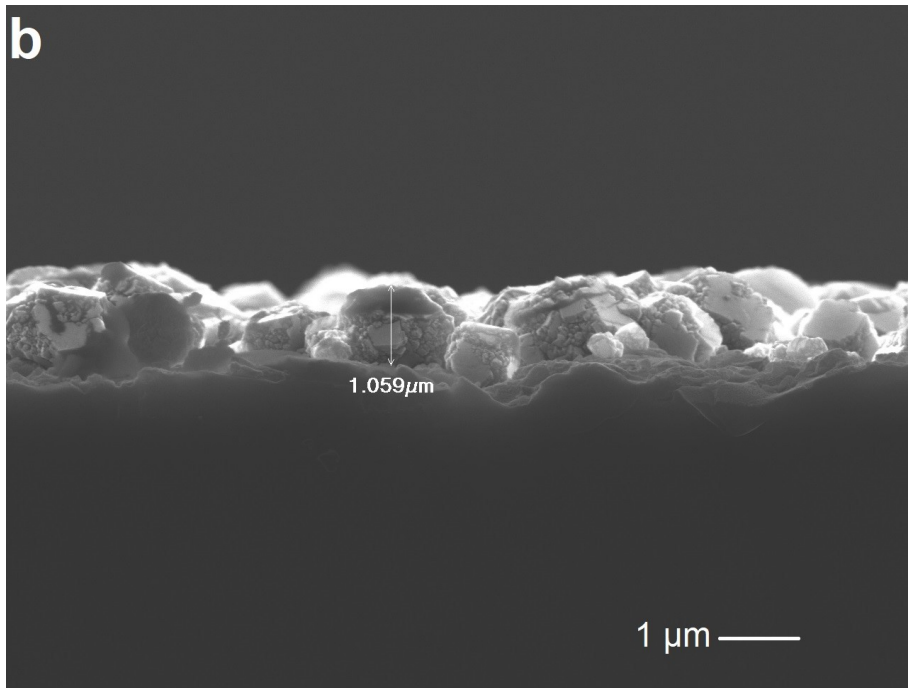
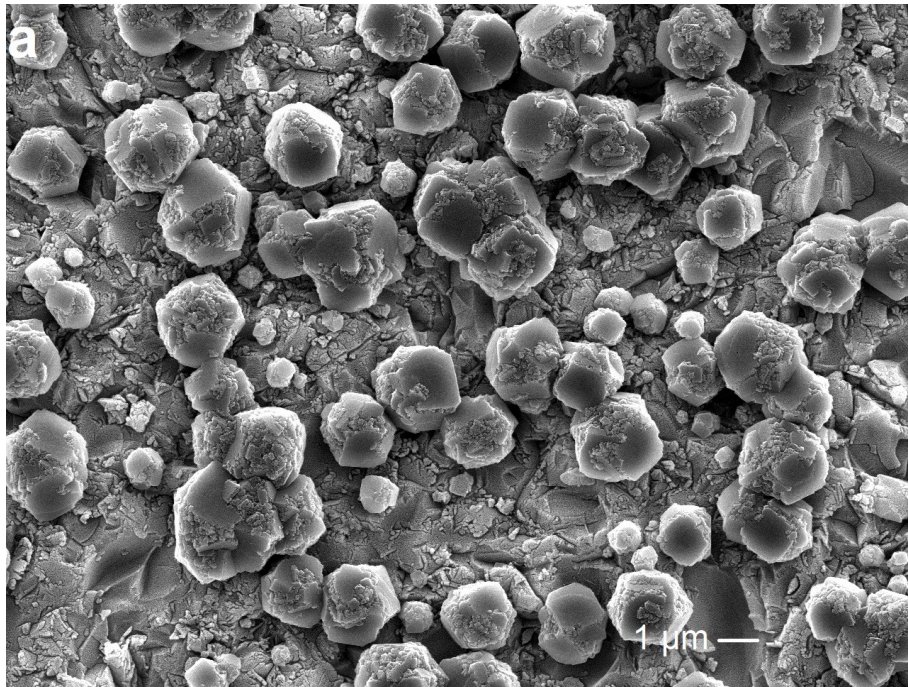


Figure S3: (a) surface and (b) fractured cross-sectional images of the carbon film deposited at 75 sccm total mass flow rate