

1 **pH Sensitive Peptide Hydrogel Encapsulating Anti-**
2 **angiogenesis Drug Conbercept and Chemotherapy Drug**
3 **DOX for the Combined Treatment of Retinoblastoma**

4
5 Wen Fan¹, Mingkang Chen¹, Faisal Raza², Hajra Zafar², Faryal Jahan³, Yuejian
6 Chen⁴, Lexin Ge¹, Minyan Yang^{5,*} and Yiqun Wu^{6,*}

7
8 ¹Department of Ophthalmology, The First Affiliated Hospital of Nanjing Medical
9 University, Nanjing, 210029, China

10 ²School of Pharmacy, Shanghai Jiao Tong University, Shanghai 200240, China

11 ³Shifa Tameer-e-Millat University Islamabad, Pakistan

12 ⁴Nanjing iChemBridge Pharmaceutical Technology Co. , Ltd

13 ⁵The Affiliated Taizhou People's Hospital of Nanjing Medical University, Taizhou,
14 225300, China.

15 ⁶School of Pharmacy, China Pharmaceutical University, Nanjing, 211100, China

16

17 **Correspondence:**

18 **Yiqun Wu**

19 School of Pharmacy, China Pharmaceutical University, Nanjing, 211100, China

20 Tel:15951715266.

21 E-mail: WuyiqunCPU@163.com.

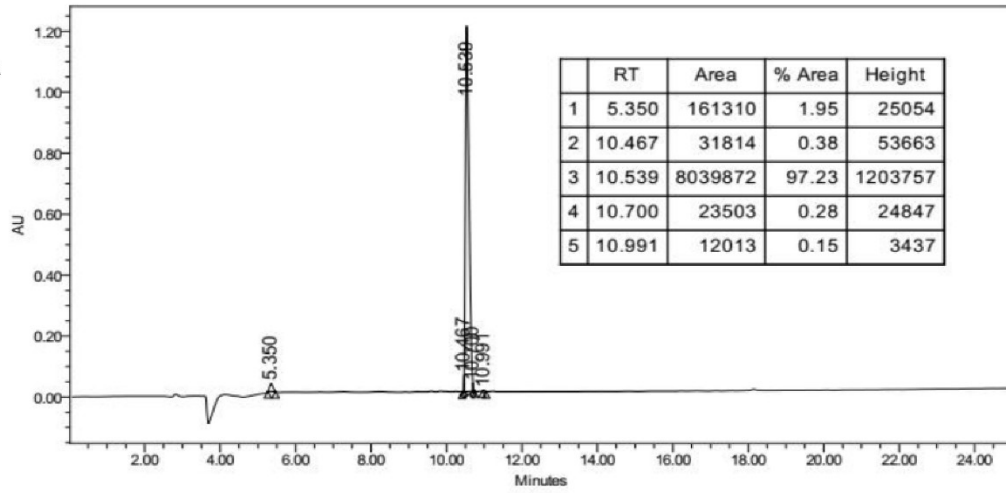
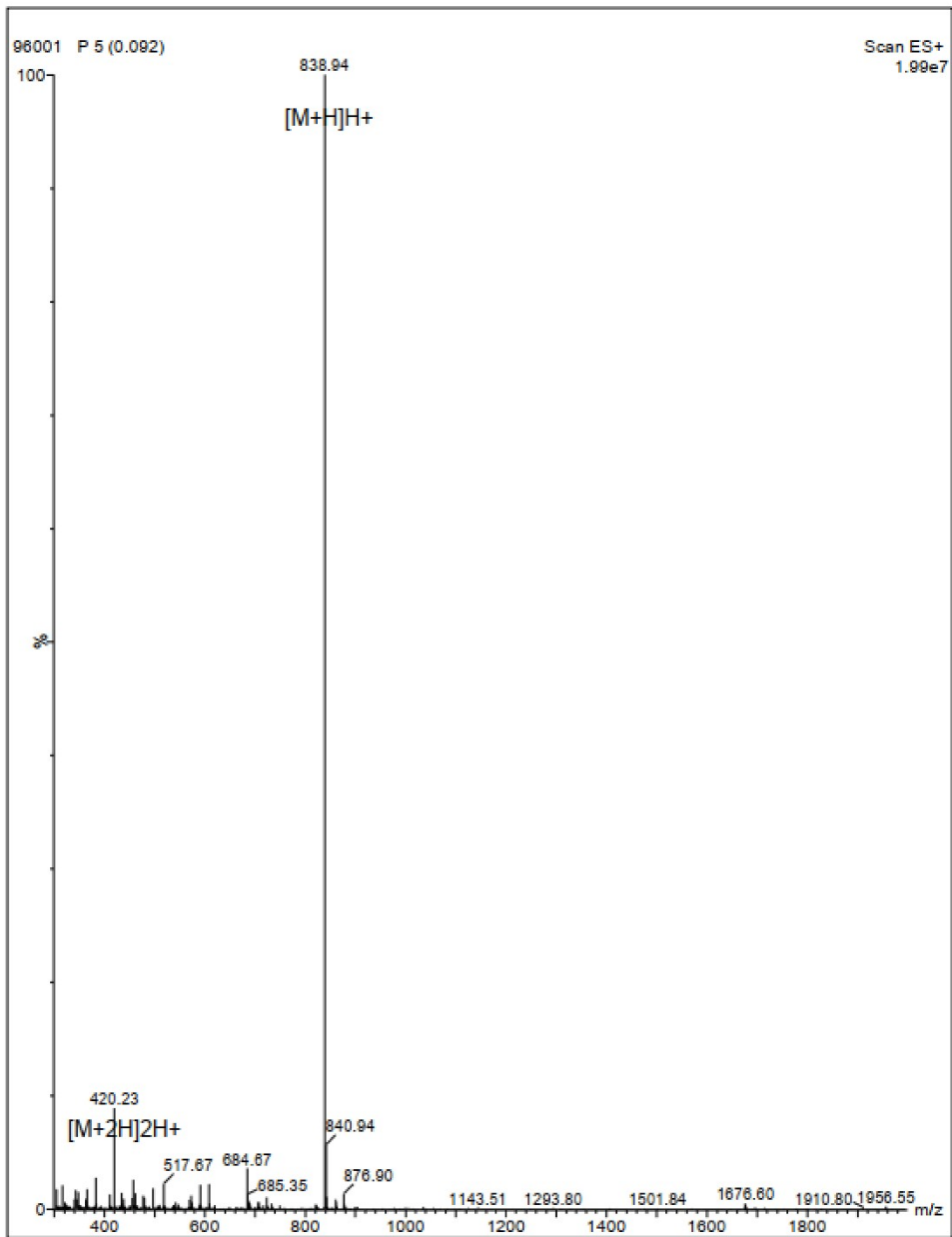
22

23 **Minyan Yang**

24 The Affiliated Taizhou People's Hospital of Nanjing Medical University, Taizhou,
25 225300, China.

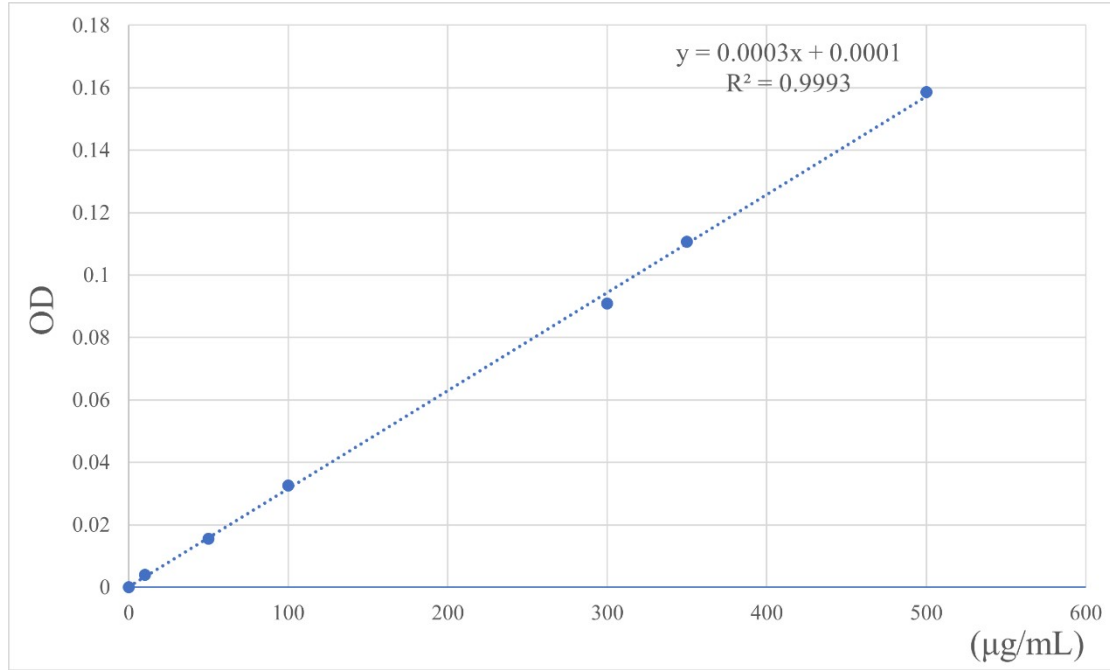
26 E-mail: ymyspring@163.com.

27

A**B**

29 Fig. S1 (A) The HPLC spectrum of DDIII OH peptide. (B) The MS spectrum of
30 DDIII OH peptide.

31

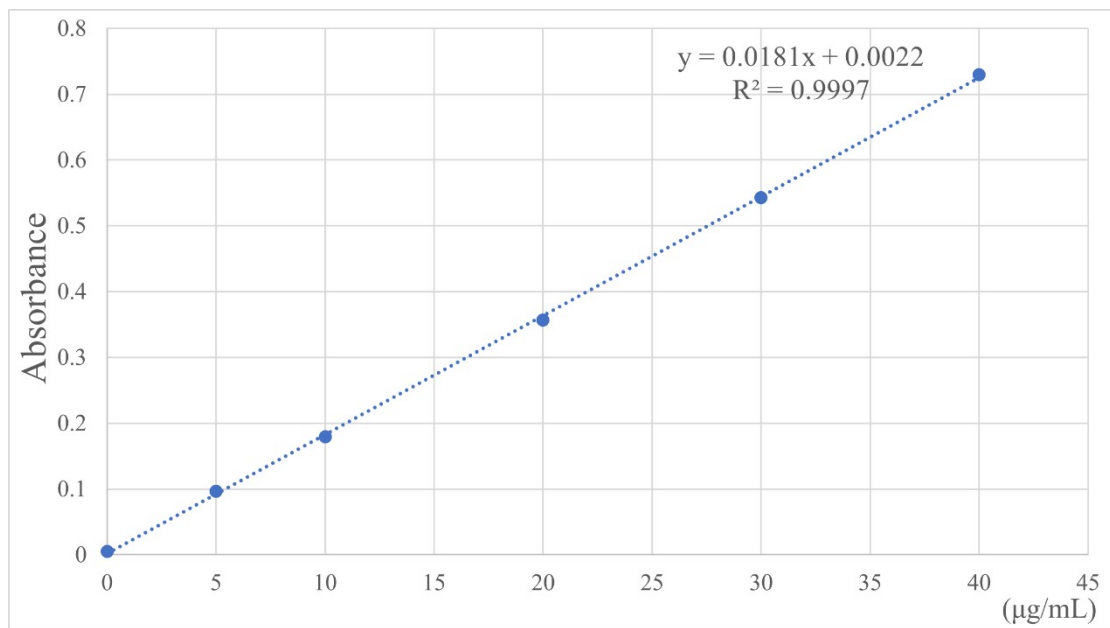


32

33

Figure. S2 Standard BCA curve.

34

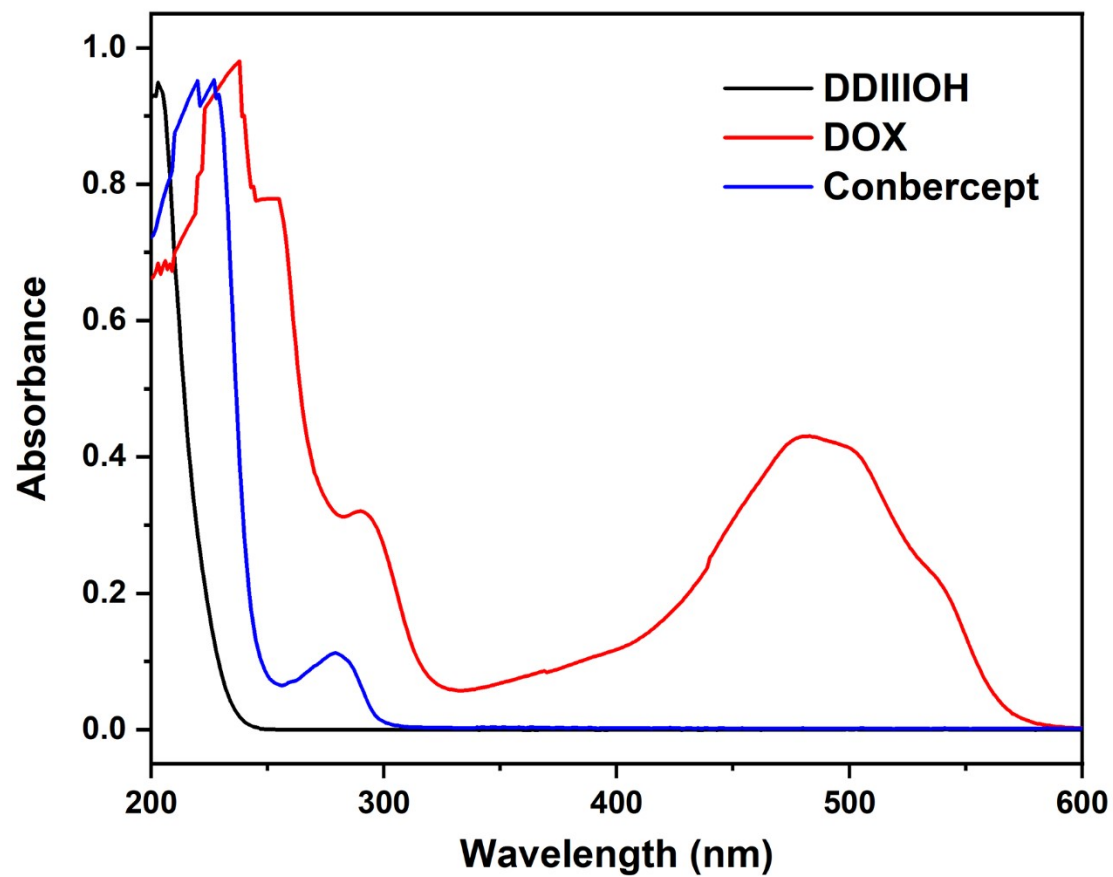


35

36

Figure. S3 Standard UV/vis curve of DOX.

37

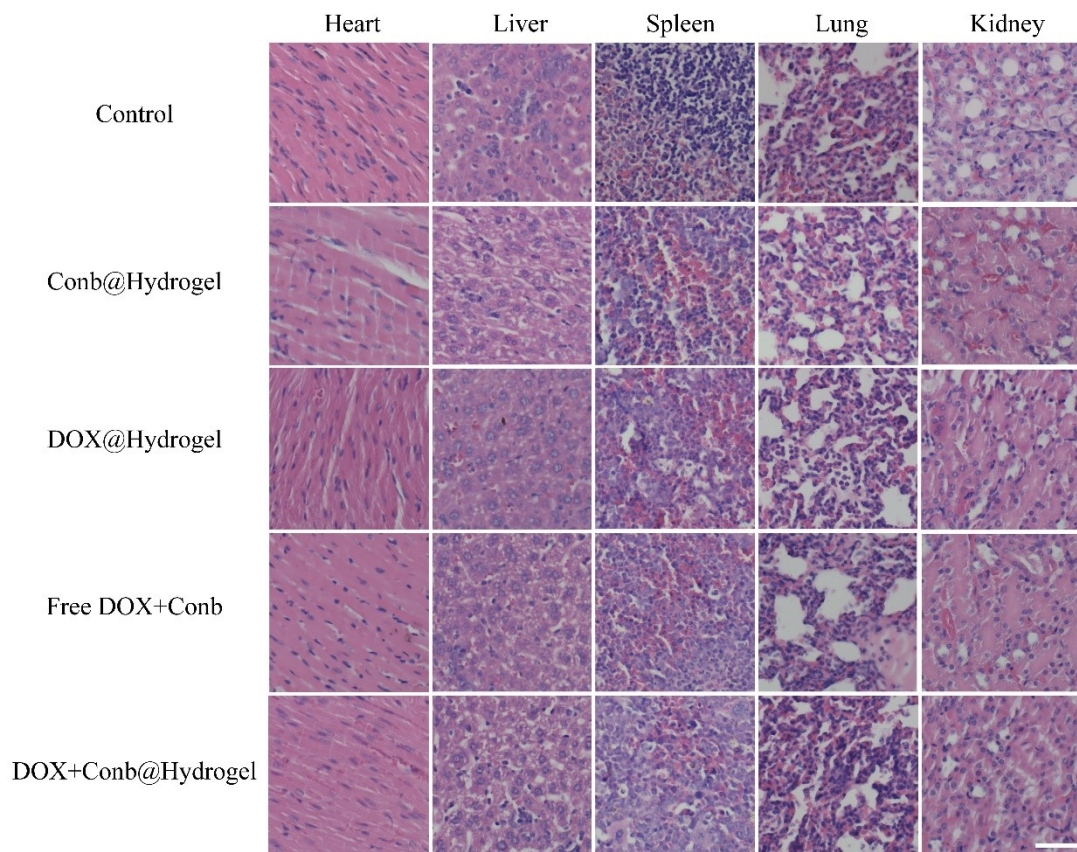


38

39

Figure. S4 UV/vis spectrum of DDIIIIOH peptide, DOX and conbercept.

40



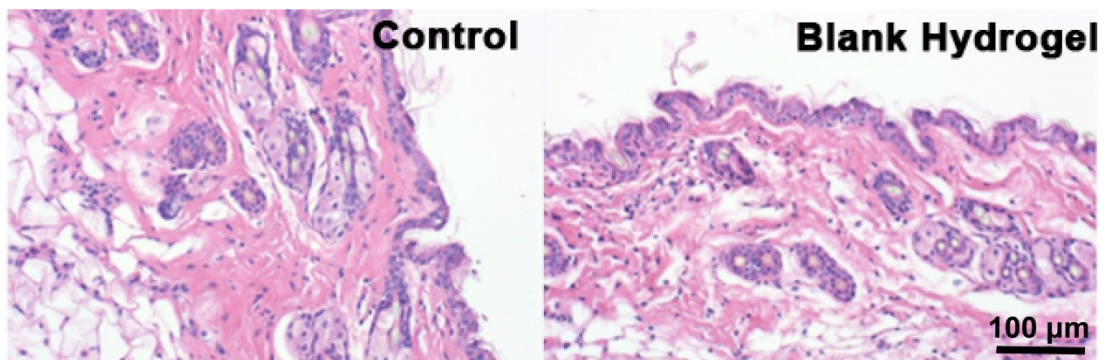
41

42 Fig. S5 H&E staining of heart, liver, spleen, lung and kidney collected from mice.

43

Scale bar was 50 μ m.

44



45

46 Fig. S6 H&E staining of skin tissue dissected from mouse in control group (without
47 hydrogel administration) and mouse administrated with blank hydrogel for 10 days.

48

Scale bar: 100 μ m.