

Supporting Information

catalogue

Figure S1. Compound 4 - ¹ H NMR -DMSO	1
Figure S2. Compound 4 - ¹³ C NMR -DMSO	1
Figure S3. 5a - ¹ H NMR-DMSO	2
Figure S4. 5a - ¹³ C NMR-DMSO	2
Figure S5. 5a - ¹³ C NMR-MeDH	3
Figure S6. 5b - ¹ H NMR-DMSO	4
Figure S7. 5b - ¹³ C NMR-DMSO	4
Figure S8. 5c - ¹ H NMR-DMSO	5
Figure S9. 5c - ¹³ C NMR-DMSO	5
Figure S10. 5d - ¹ H NMR-DMSO	6
Figure S11. 5d - ¹³ C NMR-DMSO	6
Figure S12. 5e - ¹ H NMR-DMSO	7
Figure S13. 5e - ¹³ C NMR-DMSO	7
Figure S14. 5f - ¹ H NMR-DMSO	8
Figure S15. 5f - ¹³ C NMR-DMSO	8
Figure S16. 5g - ¹ H NMR-DMSO	9
Figure S17. 5g - ¹³ C NMR-DMSO	9
Figure S18. 5a -HRMS	10
Figure S19. 5b -HRMS	10
Figure S20. 5c -HRMS	11

Figure S21. 5d -HRMS	11
Figure S22. 5e -HRMS	12
Figure S23. 5f -HRMS	12
Figure S24. 5g -HRMS.....	13

Figure S1. Compound 4-¹H NMR -DMSO

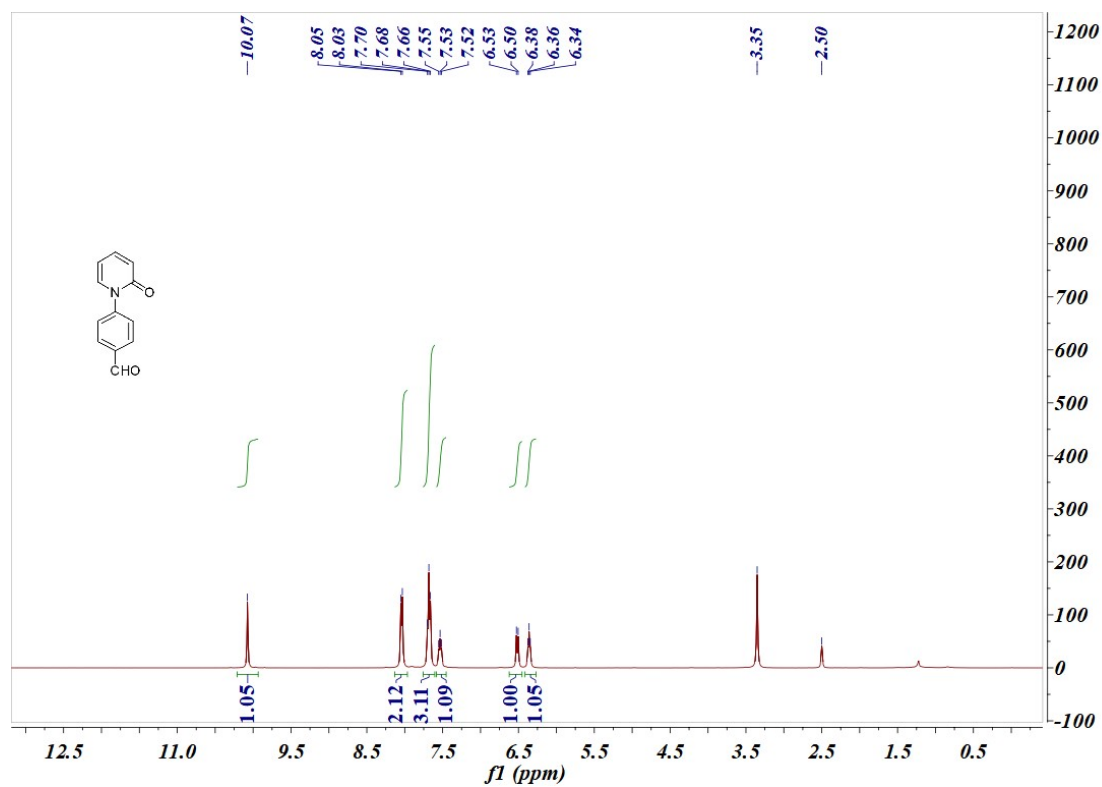


Figure S2. Compound 4-¹³C NMR -DMSO

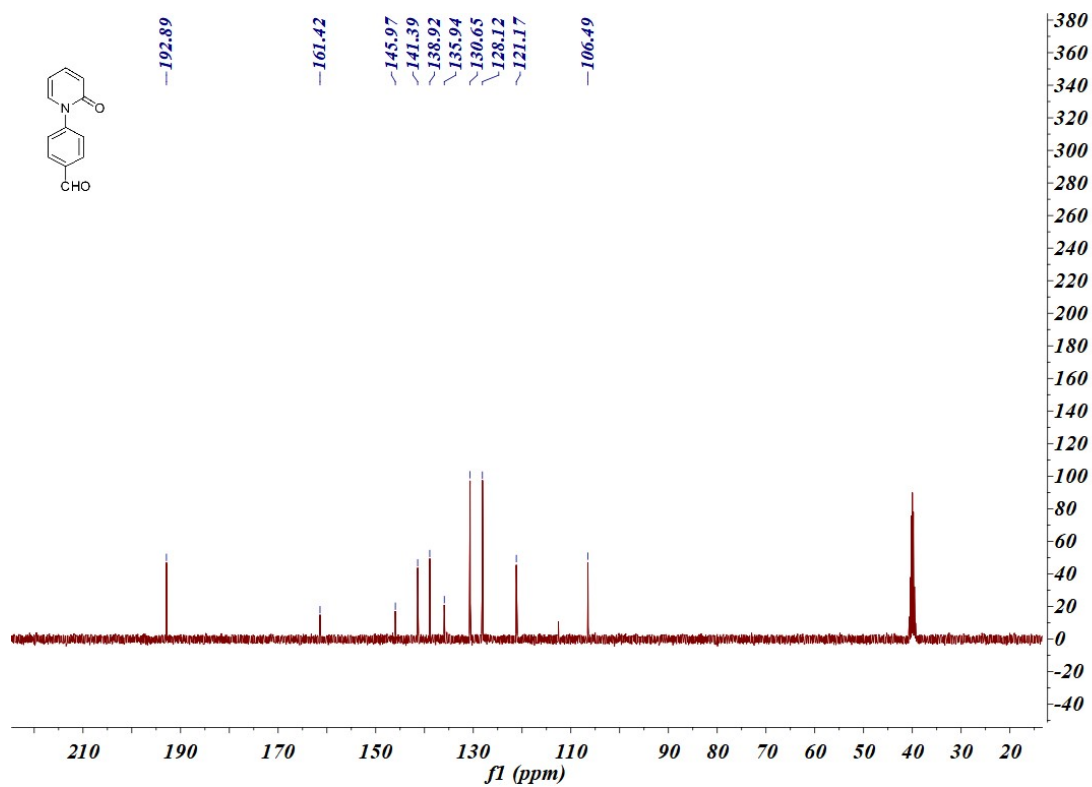


Figure S3.5a-¹H NMR-DMSO

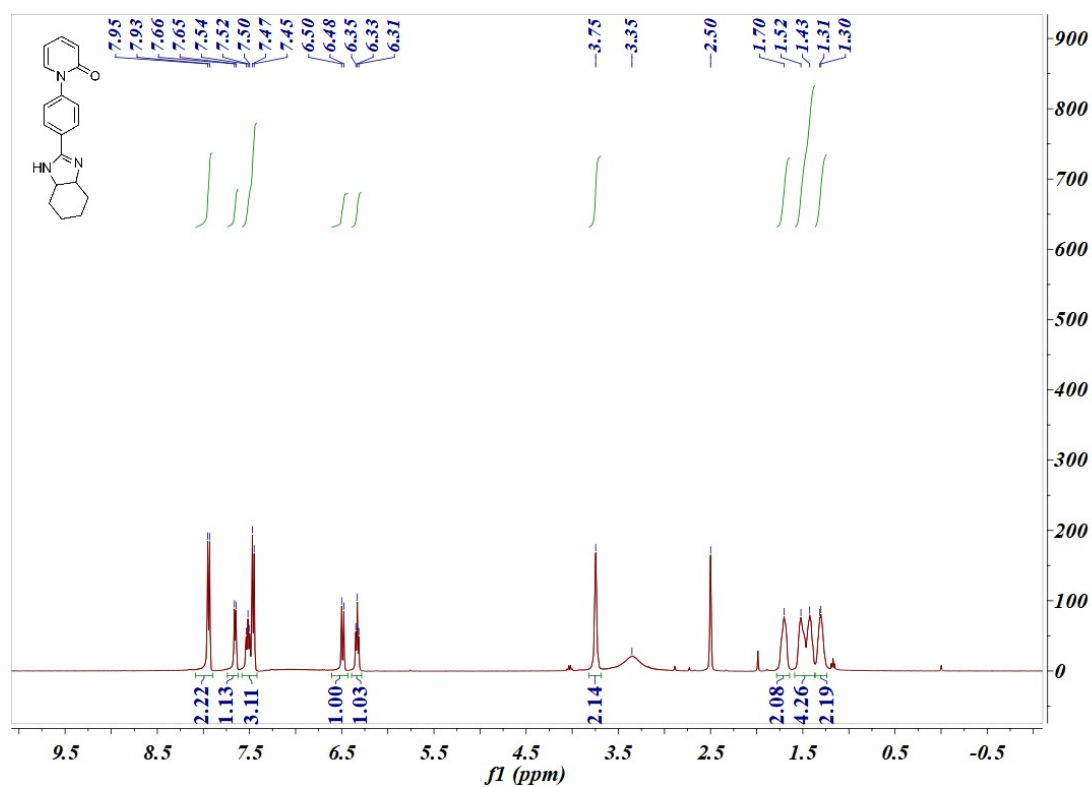


Figure S4.5a-¹³C NMR-DMSO

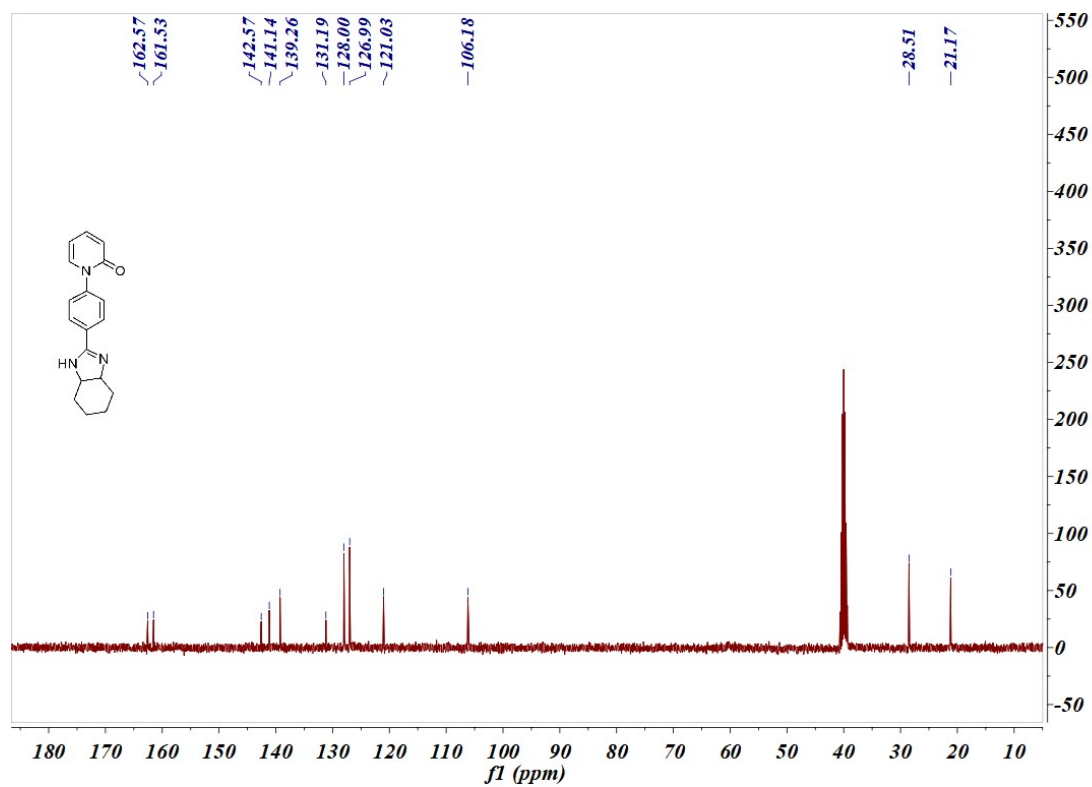
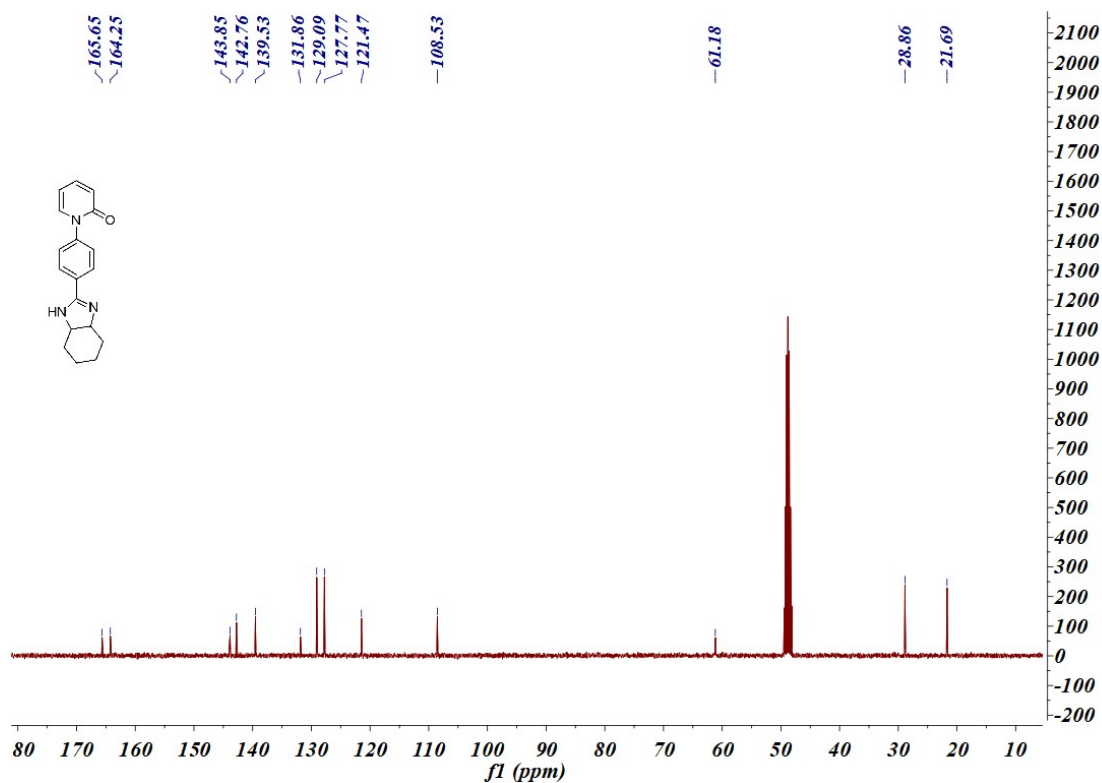


Figure S5.5a-¹³C NMR-MeDH



Note: The number of carbons Sp³ for the ¹³C NMR of compound 5a-c, maybe because of the high frequency interconversion on both sides of the carbon-nitrogen double bond, the chemical environment of the carbon directly attached to the nitrogen atom is consistent. Therefore we're going to have fewer Sp³ carbons.

Figure S6.5b-¹H NMR

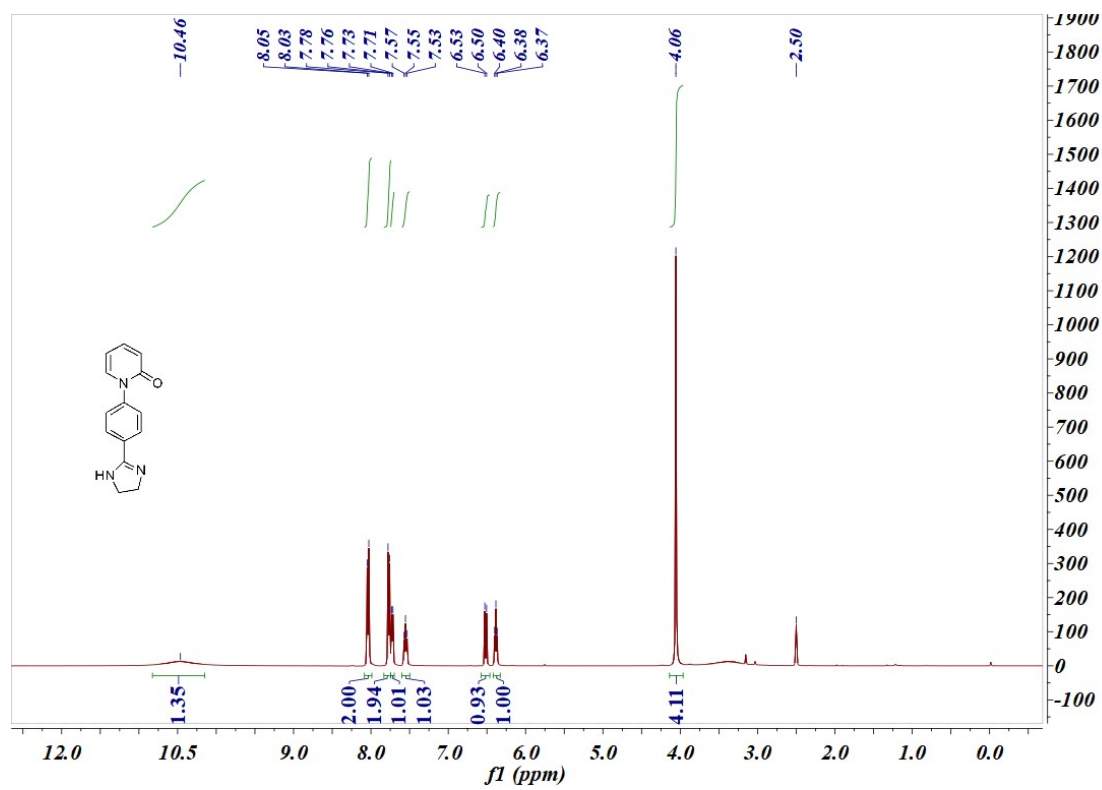


Figure S7.5b-¹³C NMR

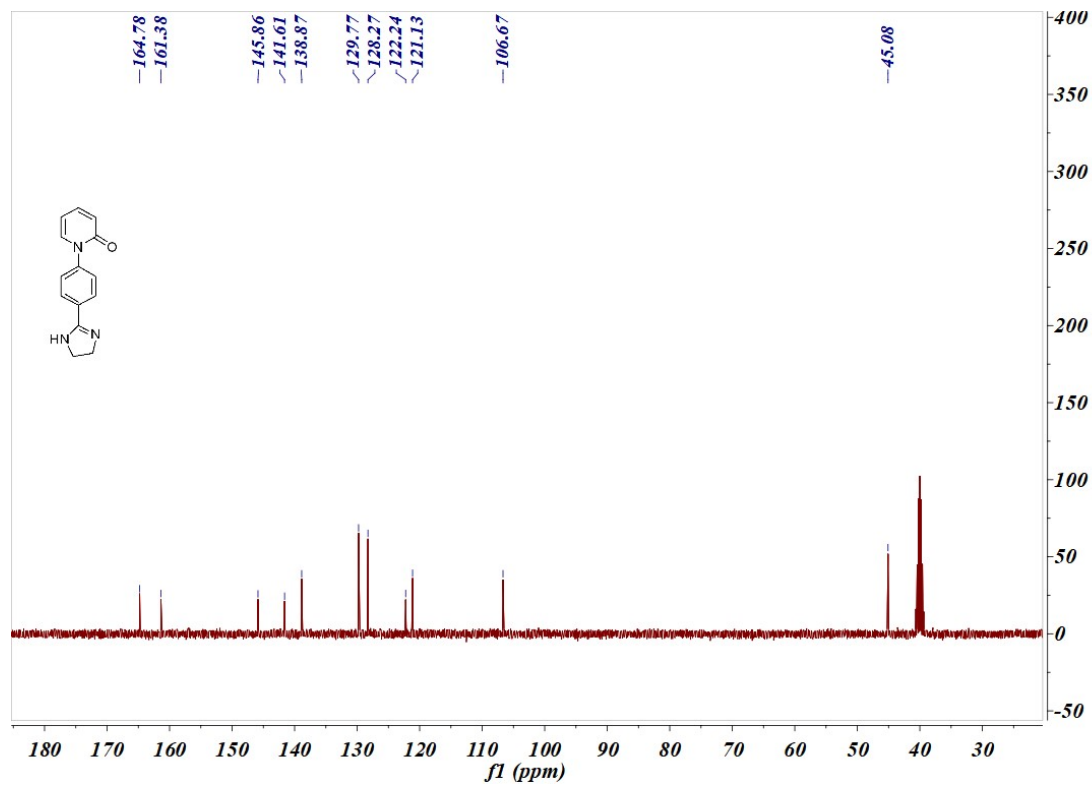


Figure S8.5c-¹H NMR

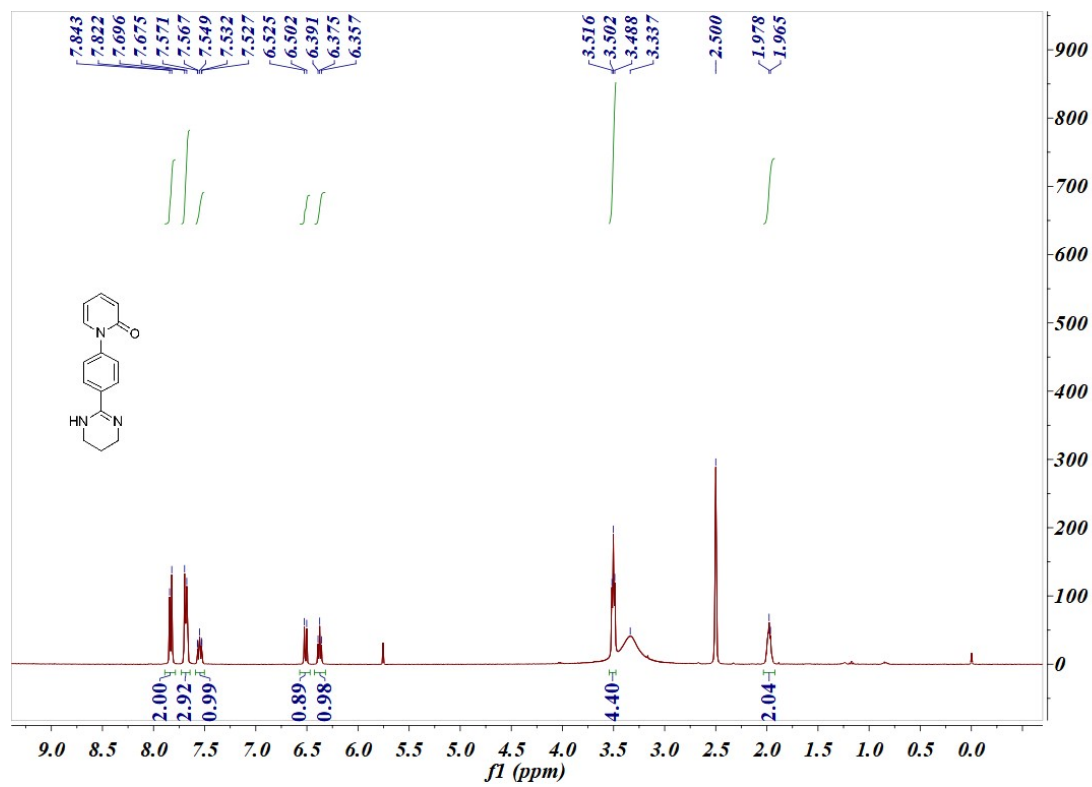


Figure S9.5c-¹³C NMR

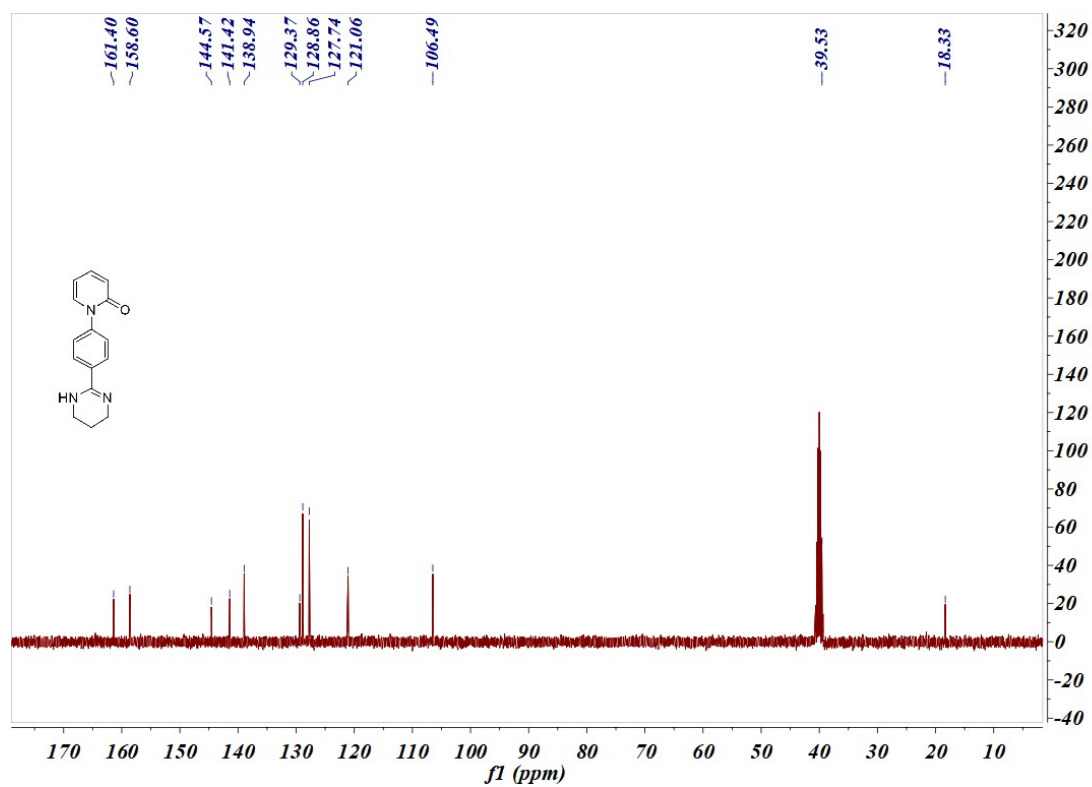


Figure S10.5d-¹H NMR

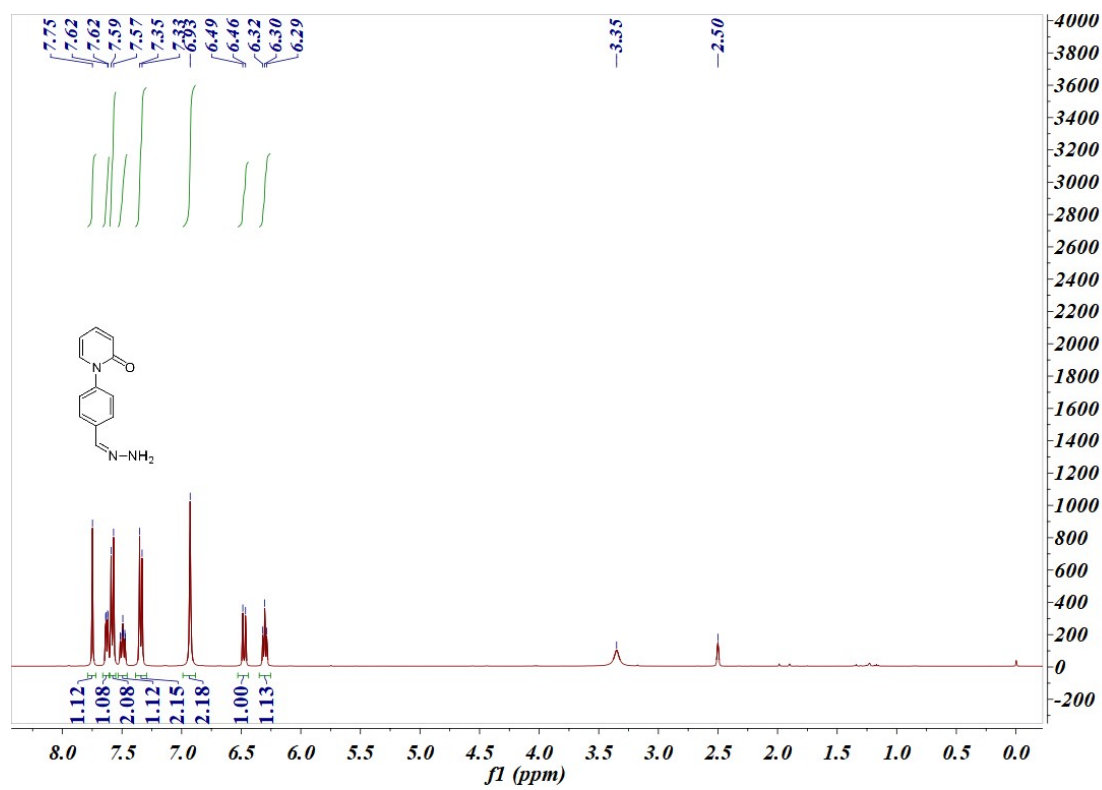


Figure S11.5d-¹³C NMR

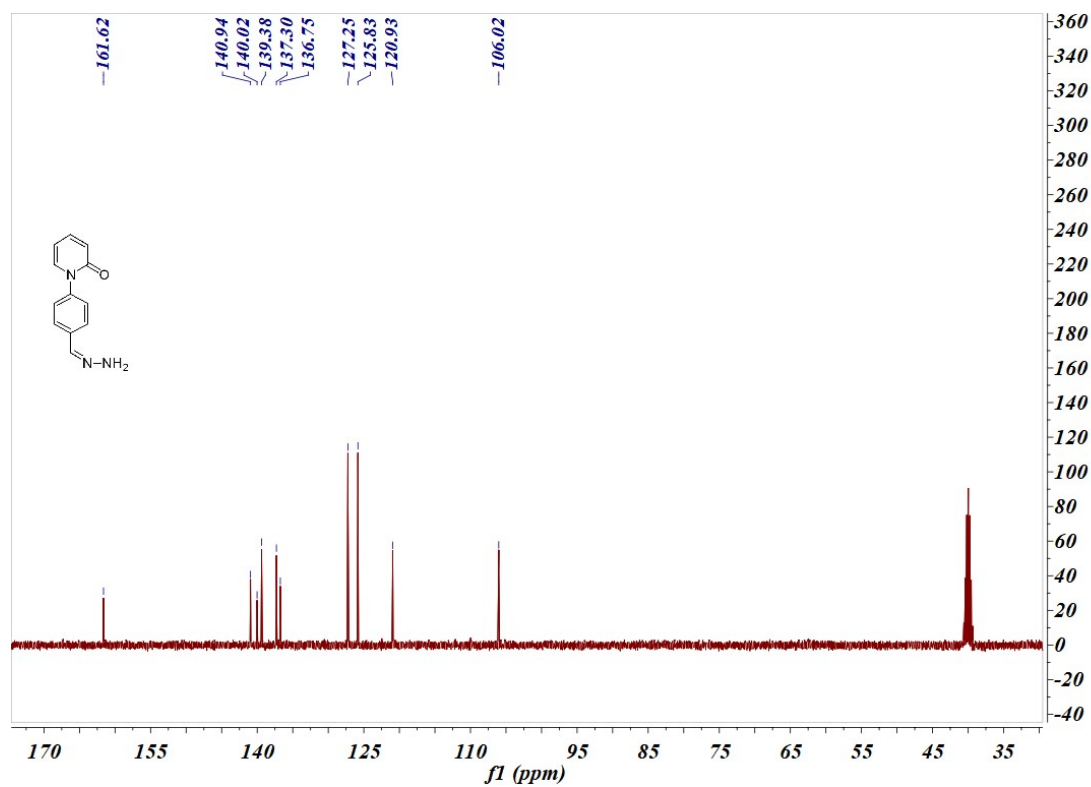


Figure S12.5e-¹H NMR

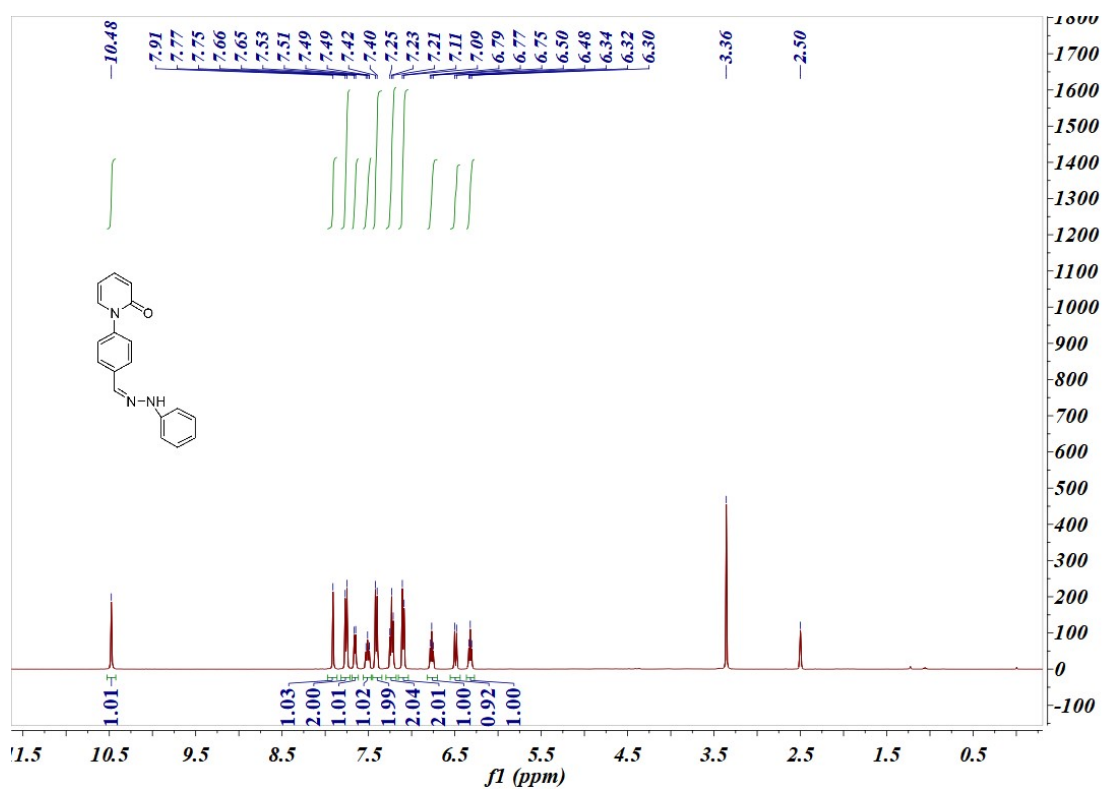


Figure S13.5e-¹³C NMR

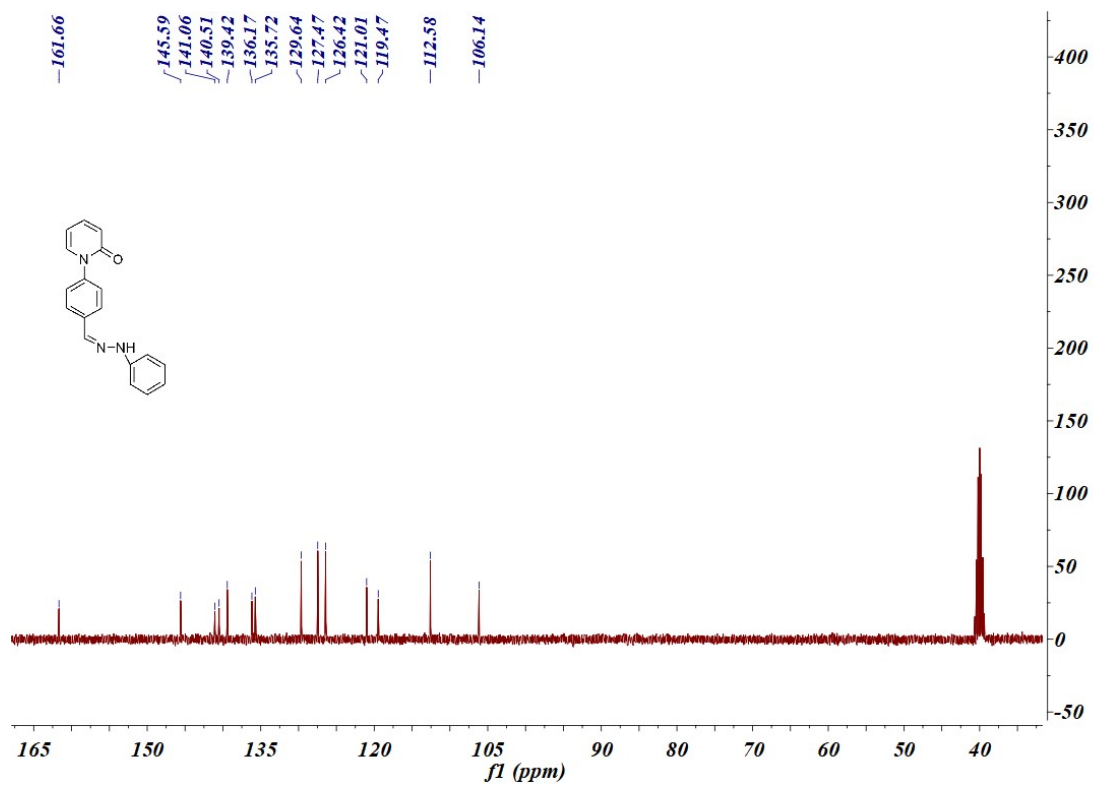


Figure S14.5f-¹H NMR

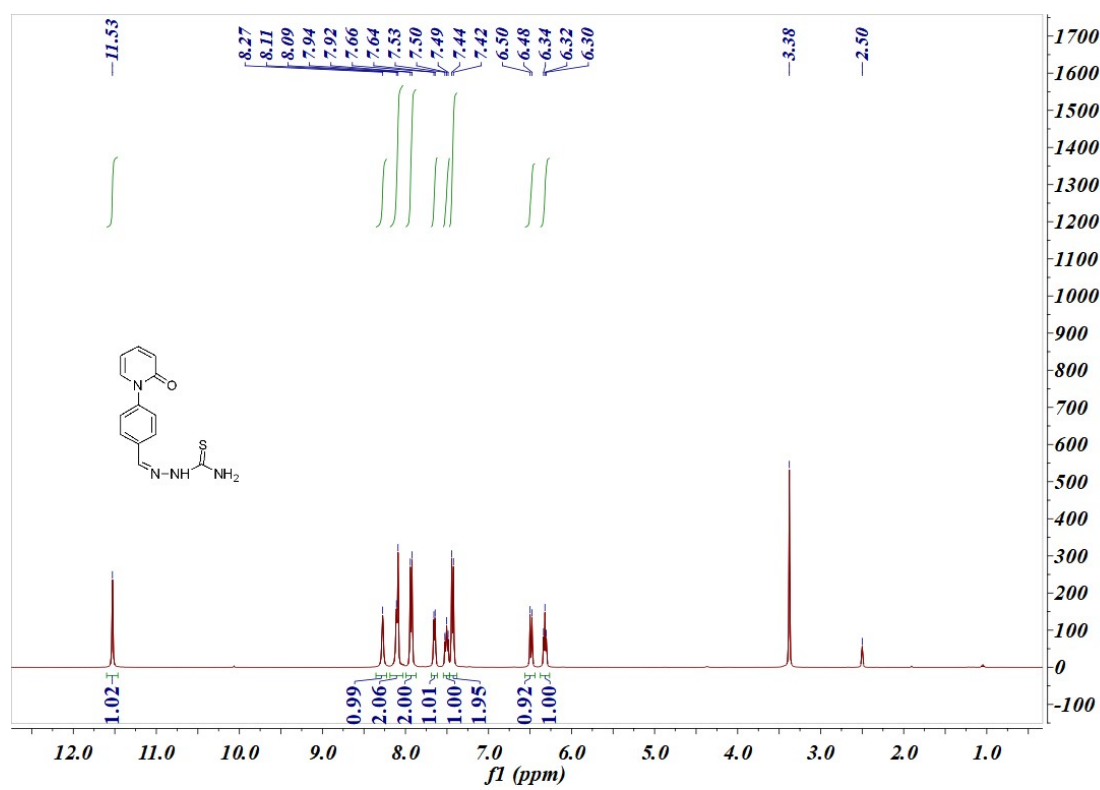


Figure S15.5f-¹³C NMR

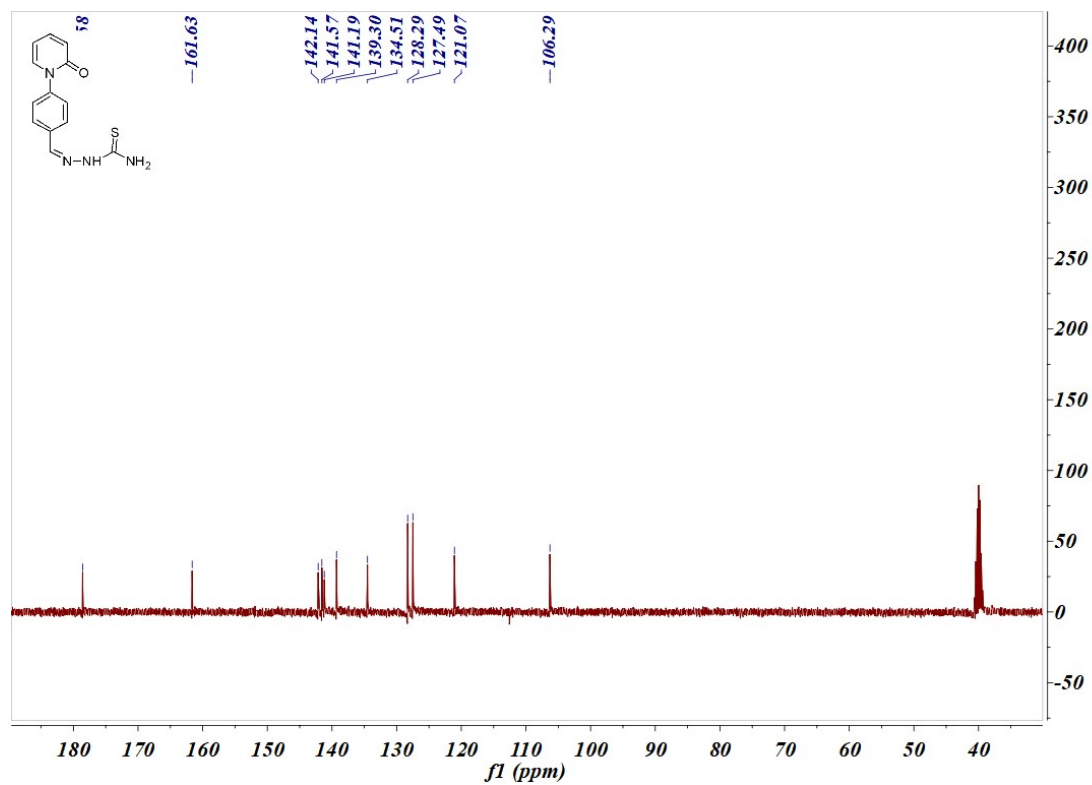


Figure S16.5g-¹H NMR

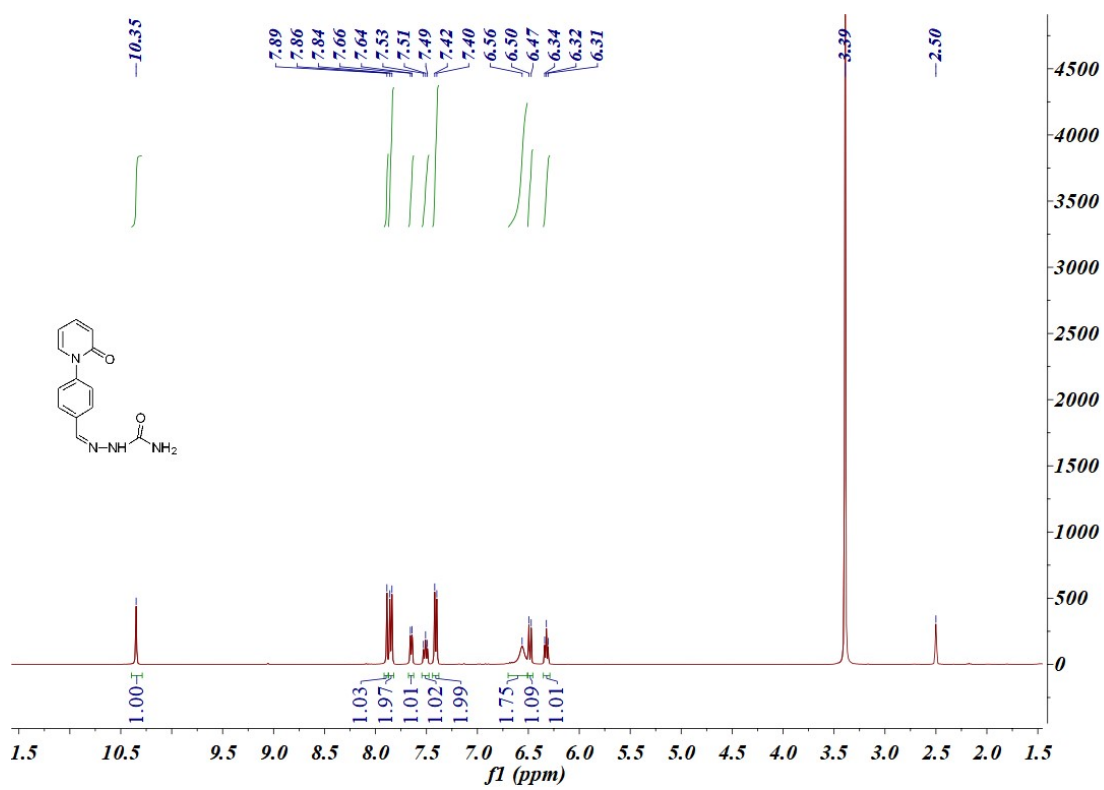


Figure S17.5g-¹³C NMR

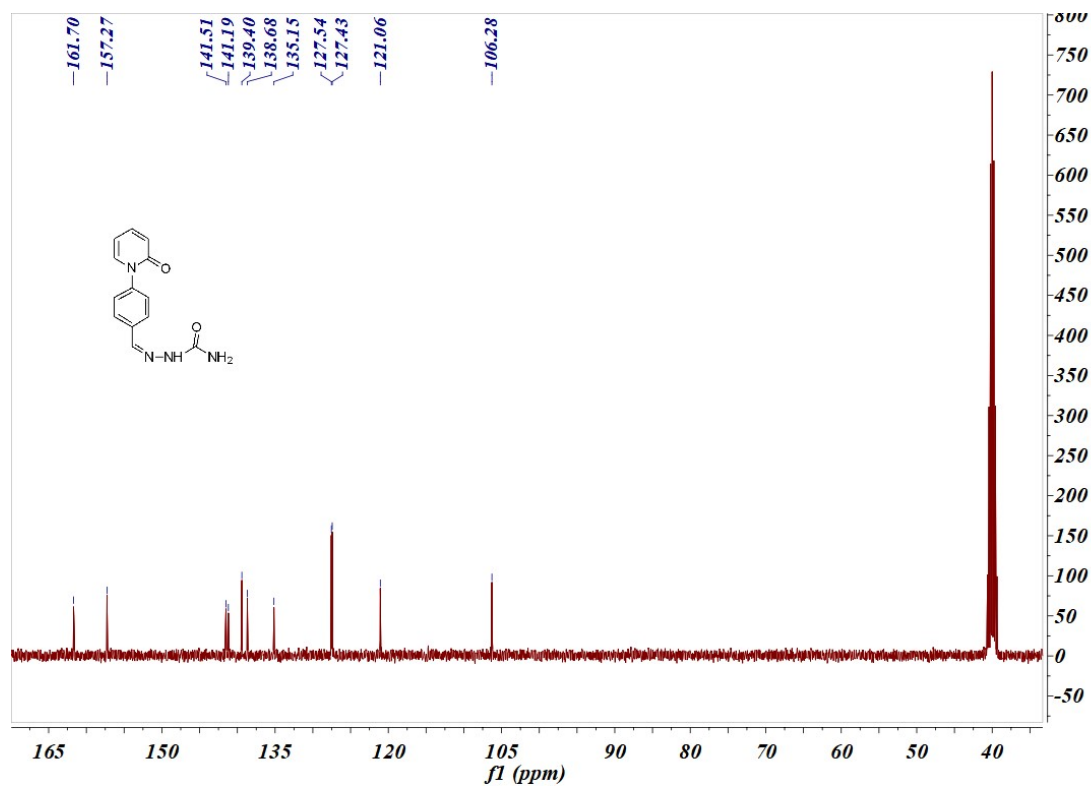


Figure S185a-HRMS

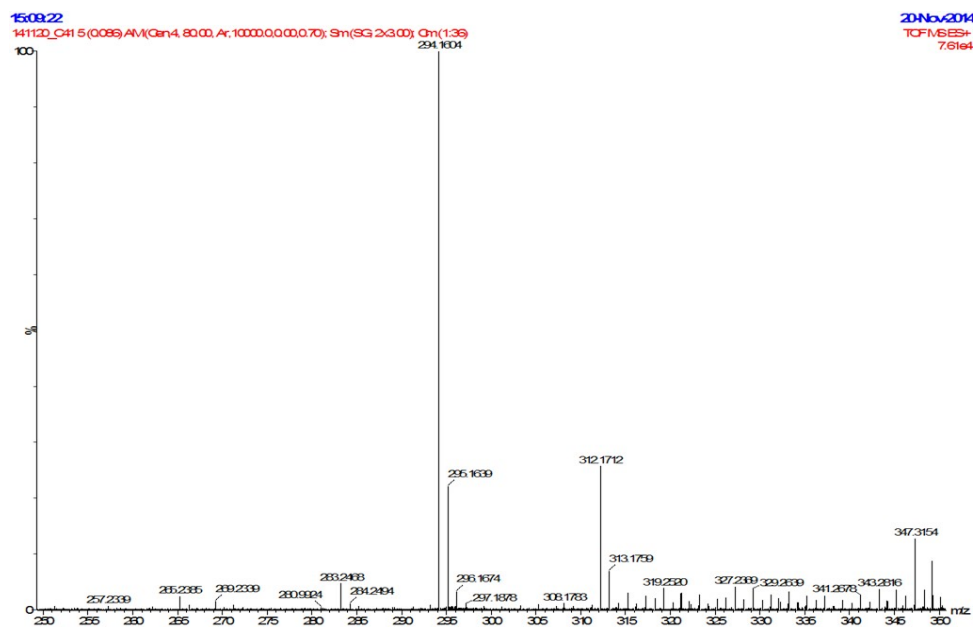


Figure S19.5b-HRMS

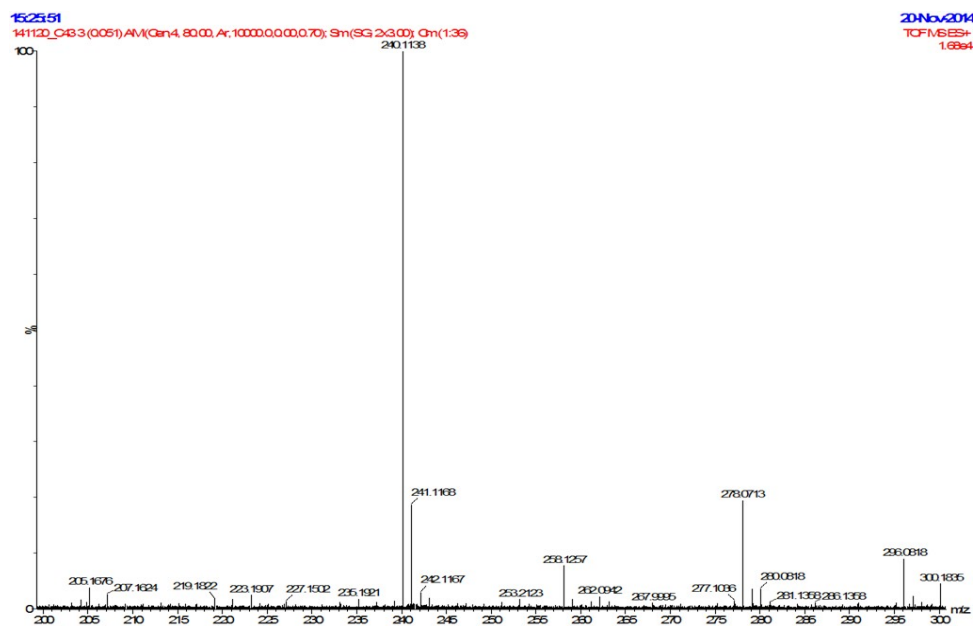


Figure S20.5c-HRMS

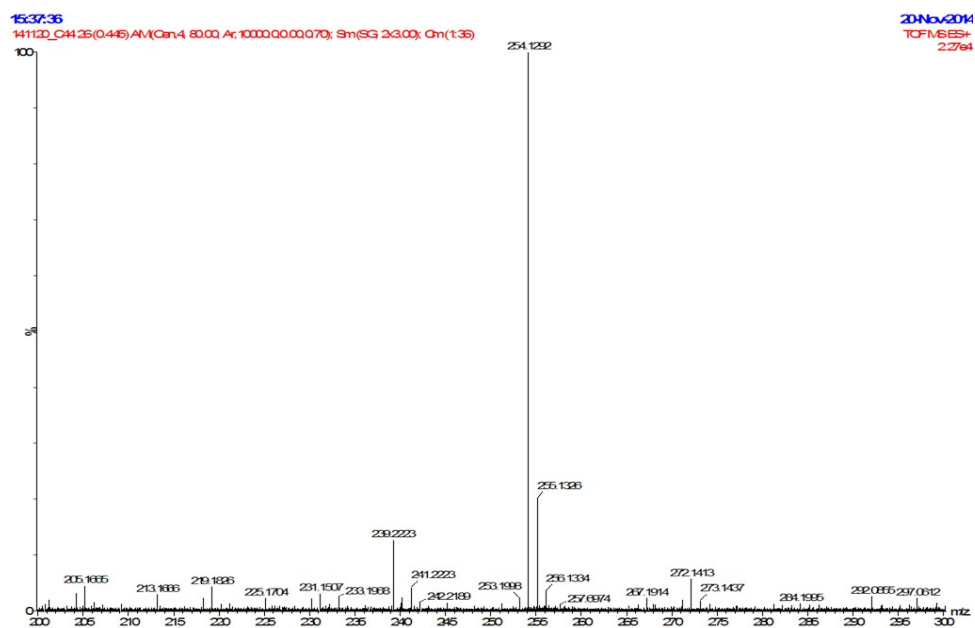


Figure S21.5d-HRMS

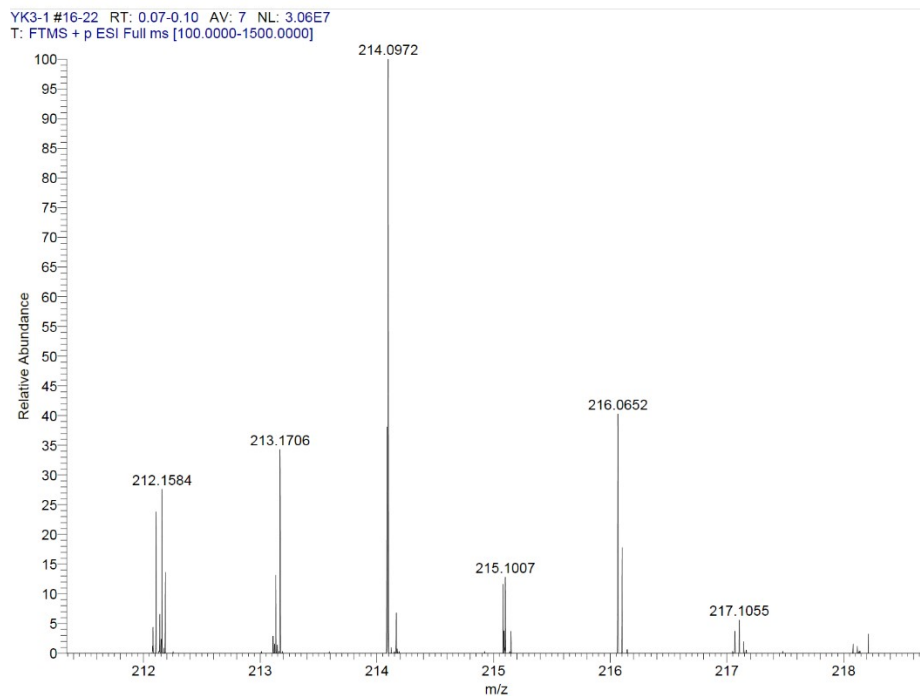


Figure S22.5e-HRMS

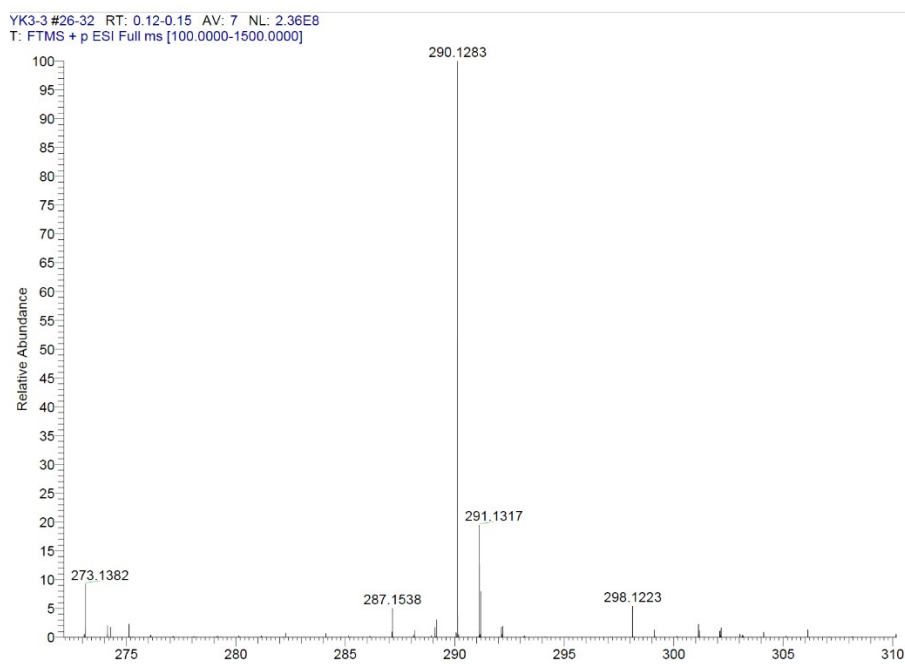


Figure S23.5f-HRMS

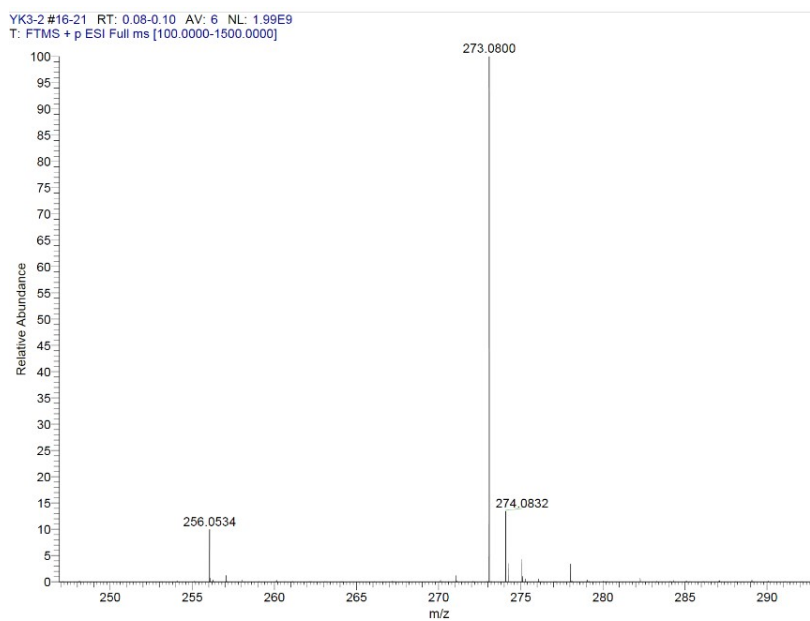


Figure S24.5g-HRMS

