

Electronic Supplementary Information (ESI)

Inhibition of transcription and antiproliferative effects in a cancer cell line using antigene oligonucleotides containing artificial nucleoside analogues

Lei Wang,^{a, c} Ryotaro Notomi,^a Shigeki Sasaki^{a, b} and Yosuke Taniguchi^{*a}

^a Graduate School of Pharmaceutical Sciences, Kyushu University, 3-1-1 Maidashi, Higashi-ku, Fukuoka 812-8582, Japan.

^b Graduate School of Pharmaceutical Sciences, Nagasaki International University, 2825-7 Huis Ten Bosch Machi, Sasebo City, Nagasaki 859-3298, Japan.

^c School of Pharmacy and Jiangsu Province Key Laboratory for Inflammation and Molecular Drug Target, Nantong University, Nantong 226001, PR China.

* To whom correspondence should be addressed. Tel: +81 92 642 6569; Fax: +81 92 642 6876; Email: taniguch@phar.kyushu-u.ac.jp

Contents:

Table S1. Oligonucleotides sequences used in this study	pS2
Table S2. MALDI-TOF MS results of synthesized antigene TFOs	pS3
Figure S1. HPLC charts of synthesized antigene TFOs	pS3
Figure S2. TTS off-target frequency analysis from a database with mismatches set at the CG inversion site	pS4
Figure S3. The evaluation of competitive triplex-forming ability of TFOs against TUG1-TTSs and similar sequences	pS5
Figure S4. The evaluation of competitive triplex-forming ability of TFOs	pS6
Table S3. Primer sequences for RT-qPCR.	pS7
Figure S5. Melting curve measurement, melting temperature (T_m) determination of duplex DNA	pS8
Table S4. Appendix data of values used in Figure 7	pS9

Table S1. Oligonucleotides sequences used in this study

Name	Sequence
TUG1-T	5' -AATGGGGAGAAGGAGAAGG-PA-3'
TUG1-3Me (Z = ³ MeAP-ΨdC)	5' -AAZGGGGAGAAGGAGAAGG-PA-3'
TUG1-TTS	5' -FAM-ACATT G CCCCTCTTCCTCTTCCAA-3' 3' -TGTAAC C GGGGAGAAGGAGAAGGTT-5'
VEGFA_1-T (Z =T)	5' -AAAGGAGAAZGGAGGAGAGG-PA-3'
VEGFA_1-3Me (Z = ³ MeAP-ΨdC)	5' -AAAGGAGAAZGGAGGAGAGG-PA-3'
VEGFA_1-TTS	5' -FAM-GCTTTCTCTT G CCTCCTCTCCAA-3' 3' -CGAAAGGAGAA C GGAGGAGAGGTT-5'
VEGFA_2-T	5' -GGGGTGGGGTTGGGTGGGG-PA-3'
VEGFA_2-3Me (Z = ³ MeAP-ΨdC)	5' -GGGGZGGGGZGGGGZGGGG-PA-3'
VEGFA_2-TTS	5' -FAM-GGGACCC C CCCC G CCCC G CCCCGGGG-3' 3' -CCCTGGGG C GGGG C GGG C GGGGCCCC-5'
HMGA1-T	5' -AGGATAGGTGGGAGAGAGAG-PA-3'
HMGA1-3Me (Z = ³ MeAP-ΨdC)	5' -AGGAZAGGZGGGAGAGAGAG-PA-3'
HMGA1-TTS	5' -FAM-GGTCCT G TCC G CCCTCTCTCTCGG-3' 3' -CCAGGAC A GG C GGGAGAGAGAGCC-5'
c-MET-T	5' -AAGGAGGGTGGAGATGGGGTG-PA-3'
c-MET-3Me (Z = ³ MeAP-ΨdC)	5' -AAGGAGGGZGGAGAZGGGGZG-PA-3'
c-MET-TTS	5' -FAM-TTCCTCC C GCTCT G CCCC G CCCCAC-3' 3' -AAGGAGGG C GGAG A CGGG C GGGTG-5'
TUG1-TTS(A)	5' -FAM-ACATT T CCCCTCTTCCTCTTCCAA-3' 3' -TGTA A AGGGGAGAAGGAGAAGGTT-5'
TUG1-TTS(G)	5' -FAM-ACATT C CCCCTCTTCCTCTTCCAA-3' 3' -TGTA A GGGGAGAAGGAGAAGGTT-5'
VEGFA_1-TTS(G)	5' -FAM-GCTTTCTCTT C CCTCCTCTCCAA-3' 3' -CGAAAGGAGAA G GGAGGAGAGGTT-5'
TUG1-ASO	5' -TGAATTTCAATCATTTGAGAT-3'
TUG1-ASO-PS	5' -T*G*A*A*T*T*T*C*A*A*T*C*A*T*T*T*G*A*G*A*T-3'
Rev-TUG1-T	5' -GGAAGAGGAAGAGGGGTAA-3'
Rev-TUG1-ASO-PS	5' -T*A*G*A*G*T*T*T*A*C*T*A*A*C*T*T*T*A*A*G*T-3'
ODN(A)	5' -CCTTCTCCTTCTCCCCATT-3'
Bst-ODN1	5' -CCTTCTCCTTCTCCCCUTT-3'
Bst-ODN2	5' -CCTUCTCCTUCTCCCCUTT-3'
Bst-ODN3	5' -CCTUCUCCTUCCCCCUTT-3'

PA: aminopropyl group, *: phosphorothioate linkage.

Table S2. MALDI-TOF MS results of synthesized antigene TFOs

TFO	Calculated [M-H] ⁻	Found (m/z)
TUG1-3Me	6278.163	6280.429
VEGFA-1-3Me	6591.221	6591.355
VEGFA-2-3Me	6975.363	6974.055
HMGA1-3Me	6703.273	6705.446
c-MET-3Me	7144.378	7143.261

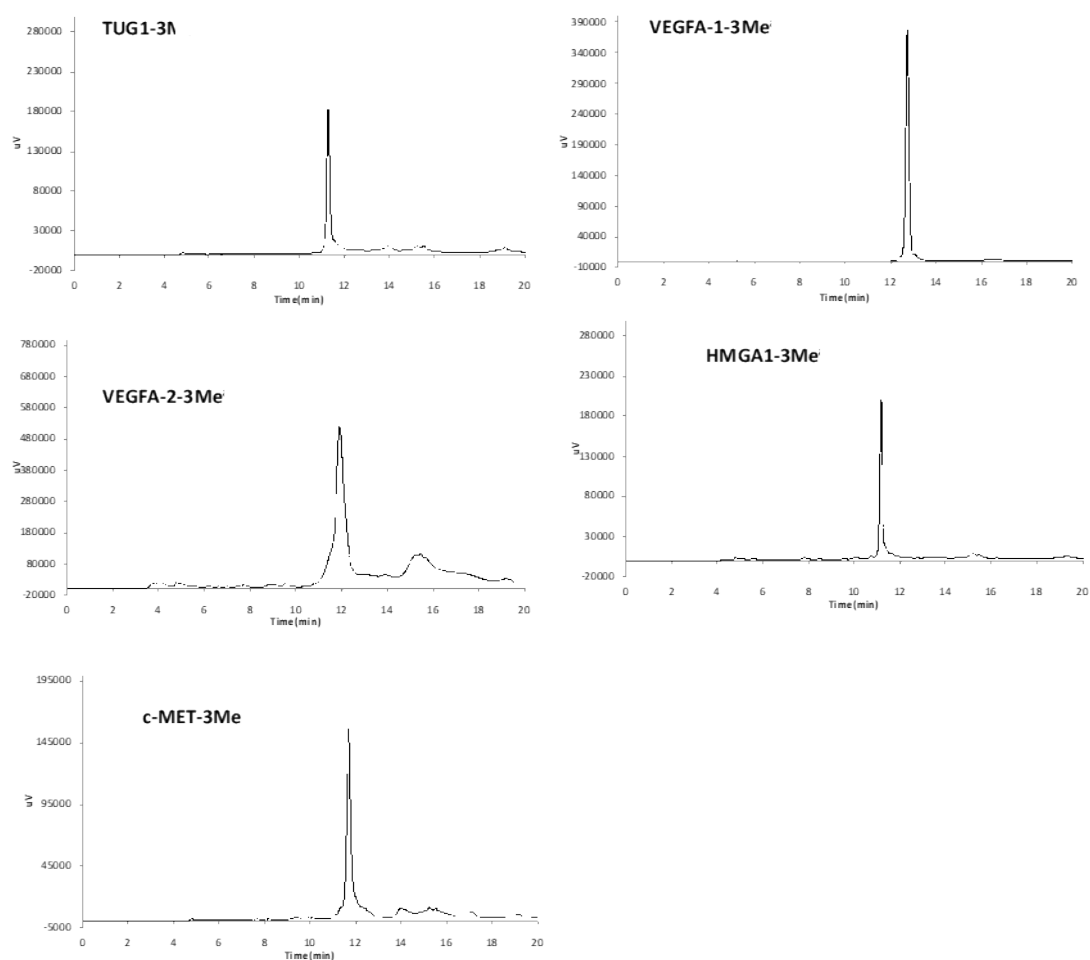
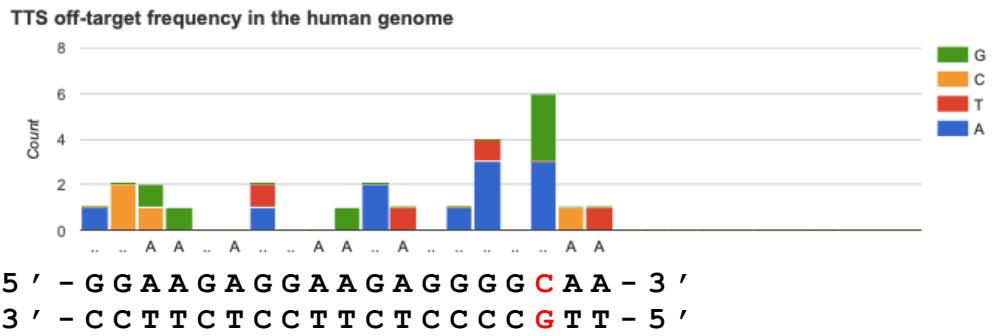


Figure S1. HPLC charts of synthesized antigene TFOs: SHISEIDO, CAPCELL PACK, C₁₈, 4.6ID x 250 mm, MG, 5 μm, Solution: A) 0.1M TEAA buffer (pH 7.0), B) CH₃CN. Program: B% 8-20%/20 min, 20-100%/22 min, 100%/27 min, 100-8%/28 min, Flow rate: 1 mL/min, UV: 254 nm, Column oven: 55 °C.

(A) TUG1-TTS



(B) VEGFA1-TTS

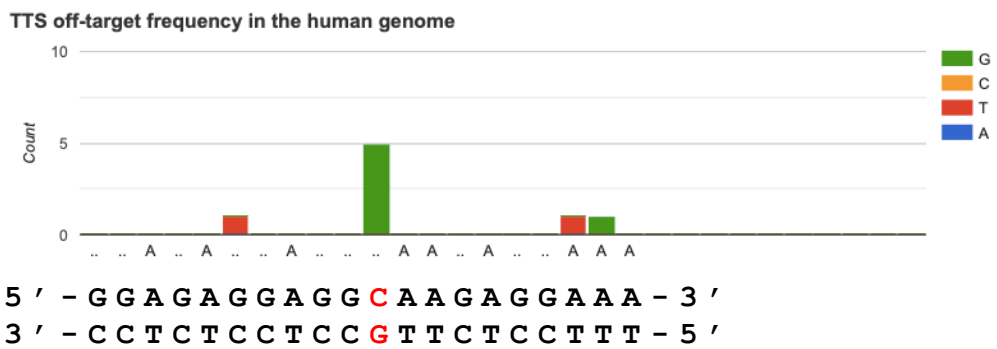


Figure S2. TTS off-target frequency analysis from a database with mismatches set at the CG inversion site against (A) TUG1 gene and (B) VEGFA gene.

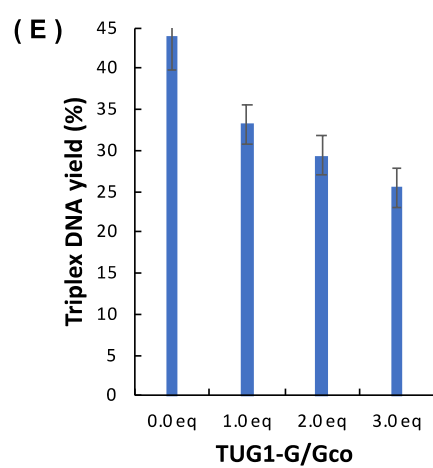
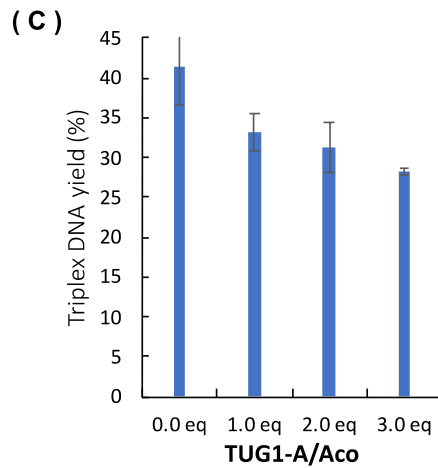
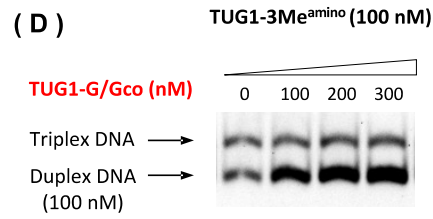
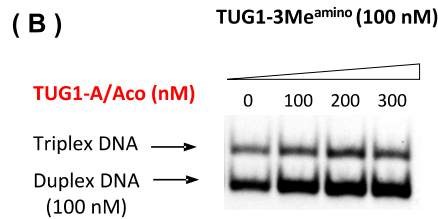
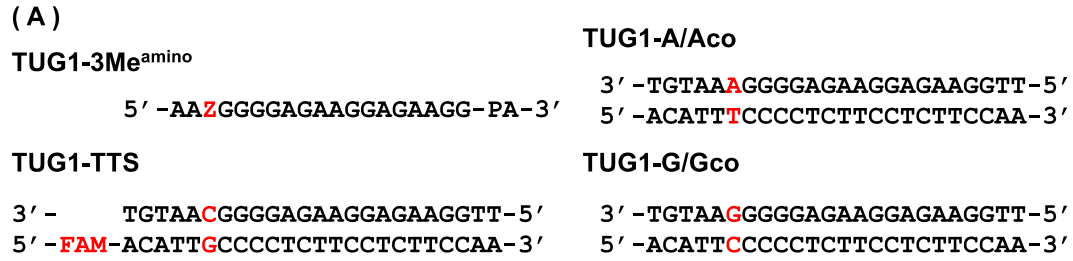
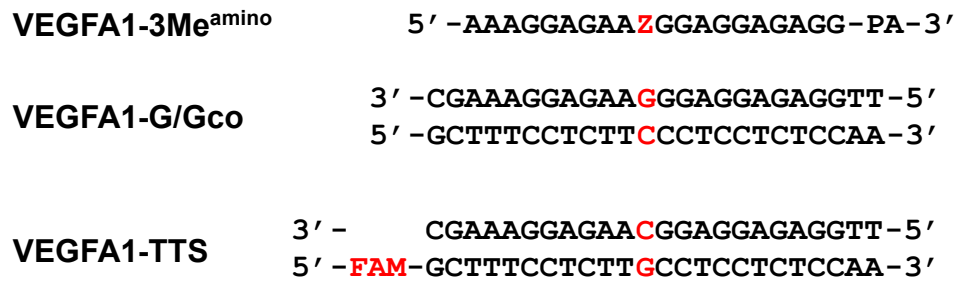
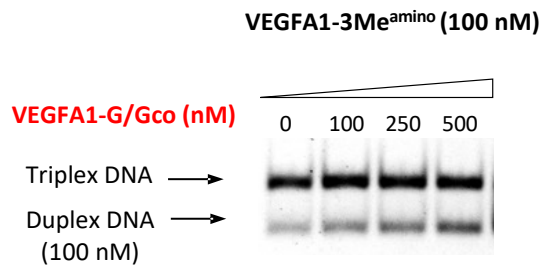


Figure S3. The evaluation of competitive triplex-forming ability of TFOs against TUG1-TTSs and similar sequences. (A) sequences for gel-shift assay. (B) FAM-labeled TUG1 TTS (100 nM) and TUG-3Me^{amino} (100 nM) was incubated with increasing concentrations of TTS similar sequence TUG1-A/Aco (100, 200, and 300 nM) in the buffer containing 20 mM Tris-HCl, 5 mM MgCl₂ and 2.5 mM spermidine at pH 7.5 and 37 °C. Electrophoresis was performed with a 10% non-denaturing polyacrylamide gel at 4 °C. (C) triplex DNA formation yield for TUG-3Me^{amino} with the presence TUG-A/Aco. (D) FAM-labeled TUG1 TTS (100 nM) and TUG-3Me^{amino} (100 nM) was incubated with increasing concentrations of TTS similar sequence TUG1-G/Gco (100, 200, and 300 nM) in the buffer containing 20 mM Tris-HCl, 5 mM MgCl₂ and 2.5 mM spermidine at pH 7.5 and 37 °C. Electrophoresis was performed with a 10% non-denaturing polyacrylamide gel at 4 °C. (E) triplex DNA formation yield for TUG-3Me^{amino} with the presence TUG-G/Gco.

(A)



(B)



(C)

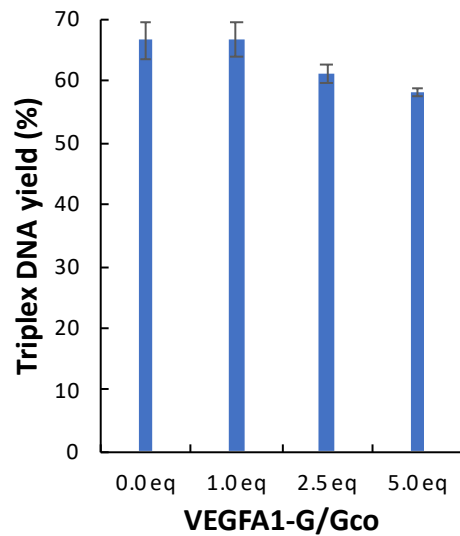


Figure S4. The evaluation of competitive triplex-forming ability of TFOs against VEGFA1-TTSs and similar sequences. (A) sequences for gel-shift assay. (B) FAM-labeled VEGFA1 TTS (100 nM) and VEGFA1-3Me^{amino} (100 nM) was incubated with increasing concentrations of TTS similar sequence VEGFA1-G/Gco (100, 250, and 500 nM) in the buffer containing 20 mM Tris-HCl, 5 mM MgCl₂ and 2.5 mM spermidine at pH 7.5 and 37 °C. Electrophoresis was performed with a 10% non-denaturing polyacrylamide gel at 4 °C. (C) triplex DNA formation yield for VEGFA1-3Me^{amino} with the presence VEGFA1-G/Gco.

Table S3. Primer sequences for RT-qPCR.

Gene	Forward primer 5' to 3'	Reverse primer 5' to 3'
TUG1 ¹	TAGCAGTTCCCAATCCTTG	CACAAATCCCATCATTCCC
HMGA1 ²	AACCAGCACAAAGTCCAGGAGGG	AAAGCTGTCCAGTCCCAGAAGG
c-MET ³	CAGGCAGTGCAGCATGTAGT	GATGATTCCCTCGGTCAGAA
VEGFA ⁴	CTTGCCTTGCTGCTCTACC	CACACAGGATGGCTTGAAG
GAPDH ⁴	GGAGTCCCTGCCCACTCA	GCCCCTCCCCTCTTCAAG

References:

1. Cell Death and Disease (2016) 7, e2109; Oncology Lett. 16: 5317-5324, 2018.
2. Mol. BioSyst., 2011, 7, 1336-1346; and other published paper in this lab.
3. Cancer Res. 2015 Oct 1; 75(19): 4131–4142.; J. Biol. Chem. (2020) 295(2) 481–503
4. J Biol Chem. 2015 Sep 4; 290(36): 22212–22224.

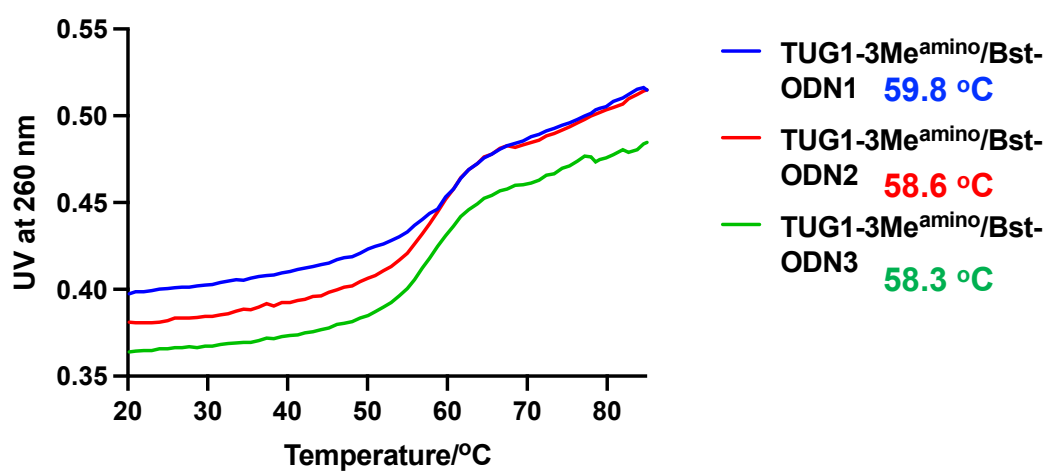


Figure S5. Melting curve measurement, melting temperature (T_m) determination of duplex DNA between TUG1-3Me^{amino} and Bst-ODNs. 1 μ M of each TUG1-3Me^{amino} and Bst-ODN was heated to 90 °C for 5 min and annealed by slow cooling in PBS buffer. UV melting behavior was monitored at 260 nm between 20 and 90 °C at a rate of 1.0 °C/min using a DU 800 spectrometer (Beckman Coulter), and melting data were analyzed by the program MeltWin (v3.5).

Tables S4. Appendix data of values used in Figure 7

Gene name	log2(fold_change)	Gene name	log2(fold_change)	Gene name	log2(fold_change)	Gene name	log2(fold_change)
SAMD11	-2.17891	FRMD8	0.290669	ZFP106	-1.09268	HNRNPUL1	-0.494304
ISG15	2.34141	NEAT1	-1.74498	TP53BP1	-0.690588	CCDC97	0.495304
AGRN	-0.667953	SCYL1	0.722492	MFAP1	0.0534564	BCKDHA	0.324618
B3GALT6	0.488461	FAM89B,SSSCA1	0.926458	FBN1	-1.91007	RPS19	1.24076
PUSL1	0.536013	EHBP1L1	-0.391536	COPS2	-0.572921	ARHGEF1	0.2482
GLTPD1	0.850647	PCNXL3	-0.299441	GABPB1	0.103573	CIC,LOC100652741	-0.516014
ATAD3B	0.690431	KAT5	0.260968	SPPL2A	-0.535659	PVR	0.397776
ATAD3A	0.554627	MUS81	0.429938	LEO1	-0.213833	BCL3	0.460715
MIB2	0.945896	CCDC85B	0.479268	GNB5	0.190829	PVRL2	0.427772
SKI	-1.02929	DRAP1	1.07625	ARPP19	-1.1974	TOMM40	0.718792
RER1	0.671085	SART1	0.51222	RSL24D1	0.395893	CLPTM1	0.269599
TPRG1L	0.809162	BANF1	0.608031	CCPG1,DYX1C1, DYX1C1-CCPG1	-0.338967	CLASRP	0.54158
CAMTA1	0.0537567	SF3B2	0.747124	ADAM10	-1.18738	GEMIN7,PPP1R37	0.635403
VAMP3	-0.0438829	PACS1	-0.606816	SLTM	-0.27672	VASP	0.40951
PARK7	0.492383	KLC2	0.687692	MYO1E	-0.308971	QPCTL	-0.0470123
SPSB1	0.613859	RAB1B	0.168637	GTF2A2	0.0361567	PPP5C	0.0208619
SLC25A33	0.338236	DPP3	0.266139	BNIP2	-0.585448	CALM3	-0.373726
TMEM201	0.165889	C11orf80,RCE1	0.914324	ANXA2	0.201016	ARHGAP35	-1.04256
UBE4B	-1.27019	LRFN4	0.42895	RPS27L	0.343009	SAE1	-0.0970511
KIF1B	-1.24974	SYT12	-0.151185	CA12	-0.0771965	CCDC9	1.02597
PGD	0.40779	RHOD	0.605804	FAM96A	0.335699	DHX34	0.581452
APITD1,APITD1- CORT,CORT	0.435464	KDM2A	-0.0821031	PPIB	1.06957	EHD2	-0.691486
PEX14	0.410253	ADRBK1	-0.062104	KIAA0101	0.148431	GLTSCR2	0.608793
TARDBP	-0.824323	RPS6KB2	0.333476	OAZ2	0.23015	SEPW1	0.273291
UBIAD1	0.163735	AIP	0.709983	SPG21	-0.15649	EMP3	1.23199
AGTRAP	0.913894	GSTP1	0.677901	CLPX	-0.215667	GRWD1	0.150429
PLOD1	- 0.00531896	NDUFV1	0.458634	VWA9	0.20053	CYTH2	0.55904
MFN2	-0.247902	ALDH3B1	-0.537	TIPIN	0.0649469	PPP1R15A	3.85027
MIIP	0.938642	NDUFS8	0.700104	RPL4	0.515493	NUCB1	0.580399
EFHD2	0.192774	TCIRG1	0.126771	AAGAB	-0.0177778	BAX	0.626342
PLEKHM2	0.492418	LRP5	-0.379668	CLN6	0.584969	FTL	1.1084

FBLIM1	0.306919	PPP6R3	-0.958709	ITGA11	-1.98649	RUVBL2	0.490921
SZRD1	0.076446	GAL	0.879928	ANP32A	-0.422381	SNRNP70	0.417734
NECAP2	0.33508	CCND1	0.80073	TLE3	-0.0212328	RPL13A	0.723996
MRT04	0.614368	FADD	0.51466	LARP6	1.6015	RPS11	0.915708
C1orf151- NBL1,MINOS1,NBL1	0.690469	PPFIA1	-0.373624	PKM	0.534771	RCN3	1.03392
CDA,PINK1	0.454507	CTTN	0.149491	HEXA	0.640133	PRR12,SCAF1	0.258139
ALPL	-0.378004	RNF121	0.213062	ADPGK	0.402087	BCL2L12	0.748702
CDC42	-0.38806	INPPL1	0.706187	NPTN	-0.624365	PRMT1	0.3214
EPHB2	0.687426	ARHGEF17	-0.997119	UBL7	0.504574	AP2A1	-0.0330919
KDM1A	-0.247355	MRPL48	0.430086	EDC3	0.337874	MED25	0.214329
RPL11	0.845918	PAAF1	0.340904	ULK3	0.388142	PTOV1	0.21426
TCEB3	0.203508	PPME1	-0.298189	SCAMP2	0.662434	TBC1D17	0.507661
PITHD1	0.456148	POLD3	-0.567102	COX5A	0.75049	ATF5,MIR4751	1.08818
LYPLA2	0.489684	SPCS2	0.57226	RPP25	1.53207	NR1H2	0.689759
PNRC2	-0.95543	RPS3	0.639341	SIN3A	-0.854675	POLD1	-0.0311601
SRRM1	-0.595747	SERPINH1	0.156805	PTPN9	0.346523	EMC10	0.40985
CLIC4	-1.53453	TSKU	0.142812	SNUPN	0.113555	PPP2R1A	0.155419
TMEM50A	0.0124566	AAMDC	0.763228	IMP3	0.86598	MYADM	-0.106121
SEPN1	-0.789404	LOC100506233	-0.690414	CSPG4	0.626183	NDUFA3	0.838959
FAM54B	-0.0321723	TMEM126B	-0.405905	FBXO22-AS1	0.107403	PRPF31	0.318886
ZNF593	1.48469	TMEM126A	-0.0550337	ETFA	0.270636	CNOT3	0.321977
CEP85	-0.326547	EED	0.191108	TSPAN3	0.145806	TSEN34	0.408357
SH3BGRL3	1.21651	C11orf73	0.318746	WDR61	0.173581	RPS9	1.09323
DHDDS	0.580662	PRSS23	0.132277	MTHFS,ST20,ST2 0-MTHFS	0.650033	LENG8	-0.501334
HMG2	-0.0955101	MED17	-0.321931	MESDC2	0.32503	RPL28	1.00896
RPS6KA1	0.0177941	CEP57	-0.391214	C15orf40	0.0982249	NAT14,ZNF628	0.0371915
ARID1A	-1.00404	YAP1	-1.25122	BTBD1	-0.719713	ZNF580	-0.0774554
SFN	1.21455	AASDHPPT	-0.974657	WDR73	0.606007	ZNF581	1.30233
NUDC	0.740447	ACAT1	-0.365849	NMB	0.643066	U2AF2	-0.138915
TMEM222	0.882926	DDX10	1.04024	SEC11A	0.363274	EPN1	0.446491
PPP1R8	0.125336	DLAT	-0.85028	MRPL46	0.56499	ZNF444	0.913274
ATPIF1	0.277898	SDHD	-0.523685	POLG	-0.0139286	TRAPPC2P1,ZNF54 7	1.29481
PHACTR4	-1.08874	PTS	0.676861	ANPEP	0.263185	ZNF749	0.889037
RCC1,SNHG3	0.0250329	NNMT	0.00442146	CIB1	0.396602	RPS5	0.957529

RNU105A	-0.238036	REXO2	0.0198448	PRC1	-0.830924	TRIM28	0.342318
TRNAU1AP	0.254652	PAFAH1B2	-0.772803	CHSY1	-0.917206	MGC2752	0.0200122
YTHDF2	-0.0778956	TAGLN	0.102819	VIMP	1.77177	PPAP2C	0.724769
ZCCHC17	0.564027	ATP5L	0.568063	SNRPA1	0.748861	POLRMT	0.357904
SERINC2	0.486821	ARCN1	-0.374093	TM2D3	-0.128175	RNF126	0.603422
TINAGL1	0.563108	PHLDB1	-0.751902	SNRNP25	0.463456	MED16	0.0140408
KHDRBS1	-0.633018	MIR3656,TRAPPC4	0.735029	MPG	0.740397	R3HDM4	0.342251
TMEM39B	0.177232	HMBS	0.364225	ITFG3	-0.273043	C19orf6	0.700139
KPNA6	-0.38713	RNF26	-0.0622576	NME4	0.127348	POLR2E	0.269111
TXLNA	0.138362	SC5DL	-1.49078	DECR2	-0.0615994	SBNO2	0.0762498
EIF3I	0.59922	GRAMD1B,LOC100128242	-0.0128056	MIR3176,SOLH	0.367875	GAMT	0.329577
HDAC1	0.0339695	EI24	-0.436072	PIGQ	-0.241052	MEX3D	0.0223783
RBBP4	-0.599058	STT3A	0.213442	RAB40C	0.178437	MBD3,UQCR11	0.569273
KIAA1522	-0.39353	CHEK1	-0.427584	FAM195A	1.1421	TCF3	-0.233902
ZMYM4	-1.04641	FOXRED1	0.508564	WDR90	0.15745	KLF16	0.501267
NCDN	-0.164305	DCPS	0.0969863	RHOT2	0.315282	FAM108A1	0.637735
ADPRHL2	0.716028	ST3GAL4	0.35418	STUB1	0.592007	BTBD2	-0.149441
MAP7D1	0.570359	APLP2	-0.261082	FAM173A	0.259989	MKNK2	0.72636
THRAP3	-0.424979	BET1L	0.165778	HAGHL	-0.0512467	AP3D1	-0.216904
CDCA8	-0.415591	IFITM3	0.354742	MSLN	-0.0802751	PLEKHJ1	0.409169
MANEAL	0.219287	RNH1	0.617959	CHTF18	0.64918	LSM7	0.847032
C1orf122	1.55447	HRAS	0.805924	UBE2I	0.442141	TIMM13	0.856705
UTP11L	0.557447	DEAF1	0.414285	GNPTG	0.629488	LMNB2	-0.302545
AKIRIN1	-0.129151	SLC25A22	0.58806	TELO2	0.306495	SLC39A3	0.598093
NDUFSS	0.769594	POLR2L	0.977641	HN1L	-0.126247	SGTA	0.773023
KIAA0754,MACF1	-1.54405	CHID1	0.10741	NUBP2	0.442053	AES	0.268012
PPIE	0.571581	CTSD	0.841702	FAHD1	0.362867	DOHH	1.01423
CAP1	-0.115363	CDKN1C	0.489431	NDUFB10	0.663725	MFSD12	0.452918
ZMPSTE24	-0.862179	PHLDA2	2.11958	SNHG9	1.62807	C19orf71	0.388446
NFYC	0.260547	NAP1L4	-0.111099	TBL3	0.311319	C19orf71	-0.209001
CTPS1	0.0826831	CARS	1.44106	GFER	0.768395	C19orf71	0.229339
PPCS	-0.0108099	NUP98	-0.876492	SLC9A3R2	0	C19orf71	-0.637327
PPIH	0.762857	RHOG	0.99285	TSC2	0.190542	TBXA2R	-0.405652
YBX1	0.394737	PRKCDBP	1.43839	TRAF7	-0.645105	CACTIN	0.366228
CDC20	-0.103508	ARFIP2	0.407293	MLST8	0.252776	PIP5K1C	-0.638062

PTPRF	-0.766813	RRP8	0.320361	E4F1	0.285122	DAPK3	0.511304
KDM4A	-0.228756	TAF10	0.45496	CCNF	-0.748298	EEF2	0.213523
IPO13	0.360366	TPP1	-0.32989	C16orf59	0.223823	ZBTB7A	-0.0276431
DPH2	0.337804	MRPL17	0.556684	ATP6V0C	1.11408	MAP2K2	0.762552
ATP6V0B	1.32685	LMO1	-1.28089	AMDHD2	0.6074	SH3GL1	-0.0567817
B4GALT2	0.397609	ST5	-0.387978	PDPK1	-0.70314	UBXN6	0.331586
DMAP1	0.618242	TMEM9B	-0.19285	KCTD5	0.953776	C19orf10	1.33694
RNF220	0.0785159	DENND5A	-0.23779	SRRM2	-1.08772	DPP9	0.388247
KIF2C	-0.009787	TMEM41B	-0.155016	PRSS21	0.431088	TICAM1	1.16507
RPS8	0.587693	EIF4G2	-0.54893	FLYWCH2	-0.281296	PLIN3	0.0849689
UROD	0.844286	ZBED5	-0.79114	FLYWCH1	0.617134	PTPRS	-0.918745
HPDL	0.627098	DKK3	0.0192958	PAQR4	-0.545166	SAFB2	0.304838
TOE1	0.625657	LOC100506305	0.378287	TNFRSF12A	0.970617	C19orf70	0.579878
AKR1A1	0.371078	RRAS2	0.703722	THOC6	-0.156016	LONP1	0.769984
NASP	0.0408185	COPB1	-0.411988	IL32	1.98067	DUS3L	0.766343
TMEM69	-0.224464	PSMA1	0.368977	NAA60	0.337679	NDUFA11	1.02231
MAST2	-0.230298	RPS13	0.535657	GLIS2	-0.469473	RANBP3	0.132446
RAD54L	0.175021	SAAL1	0.171469	VASN	0.765193	MLLT1	-0.482512
UOQRH	0.586637	TSG101	0.542413	DNAJA3	0.300121	GTF2F1	0.224858
CMPK1	-0.811003	SVIP	-0.792225	HMOX2	0.855387	KHSRP,MIR3940	-0.223321
CDKN2C	-1.04753	CCDC34	-0.693613	MGRN1	-0.0843373	SLC25A23	-0.602785
RNF11	-0.941177	LGR4	-1.90921	NUDT16L1	0.164713	GPR108	0.469103
OSBPL9	-0.652789	LIN7C	-0.200654	UBN1	-0.267666	XAB2	0.466205
BTF3L4	-0.551398	BDNF	0.123569	ALG1	0.391038	CTXN1	-0.228962
PRPF38A	-0.0123329	KIF18A	-1.22875	PMM2	0.488136	TIMM44	0.927356
SCP2	-0.320605	MPPED2	-2.63252	C16orf72	-0.235353	ELAVL1	-0.386095
LRRC42	0.358646	IMMP1L	0.0492271	NUBP1	0.654743	CD320	0.70258
MRPL37	0.417062	CSTF3	-0.592888	LOC100505564	-0.0594144	NDUFA7	0.802103
HEATR8,HEATR8- TTC4,TTC4	0.619105	C11orf91,CD59	0.37004	BFAR	0.243377	EIF3G	0.953807
PCSK9	-0.669266	FBXO3	-0.538104	NOMO1	0.229323	DNMT1	-0.600956
USP1	-1.04793	APIP	0.121521	PDXDC1	-0.51667	FDX1L	1.14619
PGM1	0.0909925	COMMD9	0.0375535	C16orf45	0.641147	RAVER1	-0.253111
AK4	-0.471199	PEX16	0.848677	MIR484,NDE1	-0.157519	TYK2	-0.118035
LEPR,LEPROT	-0.434349	ARHGAP1	-0.164283	ABCC1	-0.573503	CDC37,MIR1181	0.616458
MIER1	-1.27157	CKAP5	-0.72714	PKD1P1	0.179125	KEAP1	0.307581

GADD45A	2.20972	ARFGAP2	0.298689	ITPRIPL2	-0.609123	KRI1	-0.0219052
SRSF11	-0.70746	PACSIN3	0.159216	METTL9	-0.0450075	AP1M2	0.337427
TYW3	-0.346543	ACP2	-0.0903769	UQCRC2	0.0833503	TMED1	0.625
ACADM	-0.346648	PSMC3	0.75011	UBFD1	-0.360369	YIPF2	0.492257
RABGGTB	0.694588	CELF1	-0.652107	DCTN5	0.0697422	SPC24	-0.367799
NEXN	-1.02389	KBTBD4	- 0.00148723	PLK1	-0.581779	KANK2	-0.625309
DNAJB4	-0.791522	MTCH2	0.0951483	RBBP6	-0.453022	TMEM205	1.20532
IFI44L	-1.32212	FNBP4	-0.108992	TNRC6A	-1.12048	ECSIT_ZNF653	0.276477
PRKACB	-1.00286	NUP160	-1.02517	LCMT1,LOC55420 6	0.804465	ELOF1	0.745974
CYR61	-0.140549	TNKS1BP1	0.311176	CCDC101	0.893321	WDR83OS	0.645113
SH3GLB1	-0.0890259	SSRP1	- 0.00160061	EIF3C	-0.110882	DHPS	0.349998
HS2ST1	-1.0777	SLC43A3	0.830371	ATXN2L	0.365149	TNPO2	0.0145816
LMO4	-1.58784	TIMM10	0.758837	SH2B1	0.511225	C19orf43	1.0306
PKN2	-1.88115	MED19	0.839049	NFATC2IP	-0.0896071	PRDX2	0.539098
LRRC8D	-0.398317	OSBP	0.28401	SPNS1	0.848135	DNASE2	0.348263
ZNF326	-0.480775	PATL1	-0.365952	QPRT	0.638888	FARSA	0.704561
CDC7	-0.711874	MRPL16	0.49714	KIF22	0.0577067	GADD45GIP1	1.01168
RPL5	0.384381	PRPF19	0.412135	MAZ	-0.590056	TRMT1	1.05339
DR1	0.219504	DDB1	-0.309834	MVP,PAGR1	0.0938559	STX10	0.38469
FNBP1L	-1.43339	CYBASC3	-0.0165527	ASPHD1	0.884778	SAMD1	-0.180422
ABCD3	-1.01381	CPSF7	0.0644756	TMEM219	0.616185	PRKACA	-0.181147
RWDD3, TMEM56, T MEM56-RWDD3	-1.2998	C11orf10, MIR611	0.887227	TAOK2	0.141517	ASF1B	0.0333059
SNX7	-0.809217	FADS1, MIR1908	-0.538926	INO80E	0.726127	DDX39A	0.688489
HIAT1	-0.629369	FADS3	1.07718	ALDOA	0.714544	GIPC1	0.295033
PRMT6	-0.740074	FTH1	1.34507	PPP4C	0.684771	DNAJB1	0.609163
FAM102B	-2.15893	AHNAK	0	PRR14	0.0111405	NDUF87	0.860854
PRPF38B	-0.128693	EEF1G	0.52891	FBRS	0.638284	ILVBL	0.300623
STXBP3	-0.63382	TUT1	0.573645	LOC100862671, S RCAP	0	NOTCH3	-1.49924
GPSM2	-1.04248	EML3, MTA2	0.134372	RNF40	0.350302	BRD4	-0.432613
SARS	1.12884	B3GAT3	0.600593	FBXL19	0.174415	AKAP8	0.411658
GNAI3	-0.488806	GANAB	-0.103256	SETD1A	-0.0433084	AKAP8L, WIZ	0.344916
AMPD2	0.115758	INTS5	0.172866	STX4	1.0185	EPS15L1	0.272923

GSTM4	-0.371002	C11orf48	0.889084	BCKDK,KAT8,LO C100996366	0.240995	CHERP	0.135645
CSF1	0.359719	UBXN1	1.11609	FUS,LOC1006527 40	0.185741	SLC35E1	-0.160066
AHCYL1	-0.733677	BSCL2,HNRNPUL2,HNR NPUL2-BSCL2	- 0.00424538	TGFB111	-0.0407409	SMIM7	0.609257
STRIP1	0.767602	TMEM223	0.320229	ORC6	0.579954	HAUS8	0.480603
CEPT1	-0.78582	NXF1	0.630146	PHKB	-0.810503	NR2F6	0.0982097
ATP5F1	-0.0240978	STX5	1.45243	LOC100507577,L ONP2	-0.969256	BST2	0.61614
RAP1A	-0.265257	WDR74	0.971111	ADCY7	-0.928357	JUND	0.309206
DDX20	0.106232	SNHG1,SNORD22	1.32888	FTO	-1.0951	LSM4	0.379829
CTTNBP2NL	-1.37939	ATL3	-0.135441	MMP2	0.177691	FKBP8	0.271376
CAPZA1	-0.763718	MACROD1	0.158904	LPCAT2	0.0380001	CRLF1	0.313125
MOV10	-0.145586	PPP1R14B	0.555103	OGFOD1	0.235169	COPE	1.20322
ATP1A1	0.0866855	BAD	0.354487	MT2A	1.5841	HOMER3	0.976262
PTGFRN	-1.30134	TRMT112	0.861415	MT1E	0.982653	SUGP2	-0.444266
TTF2	-1.10094	SF1	0.036187	MT1A	0.623335	TMEM161A	0.350809
WDR3	-0.479722	MEN1	0.257374	MT1X	0.331485	MEF2B,MEF2B,MEF2B,M EF2B,MEF2B	0.681538
PHGDH	0.987189	EHD1	0.912206	NUP93	0.063636	NR2C2AP	0.567859
SRGAP2B	-0.676021	CDCA5	0.872915	HERPUD1	1.82164	SUGP1	0.774515
LOC100996517	-0.587918	ZNHIT2	1.12847	CPNE2	-0.042844	ATP13A1	0.688769
NOTCH2NL	0.268796	SYVN1	1.13156	RSPRY1	-0.716431	UQCDFS1	0.395668
LIX1L	-0.88732	LTBP3	-0.146167	ARL2BP	-0.630027	ANKRD27	-0.425489
PIAS3	-0.210685	MAP3K11	0.558116	COQ9	0.264547	PEPD	0.326163
RNF115	0.126618	RELA	0.73269	POLR2C	0.489278	ALKBH6	0.780688
CHD1L	-0.0838822	RNASEH2C	0.440243	GPR56	-1.67989	POLR2I	0.934639
VPS45	0.298164	CFL1	0.214434	KATNB1	0.43531	YIF1B	0.562167
MRPS21	0.766084	FIBP	0.377142	USB1	0.12929	CAPN12	0.0536745
PRPF3	0.411738	FOSL1	2.75469	CKLF,CKLF- CMTM1,CMTM1	0.471366	ECH1	0.222794
ECM1,TARS2	0.151164	C11orf68	0.986791	CMTM3	-0.100595	HNRNPL	-0.284069
MLLT11	-0.115735	EIF1AD	0.534574	CBFB	-1.25001	SIRT2	0.584594
SCNM1,TNFAIP8L2, TNFAIP8L2-SCNM1	1.33364	YIF1A	0.721911	NOL3	0.601201	SARS2	-0.104662
PIP5K1A	-0.267489	RIN1	0.706014	E2F4	0.652772	PAF1	0.485297
PSMD4	0.765498	BRMS1	0.858478	TMEM208	1.01736	RPS16	0.989566

PSMB4	0.894339	B3GNT1	-0.154367	FAM65A	0.312086	FBL	0.504108
TUFT1	0.138656	MRPL11	0.582001	CTCF	-0.484171	AKT2	-0.36367
CHTOP	0.632718	ZDHC24	0.87156	THAP11	0.131621	C19orf47	0.286881
SNAPIN	-0.0145217	SPTBN2	-0.583676	NUTF2	0.232079	SERTAD3	0.900938
NPR1	-0.574979	PC	-0.888757	EDC4	-0.0877199	BLVRB	1.3849
INTS3	-0.543398	CLCF1_POLD4	0.801059	PLA2G15	0.242363	ADCK4_NUMBL	0.148112
RPS27	1.04482	PPP1CA	0.483886	SLC7A6	-1.03301	TGFB1	0.557933
UBAP2L	-0.260253	CORO1B	0.680835	PRMT7	-0.256223	B9D2	0.127228
HAX1	1.24551	TMEM134	0.389192	CIRH1A	0.232932	EXOSC5	0.845226
ATP8B2	-0.947131	PITPNM1	-0.278353	VPS4A	0.296658	ATP5SL	0.18039
CKS1B	0.6385	CDK2AP2	0.788776	NIP7	0.265553	RABAC1	0.657888
FLAD1	0.526665	LOC100996505	0.504192	CYB5B	0.0557996	DEDD2	1.62719
ZBTB7B	0.0374218	UNC93B1	- 0.00199382	DDX19B	0.744142	GSK3A	0.658934
ADAM15	0.203693	CHKA	0.809243	DDX19A	- 0.00108679	ERF	-0.0738192
EFNA1	0.260767	SUV420H1	-0.183548	SF3B3	-0.418168	PAFAH1B3	0.364287
SLC50A1	0.894121	C11orf24	0.293621	IST1	0.209595	ETHE1	0.68902
MTX1	0.701438	CPT1A	0.0358945	DHX38	0.0525539	XRCC1	0.131114
FDPS	0.50262	MRPL21	0.725502	PSMD7	0.177486	ZNF428	0.491357
RUSC1	0.423568	DHCR7	-0.361125	ZNRF1	-0.679969	PLAUR	1.14724
DAP3	0.570875	NUMA1	-0.0123639	GABARAPL2	0.323438	SMG9	1.04158
LAMTOR2	0.675619	LAMTOR1	0.844341	TERF2IP	0.53559	KCNN4	0.698608
LMNA	0.378755	ANAPC15	0.614066	CENPN	0.250605	ERCC2	-0.222204
SLC25A44	0.142064	CLPB	0.080393	ATMIN	-0.148906	PPP1R13L	0.164681
BGLAP,PMF1,PMF1- BGLAP	0.451025	PDE2A	0.529324	CMIP	-0.880117	ERCC1	0.543558
APOA1BP	0.229462	ARAP1	0.208436	CDH13	-0.670048	SNRPD2	0.767015
PRCC	0.736885	RAB6A	-0.476859	HSBP1	0.785438	FBXO46	-0.0499284
KIRREL	-0.718591	COA4	0.154888	WFDC1	0.540574	DMPK,DMWD	0.327045
DUSP23	0.758357	UCP2	-1.13047	USP10	-0.113429	SYMPK	0.0249982
PEA15	1.52691	P4HA3	-0.274828	COX4I1	0.916377	IRF2BP1	0.888848
NCSTN	-0.104779	PRKRIR	-0.869979	FOXF1	0.44537	MYPOP	-0.0955953
UFC1	0.755344	CLNS1A	0.08091	FOXC2	0.713653	DKFZp434J0226	0.953102
USP21	-0.010465	KCTD14,NDUFC2,NDUF C2-KCTD14	0.239784	MAP1LC3B	0.96396	STRN4	0.296241
NDUFS2	0.0594597	ALG8	-0.290067	ZC3H18	0.089938	SLC1A5	1.66075

SDHC	-0.089979	NARS2	-0.107701	CTU2	0.47142	AP2S1	0.781821
DUSP12	0.711631	PRCP	-0.125322	CDT1	0.48218	TMEM160	0.284518
ATF6	0.000760338	CCDC90B	-0.323672	TRAPPC2L	0.790407	NAPA	0.569076
UHMK1	-2.00965	CREBZF	-0.983841	SPG7	0.477003	LIG1	-0.585383
UAP1	0.267028	PICALM	-0.520823	RPL13	0.873331	KDELR1	0.120587
NUF2	-0.727585	CTSC	-0.55336	CPNE7	1.04549	RPL18	1.05046
PBX1	-2.18738	CHORDC1	-0.32531	CDK10	0.704362	RASIP1	1.45228
MGST3	0.330652	SLC36A4	-0.658698	LOC100128881,Z NF276	0.221348	BCAT2	0.437879
MIR3658,UCK2	0.294574	C11orf75	0.0933558	TCF25	-0.0647852	GYS1	0.0945459
POGK	-0.433802	MIR1304,SNORA18,SNO RA40,TAF1D	1.03189	TUBB3	0.876633	TEAD2	-0.236152
MPZL1	-0.192046	MRE11A	-1.25366	DEF8	0.935121	PIH1D1	0.75635
DCAF6	-0.944343	CWC15	0.684824	POLR3K	0.777704	NOSIP	0.974104
TIPRL	0.01295	MTMR2	-0.656406	NPRL3	0.156918	RRAS	0.447161
LOC100996595	-0.0624388	TMEM123	-1.64901	LUC7L	0.354027	IRF3	0.994284
ATP1B1	-0.567358	SLC35F2	0.198359	AXIN1	0.793462	PNKP	0.337146
BLZF1	0.149732	KDELC2	-1.12484	MRPL28	0.598869	AKT1S1	0.586225
C1orf112	-0.413368	RDX	-1.94476	TMEM8A	0.401878	IL4I1,NUP62	0.054116
PRRC2C	-1.74302	PPP2R1B	-1.19638	C16orf13	0.689176	JOSD2	1.22686
METTL13	0.410899	CRYAB	-0.466622	JMJD8	0.322562	C19orf48	1.17466
PRDX6	0.183622	TIMM8B	0.604459	NARFL	0.402238	ETFB	0.438892
DARS2	-0.707842	IL18	-0.619926	TSR3	0.737188	TFPT	1.18592
CACYBP	0.260593	ZNF259	0.866949	C16orf91,UNKL	0.435975	MBOAT7	-0.176013
FAM20B	-1.00688	PCSK7	-0.400775	CLCN7	1.11266	PPP1R12C	1.17262
TOR3A	0.153092	BACE1	-0.839379	NME3	0.389387	PPP6R1	0.41585
SOAT1	-0.356751	DDX6	-0.996947	MRPS34	0.673662	HSPBP1	0.596877
TOR1AIP1	-0.55143	BCL9L	-0.394309	SPSB3	0.833926	IL11	1.117
FLJ23867,QSOX1	0.700414	RPS25	0.641421	HAGH	0.592741	UBE2S	0.607542
XPR1	-1.4666	SLC37A4	-0.0419666	MSRB1	- 0.00185665	ISOC2	0.917375
IER5	1.09685	HYOU1	1.07278	RPS2	0.635246	ZNF579	0.912526
DHX9	-0.668406	H2AFX	0.335079	SNORA10	0.0287946	ZNF787	0.751884
LAMC1	-1.05151	DPAGT1	0.283808	ZNF598	0.708549	SLC27A5	0.831036
SMG7	-0.214784	MCAM	-0.11471	NTHL1	0.194956	CHMP2A	0.340293
TSEN15	-0.587245	THY1	0.107989	PKD1	-0.0677039	UBE2M	0.694115

PLA2G4A	-0.232063	HSPA8	0.259439	LOC100507303	1.01495	ACP1	0.312488
RGS2	0.662051	SRPR	0.432818	PGP	0.204987	TRAPPC12	0.647654
TROVE2	-0.756681	ADAMTS8	-1.51177	EC1	0.779639	RPS7	0.787047
CDC73	-0.461188	NCAPD3	-0.818278	TCEB2	0.829365	CPSF3	0.0296224
CFH	-0.820371	THYN1	0.429996	PKMYT1	0.766646	IAH1	0.109399
CRB1	-2.99563	CCDC77	-0.20954	HCFC1R1	-0.614	RRM2	-0.099891
C1orf53	0.351736	WNK1	-1.69126	TRAP1	0.294629	HPCAL1	0.101098
NEK7	-1.59748	ERC1	-1.23742	CREBBP	-1.19211	DDX1	-0.238632
CAMSAP2	-1.37713	ADIPOR2	-0.148719	ADCY9	-0.813668	RHOB	-0.430838
NAV1	-0.551311	FKBP4	0.304502	TFAP4	0.0529676	CENPO	-0.066722
IPO9,SHISA4	-1.50868	RHNO1	-0.177593	COR07,CORO7- PAM16,PAM16	1.40273	RAB10	-0.390599
TMM17A	0.0566405	TULP3	-0.289728	NMRAL1	0.346744	HADHB	0.0155594
RNPEP	0.0929368	TEAD4	0.440131	CDIP1	0.923348	EPT1	-0.770421
TMEM183A	0.0533055	RAD51AP1	-0.596618	FAM100A	1.03386	C2orf18	0.223158
ZBED6,ZC3H11A	-0.411745	NDUFA9	0.328012	GLYR1	-0.131039	CENPA	-0.678561
SNRPE	-0.361146	CD9	0.454285	NAGPA	0.633348	TMEM214	0.279368
SRGAP2	-0.718595	LTBR	0.62179	FAM86A	0.489049	AGBL5	-0.0719162
MAPKAPK2	0.351743	NCAPD2	-1.2207	CARHSP1	-0.122326	ATRAID	0.311635
CD55	0.405367	GAPDH	0.174554	USP7	-0.547532	CAD	-0.853404
CD46	-0.962174	COPS7A	0.254634	EMP2	-0.142485	SNX17	0.192024
DTL	-0.389297	PTMS	-0.171485	DEXI	0.372759	NRBP1	0.11694
PPP2R5A	-0.572321	LEPREL2	0.228613	LITAF	-0.297888	ZNF512	-0.847423
NENF	1.17018	USP5	0.032712	TXNDC11	0.822492	GPN1	0.333442
SMYD2	-0.0219212	TP1	0.47993	ZC3H7A	-0.960928	SLC4A1AP	0.268319
CENPF	-1.78395	ATN1	-0.156315	BCAR4,RSL1D1	0.146385	MRPL33	0.837896
KCTD3	-1.0027	C12orf57,RNU7-1	1.24028	GSPT1	-0.0405992	BRE	-0.134292
RRP15	0.601628	EMG1	0.707156	PARN	0.100857	FOSL2	-0.346255
IARS2	-0.310402	PEX5	0.230047	NTAN1	0.275992	PPP1CB	-1.50438
MARC1	-1.26594	NECAP1	-0.112059	RRN3	-0.371106	WDR43	-0.544593
MIA3	-0.0468569	GABARAPL1	1.25226	FOPNL	-0.268549	LBH	-0.230297
BROX	-0.620402	CDKN1B	-0.895467	NOMO2	-0.657085	SLC30A6	-1.02837
CAPN2	0.301704	DDX47	0.164229	RPS15A	0.726012	YIPF4	-0.221044
FBXO28	-0.792692	GPRC5A,MIR614	-0.1251	ARL6IP1	-1.04499	LTBP1	-1.24019
DEGS1	-0.674853	EMP1	1.34666	SMG1	-2.19445	CRIM1	-1.51163
CNIH4	-0.0290267	STRAP	-0.072298	GDE1	0.0391917	LOC100505876	-0.830262

SRP9	-1.15203	DERA	-0.0394162	C16orf88	-0.400785	GEMIN6	0.469068
EPHX1	0.648771	MGST1	-0.0229195	THUMPD1	-0.987724	MORN2	0.339213
H3F3A	0.0814425	PLEKHA5	-1.54813	CDR2	-0.0752472	EML4	-1.39238
ADCK3	0.151256	AEBP2	-1.27212	GGA2	-0.0899634	LOC100130921,MTA 3	-0.275418
SNAP47	0.192071	PDE3A	-2.43983	EARS2	-0.30285	EPAS1	0.417379
ARF1	0.475747	GOLT1B	-1.02754	NDUFAB1	0.795361	RHOQ	-0.488339
GUK1	0.79105	CMAS	-0.0335749	ARHGAP17	-0.735699	CRIP1	-0.379644
RNF187	0.511128	ETNK1	-0.0171651	NSMCE1	0.115797	TTC7A	-0.7378
RAB4A,SPHAR	-0.0795048	RASSF8	-1.26909	GTF3C1	-0.269996	BCYRN1	-1.11953
URB2	0.105497	FGFR1OP2	0.286691	XPO6	-0.124815	MSH2	-0.637187
GALNT2	-0.905443	MED21	-1.01231	CLN3	0.436913	MSH6	-0.765685
COG2	-0.0869732	STK38L	-1.76054	NUPR1	2.56444	CHAC2	-0.460852
ARV1	-0.297771	PPF1BP1	-0.608365	MIR4721,TUFM	0.466302	ERLEC1	0.165601
GNPAT	-0.281487	MRPS35	-0.31558	LOC100289283	-0.182251	SPTBN1	-1.40226
DISC1,TSNAX,TSNA X-DISC1	-0.22666	CCDC91	-0.279016	CDIPT	0.573708	RPS27A	0.757327
NTPCR	0.465279	DDX11	0.402727	HIRIP3	0.243963	CCDC104	0.391196
KCNK1	0.574298	DNM1L	-0.929678	MAPK3	0.109391	C2orf74,KIAA1841	-0.165347
COA6	0.776722	PPHLN1	-0.426297	CD2BP2	0.804584	COMMD1	0.780647
TBCE	0.380384	ANO6	-0.937536	TBC1D10B	0.403237	MDH1	-0.0814404
FMN2	-1.00768	TMEM106C	-0.139482	DCTPP1	0.559808	UGP2	-0.361632
EXO1	0.0970886	PFKM	-0.557837	SEPHS2	0.93567	ACTR2	-1.25185
DESI2	-0.757946	TUBA1C	0.403968	ZNF768	0.607496	MEIS1	-1.31954
SCCPDH	0.00116321	TROAP	-0.0739395	BCL7C	0.682163	PNO1	0.403002
ZNF672	0.0468859	SPATS2	-0.242648	ZNF668	0.615085	ANTXR1	-0.716917
NOC2L	0.27215	TMBIM6	0.141162	VKORC1	0.55035	ANXA4	-0.491235
C1orf159	0.313059	SMARCD1	-0.107245	C16orf58	0.405299	SNRNP27	0.50324
SDF4	0.462246	COX14	0.734835	SHCBP1	-0.652562	PCBP1	0.169873
UBE2J2	0.74459	LARP4	-0.975741	VPS35	-0.43757	PCYOX1	-1.33219
ACAP3	0.171465	DIP2B	-1.37183	C16orf87	-0.435897	NAGK	1.22613
CPSF3L	0.347634	ATF1	-0.548698	DNAJA2	0.307523	MPHOSPH10	-0.367903
DVL1	0.530438	LETMD1	0.633852	NETO2	-0.182246	ZNF638	-0.186893
AURKAIP1	0.781593	DAZAP2	-0.0735861	ITFG1	-0.785829	SPR	0.524184
CCNL2	0.0618495	NR4A1	0.487829	BRD7	-0.227113	SMYD5	0.282279
MRPL20	0.745293	C12orf44	1.2889	CRNDE	-0.782757	CCT7	0.592807

SSU72	0.664333	KRT7	0.430383	AMFR	0.227537	STAMPB	-0.225663
CDK11B	0.129545	KRT18	0.361398	NUDT21	0.213267	DGUOK	0.495554
GNB1,NADK	-0.284097	EIF4B	-0.633527	FAM192A	0.140754	MTHFD2	0.437234
C1orf86	0.950771	IGFBP6	1.31441	CIAPIN1	0.369447	WDR54	0.544792
PEX10	0.49411	MFSD5	0.819546	KIFC3	0.657486	INO80B,INO80B-WBP1,WBP1	0.47501
PANK4	0.0835556	ESPL1	-0.771057	C16orf80	0.799827	HK2	-0.416395
MEGF6	0.113294	PFDN5	0.979545	CSNK2A2	0.396886	POLE4	0.798655
WRAP73	0.50301	C12orf10	1.21901	CNOT1	-0.918837	MRPL19	-0.37545
LRRC47	0.539972	SP1	-0.751939	SLC38A7	0.801723	TMSB10	0.706799
CEP104	-0.505113	PRR13	0.396886	GOT2	0.0533676	MAT2A	-0.271525
C1orf174	0.0900945	PCBP2	-0.102704	DYNC1LI2	-0.703013	RNF181	1.01504
RPL22	0.240592	TARBP2	0.543461	NAE1	-0.684784	USP39	0.0478324
ICMT	-0.535233	HOXC10	0.239523	FAM96B	1.06588	PTCD3	-0.562959
ACOT7	0.833528	HNRNPA1	-0.271822	B3GNT9	0.4135	MRPL35	0.660749
KLHL21	1.33762	COPZ1	0.422682	FHOD1	0.292608	LINC00152	1.3381
DNAJC11	0.160141	BLOC1S1,BLOC1S1-RDH5,RDH5	0.585571	ATP6V0D1	0.898354	CIAO1	0.0729189
ENO1	0.284888	ORMDL2	0.205583	CENPT	0.638911	NCAPH	-0.836376
CLSTN1	0.0402635	CDK2	-0.286236	PSMB10	0.945331	COX5B	0.562406
LZIC	-0.573298	RAB5B	-0.458689	SLC7A6OS	0.43249	UNC50	0.461449
DFFA	-0.439742	RPS26	1.14611	CHTF8	0.0709317	LIPT1,MRPL30	-0.128407
SRM	0.753556	PA2G4	0.389339	COG8,PDF	0.458737	EIF5B	-0.178669
EXOSC10	-0.132107	RPL41	0.934858	NQO1	0.761328	PDCL3	0.549542
MTOR	-0.263361	ESYT1,ZC3H10	-0.35633	NOB1	0.552556	NPAS2	0.200616
MAD2L2	0.737036	MYL6B	0.704935	EXOSC6	0.283745	RPL31	0.904752
KIAA2013	0.53168	MYL6	0.506141	AARS	0.573261	C2orf29	-0.341384
EPHA2	0.897962	NABP2	0.409855	COG4	0.0129849	MAP4K4	-0.340476
CROCCP2,NBPF1	-0.0692756	LRP1	-2.6474	MTSS1L	-0.417862	MRPS9	0.14826
MFAP2	-0.480157	SHMT2	0.867686	VAC14	0.359294	C2orf49	0.469156
ATP13A2	0.0619983	MARS	0.93152	AP1G1	-0.995044	LIMS1	-0.805857
SDHB	0.527523	MBD6	-0.126572	GLG1	-0.556239	RANBP2	-0.413807
RCC2	-0.185047	DTX3	0.62919	RFWD3	-0.5757	TTL	-0.359453
UBR4	0.474486	OS9	0.631457	BCAR1	0.332389	CHCHD5	0.828526
EMC1	-0.455063	LOC100130776	0.40652	CFDP1	-0.151375	SLC20A1	0.414296
AKR7A2	0.401205	TSFM	0.205942	KARS	0.329082	CBWD2	-0.282761

CAPZB	-0.125754	XPOT	-0.308673	CMC2	0.470165	ACTR3	-0.487051
MUL1	0.497308	TBK1	-0.669035	GCSH	-0.764678	DDX18	-0.582014
DDOST	0.327357	RASSF3	-0.897592	MPHOSPH6	-0.101531	STEAP3	-0.496149
HP1BP3	-1.11747	MSRB3	-1.2818	MBTPS1	-0.831978	DBI	0.367719
EIF4G3	-1.3078	CAND1	-1.26216	COTL1	0.487759	RALB	-0.0450417
ECE1	-0.110648	RAP1B	-0.719674	ZDHHC7	- 0.00755717	TSN	-0.582857
USP48	-1.07855	NUP107	-0.181466	GIN52	- 0.00682847	UGGT1	-1.04197
HSPG2	-2.04872	CPSF6	-0.295467	EMC8	0.362308	MZT2B	0.475771
LUZP1	-0.89605	YEATS4	-0.444098	ZCCHC14	-0.751914	IMP4	0.735609
HTR1D	-0.147388	CCT2	0.181857	KLHDC4	0.368948	PTPN18	-0.133864
HNRNPR	-0.684066	CNOT2	-0.507164	SLC7A5	-0.679712	PLEKHB2	0.508734
ID3	-0.5318	TMEM19	-1.24472	CYBA	1.13209	RAB3GAP1	-0.354775
GALE	1.11572	RAB21	-0.0231025	MVD	0.987678	R3HDM1	-1.40305
SRSF10	-0.597139	ATXN7L3B	-0.330069	PIEZO1	-1.01782	UBXN4	-0.696639
RUNX3	0.95491	GLIPR1	0.0270958	APRT	0.690195	KYNU	0.971909
SYF2	0.752831	MRPL42	-0.504681	GALNS	0.0485836	GPD2	-1.73041
C1orf63	0.213276	METAP2	-0.187869	ANKRD11	0.793593	PKP4	-1.02826
MIR3917,STMN1	-0.268919	SNRPF	0.857484	CHMP1A	0.398783	MARCH7	-0.761878
GPATCH3,GPN2	0.699932	ELK3	-0.507382	FANCA	-0.393849	TANK	-0.181625
WASF2	-0.333509	NEDD1	-1.44373	FAM57A	0.298982	PSMD14	0.346685
RPA2	0.582987	TMPO	-1.37972	TIMM22	0.17751	PPIG	-0.387651
DNAJC8	0.364166	SLC25A3	0.308273	PITPNA-AS1	0.415938	SSB	-0.287884
SNHG12,SNORA61	3.07991	ACTR6	-0.727889	RPA1	-0.539047	GORASP2	0.14344
TAF12	0.553096	SCYL2	-1.11921	DPH1,OVCA2	0.667915	CYBRD1	-0.899794
SRSF4	-0.0887925	UTP20	-1.22285	PAFAH1B1	-0.179035	DYNC1I2	-0.100081
MECR	0.301656	CHPT1	-0.752227	RAP1GAP2	-0.217847	HAT1	-0.283457
PUM1	-0.964363	DRAM1	0.271674	EMC6	1.02819	DLX1	-0.300229
SNRNP40	0.180282	PARBP	-1.81978	PSMB6	0.692689	ITGA6	-0.268772
FABP3	0.586416	HSP90B1,MIR3652	0.593426	MINK1	-0.326411	ZAK	-1.44144
PEF1	0.272952	TDG	-0.937891	RNF167	0.799558	CDCA7	-1.36092
BAI2	-0.0374628	TXNRD1	-0.145313	ENO3	-0.467247	H3F3AP4	-0.287384
PTP4A2	-0.233502	C12orf45	0.766291	KIF1C	-0.428515	HOXD9	-0.434512
MARCKSL1	0.351021	KIAA1033	-0.99731	RABEP1	-0.625723	MTX2	0.240347
BSDC1	0.725204	C12orf75	0.562089	RPAIN	0.696546	HNRNPA3,MIR4444- 1	-1.15177

ZBTB8OS	0.739808	C12orf23	-0.922786	MIS12	0.225185	AGPS	-1.28301
SYNC	-1.0049	PWP1	-0.189739	FAM64A	-0.230196	UBE2E3	-0.611629
YARS	0.675802	ISCU	0.433854	TXNDC17	0.423561	SSFA2	-1.13382
TMEM54	0.859021	UNG	-0.330319	C17orf49,RNASEK ,RNASEK- C17orf49	1.06576	DNAJC10	-0.337132
AK2	0.368369	UBE3B	-0.303902	ACADVL	0.567216	NUP35	-0.0211307
MIR3605,PHC2	0.836063	MVK	-0.801057	ELP5	0.75317	ZC3H15	-0.267457
LOC100996496,SFP Q	-0.449134	IFT81	-1.91481	EIF5A	0.286541	ITGAV	-2.01475
KIAA0319L	-0.011132	ATP2A2	-0.700383	POLR2A	-0.766608	GULP1	-1.29293
PSMB2	0.437699	FAM216A	0.363077	EIF4A1,SENPA3,SE NP3-EIF4A1	0.400762	COL3A1,MIR3606	-1.74313
CLSPN	-1.34696	ALDH2	0.739994	MPDU1	0.640548	WDR75	-0.2214
TRAPPC3	0.808332	MAPKAPK5	0.358395	WRAP53	0.0772932	ASNSD1	-0.32073
LSM10	0.700521	ERP29	0.54307	CHD3	-0.895904	INPP1	1.1412
MRPS15	0.772767	TRAFD1	-0.294486	CNTROB	0.284706	NAB1	-0.881581
GNL2	1.00097	PTPN11	-1.26674	PFAS	-0.662895	GLS	-0.916841
C1orf109	0.74001	C12orf52	0.255453	RANGRF	0.785452	MYO1B	-0.193107
YRDC	1.11734	TPCN1	-0.445295	NDEL1	0.363345	SLC39A10	-2.58214
SF3A3	0.117797	PLBD2	-0.448593	GLP2R	-1.10361	COQ10B	0.104347
FHL3	0.278202	RFC5	-0.214281	MYOCD	-2.7404	HSPE1,HSPE1- MOB4,MOB4	0.574099
RRAGC	0.689722	PEBP1	-0.0723239	UBB	0.640643	C2orf47	0.191719
GJA9,GJA9- MYCBP,MYCBP	-0.656426	HSPB8	1.04498	C17orf76- AS1,SNORD49B	0.748116	SPATS2L	0.171523
PABPC4	0.443582	COX6A1	1.05376	MPRIP	-0.519366	SGOL2	-1.76575
TRIT1	0.0490229	GATC	-0.137922	RAI1	-0.885286	BZW1	-0.568638
PPT1	0.030346	DYNLL1	0.378039	DRG2	0.495773	NIF3L1	0.160531
CITED4	2.33442	RNF10	0.245676	ALKBH5	0.167262	NDUFB3	0.729212
SCMH1	-0.170052	MLEC	0.19413	TRIM16L	0.625767	CASP8	0.137587
FOXJ3	-0.840687	RNF34	-0.0278022	FAM18B1	0.126158	NOP58	0.496458
LEPRE1	0.218039	ORAI1	1.2681	PRPSAP2	0.153594	ABI2	-0.852339
SLC2A1	0.215556	PSMD9	0.646302	ALDH3A2	-0.454468	EEF1B2	0.679499
EBNA1BP2	0.66036	KNTC1	-1.08504	SPECC1	-0.640581	RPE	-0.856165
ELOVL1	0.543198	DENR	-0.621146	MAP2K3	1.06987	CPS1	-2.20874
MED8	0.69872	ARL6IP4	0.489244	WSB1	-0.382365	ATIC	0.029371
HYI	1.02916	SETD8	0.336506	TMEM97	-0.168999	XRCC5	-0.232925

SLC6A9	0.94519	TMED2	-0.214547	TNFAIP1	0.277939	RPL37A	0.996523
ERI3	0.138661	DDX55	0.114191	TMEM199	0.55934	ARPC2	0.305036
EIF2B3	0.355621	GTF2H3	-0.651302	SUPT6H	-0.26802	PNKD	0.381392
HECTD3	-0.0126611	FAM101A,ZNF664,ZNF664-FAM101A	-1.19436	RPL23A	0.652782	CTDSP1	-0.00394441
PRDX1	0.224676	AACS	0.0916536	TRAF4	0.690976	RQCD1	-0.143138
GPBP1L1	-0.0102204	RAN	0.203923	ERAL1	0.32831	BCS1L	0.602713
POMGNT1	0.540548	SFSWAP	0.269677	CPD	-1.60371	FAM134A	0.268537
LRRC41	-0.0690173	MMP17	0.307447	SUZ12	-1.54623	ZFAND2B	0.511679
ATPAF1,KIAA0494	-0.278273	ULK1	-0.272166	RHOT1	-1.25074	DNAJB2	1.62854
STIL	-1.20979	PUS1	0.831169	MIR632,ZNF207	-0.18505	GMPPA	0.885939
FAF1	0.163097	NOC4L	0.598297	PSMD11	-0.266691	ACSL3	-0.953863
MIR761,NRD1	-0.648301	FBRSL1	0.192475	AP2B1	-0.759687	MRPL44	0.266226
KTI12,TXNDC12	0.158565	PXMP2	0.136145	TAF15	-0.686224	MFF	0.0450968
ORC1	-0.234708	PGAM5	0.0889963	ZNHIT3	0.740996	AGFG1,MIR5703	-0.21698
SELRC1	-0.21356	NINJ2	0.0376376	PIGW	-0.0854849	SP100	0.277004
C1orf123	0.694442	FOXM1	-0.352016	GGNBP2	-0.146501	CAB39	-0.592011
MAGOH	0.695371	TNFRSF1A	-0.030939	AATF	0.915613	ITM2C	0.117558
LRP8	-0.362937	MRPL51	0.515357	DUSP14	0.594739	PSMD1	-0.0662229
TMEM48	-1.26535	LOC100996356	0.619483	MRPL45	0.265433	ARMC9	0.099555
YIPF1	0.409657	NOP2	0.627855	ARHGAP23	-0.573951	LOC100996253	0.528103
HSPB11	0.257591	CHD4	0.0658832	MLLT6	-0.727876	MIR1244-1,PTMA	-0.310547
TMEM59	-0.14632	ZNF384	0.738418	CISD3	0.456966	COPSTB	0.101001
SSBP3	-1.46809	MLF2	0.343252	PSMB3	0.954764	ALPP	-2.54646
DHCR24	-1.05646	CDCA3	-0.253809	LASP1	-0.312461	EIF4E2	0.575525
USP24	-1.18576	PHB2	0.580843	RPL19	0.845305	ATG16L1	-0.076211
MYSM1,TACSTD2	0.49998	LPCAT3	-0.73444	CDK12	-0.572006	DGKD	0.0747246
JUN	1.68256	MFAP5	-0.250978	ERBB2	-0.663565	SH3BP4	-0.518136
TM2D1	0.467832	M6PR	0.54908	PSMD3	0.405918	AGAP1	-0.802645
ITGB3BP	-0.585877	KLRAP1,MAGOHB	0.47324	THRA	-1.38561	CXCR7	-1.09896
JAK1	-0.651293	CSDA	0.554129	MSL1	-0.224452	COPS8	0.161497
SERBP1	-0.153428	HEBP1	0.64166	CASC3	-0.424861	LRRFIP1	-0.65028
GNG12	-1.12317	WBP11	0.0686011	CDC6	0.348005	RAMP1	0.707066
WLS	0.308327	EPS8	-0.214697	IGFBP4	0.307989	SCLY,UBE2F,UBE2F-SCLY	0.299273
DEPDC1	-2.13931	RECQL	-0.420525	TMEM99	0.459455	ASB1,TRAF3IP1	0.0768105

LRRRC40	-1.15299	LDHB	0.165068	EIF1	1.51926	TWIST2	-0.185226
ANKRD13C	0.11938	KIAA0528	-1.52508	FKBP10	0.218041	GPC1	-0.0141281
ZRANB2	-0.859471	BCAT1	-1.68328	CNP	-0.0701614	RNPEPL1	0.31394
CRYZ	-0.685488	KRAS	-1.52882	NKIRAS2	0.320354	PPP1R7	0.501545
PIGK	-0.732362	ASUN	-0.0772831	ATP6V0A1,MIR50 10	0.429642	SEPT2	-0.822273
ZZZ3	-0.604003	TM7SF3	-0.440397	NAGLU	0.0545123	BOK	0.171945
USP33	-1.35033	ERGIC2	-0.694117	COASY	0.394162	ATG4B	0.762262
FUBP1	-0.239174	TMTC1	-0.632841	MLX	0.129085	TMEM18	0.506921
GNG5	0.450588	IPO8	-1.24507	TUBG1	0.413048	PXDN	-1.12026
C1orf52	0.558029	FAM60A	-0.636942	VPS25	0.917141	TSSC1	0.41747
DDAH1	-1.15159	YARS2	0.22454	PSME3	0.0481621	ADI1	0.292668
SEP15	-0.339678	CPNE8	-0.674561	RPL27	0.694271	RNASEH1	0.122325
GTF2B	0.709939	ZCRB1	0.0722472	NBR1	-0.31511	ITGB1BP1	0.572304
LOC100996620.ZNF 644	-1.04171	TWF1	-1.0124	DHX8	-0.390523	ADAM17	-0.456855
FAM69A	-1.7913	SCAF11	-1.22986	G6PC3	0.392714	YWHAQ	-0.719387
TMED5	-0.735653	SLC38A1	-0.490625	TMUB2	0.680552	ODC1	0.830925
BCAR3	0.937997	SLC38A2	-1.12184	GRN	0.631126	NOL10	-0.223048
DNTTIP2	0.598509	AMIGO2	0.73179	FZD2	-0.682393	PDIA6	0.426836
GCLM	0.467774	HDAC7	-0.0202552	NMT1	0.240771	ROCK2	-1.77834
ARHGAP29	-1.22351	KANSL2	0.66208	HEXIM1	-0.0687519	TTC32,WDR35	0.125196
F3	1.17567	DDX23	-0.146914	FMNL1	0.144596	LAPTM4A	-0.560169
CNN3	-0.0698848	FKBP11	1.20254	NSF	-0.478545	SDC1	0.313651
ALG14	0.251541	ARF3	-0.261271	GOSR2	0.577704	PUM2	-1.03343
DPYD	-1.82146	PRKAG1	0.413587	NPEPPS	-0.532874	SF3B14	0.51678
EXTL2	-1.18293	TUBA1B	-0.0115962	KPNB1	-0.746207	TP53I3	0.916154
DPH5	0.275279	TUBA1A	-0.434998	PNPO	-0.130054	PTRHD1	0.672154
SLC25A24	-1.00479	MCRS1	0.419286	CDK5RAP3	0.827575	ADCY3	0.181745
HENMT1	0.304979	RACGAP1	-0.886362	NFE2L1	0.242785	HADHA	0.349807
CLCC1	-0.563895	CERS5	0.615347	CALCOCO2	0.233013	OST4	0.61765
TAF13	0.399563	LIMA1	-0.609745	ATP5G1	0.554473	CGREF1	0.219043
PSRC1	-0.339423	CSRNP2,TFCP2	-0.495653	UBE2Z	0.135578	PREB	0.548566
PSMA5	0.900758	KRT80	0.158813	IGF2BP1	-0.396906	SLC5A6	0.470652
GSTM3	0.29544	KRT8	-0.412021	KAT7	-0.141025	MPV17	0.375
LAMTOR5	0.518274	SPRYD3	0.316841	ITGA3	0.147023	GTF3C2	-0.343034

LRIF1	0.310297	RARG	0.0732679	ABCC3	-0.628477	EIF2B4	0.455119
DRAM2	-0.372527	AAAS	0.464664	LUC7L3	-0.0794609	PPM1G	0.404734
WDR77	0.270468	ATF7	-0.0868298	NME1,NME1- NME2,NME2	0.749855	SUP7L	0.550277
RHOC	0.901214	ATP5G2	0.506901	UTP18	0.00989079	MEMO1	-0.117683
SLC16A1	-0.725033	SMUG1	0.588055	SCPEP1	0.292021	DPY30	0.0814586
PHTF1	-0.388549	CBX5,MIR3198-2	-1.33854	AKAP1	-0.304931	FAM98A	-0.735017
BCAS2	0.188101	ITGA5	0.367804	MSI2	-1.1435	FEZ2	-0.613366
CSDE1,NRAS	-0.641988	CD63	1.18973	DYNLL2	-0.261978	CEBPZ	-0.096855
SIKE1	0.672481	SARNP	0.328594	RAD51C	0.416373	PRKD3	-1.22429
CD58	-0.570587	DNAJC14	- 0.00356758	PRR11	-1.17693	CDC42EP3	-0.142323
IGSF3	-1.54853	WIBG	0.789684	DHX40	-0.461444	CYP1B1	-1.10733
WARS2	-0.821314	SMARCC2	-0.776619	CLTC	-0.84243	ATL2	-1.05129
NOTCH2	-1.89894	ANKRD52	-0.942806	MIR21,VMP1	-0.182074	HNRPLL	-0.672093
POLR3C	0.762996	CS	-0.33149	MRC2	-0.626409	SRSF7	0.109756
SF3B4	0.682641	CNPY2,PAN2	0.760753	DCAF7	-0.371332	COX7A2L	0.651896
ANP32E	-1.5764	TIMELESS	-0.593509	TACO1	0.637961	ZFP36L2	0.429585
APH1A	0.216358	BAZZA	-0.852416	DDX42	-0.17793	LRPPRC	-0.811933
MCL1	-0.0443302	ATP5B	0.102024	PSMC5	0.565873	PREPL	-1.14263
ENSA	-0.022169	PTGES3	-0.858623	PRKCA	-1.26473	SIX2	0.129849
GOLPH3L,HORMAD 1	-0.61088	NACA	0.610248	PITPNC1	0.0716565	PIGF	-0.596808
ARNT	-0.881166	TMEM194A	-0.359099	NOL11	-0.514719	MCFD2	-0.102341
CERS2	0.52362	STAT6	-0.0783021	KPNA2	-0.192434	CALM2	-0.237758
CDC42SE1	0.172253	DCTN2	0.36689	AMZ2	0.351653	FBXO11	-1.08237
VPS72	0.703072	B4GALNT1	-0.21197	PRKAR1A	-1.18317	PSME4	-0.908725
PI4KB	0.212435	CDK4	0.466766	RPL38	0.991682	RTN4	-0.409109
RFX5	-0.721081	METTL1	0.613504	MIR3615,SLC9A3 R1	-0.4829	MTIF2	-0.0477122
SELENBP1	-0.586572	CTDSP2	-0.51701	CDR2L	0.498529	SMEK2	-0.807666
MRPL9	0.601191	GNS	-0.642668	ICT1	0.728412	PNPT1	-0.711654
S100A10	1.0868	LLPH	0.476275	NUP85	0.246122	EFEMP1	-0.994512
S100A11	1.21748	TMBIM4	-0.500626	MRPS7	0.481245	FANCL	-0.763779
S100A6	1.02314	KRR1	-0.450015	SAP30BP	0.764476	USP34	-0.975364
S100A4	0.137413	NAP1L1	0.0300679	UNK	-0.299972	XPO1	-1.56885
S100A2	0.726625	BBS10,OSBPL8	-1.56625	CDK3,TEN1,TEN1	0.900452	CCT4	0.195777

				-CDK3			
S100A16	0.894109	CSRP2	0.0556356	FAM100B	1.08645	RAB1A	-0.279442
S100A13	1.21542	E2F7	-0.830599	SPHK1	0.902908	SPRED2	0.518518
ILF2	0.596938	PAWR	-0.164808	SNHG16	0.86321	C1D	0.197682
DENND4B	-0.0441754	PPP1R12A	-1.84753	METTL23	0.25741	WDR92	-0.622877
CRTC2	0.978999	CCDC59	0.331572	MFSD11	-0.50534	PPP3R1	-0.599417
SLC39A1	0.908223	ATP2B1	-0.568258	LINC00338,SEC14 L1	-0.342211	NFU1	0.381159
JTB	0.441403	LUM	-1.33166	SEPT9	-0.123678	SNRPG	0.63644
RAB13	0.43732	DCN	-1.14531	SYNGR2	0.334874	FAM136A	0.402042
TPM3	0.0747556	BTG1,LOC256021	0.855331	AFMID	-0.116483	TEX261	0.0420505
C1orf43	0.485544	UBE2N	-0.203181	BIRC5	-0.195599	PRADC1	0.467311
UBE2Q1	0.508716	NDUFA12	0.633241	CBX2	-0.393343	TPRKB	0.191212
ADAR	-0.724116	NTN4	0.216049	GAA	-0.0489676	DUSP11	0.300152
PMVK	0.71402	LTA4H	0.11763	RPTOR	-0.150987	BOLA3	0.436319
PYGO2	-0.282183	IKBIP	-0.689733	BAIAP2	0.560188	MOB1A	-0.742908
SHC1	0.0242553	ARL1	0.131949	C17orf89	0.256204	DCTN1	-0.26739
DPM3	0.0587517	GNPTAB	-1.29363	CCDC137	0.978502	MOGS	0.426195
KRTCAP2	0.918197	NUP37	0.290323	HGS	0.699679	CCDC142,MRPL53	0.85069
MUC1	-0.695855	GLT8D2	-0.942142	MRPL12	0.65066	PCGF1	0.757776
GBA	0.0503077	NUAK1	-0.375353	SLC25A10	-0.297628	AUP1	1.33122
FAM189B	0.223918	CKAP4	0.018267	ANAPC11	0.313246	SUCLG1	0.303033
SCAMP3	0.819262	CRY1	-0.0731961	RAC3	0.353332	TRABD2A	-1.40911
ASH1L,MIR555	-0.917587	SART3	-0.357719	GPS1	0.338926	TGOLN2	-0.791329
YY1AP1	0.28855	CORO1C	0.0384657	SLC16A3	0.0079441	CAPG	0.858259
KIAA0907	0.0961014	ALKBH2	0.734646	NARF	0.408163	LOC90784,POLR1A	-1.11201
ARHGEF2	0.894144	KCTD10	-0.437199	FOXK2	-0.137152	IMMT	-0.0231208
SSR2	1.10953	GLTP	0.203405	FN3KRP	0.23246	CHMP3,RNF103,RN F103-CHMP3	-0.362392
UBQLN4	-0.0136739	ANAPC7	-0.317002	TBCD	-0.637144	MRPS5	0.222354
SMG5	0.643123	ARPC3	0.286957	METRNL	0.873331	STARD7	-0.457843
C1orf85	0.389909	GPN3	-0.475257	FAM101B	-0.918827	TMEM127	-0.0659285
CCT3	0.262194	VPS29	-0.152421	GEMIN4	-0.130102	SNRNP200	-0.692135
MEF2D	0.202643	PPP1CC	-0.990439	GLOD4	0.357302	LMAN2L	0.161193
IQGAP3	0.411932	ATXN2	-1.1443	NXN	-0.508189	ANKRD39	0.889055
GPATCH4	0.349388	NAA25	-1.0593	ABR	0.954276	ACTR1B	-0.135989

CRABP2	-0.258364	RPL6	0.475136	YWHAE	-0.160105	MITD1	0.394372
ISG20L2	0.140942	DDX54	0.0851472	CRK	-0.372611	TXNDC9	0.26341
MRPL24	0.671478	C12orf49	-0.47915	MYO1C	-0.48958	RNF149,SNORD89	0.259952
HDGF	-0.244248	FBXO21	-0.697192	PITPNA	0.179148	FHL2	-0.303688
TAGLN2	0.239325	WSB2	0.269514	PRPF8	-1.01487	UXS1	-0.132587
DCAF8	- 0.00808712	RAB35	0.432373	TSR1	0.0184806	SEPT10	-0.487803
PEX19	-0.135561	GCN1L1	-0.759964	KIAA0664	-0.0627509	BUB1	-1.04235
COPA	-0.177363	RPLP0	0.775943	P2RX5,P2RX5- TAX1BP3,TAX1BP 3	0.438738	LOC541471	1.33404
USF1	0.391543	PXN	0.317451	ITGAE	0.485635	ANAPC1	-1.05721
PFDN2	1.03682	TRIAP1	0.190759	C17orf85	-0.416742	CKAP2L	-0.829652
DEDD	0.145645	SRSF9	0.164807	ANKFY1	-1.07453	LOC100506748,SLC 35F5	-0.97075
B4GALT3	0.417877	COQ5	-0.0380604	UBE2G1	-0.978456	CLASP1	-1.00157
ALDH9A1	- 0.00388269	POP5	0.583628	MYBBP1A	-0.0316155	MKI67IP	0.0854859
TMCO1	0.406254	CAMKK2	-0.526441	PELP1	0.366134	BIN1	0.0199838
CREG1	0.34285	ANAPC5	-0.153889	SLC25A11	0.305204	ERCC3	0.276516
MPC2	0.319968	RHOF	0.369841	PFN1	0.598367	IWS1	0.285884
NME7	0.241116	HPD	-1.13202	SPAG7	0.13401	LIMS2	-0.0729476
PIGC	0.156478	DIABLO,VPS33A	0.343285	NUP88	0.24233	WDR33	-0.395337
CENPL	-0.534564	CLIP1	-1.03145	C1QBP	0.522312	POLR2D	0.333554
GASS,SNORD80	1.83822	RSRC2	0.384936	DHX33	-0.683098	AMMECR1L	-0.160356
MRPS14	-0.104109	VPS37B	0.417817	DERL2	0.611402	SMPD4	-0.257082
KIAA0040	-0.919057	CDK2AP1	-0.876095	DVL2	-0.0276657	FAM168B	-0.470556
RFWD2	0.00738211	SBN01	-1.08538	PHF23	0.498006	MZT2A	0.257609
TOR1AIP2	-0.165728	EIF2B1	0.279599	GABARAP	0.436425	MCM6	-1.13694
ACBD6	0.341119	NCOR2	-0.218691	CTDNEP1	0.440243	DARS	-0.387278
STX6	-0.157343	SCARB1	-0.276606	GPS2	0.327419	CXCR4	0.105412
GLUL	-0.902975	UBC	1.36011	C17orf61,C17orf61 -PLSCR3,PLSCR3	0.239464	ORC4	-0.861093
ARPC5	-0.638102	DHX37	-0.0970154	ZBTB4	-0.460189	MMADHC	0.176006
IVNS1ABP	-0.7417	SLC15A4	-0.257837	FXR2	0.664817	RND3	1.16858
TPR	-0.686734	STX2	-0.615729	TP53	-0.798934	ARL5A	-1.11401
UCHL5	-0.630025	POLE	0.643225	LSMD1	0.722676	PRPF40A	-0.816224
GLRX2	0.163043	ANKLE2	-0.30715	TRAPPC1	0.549566	FAP	-0.312924

ASPM	-1.89258	GOLGA3	-0.448847	VAMP2	0.734593	GALNT3	-0.282796
ZNF281	-1.03198	SAP18	0.729545	AURKB	0.562554	STK39	-0.444961
KIF14	-2.27431	MRP63	0.354976	RPL26	0.944162	SPC25	-0.714728
TMEM9	0.2224	NUPL1	-0.900914	STX8	0.203383	METTL5	-0.416615
PHLDA3	0.789825	RPL21	0.728671	SCO1	0.0310146	TLK1	-1.30029
CSRP1	0.391952	GTF3A	0.157471	ELAC2	0.175328	SP3	-1.18394
UBE2T	0.351816	POLR1D	0.874504	PMP22	-0.0703145	OLA1	-0.0677938
ADIPOR1,CYB5R1	0.441449	POMP	0.468168	TRIM16	0.650101	WIPF1	-1.43238
PPP1R15B	-0.60299	RFC3	-0.646192	NCOR1	-1.31254	CHN1	-0.622965
PIK3C2B	-1.71952	EXOSC8	0.632663	CENPV	0.624517	ATF2	-0.539922
RBBP5	-1.02976	UFM1	0.155649	COPS3	0.305328	ATP5G3	0.200418
NUCKS1	-1.7407	RGCC	-0.95359	PEMT	0.285832	LOC375295	-1.2543
SLC41A1	0.535872	DNAJC15	-0.0495639	SREBF1	-1.12502	NFE2L2	-0.131676
EIF2D	0.200514	GTF2F2	0.35014	FLII	-0.0680053	PRKRA	-0.0779629
SLC30A1	-0.366795	NUDT15	-0.5459	SHMT1	-0.125791	NCKAP1	-1.5533
NEK2	-0.62343	ITM2B	-0.442828	B9D1	-0.521842	TFP1	-0.59327
LPGAT1	-1.90716	RB1	-1.6659	ALDH3A1	0.326804	ORMDL1	0.571772
INTS7	-0.145939	FNDC3A	-1.68623	USP22	-0.652661	HIBCH	-0.250723
RPL21P28	1.13668	DLEU1	0.421101	TMEM11	0.856751	STAT1	-0.724874
TMEM206	0.908785	RNASEH2B	0.126494	IFT20	0.730551	GTF3C3	-0.16373
BATF3	1.53405	CKAP2	-1.20134	POLDIP2	0.379211	SF3B1	-0.84489
PTPN14	-1.69334	SUGT1	-0.00367503	PIGS	-0.3818	HSPD1	-0.0884894
EPRS	-0.140664	KLF5	-0.232688	SPAG5	-0.415214	CLK1	0.856079
BPNT1	0.128403	UCHL3	0.496722	KIAA0100	-0.77484	PPIL3	0.464223
RAB3GAP2	-0.989532	LMO7	-0.67648	SDF2	0.891114	ORC2	-0.884258
AIDA	-0.609384	CLN5	-0.085181	NARR,RAB34	0.377731	TRAK2	-0.621535
TP53BP2	-0.106114	NDFIP2	-0.884161	TLCD1	0.158166	TMEM237	-0.334985
NVL	0.079955	SLITRK5	-1.66294	FLOT2	0.186113	SUMO1	-0.0938706
WDR26	-0.420271	GPC5	-1.59827	NUFIP2	-0.808116	WDR12	0.192471
LBR	-1.79655	DNAJC3	0.296571	GIT1	0.147945	GCSHP3,NDUFS1	-0.308096
ENAH	-1.40012	MBNL2	-1.20315	BLMH	0.0433309	IDH1	-0.0596498
PYCR2	0.611406	RAP2A	-1.49568	COPRS	1.11578	LANCL1	-2.16532
ACBD3	-0.585884	IPO5	-0.185412	UTP6	0.168676	FN1	-1.38815
LIN9	-1.09959	FARP1	-0.913724	NLE1	0.208584	AAMP	0.663599
PARP1	-0.523081	UBAC2	0.0760799	MYO19	0.246684	TMBIM1	1.51688

CDC42BPA	-1.01263	TM9SF2	-0.72573	ACACA	-1.11363	RNF25	1.1559
JMJD4	0.433377	TPP2	-0.740495	DDX52	-0.450434	NHEJ1	-0.0509859
C1orf35	0.345866	BIVM,BIVM- ERCC5,ERCC5	-0.500719	PCGF2	0.559819	CNPPD1	0.788899
MRPL55	0.977215	COL4A2	-0.595334	PIP4K2B	-0.404822	ABCB6	0.460891
TRIM11	1.28803	CARKD	0.802327	RPL23	0.648791	ATG9A	-0.382309
NUP133	-0.574794	ING1	0.485571	MED1	-1.09665	TUBA4A	0.807193
TAF5L	-0.44645	ARHGEF7	0.282189	MIEN1	0.621469	DNPEP	0.617066
C1orf198	-1.54026	CUL4A	-0.846854	ORMDL3	0.282876	CHPF	1.13666
EGLN1	-0.803453	LAMP1	0.12057	MED24	-0.155699	FARSB	-0.167433
TARBP1	-0.663304	TMC03	-0.304032	TOP2A	-1.8684	AP1S3	-1.88789
IRF2BP2	0.250409	TFDP1	-0.43009	TNS4	-0.738628	WDFY1	-1.23868
TOMM20	-0.539871	CDC16	0.0867448	SMARCE1	0.0682525	SERPINE2	0.887659
B3GALNT2	-0.685214	UPF3A	-0.192703	KRT10	0.383792	CUL3	-1.02851
NID1	-0.41567	CHAMP1	-0.987108	KRT17	0.230607	IRS1	-0.639382
HEATR1	-0.954865	PSPC1	-0.252898	JUP	1.0505	COL4A4	-2.7438
FH	0.194119	SKA3	0.0873949	LEPREL4	0.301367	PID1	0.454446
CHML,OPN3	-1.49302	ZDHC20	-1.69801	NT5C3L	0.62934	DNER	-0.0501732
CEP170	-1.56101	EFHA1	-0.791747	ACLY	-0.811887	TRIP12	-0.681917
ADSS	-0.742657	PARP4	-0.583241	DNAJC7	0.488918	NCL	-0.697339
HNRNPU	-0.629945	SLC7A1	-0.557883	KAT2A	0.293962	PDE6D	0.505562
SMYD3	-0.502727	HMGB1	-0.445118	RAB5C	0.435259	USP40	-0.197495
TFB2M	0.333436	HSPH1	-0.237915	STAT5B	-1.03826	HJURP	-0.0116451
AHCTF1	-0.907776	N4BP2L2	-0.47835	STAT3	-0.555746	ILKAP	0.589172
ZNF496	0.0682467	SPG20	-0.110933	PTRF	-0.0118454	NDUFA10	0.148829
SH3BP5L	0.180835	ALG5	0.806224	PSMC3IP	0.922419	MYEOV2	0.639526
ZNF692	0.726247	FAM48A	-0.673274	PLEKHH3	0.101759	HDLBP	-0.117779
ZMYND11	-1.25433	TSC22D1	0.631111	COA3	0.277094	STK25	0.0475159
GTPBP4	-0.020674	TPT1	0.473075	BECN1	-0.0462482	THAP4	0.573238
PFKP	0.48165	ESD	-0.154885	AARSD1,PTGES3 L,PTGES3L- AARSD1	0.554753	DTYMK	0.260139
AKR1C3	0.810101	SUCLA2	-0.277746	VAT1	0.706958	SOX12	-0.13403
NET1	0.122522	MED4	-0.250233	DUSP3	0.575446	NRSN2	0.00569868
FAM208B	-0.932755	EBPL	-0.451888	TMEM101	0.753909	RBCK1	1.00666
FBXO18	-0.0739756	KPNA3	-1.32673	LSM12	-0.106264	PSMF1	0.546976
PFKFB3	-0.20073	DIAPH3	-0.610065	ATXN7L3	-0.133297	MIR1292,NOP56,SN	0.308193

						ORD86	
LOC100507127	0.113557	MZT1	-0.693097	UBTF	-0.612751	PTPRA,VPS16	0.129148
ATP5C1	0.0864842	DIS3	-0.690371	SLC25A39	0.219881	MRPS26	0.552195
CDC123	0.223016	TBC1D4	-0.878229	CCDC43	-0.0818485	ITPA	0.821499
CAMK1D,LOC28307 0	-0.794786	COMMD6	-0.319897	EFTUD2	-0.152091	CDC25B	0.0284658
OPTN	1.0558	KCTD12	-1.55198	KIF18B	-0.489886	AP5S1,MAVS	-0.196605
MCM10	-0.486545	FBXL3	-1.39913	PLCD3	-0.220761	PRNP	0.470996
PRPF18	0.232244	MYCBP2	-0.811396	CDC27	-1.72337	PCNA-AS1	-0.589296
HSPA14	0.447345	ABCC4	-0.5672	MRPL10	0.673578	BTBD3	-2.04966
VIM	0.509132	UGGT2	-0.720683	CBX1	-0.349819	SNRPB2	0.424007
STAM	-0.0555427	STK24	0.143968	HOXB7	0.59634	DSTN	-0.752759
PLXDC2	-1.39207	DOCK9	-1.13032	SNF8	0.387833	SEC23B	0.389882
MLLT10	-0.64922	GPR183	-1.36782	PHB	0.666085	LINC00493	0.595814
BMI1,COMMD3,COM MD3-BMI1	-0.0814376	TEX30	0.34317	SPOP	-0.136285	DTD1	0.318225
MASTL	-0.335697	KDELC1	0.0806314	SLC35B1	1.11931	NAA20	0.855578
RAB18	-0.522561	EFNB2	-0.654289	PPP1R9B 9	0.00050960	XRN2	-0.49368
WAC	-0.577242	ARGLU1	-0.551225	COL1A1	-1.10312	NXT1	0.712214
CREM	0.648543	IRS2	0.562031	MRPL27	0.860689	ENTPD6	0.178914
CCNY	-0.15435	COL4A1	-1.0613	LRRC59	0.402934	PYGB	0.404809
BMS1	-0.222207	RAB20	0.366524	ANKRD40	-0.603382	HM13	0.867969
ZNF22	-0.980001	CARS2	0.431017	TOB1	-0.189157	ID1	0.518128
ANXA8L2	-1.03337	ANKRD10,ANKRD10-IT1	0.841764	SPAG9	-0.401948	TPX2	-0.818674
NCOA4	-0.577507	TUBGCP3	-0.902222	COX11	-0.340271	TM9SF4	-0.164824
CISD1	-0.124592	PCID2	0.174089	MIR3614,TRIM25	0.742129	MIR1825,POFUT1	-0.518249
TFAM	-0.768115	GAS6	0.380231	MRPS23	0.865067	KIF3B	-0.241908
CDK1	-0.398706	RASA3	0.0820316	CUEDC1	0.29088	ASXL1	-0.324971
ADO	0.194086	PARP2	-0.0585673	VEZF1	-0.799023	MAPRE1	-0.378098
HNRNPH3	-0.401806	APEX1	0.161375	SRSF1	-0.828719	CHMP4B	0.588385
CCAR1,SNORD98	-0.650176	PNP	0.945811	SUPT4H1	0.44987	ITCH	-1.0824
DDX50	0.0535112	METTL17	0.287936	SKA2	-0.841111	DYNLRB1	0.768749
DDX21	-0.833241	TOX4	0.342404	PTRH2	1.0854	PROCR	0.920862
KIAA1279	-0.161168	ABHD4	0.00039199 2	LOC645638	0.70694	ERGIC3	0.531607
SRGN	1.41642	OXA1L	0.23756	CYB561	0.874542	ROMO1	0.952643

VPS26A	-0.202018	MRPL52	0.68259	CCDC47	-0.0355551	PHF20	-0.794534
SUPV3L1	0.620631	LRP10	-0.10461	FTSJ3	0.175409	EPB41L1	-0.513335
HK1	0.573509	C14orf119	0.213493	SMARCD2	0.358494	AAR2	0.265791
EIF4EBP2	-0.888401	BCL2L2,BCL2L2- PABPN1,PABPN1	-0.0274295	DDX5	-0.134564	DLGAP4	0.445069
SGPL1	-0.524503	NGDN	0.736905	GNA13	-1.37797	MYL9	-0.160391
CHST3	-0.348518	DHRS4	0.482449	PSMD12	-0.0970081	C20orf24,TGIF2,TGI F2-C20ORF24	1.04387
ANAPC16	-0.0387934	DHRS4L2	0.192441	FAM104A	0.326276	RPN2	0.150984
DDIT4	- 0.00141637	DCAF11	0.0169039	CDC42EP4	0.0325742	MANBAL_SRC	0.433621
MCU	-1.0368	PSME1	0.698456	ATP5H	0.695934	CTNBL1	0.966317
SEC24C	-0.0878247	IRF9,RNF31	0.403823	NT5C	0.500979	RPRD1B	-0.72295
CHCHD1	0.38552	GMPR2	0.141394	HN1	0.412732	FAM83D	-0.778105
VCL	-1.04495	NOP9	-1.12111	SUMO2	-0.163876	TOP1	-0.0987922
ADK	-0.186164	G2E3,SCFD1	-0.34803	SLC25A19	0.546911	PLCG1	-0.232348
VDAC2	0.52835	SRP54	0.355565	GRB2	0.0527303	SRSF6	-0.170087
RPS24	0.86836	FAM177A1	0.109996	GALK1	0.487339	IFT52	0.26425
ZMIZ1	-0.645177	KIAA0391	0.0782493	H3F3B	0.0480487	MYBL2	0.363056
PPIF	1.53012	PSMA6	0.376507	UNC13D	0.294574	WISP2	-0.909136
FAM213A	0.206783	SSTR1	-1.04376	WBP2	0.753597	YWHAB	-0.235381
GHITM	0.136082	GEMIN2	-0.129459	TRIM47	0.738651	DBNDD2,SYS1,SYS 1-DBNDD2	0.715162
FAM35A	-0.525217	PNN	-0.0471655	TRIM65	-0.309306	PIGT	0.484253
PAPSS2	-0.532444	RN7SL1	3.14973	MRPL38	0.753784	DNTTIP1	0.97286
PTEN	-0.775073	LRR1	0.318298	SRP68	0.573028	UBE2C	0.362624
STAMBPL1	0.0157044	MGAT2	0.164186	EXOC7	0.175218	CTSA	0.527151
KIF20B	-1.85088	KLHDC2	- 0.00657673	PRPSAP1	- 0.00465666	PCIF1	-0.0943496
RPP30	0.097447	ARF6	0.194437	MXRA7	0.256004	CSE1L	-0.763288
PCGF5	-0.373902	TMX1	-0.379224	JMJD6	1.05593	DDX27	0.407148
TNKS2	-1.1443	FRMD6	0.272179	MIR636,SRSF2	-0.232449	ZNFX1-AS1	2.35626
MARCH5	-0.467735	C14orf166	0.719739	TK1	0.0760196	RNF114	0.54094
KIF11	-1.67556	PSMC6	0.275661	SOCS3	-0.0585791	SNAI1	0.547965
CEP55	-0.844618	CDKN3	-0.642608	CYTH1	-0.0323805	CEBPB	1.95673
HELLS	-1.89202	MAPK1IP1L	-0.654356	USP36	0.274672	PTPN1	0.0149517
RPL13AP5	0.920343	LGALS3	0.860932	TIMP2	-0.650106	PFDN4	-0.654528

PGAM1	0.209273	KTN1	-0.834051	CANT1	0.255351	CSTF1	-0.392329
ZDHC16	0.195704	AP5M1	-0.957484	CBX4	0.839174	RTFDC1	0.453189
PI4K2A	0.16191	ACTR10	-0.0602349	EIF4A3	0.61637	RAE1	0.781714
MARVELD1	-0.433271	PSMA3	0.194119	NPTX1	-1.42693	VAPB	-0.0587313
CUTC	-0.234439	JKAMP	-0.490277	SLC38A10	-0.126155	NPEPL1,STX16,STX 16-NPEPL1	-0.0122428
SCD	-0.913057	PCNXL4	-1.17892	ACTG1	-0.343248	GNAS	0.241086
C10orf2	0.84702	MNAT1	0.0808214	C17orf70	-0.154391	TH1L	-0.0326776
LZTS2	0.306711	SLC38A6	-0.939483	NPLOC4	-0.119923	LSM14B	0.0535168
SFXN3	0.134547	HIF1A	-0.935692	OXL1	0.89778	GTPBP5	0.622798
DPCD	0.579126	MTHFD1	-0.127219	ARL16	0.597568	ADRM1	0.925873
HPS6	0.499813	CHURC1,CHURC1- FNTB,FNTB	-0.212146	P4HB	0.500109	RPS21	0.964964
PPRC1	-0.378111	MPP5	-1.33017	ARHGDI1A	0.562737	SLCO4A1	0.957265
NOLC1	-0.250704	EIF2S1	0.233101	ALYREF	0.614416	MRGBP	0.650072
GBF1	-0.769597	SLC39A9	0.0550909	MAFG	0.969765	OGFR	0.595375
WBP1L	-0.462661	SRSF5	0.150918	PYCR1	0.639663	GID8	0.0335447
PDCD11	0.233242	SMOC1	-0.666838	STRA13	0.965455	SLC17A9	0.656275
GSTO1	1.21746	SIPA1L1	-1.08794	DCXR	0.752054	ARFGAP1	0.55519
ADD3	-1.40359	C14orf169	0.0665477	DUS1L	0.414026	PPDPF	0.681116
SMC3	-0.767808	ACOT2	0.00626619	FASN	-1.54449	LIME1,ZGPAT	0.84971
MIR4680,PDCD4	-1.20318	PTGR2,ZNF410	0.637645	CSNK1D	0.187278	SLC2A4RG	0.0404428
SHOC2	-1.40042	ISCA2	-0.150386	OGFOD3	0.350853	TPD52L2	0.601653
ADRA2A	-1.53942	FCF1	-0.320901	WDR45L	0.514604	DNAJC5	-0.0129394
GRK5	0.0872056	YLPM1	-0.924175	USP14	-0.847841	PRPF6	0.120575
BAG3	0.564278	DLST	0.210915	TYMS	-0.272143	CSNK2A1	-0.27612
WDR11	-0.95437	EIF2B2	0.911313	NDC80	-0.699912	SRXN1	1.05817
PLEKHA1	-1.05304	AHSA1	0.734962	MYL12A	0.203055	FKBP1A,FKBP1A- SDCBP2,SDCBP2	0.255343
HTRA1	0.173877	SLIRP	0.51191	MYL12B	0.496135	NSFL1C	0.653878
HMX3	-1.37792	ZC3H14	-0.235182	TGIF1	0.424556	SNRPB	0.6701
BUB3	-0.361964	PSMC1	0.615445	PTPRM	-0.945404	IDH3B	0.607729
BCCIP	0.207429	CALM1	-0.403147	RAB12	0.191021	DDR1G1	1.04671
DOCK1	-1.41279	CPSF2	-0.993261	SOGA2	-0.986204	C20orf27	0.491873
GLRX3	0.610587	GOLGA5	-0.0592344	NDUFV2	0.633778	CENPB	0.397186
PPP2R2D	0.267588	UBR7	-0.280974	TWSG1	-1.35738	TMEM230	-0.478097
PWWP2B	0.98368	IF127L1	0.570667	RALBP1	-0.604864	PCNA	-0.126164

INPP5A	-0.349055	GLRX5	-0.0112804	RAB31	-1.03016	JAG1	0.347051
ZNF511	0.849786	PAPOLA	-1.27932	VAPA	-0.525864	RRBP1	0.75497
MTG1	0.225025	VRK1	0.101482	CHMP1B	-0.335874	SNORD17,SNX5	-0.189723
LARP4B	-0.277533	CCNK	-0.140642	IMPA2	-0.951467	CST3	1.08941
IDI1	-0.750415	YY1	-0.67924	TUBB6	0.208839	APMAP	0.0719825
PITRM1	0.40336	WDR25	0.433146	PSMG2	0.223675	ABHD12	0.278515
KLF6	-0.217862	PPP2R5C	-0.208171	SEH1L	-0.165751	BCL2L1	0.742526
AKR1C2	1.17161	DYNC1H1	-0.54208	SNRPD1	0.324658	PDRG1	1.2131
ASB13	0.087872	RCOR1	-1.17234	MIR4741,RBBP8	-0.126645	COMMD7	1.46211
GDI2	0.0228965	TNFAIP2	0.52966	CABLES1	-0.210219	CDK5RAP1	0.717496
NUDT5	0.473206	EIF5	0.12902	RIOK3	0.210637	SNTA1	0.386414
SEPHS1	-0.205416	MARK3	0.226416	TTC39C	-0.135883	NECAB3	0.477043
FAM107B	0.270292	TRMT61A	0.855923	DSG2	-1.18009	E2F1	0.282674
RSU1	-0.143641	APOPT1	0.511542	MAPRE2	-0.34572	EIF2S2	0.483261
PTPLA	-0.446601	KLC1	0.0190535	GALNT1	-1.54251	AHCY	0.270014
DNAJC1	0.406568	ZFYVE21	-0.130056	ELP2	-0.16362	PIGU	-0.116139
PIP4K2A	-0.534169	KIF26A	-0.316001	HAUS1	0.0774036	GSS	0.362824
ARHGAP21	-1.23056	INF2	0.386503	CTIF	-0.811181	TRPC4AP	0.0620275
ABI1	-0.328695	SIVA1	0.624347	SKA1	-0.0375696	MMP24	-0.101869
YME1L1	-0.414754	KIAA0284	-0.0841244	ME2	-0.330974	EIF6	1.00731
MKX	-0.900655	BTBD6	0.388278	SMAD4	-0.717143	UQCC	0.418673
WAC-AS1	-0.118903	MTA1	0.0909738	ZNF532	-1.04681	CPNE1,RBM12	0.0891023
KIF5B	-1.37409	CRIP2	-0.153647	SEC11C	1.37932	NFS1	-0.0622975
ITGB1	-1.0847	CRIP1	0.626437	SERPINB5	-0.268051	SCAND1	0.524907
NRP1	0.131608	C14orf80	0.512834	TIMM21	-0.0321818	LINC00657	-0.746165
PARD3	-0.274183	CCNB1IP1	1.47032	CNDP2	0.0466004	NDRG3	-0.636148
CUL2	-0.509629	OSGEP	0.661688	TSHZ1	-1.02745	DSN1	-0.191792
HNRNPF	-0.185713	TMEM55B	1.14111	CTDP1	0.351232	BLCAP	0.197765
ANXA8L1,LOC64365 0,LOC728643	-0.862934	ZNF219	-0.662511	HSBP1L1	1.19097	TTI1	0.595964
TIMM23	0.558385	HNRNPC	0.0793539	RBFA	0.10528	TGM2	0.681758
SGMS1	-1.27638	SUPT16H	-0.720622	ADNP2	-0.187694	LOC388796	1.23037
ZWINT	0.1564	CHD8	-0.533611	THOC1	0.182375	JPH2	-0.955022
CDC6	-0.904855	METTL3	0.0620357	ENOSF1	-0.396666	C20orf111	1.14144
RHOBTB1	-1.33844	DAD1	0.676126	YES1	-1.12804	SERINC3	-0.70357
HERC4	-0.849943	PRMT5	0.569574	PPP4R1	-0.479639	TOMM34	0.327476

AIFM2,SAR1A,TYSN D1	0.279504	HAUS4,MIR4707	0.203922	PIEZO2	-2.60916	SLP1	0.516277
PPA1	- 0.00406463	AJUBA	-0.281367	AFG3L2	0.0694691	SDC4	1.05431
PCBD1	-0.0274154	PSMB5	0.525262	SPIRE1	-0.430628	ACOT8	0.462203
PSAP	0.449203	ACIN1	0.28916	PTPN2	0.109832	NCOA5	-0.061329
ASCC1	-0.116112	DHRS4-AS1	0.522052	ROCK1	-1.39863	SLC35C2	0.593553
DNAJB12	0.382088	EMC9	0.315123	ABHD3	0.192938	SULF2	-1.11377
MICU1	0.00978925	PSME2	1.00072	NPC1	0.421397	STAU1	-0.155227
P4HA1	-0.782572	IPO4	-0.0886172	SS18	-0.660619	B4GALT5	-1.38897
ECD	0.135025	TM9SF1	0.437731	CDH2	-1.00403	TMEM189,TMEM18 9-UBE2V1,UBE2V1	0.00483638
DNAJC9	0.252703	CHMP4A	0.513471	ZNF24	-0.883321	ADNP	-0.936209
MRPS16	0.0643733	MDP1,NEDD8,NEDD8- MDP1	0.682397	INO80C	0.50549	DPM1	1.0082
ANXA7	0.0710421	TINF2	0.234875	RPRD1A	-0.915539	ATP9A	-1.85126
PPP3CB	-1.13333	SDR39U1	0.302735	SLC39A6	-0.696754	ZFP64	-0.226316
CAMK2G	-0.141545	HECTD1	-0.725523	TPGS2	-0.228387	AURKA	-0.64572
AP3M1	-0.63164	HEATR5A	-1.92975	ATP5A1	-0.0214445	PMEPA1	-0.219375
COMTD1	0.842576	SPTSSA	-0.726132	IER3IP1	-0.494092	CTSZ	0.402078
ZNF503	-0.570181	EAPP	0.0634595	SMAD2	-0.655916	ATP5E,SLMO2,SLM O2-ATP5E	0.677404
DLG5	-0.835966	SNX6	-0.510044	SMAD7	0.163149	PSMA7	0.400756
ZCCHC24	-0.816317	CFL2	-0.952717	DYM	-0.447168	LAMA5,MIR4758	-0.913671
LOC642361	-0.341525	BAZ1A	-0.826907	C18orf32,RPL17,R PL17- C18ORF32,SNOR D58B	0.791815	TCFL5	-0.430608
ANXA11	0.400922	NFKBIA	1.00519	ACAA2	0.569159	DIDO1	-0.954998
WAPAL	-0.691098	SEC23A	-1.53693	MBD1	0.580048	YTHDF1	-0.00700462
GLUD1	0.25188	FKBP3	0.0276264	CXXC1	0.355734	EEF1A2	-0.0447326
LOC728190	0.646088	MIS18BP1	-1.94208	MEX3C	-0.78561	GMEB2	0.0249934
ATAD1	-0.220931	RPS29	0.941601	MBD2	-0.161465	STMN3	0.64028
ACTA2	-2.13748	RPL36AL	0.949132	TXNL1	0.208534	ARFRP1	0.544757
LIPA	-0.813184	NEMF	-0.956275	NARS	-0.016574	UCKL1	0.254653
PPP1R3C	-1.64485	RN7SL2	3.78914	LMAN1	-1.14935	RGS19	0.707062
IDE	-0.978795	MAP4K5	-1.31552	KDSR	0.462367	MIR3648,MIR3687	1.67533
MYOF	-0.796306	SAV1	0.188473	VPS4B	-0.520252	CXADR	-1.41407

NOC3L	-0.628584	PYGL	-0.290132	DSEL	-1.61531	USP16	-0.175192
PDLIM1	0.0778815	ERO1L	-0.480187	TMX3	-1.33869	SOD1	0.548815
ALDH18A1	-0.476728	GNPNAT1	-0.475994	CYB5A	0.182802	EVA1C	0.392228
TCTN3	0.099393	FERMT2	-1.11234	ZADH2	-0.619015	IFNGR2	0.214812
TM9SF3	-1.30187	CNIH	-0.110114	PQLC1	0.631477	SON	-0.83647
RRP12	0.365869	GMFB	-2.215	TXNL4A	0.418003	MRPS6,SLC5A3	0.59955
EXOSC1	1.01244	WDHD1	-1.26066	TPGS1	1.11719	FAM165B	0.00640736
MMS19	-0.15847	DLGAP5	-1.31258	CDC34	1.01535	CBR1	0.641033
AVP1	0.547025	TIMM9	0.435824	BSG	0.4912	CHAF1B	-0.468071
HPS1	0.470237	GPR135,L3HYDPH	-0.0654785	HCN2	-0.520358	TTC3	-1.19326
GOT1	0.875716	DHRS7	1.0471	FSTL3	0.421664	DYRK1A	-0.553429
SLC25A28	1.36388	HIF1A-AS2	-2.41591	C19orf21	0.236456	ETS2	-0.336811
DNMBP	-0.0926803	PPP2R5E	-1.10939	PTBP1	-0.250918	WRB	-0.77701
ERLIN1	-0.133934	MAX	0.372814	CFD	0.033595	BACE2	-0.396682
CWF19L1	0.391552	ATP6V1D	0.946503	WDR18	0.299713	NDUFV3	0.37966
BLOC1S2	0.0979956	PLEK2	1.63673	CNN2	-0.243598	RRP1B	-0.909952
NDUFB8	0.674877	VTI1B	0.526487	ABCA7,HMHA1	0.262139	PDXK	-0.298367
MRPL43	0.293018	RDH11	0.0260083	GPX4	0.512423	RRP1	0.79171
NPM3	0.646193	ZFP36L1	0.500639	ATP5D	0.810537	PWP2	0.0946368
MGEA5	-0.343236	ACTN1	-0.200712	MIDN	-0.024913	C21orf33	0.382547
LDB1	-0.318512	ERH	0.077297	CIRBP	0.379556	PFKL	-0.301369
CUEDC2	0.580761	COX16,SYNJ2BP,SYNJ2 BP-COX16	-0.110361	C19orf24	1.17395	FAM207A	0.560508
ACTR1A	0.0796851	MED6	0.54843	MUM1	0.0707876	COL18A1	-0.338914
ARL3	-1.10792	NUMB	-0.302696	NDUFS7	0.839628	COL6A1	0.29396
NT5C2	0.0475654	PNMA1	0.0405312	DAZAP1	0.261092	COL6A2	0.778629
MIR1307,USMG5	0.100221	MIR4709,NPC2	1.09913	RPS15	1.15398	YBEY	0.805751
SH3PXD2A	-1.14447	KIAA0317	-0.539251	ADAT3,SCAMP4	0.611812	PRMT2	-0.165289
ITPRIP	0.762972	ACYP1	0.663932	CSNK1G2	0.0646303	HSPA13	-0.808043
XPNPEP1	0.238811	NEK9	-0.164925	DOT1L	-0.340547	BTG3	0.518275
SMNDC1	-0.337132	TMED10	-0.365829	SF3A2	0.589589	MRPL39	0.250945
BBIP1	-0.0326689	C14orf1	-0.0715062	OAZ1	0.868994	ATP5J	0.498369
ZDHHC6	0.142914	IRF2BPL	0.174083	GADD45B	1.39724	APP	-0.351166
ABLIM1	-1.46191	SNW1	0.229299	THOP1	0.251047	ADAMTS1	-0.563489
PDZD8	-1.35862	DIO2	-2.0035	GNA11	- 0.00947231	RWDD2B	0.471075

FAM204A	0.0915428	SEL1L	-0.464458	NCLN	0.650393	CCT8	0.282658
CACUL1	-0.439351	SMEK1	-0.450125	NFIC	-1.02094	MIS18A,URB1	-0.353164
EIF3A	-0.856699	FBLN5	-0.346789	FZR1	-0.168608	C21orf59	0.447784
SFXN4	0.438128	NDUFB1	0.617993	HMG20B	0.259628	GCFC1	-0.810805
PRDX3	-0.646315	LGMN	0.489934	GIPC3	-0.688655	GART	-0.27104
RGS10	0.24579	ITPK1	0.285068	MRPL54	1.09357	DONSON	-0.251809
TIAL1	0.363841	C14orf142	0.175634	PIAS4	0.471945	ATP50	0.590344
MCMBP	-0.383941	DDX24	0.0596146	CCDC94	0.76719	RCAN1	-0.07057
NSMCE4A	0.176569	IFI27L2	0.769368	CHAF1A	0.0736189	PIGP	0.0379833
OAT	-0.124734	SETD3	-0.0245759	HDGFRP2	0.0489936	DSCR3	0.228952
FAM53B,METTL10	-0.620882	CCDC85C	-0.438313	FEM1A	0.650724	PSMG1	0.242094
CTBP2	-0.179018	WARS	0.922529	UHRF1	-0.653043	HMG1	-0.318576
UROS	0.0941697	BEGAIN	0.0699304	SAFB	0.272064	WDR4	-0.263224
DHX32	0.156377	HSP90AA1	-0.268938	RPL36	0.862663	CBS	0.479495
ADAM12	-1.1909	CINP	0.450372	CLPP	0.858603	U2AF1	0.239196
MKI67	-1.94176	CDC42BPB	-0.84473	ALKBH7	0.994315	SIK1	-1.14148
BNIP3	0.244064	CKB	0.259823	TRIP10	0.528463	CSTB	0.514866
TUBGCP2	0.349327	BAG5	-0.22203	ARHGEF18	0.805582	UBE2G2	0.0100089
FUOM	0.835094	C14orf2	0.558453	ZNF358	0.0525438	SUMO3	-0.410368
ECHS1	0.374151	AKT1	0.0786117	MCOLN1	0.793957	PTTG1IP	0.243936
RIC8A	0.336767	AHNAK2	-0.60581	PNPLA6	-0.141377	POFUT2	0.384393
PSMD13	0.584148	CDC44	-0.0285793	PET100	1.03689	SLC19A1	0.317271
IFITM2	-0.15711	JAG2	-0.379354	TRAPPC5	0.901173	LSS	-0.375474
IFITM1	-1.07009	CYFIP1	-0.484335	MAP2K7	0.344669	MCM3AP	-0.517663
PTDSS2	0.672959	SNRPN,SNURF	0.308455	RPS28	0.74172	BCL2L13	0.116388
EPS8L2	-0.249448	KLF13	-0.899609	RAB11B	0.735102	PEX26	-0.405524
TALDO1	0.734845	ARHGAP11A	-1.41314	HNRNPM	-0.240909	MRPL40	0.541895
RPLP2	1.06047	GREM1	-0.437338	UBL5	0.986921	CDC45	0.288228
PNPLA2	1.08549	EMC4	0.593238	PIN1	0.531311	COMT,MIR4761	0.951252
CD151	0.131437	FAM98B	-1.09561	P2RY11,PPAN,PP AN-P2RY11	0.531003	DGCR8,MIR1306,MI R3618	-0.125352
TSPAN4	0.735173	THBS1	-1.12145	MRPL4	0.527799	RANBP1	0.587435
AP2A2	-0.089957	EIF2AK4	-0.809578	SLC44A2	-0.270591	ZDHC8	0.18339
MRPL23	1.0076	BUB1B,PAK6	-1.10522	ILF3	-0.566833	MED15	0.262772
CD81	0.449497	C15orf23	-0.206508	QTRT1	0.535819	CRKL	-0.0890296
TSSC4	1.32977	IVD	-0.2217	DNM2	-0.257037	LZTR1	0.00812537

RRM1	-0.332812	CHST14	0.358003	CARM1	-0.318585	UBE2L3	0.280126
SMPD1	0.703451	CASC5	-1.10755	C19orf52	0.470337	SDF2L1	1.8474
FXC1	0.0840054	VPS18	0.779757	SMARCA4	-0.442673	PPIL2	-0.485418
ILK	0.400927	CHP1	-0.511603	LDLR	-0.338593	BCR	-0.279256
EIF3F	0.698634	OIP5-AS1	-0.799652	LPPR2	0.0956452	SMARCB1	0.247413
TUB	-1.73345	NUSAP1	-1.05962	PRKCSH	0.327695	MIF	0.97444
RPL27A	0.764355	RTF1	-0.561925	ASNA1	0.580198	SNRPD3	0.469746
AKIP1	0.0671802	TYRO3	0.249946	JUNB	1.12083	GGT1	0.978152
IPO7	-1.22052	SNAP23	-0.587595	RNASEH2A	0.759015	POM121L10P	0.47776
WEE1	-0.960703	HAUS2	-0.192133	GCDH	0.35763	CRYBB2P1	1.10794
SWAP70	-0.546619	TUBGCP4	-0.951976	CALR	0.663074	SRRD	0.849037
ADM	1.74655	PDIA3	0.618225	RAD23A	0.151493	CCDC117	-0.930347
CTR9	-0.398849	HYPK,SERF2,SERF2-C15ORF63	0.722487	NFIX	-0.801117	EWSR1	0.249264
USP47	-0.291203	WDR76	-0.993561	NACC1	-0.446229	GAS2L1	0.146961
MICAL2	0.481823	CASC4	-1.12246	IER2	1.33558	UQCR10	0.434059
PARVA	-0.717682	CTDSP2	-1.60952	MRI1	-0.325846	MTFP1	1.1492
TEAD1	-2.07162	EIF3J	-0.223392	C19orf53	0.695963	OSBP2	-0.296174
FAR1	-1.06303	B2M	0.614028	ZSWIM4	0.763004	TUG1	-0.83535
C11orf58	0.00305847	SORD	0.00176412	CC2D1A	0.33107	SMTN	0.0387128
NUCB2	0.292994	BLOC1S6	-0.49675	DCAF15	0.342782	RNF185	0.501404
GTF2H1	0.338288	DUT	-0.510493	CD97	0.971678	DRG1	0.614762
LDHA	-0.422512	EID1	-0.559701	PKN1	0.489924	YWHAH	-0.0153354
NAV2	-1.55665	DTWD1	-0.688023	MIR639,TECR	0.470222	FBXO7	0.164997
HTATIP2	0.024029	USP8	-0.687849	SYDE1	0.499885	TIMP3	-0.279613
PRMT3	-0.413215	TMOD3	-1.10305	TPM4	-0.48366	HMOX1	2.33951
ELP4	-0.387187	MAPK6	-0.333404	RAB8A	0.100652	MCM5	-0.578853
RCN1	0.0470402	TCF12	-1.22792	FAM32A	0.62317	MPST	0.253208
EIF3M	0.213924	GCOM1,MYZAP,POLR2M	-0.289095	AP1M1	-0.113818	CDC42EP1	0.65019
QSER1	-2.13733	CCNB2	-0.33593	SIN3B	0.160995	PDXP	0.7649
DEPDC7	0.045798	TPM1	-0.486591	MYO9B	-0.346803	LGALS1	0.757019
LINC00294,TCP11L1	-0.715639	LACTB	0.186634	USE1	0.768403	NOL12	0.440773
CAPRIN1	-1.02534	SNX1	-0.0610554	BABAM1	0.258698	TRIOBP	-0.112047
NAT10	-0.288828	PTPLAD1	-0.203847	MRPL34	0.529986	H1FO	0.280911
CAT	-0.698997	RAB11A	0.108223	DDA1	0.865062	GCAT	0.490243

PDHX	-0.383073	MAP2K1	0.264672	GTPBP3	0.28596	EIF3L	0.138902
CD44	0.749515	ZWILCH	-0.777958	FAM125A,LOC100 507535	0.33886	MICALL1	0.279612
FJX1	0.656246	SMAD6	-0.0397808	PGLS	1.06481	POLR2F	0.949006
TRIM44	-0.598471	PIAS1	-0.190021	GLT25D1	-0.138934	KDELR3	-0.367416
LDLRAD3	-0.517065	FEM1B	-0.78547	MAP1S	0.774722	TOMM22	0.244106
PRR5L	-0.289149	KIF23	-0.723584	RPL18A	0.942974	GTPBP1	0.243304
API5	-0.825848	RPLP1	1.09035	CCDC124	0.688588	SMCR7L	0.0418539
TTC17	0.571559	ARIH1	-0.476933	PIK3R2	-0.567499	ATF4	1.63743
HSD17B12	-0.617576	CD276	-0.283579	IFI30	1.51457	ADSL	0.20051
ALKBH3	0.656738	LOXL1	0.348379	MPV17L2	1.15364	SGSM3	-0.203922
EXT2	-0.28568	CLK3	0.877987	SSBP4	0.288402	RBX1	0.539928
CD82	-0.633606	CSK	0.598819	KXD1	0.753241	L3MBTL2	-0.146972
SLC35C1	0.579546	MPI	-0.215856	UBA52	0.847741	ZC3H7B	-0.452768
DGKZ	0.371053	C15orf39	0.477863	C19orf60	0.900611	ACO2	0.0691658
ATG13	0.467914	COMMD4	0.772785	KLHL26	-0.181588	XRCC6	-0.0301674
C11orf49	-0.371231	UBE2Q2	-0.896177	CRTC1	-0.797628	SREBF2	-0.132132
DDB2	-0.18291	FBXO22	0.0939862	UPF1	0.359792	FAM109B	-0.098256
MADD	-0.187859	RCN2	-0.496071	DDX49	0.769705	C22orf32	0.480864
SLC39A13	0.885216	HMG20A	-0.956372	ARMC6	0.415828	TSPO	0.793597
PTPMT1	0.378646	IDH3A	- 0.00528905	RFXANK	0.803812	SAMM50	0.115843
NDUFS3	0.882944	IREB2	-1.4456	MAU2	0.111481	PARVB	-0.0262037
PTPRJ	-1.73415	PSMA4	0.313057	GATAD2A	-0.0688068	NUP50	-0.463318
CLP1	0.296146	MORF4L1	-0.519065	NDUFA13	0.93097	FBLN1	-0.0868764
ZDHHC5	0.398279	TMED3	0.671945	RPSAP58	0.554694	ATXN10	-0.41877
CTNND1,TMX2,TMX 2-CTNND1	0.195102	ZFAND6	-0.654631	POP4	0.683558	TTC38	-0.356267
C11orf31	0.789724	FAH	0.535933	CCNE1	-0.0529999	GTSE1	-0.815293
CNTF,ZFP91,ZFP91- CNTF	-0.672745	MESDC1	0.655663	URI1	-0.139932	TRMU	0.728017
CCDC86	0.748063	FAM103A1	0.716681	PDCD5	0.426337	CRELD2	1.53821
TMEM109	-0.235773	PDE8A	-0.18891	NUDT19	-0.0555278	PIM3	0.778807
TMEM132A	0.589947	MRPS11	0.525036	CEBPG	1.13151	TRABD	0.419847
TMEM138	0.300196	AEN	0.687485	CHST8	-0.909462	SELO	0.593963
SDHAF2	0.665606	FANCI	-0.373002	KCTD15	0.0186727	NCAPH2	0.450553
FEN1	0.365629	NGRN	0.690908	LSM14A	-0.762112	CECR5	0.291595

FADS2	-0.869986	IQGAP1	-1.27324	GPI	0.0399746	ATP6V1E1	0.997765
INCENP	-1.22306	CRTC3	-1.45882	PDCD2L	0.58259	BID	0.758443
METTL12,SNORA57	-3.44476	FURIN	-0.363665	UBA2	-0.480045	DGCR11,DGCR2	-0.488071
C11orf83	0.775915	UNC45A	0.601682	GRAMD1A	0.270108	SLC25A1	-0.0902674
TTC9C	0.632469	RCCD1	-0.382688	FXD5	1.31592	HIRA	-0.389952
POLR2G	0.578971	SLCO3A1	-1.40544	USF2	0.489636	C22orf39	-0.0651851
TMEM179B	0.0230904	LOC100507217	0.0657333	TMEM147	0.649266	UFD1L	0.943827
SLC3A2	1.20603	MCTP2	-1.4629	HAUS5	-0.105412	C22orf29,GNB1L	-0.0569372
RTN3	-0.245803	NR2F2	-0.657458	COX6B1	0.982572	TXNRD2	0.834471
C11orf84	0.906758	IGF1R	-1.46125	PSENN	1.20965	TRMT2A	0.495761
MARK2	-0.134446	MEF2A	-0.645917	WDR62	0.306779	DGCR6L	0.85556
NAA40	-0.27388	NIPA2	-0.328394	TBCB	0.522456	PI4KA	-0.239365
COX8A	0.665706	UBE3A	-0.963109	CAPNS1	0	THAP7	0.484797
OTUB1	0.520512	HERC2	-0.407348	ZNF146	-0.906793	YDJC	0.721305
STIP1	0.351463	TJP1	-1.09789	C19orf33	1.21463	MAPK1	-0.697177
NUDT22	0.799317	AVEN	0.471957	PSMD8	0.874789	PRAME	-0.182929
VEGFB	0.697545	EMC7	0.684509	EIF3K	0.762001	CHCHD10	0.737771
FKBP2	1.07753	KATNBL1	-1.00833	ACTN4	-0.698919	DDT	0.518088
PLCB3	-0.455675	NOP10	0.850569	NFKBIB	1.81989	GSTT1	0.276195
GPR137	0.963311	LPCAT4	0.44302	MRPS12	0.797824	GUCD1	0.349259
ESRRA	0.96844	ACTC1	-2.98511	PAK4	-0.0870407	TFIP11	0.561068
PRDX5	1.20333	AQR	-0.800462	SAMD4B	-0.108453	TPST2	0.073063
RPS6KA4	0.184383	ZNF770	-1.53483	MED29	0.24991	MN1	-0.453275
ARL2,ARL2-SNX15,SNX15	0.440395	GPR176	0.501239	SUPT5H	0.267187	PITPNB	-0.374995
SAC3D1	0.457886	SRP14	0.25036	TIMM50	0.353293	CHEK2	-0.353508
ZFPL1	0.621716	FAM82A2	0.444678	PSMC4	0.903325	XBP1	1.22727
VP55	-0.18214	DNAJC17	0.55427	PLD3	0.439796	AP1B1	0.0443658
MRPL49	0.602613	INO80	0.468028	SHKBP1	0.273312	THOC5	0.281175
CAPN1	0.227546	OIP5	-0.49391	LTBP4	0.43396	NIPSNAP1	-0.403637
POLA2	0.0961817	EHD4	-0.213891	SNRPA	0.498325	ASCC2	0.333475
CDC42EP2	1.52032	VPS39	-0.200977	EGLN2,MIA,MIA-RAB4B,RAB4B,RA B4B-EGLN2	0.73174	SF3A1	0.0722453
DPF2	0.840131	TMEM87A	0.166857	AXL	-0.217781	PES1	0.454417
MORC2	-0.0685288	GNL1	0.499312	FAM199X	-1.62287	DSE	-0.758612
SELM	0.975093	PPP1R10	-	PRPS1	-0.158057	RWDD1	-0.198684

			0.00196113				
PATZ1	0.140175	DHX16	0.186748	COL4A5	-1.94989	DCBLD1	-1.26672
PISD	0.600259	PPP1R18	0.993165	PLS3	-1.06573	NUS1	-0.562169
C22orf28	0.202126	MDC1,NRM	-0.352438	IL13RA1	-0.476687	ASF1A	-0.18333
MYH9	-0.617566	FLOT1	0.152819	PGRMC1	- 0.00836368	GJA1	-1.04639
TXN2	0.539878	IER3	2.99787	SLC25A43	-0.738557	TPD52L1	-0.0124818
FOXRED2	-0.708728	HLA-C	0.890882	SLC25A5	0.171978	CENPW	0.670304
EIF3D	0.748048	HLA-B	1.37352	UBE2A	0.202126	RPS12	0.884818
CARD10	0.180328	ATP6V1G2,ATP6V1G2- DDX39B,DDX39B	0.28405	NDUFA1	0.781525	EYA4	-1.582
ANKRD54,MIR658	0.48878	BAG6	0.378455	STAG2	-1.71324	TBPL1	0.127444
TMEM184B	0.00657643	DDAH2	0.277225	OCRL	-0.357423	HEBP2	0.0397315
CSNK1E,LOC100996 460	0.55126	CLIC1	1.00544	UTP14A	0.676627	ABRACL	1.07622
DDX17	-0.965463	VARS	-0.0179167	MST4	-0.990334	VTA1	-0.742122
JOSD1	0.324895	LSM2	0.36959	PHF6	-1.65754	AIG1	0.144368
SUN2	-1.12303	NEU1	1.81912	HPRT1	-0.41875	LTV1	0.0329592
CBX6	-0.542358	EHMT2	-0.208162	FAM127A	0.296249	RAB32	0.579977
RPL3	0.451062	RDBP	0.712774	FHL1	-0.535226	STXBP5	-2.21154
RPS19BP1	1.11999	DOM3Z	0.731746	HTATSFP1	-0.491264	TAB2	-0.700021
MKL1	-0.705409	ATF6B	-0.38368	FMR1	-1.31104	GINM1	-0.0513291
SLC25A17	0.293947	AGPAT1	0.355388	MTMR1	-0.987146	PCMT1	0.150351
ST13	0.0931466	PBX2	0.152798	HMGB3	-0.323909	LOC100652739	-1.58741
RANGAP1	0.165811	TAP2	0.535856	VMA21	-0.668153	MTHFD1L	-0.283126
TOB2	0.0542794	RXRB	0.00522124	MAGEA2B,MAGE A6	-0.0982175	AKAP12	-0.913524
PHF5A	0.770372	VPS52	0.155617	NSDHL	0.4717	C6orf211	-0.766485
POLR3H	0.212165	WDR46	0.386985	BGN	-0.21513	SNX9	0.0685538
PMM1	0.893819	TAPBP,ZBTB22	0.13496	SLC6A8	0.85764	SYNJ2	0.765025
DESI1	0.3554	DAXX	0.453413	ABCD1	-0.0176438	TMEM181	-0.822532
NHP2L1	0.535745	CUTA	0.766321	SSR4	1.25553	WTAP	0.0742284
CENPM	0.267975	BAK1	1.22428	EMD	0.342802	ACAT2	0.0526122
NDUFA6	0.8348	MNF1	0.223746	RPL10	0.65971	MRPL18	0.566188
RRP7A,RRP7B	0.570438	LEMD2	0.619255	SNORA70	-0.0490429	IGF2R	-0.870553
POLDIP3	0.385566	NUDT3,RPS10,RPS10- NUDT3	0.915668	ATP6AP1	0.50915	SLC22A3	-0.897385

A4GALT,CYB5R3	0.0235391	C6orf106	0.194996	GDI1	0.844851	QKI	-1.81056
ARFGAP3	0.0860395	TAF11	-0.106815	FAM50A	1.13774	LINC00602	-2.53239
PAC SIN2	-0.0165949	SRPK1	-0.405007	IKBKG	0.896753	FGFR1OP	-0.026009
MCAT	0.623343	STK38	-0.875366	DKC1	- 0.00637929	TBP	0.103187
TTL12	-0.0995334	PPIL1	-0.0162442	F8A1	1.02054	GMDS	0.274761
KIAA1644	-0.565875	MTCH1	-0.298436	FUNDC2	0.439473	SERPINB6	0.547165
LDOC1L	-1.06817	CCDC167	0.6094	BRCC3	-1.06735	TUBB2A	0.896486
KIAA0930	0.0744235	GLO1	-0.772587	VBP1	-0.541469	PXDC1	0.76771
WNT7B	0.687427	OARD1	0.38494	FIGF,PIR,PIR- FIGF	0.213905	ECI2	0.397948
CERK	-0.16597	MED20	-0.673246	AP1S2	-0.837448	RPP40	0.419481
ALG12	0.31606	CCND3	-0.418906	RBBP7	-0.105052	LYRM4	0.179077
MAPK12	0.249181	MRPS10	-0.0453309	SH3KBP1	0.266431	SSR1	0.10004
PLXNB2	-0.765834	TBCC	0.975116	EIF1AX	-0.26741	BLOC1S5,BLOC1S5 - TXNDC5,EEF1E1,E EF1E1- MUTED,TXNDC5	-0.142208
SBF1	-0.142036	MEA1	1.0703	RPS6KA3	-1.1131	TFAP2A	-1.02816
LMF2	0.514769	MRPL2	1.03292	ACOT9	0.416381	TBC1D7	0.095033
SCO2,TYMP	0.934258	C6orf108	0.257568	APOO	0.201882	RANBP9	-0.186362
TRNT1	-0.362436	YIPF3	0.660739	DMD	-0.885787	CCDC90A	-0.0142661
ITPR1	-2.28678	XPO5	-1.3997	TMEM47	-2.06238	NUP153	-0.97072
BHLHE40	0.505164	GTPBP2	0.746877	DYNLT3	-1.45641	KIF13A	-0.949766
ARL8B	-0.400732	MRPS18A	0.958737	BCOR	-1.0481	TPMT	-0.101986
THUMPD3	-0.13858	MRPL14	1.07887	MED14	-1.16179	DEK	-1.17619
SETD5	-0.915665	MIR4647,SLC35B2	0.15522	FUNDC1	0.307807	TDP2	0.615009
MTMR14	0.779052	TNFRSF21	-0.256765	NDUFB11	0.809453	C6orf62	-0.560439
BRPF1	0.235531	MCM3	-0.475073	ELK1	0.0844201	HIST1H1C	0.564203
OGG1	-0.0697575	TRAM2	-0.674826	UXT	0.828483	HIST1H2BK	0.0467485
ARPC4,ARPC4- TTL13,TTL3	0.265127	ELOVL5	-0.723816	SLC38A5	0.401207	TRIM27	0.633386
JAGN1	0.746027	DST,LOC100652766	-1.23125	TIMM17B	0.766015	TRIM26	0.414282
FANCD2	-0.537563	RAB23	0.015595	SLC35A2	0.091533	NELF	0.275226
BRK1	0.0950109	EEF1A1	0.18294	OTUD5	0.392873	WDR85	0.601179
VHL	-0.357505	COL12A1	-1.92171	TFE3	0.53879	ZMYND19	0.637106
TATDN2	-0.319174	COX7A2	0.913539	PRAF2	0.405491	C9orf37	0.384013

ATG7	-0.350851	TMEM30A	-1.43143	WDR45	1.4606	TBL1X	-0.702451
MKRN2	-0.0365944	HMG3	-0.412338	GPKOW	0.173123	HCCS	0.697832
TMEM43	-0.554891	FAM46A	-1.11066	KDM5C	-0.378909	PRPS2	-0.190109
LSM3	0.403368	IBTK	-1.14697	SMC1A	-1.19043	TMSB4X	0.231908
SLC6A6	-0.705373	PGM3	0.0735408	HSD17B10	0.695306	RAB9A	0.602742
RAB5A	-0.124588	ME1	-0.307341	HUWE1	-1.38838	CA5B,CA5BP1,LOC 100506661	0.604956
UBE2E2	-1.08864	SNX14	-0.658045	LOC92249	0.656976	SYAP1	-0.0863327
UBE2E1	-0.181314	SYNCRIP	-0.650003	LAS1L	-0.0286782	TXLNG	-0.394918
RPL15	0.627918	SNHG5	2.39002	PDZD11	0.435479	PDHA1	0.352875
CMC1	0.255084	CGA	0.572673	SNX12	-0.0643352	MBTPS2,YY2	-0.946466
STT3B	-1.34229	RARS2	-0.20289	RPS4X	0.610823	SMS	0.132206
CNOT10	0.35876	AKIRIN2	0.489956	ABCB7	-0.302235	PRDX4	0.82342
CRTAP	-0.232497	UBE2J1	0.310488	MAGT1	-0.555099	EIF2S3	-0.353846
PDCD6IP	-0.440544	MAP3K7	-0.335949	TAF9B	-1.16251	POLA1,SCARNA23	-0.648826
STAC	-0.230036	COQ3	-0.592309	TSPAN6	-0.17159	MID1IP1	0.401308
MLH1	-0.0119659	PNISR	-0.596144	TIMM8A	0.138472	ATP6AP2	-0.506172
GOLGA4	-0.865202	CCNC	-0.664726	GLA	1.24629	USP9X	-1.26115
OXSR1	-0.247384	ASCC3	-0.961598	ARMCX6	0.916269	DDX3X	-1.36246
SLC25A38	0.899438	PREP	- 0.00298226	TCEAL8	-0.0109428	INE1,UBA1	-0.0394469
RPSA	0.751448	ATG5	-0.096791	MORF4L2	-0.374696	CDK16	0.0755277
EIF1B	0.895457	SEC63	-0.153455	TSC22D3	0.734427	USP11	0.923256
RPL14	0.734391	SNX3	-0.335272	PSMD10	-0.586909	ARAF	0.224848
CTNNB1	-0.563195	CD164	-1.34782	ACSL4,KCNE1L	-0.895347	TIMP1	1.31077
SS18L2	0.0660058	WASF1	-0.669059	AMMECR1	-1.06192	FTSJ1	0.509563
ABHD5	-0.0254911	FYN	-0.130908	CXorf61	1.22329	PORCN	0.811262
EXOSC7	0.51556	LAMA4	-0.469697	KLHL13	-2.1302	EBP	0.684371
LARS2	-0.313422	HDAC2	-0.512767	CXorf56	-0.0070525	WDR13	0.665144
SACM1L	-0.775609	TSPYL1	-0.544989	NKRF	-0.196747	SUV39H1	0.130084
DHX30	-0.0285274	GOPC	-1.53541	RPL39	1.08148	PQBP1	0.979703
TMA7	0.43888	SERINC1	-0.657195	UPF3B	-0.284852	PLP2	0.870119
ARIH2	0.294511	HDDC2	0.548297	LAMP2	-0.921277	TSR2	0.876155
WDR6	-0.346916	ECHDC1	-0.208218	CUL4B	-1.27214	GNL3L	-0.783323
NDUFAF3	0.0832162	PTPRK	-0.983071	C1GALT1C1	-0.288296	MAGED2	0.156974
TCTA	-0.0384827	EPB41L2	-0.995766	THOC2	-1.3708	APEX2	0.421586

DAG1	-1.76157	CTGF	-0.572581	SMARCA1	-1.91353	UBQLN2	-0.820107
APEH	0.0184672	SGK1	-0.215666	ZDHC9	-0.152847	LOC550643	0.0664771
SEMA3F	0.51952	HBS1L	-0.366526	ELF4	-0.429053	MSN	-0.4015
GNAI2	0.0173103	AHI1	-1.48982	AIFM1	0.370672	YIPF6	-0.452868
SEMA3B	-0.111914	BCLAF1	-1.22997	RAP2C	-0.840955	IGBP1	0.626847
CYB561D2	0.762213	MAP7	-1.88211	HS6ST2	-1.39349	KIF4A	-0.514663
MAPKAPK3	0.555816	IFNGR1	-0.086607	FAM122B	-1.07628	NONO	-0.230409
MANF	1.4686	PERP	-0.72247	FAM127C	-0.48615	OGT	-0.561362
TEX264	0.751034	CITED2	0.243467	FAM127B	0.618941	PIN4	0.468948
ABHD14A,ABHD14A -ACY1,ACY1	0.36233	FUCA2	0.44119	MMGT1	-0.61748	JPX	-0.699312
ALAS1	0.708471	HYMAI,PLAGL1	-0.835814	MAP7D3	-0.473468	COX7B	0.690007
SMIM4	1.38733	SF3B5	1.02591	RBMX	-0.685076	PGK1	0.0562203
GNL3	0.255352	FBXO30	-1.17335	ATP11C	-2.1545	SH3BGRL	-1.38793
SPCS1	0.00482275	PPIL4	-0.0157724	LDOC1	0.374968	CSTF2	0.368584
SLMAP	-0.708184	KATNA1,LATS1	-0.499979	IDS	0.0884722	CENPI	-1.55294
FLNB	-0.578514	NUP43	-0.27305	TMEM185A	0.222107	HNRNP2,RPL36A, RPL36A-HNRNP2	0.695661
ARL6IP5	-0.575032	LRP11	-1.41521	CXorf40B	0.989516	ARMCX3	-0.0836739
PPP4R2	-0.924977	ZBTB2	-0.43498	CETN2	-0.173685	WBP5	0.935544
CHMP2B	-0.579771	RMND1	0.485526	MAGEA1	- 0.00819081	NGFRAP1	-0.124212
COL8A1	-1.11938	FBXO5	-0.397171	HAUS7	0.510262	TCEAL4	0.43145
CMSS1	0.230492	MTRF1L	0.134289	FAM58A	0.815833	TCEAL3	0.0916513
NIT2	0.533946	DYNLT1	0.793914	BCAP31	0.741498	TCEAL1	0.0244491
TMEM45A	-0.292571	EZR	-0.265039	IDH3G	0.491427	ASAH1	0.00655188
TFG	0.140263	SOD2	1.52937	L1CAM	-0.57787	HR	-2.22823
PCNP	-0.883104	TCP1	0.0796197	NAA10	0.97062	REEP4	0.288672
NFKBIZ,NXPE3	-0.385232	LINC00473	-2.45079	HCFC1	-1.16737	TNFRSF10B	0.490071
ALCAM	-1.05172	T	-1.51121	IRAK1	0.668956	TNFRSF10D	0.0733863
PVRL3	-1.55099	SFT2D1	0.829379	MECP2	0.432811	LOXL2	0.0631008
PHLDB2,PLCXD2	-0.934925	MPC1	0.192862	FLNA	-1.16146	ENTPD4	-0.579144
ABHD10	-0.905174	RPS6KA2	-0.147301	LAGE3	1.08142	KCTD9	-0.833385
GTPBP8	-0.345074	PHF10	-0.615799	UBL4A	0.420663	CLU	-0.325816
ATP6V1A	-1.41069	PSMB1	0.507712	SLC10A3	0.801963	CCDC25	-0.445136
QTRTD1	-0.297305	PDCD2	0.257173	FAM3A	0.764304	PBK	-0.812375
TIMMDC1	0.372348	HEATR2	-0.342503	G6PD	0.00123331	TMEM66	-0.0240073

NDUFB4	0.596129	SUN1	-0.635208	CTAG2	0.761283	GTF2E2	0.436612
FAM162A	0.532704	GET4	1.44753	RWDD4	-0.587699	GSR	0.492221
PDIA5_SEC22A	-0.0677995	MAFK	0.600453	MLF1IP	-0.269067	PPP2CB	0.247613
CHCHD6	0.425779	NUDT1	0.594231	SORBS2	-1.92876	TTI2	0.280224
PLXNA1	-0.599432	EIF3B	0	FAT1	-0.749871	LSM1	0.671306
MCM2	0.185803	CHST12	-0.115374	SDHA	-0.0204074	PPAPDC1B	0.767059
PODXL2	0.374188	TTYH3	-0.729639	AHRR,PDCC6	0.323957	WHSC1L1	-0.483679
SEC61A1	0.585727	FOXK1	-0.751686	EXOC3	0.448201	TM2D2	0.160852
RAB7A	0.633174	AP5Z1	1.08223	CEP72,TPPP	-0.0861472	SLC20A2	0.49179
ACAD9	0.300815	LOC389458,RBAK,RBAK -LOC389458,RNF216P1	0.382024	TRIP13	0.00430961	CEBPD	-0.405405
COPG1	0.120719	WIPI2	0.0128608	NDUFS6	0.683722	PRKDC	-1.37508
C3orf37	0.14425	FSCN1	-0.275346	KIAA0947	-1.18278	RB1CC1	-1.45034
ATP2C1	-0.818096	CCZ1	0.437213	SRD5A1	-0.297326	ATP6V1H	0.579307
DNAJC13	-0.763605	AIMP2	0.447979	PAPD7	-0.2081	TCEA1	-0.66545
UBA5	-0.489883	RAC1	0.126336	MTRR	-0.271959	LYPLA1	-1.1506
CDV3	-0.145559	ZDHH4	0.360379	CCT5	0.140385	RPS20	0.843628
SRPRB	0.783758	GLCC11,LOC729852	-1.18522	MARCH6	-1.28302	IMPAD1	-0.827076
PCCB	-0.353205	PHF14	0.117185	TRIO	-1.40958	NSMAF	0.439077
NCK1	-0.585455	TMEM106B	-2.29473	FAM105A	-1.41479	TOX	-0.716521
FAIM	-0.104275	ARL4A	-0.477585	FAM105B	-0.761929	ASPH	-0.769906
MRPS22	0.47123	BZW2	-0.285894	BASP1	-0.60025	GGH	-0.0449201
SLC25A36	-1.32857	KLHL7	0.0165892	GUSBP1	0.330821	ARMC1	-1.21565
ZBTB38	-0.984499	NUPL2	0.567354	C5orf22	-0.68917	MYBL1	-1.7792
RNF7	0.265475	MALSU1	0.176716	SUB1	0.172624	SNHG6	0.132364
ATP1B3	0.348356	MPP6	-0.339024	NPR3	-1.03387	COPPS5	0.0331201
U2SURP	-0.816264	CBX3	-0.477828	TARS	0.376095	TRAM1	-1.05206
GYG1	0.260604	TAX1BP1	-0.0976475	RAI14	-1.04896	RPL7	0.348786
EIF2A	0.148911	GARS	1.34561	BRIX1	0.0670737	STAU2	-0.93767
SELT	-0.814954	FKBP9	-0.227689	DNAJC21	-0.373005	TCEB1	0.709017
MBNL1	-1.49898	SEPT7	-0.788443	IL7R	0.0248925	MRPS28,TPD52	-0.483231
GMPS	0.0802597	ANLN	-1.53001	SKP2	-1.10367	ZFAND1	0.154124
TIPARP	0.130195	EPDR1	-0.112477	NIPBL	-0.408015	C8orf59	-0.0392708
RSRC1	-0.566051	STARD3NL	-0.0118342	WDR70	-0.033985	FAM82B	-0.0174193
GFM1	-0.400771	YAE1D1	0.109177	OSMR	0.100378	NBN	-0.970399
MFSD1	-0.0892926	RALA	0.12817	C5orf51	-1.44974	LOC100127983	-0.699301

IQCJ,IQCJ- SCHIP1,SCHIP1	-0.107322	CDK13	-0.432452	FBXO4	-0.155475	KIAA1429	-0.811311
SMC4	-1.30974	MRPL32	0.514037	ZNF131	-0.104177	UQCRB	0.348706
NMD3	-0.541662	STK17A	-0.257502	NNT	-1.21938	MTERFD1	-0.136919
SERPINI1	-0.764966	BLVRA	0.475023	MRPS30	0.319214	RPL30	0.64707
SEC62	-0.145628	DBNL	-0.0232966	ITGA1,PELO	0.253881	HRSP12	-0.440347
PRKCI	-1.47397	YKT6	0.666541	NDUFS4	0.416745	COX6C	0.593021
FNDC3B	-1.35098	OGDH	-0.514469	GPX8	-0.30468	RNF19A	-1.83948
ECT2	-1.81337	ZMIZ2	-0.29945	SKIV2L2	-0.73275	PABPC1	-0.243759
MFN1	-1.07128	PPIA	0.443891	GPBP1	0.155943	YWHAZ	-0.770242
ACTL6A	-0.127825	CCM2	0.438943	NDUFAF2	0.607677	ZNF706	0.605096
NDUFB5	-0.166073	UPP1	2.1904	KIF2A	-0.686937	UBR5	-0.90855
USP13	-1.31079	EGFR	-0.167441	IPO11	-0.63371	KLF10	0.200087
FXR1	-0.459241	MRPS17	0.386931	CWC27	-0.232249	AZIN1	-0.222072
EIF2B5	0.571914	GBAS	-1.30496	PPWD1	-0.0839885	SLC25A32	-0.368539
DVL3	-0.357326	CCT6A	-0.252869	NLN	-0.791646	EIF3E	-0.223859
AP2M1	0.157198	SNORA15	-0.0126308	ERBB2IP	-1.72687	NUDCD1	-0.226605
ABCF3	0.534325	SUMF2	-0.189449	SLC30A5	-0.287166	EIF3H	0.306982
ECE2	0.608327	VKORC1L1	-0.458168	CCNB1	-0.717101	MIR3610,RAD21	-1.57501
PSMD2	0.568511	ASL	0.575707	CENPH	-0.33981	EXT1	-0.149299
EIF4G1	-0.502166	CRCP	0.722965	MRPS36	0.399518	TNFRSF11B	-0.336878
MAP3K13	-0.429722	TPST1	0.099143	CDK7	0.89838	TAF2	-0.596374
SENP2	0.0125265	LOC100996437,RABGEF 1	0.184789	MCCC2	-0.684128	DSCC1	-0.37553
DNAJB11	1.18709	TMEM248	-0.254777	MAP1B	-1.52594	MRPL13	0.218763
EIF4A2	-0.149907	SBDSP1	0.441007	TNPO1	-0.961124	DERL1	-0.146866
CCDC50	-0.200164	POM121	-0.568406	BTF3	0.584678	C8orf76,ZHX1,ZHX1 -C8ORF76	-0.176492
OPA1	-0.93597	WBSCR22	0.791641	HEXB	0.787482	ATAD2	-1.19893
FAM43A	0.149192	LIMK1	0.0405625	NSA2	0.407405	FBXO32	0.284359
PAK2	-1.03188	EIF4H	-0.0457599	HMGCR	-1.25906	TMEM65	-1.15585
FYTTD1	-0.984637	GTF2IRD1	-0.139666	F2R	-0.322988	TATDN1	0.109987
RPL35A	0.898491	GTF2I	-1.59586	PDE8B	-1.89135	KIAA0196	-0.79208
CRBN	0.0552077	RHBDD2	0.588643	ZCCHC9	0.271445	LOC100507056	-0.675985
SUMF1	-0.525519	POR	1.04811	COX7C	0.295723	FAM49B	-0.492722
TADA3	0.267434	MDH2	0.593933	RASA1	-1.02455	ASAP1	-0.888331
EMC3	0.956614	HSPB1	0.23535	POLR3G	-0.185382	NDRG1	0.830683

SEC13	0.429222	PTPN12	-0.594911	NR2F1	-1.01098	ST3GAL1	0.23879
VGLL4	-0.126156	PHTF2	-1.4698	ANKRD32	-2.52595	EIF2C2	-0.0230208
RAF1	0.220771	GNAI1	-0.288936	RHOBTB3	-1.57886	PTK2	-0.207565
RPL32,SNORA7A	0.78324	DBF4	-0.89759	CAST	-0.12807	TOP1MT	0.470592
NUP210	-0.847137	CLDN12	-0.553181	FAM174A	0.422751	ZC3H3	0.380151
CHCHD4	0.438001	CDK14	-1.10908	PAM	-0.575036	NAPRT1	0.0427029
XPC	0.109866	FZD1	-0.662194	PPIF5K2	-1.57957	EEF1D	1.09975
FGD5-AS1	-0.99132	ANKIB1	-1.1342	C5orf30	-0.51137	PYCRL	0.0737048
MRPS25	0.568515	GNG11	0.0431393	SLC25A46	-0.708869	TSTA3	0.662465
SH3BP5	-1.02926	PEG10	-2.12303	WDR36	-0.683408	FAM83H	0.155104
METTL6	0.251835	ACN9	-0.321356	EPB41L4A-AS1	2.26823	MIR937,SCRIB	-0.285142
HACL1	0.456946	BRI3	0.955706	SRP19	0.414506	PUF60	0.592864
ANKRD28	-0.467862	TRRAP	-1.41716	AP3S1	-0.480908	NRBP2	-1.07077
RFTN1	0.269798	ARPC1A	0.296751	COMMD10	-1.20643	EPPK1	-2.13203
MIR4442, TOP2B	-1.42092	ARPC1B	0.331422	TNFAIP8	-0.913175	PLEC	-0.711965
AZI2	0.400641	BUD31	1.19426	HSD17B4	-0.122208	SHARPIN	0.640463
OSBPL10	-0.559548	CPSF4	0.0284994	SNX2	0.0391421	BOP1	0.18433
CMTM6	-1.19309	ZNF655	-0.0904541	CSNK1G3	-1.0635	CPSF1,MIR939	-0.189789
DYNC1LI1	-0.0795847	COPS6	0.51898	LMNB1	-0.901164	VPS28	0.637034
GLB1,TMPPE	-0.0248761	LAMTOR4	0.772749	PRRC1	-0.742085	CYHR1	0.769581
UBP1	-1.18493	PILRB	0.624334	ISOC1	-0.199237	RECQL4	0.229229
LRRFIP2	0.509992	MEPCE	0.833141	RAD50	-0.726154	C8orf82,LRRC24	0.466561
ACAA1	0.643068	PCOLCE	-0.0558966	LEAP2,UQCRQ	0.807577	RPL8	0.951879
GORASP1	- 0.00044083 5	MOSPD3	0.190541	HSPA4	-0.0846084	COMMD5	0.79882
SEC22C	-0.942789	GNB2	0.547845	UBE2B	0.40969	SMARCA2	-1.16373
HIGD1A	-0.178739	POP7	0.792287	SEC24A	-0.806386	UHRF2	0.0953229
ANO10	-0.128959	SLC12A9	0.190626	CAMLG	0.266805	SNAPC3	-0.690062
TMEM158	1.53861	TRIP6	0.6247	C5orf24,DDX46	-0.956904	RRAGA	0.0448898
CCDC12	0.740318	SRRT	0.240776	TXNDC15	-0.0411968	FOCAD	-0.76974
SETD2	0.0137884	SERPINE1	0.877744	TGFBI	-0.0540364	MTAP	-0.512765
SCAP	0.101172	AP1S1	0.567536	KIF20A	-1.3756	ACO1	-0.0895418
ELP6	0.348527	ZNHIT1	1.04291	FAM53C	0.135675	DNAJA1	0.414937
SMARCC1	-0.976165	CUX1	-0.980991	KDM3B	-0.612072	CHMP5	0.567557
MAP4	-0.859361	LOC100289561,LOC1006 30923,PRKRIP1	0.700501	CTNNA1	-0.315767	NFX1	-0.355443

NME6	0.433836	LRWD1.MIR5090	0.793368	MATR3.SNHG4	-1.06451	UBE2R2	-0.536673
CCDC51	0.55795	ARMC10	-0.445258	PAIP2	0.0668159	UBAP1	0.310918
SHISA5	0.335775	PMPCB	-0.102478	UBE2D2	-0.0712443	NUDT2	0.484011
COL7A1.MIR711,PF KFB4	0	PSMC2	0.396105	CXXC5	-1.00204	RUSC2	0.217182
UQCRC1	0.450401	RINT1	-0.4728	CYSTM1	1.40475	CREB3	0.97591
NCKIPSD	-0.170188	HBP1	-0.0469981	ANKHD1,ANKHD1 - EIF4EBP3,EIF4EB P3	-0.0954848	RGP1	-0.885223
IP6K2	0.380956	BCAP29	-0.300542	SLC35A4	0.0521792	MSMP	-0.130929
PRKAR2A	-1.1613	DLD	-0.153059	IK.MIR3655	0.349341	GLIPR2	-0.603419
DALRD3	0.338396	IFRD1	0.749384	WDR55	-0.215684	CLTA	1.02912
IMPDH2	0.221919	MDFIC	-1.02845	HARS2	0.414954	MELK	-0.372104
QRICH1	-0.17496	TES	-0.541028	ZMAT2	0.0753346	LOC100506710	-0.415147
QARS	0.0272851	CAV2	-1.04135	KIAA0141	-0.204637	ZCCHC7	-0.0492448
USP19	-0.157071	CAV1	-1.32667	NDFIP1	0.0712581	GRHPR	0.317276
LAMB2	-0.773908	MET	-0.553198	TCERG1	-0.842269	ALDH1B1	-0.432735
CCDC71	0.0333945	CAPZA2	-0.690219	SPINK6	0.0469266	TJP2	-0.0616932
GPX1	0.643845	ST7,ST7-OT3	-0.0540752	SPINK13	-1.86966	MAMDC2	-1.85647
RHOA	-0.0866556	ING3	-0.554407	ABLIM3	0.521966	SMC5	-1.21154
GMPPB	-0.0239682	ARF5	0.429096	SLC26A2	-1.93005	GDA	0.147297
IP6K1	0.0995196	SND1	-0.0783385	HMGXB3	0.729958	ANXA1	0.791148
IFRD2	0.216347	HILPDA	0.232163	TCOF1	0	CEP78	-0.481773
HYAL3,NAT6	0.821474	METTL2B	0.150016	NDST1	-0.883985	PSAT1	0.634907
HYAL2	0.0490592	CALU	-0.62941	GM2A	-0.569844	TLE4	-1.17609
TUSC2	0.786108	FLNC	0.588609	G3BP1	-0.712021	NAA35	-0.12638
RASSF1	1.52639	ATP6V1F	0.983502	MFAP3	-0.754184	CTSL1	1.92136
TMEM115	0.785996	MEST	-0.189552	GALNT10	-0.891943	SPIN1	-1.91699
PCBP4	0.439549	MKLN1	-0.561142	LARP1	-0.575488	C9orf47,S1PR3	-1.01845
RPL29	0.659583	EXOC4	-0.938627	CNOT8	-0.317004	CKS2	-0.223718
DUSP7	0.30825	BPGM	0.734515	MRPL22	0.54666	C9orf89	1.31769
POC1A	0.32236	CALD1	-1.66062	CYFIP2	-1.84241	FAM120A	-1.21104
TWF2	0.591663	NUP205	-0.674609	THG1L	0.479864	HIATL1	-0.532512
WDR82	-0.639347	C7orf73	-0.212576	UBLCP1	-0.597467	C9orf3	0.251263
BAP1	0.27505	C7orf55,C7orf55- LUC7L2,LUC7L2	-0.404863	TTC1	0.740064	NCBP1	-0.534344

NT5DC2	0.477952	LOC100129148	-1.71646	PTTG1	0.0596203	FOXO1	-1.52268
GLT8D1	-0.104398	LOC100129148	-0.121055	CCNG1	-0.946358	ANP32B	0.122881
RFT1	-0.262309	NDUFB2	0.905279	HMMR	-1.83973	NANS	1.04489
TKT	-0.103347	SSBP1	0.736609	MAT2B	-0.70343	TGFBR1	-0.8891
SELK	1.57513	GSTK1	0.463367	WWC1	-0.576155	SEC61B	0.930211
WNT5A	-1.02716	CASP2	-0.505281	RARS	0.233096	MSANTD3,MSANTD 3-TMEFF1,TMEFF1	0.629841
FAM208A	-1.55279	ZYX	0.263033	SPDL1	-0.68848	RNF20	-0.798389
ARF4	0.0133089	CUL1	-0.336623	NPM1	-0.0432969	SMC2	-1.35865
PDHB	-0.491352	ZNF282	0.50509	ERGIC1	-0.355114	NIPSNAP3A	-0.921224
THOC7	-0.11359	LRRC61	0.402397	RPL26L1	1.06683	SLC44A1	-1.60007
PSMD6	0.438158	REPIN1	0.170707	ATP6V0E1	0.76709	TMEM38B	-0.139476
LRIG1	0.102462	ABCB8	0.109445	SFXN1	-0.644482	RAD23B	-0.713917
SUCLG2	-0.849401	SLC4A2	-0.466386	HIGD2A	0.756348	FAM206A	0.0201299
UBA3	-0.722912	AGAP3	0.214827	FAF2	-0.315426	AKAP2,PALM2,PAL M2-AKAP2	-0.977841
ROBO1	-1.32665	CHPF2,MIR671	0.26229	TSPAN17	0.328593	DNAJC25,DNAJC25 -GNG10,GNG10	-0.627519
GBE1	-0.559631	NUB1	0.171476	PRELID1	0.645564	UGCG	-0.710196
CGGBP1	-0.990954	GALNT11	-1.07596	GRK6	-0.852006	HSDL2	-0.266901
CLDND1	-0.167064	INSIG1	-0.63589	PRR7	0.331429	SLC31A1	0.275786
TOMM70A	-0.365095	UBE3C	-0.523694	TMED9	0.76584	PRPF4	0.0164511
RPL24	0.955451	DNAJB6	0.135065	B4GALT7	0.593695	ATP6V1G1	0.807662
CD47	-0.165311	PRKAR1B	0.715225	LOC728554	0.00021854 3	TRIM32	0.011418
KIAA1524	-1.15144	C7orf50	0.49204	RMND5B	-0.0014289	GSN	-1.24269
ATG3	0.443298	ZFAND2A	1.9676	HNRNPAB	0.130902	DAB2IP	-0.487551
CCDC80	-1.02891	INTS1	0.671302	RUFY1	-0.159562	MRRF	0.259229
NAA50	-1.00109	PSMG3	0.699186	CANX	-0.384517	RABGAP1	-0.0122255
B4GALT4	-0.288503	MAD1L1	2.32182	MAML1	0.213748	NEK6	-0.457869
COX17	0.442625	FTSJ2	0.444923	SQSTM1	1.89704	LOC100129034	-0.135089
GSK3B	-0.654767	BRAT1	0.318648	CNOT6	-1.19286	OLFML2A	-2.13305
LRRC58	-1.79927	GNA12	-0.269144	TRIM41	0.530798	ARPC5L	0.740478
FSTL1,MIR198	-0.846172	TNRC18	-0.347587	CCDC127	0.778389	RABEPK	0.798934
CCDC58	0.610541	FBXL18	-0.305697	PP7080	0.69577	GAPVD1	-0.745413
KPNA1	-0.72795	ACTB	-0.673785	BRD9	0.372096	STXBP1	-0.221464
PTPLB	-1.65375	RNF216	0.0963268	CLPTM1L	0.355922	CDK9	-0.0201914

ITGB5	0.377702	EIF2AK1	-0.407486	LPCAT1	-0.863528	FPGS	0.440843
HEG1	-2.42233	CYTH3	-0.730235	LOC728613,SDHA P3	0.309888	SLC25A25	1.13622
SNX4	-0.764626	FAM220A	-0.471914	MRPL36	0.882275	C9orf16	1.39173
SLC41A3	- 0.00216545	DAGLB	0.820218	MED10	1.43955	DNM1	-0.706559
TPRA1	2.19288	KDELR2	-0.390385	NSUN2	-0.0263447	SWI5	0.807744
MGLL	0.118919	RPA3	0.424487	FASTKD3	-0.402601	COQ4	0.758865
RUVBL1	0.322577	NDUFA4	0.34368	FAM173B	-0.786639	SLC27A4	0.100799
GATA2	-0.0470227	TWIST1	0.0550301	CMBL	0.0622958	URM1	0.511668
RPN1	0.401875	TWISTNB	-0.747212	DAP	0.3716	CERCAM	0.567507
ISY1,JSY1- RAB43,RAB43	0.493841	CDCA7L	-0.818947	ANKH	-0.971558	ODF2	-0.185499
CNBP	0.30861	TOMM7	0.784221	ZNF622	1.18319	GLE1	-0.0276211
H1FX	0.327086	FAM126A	-0.338918	MYO10	-1.03077	SPTAN1	0.0139115
MBD4	-0.0217282	IGF2BP3	-0.807806	DROSHA	-0.172718	SET	-0.446161
PLXND1	-0.263547	TRA2A	-0.325445	GOLPH3	-0.655499	PKN3	0.441528
PIK3R4	-0.0896909	DFNA5	-0.987896	MTMR12	-0.680876	TBC1D13	0.0375995
MRPL3	-0.131516	OSBPL3	-0.853063	ZFR	-0.427764	ENDOG	0.782075
TOPBP1	-0.698972	CYCS	-0.272341	RAD1	-0.230157	LRRC8A	0.167212
SLCO2A1	-0.268657	HNRNPA2B1	-0.714514	NADKD1	-0.805164	NUP188	-0.605173
RYK	-0.494215	HOXA10,HOXA10- HOXA9,HOXA9	-0.160222	NUP155	-0.853263	FAM73B	0.86742
AMOTL2	0.0237753	HOXA11,HOXA11-AS	0.757933	RICTOR	-1.90898	DOLPP1	0.52643
ANAPC13	0.391074	HIBADH	-0.512602	DAB2	-1.20503	PPP2R4	-0.0557816
STAG1	-1.17529	SCRN1	-0.271179	PRKAA1,TTC33	-1.15092	LOC100128077,LOC 100506190	-0.433858
COPB2	-0.2195	FKBP14	-0.648987	LOC100506548	1.07294	NTMT1	0.8491
PCOLCE2	0.262966	GGCT	-0.0509806	RPL37	0.698244	PRRX2	0.130612
PLOD2	-1.46254	LSM5	-0.348054	OXCT1	-0.61125	TOR1B	0.0850116
HLTF	-1.29494	KBTBD2	-0.427551	HMGCS1	-1.43387	GPR107	-0.521854
TM4SF1	-0.161776	NT5C3	-0.229007	C5orf28	-0.723087	NCS1	-0.199552
WWTR1	-0.519435	DPY19L1	-1.30035	C5orf34	-0.425897	ASS1	-0.269012
COMMD2	-0.537391	MPLKIP	0.19156	PAIP1	0.107161	FUBP3	-0.267433
PFN2	-0.692468	PSMA2	0.395656	MOCS2	0.361429	EXOSC2	0.142111
SERP1	0.0210663	COA1	0.466589	DHX29	-0.84023	ABL1	0.0145063
SIAH2	0.491381	MRPS24,URGCP,URGC P-MRPS24	0.799266	PPAP2A	0.142074	LAMC3	0.0713095

DHX36	-0.606753	POLD2	0.348061	IL6ST	-1.26745	NUP214	-0.133853
SLC33A1	0.0530584	NUDCD3	-0.609257	PLK2	0.515234	PRRC2B	-0.982067
SSR3	0.472447	DDX56, TMED4	0.472201	PDE4D	-2.07908	POMT1	0.180808
KPNA4	-0.0774657	H2AFV	-0.302154	DEPDC1B	-1.21828	GTF3C4	-0.768025
PDCD10	0.114625	PURB	-0.933203	C5orf43	-0.851803	GTF3C5	0.21204
GOLIM4	-1.61801	SNHG15	2.21937	DIMT1	-0.268204	RPL7A	0.470941
RPL22L1	0.625117	TBRG4	0.582285	CENPK	-0.532342	SURF2	0.851178
TBL1XR1	-1.84588	IGFBP3	-1.17188	TAF9	0.0873918	LINC00094	-0.319943
GNB4	-1.88253	TNS3	-1.40965	MRPS27	-0.562327	WDR5	-0.0176101
MRPL47	0.509344	HUS1	0.631008	GFM2	0.0542912	RXRA	-0.723344
DCUN1D1	-1.0761	FIGNL1	-0.935542	WDR41	-0.335054	COL5A1	-1.49602
PARL	0.418603	GRB10	0.0636807	TBCA	0.529975	OLFM1	-0.607007
ALG3	0.881763	SEC61G	0.519761	AP3B1	-0.705121	MRPS2	0.819961
MAGEF1	0.739897	VOPP1	-0.173243	ARSB	-0.598738	GPSM1	0.617891
TRA2B	-0.520452	PSPH	0.423979	DHFR	-0.882784	PMPCA	0.204125
RFC4	0.022595	CHCHD2	0.760003	RPS23	0.643932	TMEM141	0.495075
RPL39L	0.752099	GUSB	0.532235	TMEM167A	-0.876619	RABL6	-0.129399
LEPREL1	0.147555	SBDS	0.111888	EDIL3	-2.10707	PHPT1	0.634118
FGF12	-1.43898	NSUN5	1.08504	CCNH	0.485164	TRAF2	0.609788
ATP13A3	-1.55938	BAZ1B	-0.291858	CETN3	-0.228579	C9orf142	0.76192
LSG1	0.265727	BCL7B	0.570467	ARRDC3	-1.32612	UAP1L1	1.34347
XXYL1	-0.838506	TBL2	0.570739	MCTP1	-1.95868	MAN1B1	0.217645
PPP1R2	-0.311174	RFC2	0.191001	TTC37	-1.3069	SSNA1	0.862436
TFRC	-1.00756	STAG3L2	-1.51442	GLRX	1.22606	NDOR1	0.872501
PCYT1A	-0.116159	WBSCR16	0.329252	ELL2	-0.0773186	TUBB4B	0.317838
TCTEX1D2, TM4SF1 9, TM4SF19- TCTEX1D2	0.48327	POM121C	-0.501202	EFNA5	-0.396324	COBRA1	0.300793
NCBP2	-0.3743	STYXL1	1.48233	PJA2	-1.71859	TOR4A	1.09805
DLG1	-0.587073	YWHAG	-0.930681	STARD4	-1.45459	MRPL41	1.1989
PIGG	-0.0429055	TMEM60	0.0112498	NREP	-2.23852	EHMT1	-0.802445
FGFRL1	-0.106955	SEMA3C	-1.87657	REEP5	0.00545821	CBWD1	0.279654
MAEA	0.201329	CACNA2D1	-2.76645	TICAM2, TMED7, T MED7-TICAM2	-1.18692	KIAA0020	0.00389287
TACC3	-0.134936	C7orf23	0.223102	ATG12	0.848093	AK3	-0.716214
WHSC1	-0.863984	SRI	-0.192337	LOX	-0.930165	RANBP6	-1.01826
C4orf48	1.25245	CYP51A1	-0.753934	PPIC	0.0555306	C9orf123	0.561121

RNF4	-0.083782	CDK6	-1.00508	ALDH7A1	-0.55222	PSIP1	-1.10535
ADD1	-0.396001	TFPI2	0.478748	FBN2	-1.05812	HAUS6	-0.874296
HTT	-1.1306	SGCE	0.203657	HINT1	0.533464	RPS6	0.591853
STK32B	-0.350654	PON2	-0.790254	P4HA2	0.464785	MLLT3	-0.823199
MRFAP1	0.0703892	SLC25A13	-0.782237	AFF4	-1.40193	KLHL9	-0.842089
LOC93622	0.35438	SHFM1	0.604499	FSTL4	-1.07051	MIR31HG	-0.955483
HTRA3	0.169816	ASNS	1.72398	C5orf15	-0.555173	CDKN2A	0.425378
LAP3	0.465465	MGC72080	0.793829	VDAC1	-0.17572	CDKN2B	-0.794501
MED28	-0.054212	BAIAP2L1	0.0895959	SKP1	0.65251	TUSC1	0.295577
NCAPG	-1.11858	PDAP1	0.52154	PPP2CA	-0.107879	CAAP1	-0.202521
C4orf52	0.847782	ATP5J2,ATP5J2- PTCD1,PTCD1	0.871959	CDKN2AIPNL	0.0467064	PLAA	-0.19253
RBPJ	-1.53555	ZNF3	0.661936	PITX1	-0.124727	NDUFB6	0.282687
PCDH7	-0.802511	MCM7	-0.0894344	H2AFY	0.0403316	APTX	0.472381
PGM2	-0.192484	TAF6	-0.0810787	SPOCK1	-1.14072	SMU1	-0.125887
FAM114A1	-0.963685	PPP1R35	0.579856	HNRNPA0	-0.199451	B4GALT1	-0.896531
KLHL5	-0.713281	TSC22D4	0.836183	BRD8	-0.333101	BAG1	0.664983
UBE2K	-0.407456	LRCH4	0.423386	CDC23	-0.522118	AQP3	-1.27684
LIMCH1	-1.30814	GIGYF1	0.288953	ETF1	0.0250647	NOL6	-0.244954
TMEM33	0.430855	EPHB4	-0.061016	HSPA9	0.268437	UBAP2	0.117466
SLC30A9	-0.881563	PLOD3	0.783254	SIL1	0.524791	DCAF12	-0.297594
OCIAD1	-0.0653228	FIS1	0.723211	TMEM173	1.28741	RPP25L	0.724161
DANCR	0.0736897	POLR2J	0.708455	PFDN1	0.324885	DCTN3	0.575833
FIP1L1	0.654347	DNAJC2	0.138985	SRA1	1.2919	SIGMAR1	0.0527418
TMEM165	-0.635022	ORC5	-0.321931	NDUFA2	0.738091	VCP	0.0928485
PAICS	-0.61953	SRPK2	-0.904106	HARS	0.629416	FANCG	0.232021
SRP72	-0.683448	PUS7	-0.788947	TAF7	0.29136	PIGO	-0.354083
POLR2B	-0.625468	SYPL1	-0.870728	DIAPH1	-0.560523	STOML2	0.635196
AMTN	-0.84727	NAMPT	0.201978	HDAC3	0.267972	ARHGEF39	-0.0241964
UTP3	0.622162	COG5	-0.602549	GNPDA1	1.01696	TPM2	0.496564
DCK	-0.833724	LAMB1	0.192248	NR3C1	-1.12999	TLN1	-1.14191
USO1	-0.776911	IMMP2L	-0.1018	YIPF5	-0.0637555	HINT2	0.816396
SEPT11	-1.19744	LOC401397	-0.0494339	LARS	-0.463055	TOMM5	0.220188
MRPL1	-0.350657	TSPAN12	-0.112882	DPYSL3	-0.650144	EXOSC3	0.130822
ANXA3	0.125086	FAM3C	0.12091	CSNK1A1	-0.223227	SHB	1.00104
ENOPH1	0.0638267	NDUFA5	-0.485025	RPS14	0.712982	KLF9	-1.18673

COPS4	-0.357559	WASL	-0.856246	DCTN4	-0.976197	TMEM2	-0.790527
MRPS18C	0.315829	IMPDH1	0.381511	TNIP1	1.76333	ZFAND5	-0.101029
SMARCAD1	-1.28074	TNPO3	-0.515685	ANXA6	0.0222454	C9orf40	-0.00756992
PDLIM5	-0.90753	UBE2H	0.0424573	ATOX1	1.21301	C9orf41	-1.21927
RAP1GDS1	-0.396395	ZC3HC1	0.2759	GEMIN5	-0.449285	RFK	-0.886022
METAP1	-0.725339	TMEM209	-0.893479	ADAM19	0.0598728	PRUNE2	-2.65733
NFKB1	0.66038	PODXL	-0.509569	CLINT1	-0.626465	GNAQ	-1.22379
NPNT	-2.26036	CHCHD3	0.489768	RNF145	-0.903249	TLE1	0.74795
AIMP1	0.133468	AKR1B1	0.658894	SLU7	0.651307	UBQLN1	-0.18159
HADH	-0.17481	C7orf49	0.587373	NUDCD2	-0.167217	C9orf64	-0.224403
RPL34	0.599694	MTPN	-1.27131	PANK3	-0.588261	HNRNPK	-0.489197
OSTC	0.109085	CREB3L2	-1.09403	FBXW11	-0.732328	GOLM1	-0.364845
GAR1	0.103263	KIAA1549	-1.28041	DUSP1	1.10454	ISCA1	-0.064362
LARP7	-0.246415	ZC3HAV1	-0.711351	STC2	2.71932	GAS1	-1.61215
UGT8	-1.46981	MKRN1	0.155802	BOD1	0.944568	ROR2	-0.865825
SNHG8	1.76076	EZH2	-0.181475	THOC3	0.130649	SPTLC1	-0.125382
EXOSC9	0.416494	PDIA4	0.857866	KIAA1191	0.457694	IARS	0.323725
FGF2	-1.12694	CDK5	0.0688422	NOP16	0.821635	NOL8	0.0828366
HSPA4L	-0.925027	FASTK	0.714377	CLTB	0.890065	IPPK	-0.132243
PLK4	-1.0043	TMUB1	0.765105	RAB24	0.989912	BICD2	-0.112717
PHF17	-1.01776	ABCF2	0.141175	LMAN2.MXD3	0.661269	NINJ1	0.561705
NAA15	-1.31516	RHEB	0.0701216	DBN1	-0.173391	FAM120AOS	0.172068
MGST2	0.738597	LMBR1	-1.37593	PDLIM7	-0.115986	BARX1	-0.252584
ZNF330	0.447364	NCAPG2	-1.05523	DDX41	0.305688	ZNF367	-1.047
SMARCA5	-0.567129	ESYT2	-1.16743	NHP2	0.49223	AAED1	0.2391
ABCE1	-1.06852	ARHGEF10	-0.699707	HNRNPH1	-0.601013	TRIM14	-0.5715
LSM6	0.579043	AGPAT5	-0.868462	MGAT4B	0.594092	TBC1D2	0.700979
TMEM184C	-0.629512	ERI1	-0.589176	TBC1D9B	-0.184971	ALG2	1.06416
RPS3A,SNORD73A	0.618033	FDFT1	-0.239006	MAPK9	-0.523801	ERP44	0.183987
MND1	0.168052	TUSC3	0.0746335	MGAT1	0.795069	TEX10	-0.0189991
TMA16	-0.328163	VPS37A	0.0705935	TRIM7	0.382535	MRPL50	0.364839
MSMO1	-1.20177	SLC7A2	-0.148684	GNB2L1	0.630657	TMEM246	-0.0936451
CPE	-0.657963	PCM1	-0.988182	FOXQ1	0.245507	KLF4	0.956787
TLL1	-1.27209	SH2D4A	-0.102932	FOXF2	0.0459717	IKBKAP	-0.65049
PALLD	-0.922289	INTS10	0.126703	FOXC1	-0.0591723	CTNNA1	-0.630886
CLCN3	-1.37741	LPL	-1.34953	WRNIP1	0.182726	TMEM245	-1.07902

GALNT7	-2.08449	ATP6V1B2	0.365331	NQO2	0.837078	TXN	0.875298
SAP30	-0.209988	XPO7	-0.652462	PSMG4	0.591384	KIAA0368	-0.585654
SPCS3	-0.626416	BMP1	-0.22035	FAM50B	0.340886	PTGR1	1.12365
NEIL3	-0.54487	POLR3D	0.727408	PRPF4B	-1.32712	PTBP3	-1.54762
CDKN2AIP	-0.485204	SLC39A14	-0.139466	CDYL	-0.212519	INIP	-0.419159
SLC25A4	-0.0543247	SORBS3	0.316371	FARS2	0.152147	FKBP15	0.315088
FRG1	0.380773	PDLIM2	-0.0286445	RIOK1	0.288873	CDC26	0.435455
ATP5I	0.764762	KIAA1967	0.0564631	SNRNP48	-0.592599	POLE3	0.0389362
GAK	0.651478	CHMP7	0.524237	BMP6	-0.356299	DFNB31	0.167437
RNF212	-0.168344	R3HCC1	0.616531	PAK1IP1	-0.115679	CDK5RAP2	0.652256
CTBP1	-0.266289	SLC25A37	0.539946	TMEM14C	0.0629959	MEGF9	-1.13017
SLBP	-0.175584	DOCK5	-0.852223	TMEM14B	-0.0579962	FBXW2	-0.118455
LETM1	0.106141	CDC42	-0.938043	NOL7	0.656615	PSMD5	-0.603675
MIR943,WHSC2	0.402402	PPP2R2A	-0.213125	RNF182	-2.41433	PHF19	-0.21629
MIR4800,MXD4	-0.251978	BNIP3L	-0.037801	CD83	-0.636883	RAB14	-0.700701
TNIP2	1.22456	DPYSL2	-1.27569	CAP2	-1.20894	STOM	-0.734492
MFSD10	0.586469	SCARA3	-1.06674	E2F3	-0.898415	NDUFA8	0.620754
NOP14	-0.0192017	ESCO2	-0.824828	SOX4	-1.1811	PDCL	-0.178755
LRPAP1	0.589924	ELP3	0.17649	GMNN	0.197887	RC3H2	-1.12408
LYAR	0.759012	EXTL3	-0.0240405	HIST1H2AC	-0.522338	STRBP	-0.323177
STX18	0.557366	LEPROTL1	-0.399738	HIST1H2BD	-0.225565	DENND1A	-0.549777
MRFAP1L1	0.0465339	DCTN6	0.13132	HMGNA4	-0.0659229	PSMB7	0.619329
GRPEL1	0.80248	ZNF703	0.424354	ABT1	0.552867	RPL35	1.08678
AFAP1	-0.924455	ERLIN2	-0.307503	HLA-A,HLA-H	0.845528	PPP6C	-0.0459588
ACOX3	-0.91471	PROSC	-0.191446	ZNRD1	1.15757	HSPA5	1.4652
WDR1	-0.220908	EIF4EBP1	1.15076	PPP1R11	0.374919	MAPKAP1	-0.181396
RAB28	-0.452814	ASH2L	-0.298505	RPP21,TRIM39,T RIM39-RPP21	0.836903	RPL12	0.874091
FBXL5,LOC1009966 23	-0.117842	DDHD2	-0.944297	HLA-E	1.33928	FAM129B	0.429623
QDPR	0.489329	TACC1	-0.707956	ABCF1	0.122577	PTRH1	0.601121
GPR125	-0.834509	PLEKHA2	-1.8265	MRPS18B	0.617465	ENG	0.147014
DHX15	-0.512209	ADAM9	-1.1709	TUBB	-0.170721	AK1,ST6GALNAC4, ST6GALNAC6	0.592712
SEL1L3	0.0285408	C8orf4	-0.197268	DDR1	-0.16504	DPM2	0.538835
RFC1	-0.200896	GOLGA7	0.140767	GTF2H4,VARS2	0.640505	PTGES2	0.432829
RPL9	0.648954	GINS4	-0.555415	TCF19	-0.560524	CIZ1	0.340875

UGDH	0.892358	AGPAT6	0.173738	MICA	0.935174	GOLGA2	-0.458903
PDSSA	-1.35875	POLB	0.746597	NFKBIL1	1.26471	TRUB2	0.117126
COMMD8	-0.583772	VDAC3	0.0987984	PRRC2A	-0.50237	WDR34	-0.0398726
OCIAD2	1.39626	C8orf40	0.545508	CSNK2B	0.849449	ZDHC12	0.00830345
SGCB	-0.45505	FNTA	0.231543	HSPA1A	0.969937	ZER1	-0.211325
SCFD2	-0.456319	HGSNAT	-1.0594	HSPA1B	0.794287	C9orf114	0.470308
NMU	-0.359942	KIAA0146	-0.920207	C6orf48	1.92254	CCBL1	-0.441398
PPAT	-0.61409	MCM4	-0.572823	SKIV2L	-0.0791828	DOLK	0.45235
NOA1	0.0866953	UBE2V2	-0.729673	EGFL8,PPT2,PPT 2-EGFL8	0.511066	SH3GLB2	0.176757
IGFBP7	0.392993	MRPL15	0.466432	RNF5	0.406755	IER5L	0.78839
UBA6	-1.25972	TGS1	-0.384107	BRD2	0.730796	ASB6	0.767459
YTHDC1	-0.314243	CHCHD7	0.143888	SLC39A7	0.407656	PTGES	1.57017
GRSF1	-0.296892	SDCBP	0.145259	RING1	0.203662	TOR1A	0.349758
ANKRD17	-1.25639	RAB2A	-0.665935	RPS18	0.978201	C9orf78	0.097207
G3BP2	-1.29124	YTHDF3	-0.893141	PFDN6	0.713788	FBNP1	-0.314197
SDAD1	0.1253	MTFR1	-0.656859	KIFC1	-0.410728	UCK1	0.364169
NUP54	-0.200428	RRS1	0.0866792	ITPR3	0.649542	RAPGEF1	0.10886
SCARB2	-0.693028	TERF1	-0.629558	HMGA1	1.07119	MED27	0.530103
CCNI	-0.613582	RDH10	-0.447261	SNRPC	0.700384	TTF1	0.27596
HNRNPD	0	TMEM70	-0.0501389	RPL10A	0.546063	DDX31	0.099794
HNRPDL	-0.156173	FABP5	0.671367	MAPK14	-0.488255	SURF6	0.744384
SEC31A	-0.540002	WWP1	-0.757759	KCTD20	-0.918414	MED22	0.0215804
LIN54,THAP9-AS1	0.528415	CPNE3	-1.36368	SRSF3	-0.432571	SURF1	0.864213
PLAC8	-1.16957	DECR1	-0.47767	CDKN1A	1.8255	SURF4	0.415018
COQ2	-0.697848	INTS8	-0.91984	C6orf89	-1.11622	REXO4	0.729869
HSD17B11	-0.537604	LOC100506538,TP53INP 1	0.364029	FTSJD2	-0.183777	SLC2A6	0.660563
PIGY	-0.188159	PTDSS1	0.221767	ZFAND3	0.267627	VAV2	-0.405032
SNCA	-0.0564168	SDC2	-1.00231	FOXP4	-0.657649	BRD3	-0.792853
EIF4E	-0.354152	MTDH	-0.722949	PRICKLE4,TOMM 6	0.544787	RNU6ATAC	1.06249
ADH5	0.171505	LAPTM4B	-0.12476	BYSL	0.825569	C9orf116	0.208091
LAMTOR3	0.419081	POLR2K	0.517992	RPL7L1	-0.474637	CAMSAP1	-0.31311
H2AFZ	0.164621	ATP6V1C1	0.214451	CNPY3	0.760546	UBAC1	0.00959483
PPP3CA	-1.25421	FZD6	-1.00116	PPP2R5D	-0.171545	NACC2	-1.46028
SLC39A8	-0.408736	DCAF13	0.107919	KLHDC3	-0.258324	C9orf69	0.286152

UBE2D3	-0.23742	OXR1	0.335799	RRP36	0.405959	QSOX2	-0.237579
CENPE	-2.19707	EMC2	-0.0139071	SRF	-0.347586	DNLZ	1.19188
PPA2	-0.443851	ENY2	0.497068	TJAP1	0.955424	SNAPC4	0.943862
INTS12	0.812613	NOV	1.00345	MAD2L1BP	0.932935	SDCCAG3	0.672416
PAPSS1	-0.613066	FAM91A1	-0.862202	SLC29A1	0.128552	SEC16A	-0.210934
ELOVL6	-0.293065	NDUFB9	1.02449	HSP90AB1	0.04622	NOTCH1	-0.263038
CAMK2D	-0.756865	SOLE	-0.715761	CDC5L	-0.247652	AGPAT2	1.49418
ARSJ	-0.965456	NSMCE2	0.557507	CD2AP	-1.58594	SNHG7,SNORA17,S NORA43	0.987495
PRSS12	-0.687399	MYC	0.499511	CENPQ	-0.14173	EDF1	0.900596
SEC24D	-0.0914035	LOC100507101,MIR1204 .PVT1	1.16178	TMEM14A	-0.0663487	FBXW5	0.522445
C4orf3	-0.522772	EFR3A	-1.35783	FBXO9	- 0.00031625 7	CLIC3	-0.399105
MAD2L1	-0.639047	PHF20L1	-0.888553	BAG2	-0.12022	ABCA2	-0.832498
ANXA5	0.778379	CHRA1	-0.433911	MIR548U	-0.0758013	NPDC1	0.675904
CCNA2	-1.05716	LY6K	1.61812	PTP4A1	-1.30282	SAPCD2	-0.739747
NUDT6	-0.572585	THEM6	-0.128344	OGFRL1	-0.88925	DPP7	0.999649
PGRMC2	-0.959512	LY6E	0.559459	MTO1	-0.204968	ANAPC2	0.422564
SCLT1	-0.903534	TIGD5	0.0620871	CD109	-1.50915	TPRN	1.01107
SLC7A11	-0.202683	GRINA	1.13894	SENP6	-1.12414	TMEM203	0.489662
NDUFC1	0.0631234	EXOSC4	1.16083	TTK	-1.28911		
SETD7	-1.01142	GPAA1	0.188166	BCKDHB	-1.01759		
RNF150	-2.55253	CYC1	0.489088	TPBG	1.04212		
SMARCA5-AS1	-1.63185	MAF1	0.637442	CYB5R4	-0.488685		
SH3D19	-0.916783	HSF1	0.1936	NT5E	0.752636		
PET112	0.0957679	SLC52A2	1.02909	SLC35A1	-0.30145		
PLRG1	0.256819	PPP1R16A	0.379561	ORC3	-0.708138		
C4orf46	-0.573858	MFSD3	-0.30134	PNRC1	-0.127971		
PPID	0.420661	C8orf33	0.365366	AMD1	-1.07354		
NAF1	-0.201086	MFHAS1	0.00818204	GTF3C6	0.183968		
C4orf27	-0.077449	PINX1	0.86024	RPF2	0.469708		
HMGB2	-0.363759	CTSB	0.535301	MARCKS	-1.4453		
DCTD	0.60729	CNOT7	-0.623793	NT5DC1	-0.53095		