

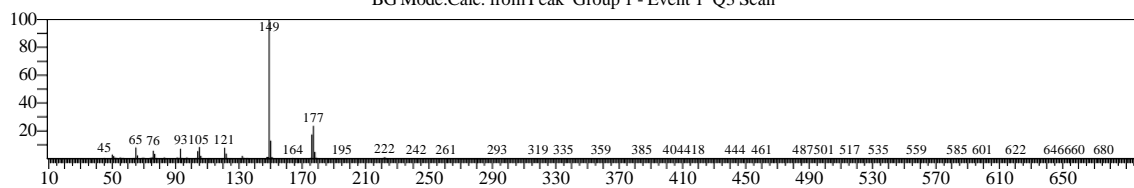
Peak Report TIC

Peak#	Name	R.Time	Area	Area%	Height	Height%	A/H	Base m/z
1	Diethyl Phthalate	25.644	28750001	4.49	5027110	4.46	5.72	149.00
2	1-Nonadecene	30.967	6517529	1.02	2223225	1.97	2.93	83.10
3	Neophytadiene	31.904	42863553	6.69	15695125	13.91	2.73	95.10
4	Neophytadiene	32.782	18715910	2.92	7356955	6.52	2.54	82.10
5	Hexadecanoic acid, methyl ester	33.756	16751514	2.62	6030900	5.35	2.78	74.05
6	n-Hexadecanoic acid	35.090	237071709	37.03	29214813	25.90	8.11	73.00
7	Octadecanoic acid	38.753	160556605	25.08	30288474	26.85	5.30	57.05
8		42.139	129066279	20.16	16979250	15.05	7.60	73.05
			640293100	100.00	112815852	100.00		

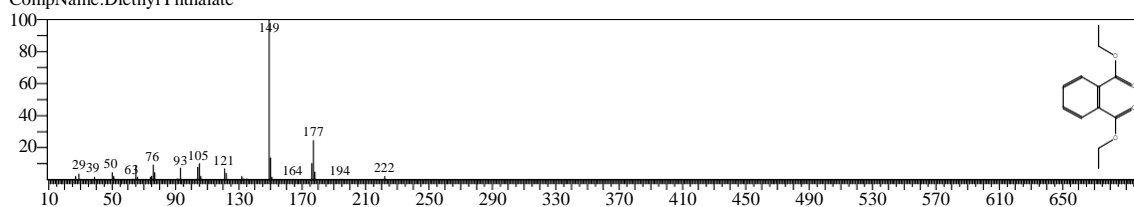
Library

&lt;&lt; Target &gt;&gt;

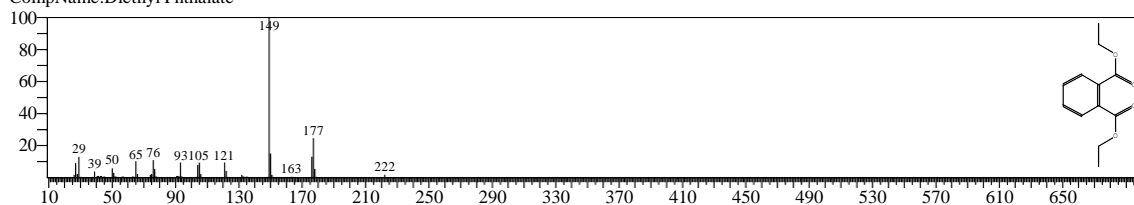
Line#:1 R.Time:25.645(Scan#:4330) MassPeaks:330  
RawMode:Averaged 25.640-25.650(4329-4331) BasePeak:149.00(2099563)  
BG Mode:Calc. from Peak Group 1 - Event 1 Q3 Scan



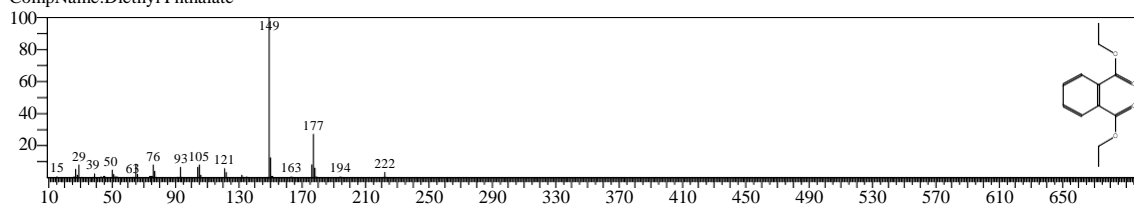
Hit#:1 Entry:85302 Library:NIST14.lib  
SI:95 Formula:C12H14O4 CAS:84-66-2 MolWeight:222 RetIndex:1639  
CompName:Diethyl Phthalate



Hit#:2 Entry:85305 Library:NIST14.lib  
SI:95 Formula:C12H14O4 CAS:84-66-2 MolWeight:222 RetIndex:1639  
CompName:Diethyl Phthalate

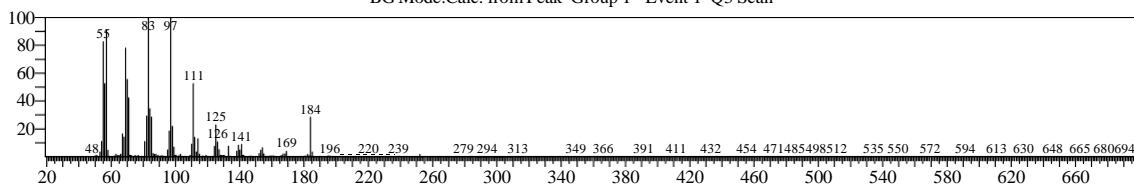


Hit#:3 Entry:85306 Library:NIST14.lib  
SI:95 Formula:C12H14O4 CAS:84-66-2 MolWeight:222 RetIndex:1639  
CompName:Diethyl Phthalate

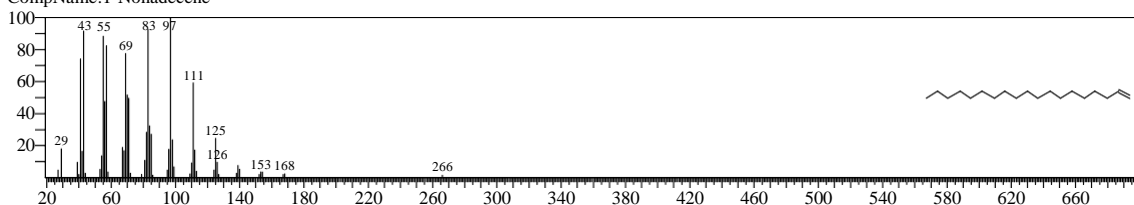


&lt;&lt; Target &gt;&gt;

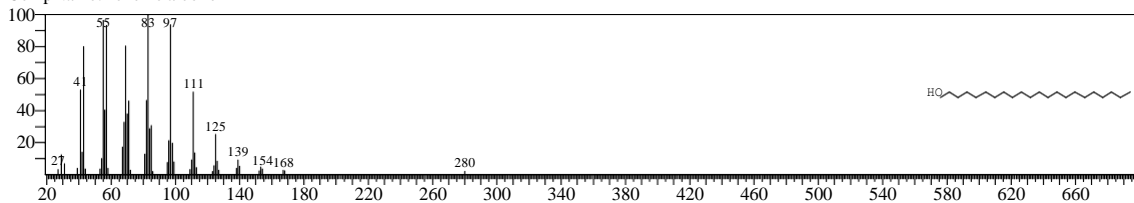
Line#:2 R.Time:30.965(Scan#:5394) MassPeaks:367  
 RawMode:Averaged 30.960-30.970(5393-5395) BasePeak:83.10(201980)  
 BG Mode:Calc. from Peak Group 1 - Event 1 Q3 Scan



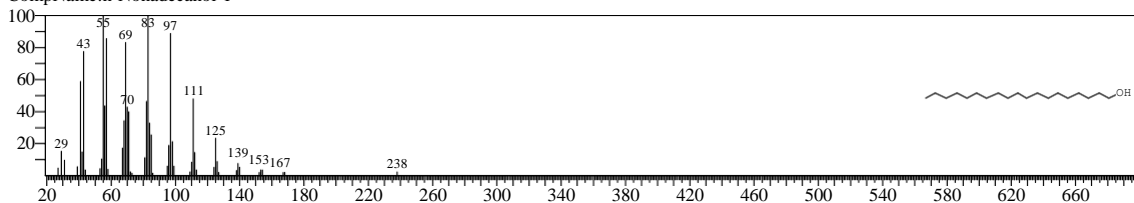
Hit#:1 Entry:126962 Library:NIST14.lib  
 SI:94 Formula:C19H38 CAS:18435-45-5 MolWeight:266 RetIndex:1900  
 CompName:1-Nonadecene



Hit#:2 Entry:184717 Library:NIST14.lib  
 SI:93 Formula:C22H46O CAS:661-19-8 MolWeight:326 RetIndex:2451  
 CompName:Behenic alcohol

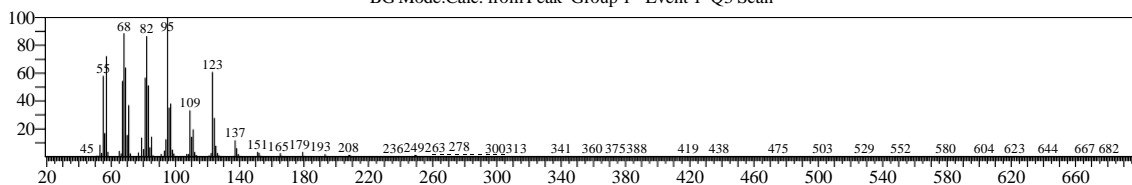


Hit#:3 Entry:144494 Library:NIST14.lib  
 SI:93 Formula:C19H40O CAS:1454-84-8 MolWeight:284 RetIndex:2153  
 CompName:n-Nonadecanol-1

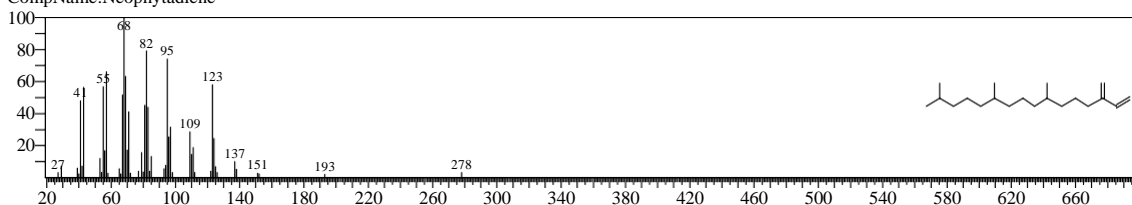


&lt;&lt; Target &gt;&gt;

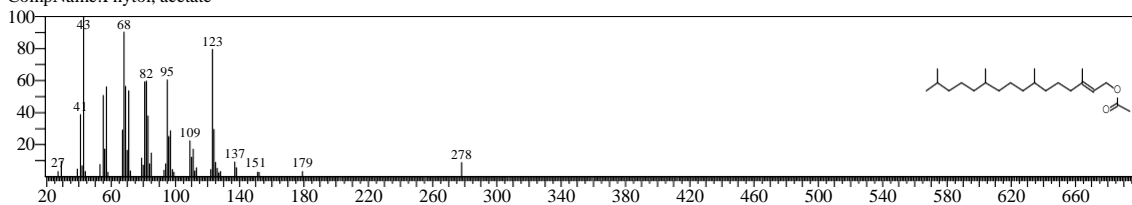
Line#:3 R.Time:31.905(Scan#:5582) MassPeaks:367  
 RawMode:Averaged 31.900-31.910(5581-5583) BasePeak:95.10(1403218)  
 BG Mode:Calc. from Peak Group 1 - Event 1 Q3 Scan



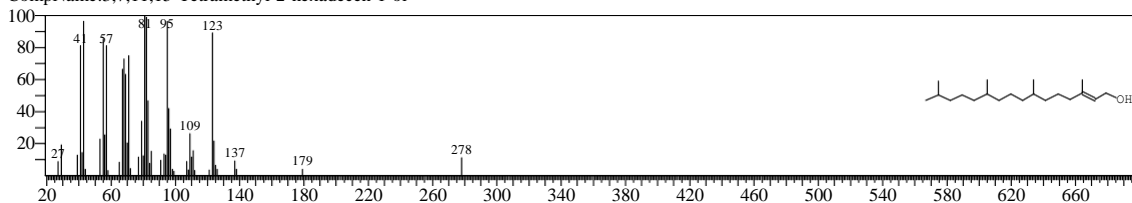
Hit#:1 Entry:138602 Library:NIST14.lib  
 SI:96 Formula:C20H38 CAS:504-96-1 MolWeight:278 RetIndex:0  
 CompName:Neophytadiene



Hit#:2 Entry:195632 Library:NIST14.lib  
 SI:93 Formula:C22H42O2 CAS:0-00-0 MolWeight:338 RetIndex:2168  
 CompName:Phytol, acetate

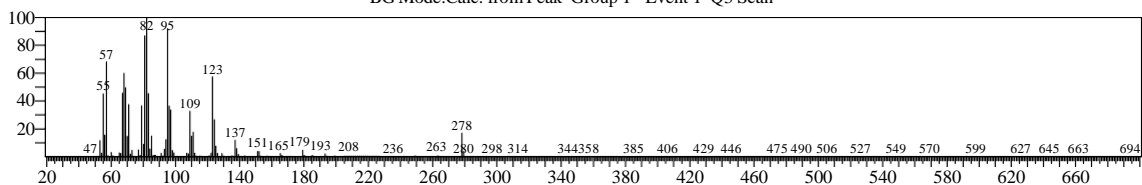


Hit#:3 Entry:155915 Library:NIST14.lib  
 SI:92 Formula:C20H40O CAS:102608-53-7 MolWeight:296 RetIndex:2045  
 CompName:3,7,11,15-Tetramethyl-2-hexadecen-1-ol

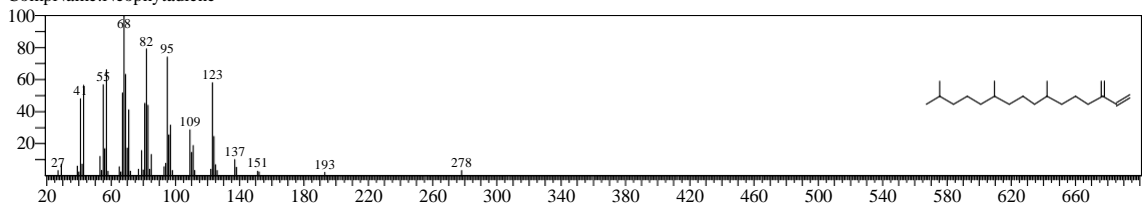


&lt;&lt; Target &gt;&gt;

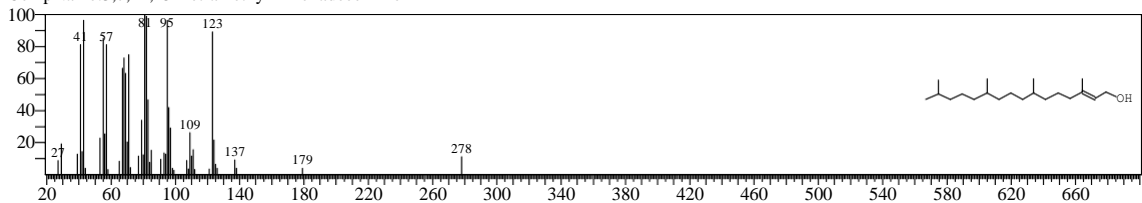
Line#:4 R.Time:32.780(Scan#:5757) MassPeaks:389  
 RawMode:Averaged 32.775-32.785(5756-5758) BasePeak:82.10(639763)  
 BG Mode:Calc. from Peak Group 1 - Event 1 Q3 Scan



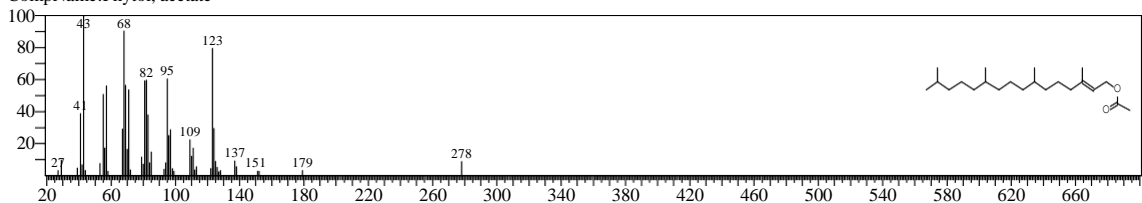
Hit#:1 Entry:138602 Library:NIST14.lib  
 SI:92 Formula:C20H38 CAS:504-96-1 MolWeight:278 RetIndex:0  
 CompName:Neophytadiene



Hit#:2 Entry:155915 Library:NIST14.lib  
 SI:92 Formula:C20H40O CAS:102608-53-7 MolWeight:296 RetIndex:2045  
 CompName:3,7,11,15-Tetramethyl-2-hexadecen-1-ol

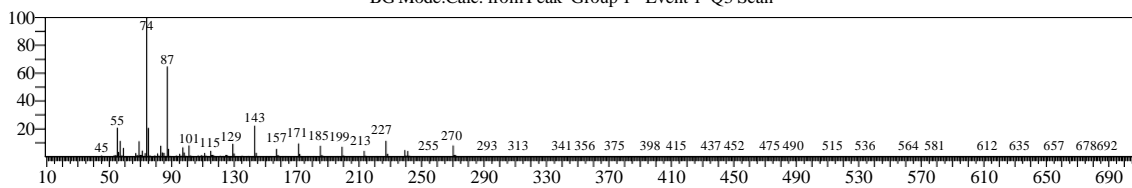


Hit#:3 Entry:195632 Library:NIST14.lib  
 SI:90 Formula:C22H42O2 CAS:0-00-0 MolWeight:338 RetIndex:2168  
 CompName:Phytol, acetate

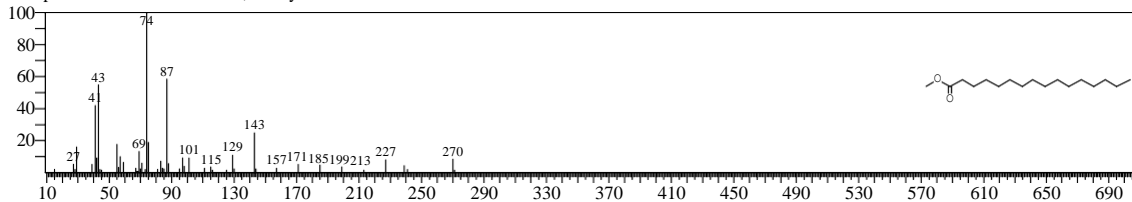


&lt;&lt; Target &gt;&gt;

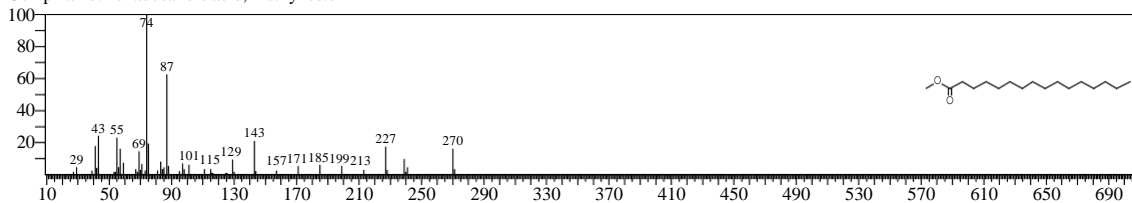
Line#:5 R.Time:33.755(Scan#:5952) MassPeaks:402  
RawMode:Averaged 33.750-33.760(5951-5953) BasePeak:74.05(1378954)  
BG Mode:Calc. from Peak Group 1 - Event 1 Q3 Scan



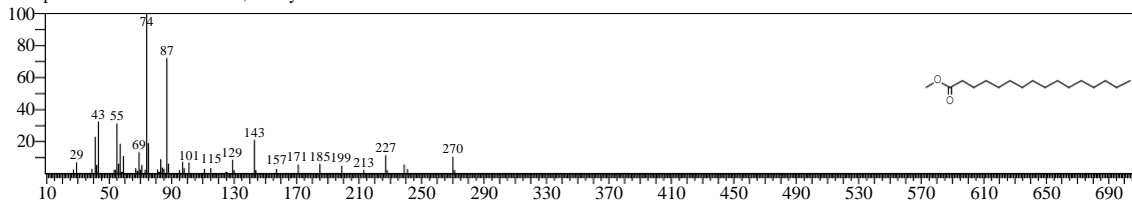
Hit#:1 Entry:130897 Library:NIST14.lib  
SI:95 Formula:C17H34O2 CAS:112-39-0 MolWeight:270 RetIndex:1878  
CompName:Hexadecanoic acid, methyl ester



Hit#:2 Entry:130900 Library:NIST14.lib  
SI:95 Formula:C17H34O2 CAS:112-39-0 MolWeight:270 RetIndex:1878  
CompName:Hexadecanoic acid, methyl ester

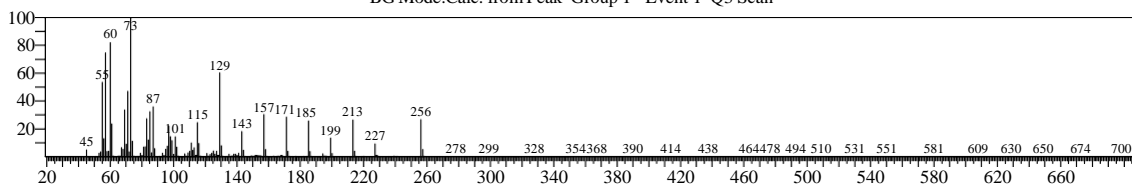


Hit#:3 Entry:130894 Library:NIST14.lib  
SI:95 Formula:C17H34O2 CAS:112-39-0 MolWeight:270 RetIndex:1878  
CompName:Hexadecanoic acid, methyl ester

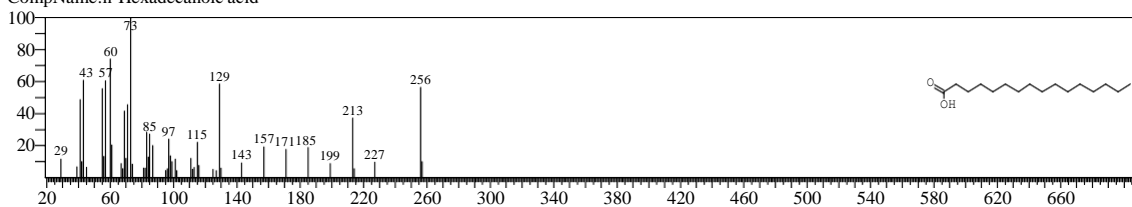


&lt;&lt; Target &gt;&gt;

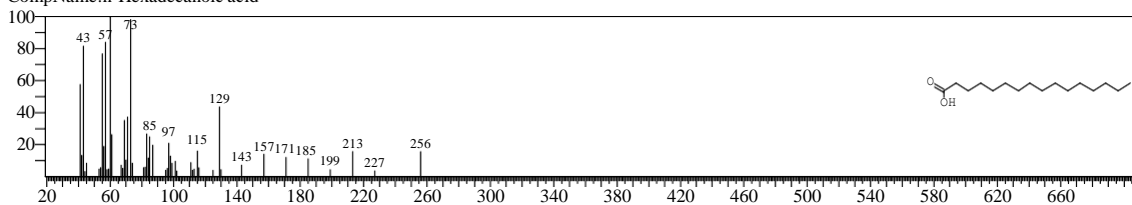
Line#:6 R.Time:35.090(Scan#:6219) MassPeaks:474  
 RawMode:Averaged 35.085-35.095(6218-6220) BasePeak:73.00(2610261)  
 BG Mode:Calc. from Peak Group 1 - Event 1 Q3 Scan



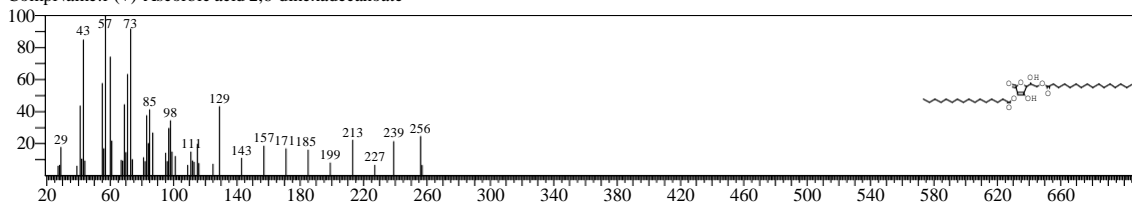
Hit#:1 Entry:117567 Library:NIST14.lib  
 SI:94 Formula:C16H32O2 CAS:57-10-3 MolWeight:256 RetIndex:1968  
 CompName:n-Hexadecanoic acid



Hit#:2 Entry:117566 Library:NIST14.lib  
 SI:91 Formula:C16H32O2 CAS:57-10-3 MolWeight:256 RetIndex:1968  
 CompName:n-Hexadecanoic acid

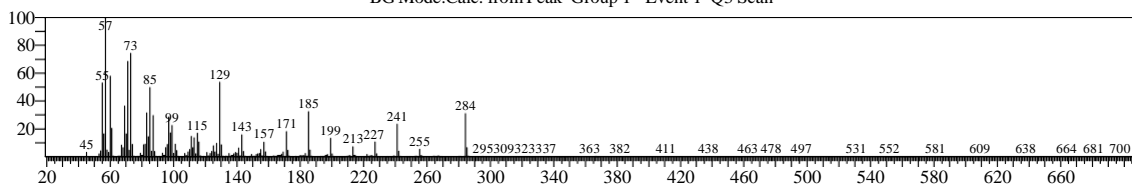


Hit#:3 Entry:274388 Library:NIST14.lib  
 SI:90 Formula:C38H68O8 CAS:28474-90-0 MolWeight:652 RetIndex:4765  
 CompName:l-(+)-Ascorbic acid 2,6-dihexadecanoate

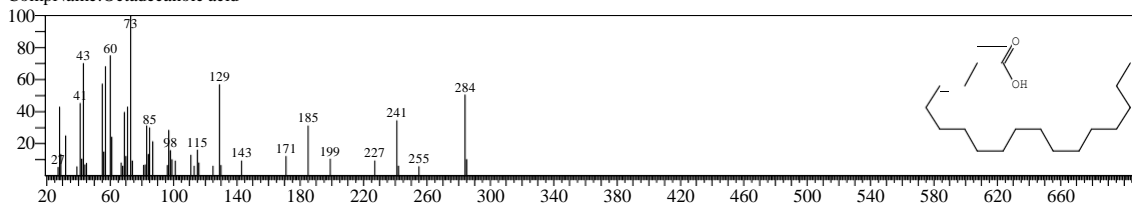


&lt;&lt; Target &gt;&gt;

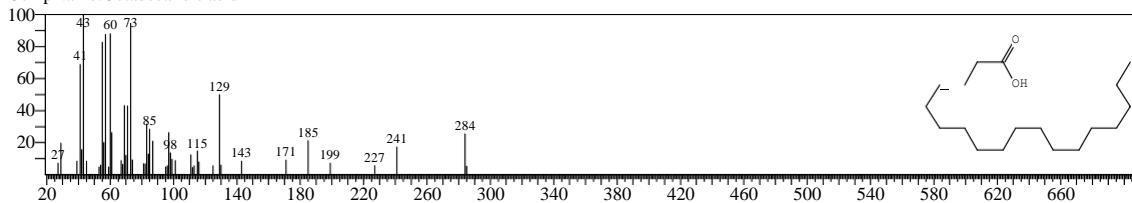
Line#:7 R.Time:38.755(Scan#:6952) MassPeaks:480  
RawMode:Averaged 38.750-38.760(6951-6953) BasePeak:57.05(2451415)  
BG Mode:Calc. from Peak Group 1 - Event 1 Q3 Scan



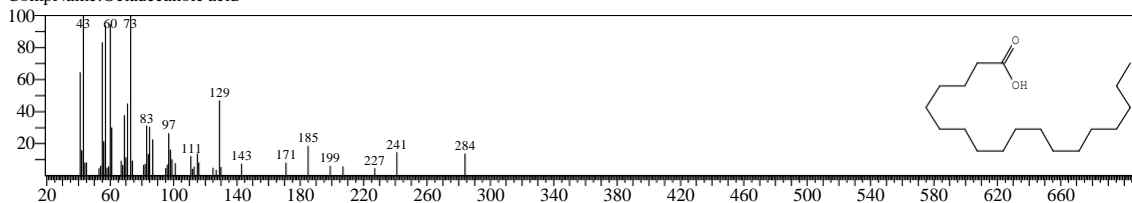
Hit#:1 Entry:144389 Library:NIST14.lib  
SI:90 Formula:C18H36O2 CAS:57-11-4 MolWeight:284 RetIndex:2167  
CompName:Octadecanoic acid



Hit#:2 Entry:144385 Library:NIST14.lib  
SI:90 Formula:C18H36O2 CAS:57-11-4 MolWeight:284 RetIndex:2167  
CompName:Octadecanoic acid

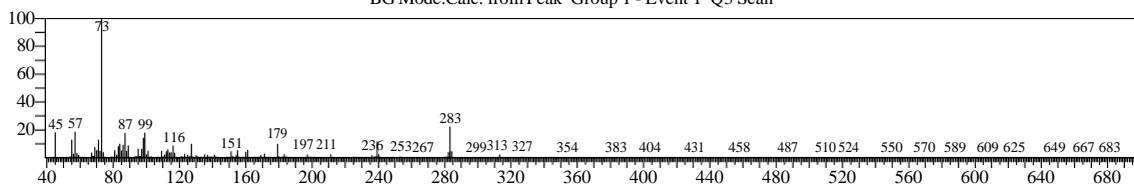


Hit#:3 Entry:144388 Library:NIST14.lib  
SI:89 Formula:C18H36O2 CAS:57-11-4 MolWeight:284 RetIndex:2167  
CompName:Octadecanoic acid





<< Target >>  
Line#:8 R.Time:42.140(Scan#:7629) MassPeaks:439  
RawMode:Averaged 42.135-42.145(7628-7630) BasePeak:73.05(3238213)  
BG Mode:Calc. from Peak Group 1 - Event 1 Q3 Scan



No hit compound