

Bioresistive random access memory with an in-memory computing function based on graphene quantum dots

Lu Wang, Yuting Wang, Jing Yang, Wenhao Li and Dianzhong Wen*

School of Electronic Engineering, Heilongjiang University, Harbin 150080, China

HLJ Province Key Laboratory of Senior-Education for Electronic Engineering,

Heilongjiang University, Harbin 150080, China

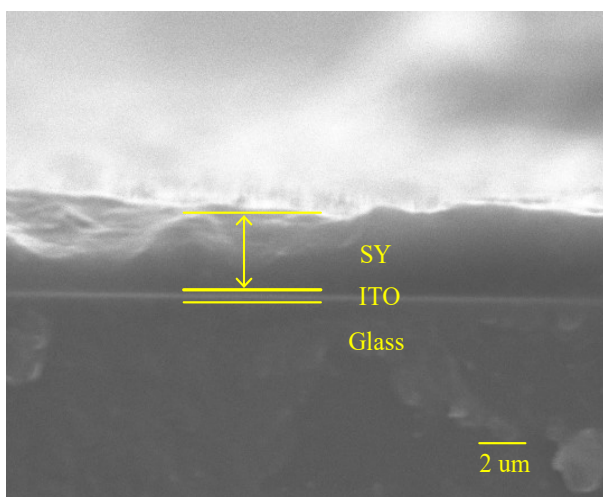


Fig. S1 SEM image of the SY film



Fig. S2 Secondary structure of soya protein by the prediction of PSIPRED online server¹: 7S globulin.

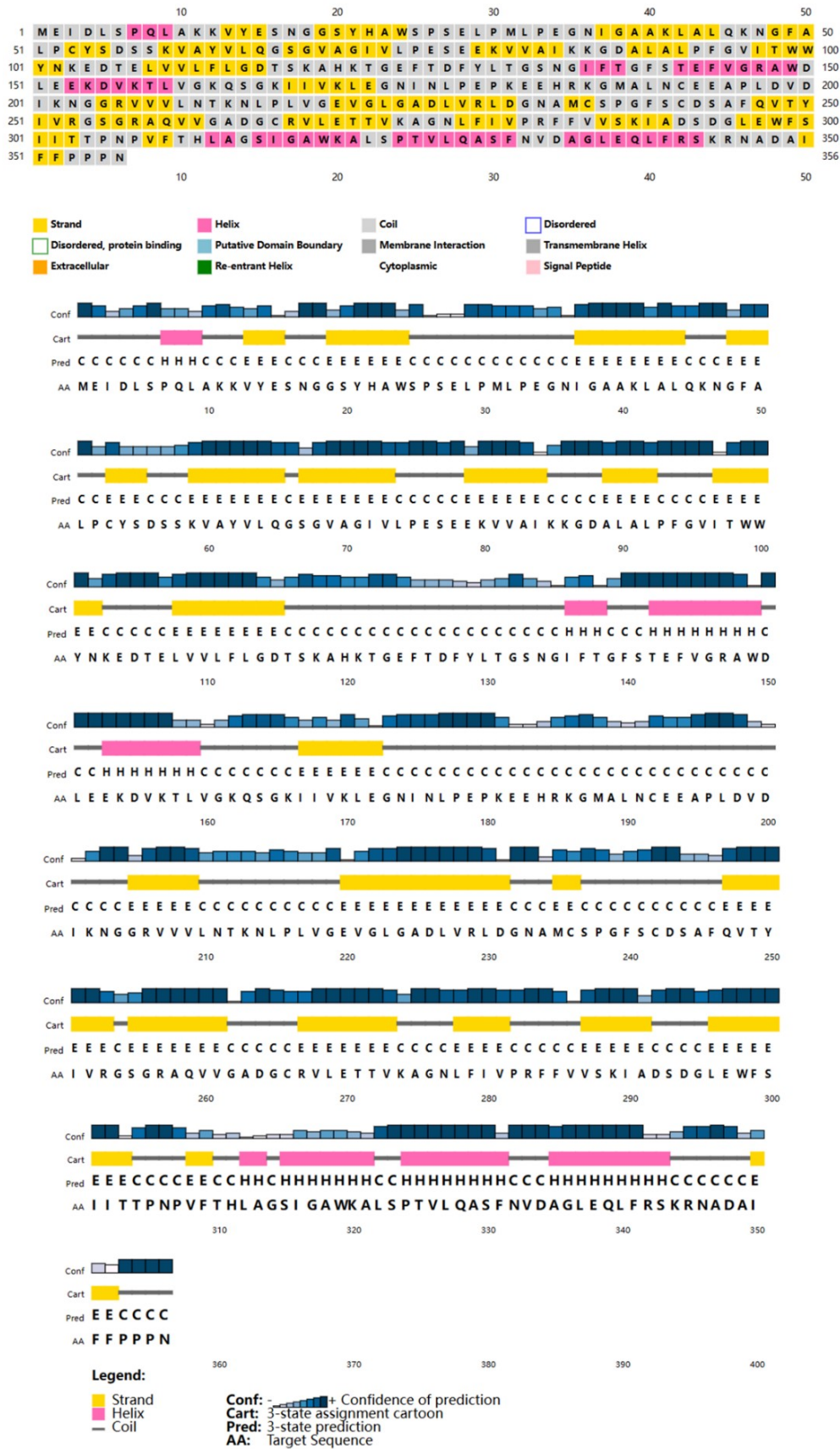


Fig. S3 Secondary structure of soya protein by the prediction of PSIPRED online server¹: 11S globulin.

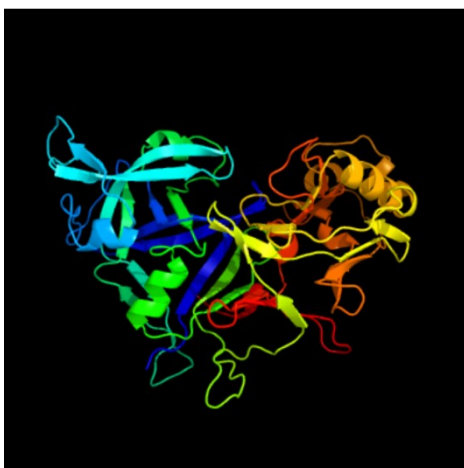


Fig. S4 Three-dimensional structure of soya protein predicted by the Phyre2 web server2: 7S globulin.

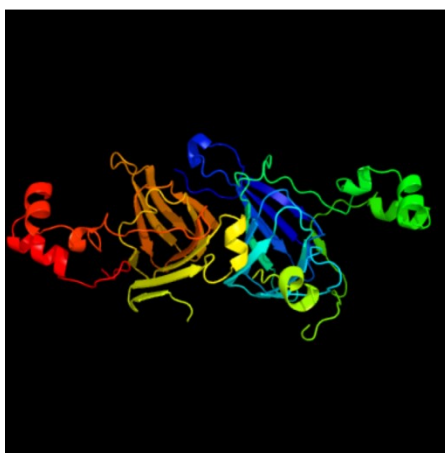


Fig. S5 Three-dimensional structure of soya protein predicted by the Phyre2 web server2: 11S globulin.