

1

Supplementary information

2 **Industrial basalt fiber loaded CuNi for continuous synthesis of DMC**

3 **from CO₂ and methanol**

4 **Li Luo¹ · Yongdong Chen^{1*} · Jie Deng¹ · Yingying Wang² · Qiang Tang¹ · Mengyue Hou¹ ·**
5 **Zhiyue Zhang¹ and Shijian Lu^{3, 4}**

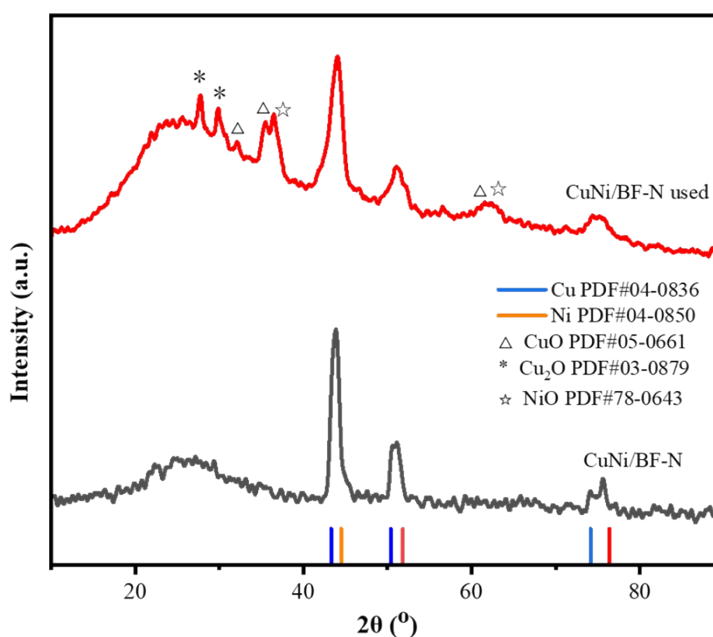
6 ¹College of Chemistry and Chemical Engineering, Southwest Petroleum University, 7
7 Chengdu 610500, People's Republic of China.

8 ²Key Laboratory of Optoelectronic Chemical Materials and Devices (Ministry of Education),
9 Jiangnan University, Wuhan, China.

10 ³Jiangsu Key Laboratory of Coal-based Greenhouse Gas Control and Utilization, China
11 University of Mining and Technology, Xuzhou, Jiangsu 221008, China.

12 ⁴Carbon Neutrality Institute, China University of Mining and Technology, Xuzhou, Jiangsu
13 221008, China

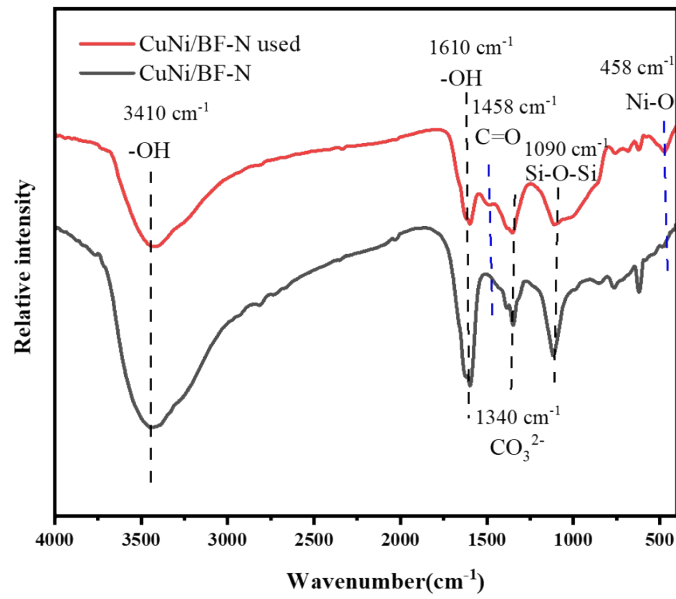
14 *Corresponding author. E-mail: yongdongchen@swpu.edu.cn



15

16

Fig S1. XRD patterns of fresh catalyst and used catalyst.



17

18

Fig S2 FTIR patterns of fresh catalyst and used catalyst.

19 Table S1 XPS fitting data for all catalysts.

Catalysts	Element (Atomic%)		
	Cu	Ni	Al
CuNi/BF-U	19.6	27.5	52.9
CuNi/BF-H	23.0	32.7	44.3
CuNi/BF-N	33.7	36.1	30.1

20

21 Table S2 ICP test results of all catalysts

Catalysts	Element (Atomic%)									
	Al	Ca	Si	Fe	K	Mg	Na	Ti	Cu	Ni
CuNi/BF-U	15.1	7.4	35.5	6.5	1.0	8.6	11.8	1.1	6.6	6.4
CuNi/BF-H	15.5	7.3	36.9	6.0	1.1	8.3	8.7	1.1	7.9	7.3
CuNi/BF-N	15.0	7.2	30.5	6.5	1.0	8.1	14.5	1.1	8.4	7.7

22