

## Supporting Information

# Locally Implantable Nanofibre Meshes by Sustained Release of Temozolomide for Combined Thermo-chemotherapy to Treat Glioblastoma

Emiho Oe<sup>a,b</sup>, Nanami Fujisawa<sup>a,b</sup>, Lili Chen<sup>a</sup>, Koichiro Uto<sup>a</sup>, Yoshitaka Matsumoto<sup>c</sup>  
and Mitsuhiro Ebara<sup>\*a,b,d</sup>

<sup>a</sup> Research Center for Functional Materials, National Institute for Materials Science (NIMS), Tsukuba, Ibaraki 305-0044, Japan

<sup>b</sup> Graduate School of Pure and Applied Sciences, University of Tsukuba, Tsukuba, Ibaraki 305-8577, Japan

<sup>c</sup> Department of Radiation Oncology, University of Tsukuba Hospital, Tsukuba, Ibaraki 305-8576, Japan

<sup>d</sup> Graduate School of Advanced Engineering, Department of Materials Science and Technology, Tokyo University of Science, Katsushika-ku, Tokyo 125-8585, Japan

\* E-mail: [EBARA.Mitsuhiro@nims.go.jp](mailto:EBARA.Mitsuhiro@nims.go.jp)

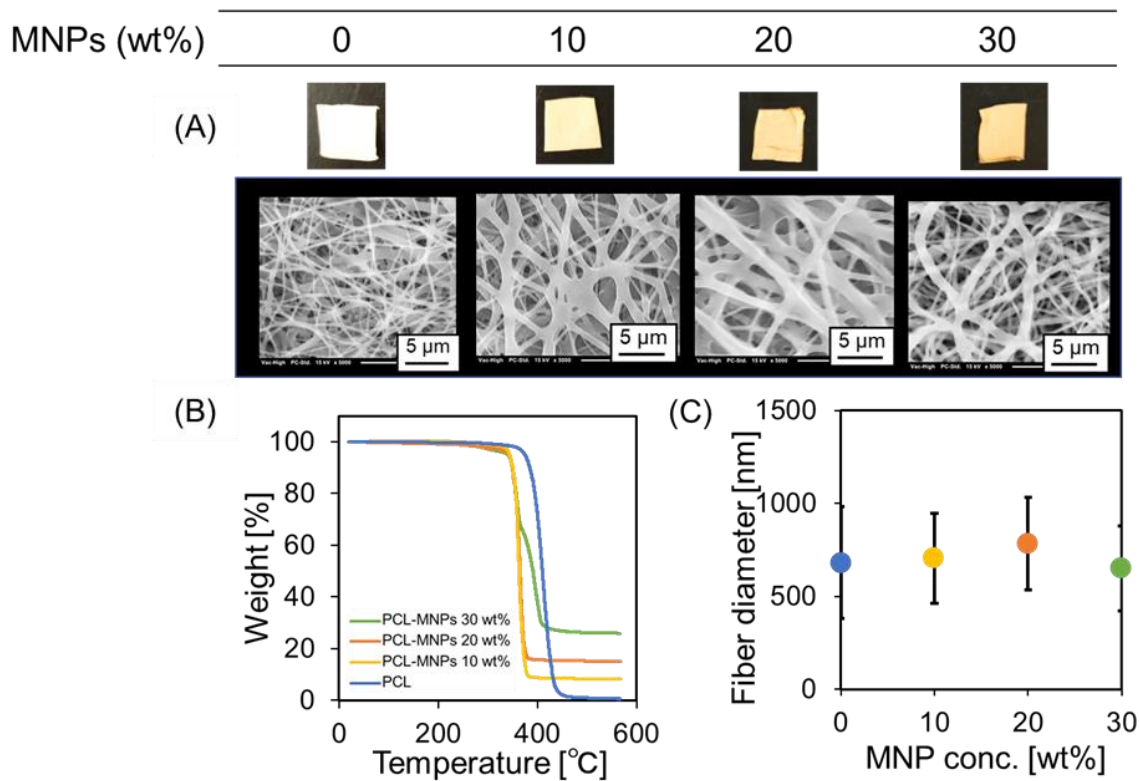
### Table of contents:

**Figure S1.** (A) SEM images, (B) TGA measurement results and (C) fibre diameter and of PCL-MNP 10, 20 and 30 wt%. nanofibre meshes.

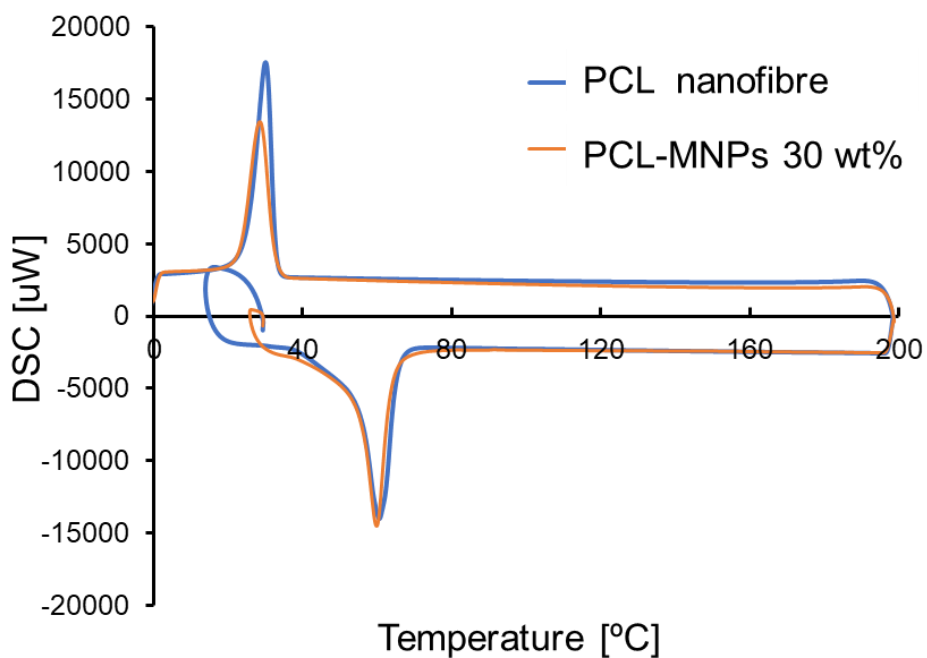
**Figure S2.** DSC measurement results of PCL nanofibre and PCL-MNP 30 wt% nanofibre meshes.

**Figure S3.** T98G cell viability via TMZ concentrations by MTT assay.

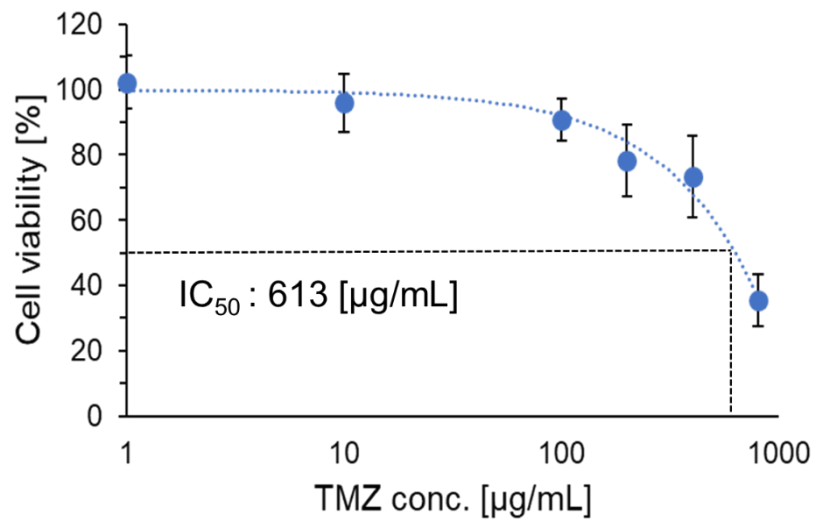
**Figure S4.** Viability of T98G cells treated with different (A) PCL molecular weights and (B) fibre diameters.



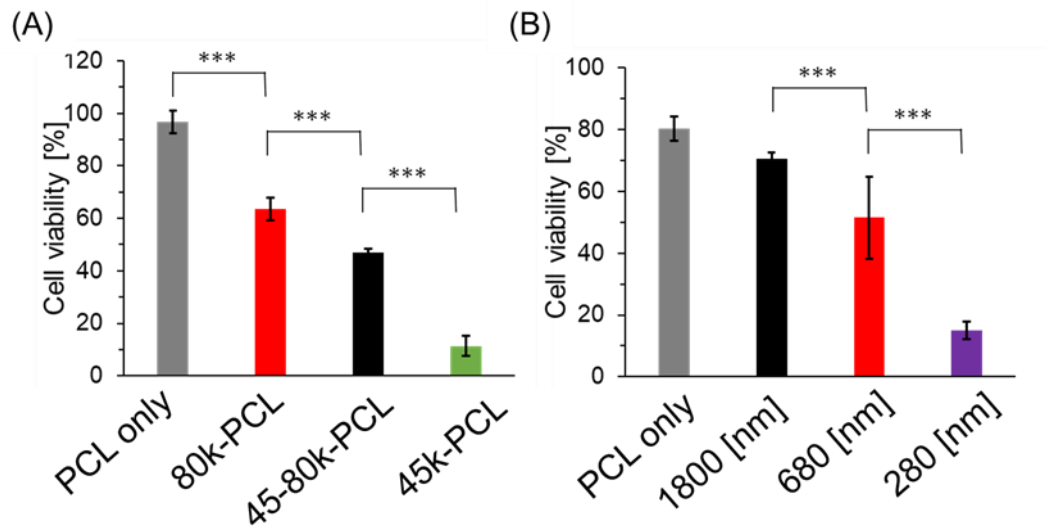
**Figure S1.** (A) SEM images, (B) TGA measurement results and (C) fibre diameter and of PCL-MNP 10, 20 and 30 wt%. nanofibre meshes.



**Figure S2.** DSC measurement results of PCL nanofiber and PCL-MNP 30 wt% nanofiber meshes.



**Figure S3.** T98G cell viability via TMZ concentrations by MTT assay.



**Figure S4.** Viability of T98G cells treated with different (A) PCL molecular weights and (B) fibre diameters.