

## Supporting Information

### **A NIR-II fluorescent probe for high contrast non-invasive imaging of tumor with a high EGFR-expression**

Hong, Zheng-Yuan<sup>a,\*</sup>; Liu, Hai-Ming<sup>b</sup>; Tang, Bo<sup>c</sup>; Wu, Min<sup>b,\*</sup>

<sup>a</sup> PET-CT/MRI Center, Molecular Imaging Center, Renmin Hospital of Wuhan University, Wuhan 430060, China.

<sup>b</sup> The State Key Laboratory Breeding Base of Basic Science of Stomatology (Hubei-MOST) & Key Laboratory of Oral Biomedicine Ministry of Education, School and Hospital of Stomatology, Wuhan University, 237 Luoyu Road, Wuhan 430079 China.

<sup>c</sup> College of Chemistry and Molecular Sciences, Wuhan University, Wuhan 430072, China.

#### **\*Corresponding Authors**

Wu, Min ([minwu@whu.edu.cn](mailto:minwu@whu.edu.cn)) and Hong, Zheng-Yuan ([hongzhengyuan@whu.edu.cn](mailto:hongzhengyuan@whu.edu.cn))

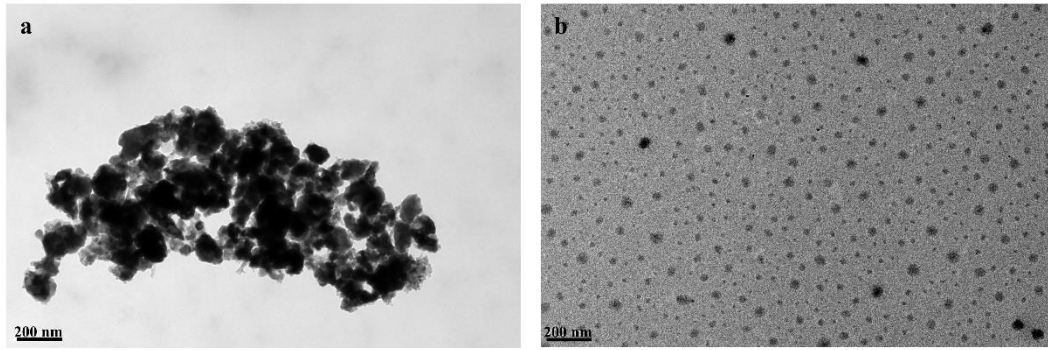


Figure S1. TEM images of CH1055-PEG1k-Mal (a) and CH1055-PEG1k-GE11 (b), scale bar represents 200 nm.

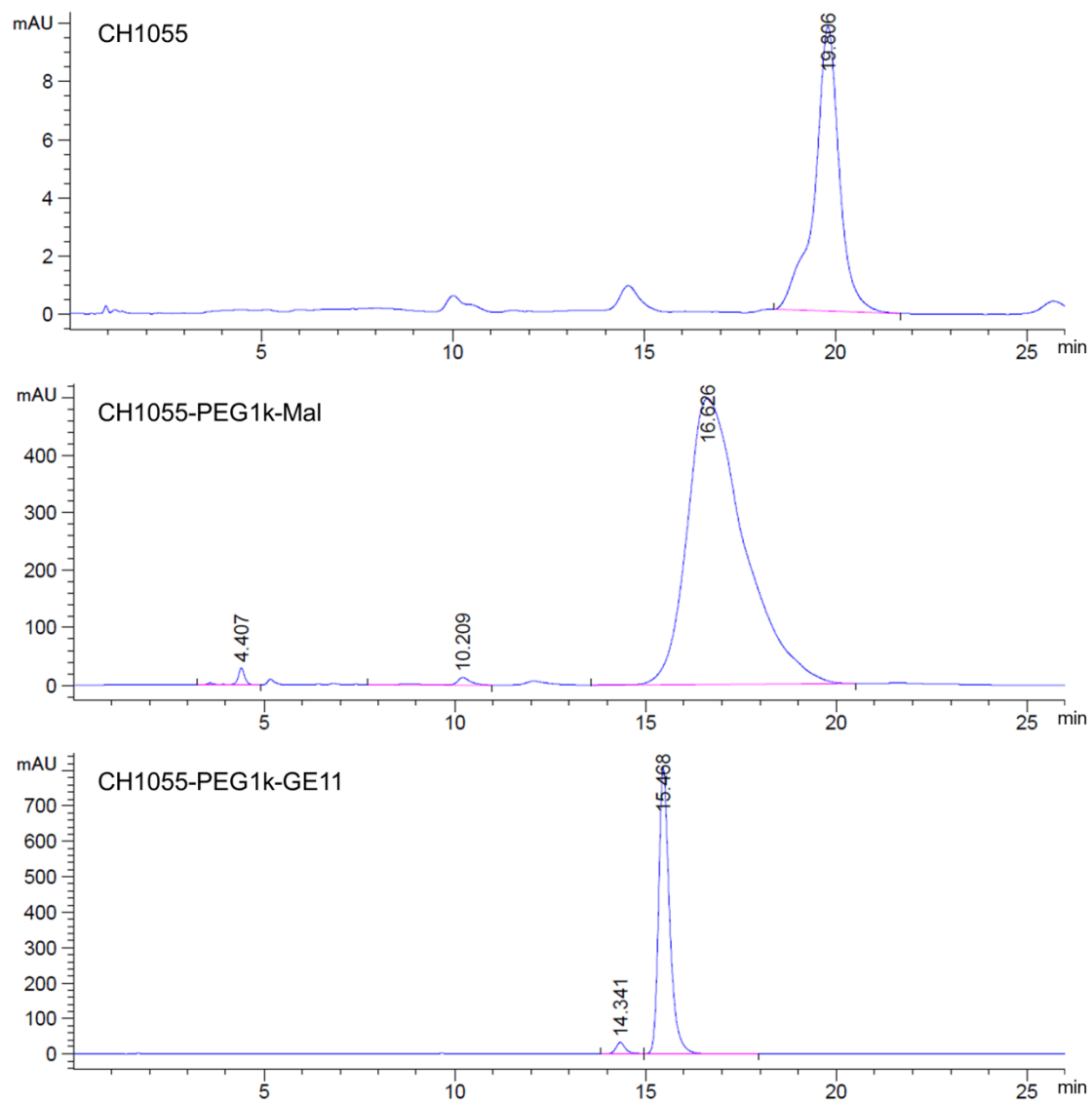


Figure S2. HPLC analysis of CH1055/CH1055-PEG1k-Mal/CH1055-PEG1k-GE11. The wavelength was 360 nm.