

Electronic Supplementary Material (ESM)

An amorphous zinc/copper double transition metal hydroxides for electrochemical simultaneous detection of dopamine, serotonin and melatonin

Shanshan Tang, Miao Liu, Wei Wang, Axin Liang, Fulai Zhang,
Aiqin Luo*

Key Laboratory of Molecular Medicine and Biotherapy, School of
Life Science, Beijing Institute of Technology, Beijing 100081,
China

* Corresponding Author Phone: +86 010 68915996

E-mail: aqluobit@163.com (A. Luo)

S1. Optimization of detection conditions

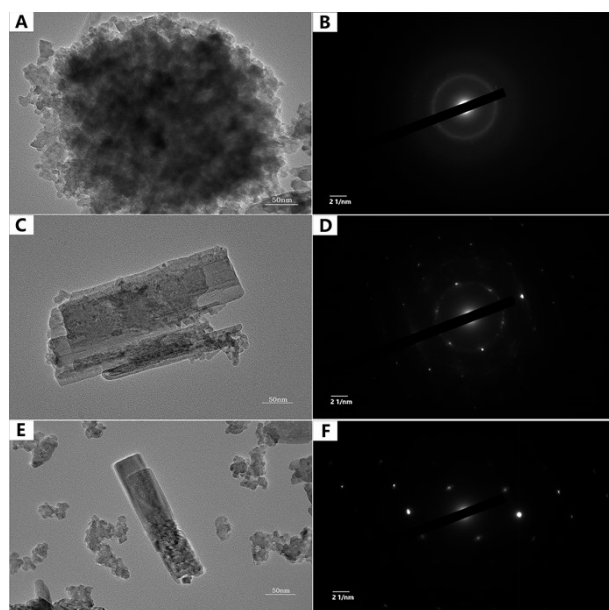


Fig. S1 TEM images and SAED patterns of ZnCu bimetallic hydroxides synthesized with different contents of Zn and Cu elements: 1:1(A, B), 1:2(C, D), 2:1(E, F).