

Carbonized polymer dots for the sensitive and selective analysis of chlortetracycline based on the aggregation induced emission

Tong Shao, Xiaoshuang Wang, Rentian Guan, Suyuan Zeng, Rui Li, Min Hong,

Qiaoli Yue*

School of Chemistry and Chemical Engineering, Shandong Provincial Key
Laboratory of Chemical Energy Storage and Novel Cell Technology, Liaocheng
University, Liaocheng 252059, China

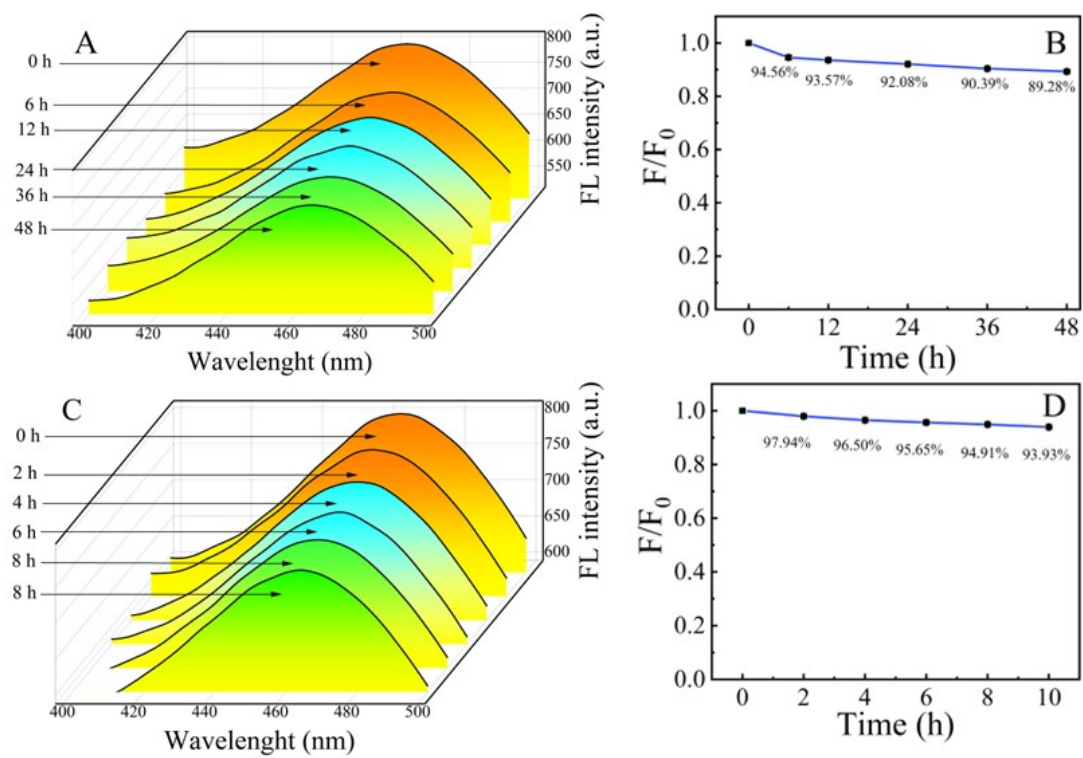


Fig. S1 The stability of CPDs at room temperature (A, B) and illumination with a LED lamp (C, D)

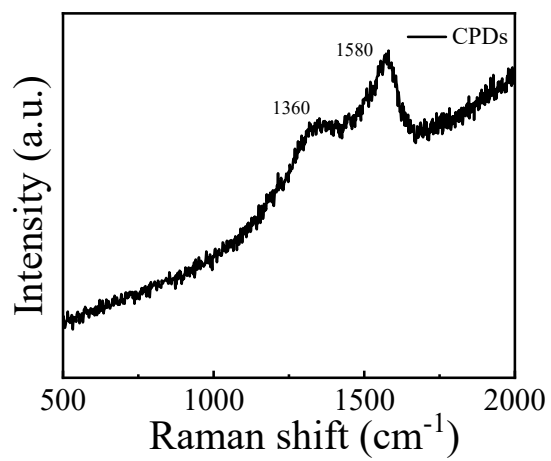


Fig. S2 Raman spectra of CPDs

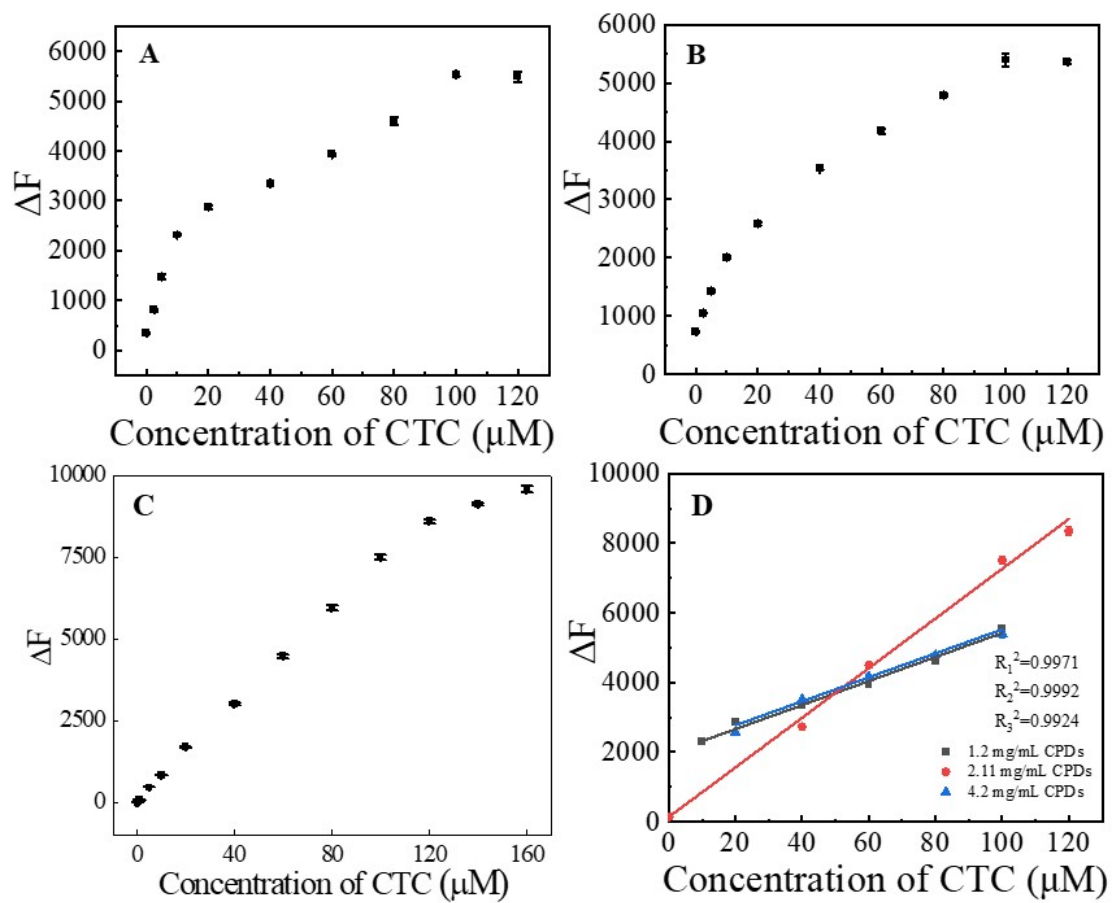


Fig. S3 The response between ΔF and concentration of CTC:

(A) 1.2 mg/mL CPDs; (B) 2.11 mg/mL; (C) 4.2mg/mL,

and corresponding linear relationship between ΔF and concentration of CTC (D)

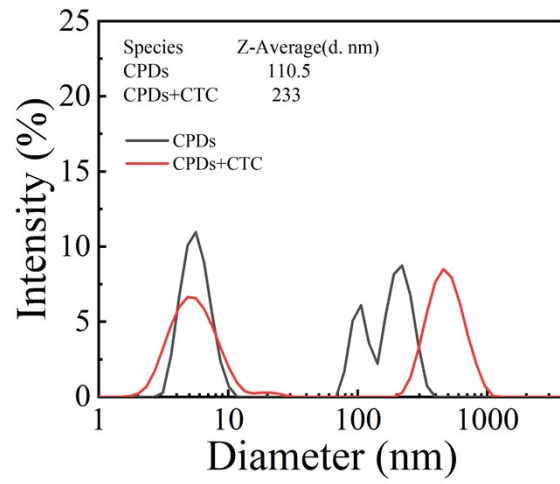


Fig. S4 DLS measurements for the size distribution of CPDs and CPDs+CTC

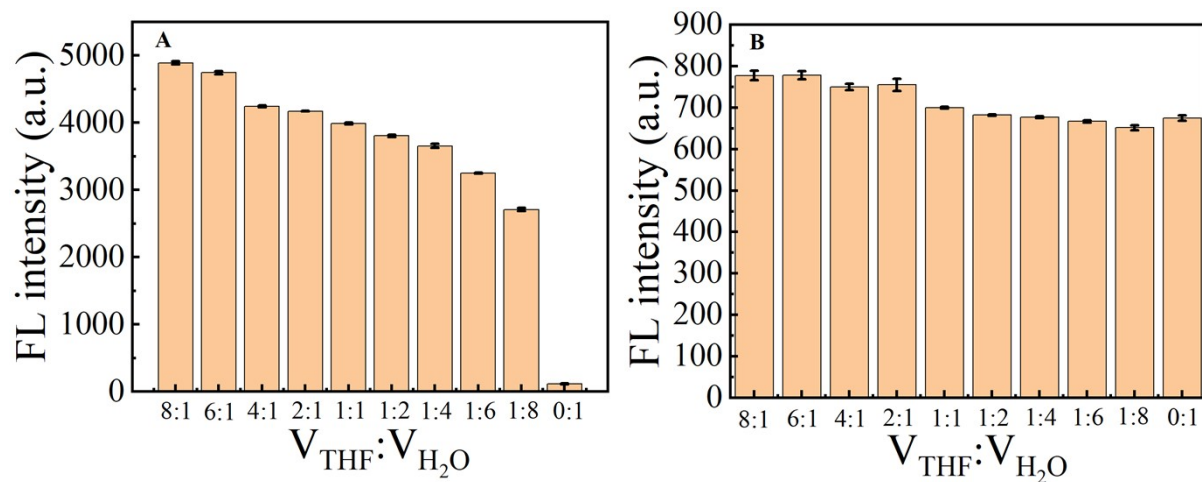


Fig. S5 Fluorescence intensity of CTC (A) and CPDs (B) in the solvent of THF and H₂O with different ratios

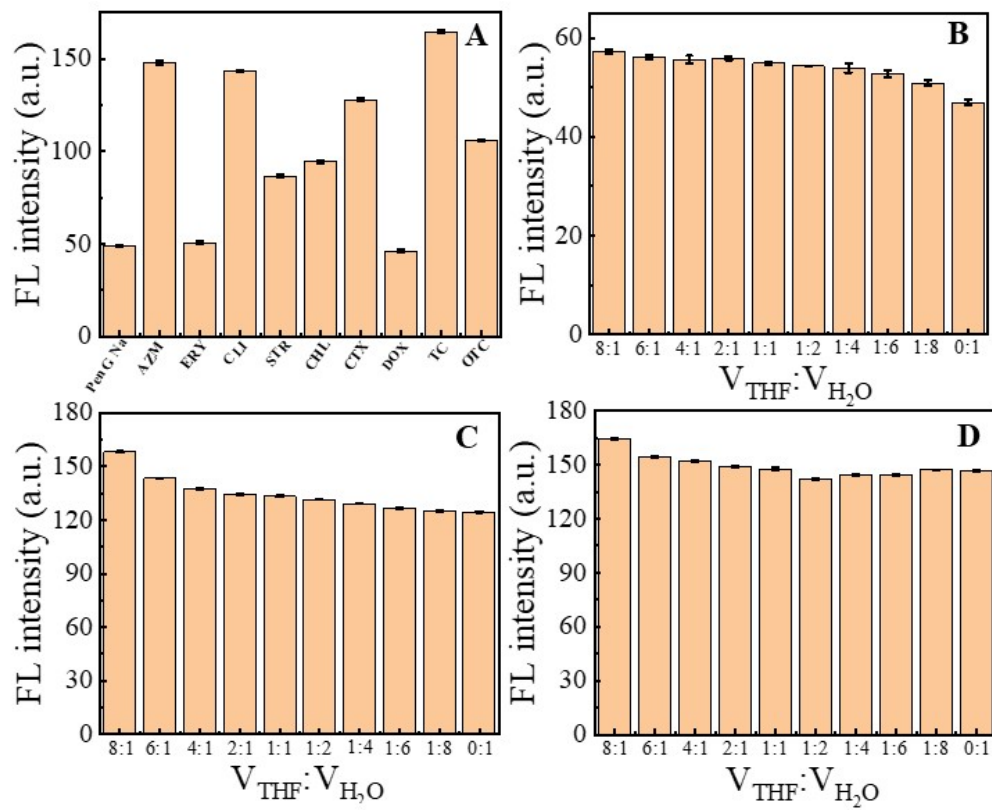


Fig. S6 Fluorescence intensity of other antibiotics (A), DOX (B), OTC (C) and TC (D)

in the solvent of THF and H₂O with different ratios

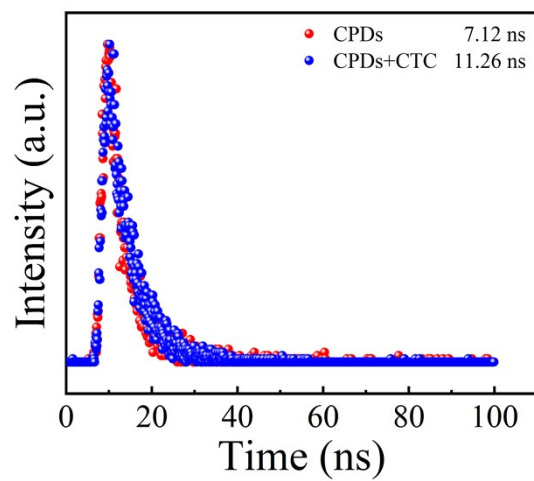


Fig. S7 Fluorescence decay of CPDs and CPDs+CTC

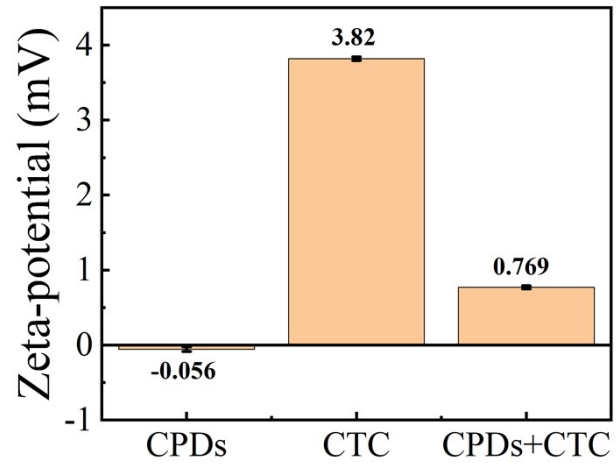


Fig. S8 Zeta potential of CPDs, CTC and CPDs+CTC

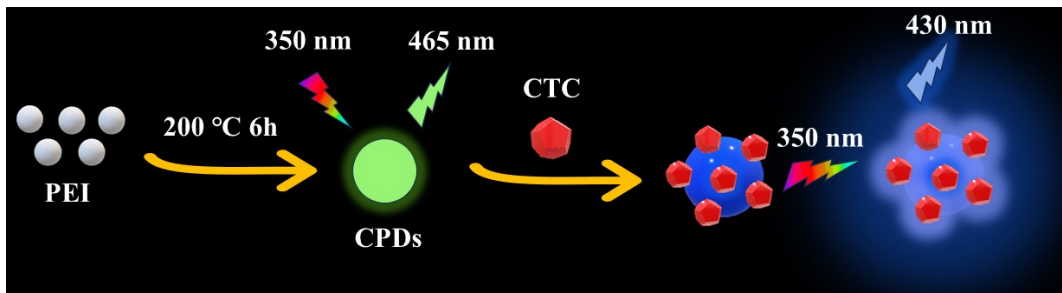


Fig. S9 Schematic illustration of possible reactions between CPDs and CTC