

## Supplementary Information

### ***In Vivo* Biodistribution and Tumor Uptake of [<sup>64</sup>Cu]-FAU Nanozeolite via Positron Emission Tomography Imaging**

Charly H elaine<sup>a</sup>, Abdallah Amedlous<sup>b</sup>, J er ome Toutain<sup>a</sup>, Carole Brunaud<sup>a</sup>, Oleg Lebedev<sup>c</sup>,  
Charlotte Marie<sup>d</sup>, Cyrille Alliot<sup>e,f</sup>, Myriam Bernaudin<sup>a</sup>, Ferid Haddad<sup>f,g</sup>, Svetlana Mintova<sup>\*†b</sup>,  
Samuel Valable<sup>\*†a</sup>

<sup>a</sup>*Universit  de Caen Normandie, CNRS, Normandie Universit , ISTCT UMR6030, GIP CYCERON, F-14000 Caen, France.*

<sup>b</sup>*Universit  de Caen Normandie, ENSICAEN, CNRS, Normandie Universit , Laboratoire Catalyse et Spectrochimie (LCS), F-14050 Caen, France.*

<sup>c</sup>*Universit  de Caen Normandie, ENSICAEN, CNRS, Normandie Universit , Laboratoire de Cristallographie et Science des Mat riaux (CRISMAT), F-14050 Caen, France.*

<sup>d</sup>*UAR3408/US50, Universit  de Caen Normandie, CNRS, INSERM, CEA, GIP CYCERON, 14000 Caen, France.*

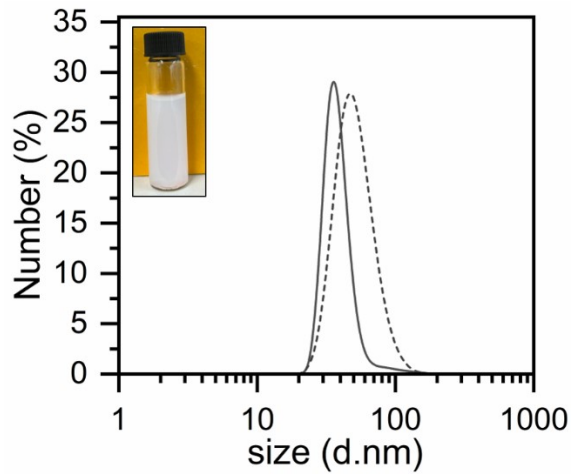
<sup>e</sup>*CRCI2NA, Inserm, CNRS, Nantes Universit , F-44007 Nantes Cedex 1, France.*

<sup>j</sup>*GIP ARRONAX, F-44800 Saint-Herblain, France.*

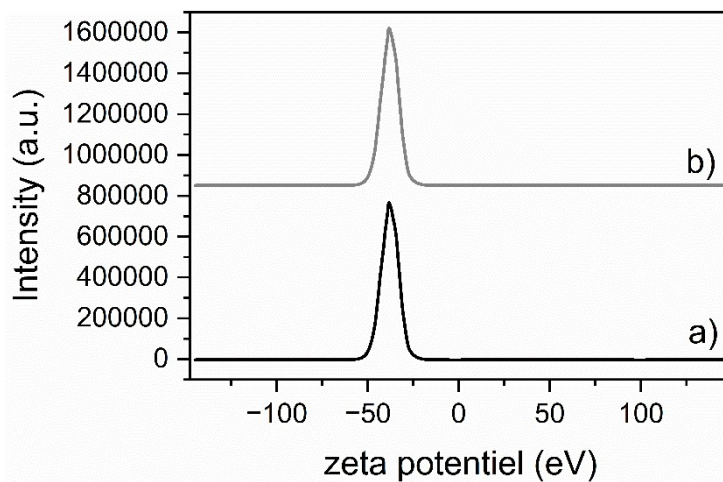
<sup>g</sup>*IMT Atlantique, Nantes Universit , CNRS, Subatech, F-44000 Nantes, France.*

† Equal contribution

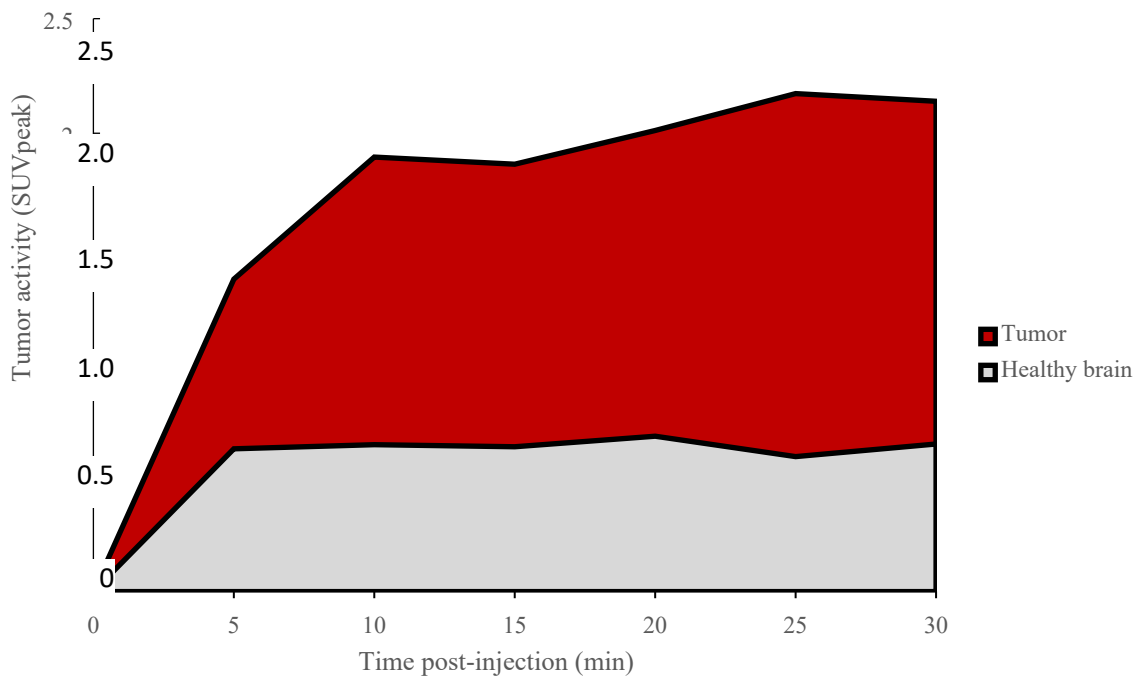
*Correspondence:* samuel.valable@cnrs.fr; svetlana.mintova@ensicaen.fr



**Supplementary figure 1.** DLS results of zeolite suspensions: Solid line represents Na-FAU before storage, and dashed line represents Na-FAU after storage for 3 months. Inset: Image of colloidal suspension of Na-FAU after storage for 3 months.



**Supplementary figure 2.** Zeta potential of a) Na-FAU before storage, and b) Na-FAU after storage for 3 months.



**Supplementary figure 3.** Time activity curve during the first 30 min in a representative rat bearing a U87-MG model in tumor and healthy brain regions.