

PSMA-targeted dendrimer as an efficient anticancer drug delivery vehicle for prostate cancer

Anubhav Dhull¹, Jing Wei^{2#}, Anunay James Pulukuri^{1#}, Anu Rani¹, Rishi Sharma¹, Nooshin Mesbahi¹, Hosog Yoon¹, Emily A. Savoy¹, Sylvia Xaivong Vi¹, Kenneth John Goody¹, Clifford E. Berkman¹, Boyang Jason Wu², Anjali Sharma^{1*}

¹*Department of Chemistry, College of Arts and Sciences, Washington State University, Pullman, WA, USA*

²*Department of Pharmaceutical Sciences, College of Pharmacy and Pharmaceutical Sciences, Washington State University, Spokane, WA, USA*

*Correspondence: Anjali Sharma, Department of Chemistry, Washington State University, Troy Hall, Rm 222, 1470 E. College Avenue, Pullman, WA 99164, USA.

E-mail: anjali.sharma@wsu.edu

These authors contributed equally.

Supplementary Figures: -

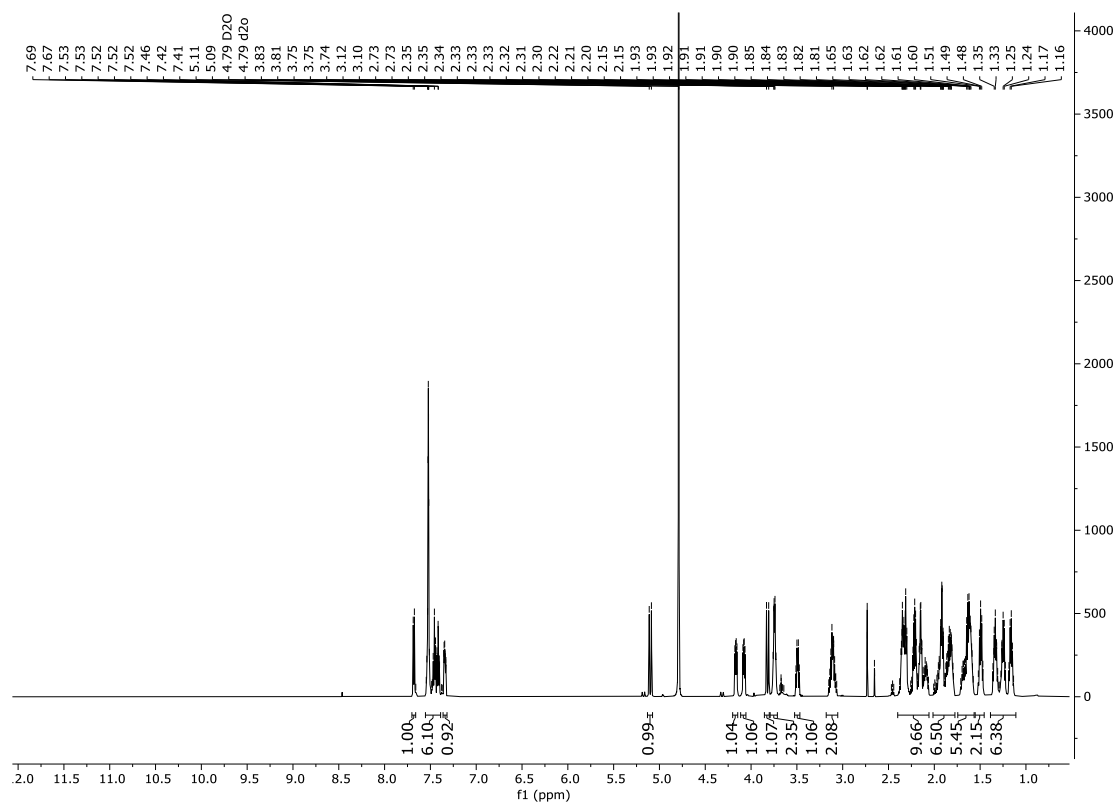


Figure S1. ^1H NMR of compound **3** in D_2O (600 MHz).

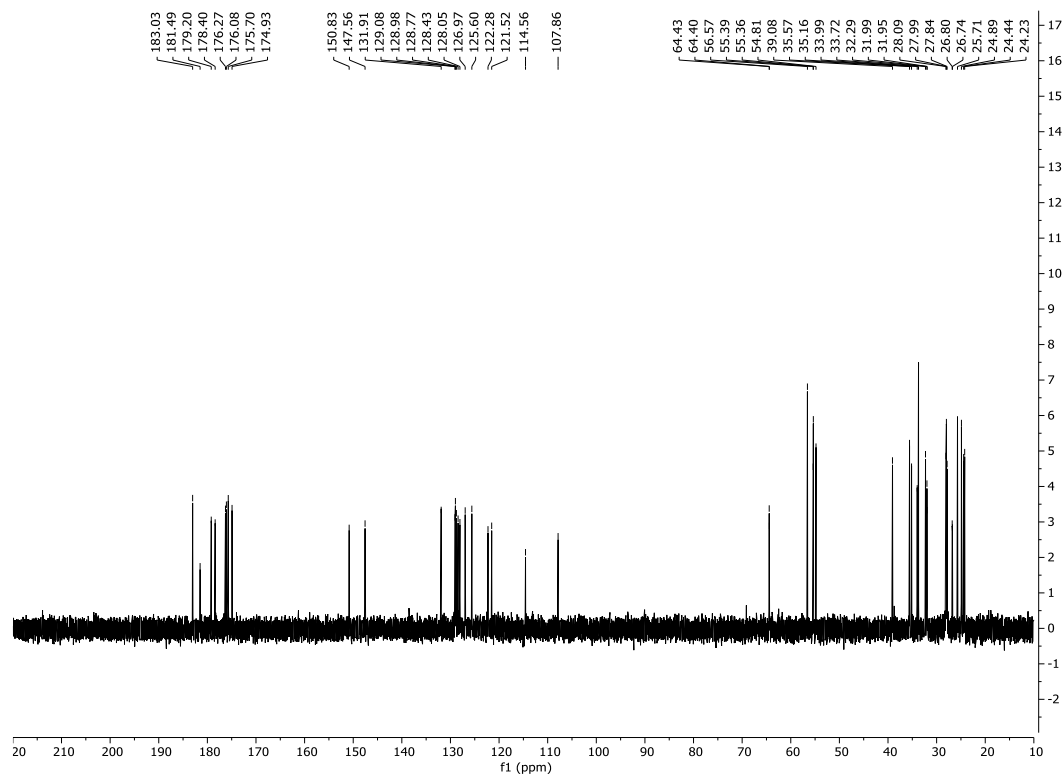


Figure S2. ^{13}C NMR of compound **3** in D_2O (101 MHz).

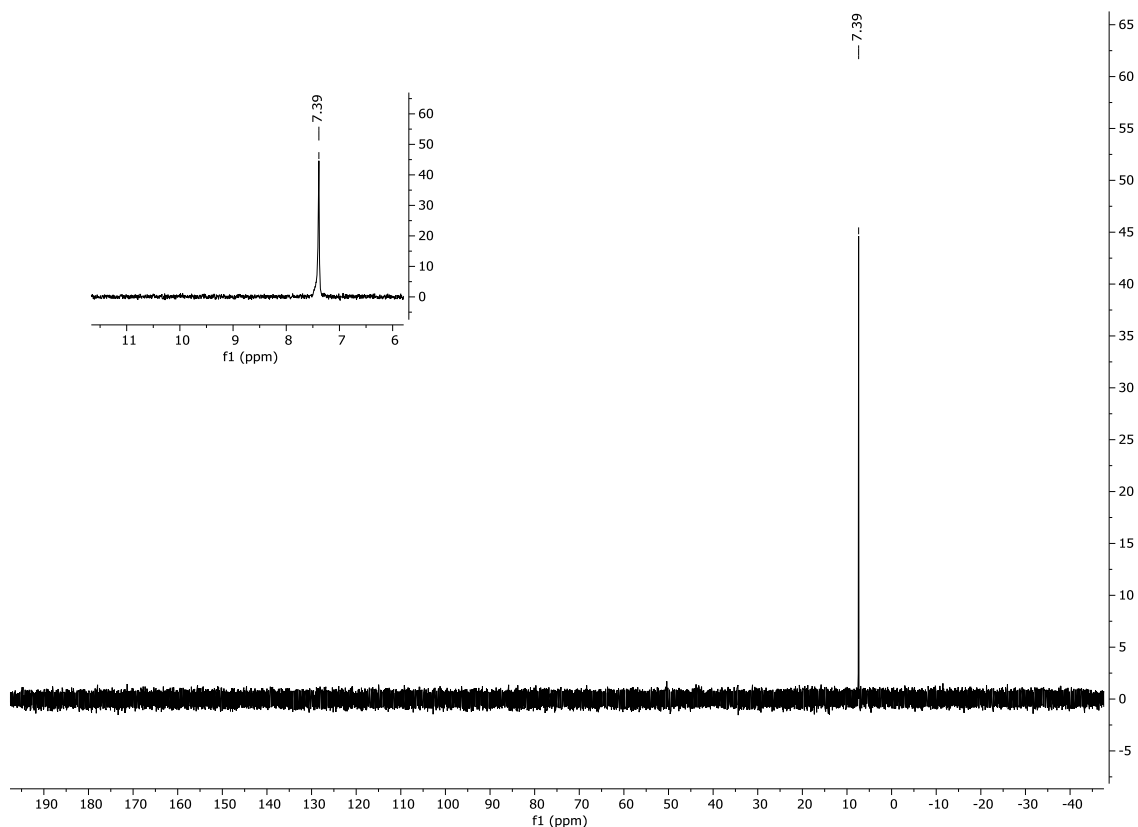


Figure S3. ^{31}P NMR of compound **3** in D_2O (162 MHz).

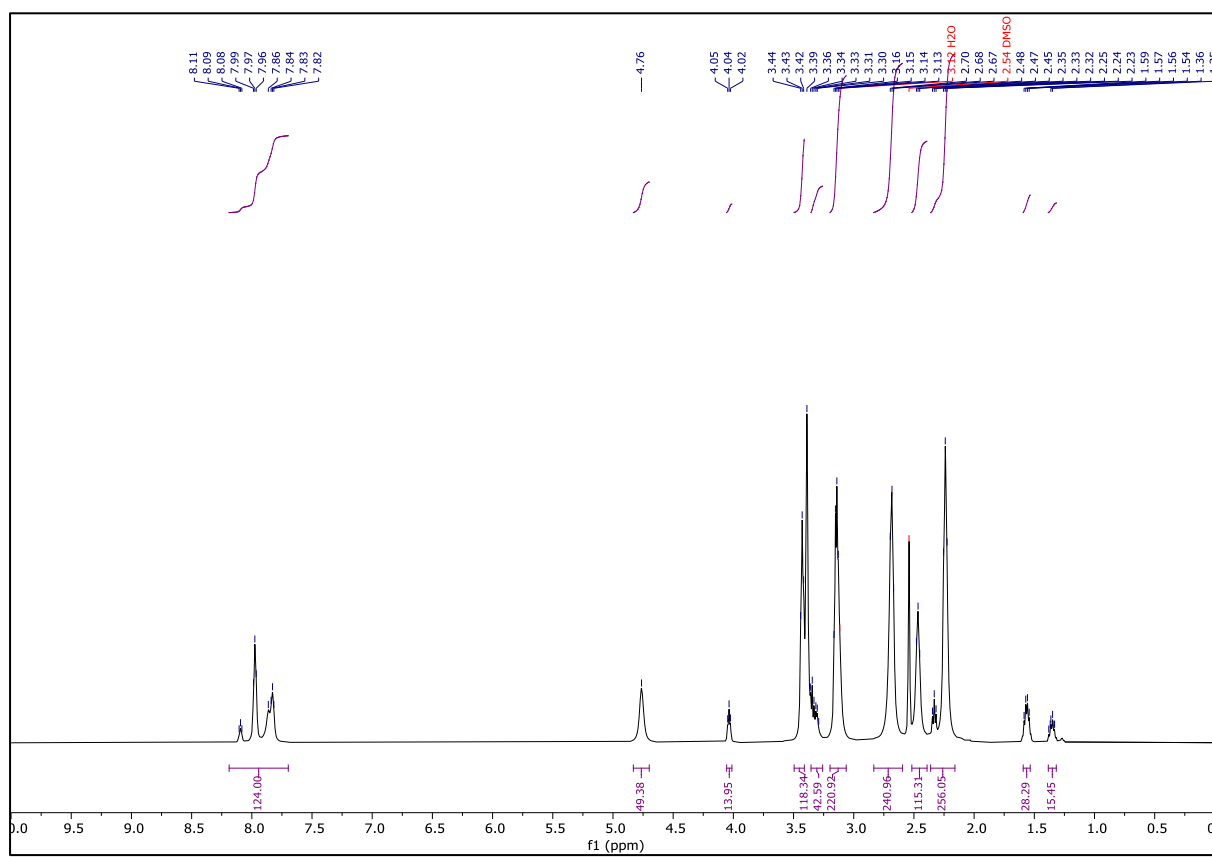


Figure S4. ^1H NMR of compound **5** in DMSO-d_6 (500 MHz).

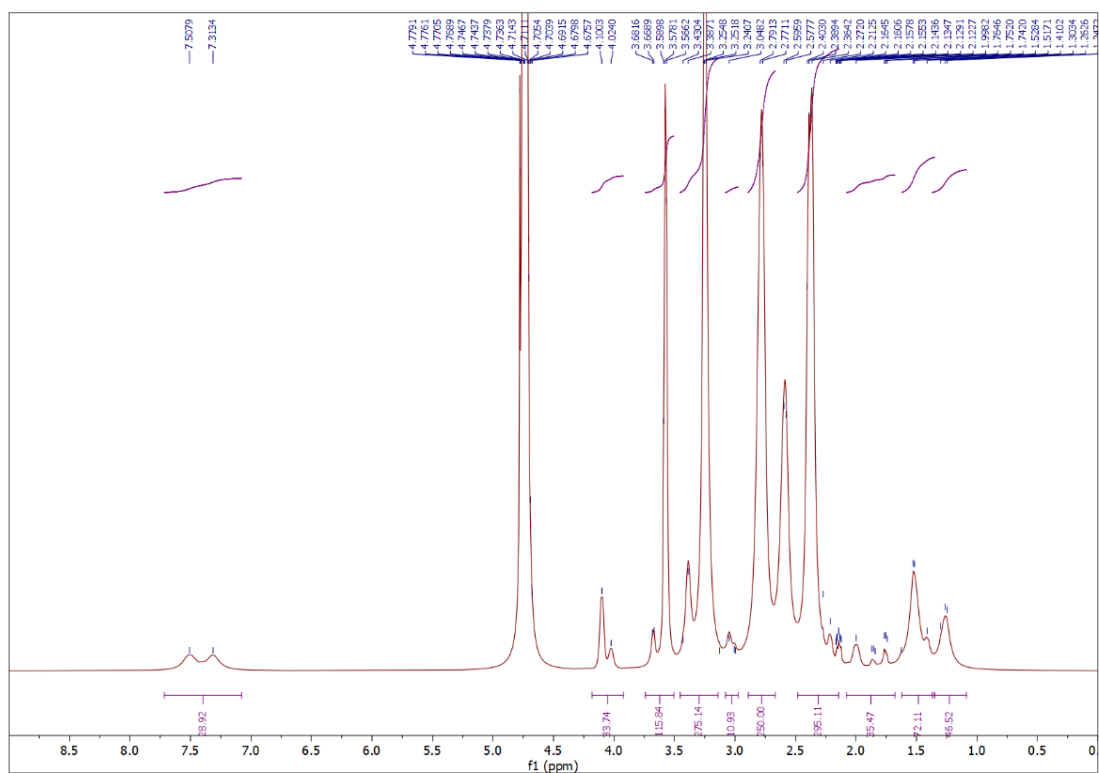


Figure S5. ^1H NMR of compound **6** in D_2O (500 MHz).

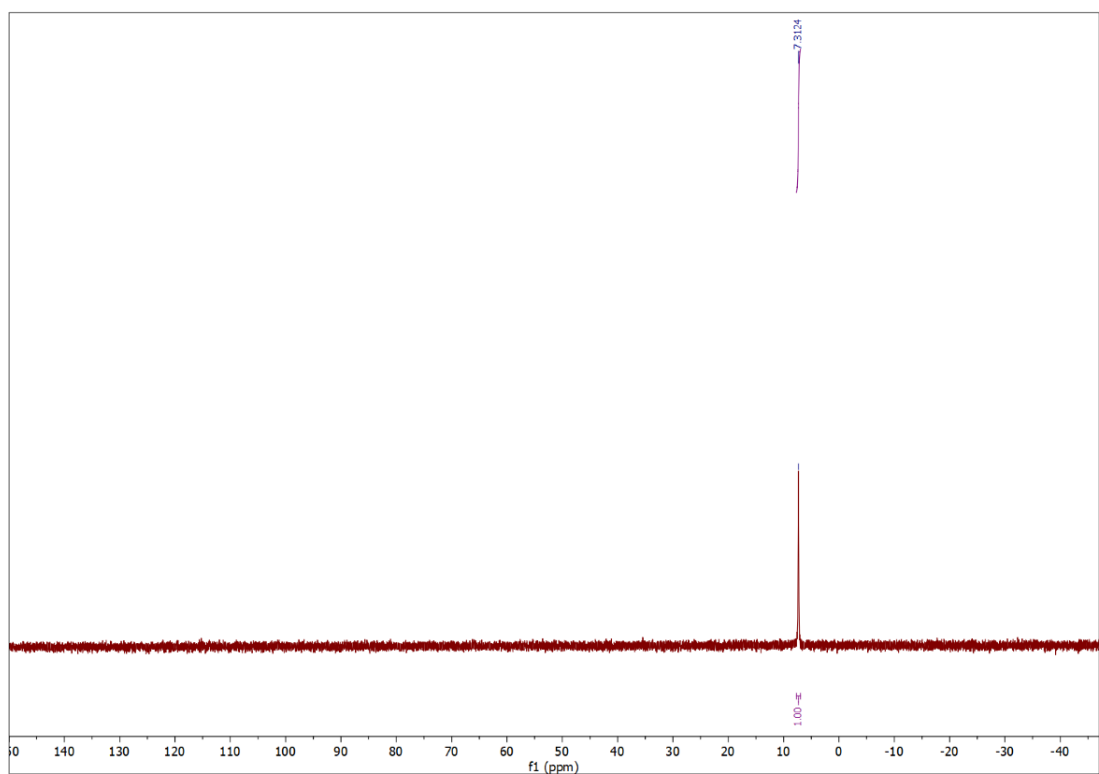


Figure S6. ^{31}P NMR of compound **6** in D_2O (202 MHz).

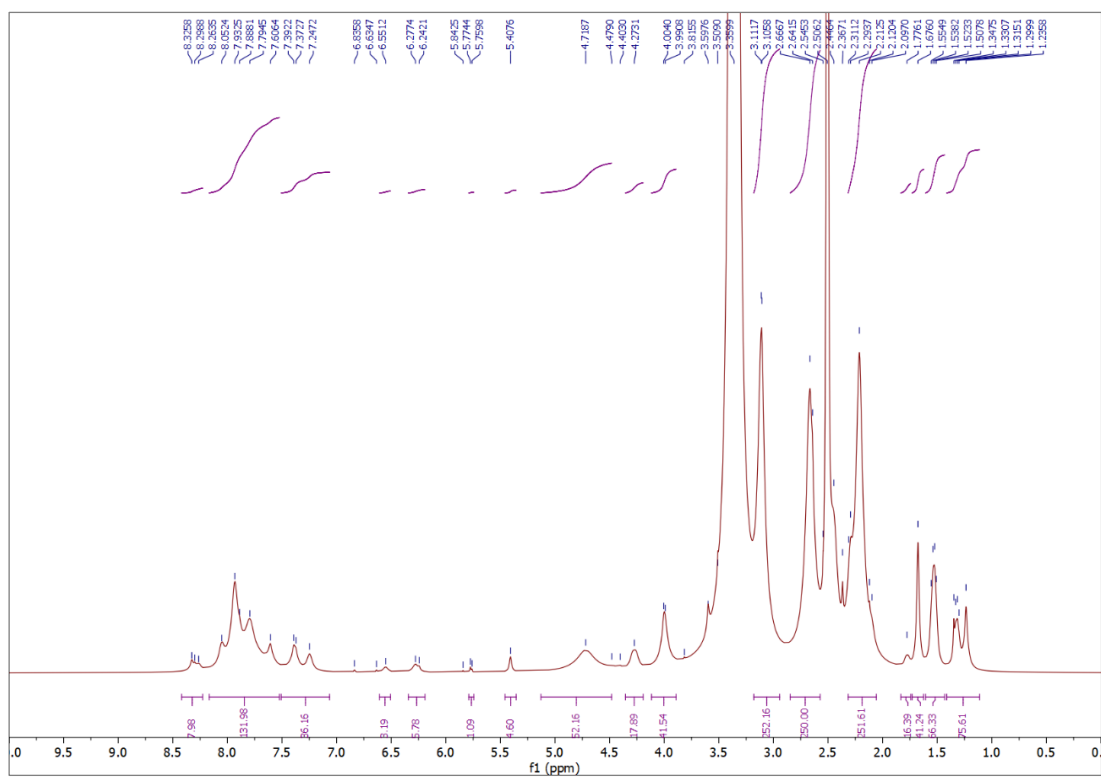


Figure S7. ^1H NMR of compound **7** in DMSO-d_6 (500 MHz).

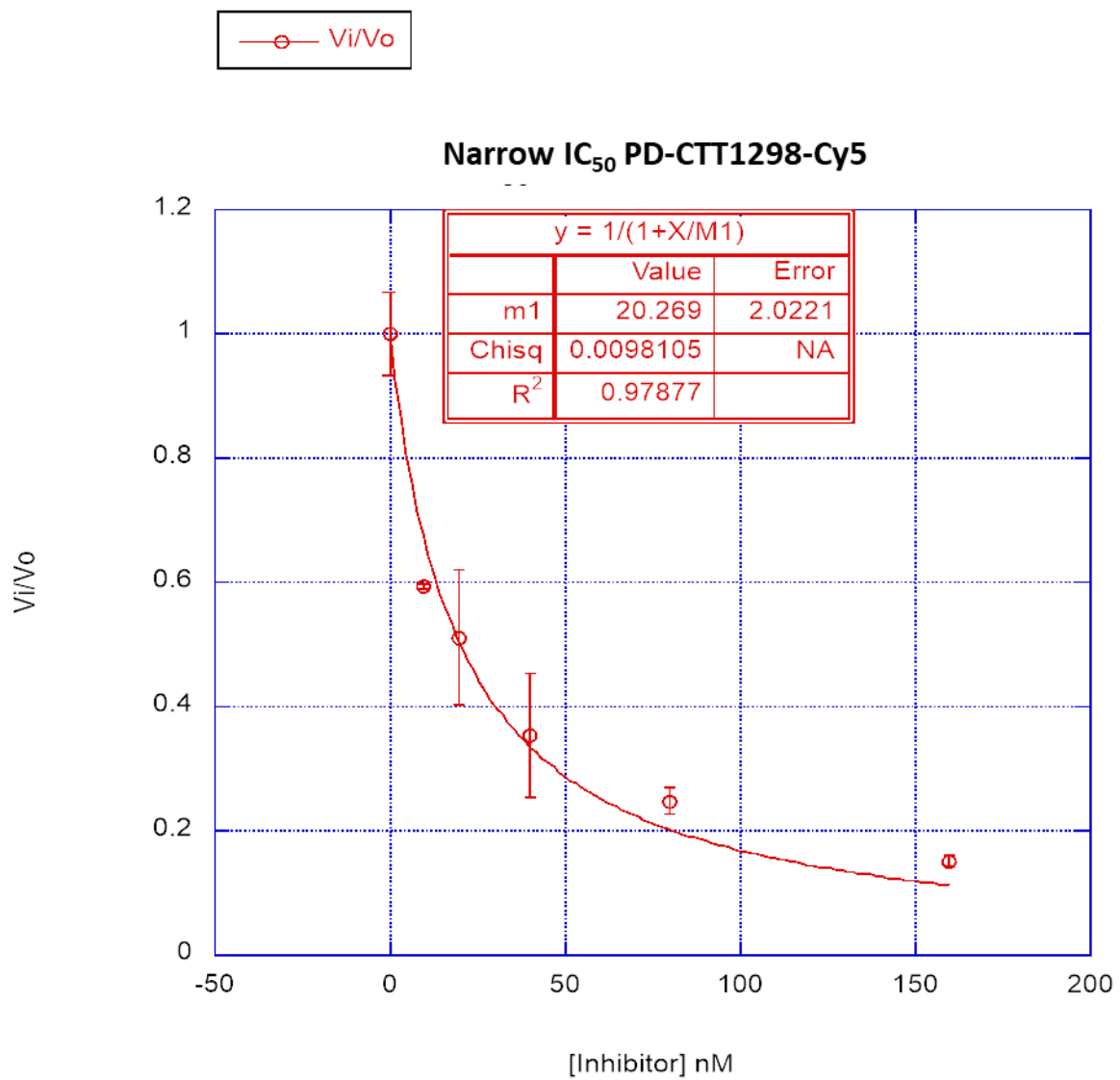


Figure S8. PSMA-IC₅₀ for *PD-CTT1298-Cy5* (20.26nM).

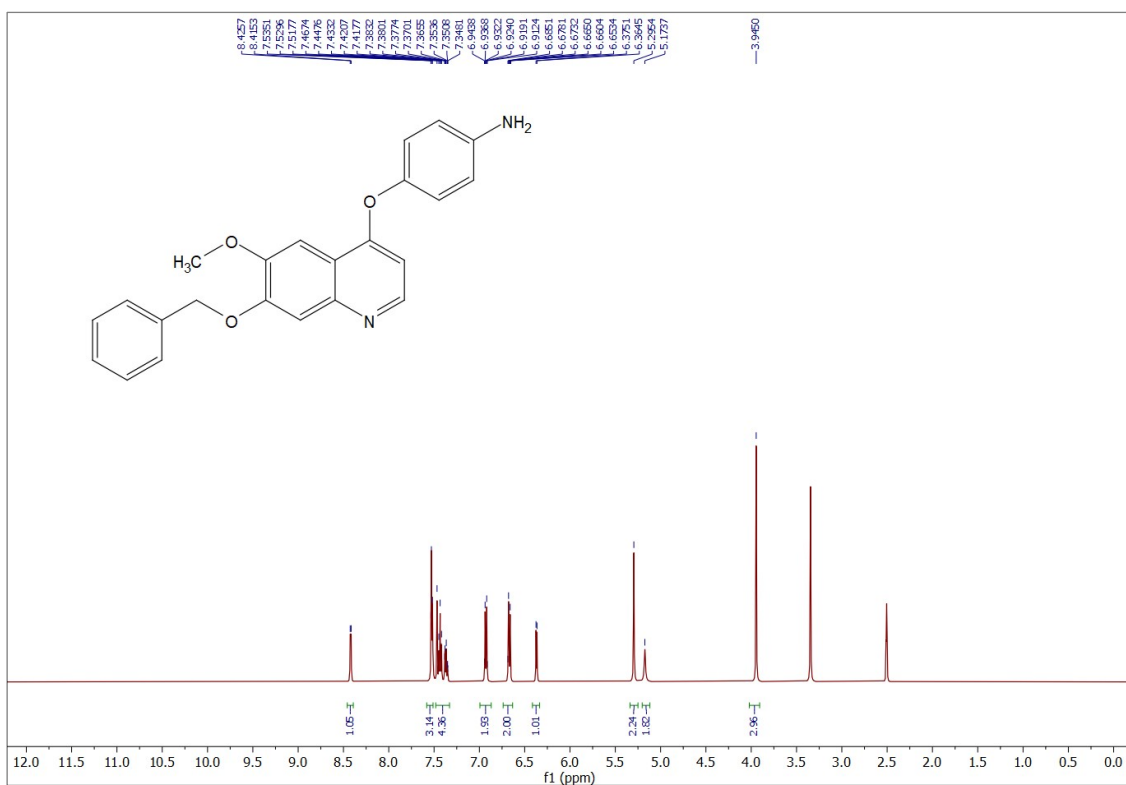


Figure S9. ^1H NMR spectra of 4-((7-(benzyloxy)-6-methoxyquinolin-4-yl)oxy)aniline (**10**) in DMSO-d_6 (500 MHz).

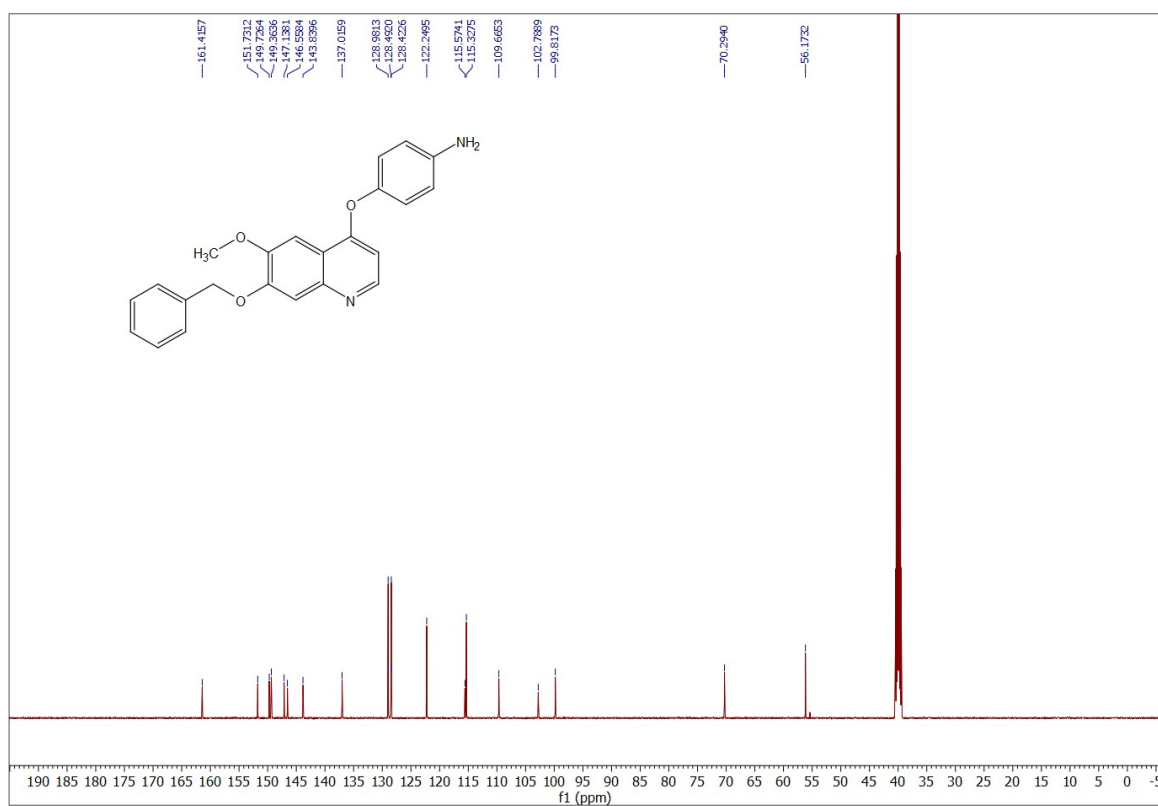


Figure S10. ^{13}C NMR spectra of 4-((7-(benzyloxy)-6-methoxyquinolin-4-yl)oxy)aniline (**10**) in DMSO-d_6 (125 MHz).

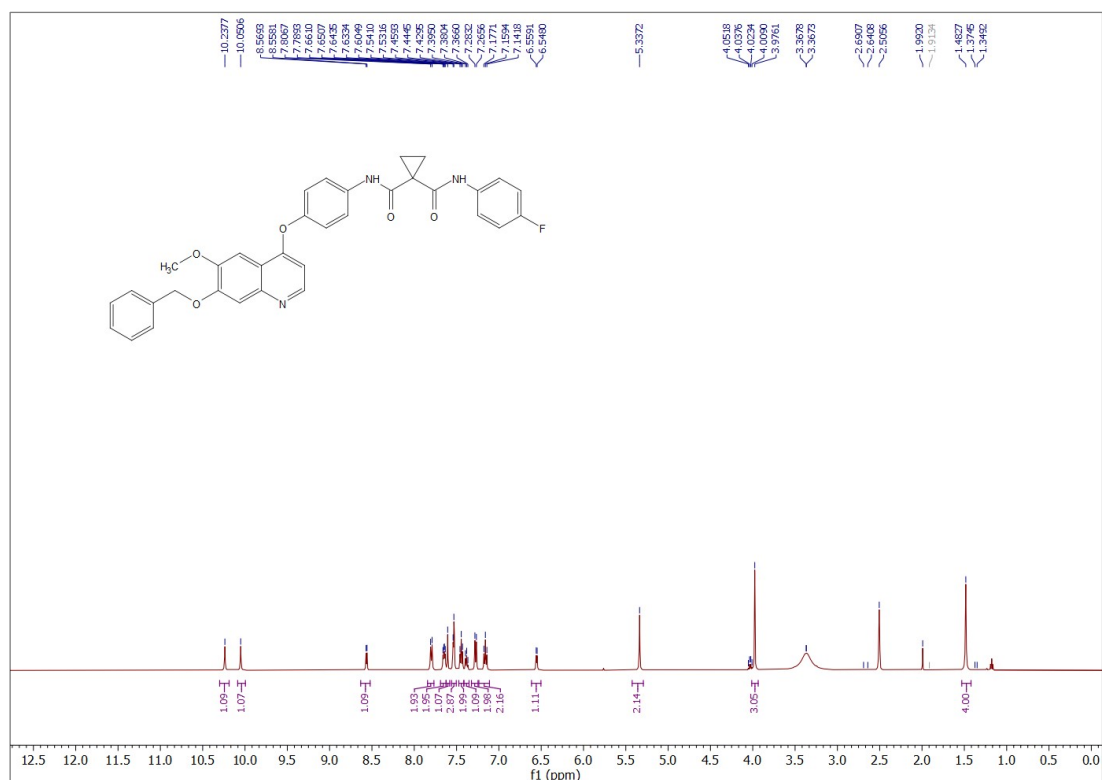


Figure S11. ¹H NMR spectra of *N*-(4-((7-(benzyloxy)-6-methoxyquinolin-4-yl)oxy)phenyl)-*N*-(4-fluorophenyl)cyclopropane-1,1-dicarboxamide (**12**) in DMSO-d₆ (500 MHz).

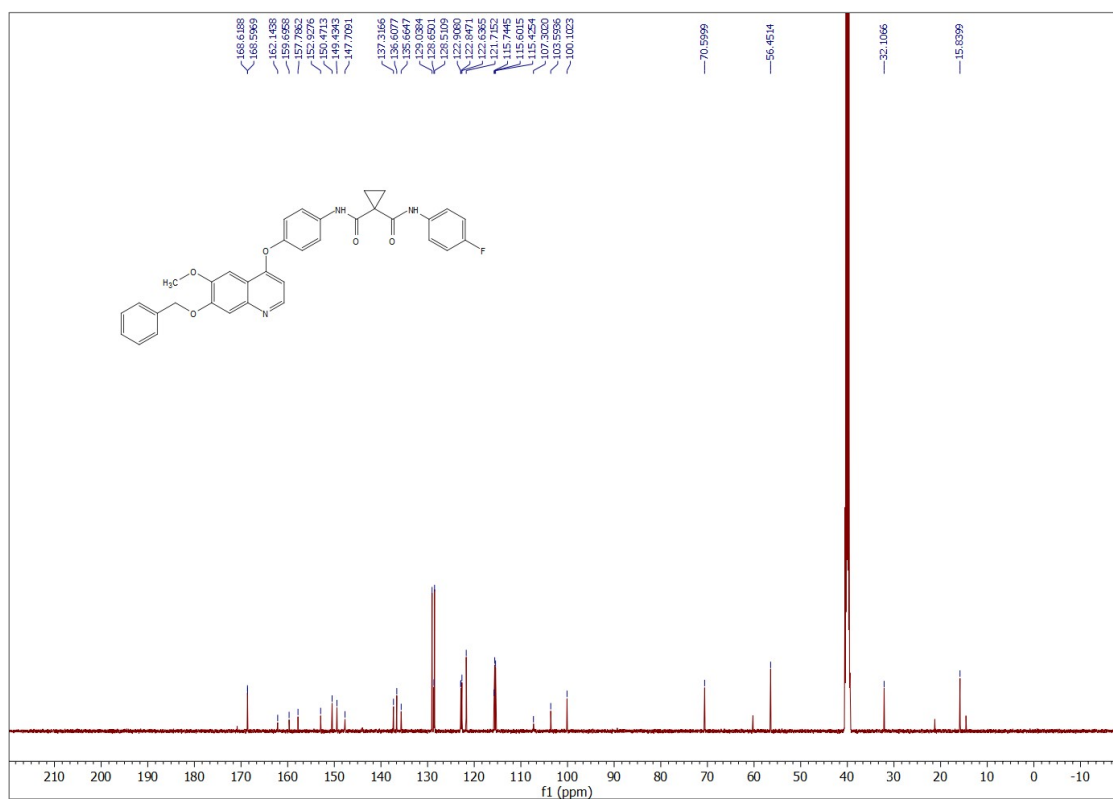


Figure S12. ¹³C NMR spectra of *N*-(4-((7-(benzyloxy)-6-methoxyquinolin-4-yl)oxy)phenyl)-*N*-(4-fluorophenyl)cyclopropane-1,1-dicarboxamide (**12**) in DMSO-d₆ (125 MHz).

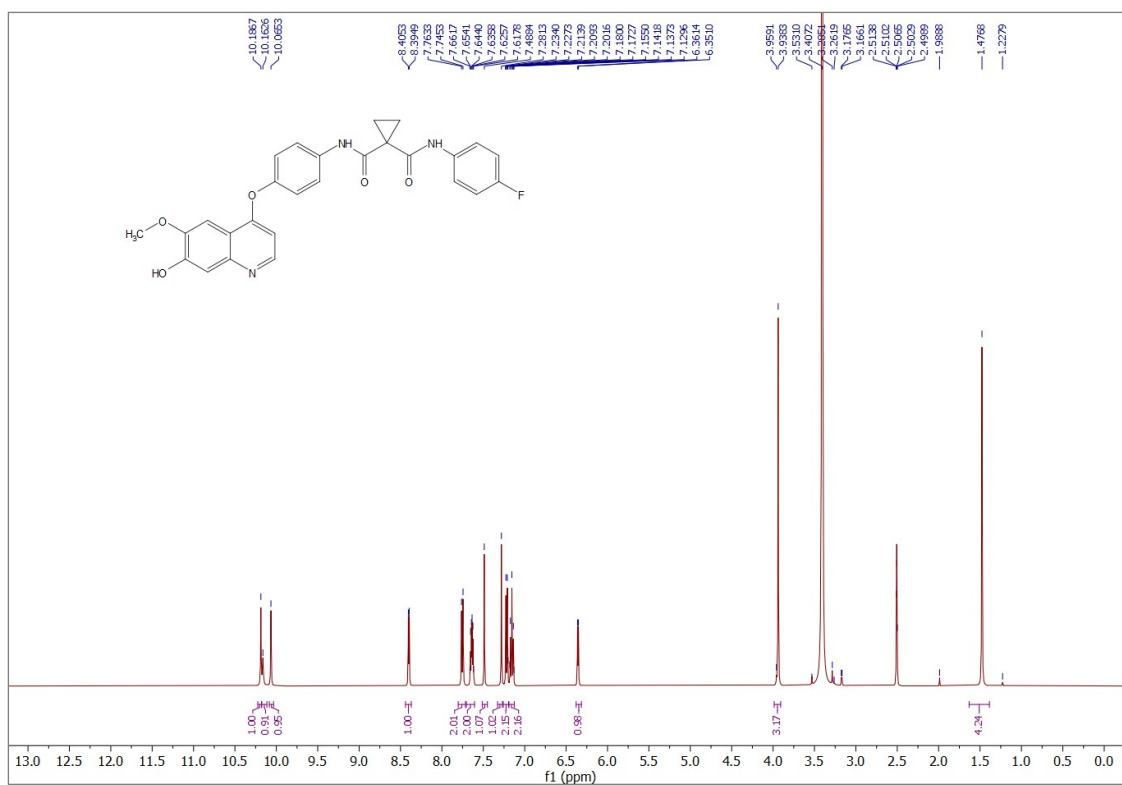


Figure S13. ¹H NMR spectra of *N*-(4-fluorophenyl)-*N*-(4-((7-hydroxy-6-methoxyquinolin-4-yl)oxy)phenyl)cyclopropane-1,1-dicarboxamide (**13**) in DMSO-d₆ (500 MHz).

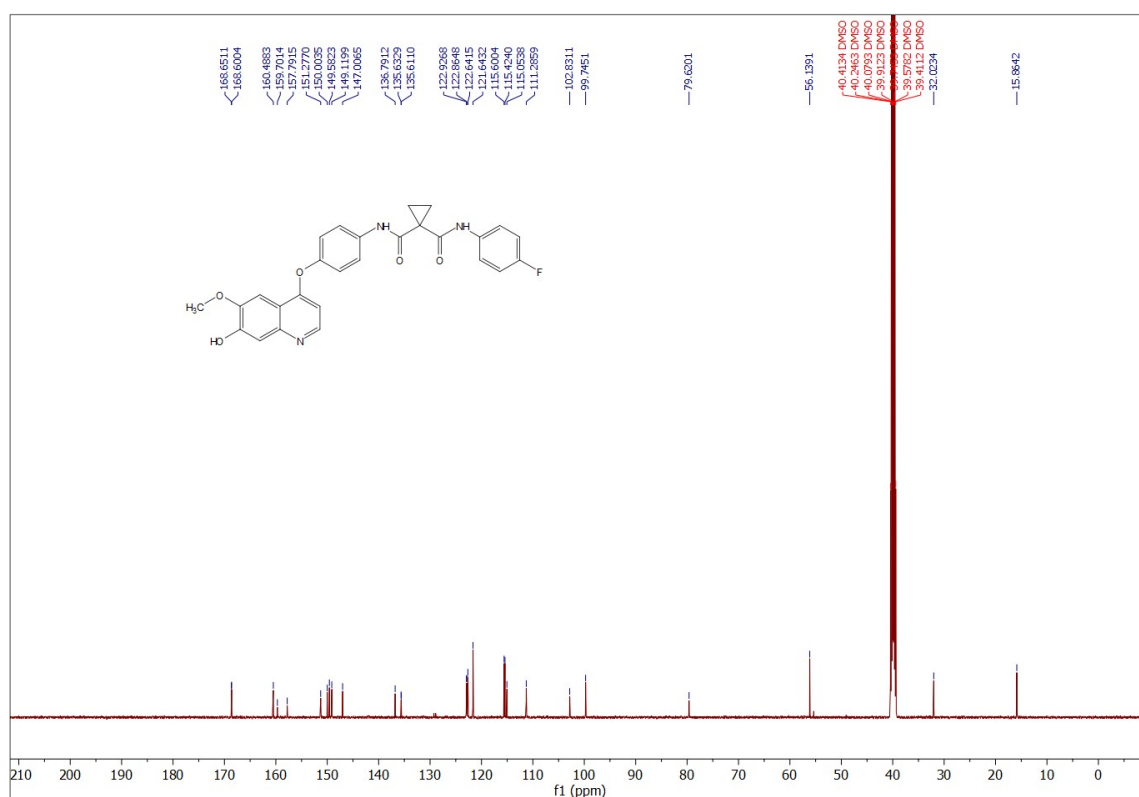


Figure S14. ¹³C NMR spectra of *N*-(4-fluorophenyl)-*N*-(4-((7-hydroxy-6-methoxyquinolin-4-yl)oxy)phenyl)cyclopropane-1,1-dicarboxamide (**13**) in DMSO-d₆ (125 MHz).

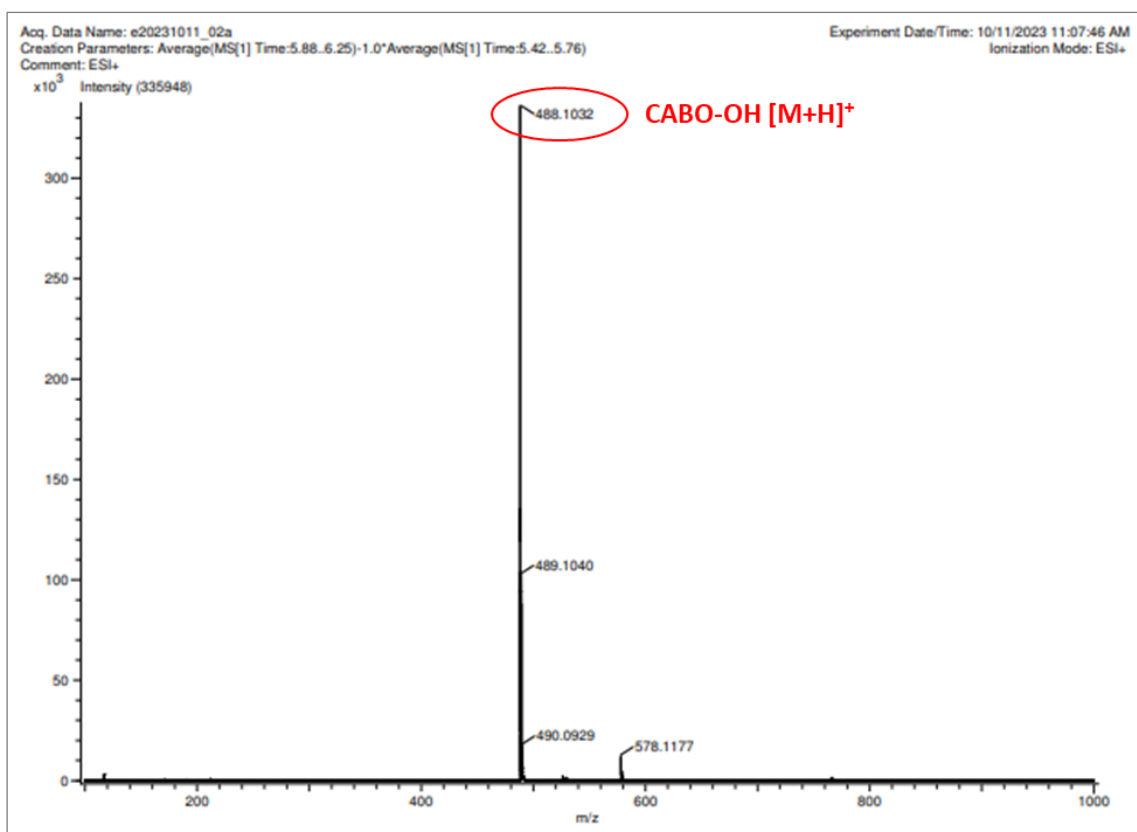


Figure S15. Mass spectra of *N*-(4-fluorophenyl)-*N*-((7-hydroxy-6-methoxyquinolin-4-yl)oxy)cyclopropane-1,1-dicarboxamide (**13**).

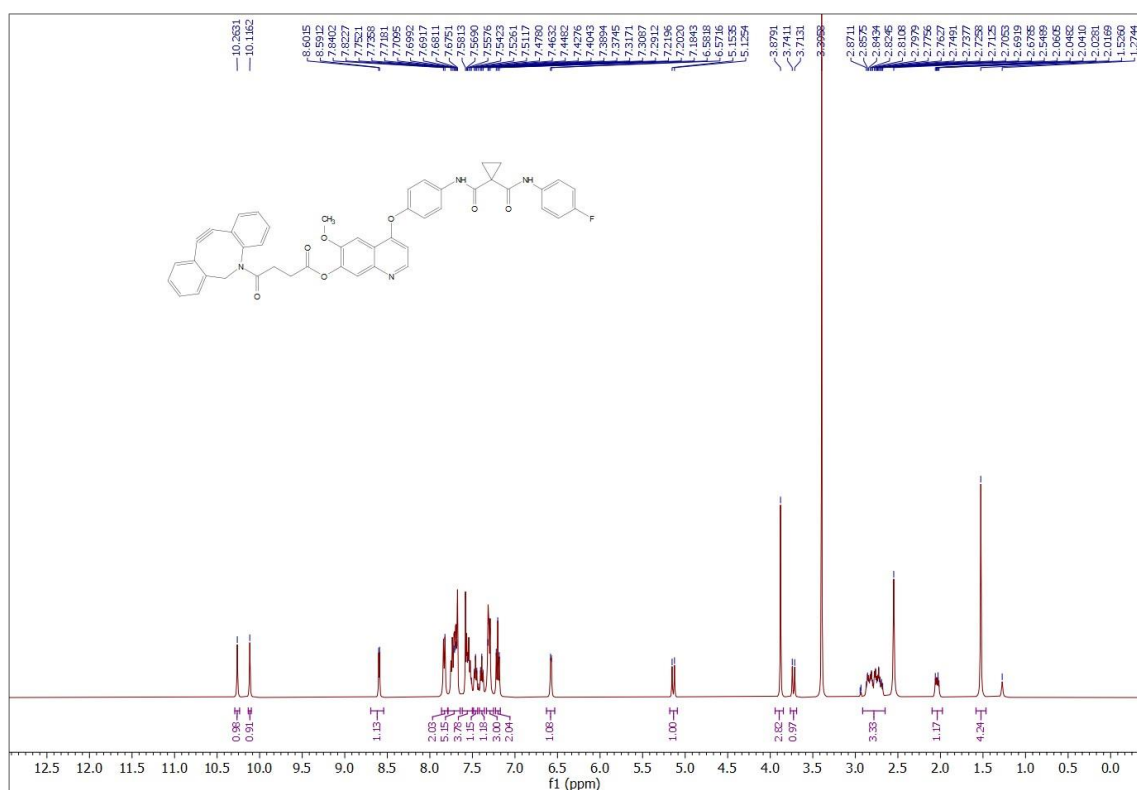


Figure S16. ¹H NMR spectra of *Cabo-DBCO* (**15**) in DMSO-d₆ (500 MHz).

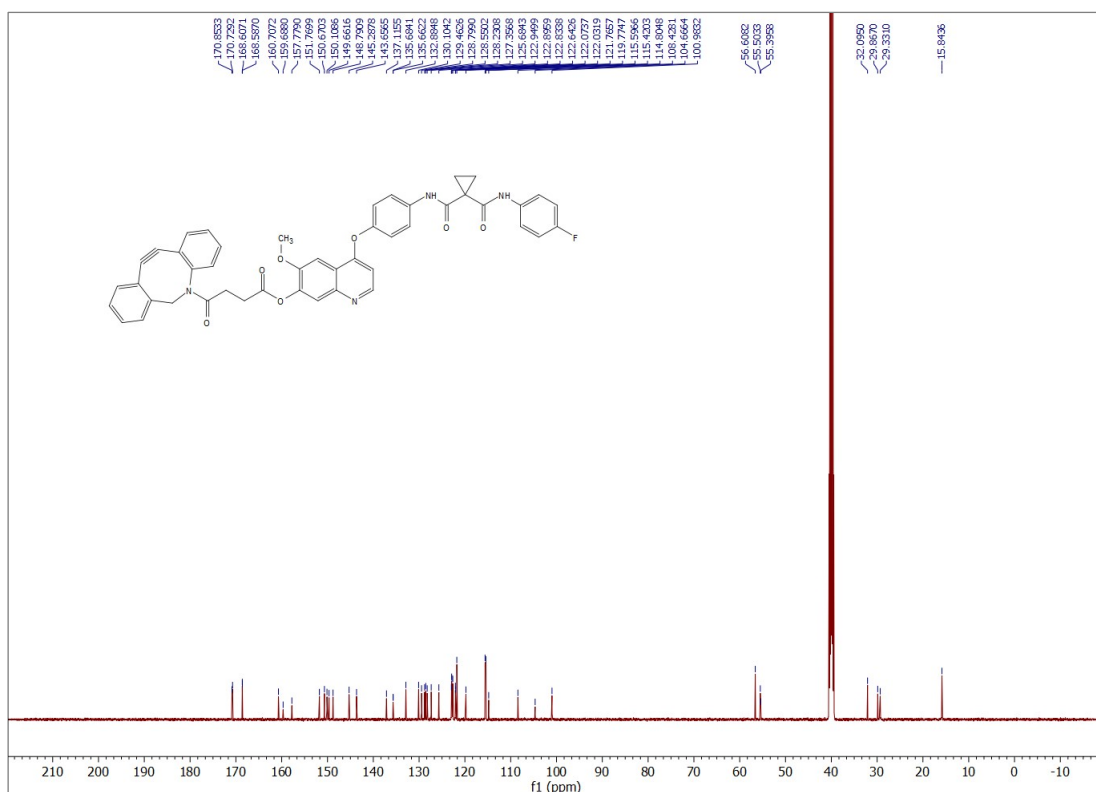


Figure S17. ¹³C NMR spectra of *Cabo-DBCO* (**15**) in DMSO-d₆ (125 MHz).

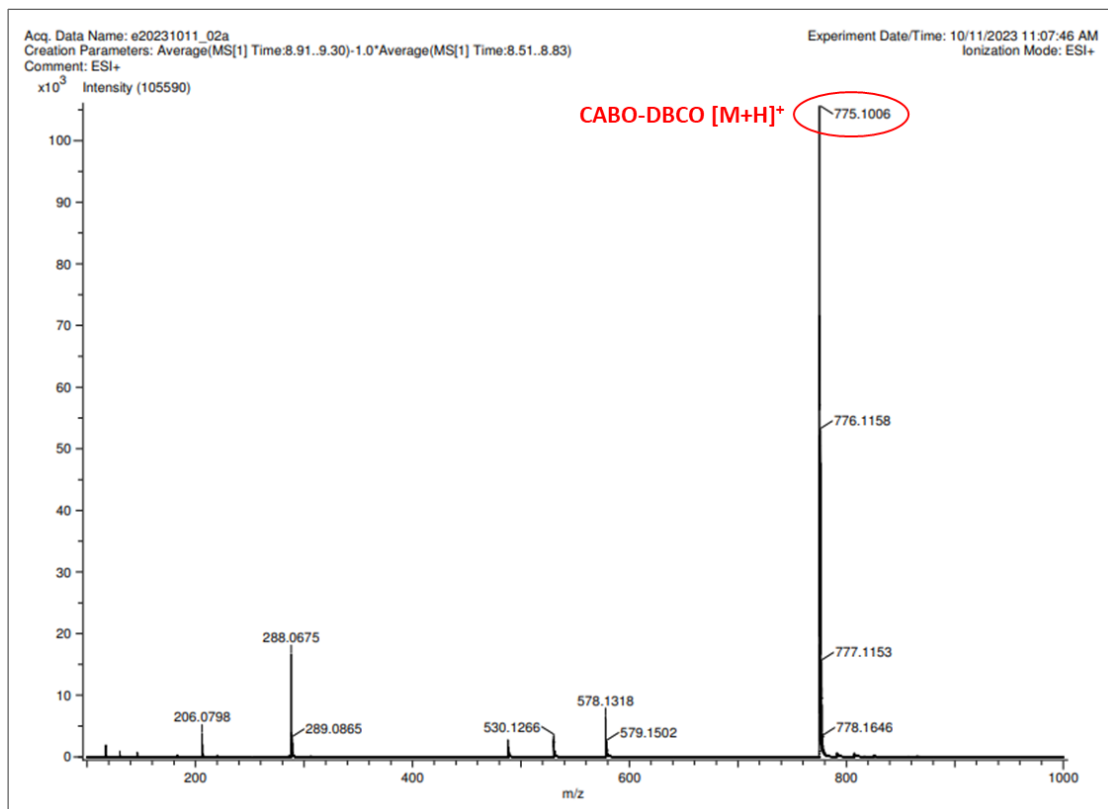


Figure S18. Mass spectra of *Cabo-DBCO* (**15**).

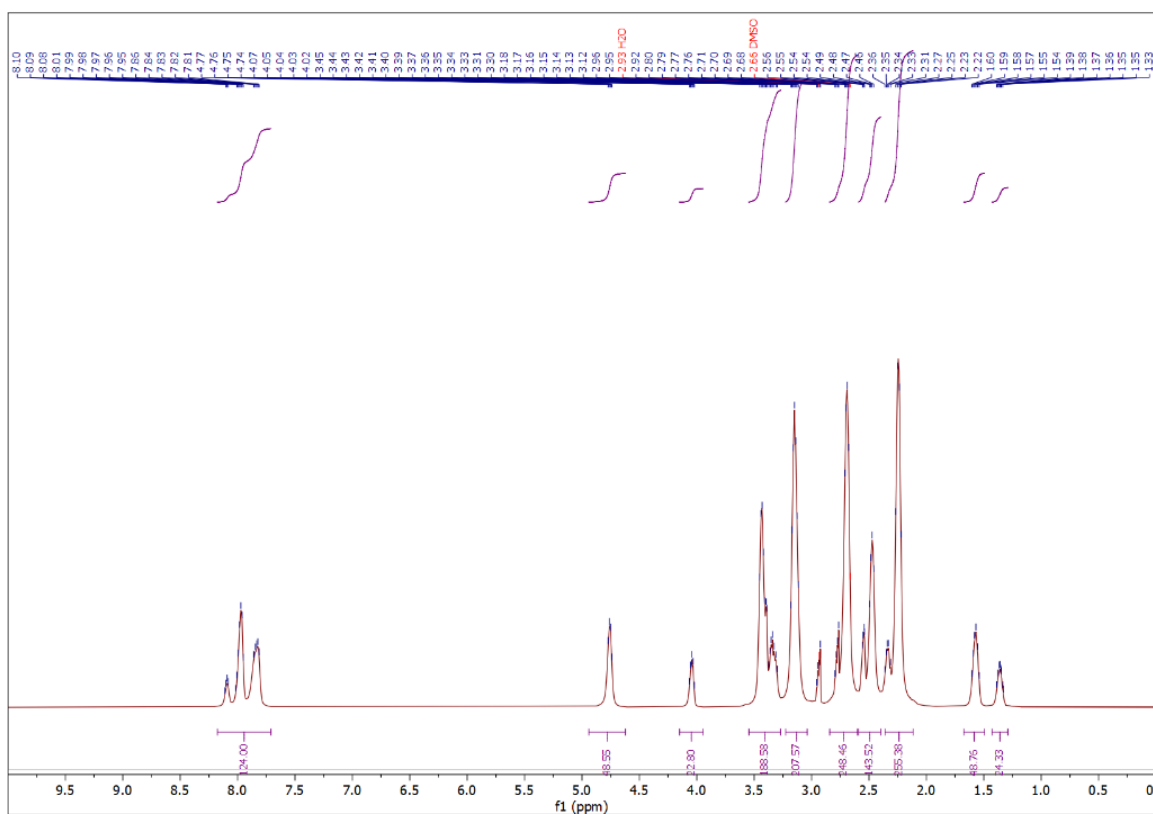


Figure S19. ¹H NMR of compound 16 in DMSO-d₆ (500 MHz).

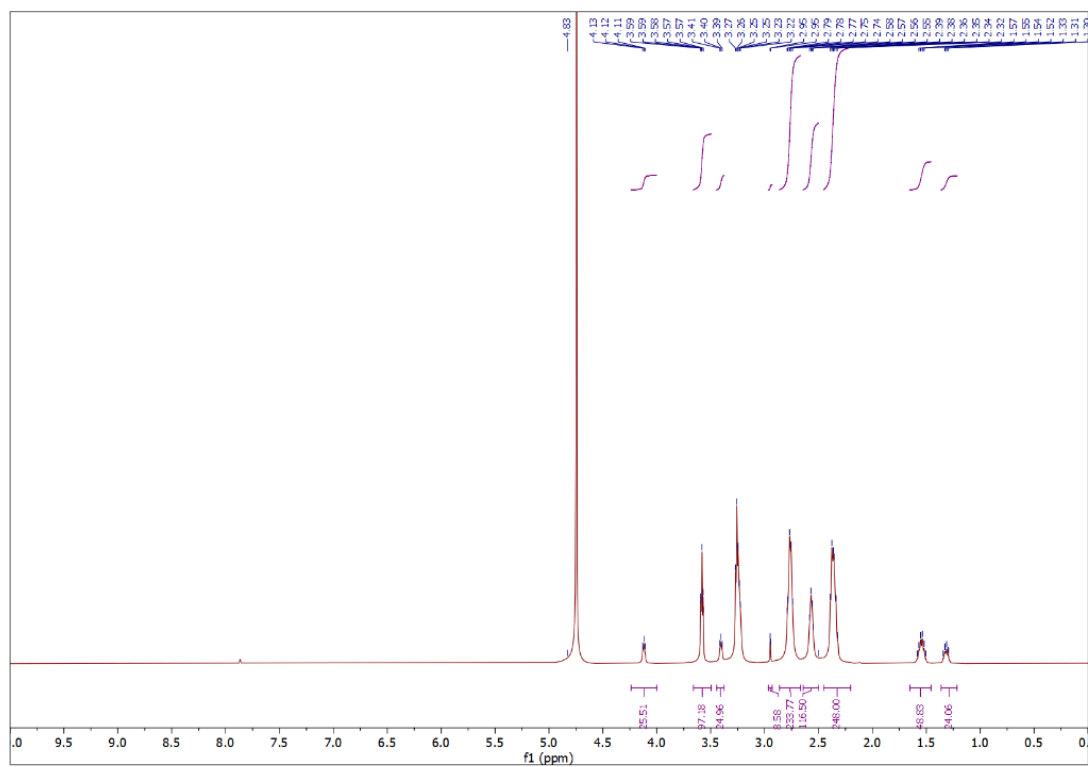


Figure S20. ¹H NMR of compound 16 in D₂O (500 MHz).

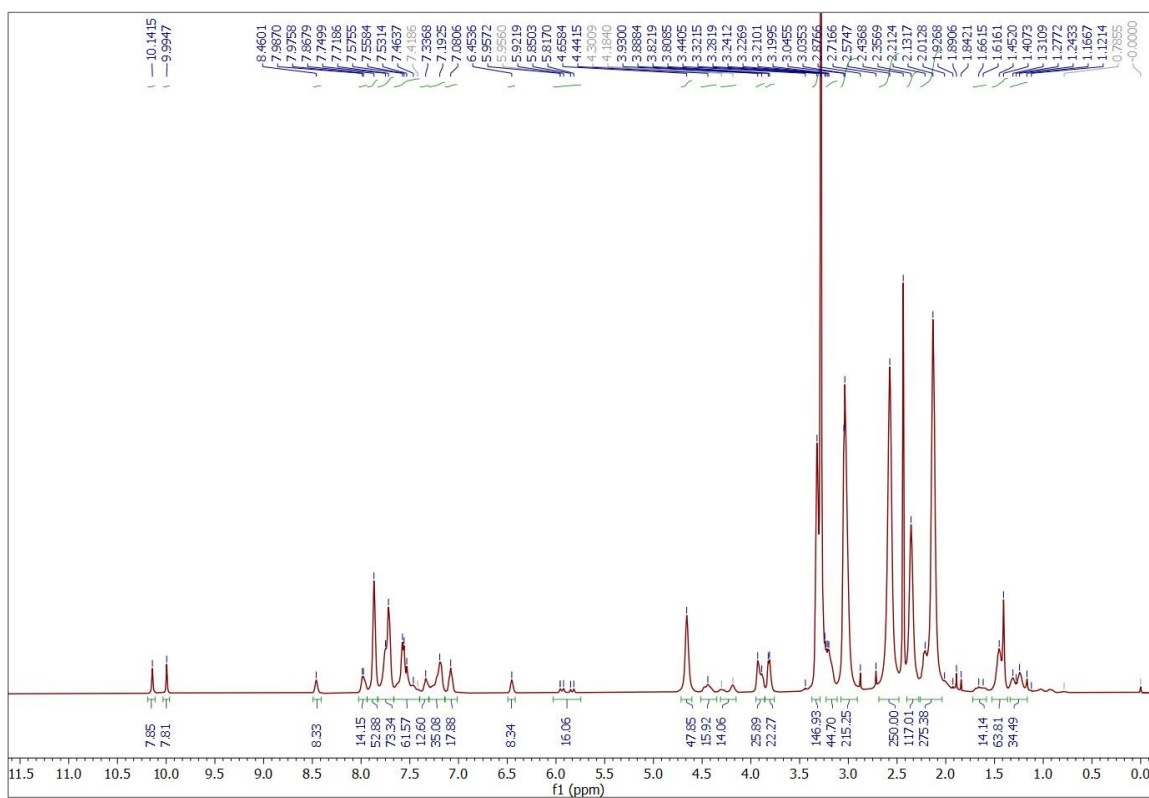


Figure S21. ^1H NMR spectra of *PD-Cabo* (**17**) in DMSO- d_6 (500 MHz).

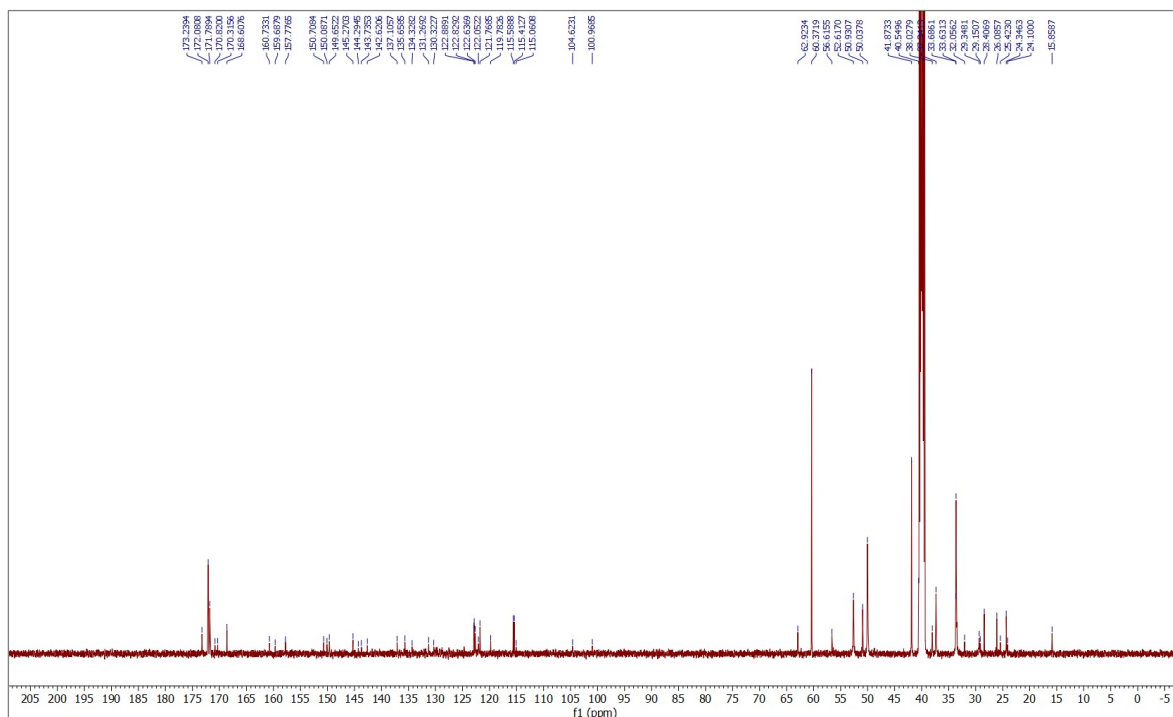


Figure S22. ^{13}C NMR spectra of *PD-Cabo* (**17**) in DMSO- d_6 (125 MHz).

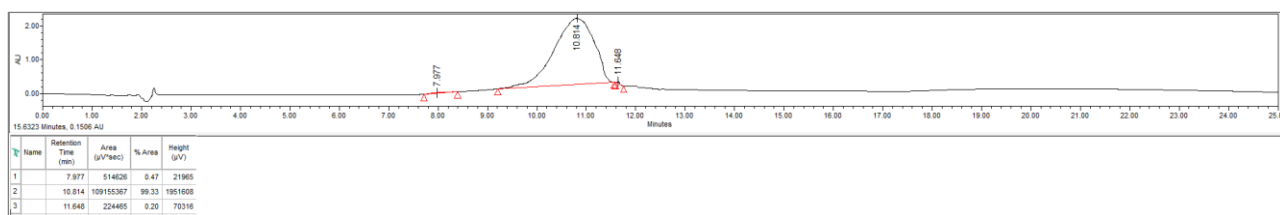


Figure S23. HPLC chromatogram *PD-Cabo* (**17**) (Purity >99%).

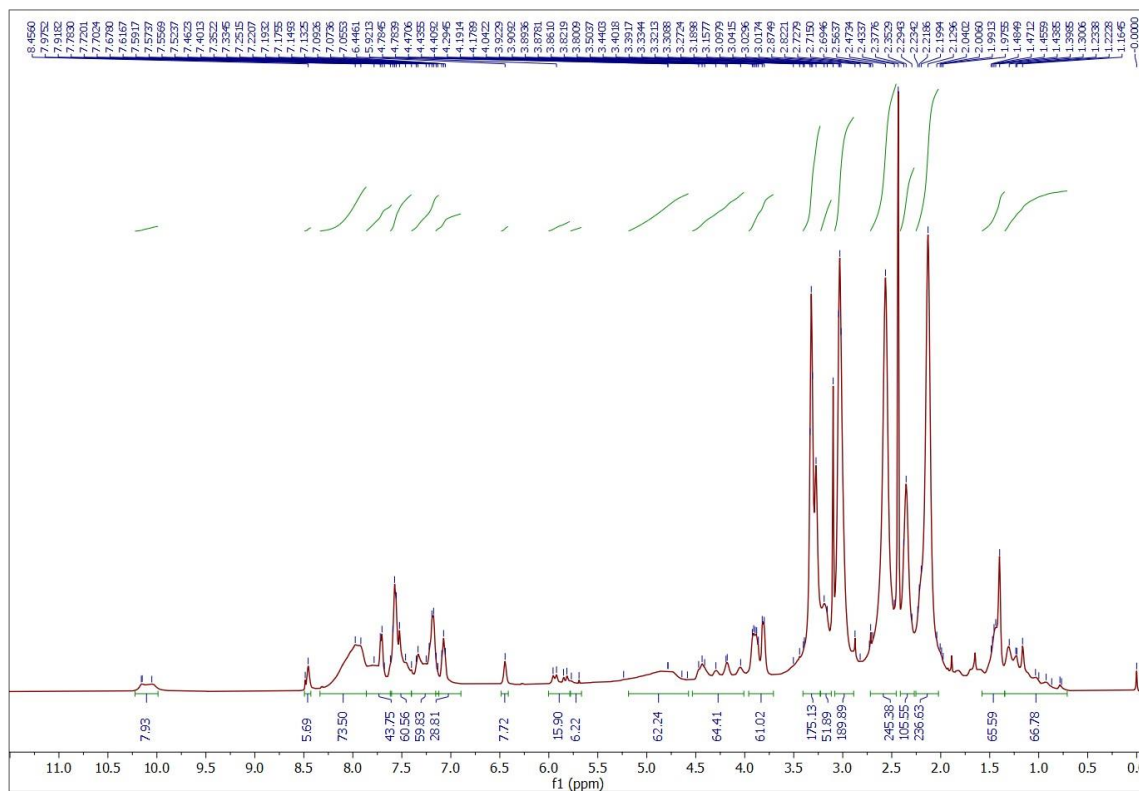


Figure S24. ^1H NMR spectra of *PD-CTT1298-Cabo* (**18**) in DMSO-d_6 (500 MHz).

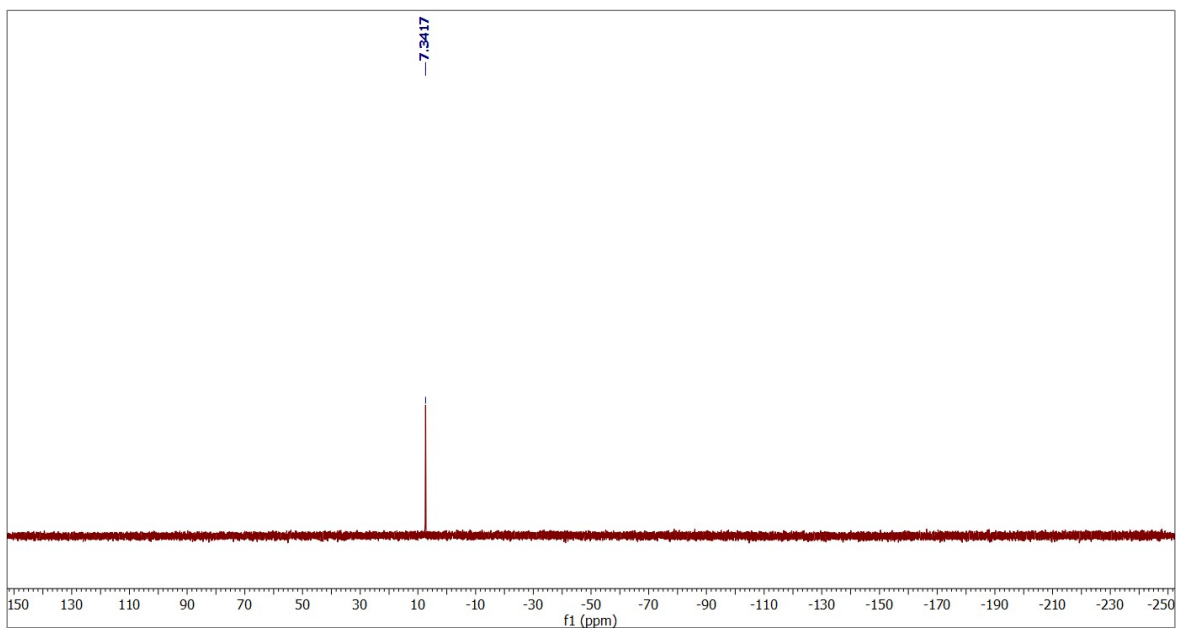


Figure S25. ^{31}P NMR spectra of *PD-CTT1298-Cabo* (**18**) in D_2O (202 MHz).

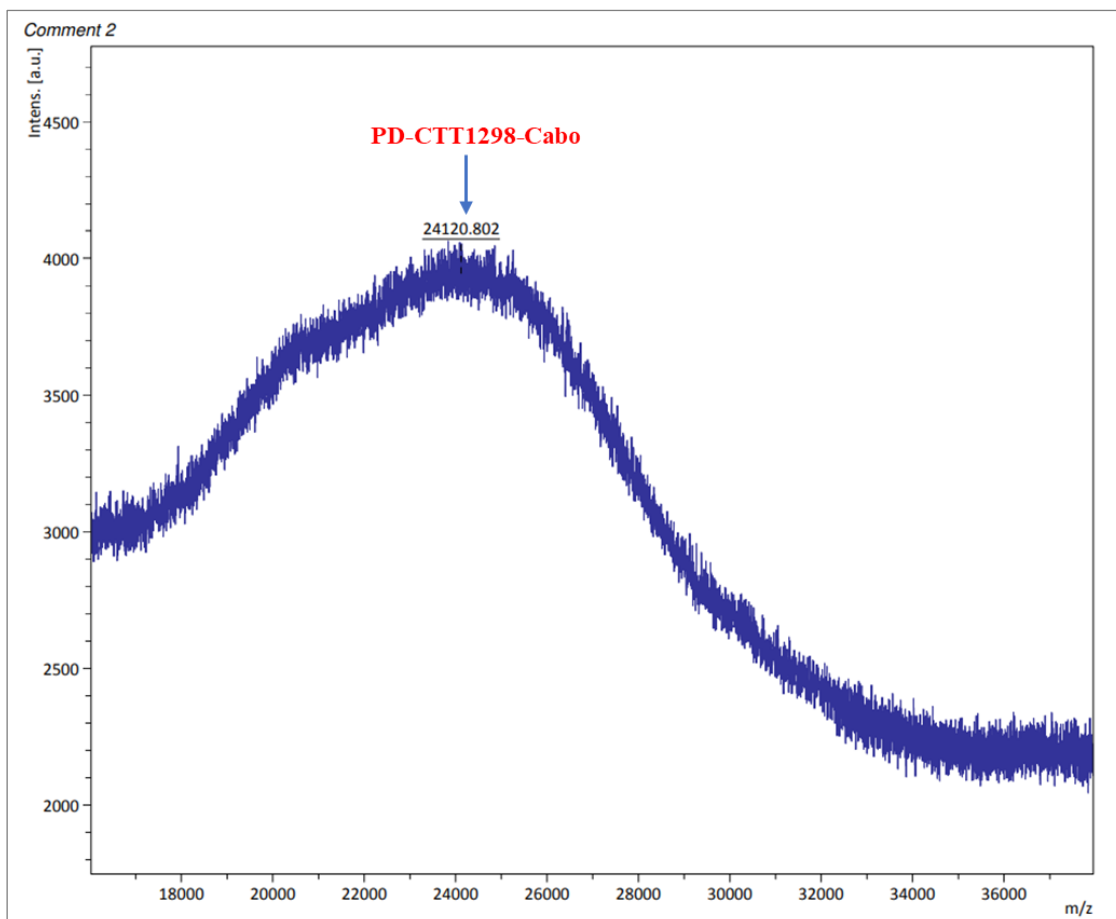


Figure S26. Mass spectra of *PD-CTT1298-Cabo* (**18**).

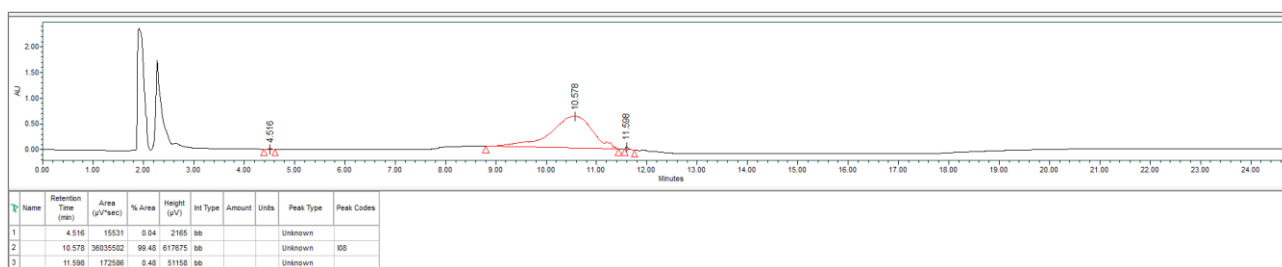


Figure S27. HPLC chromatogram *PD-CTT1298-Cabo* (**18**) (Purity >99%).

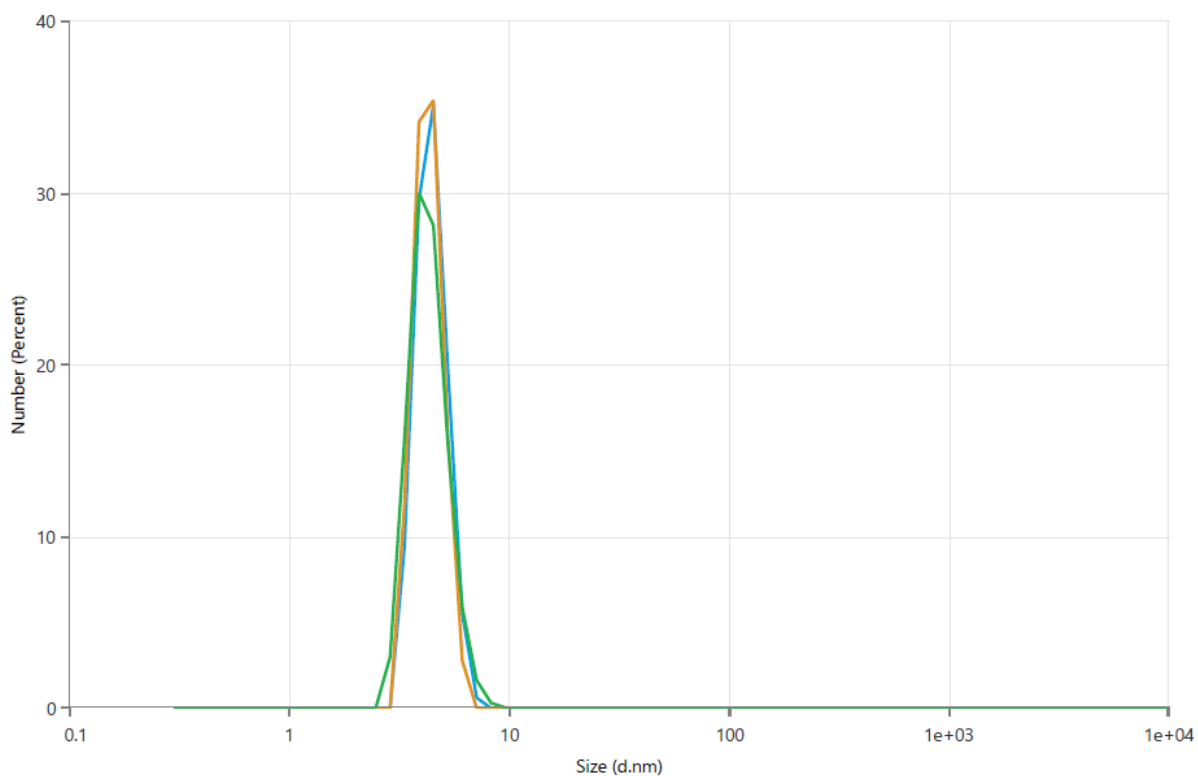


Figure S28. Hydrodynamic radius of *PD-CTT1298-Cabo* analyzed by dynamic light scattering (4.40 ± 0.07 nm)

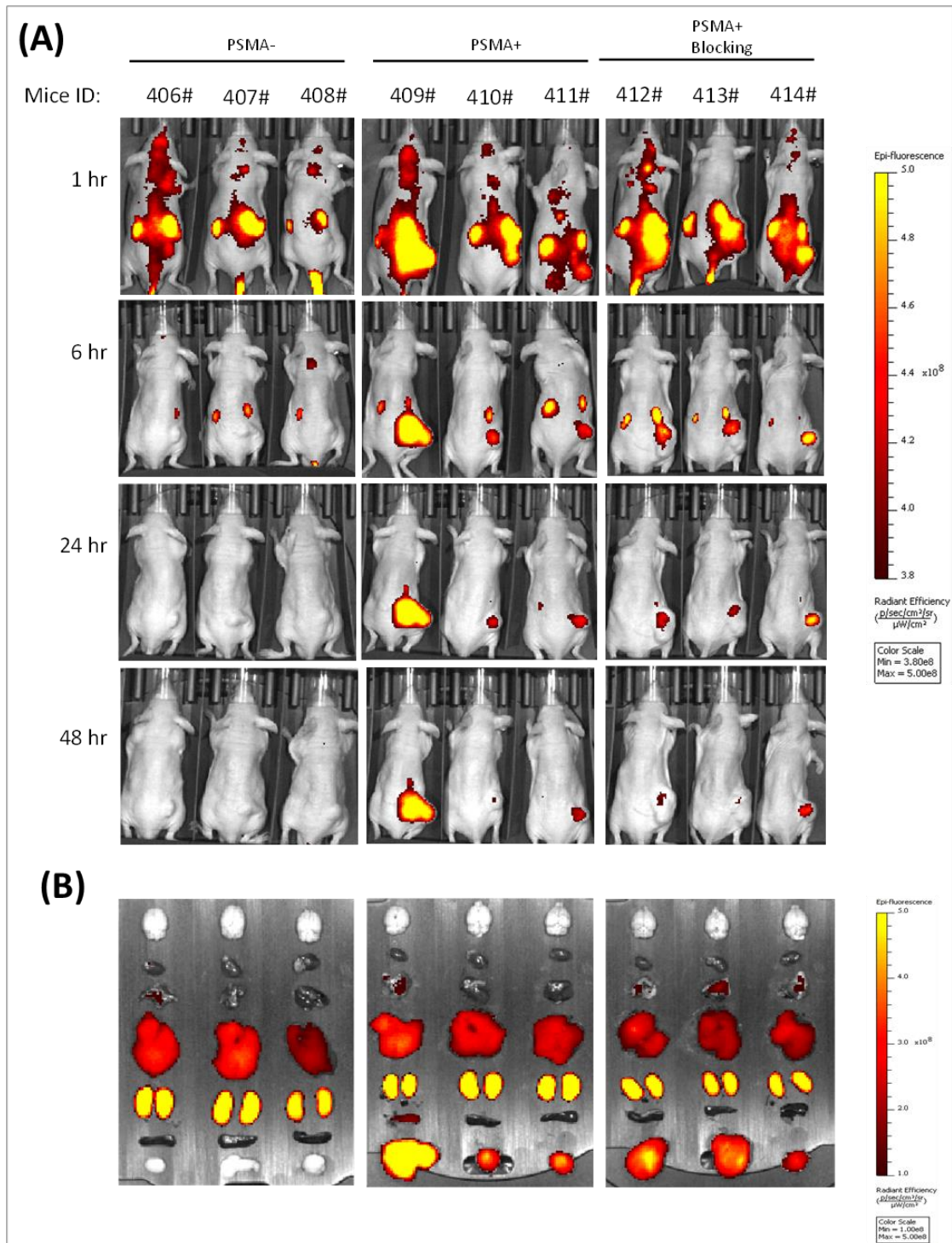


Figure S29. (A) Fluorescent images of representative mice bearing PSMA- or PSMA+ PC-3 tumors from individual groups at 1 hr, 6 hr, 24 hr and 48 hr upon intravenously injection with Cy5.5-D-1298 in. (B) *Ex vivo* fluorescence imaging of tumors and vital organs dissected from representative mice of individual groups at 48 hr. The tissues from top to bottom are as follows: brain, heart, lungs, liver, kidneys, spleen, and tumor.

Compound IC50 Data for c-MET

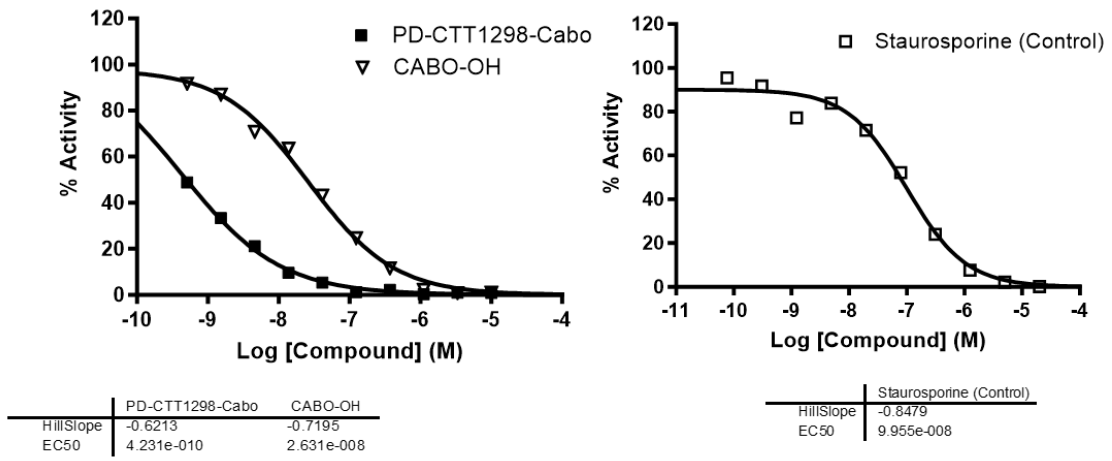


Figure S30. c-Met IC₅₀ for Cabo-OH and *PD-CTT1298-Cabo*.