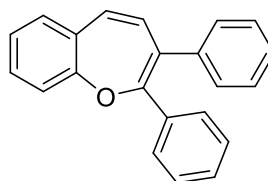
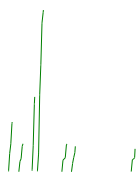
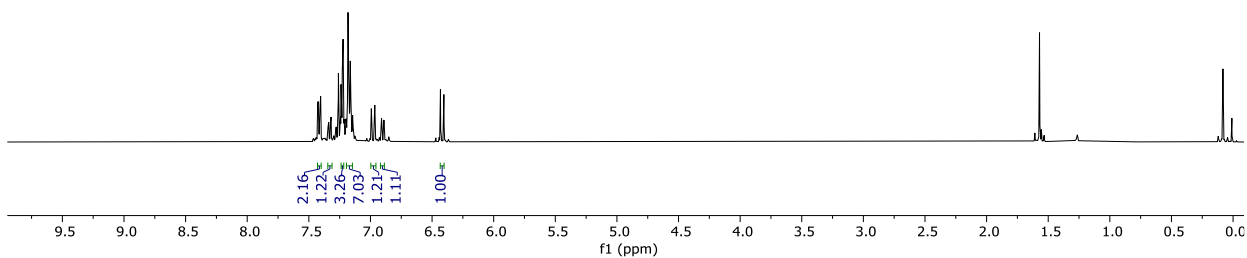


NMR SPECTRA AND HRMS OF SYNTHESIZED COMPOUNDS

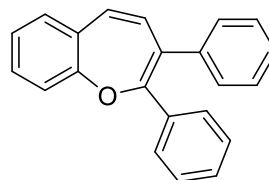
7.43
7.42
7.41
7.40
7.34
7.32
7.32
7.26
7.25
7.24
7.24
7.23
7.23
7.23
7.22
7.22
7.21
7.21
7.21
7.20
7.20
7.19
7.19
7.19
7.18
7.18
7.17
7.16
7.16
7.16
7.15
7.15
7.15
7.14
7.14
7.13
6.99
6.99
6.89
6.89
6.43
6.40



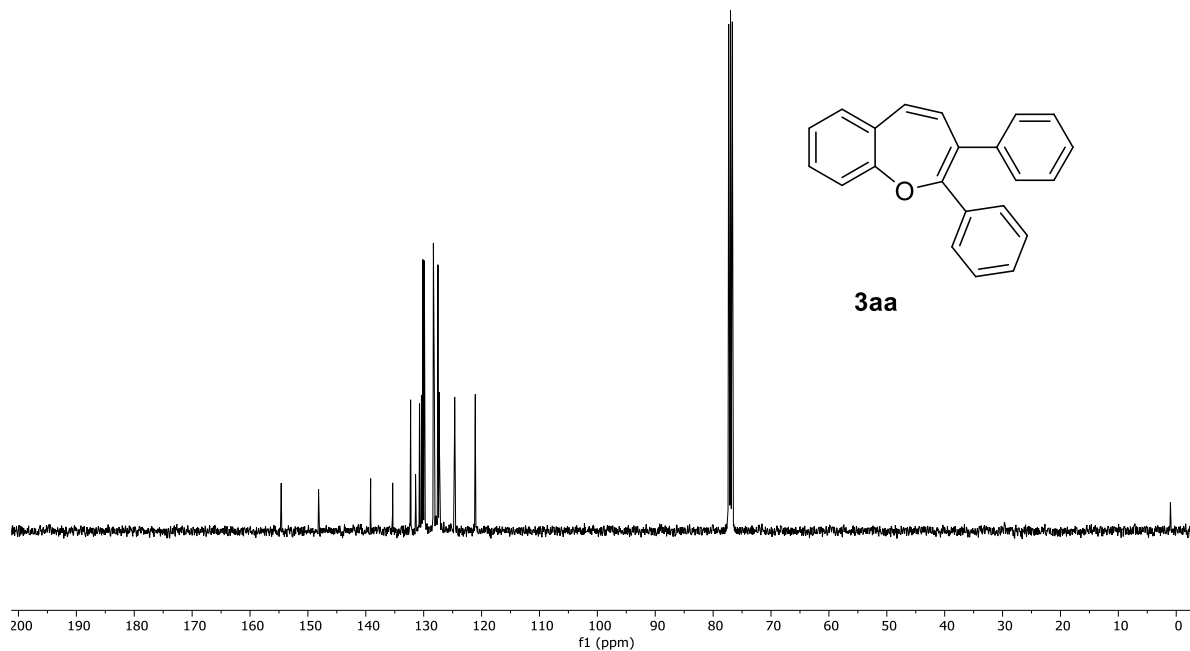
3aa

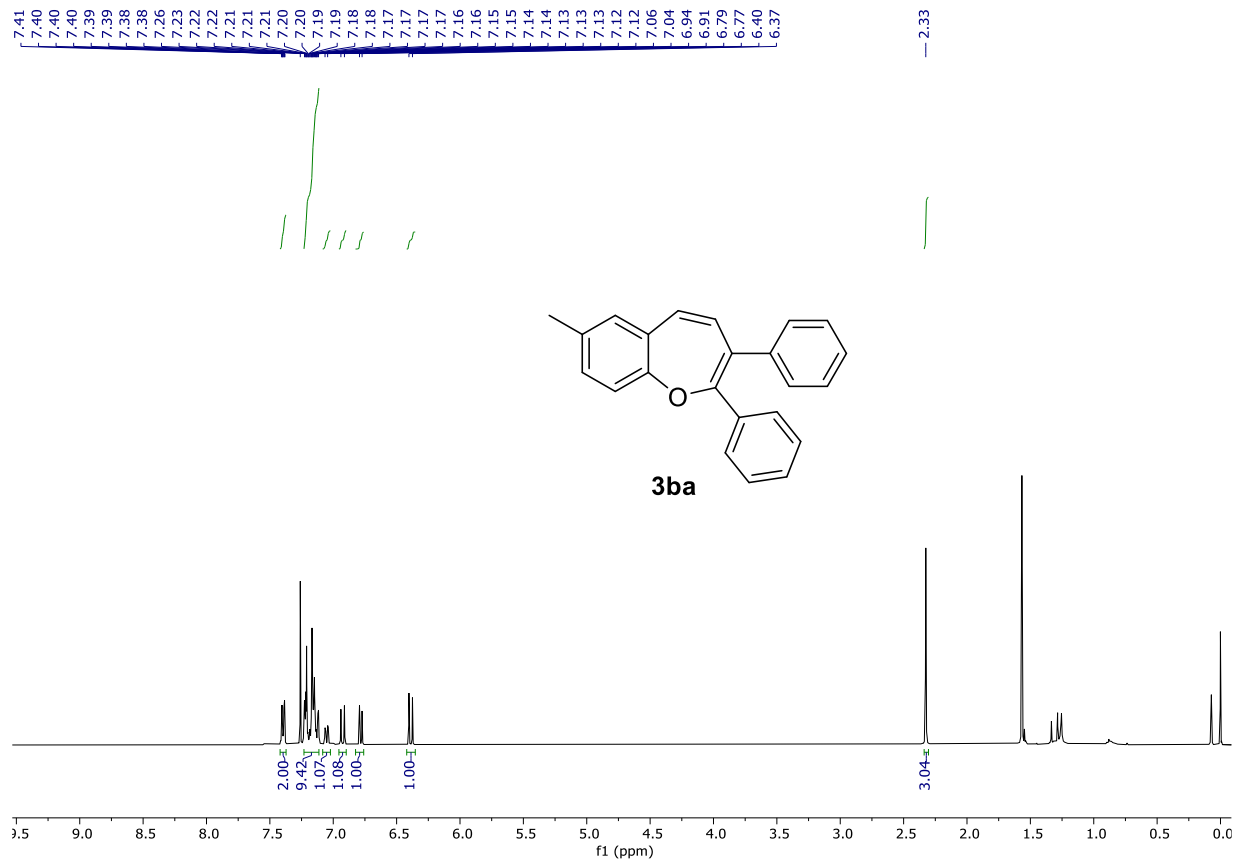
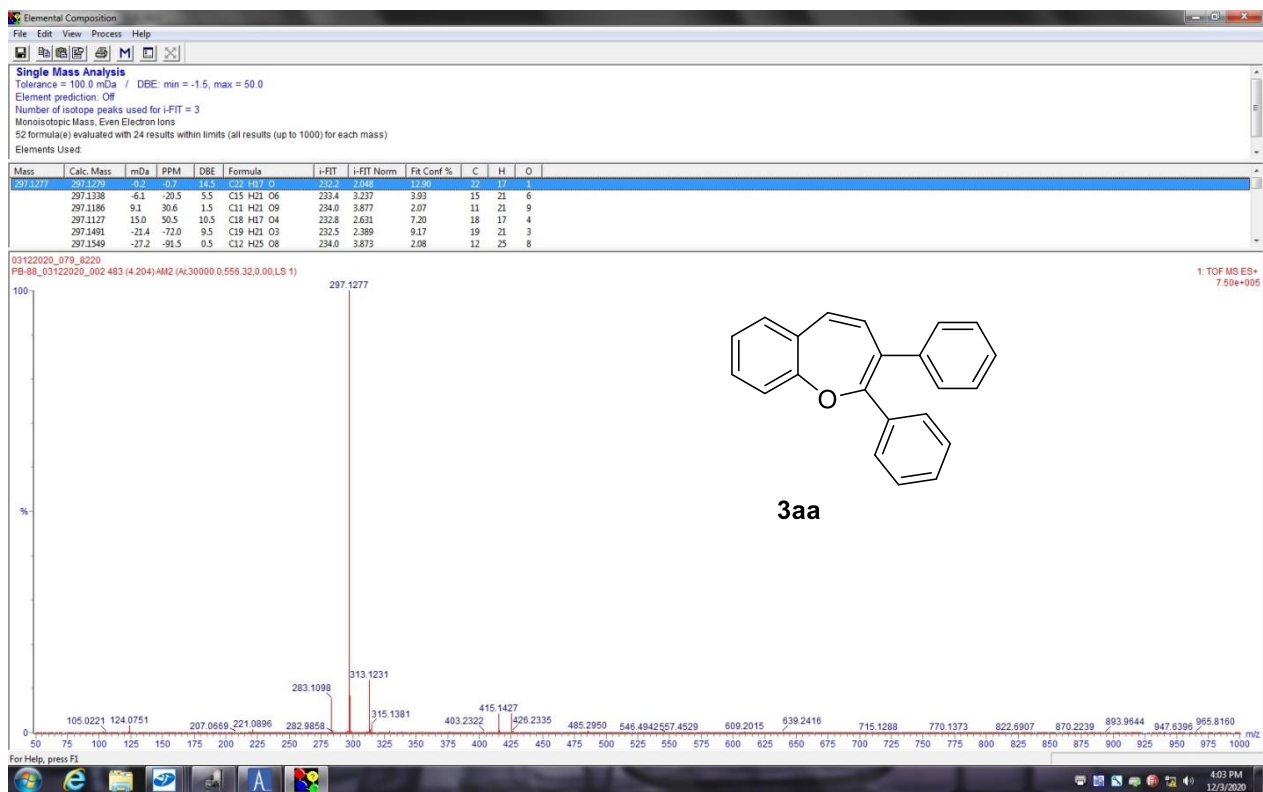


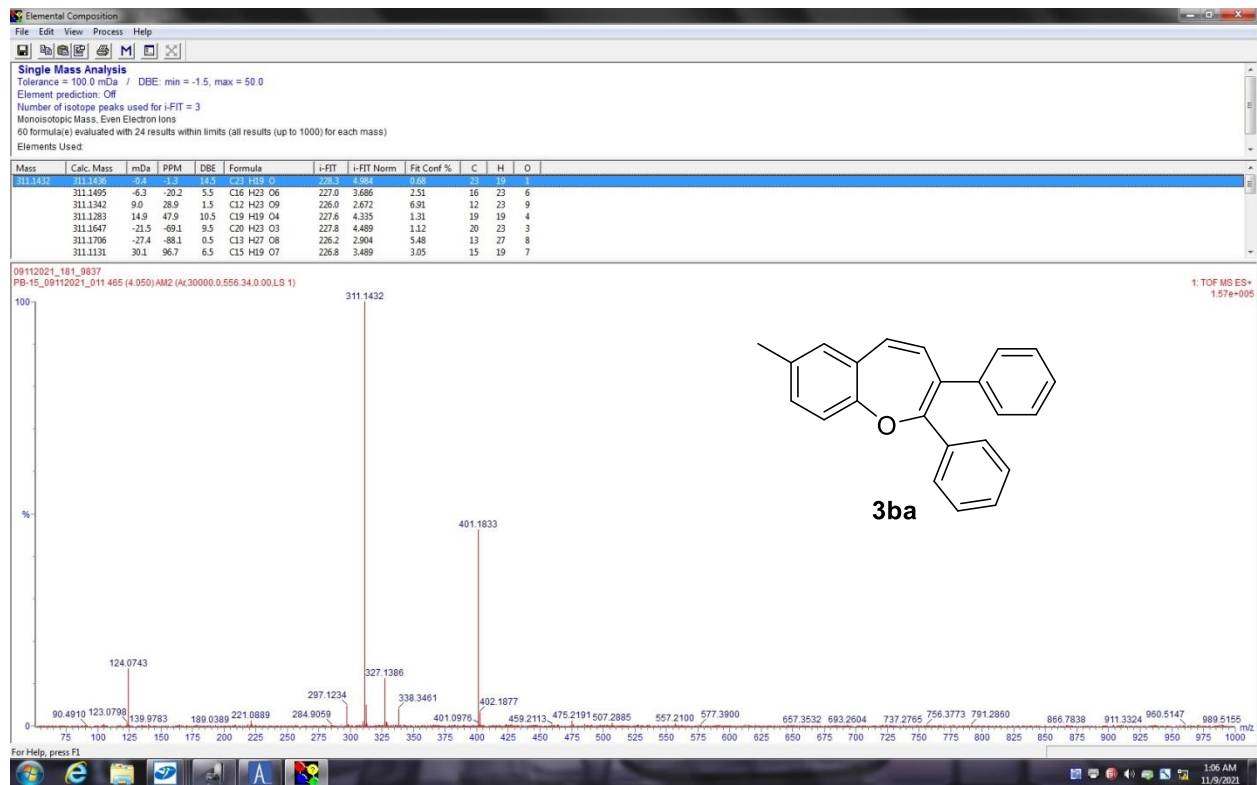
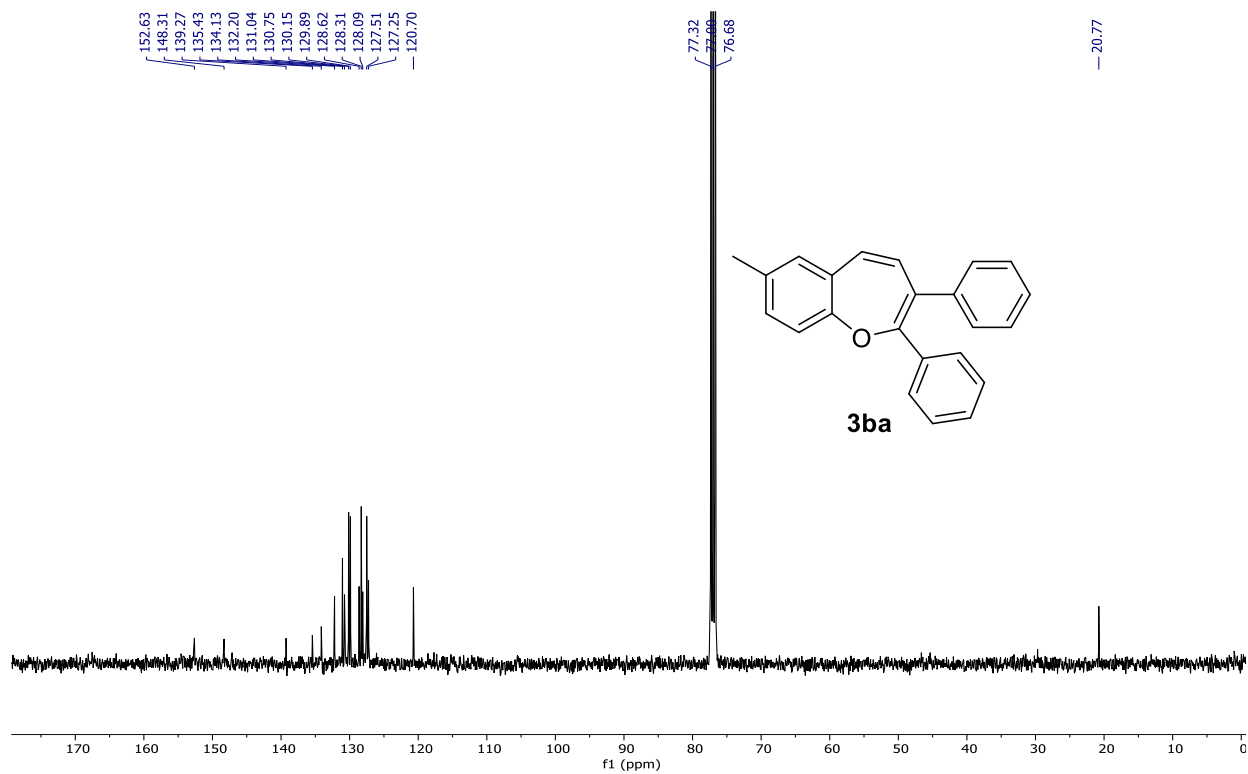
154.62
148.16
139.17
135.36
132.26
131.41
130.72
130.39
130.14
129.89
128.32
128.28
128.16
127.54
127.35
127.30
124.65
121.08
77.32
77.00
76.68

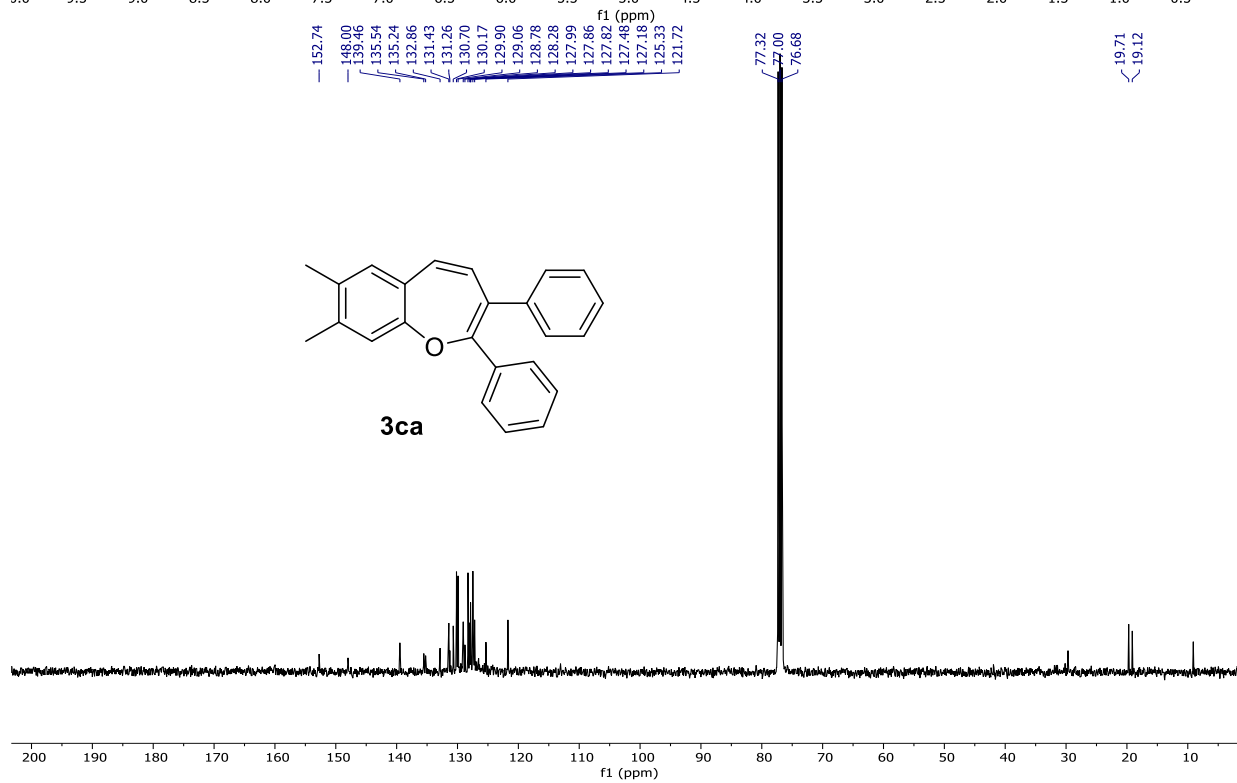
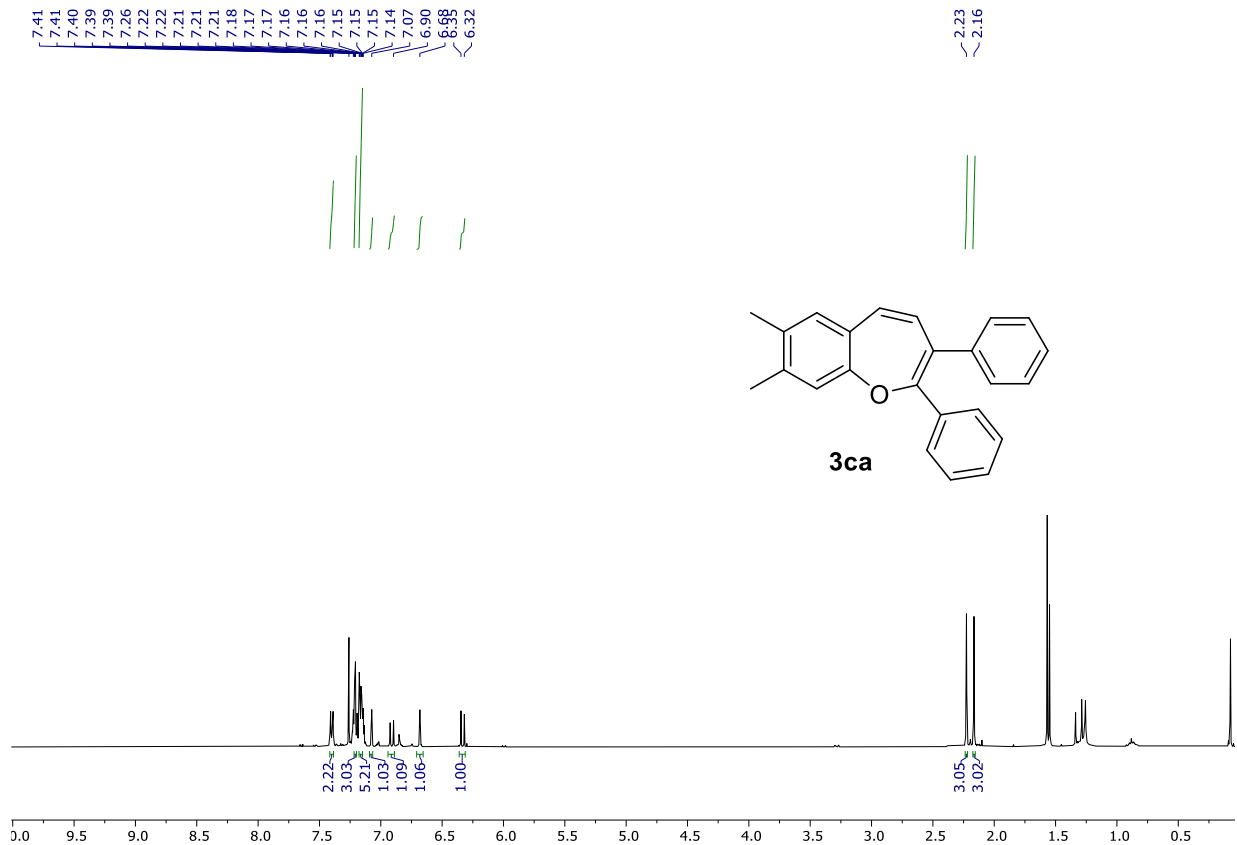


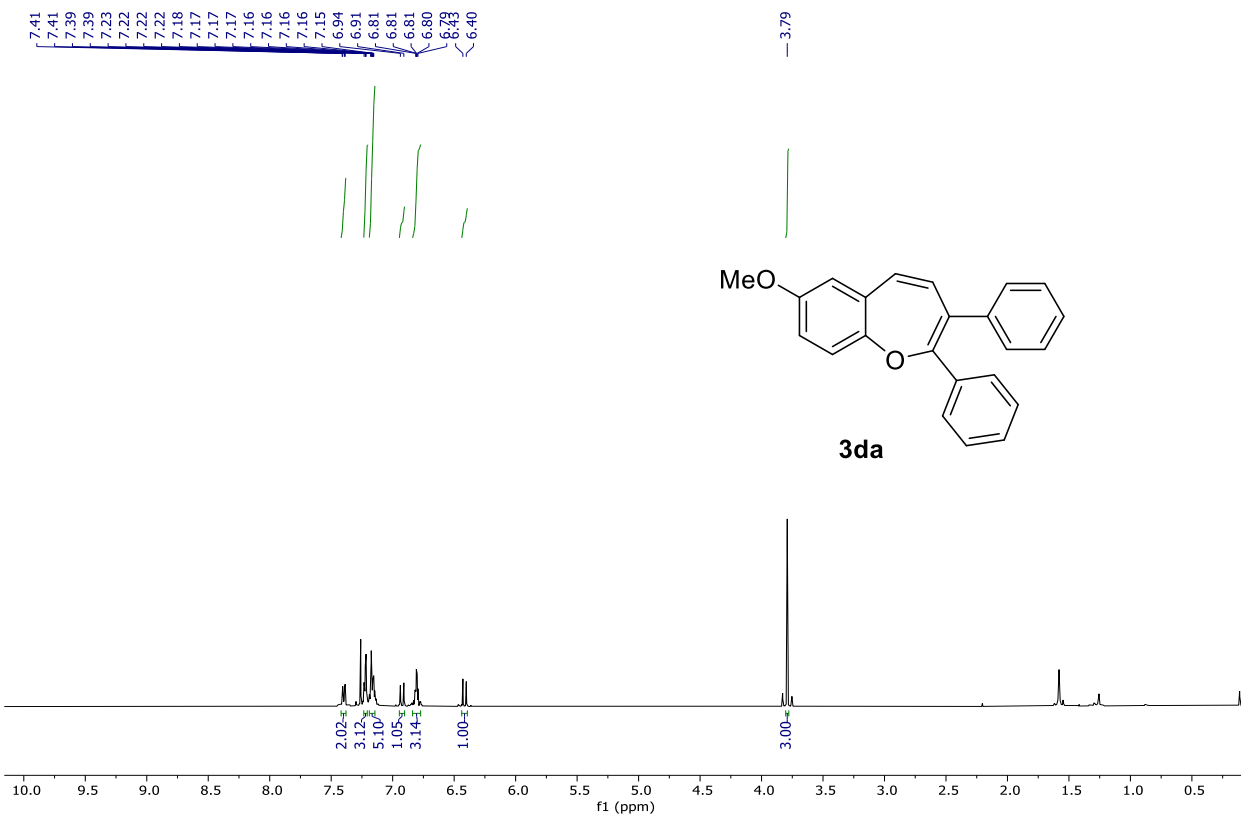
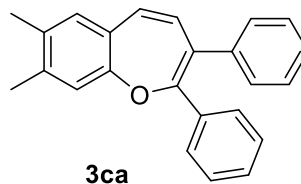
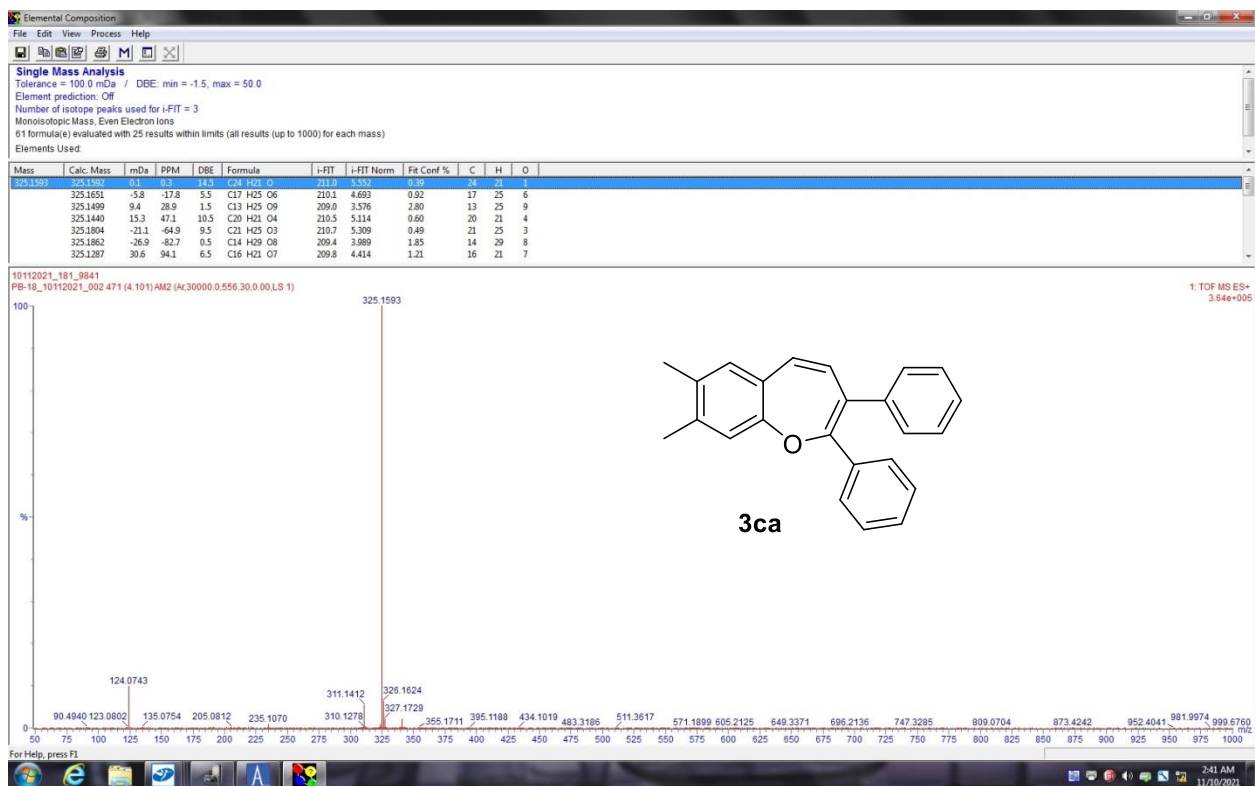
3aa

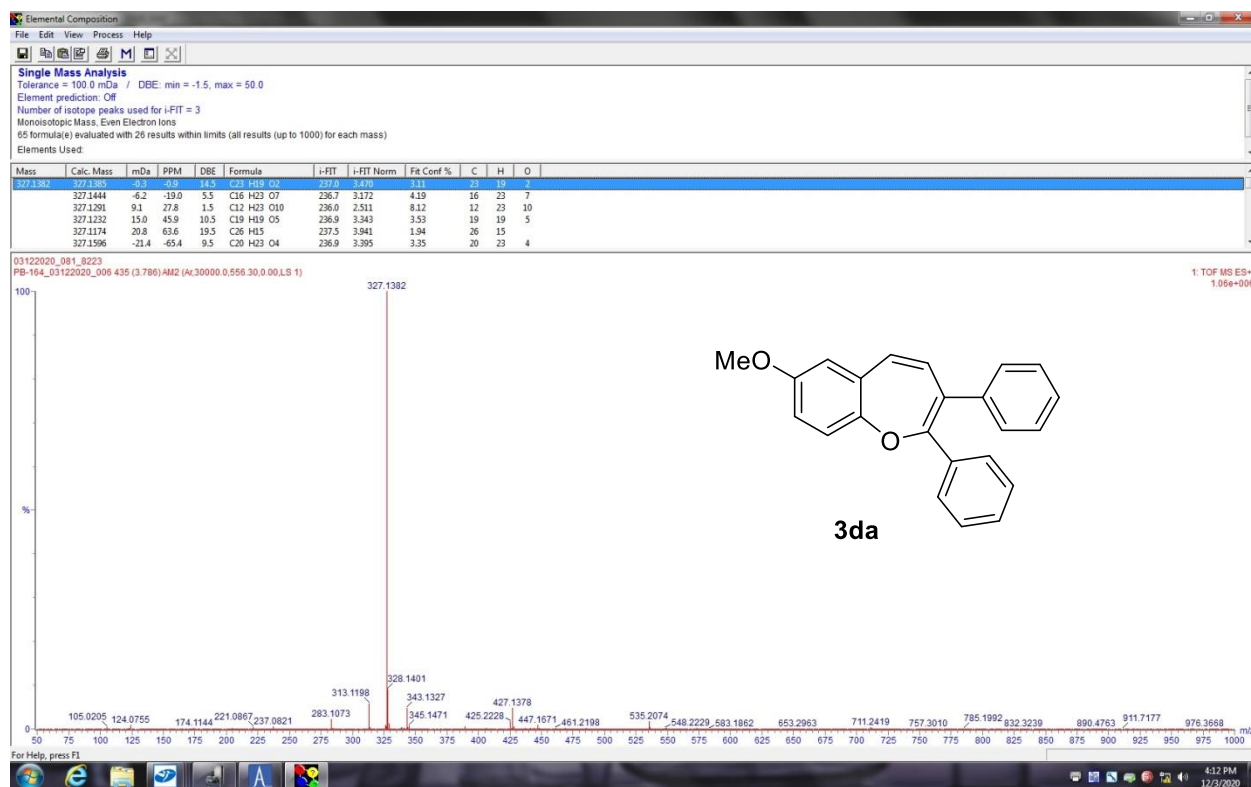
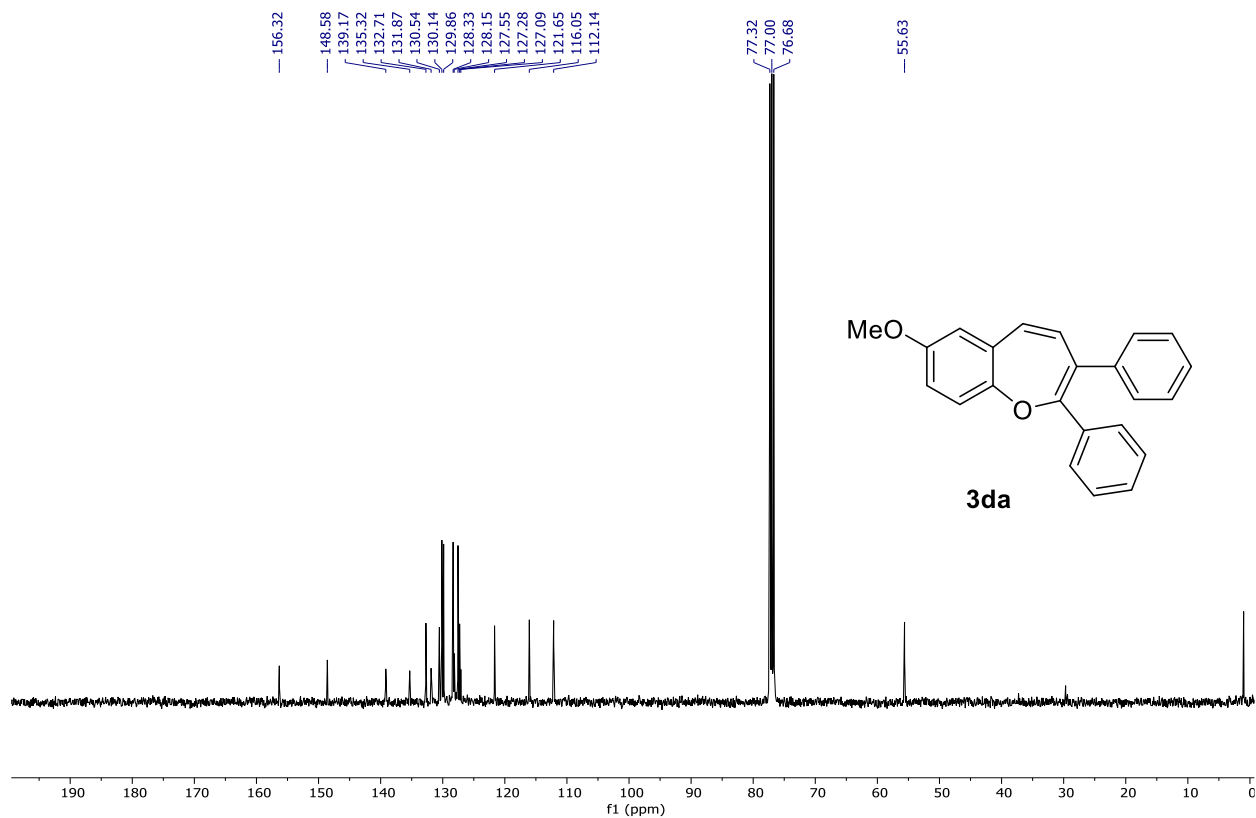


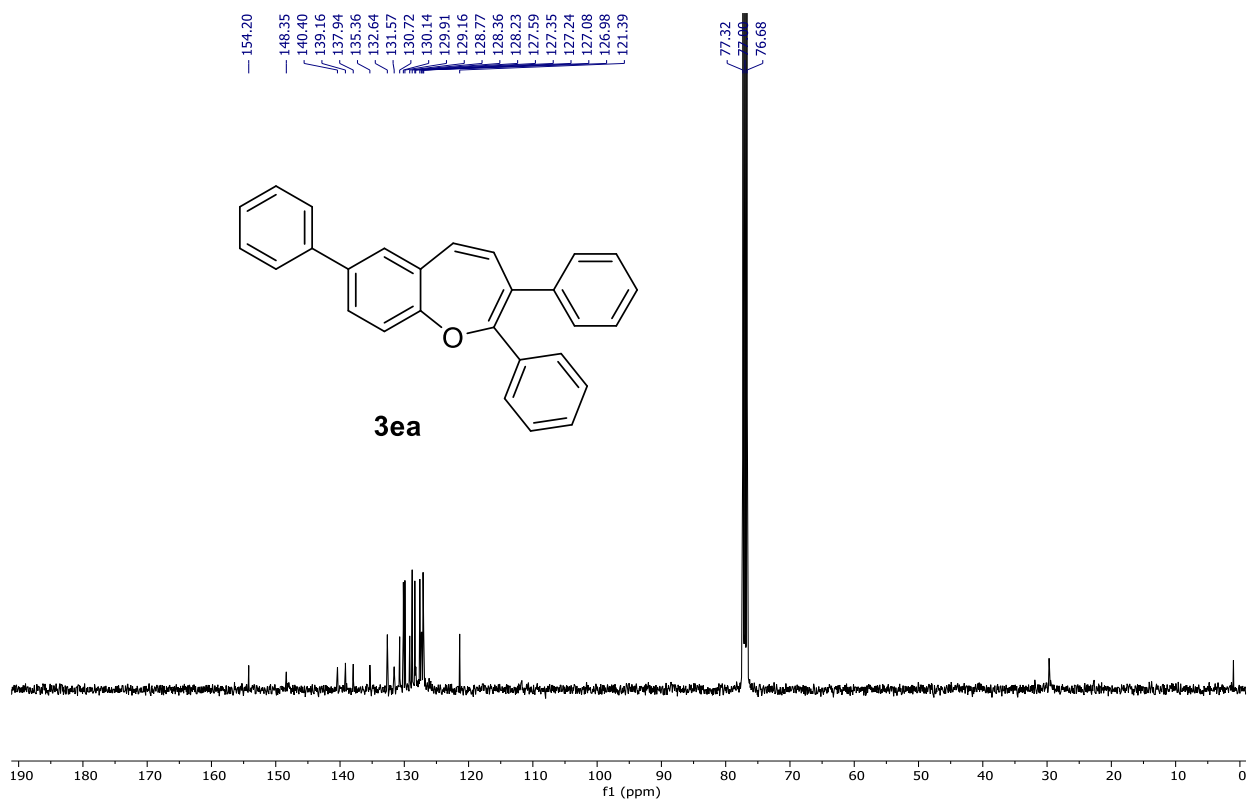
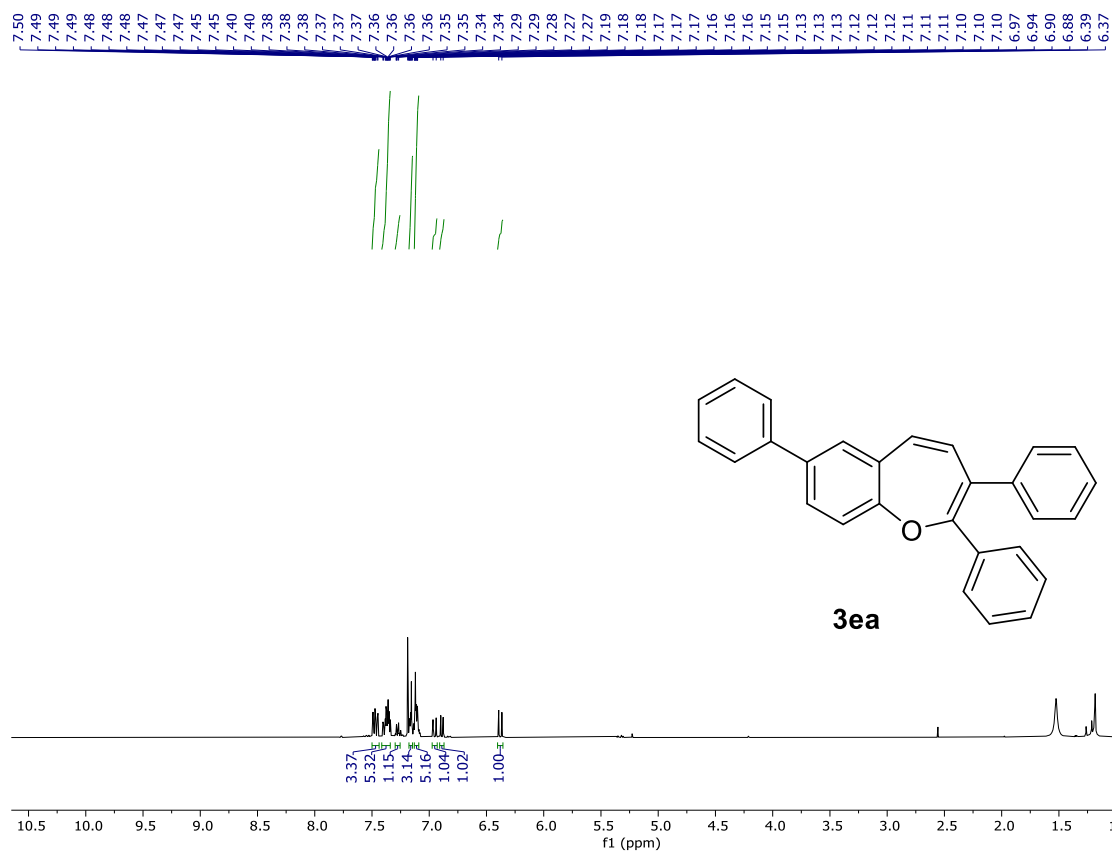


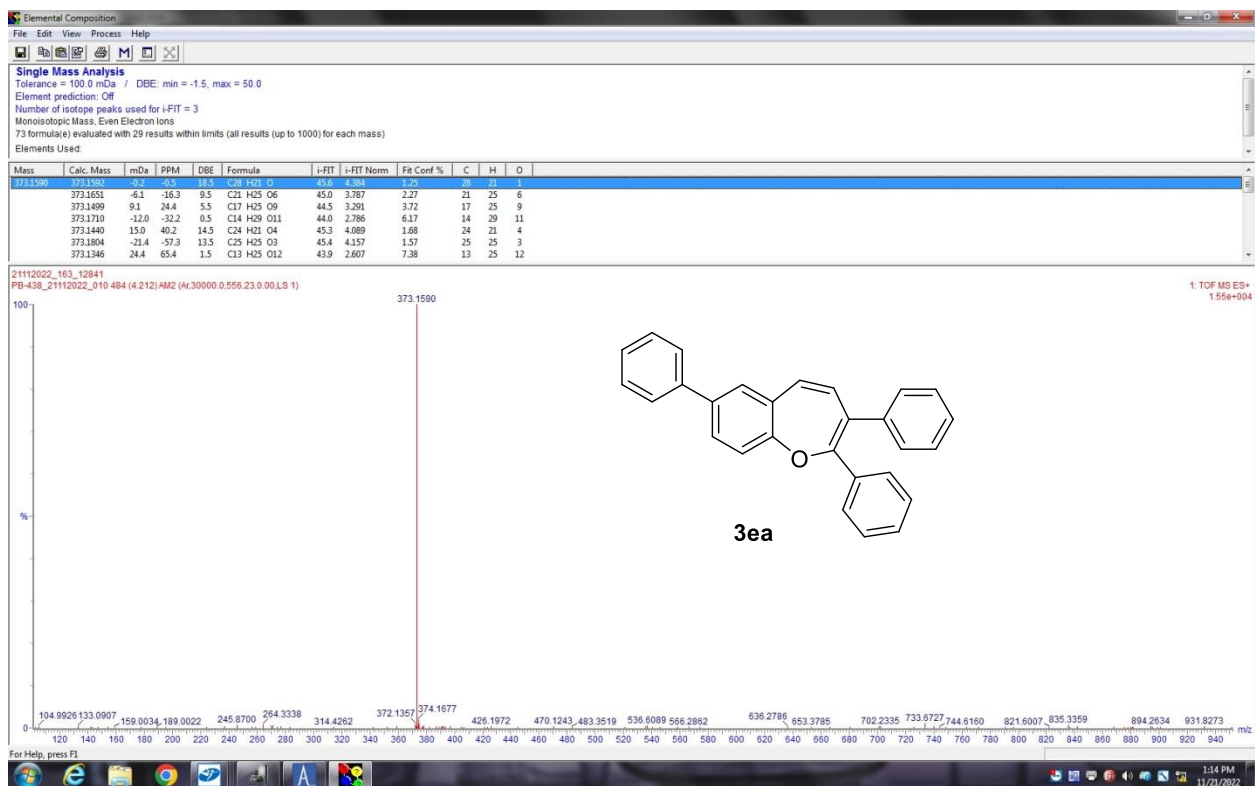




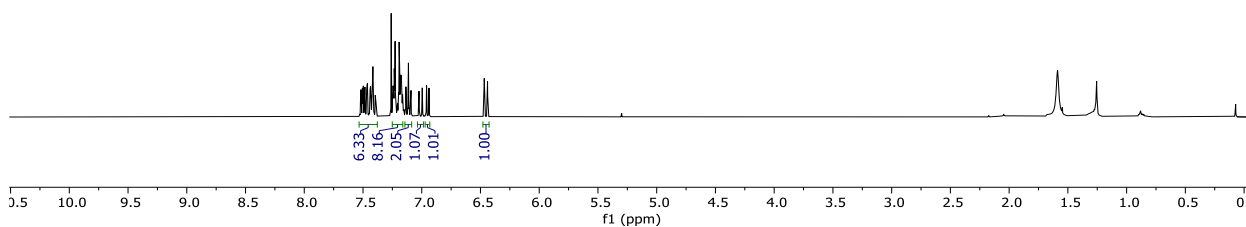
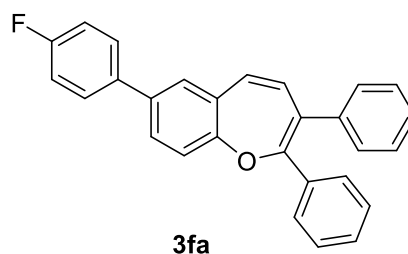
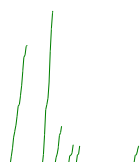


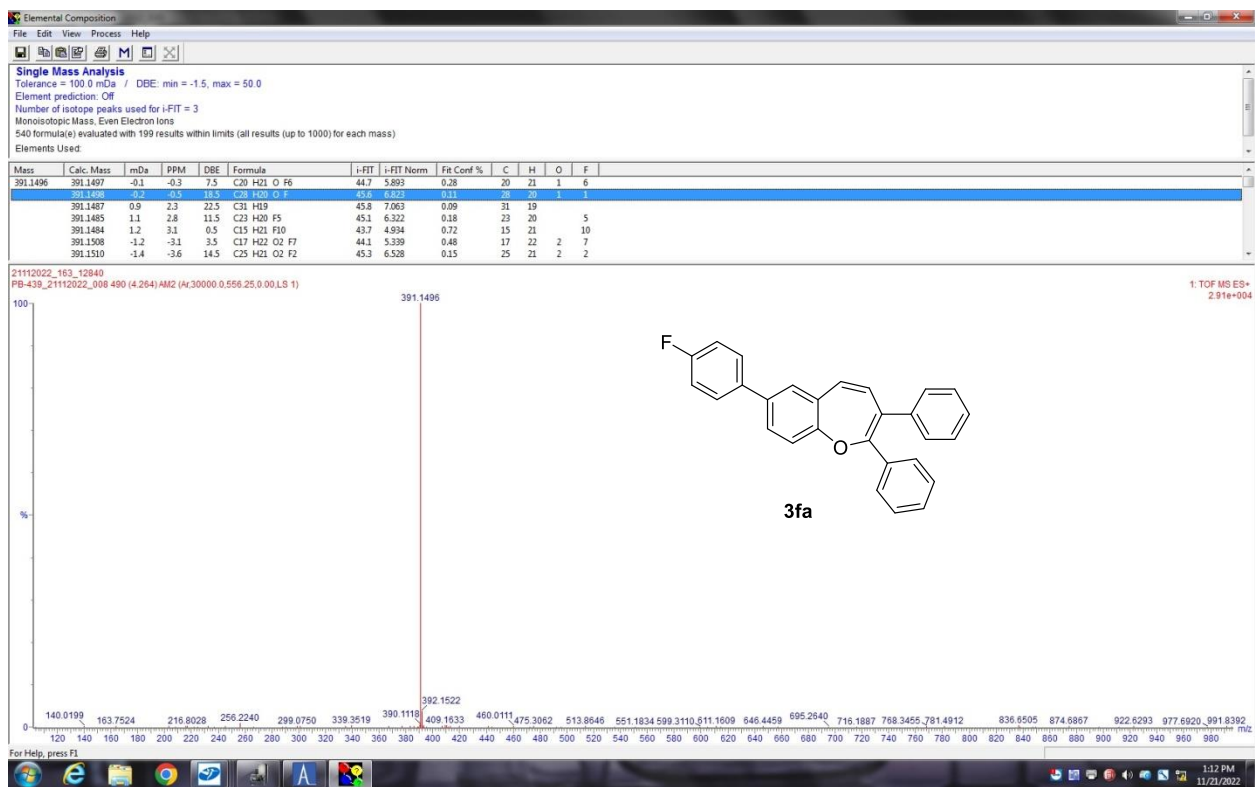
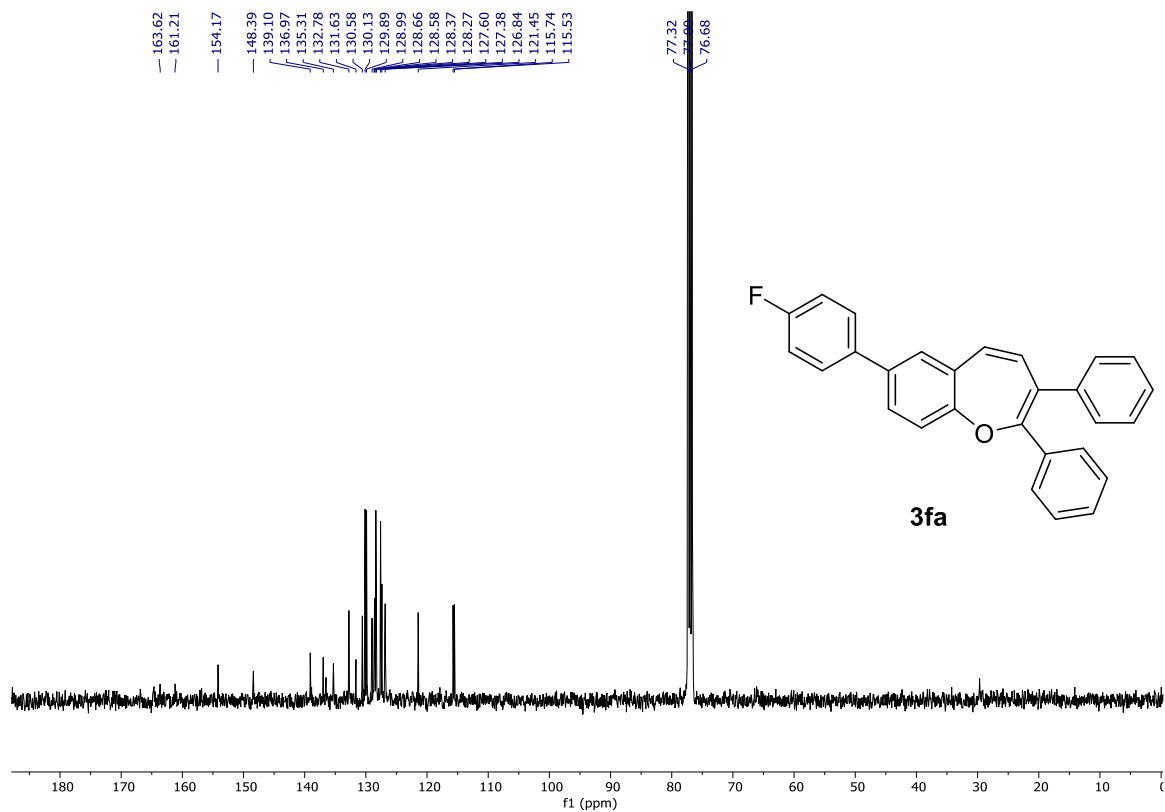




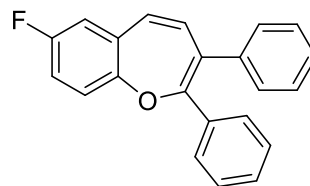
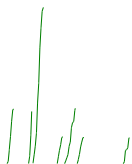


7.52
7.51
7.51
7.50
7.50
7.50
7.49
7.48
7.47
7.46
7.44
7.44
7.43
7.43
7.43
7.42
7.42
7.41
7.40
7.39
7.26
7.25
7.24
7.24
7.24
7.23
7.23
7.22
7.22
7.21
7.21
7.20
7.20
7.19
7.19
7.18
7.18
7.17
7.17
7.17
7.16
7.13
7.13
7.12
7.12
7.11
7.11
7.10
7.09
7.02
7.00
6.96
6.94
6.47
6.44

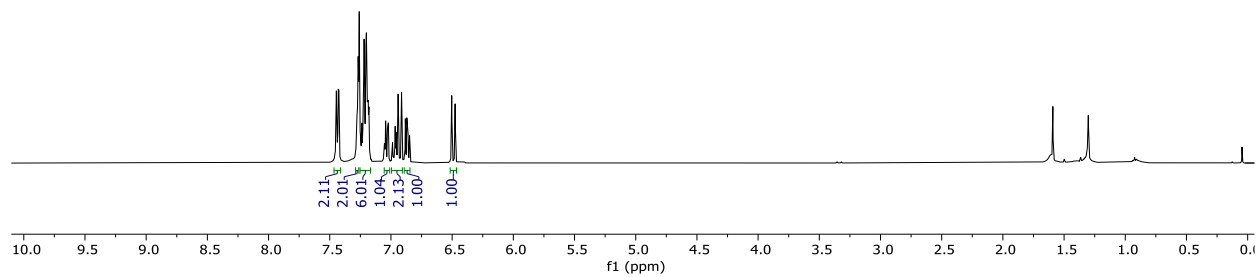




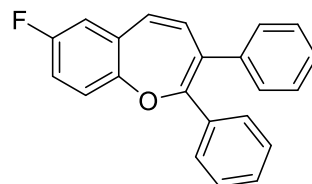
7.45
7.44
7.43
7.43
7.29
7.28
7.28
7.27
7.27
7.26
7.26
7.25
7.25
7.24
7.24
7.23
7.23
7.22
7.22
7.21
7.21
7.20
7.20
7.19
7.19
7.18
7.18
7.17
7.17
7.05
7.04
7.03
7.02
6.99
6.98
6.97
6.96
6.95
6.94
6.94
6.91
6.88
6.87
6.86
6.85
6.50
6.46



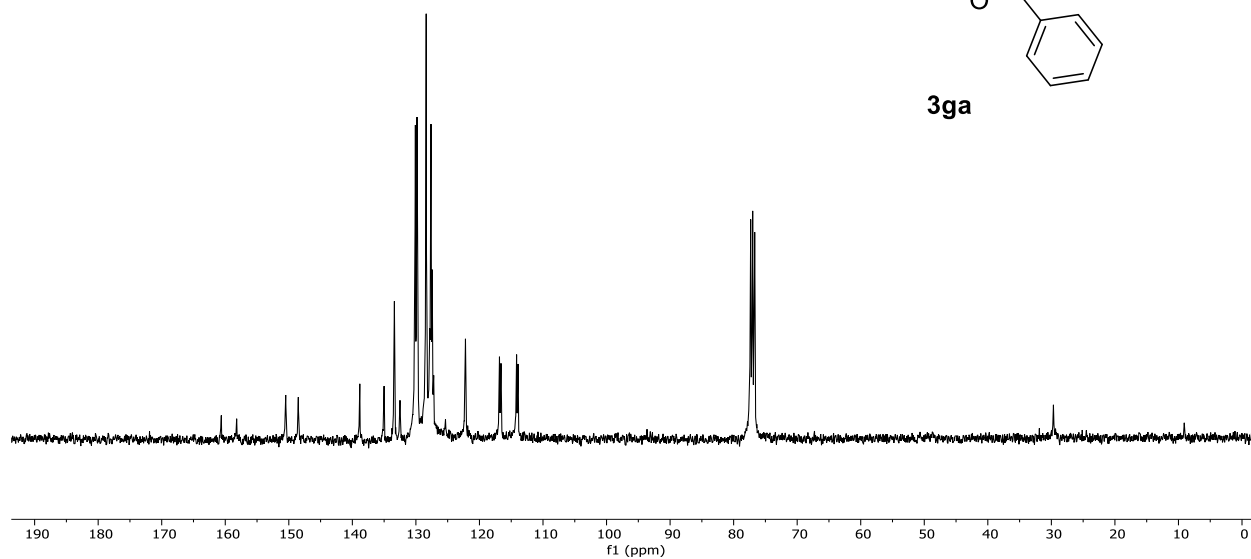
3ga

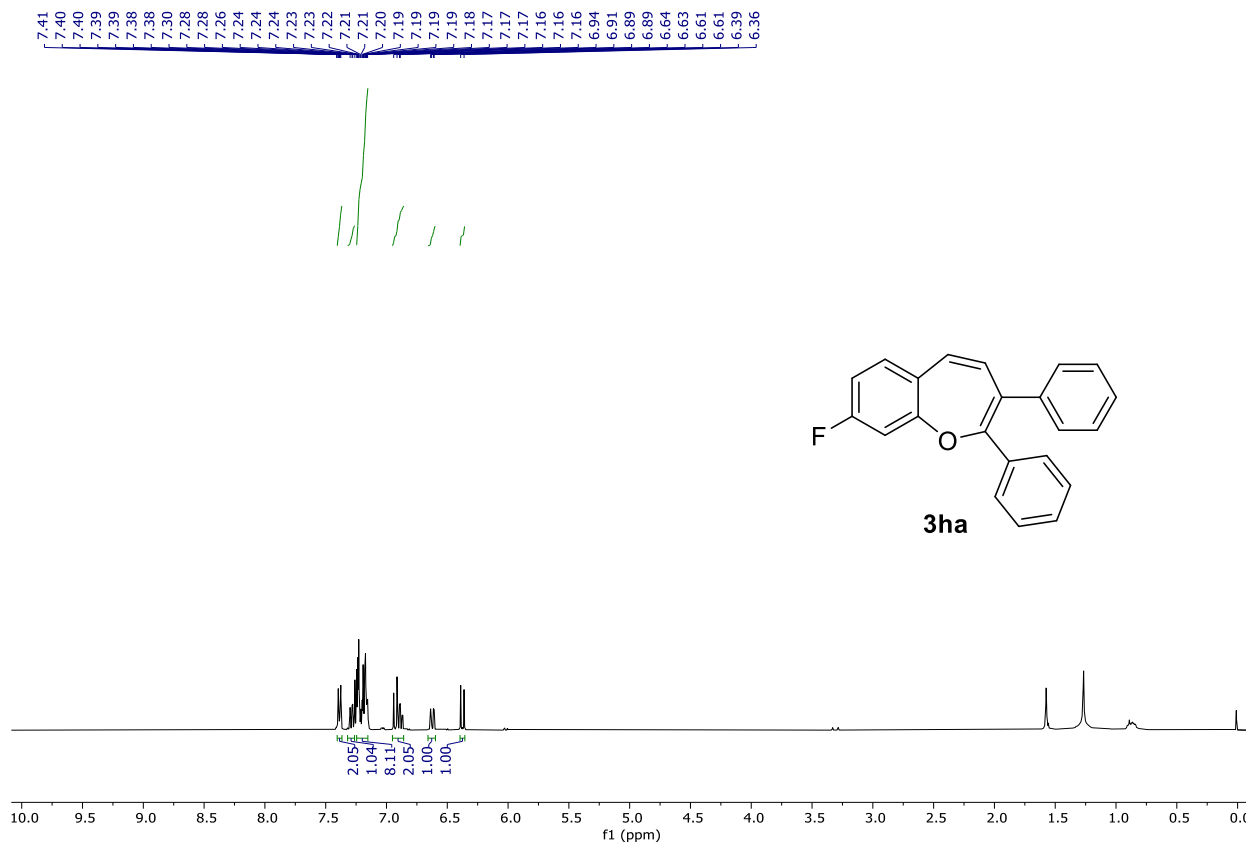
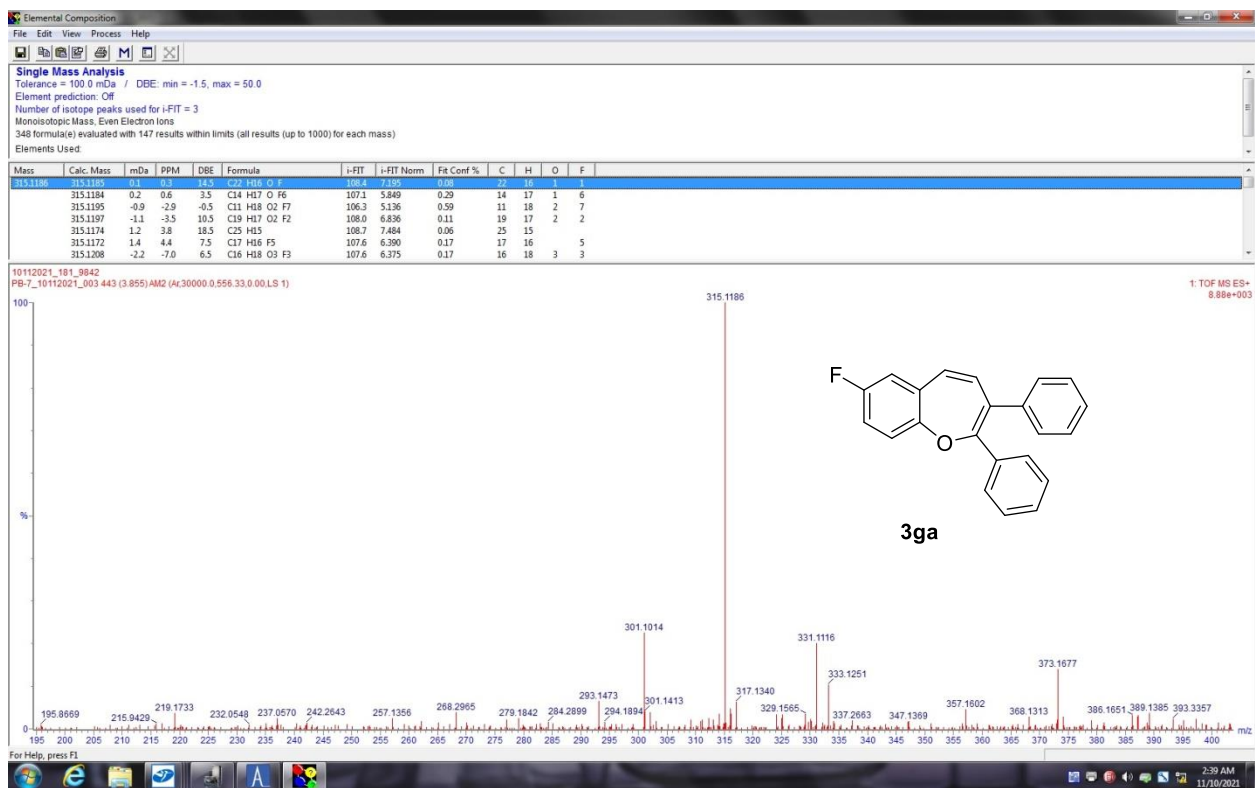


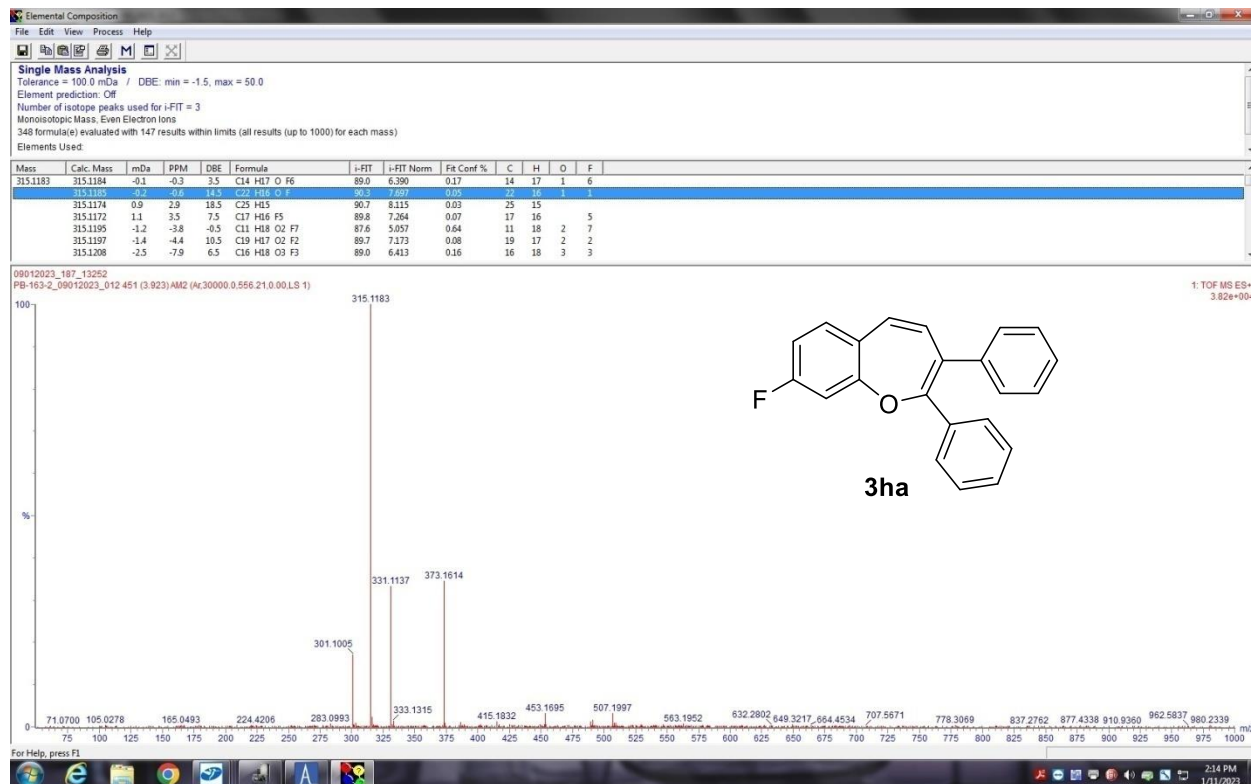
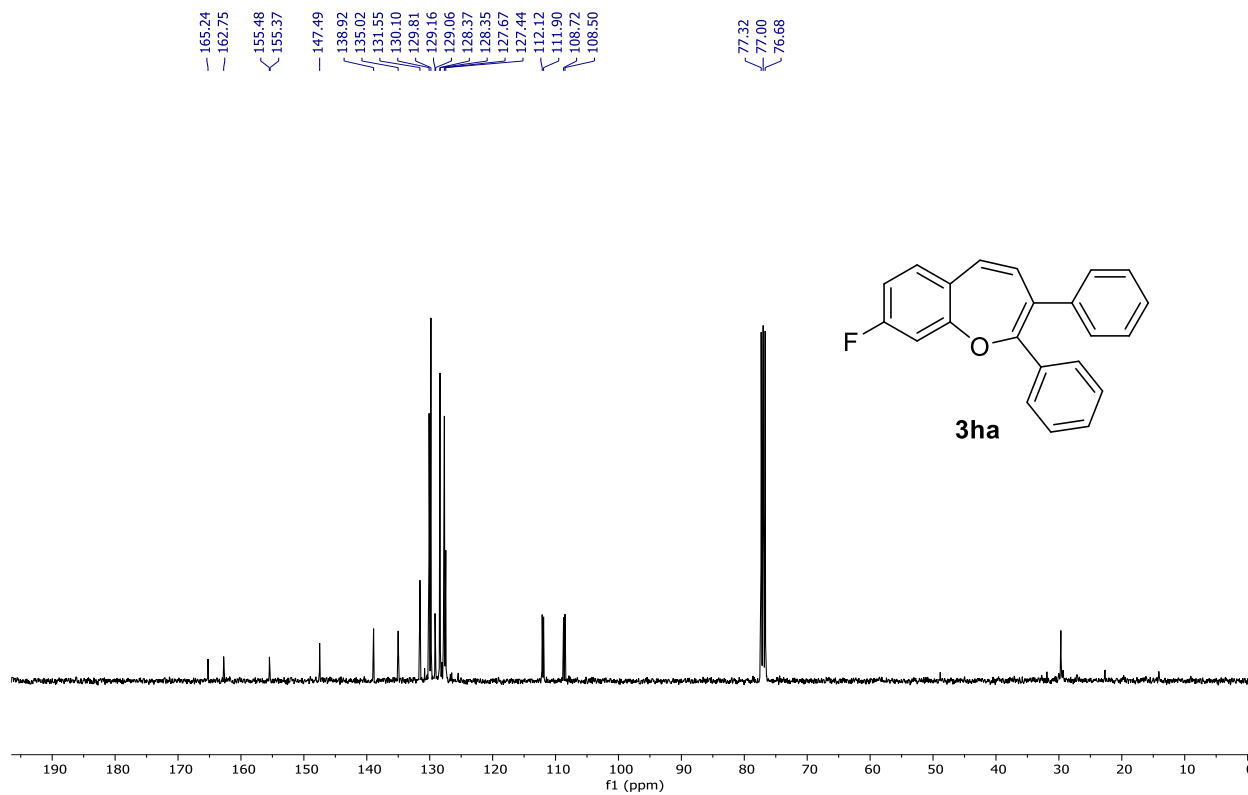
160.63
158.21
150.49
148.52
138.84
135.01
133.39
132.51
130.09
129.83
129.69
128.38
127.83
127.63
127.44
122.21
122.12
116.85
114.16
113.92
77.32
77.00
76.69

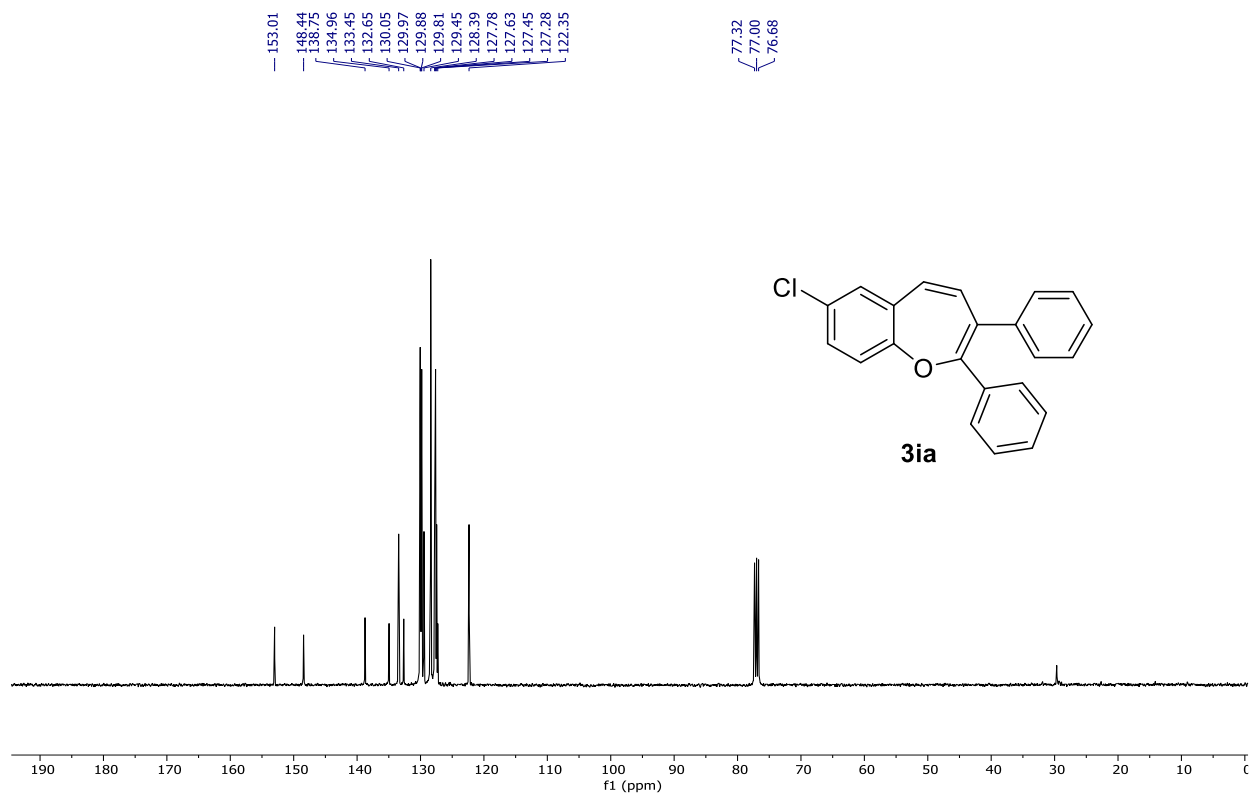
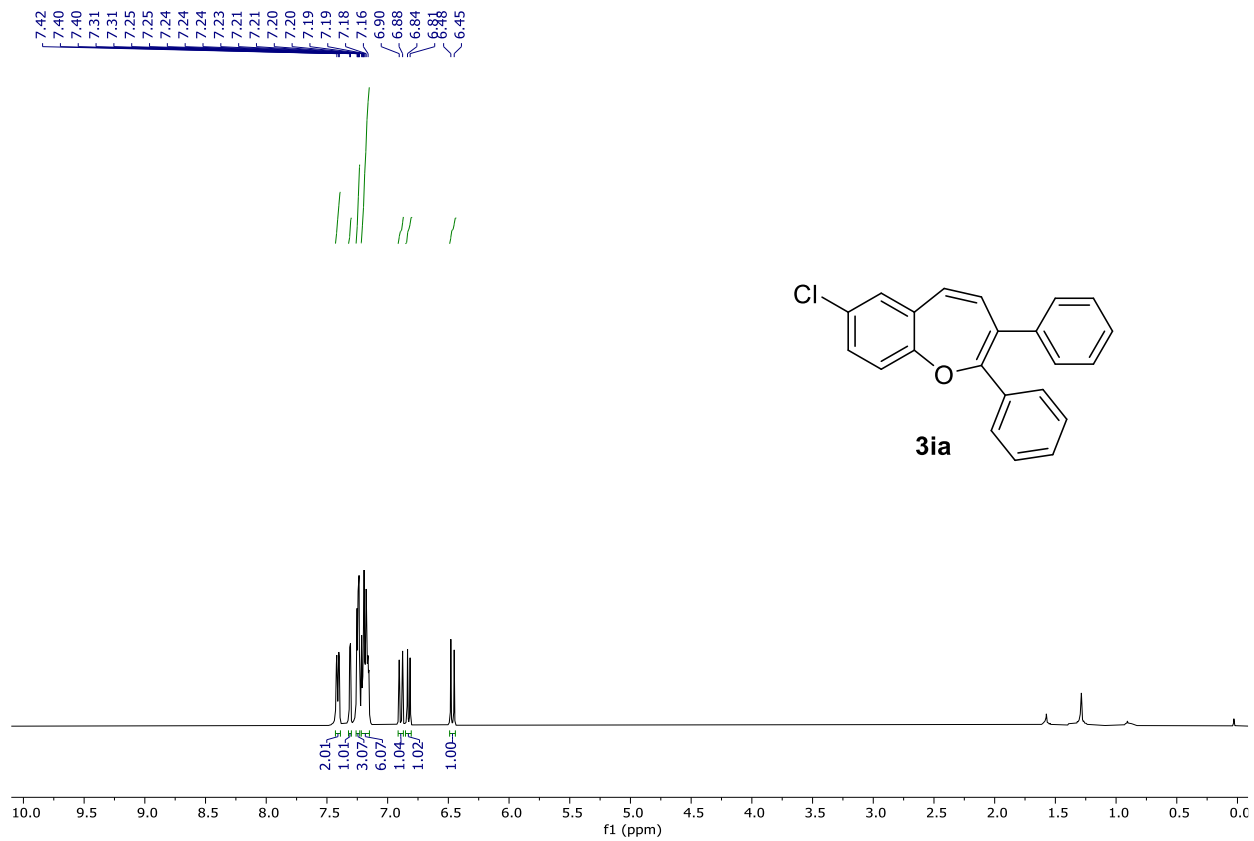


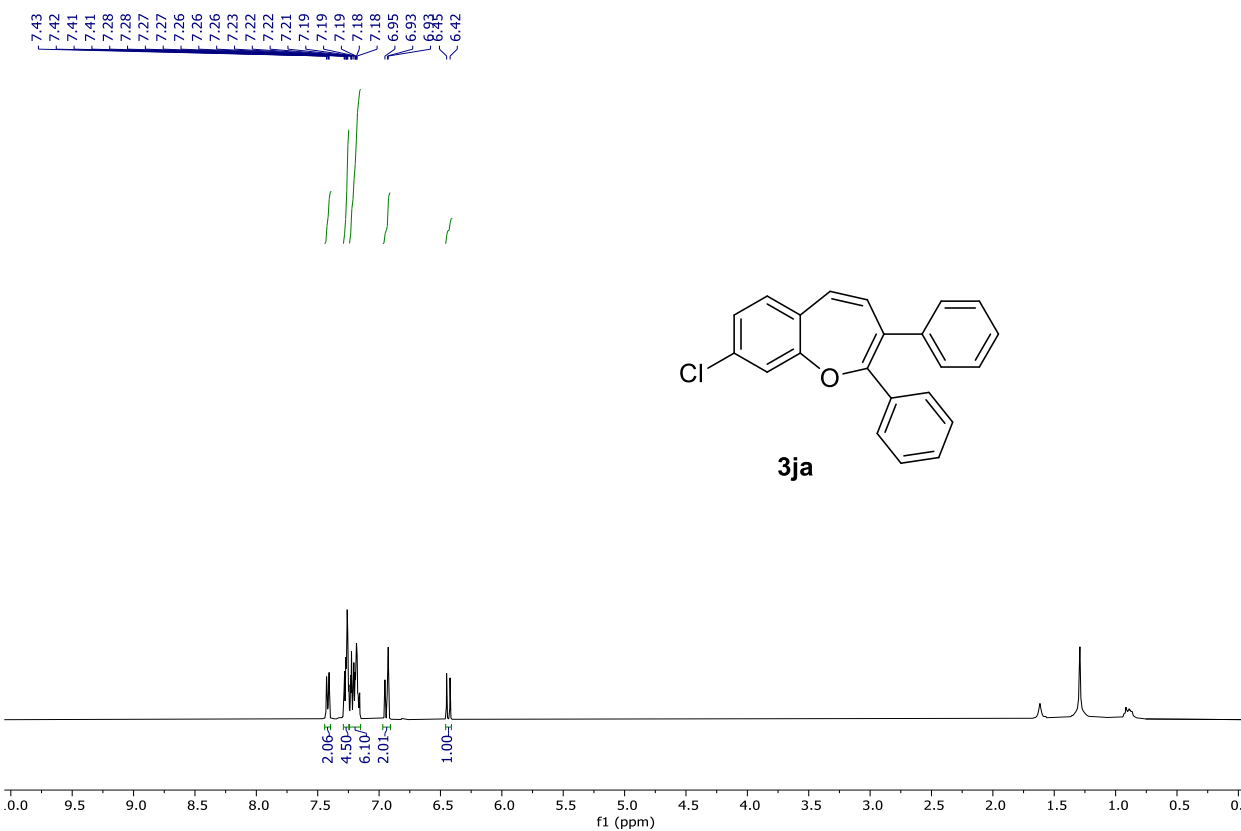
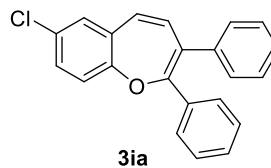
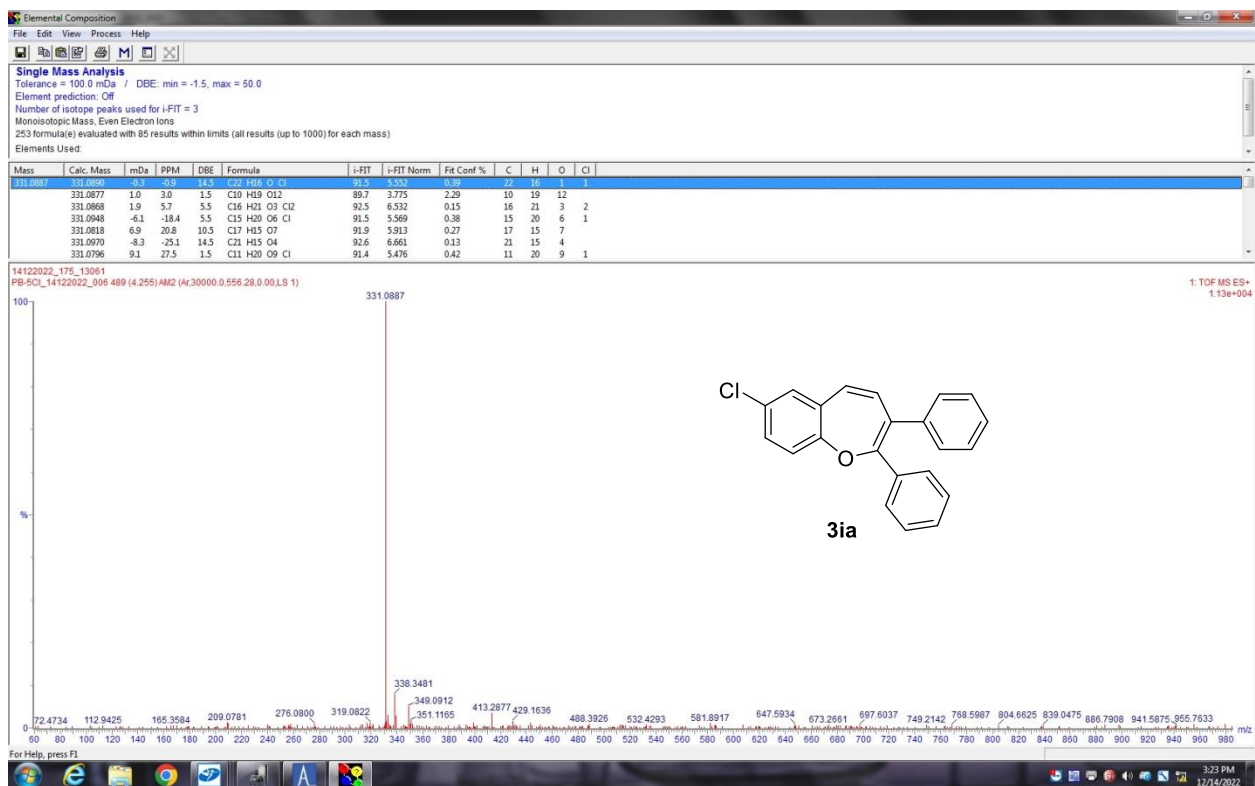
3ga

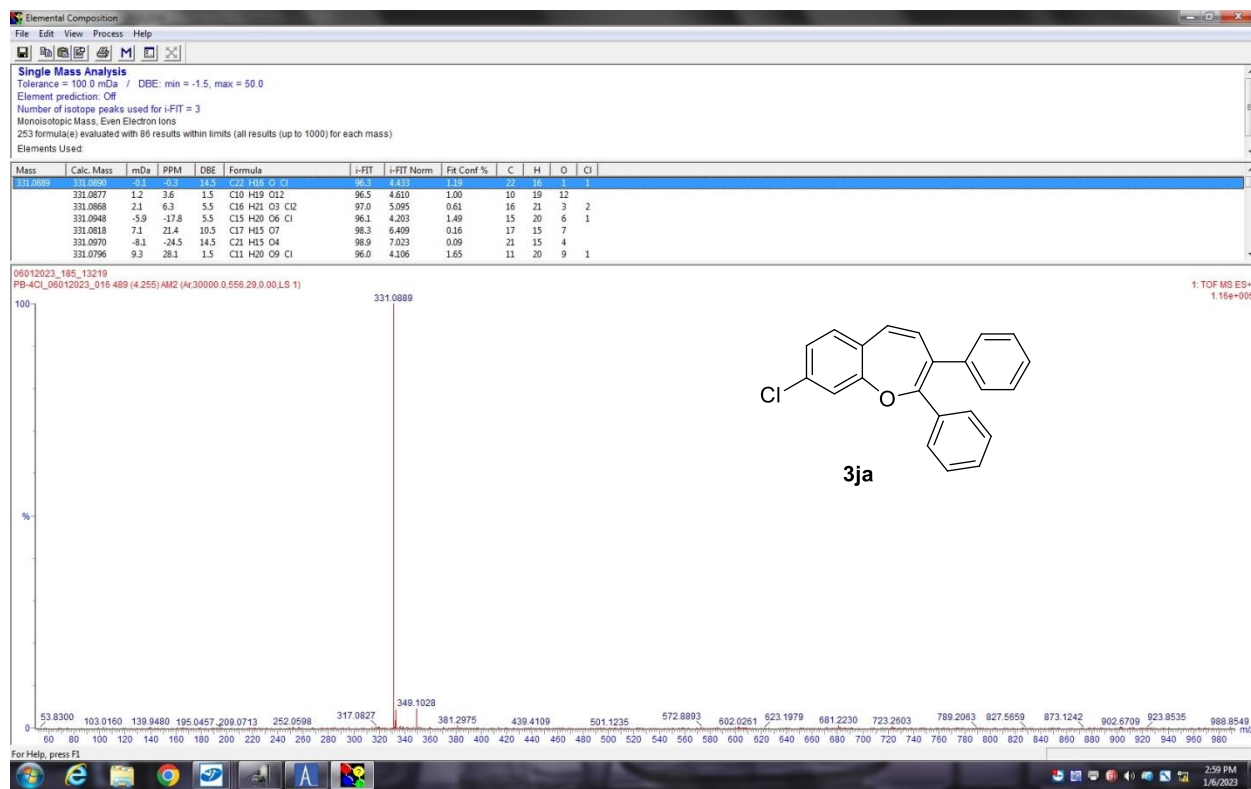
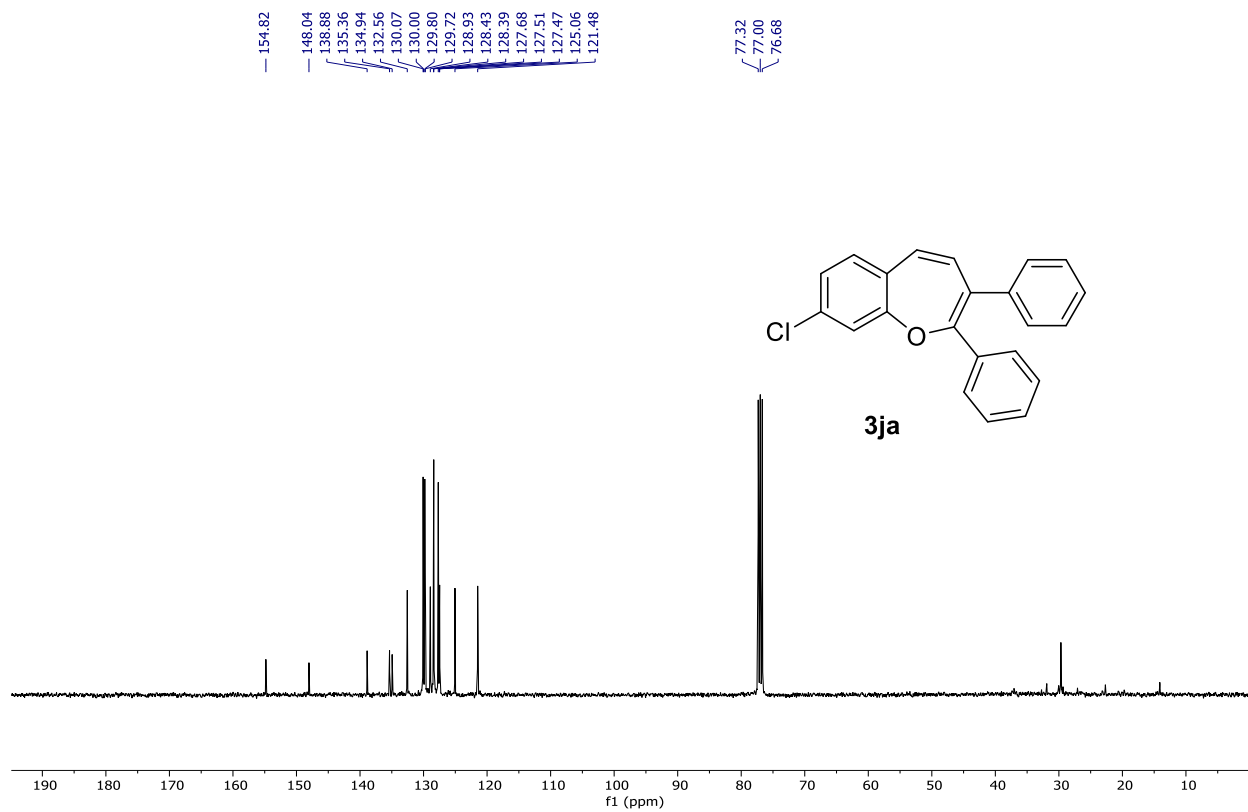


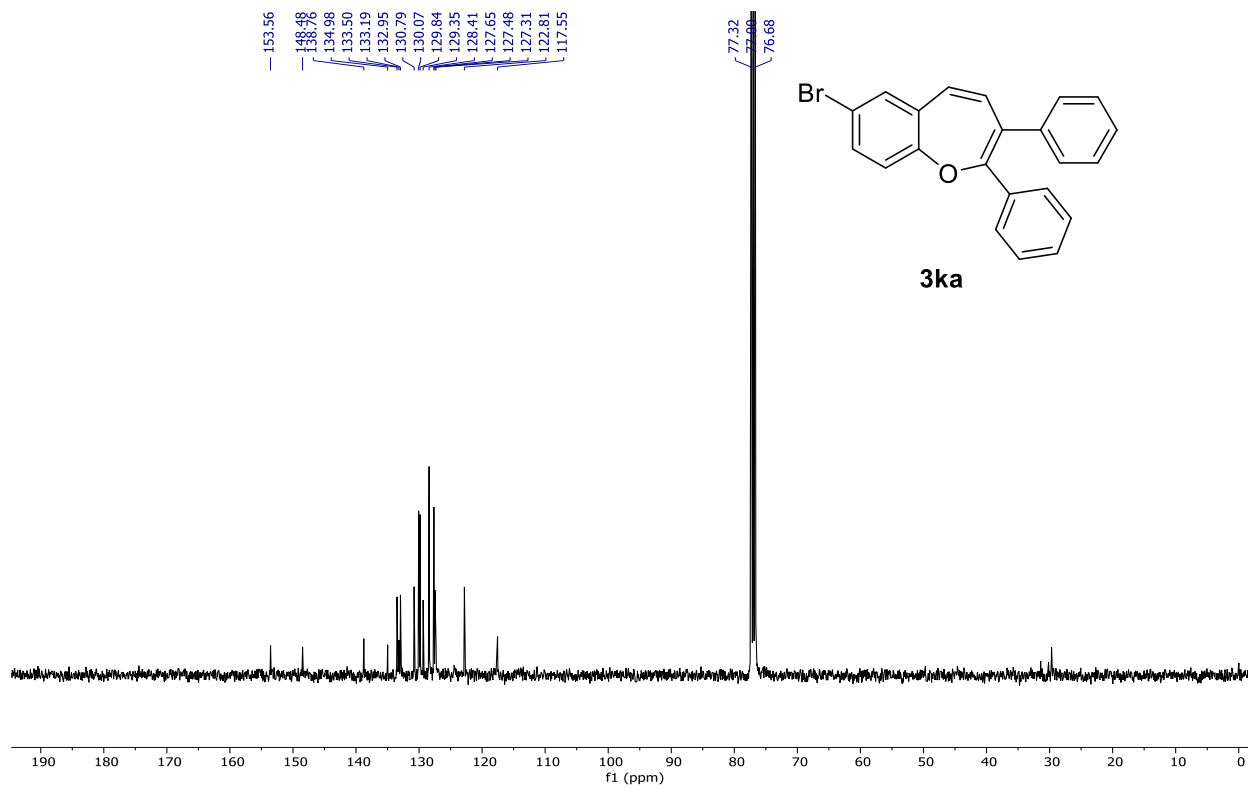
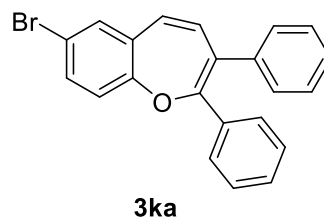
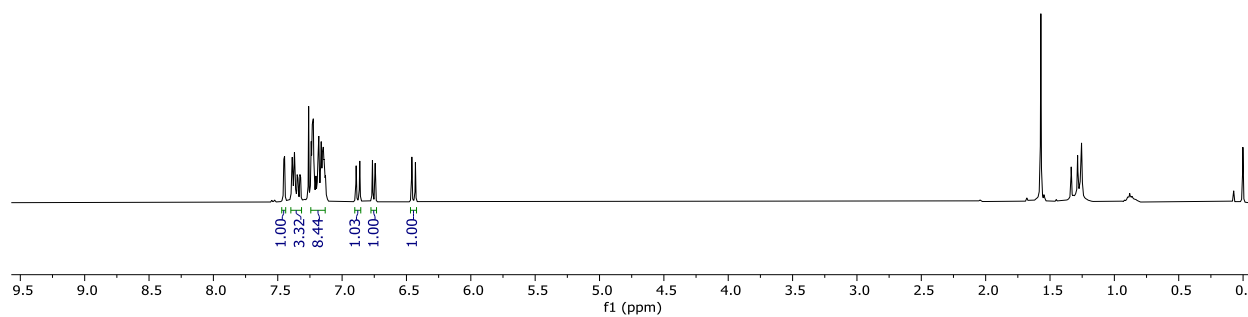
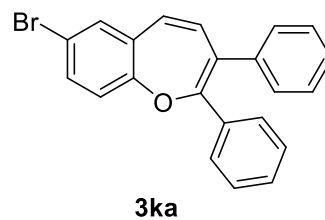
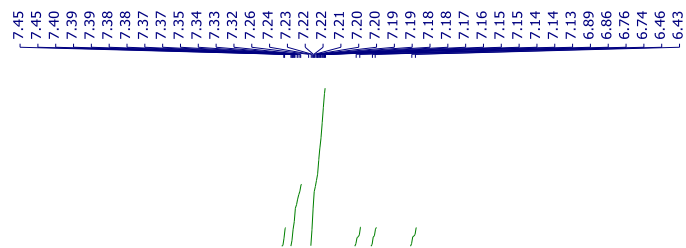


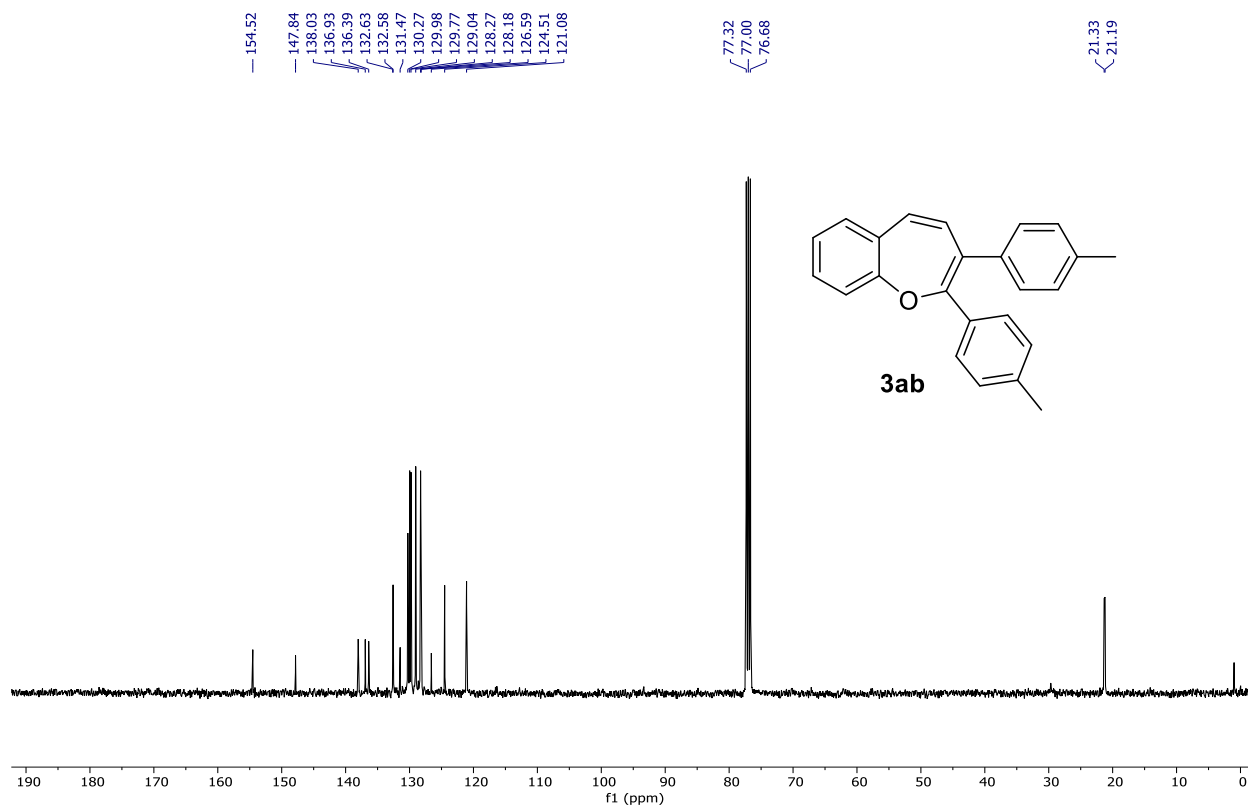
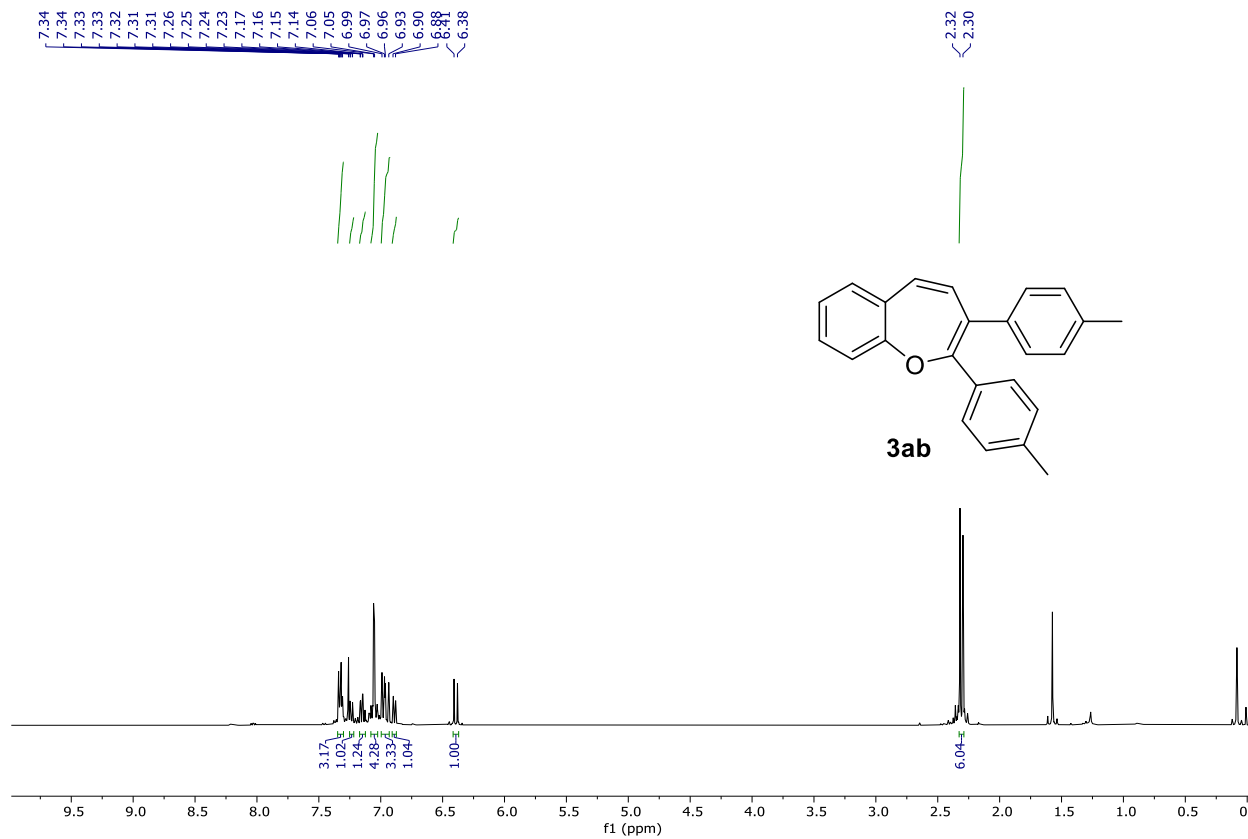


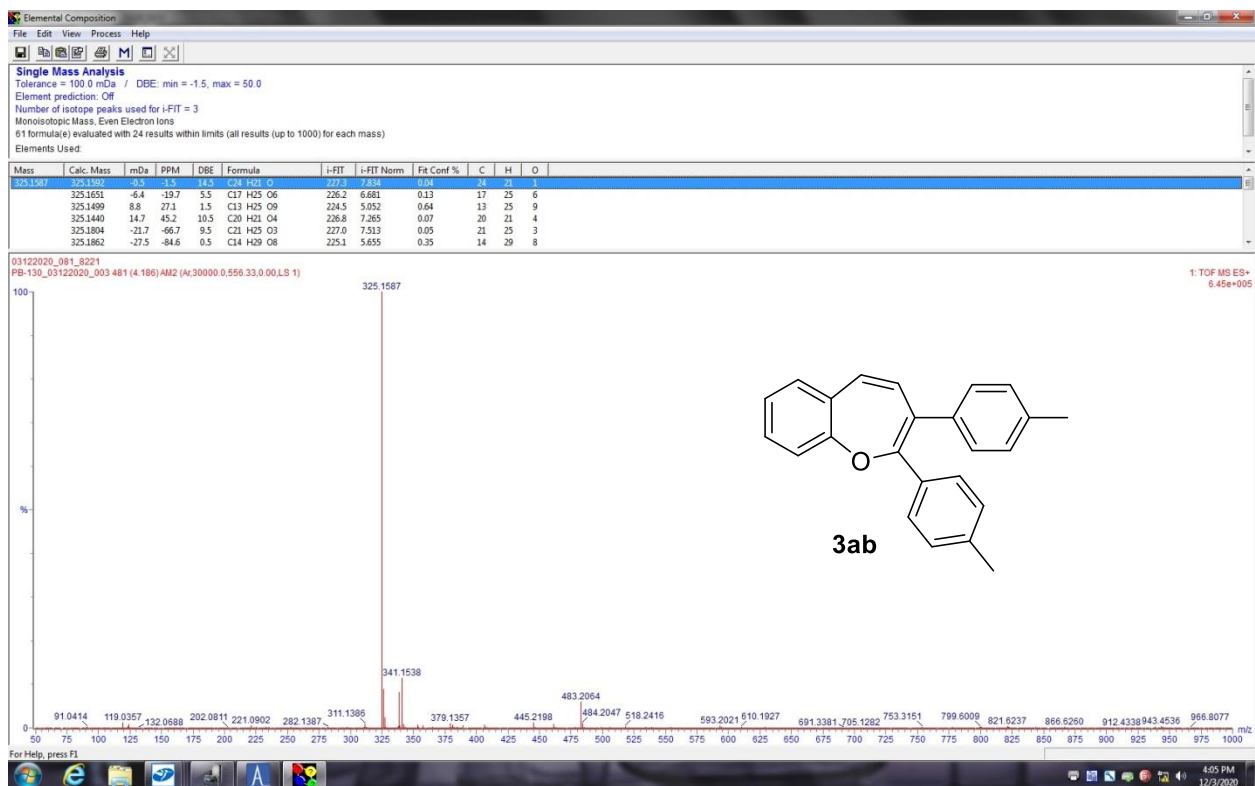


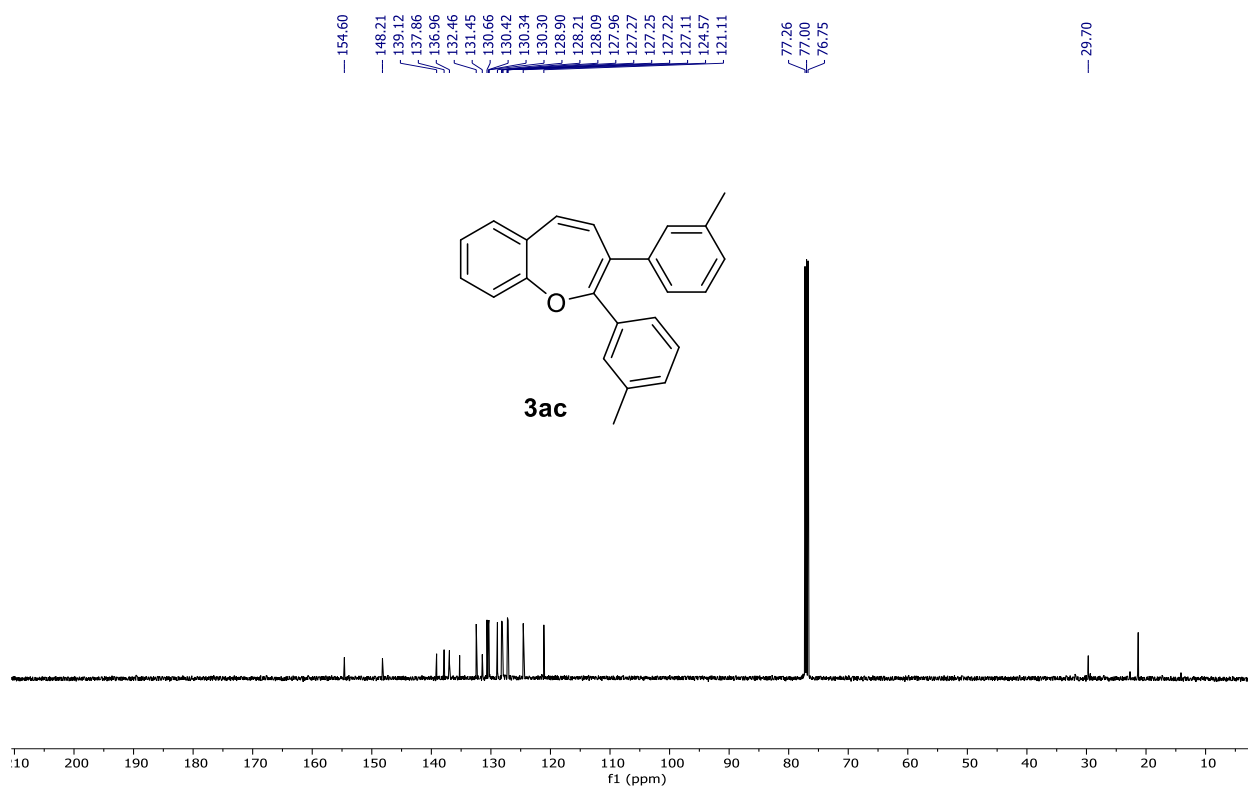
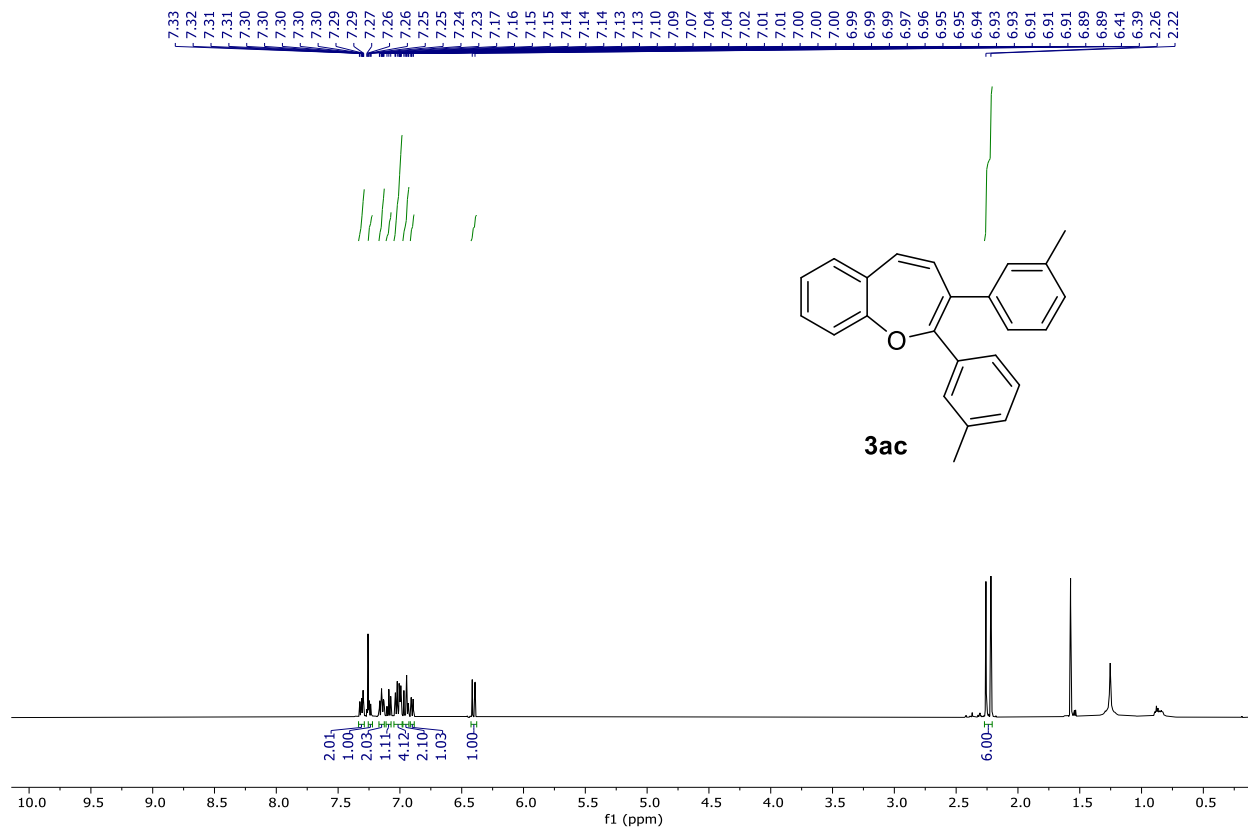


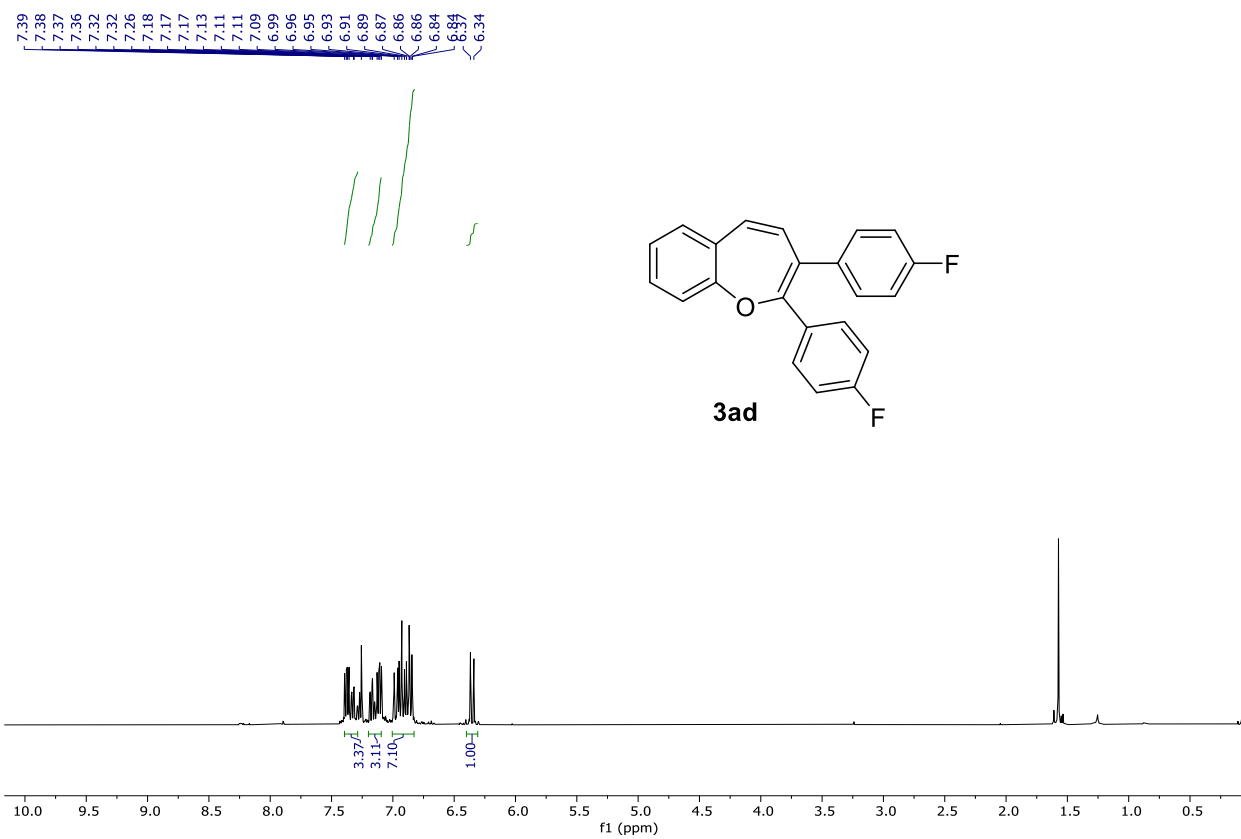
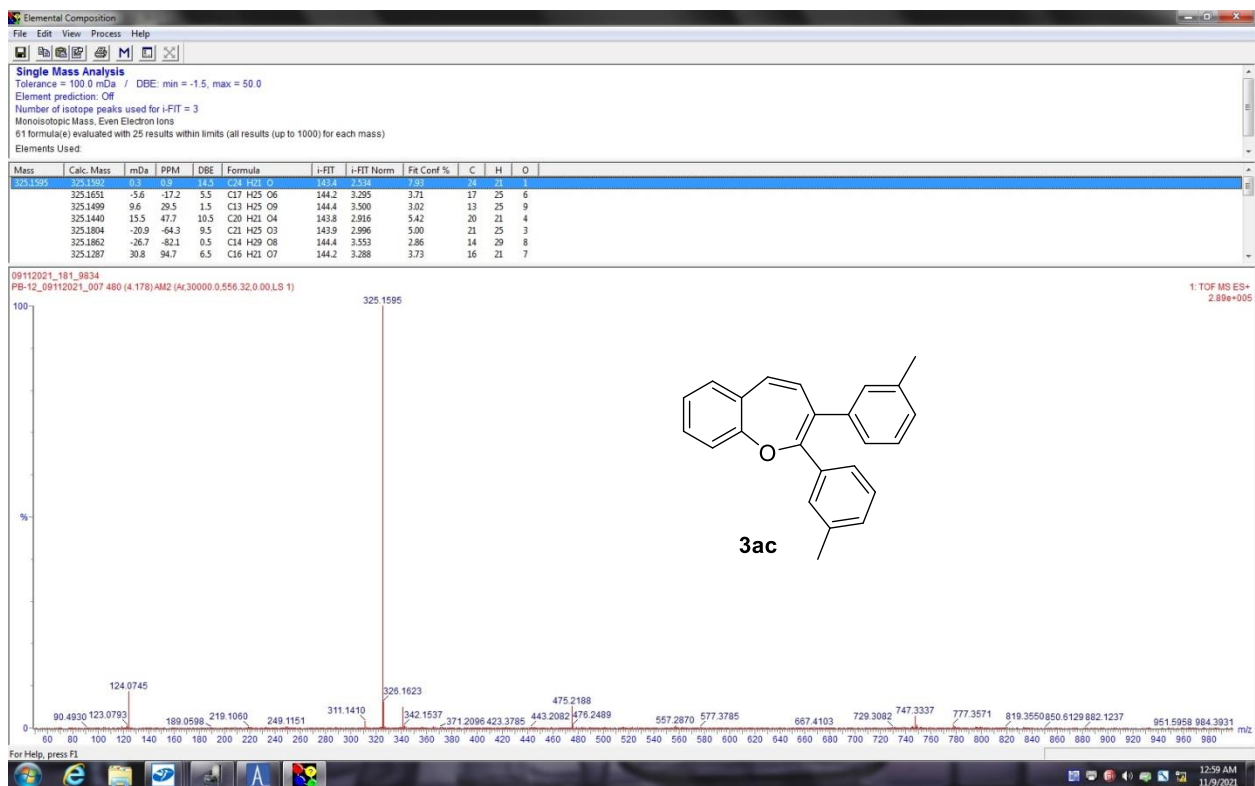


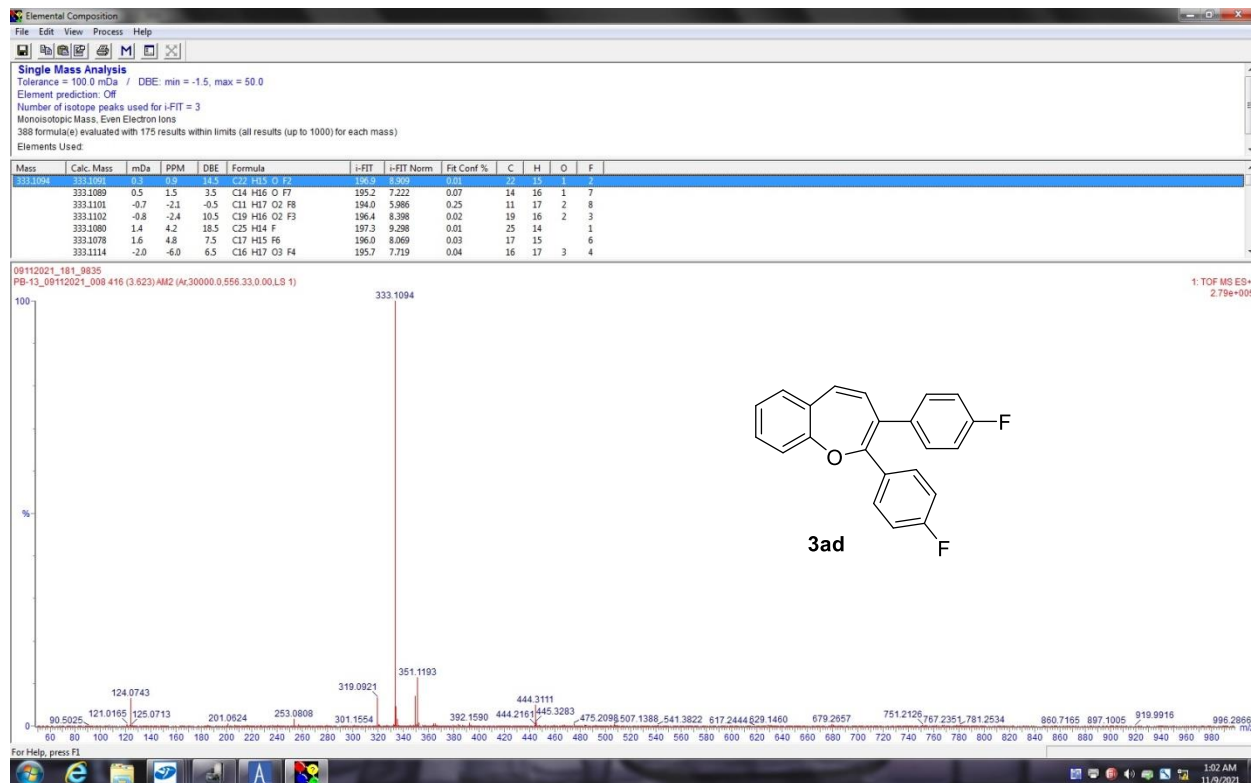
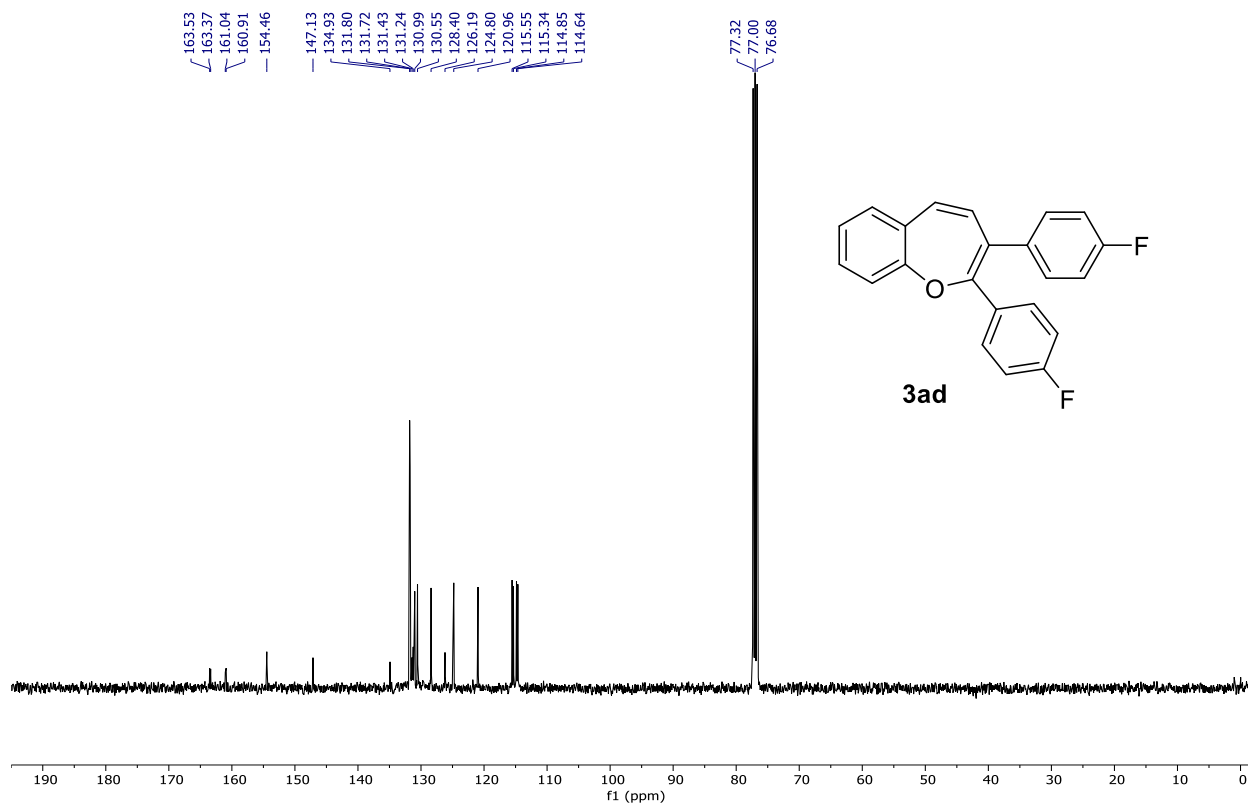




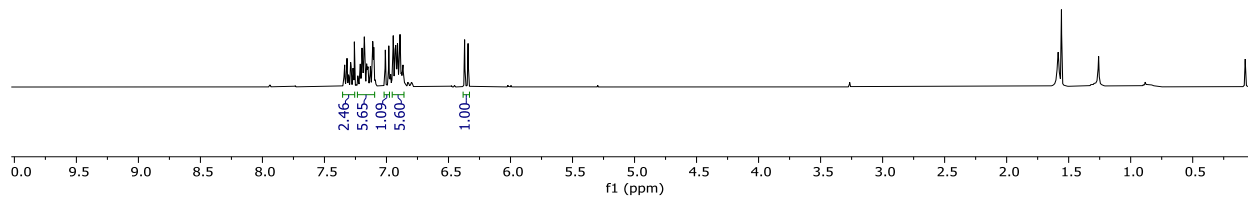
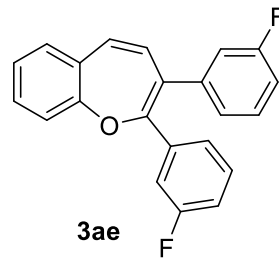
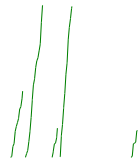




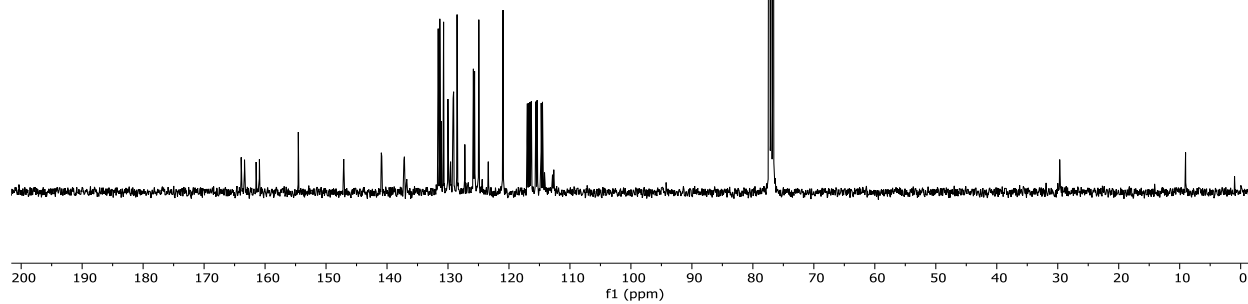
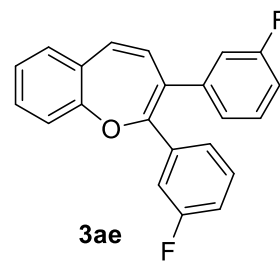


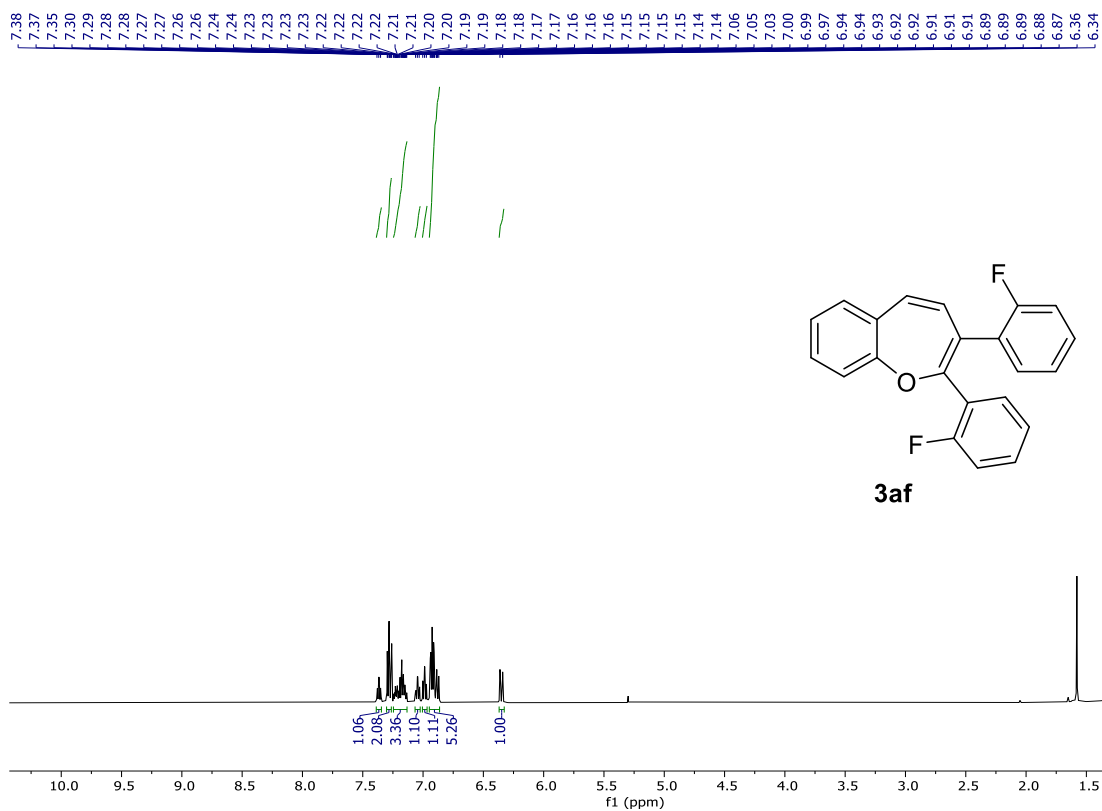
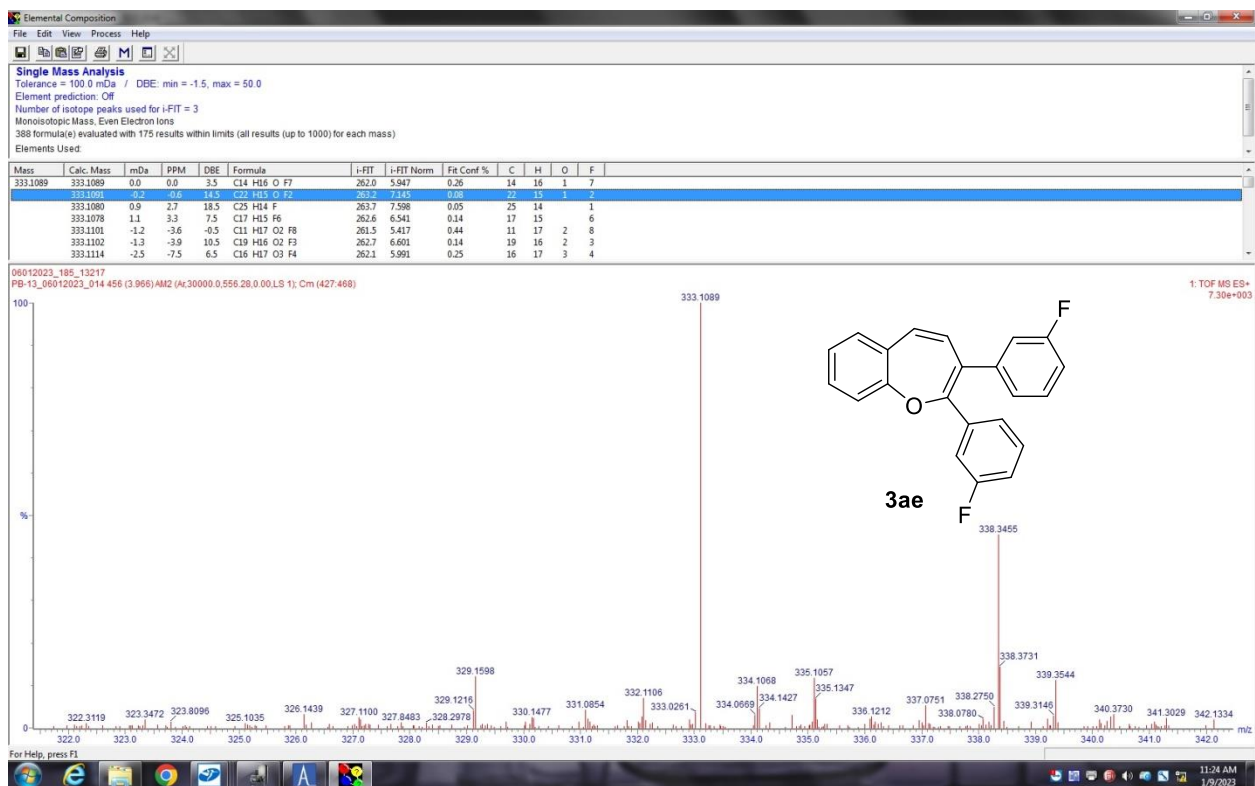


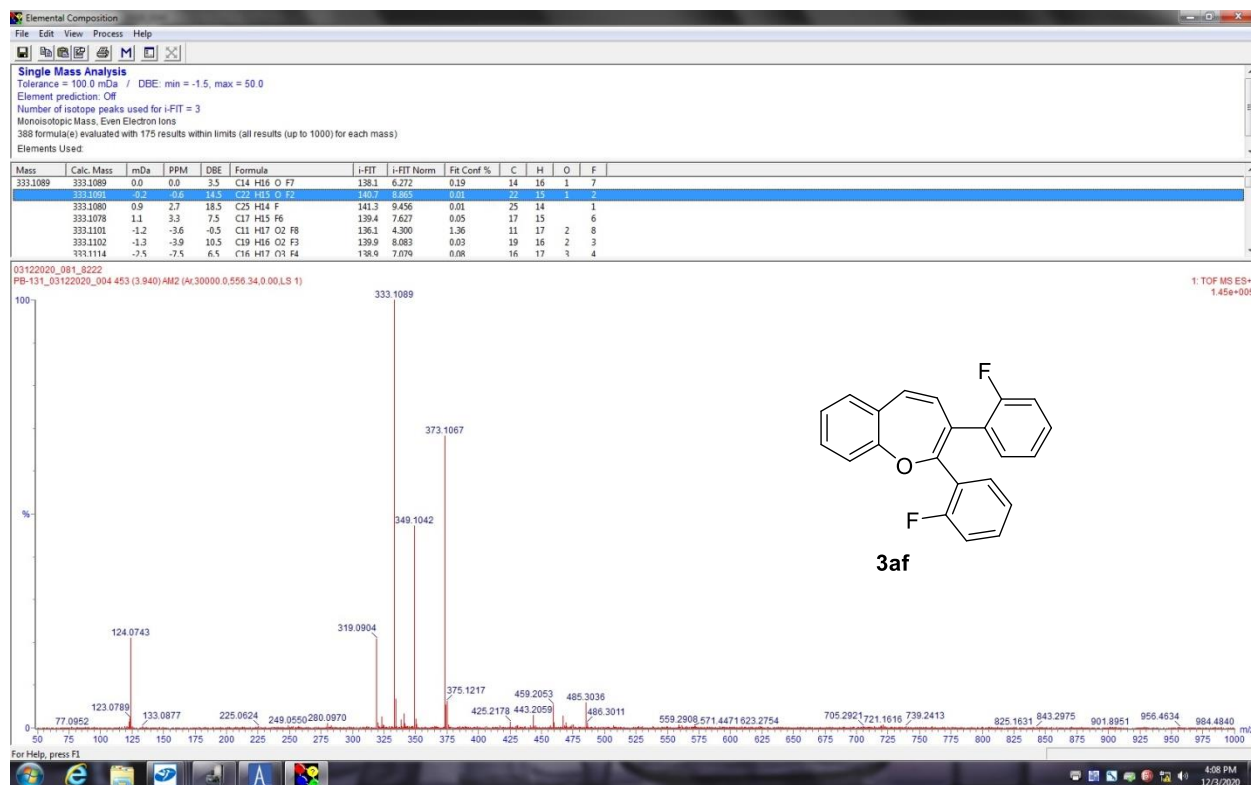
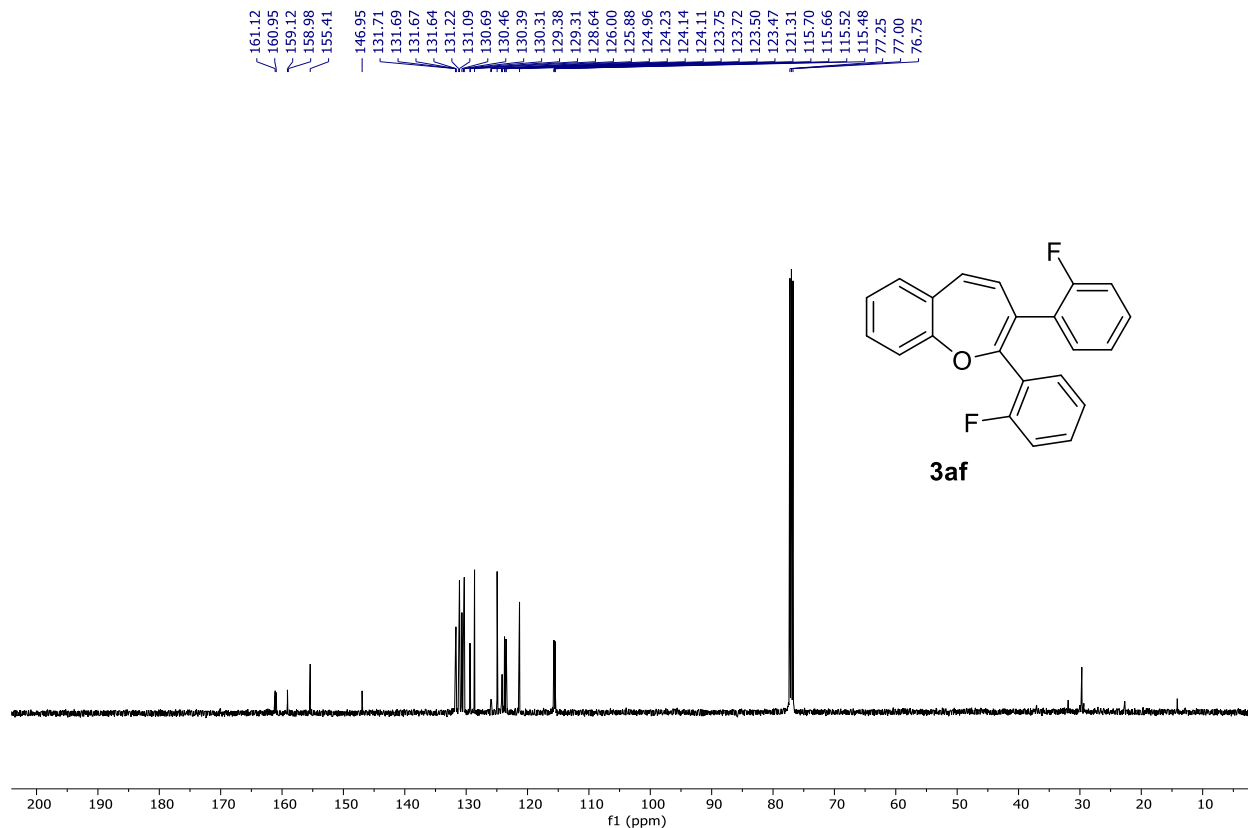
7.34
7.34
7.32
7.32
7.31
7.31
7.30
7.29
7.28
7.27
7.27
7.26
7.23
7.23
7.22
7.21
7.21
7.20
7.20
7.19
7.19
7.18
7.18
7.17
7.16
7.16
7.16
7.15
7.15
7.14
7.14
7.13
7.12
7.11
7.11
7.10
7.10
7.01
6.98
6.95
6.95
6.95
6.94
6.93
6.93
6.92
6.92
6.91
6.91
6.90
6.89
6.88
6.87
6.86
6.86
6.37
6.34

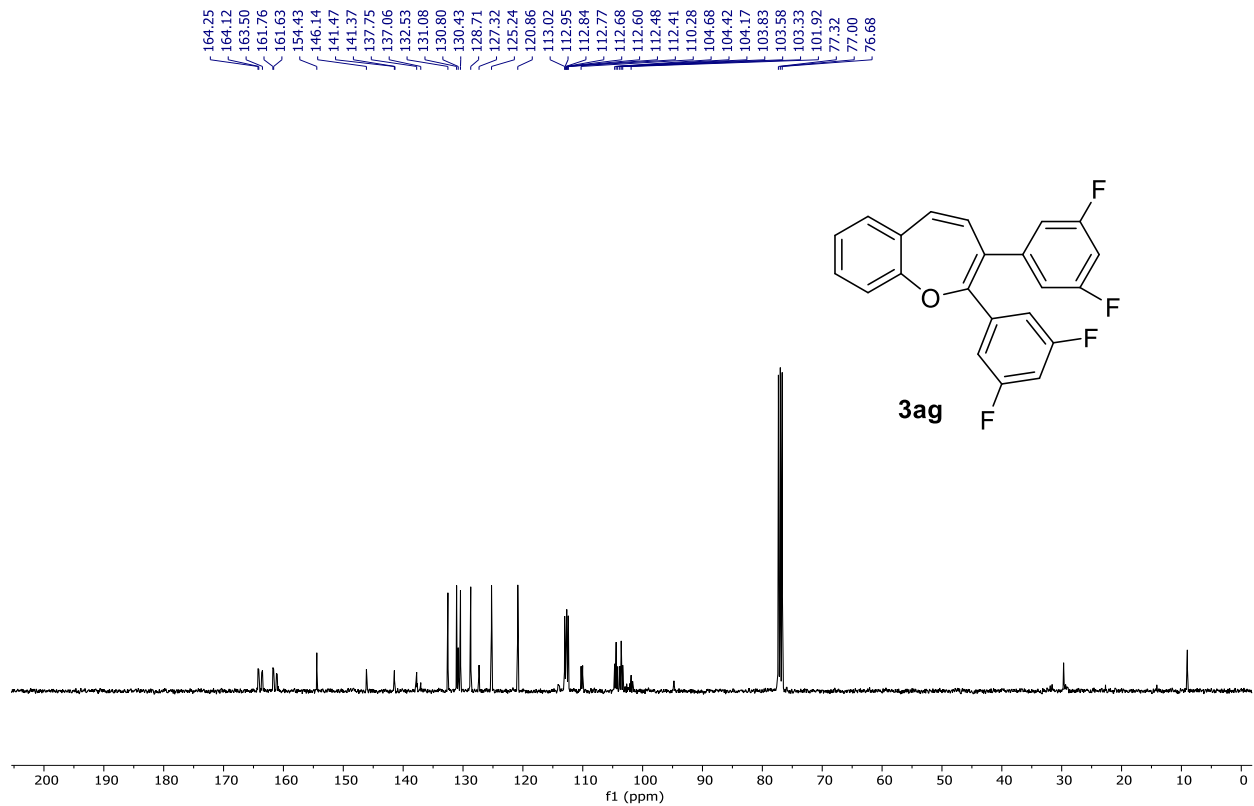
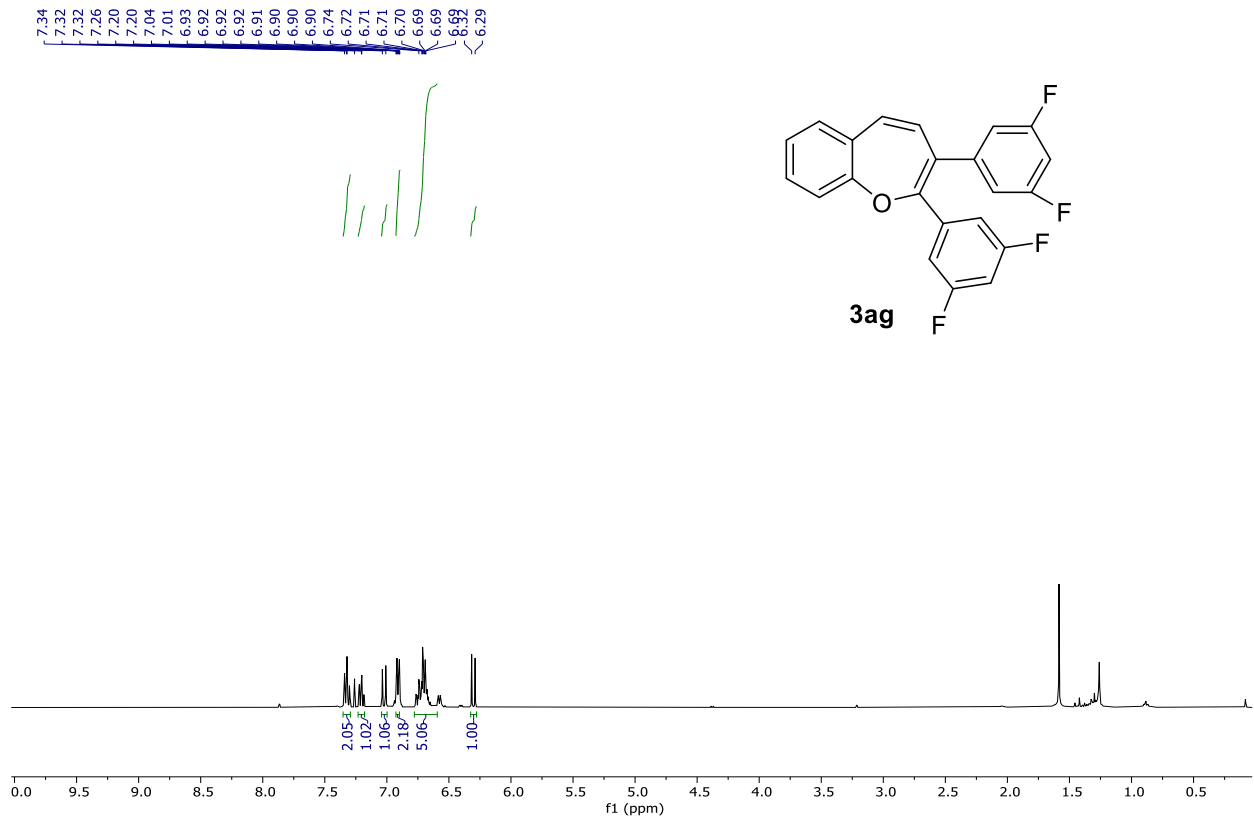


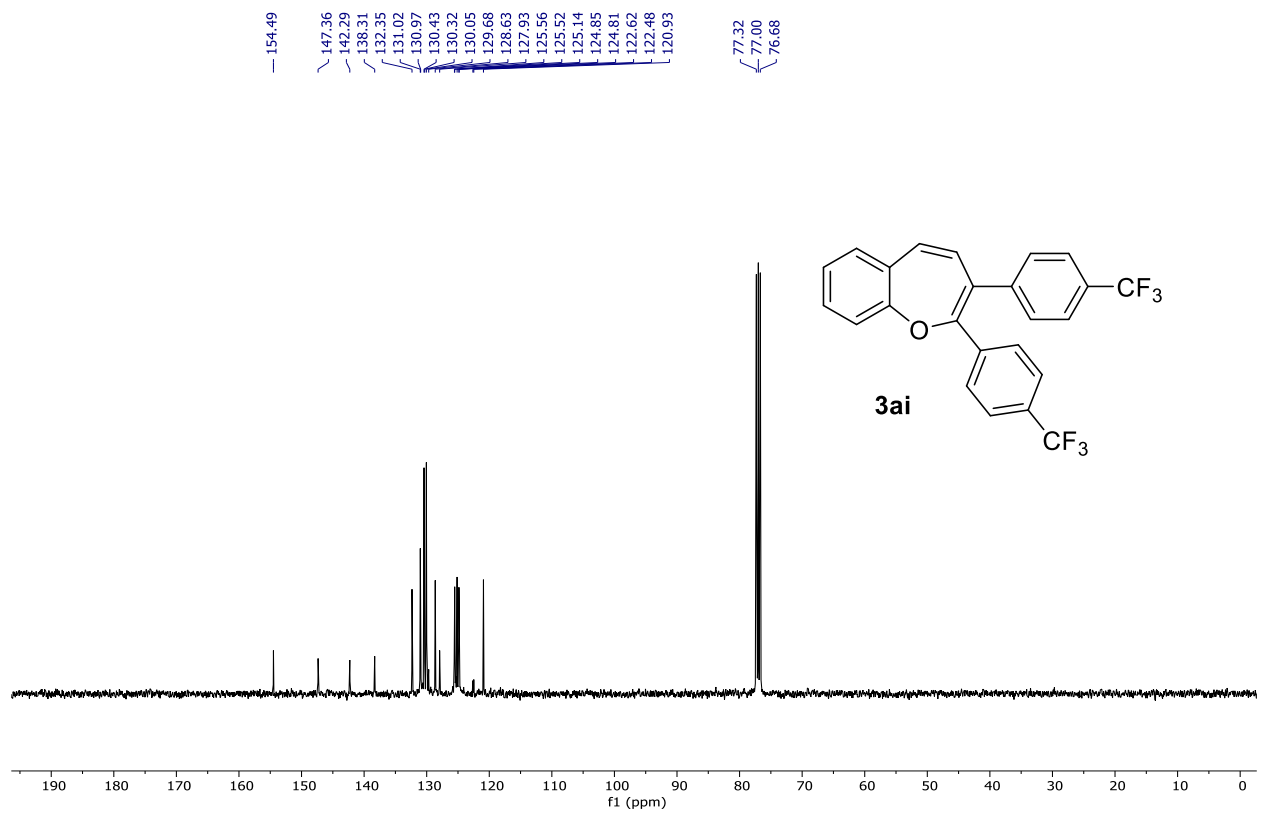
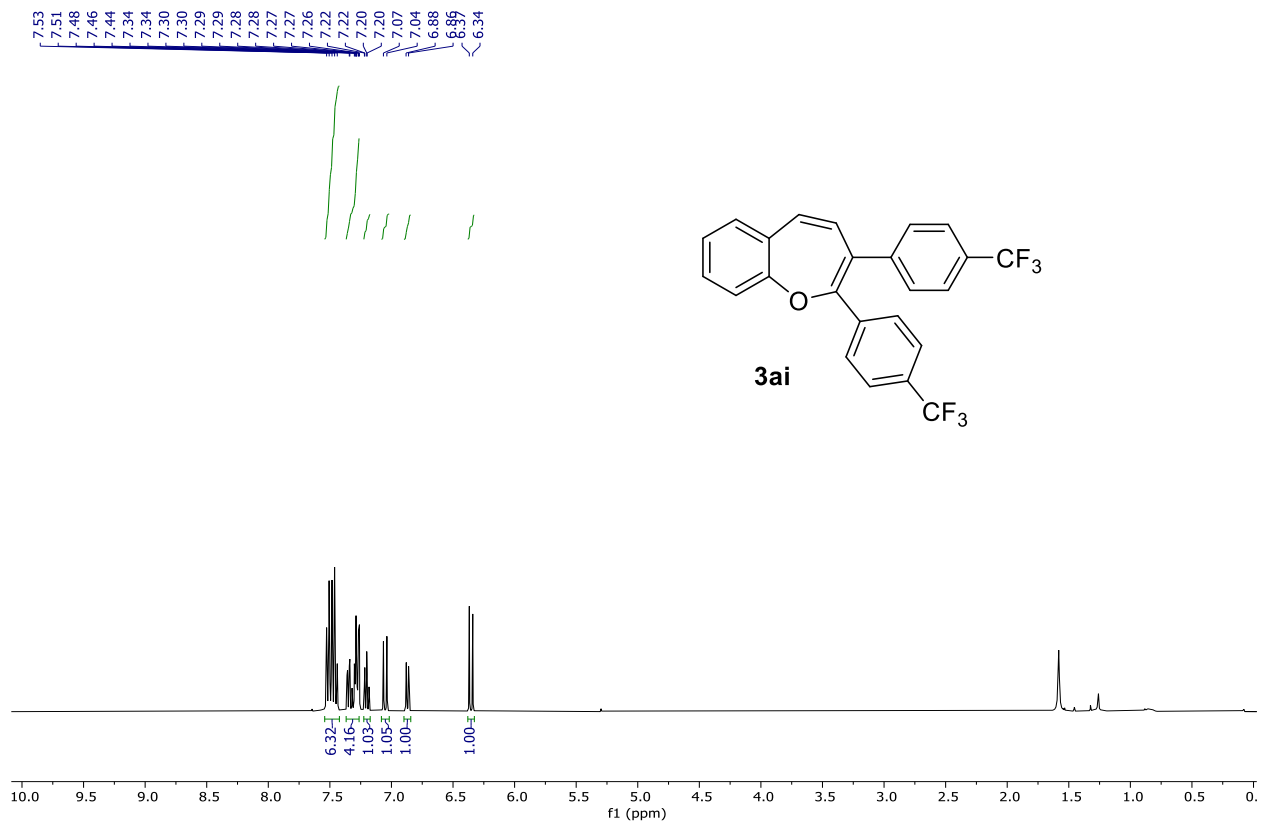
163.92
163.37
161.47
160.93
154.55
147.11
140.94
140.86
137.23
137.15
131.61
131.34
131.11
130.73
130.01
129.93
129.16
129.08
128.51
127.24
125.84
125.81
125.66
125.64
124.95
123.38
120.97
116.99
116.77
116.33
115.59
115.38
114.71
114.50
77.32
77.00
76.68

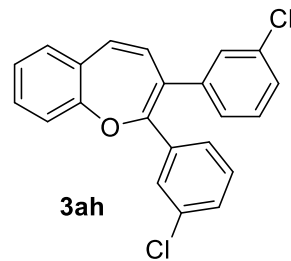
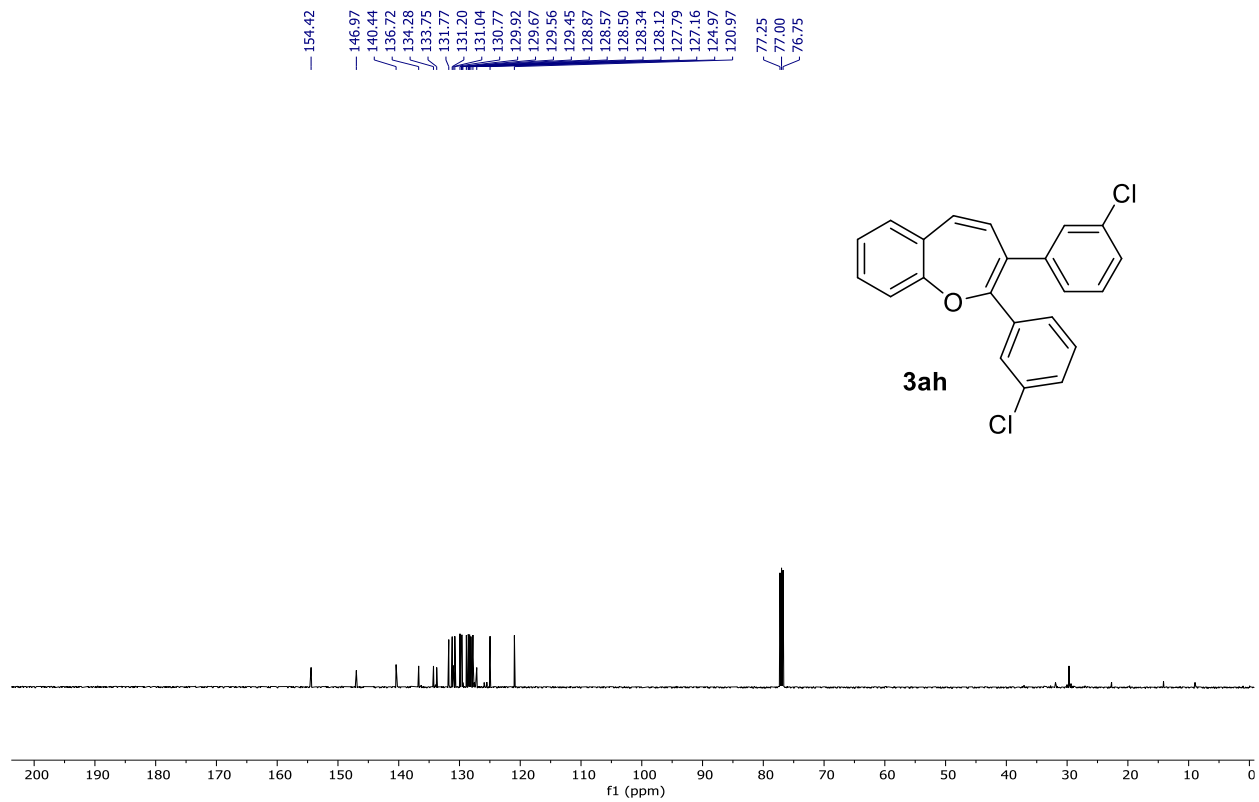
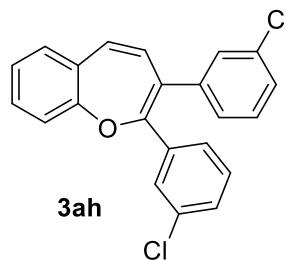
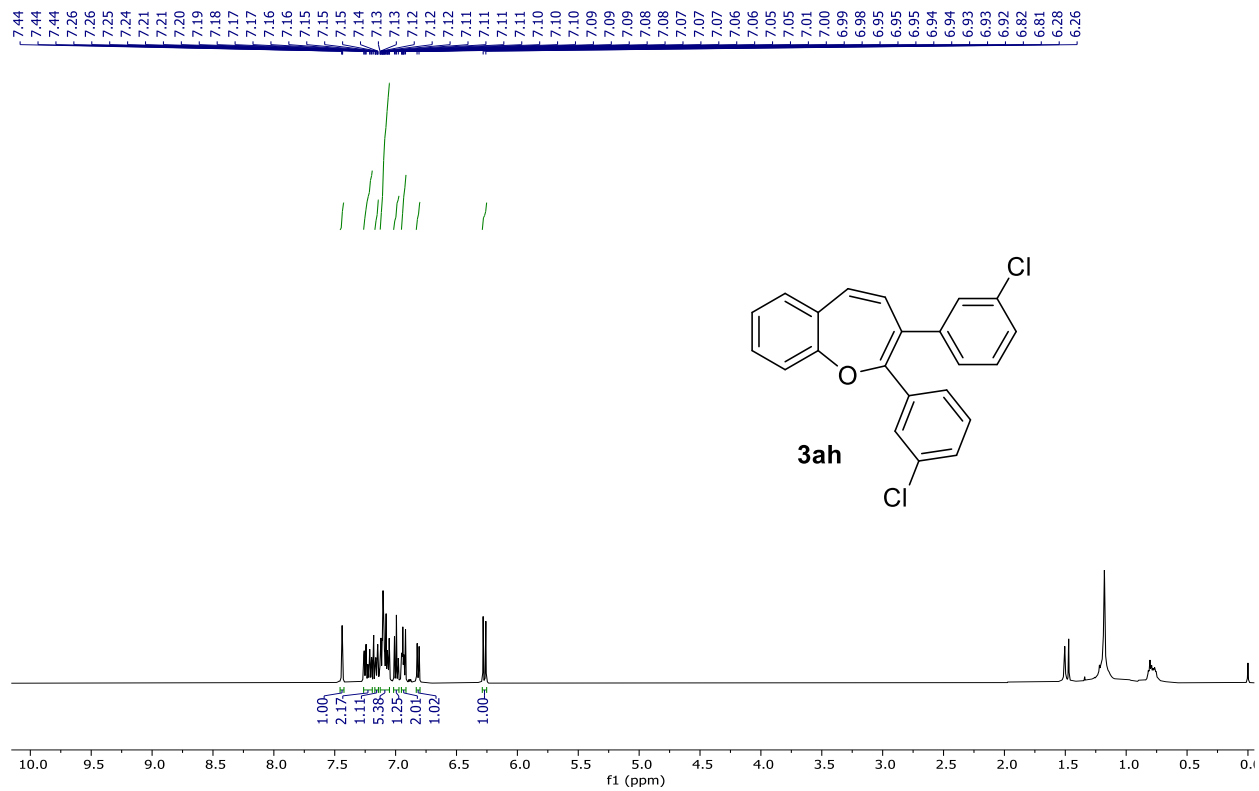


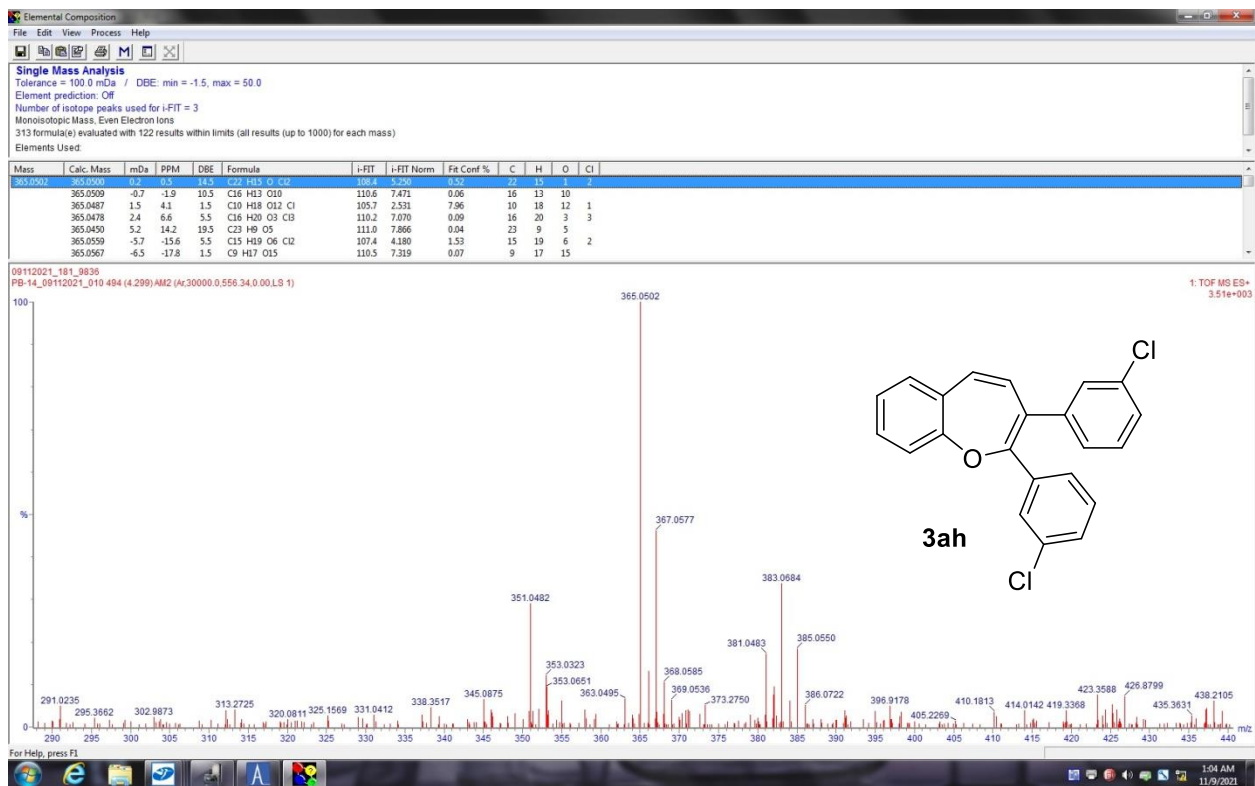


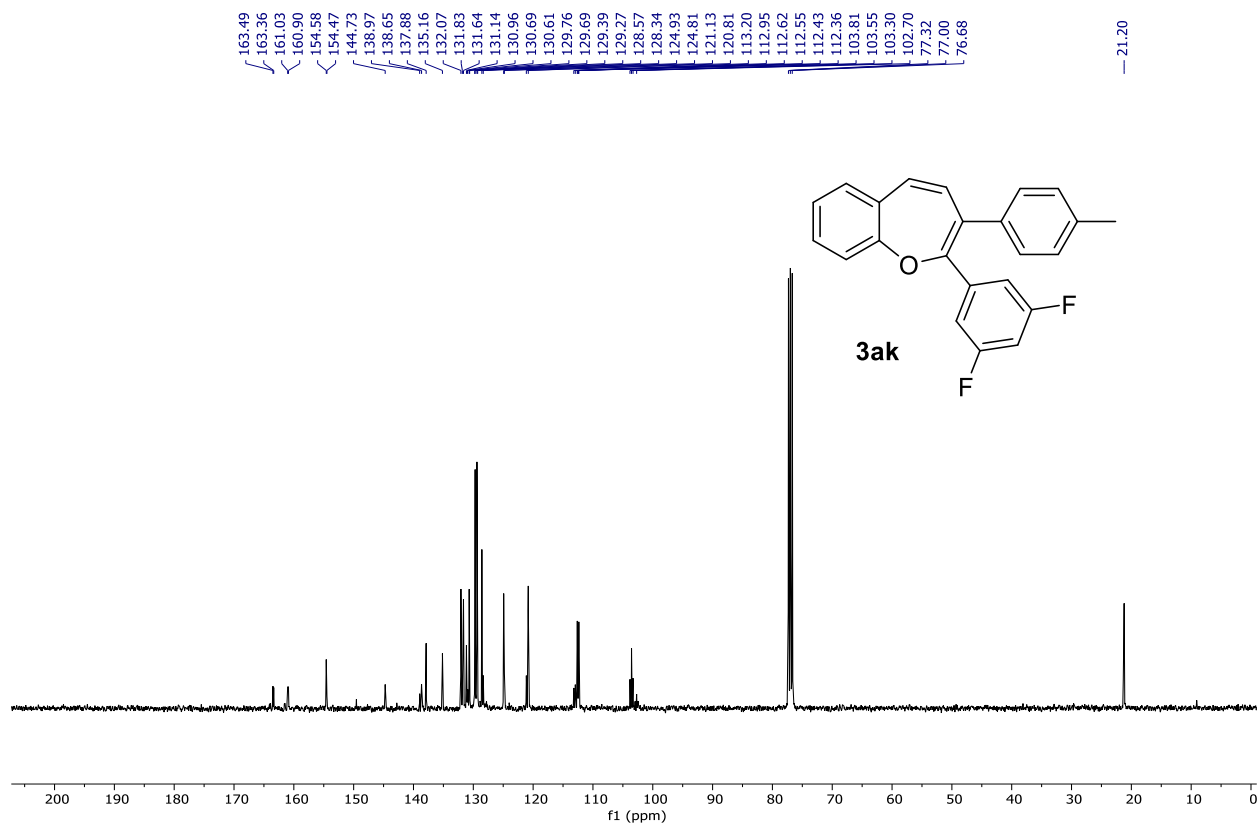
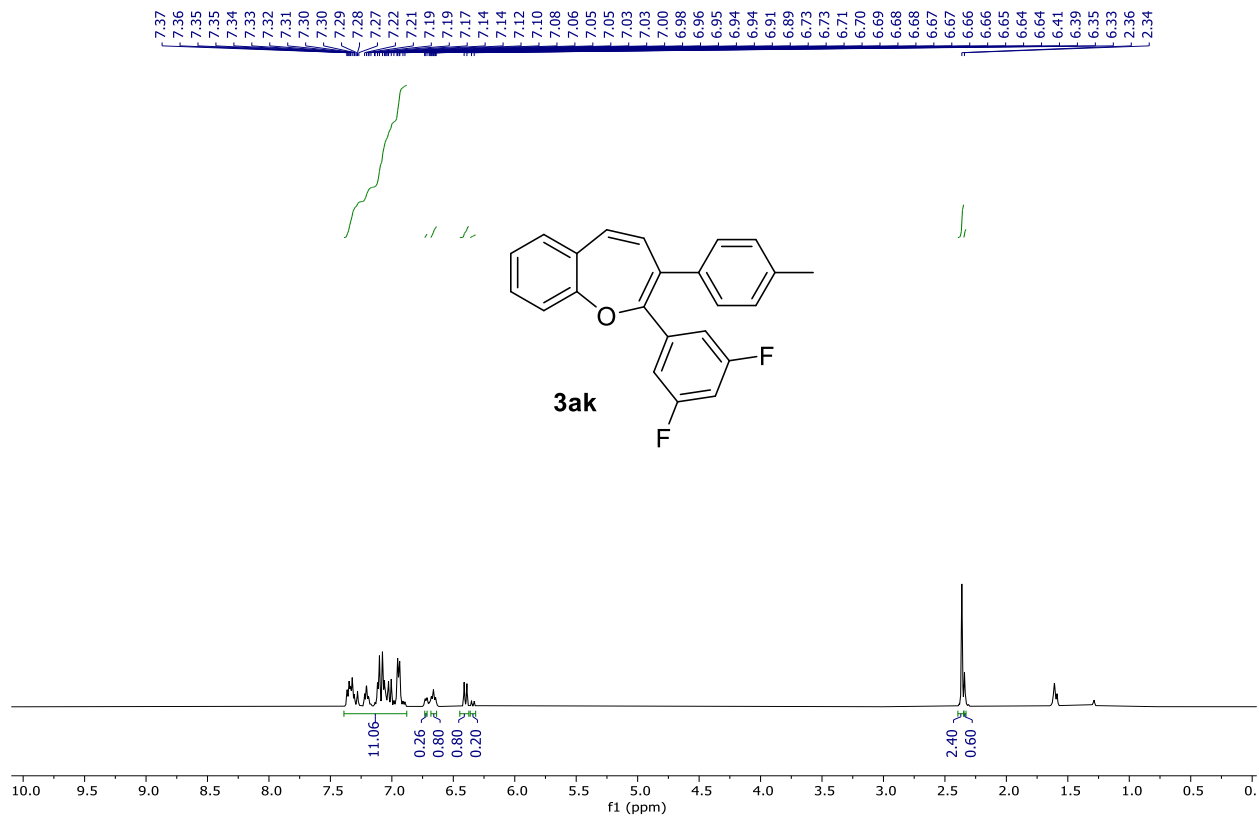


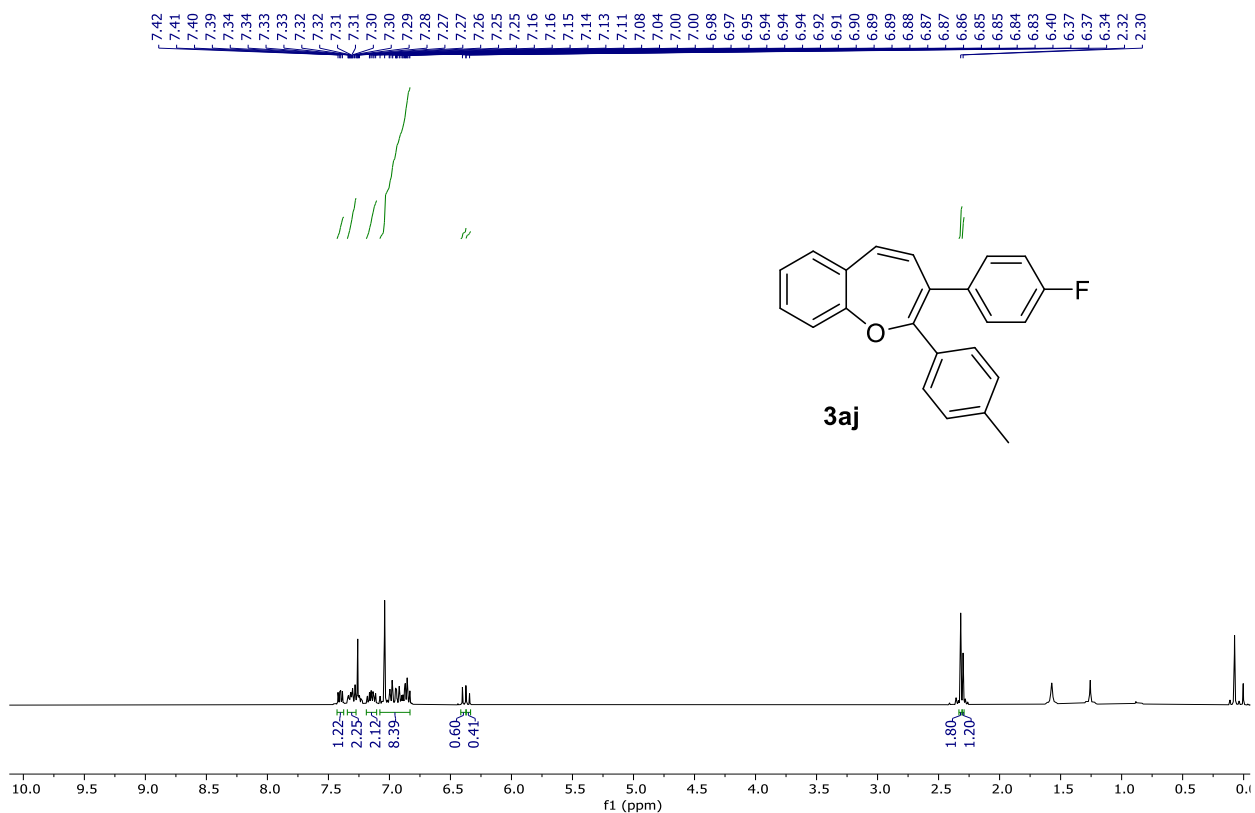
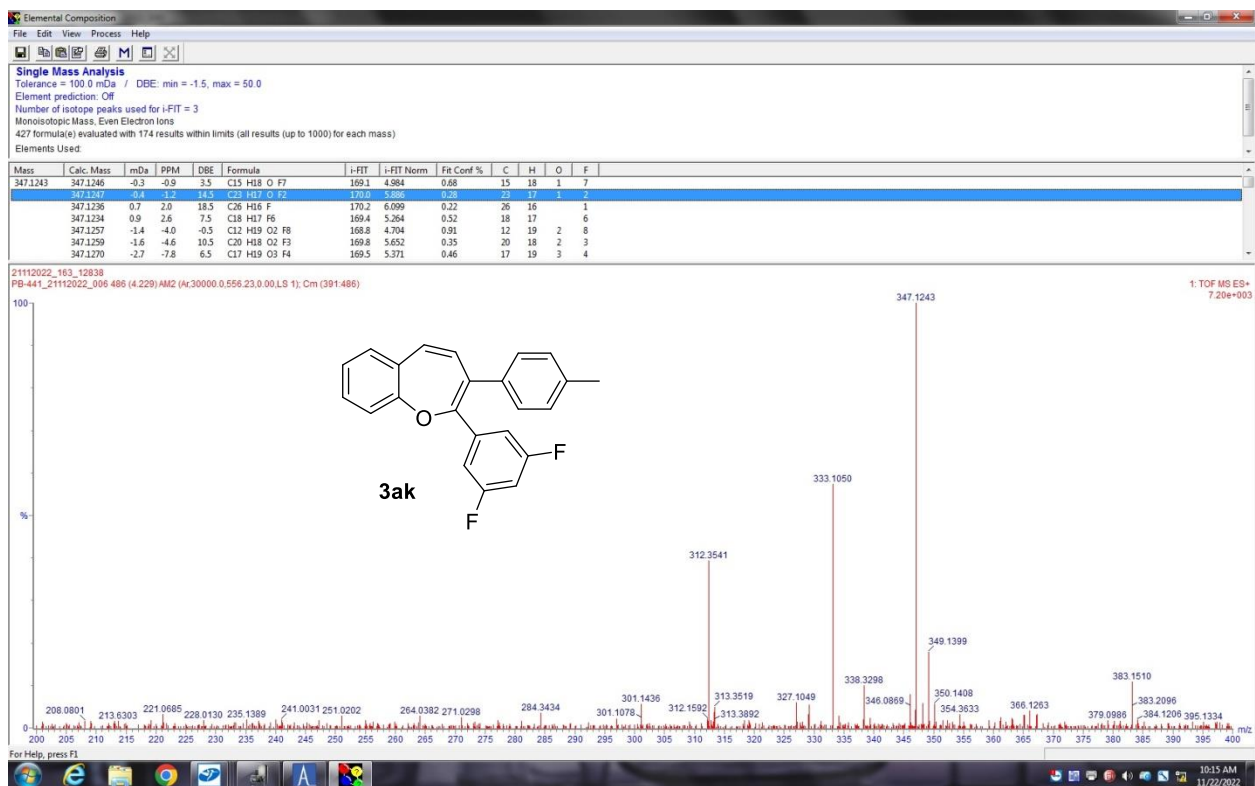


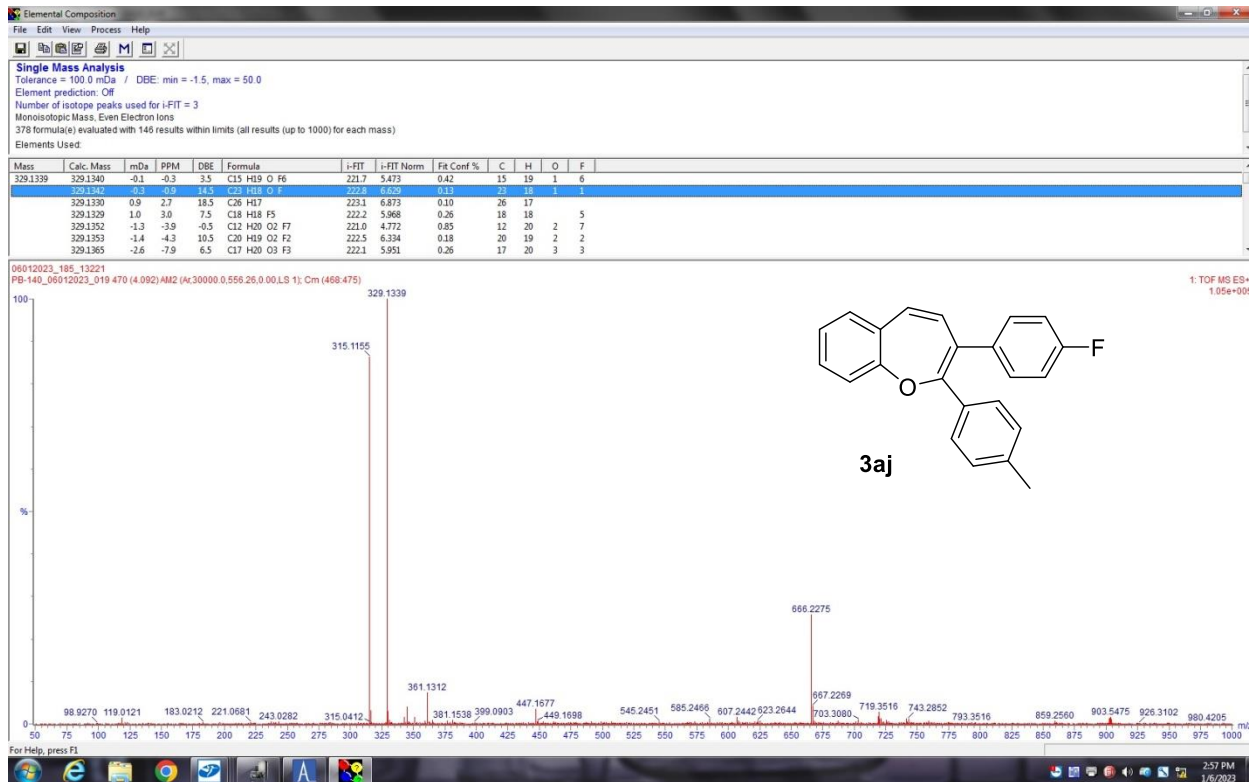
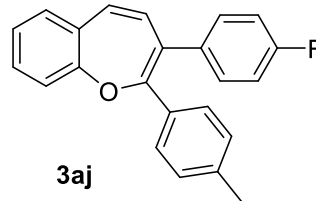
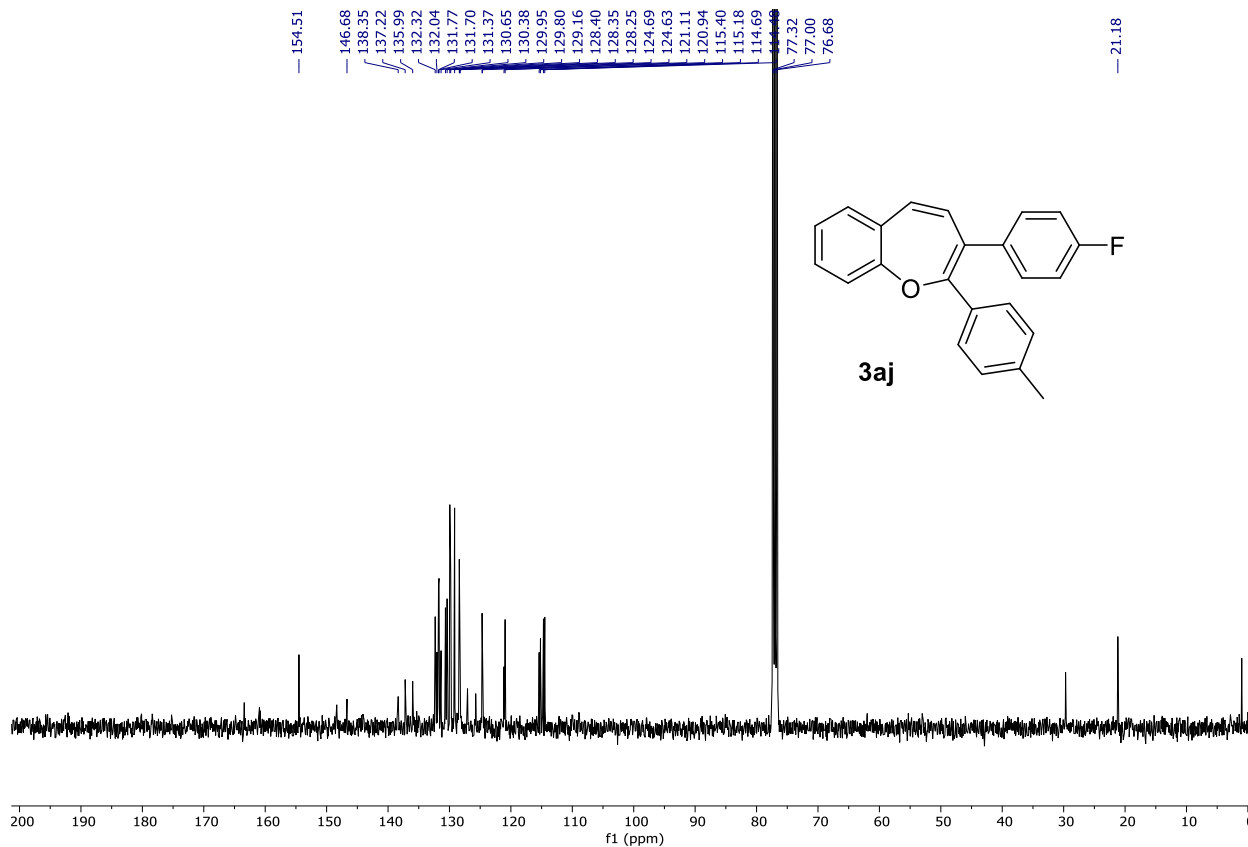


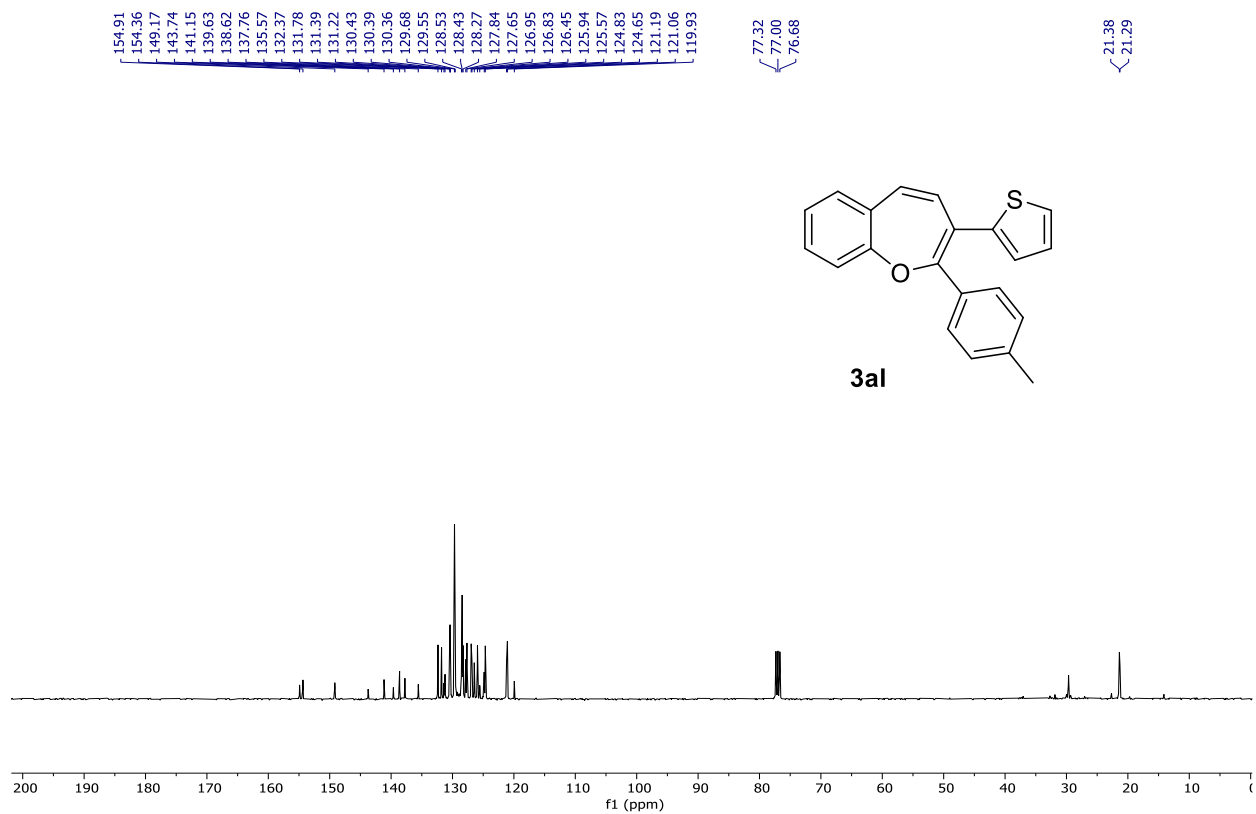
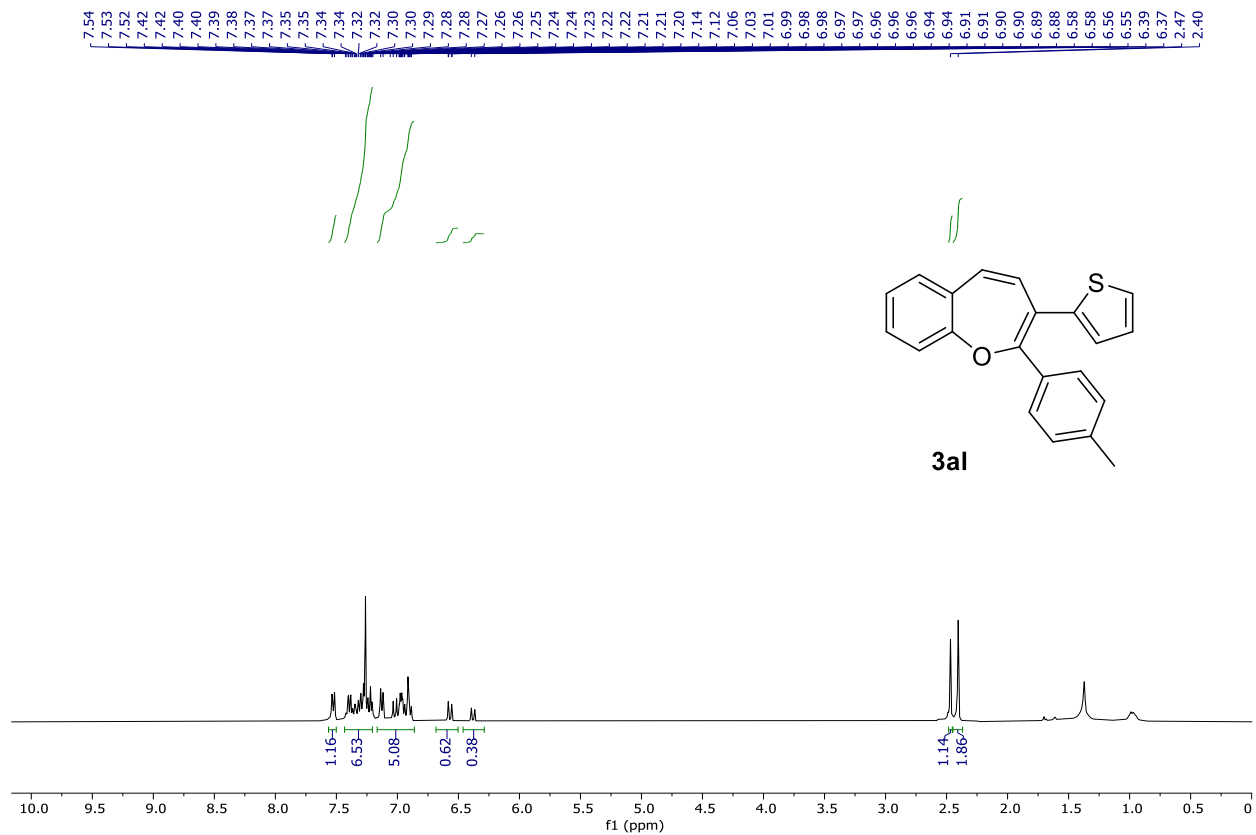


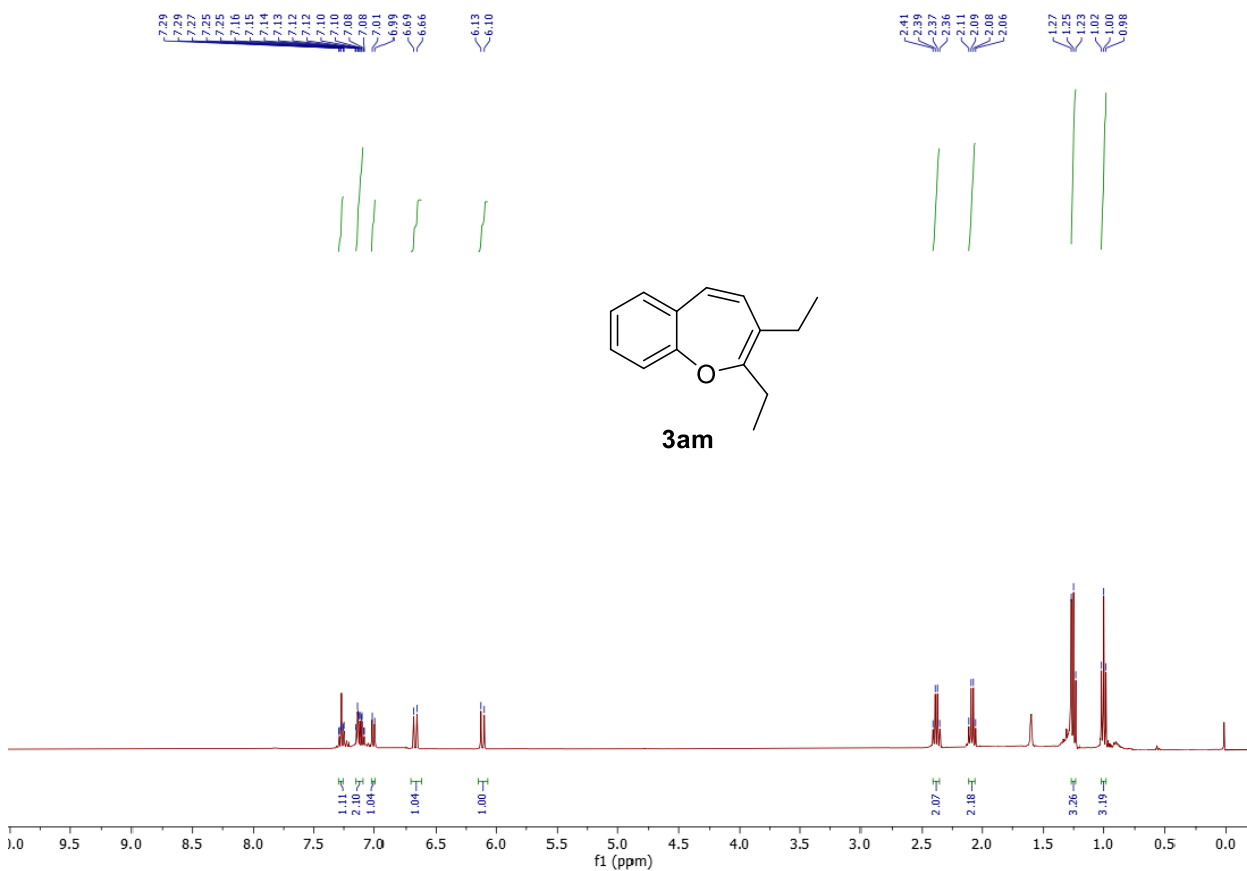
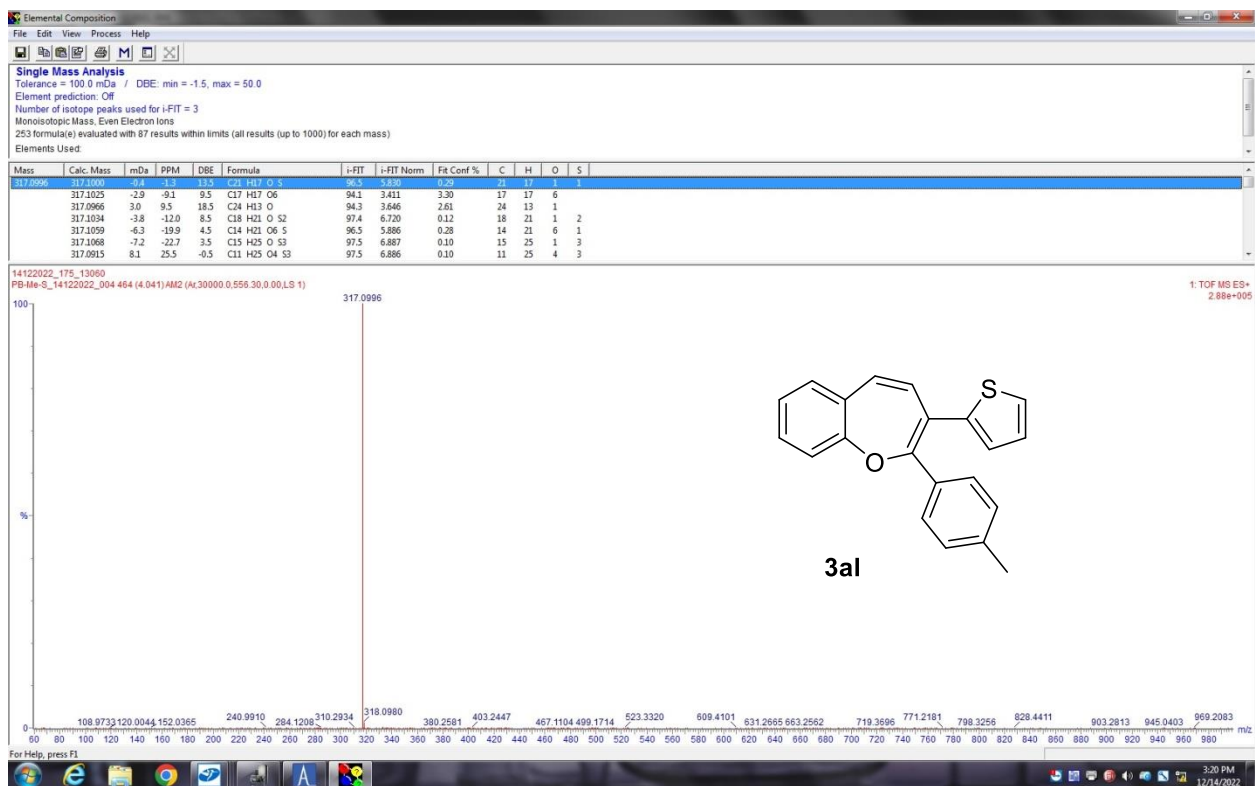


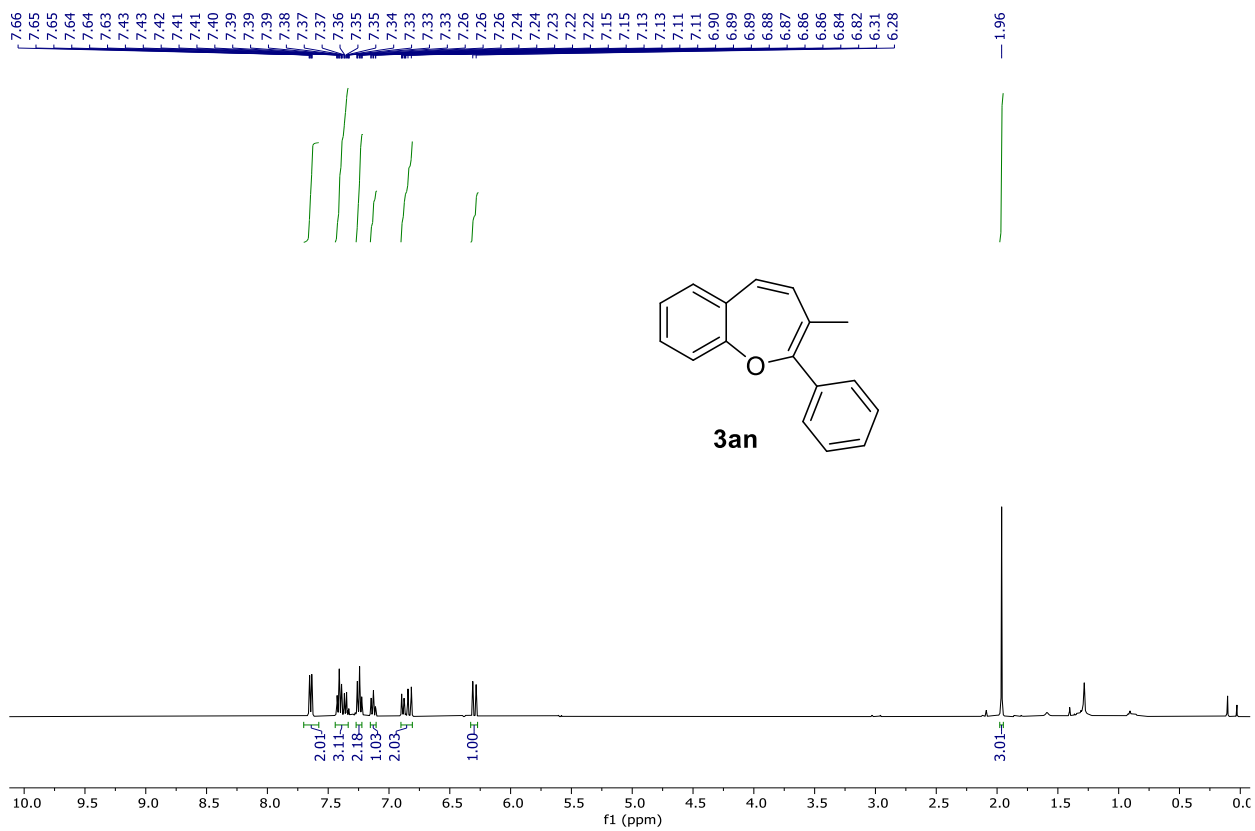
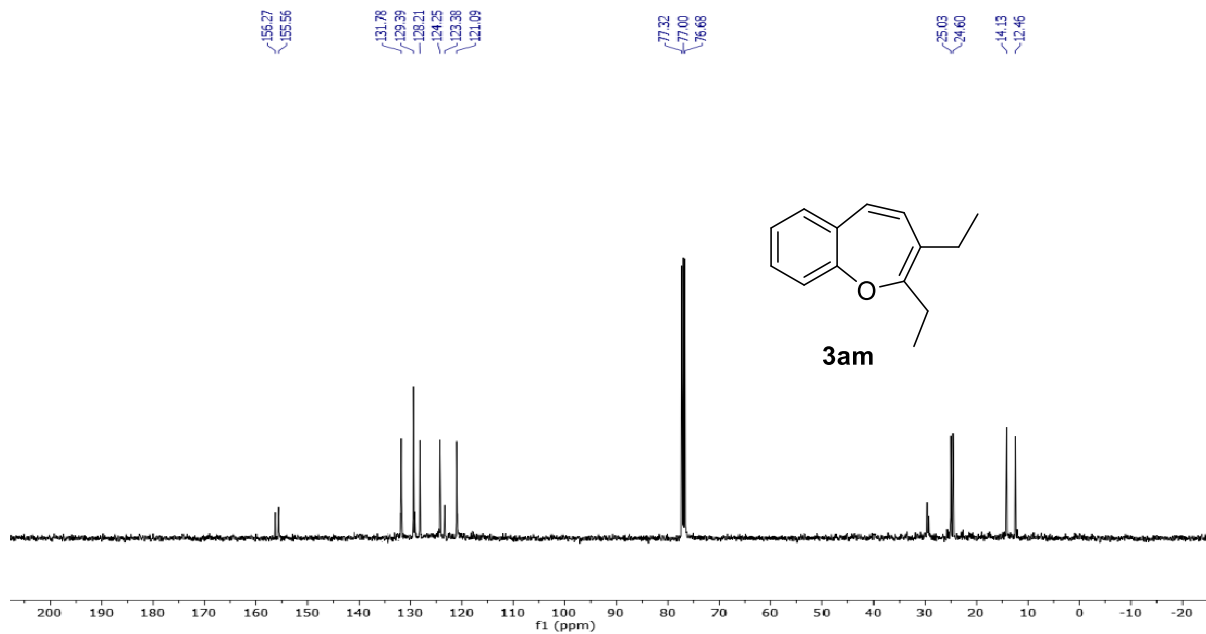


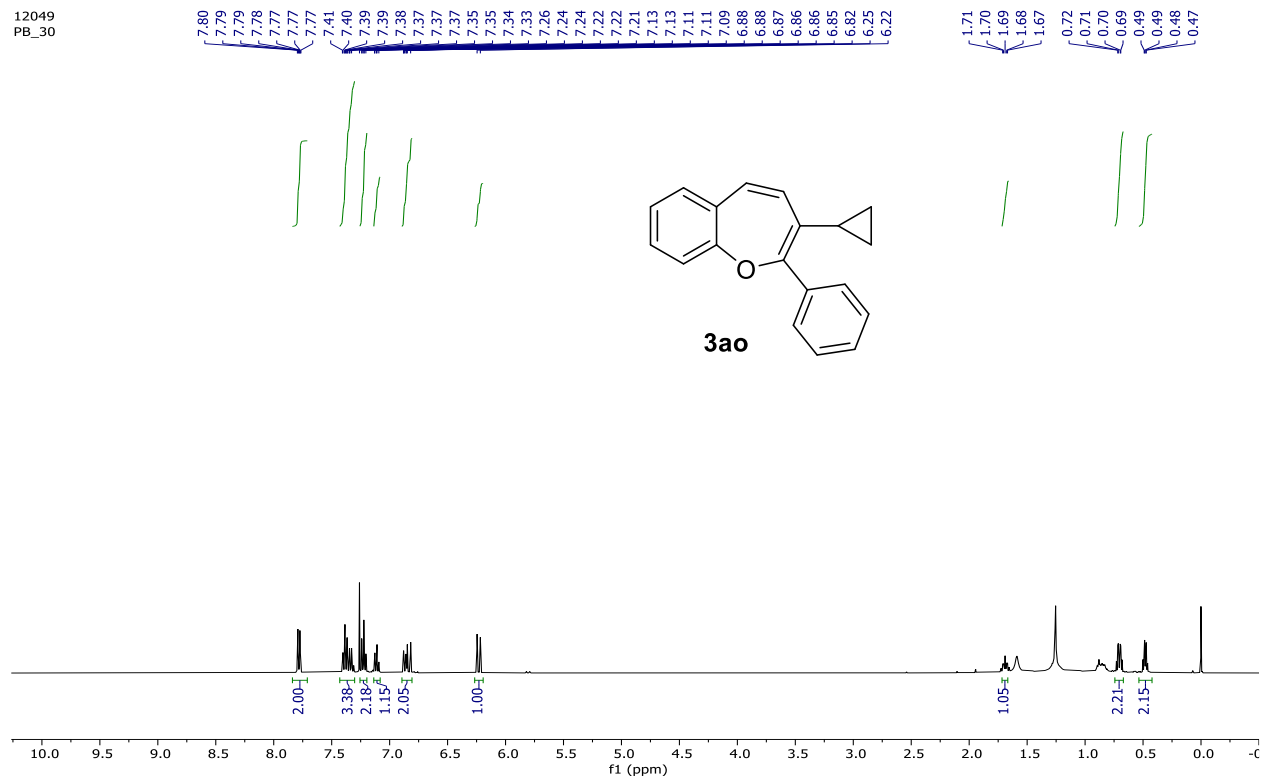
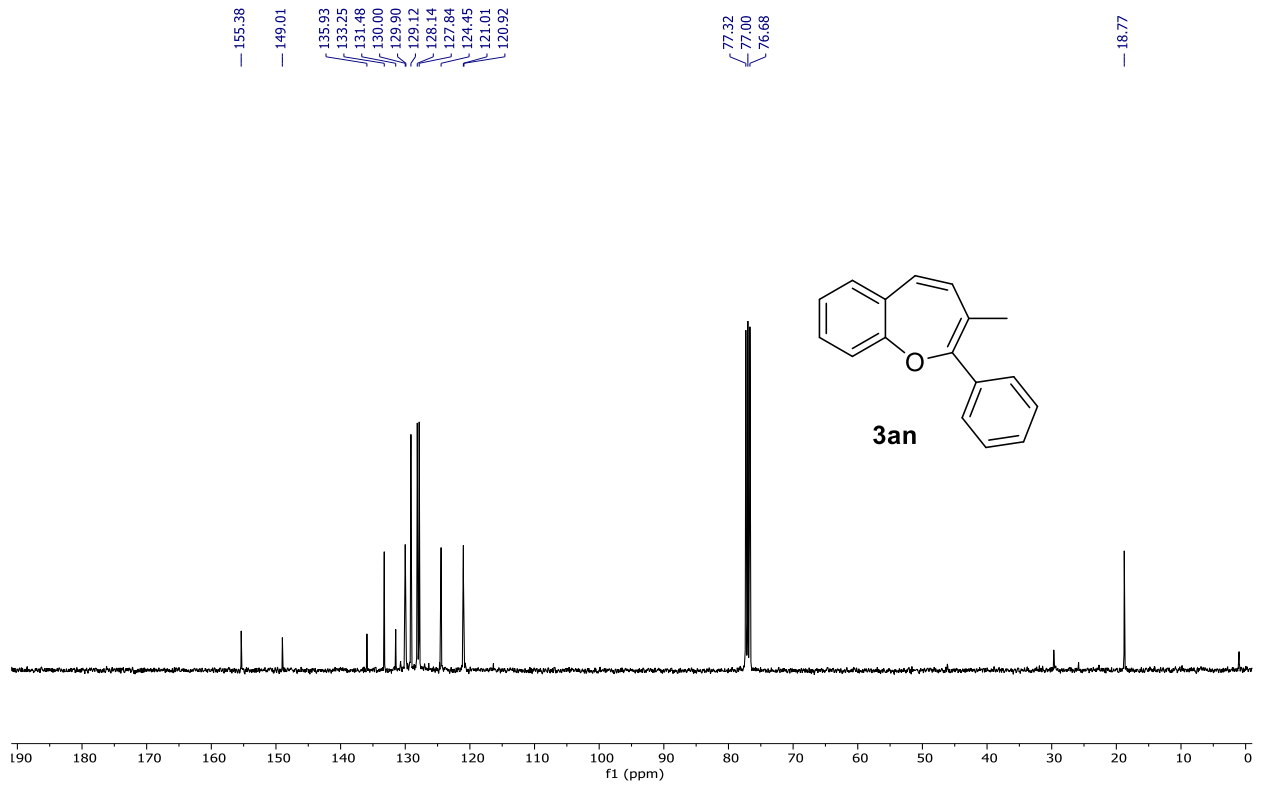




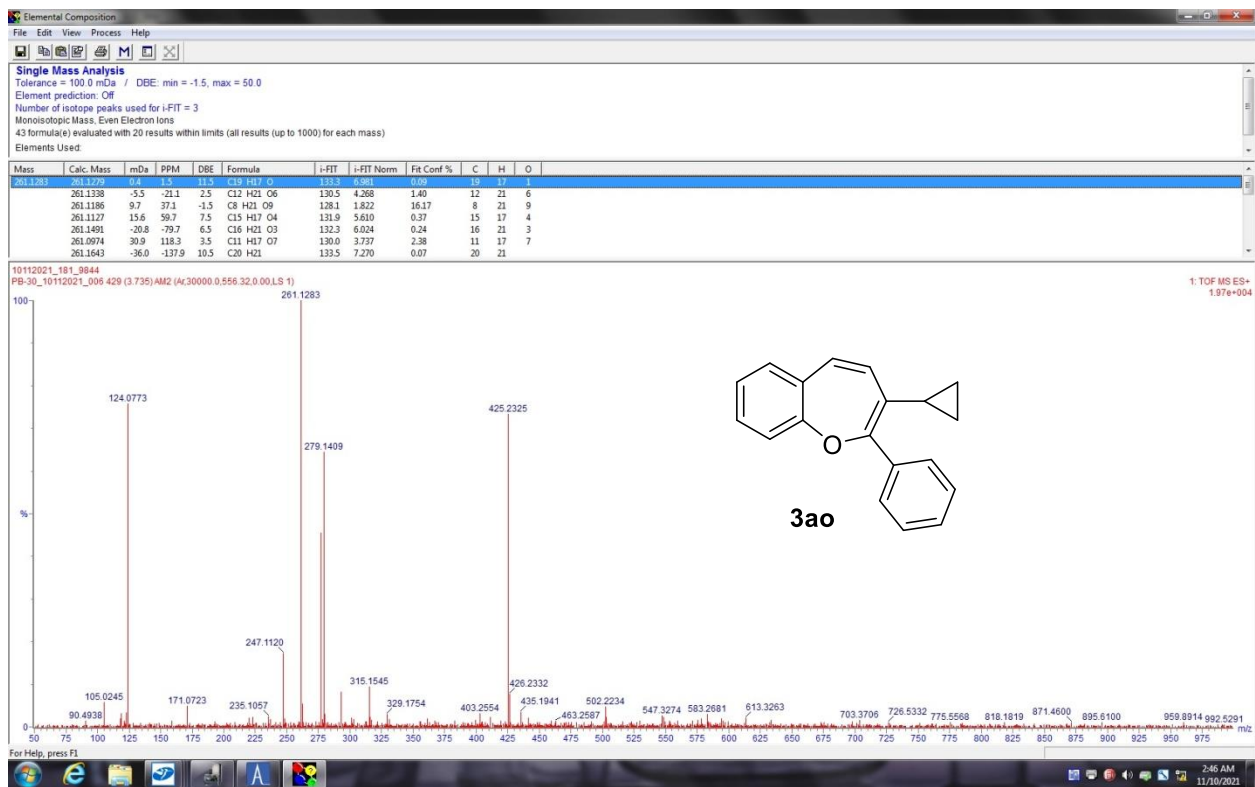
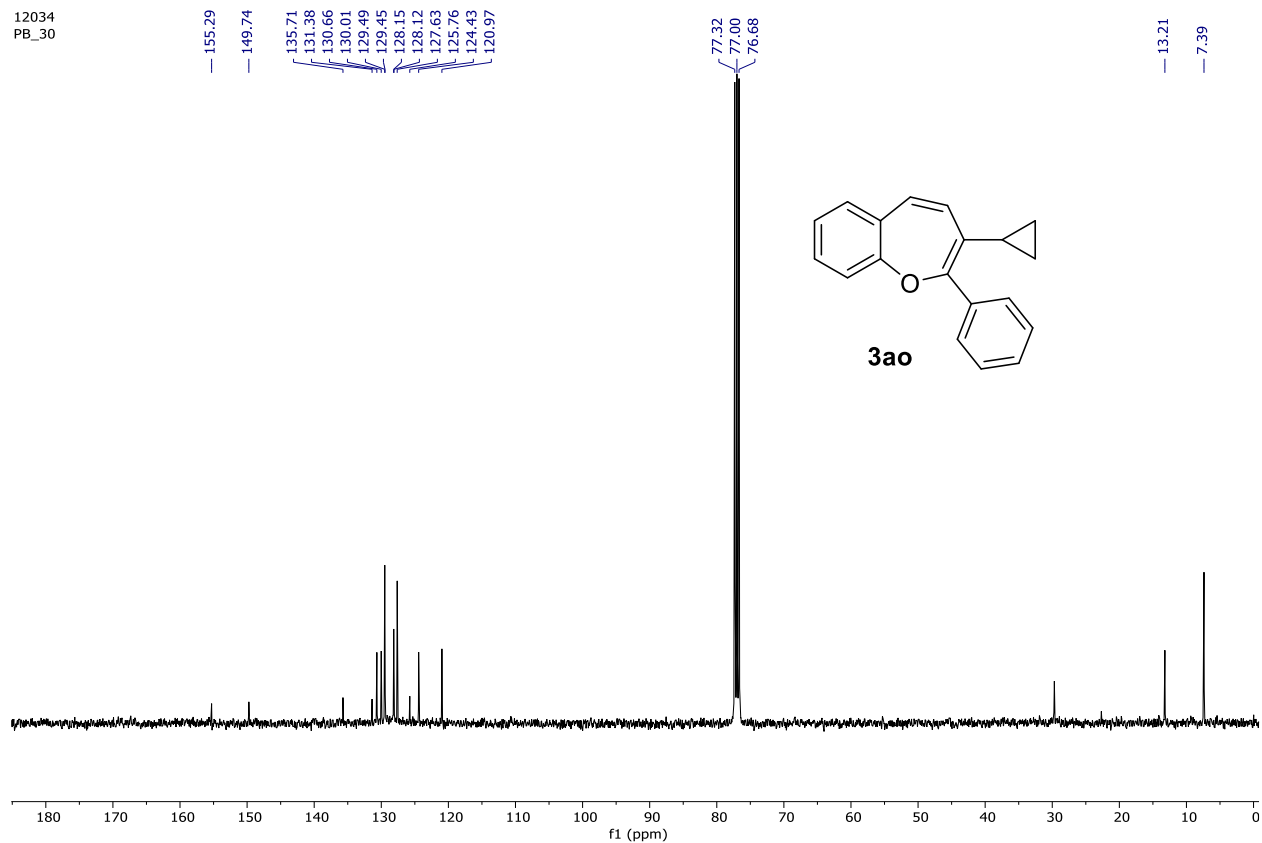


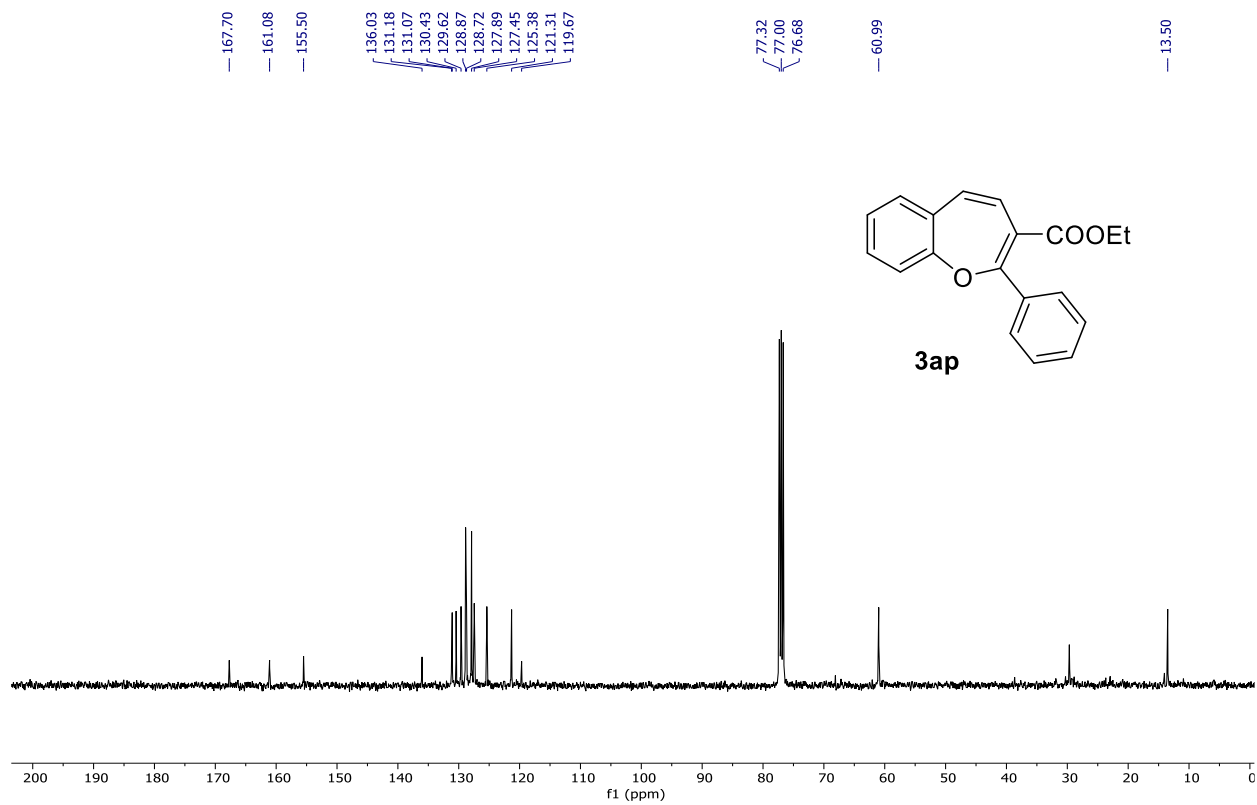
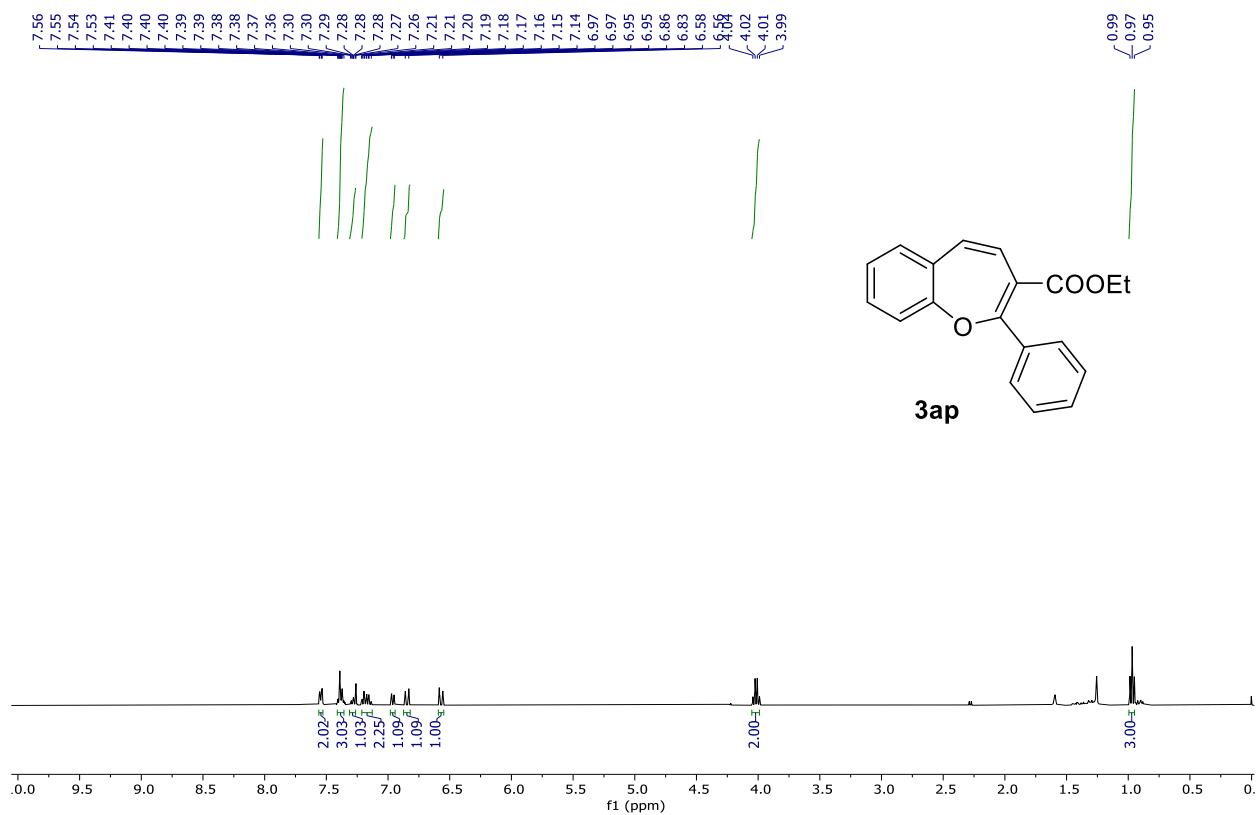


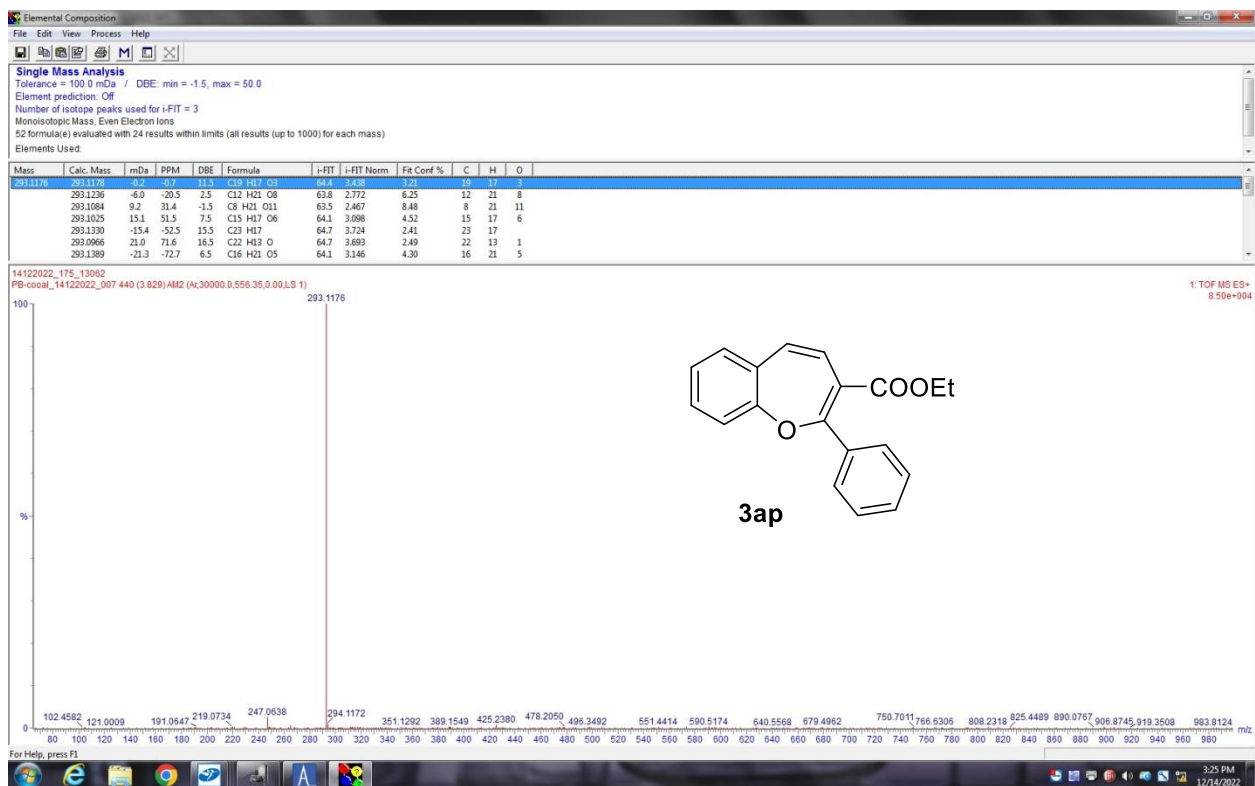




12034
PB_30







41451.1.fid
41451
TG-R-1

