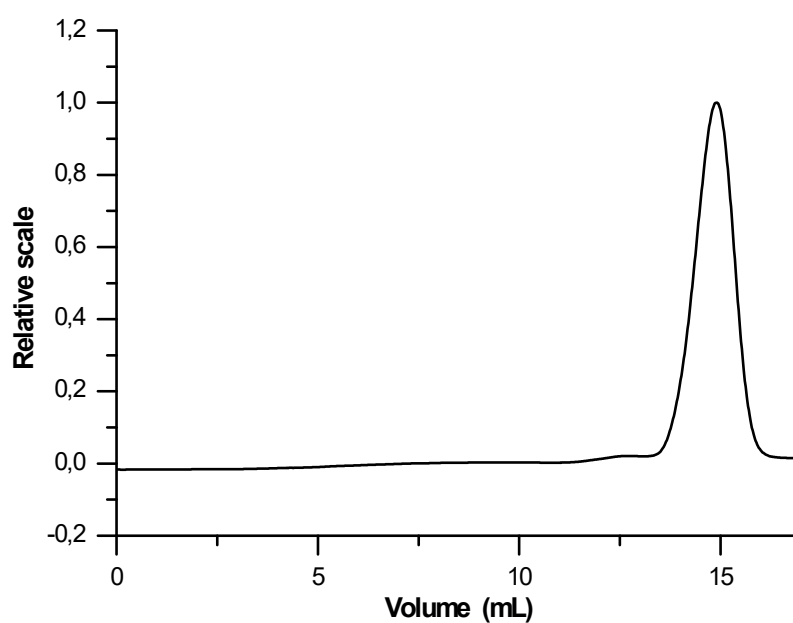
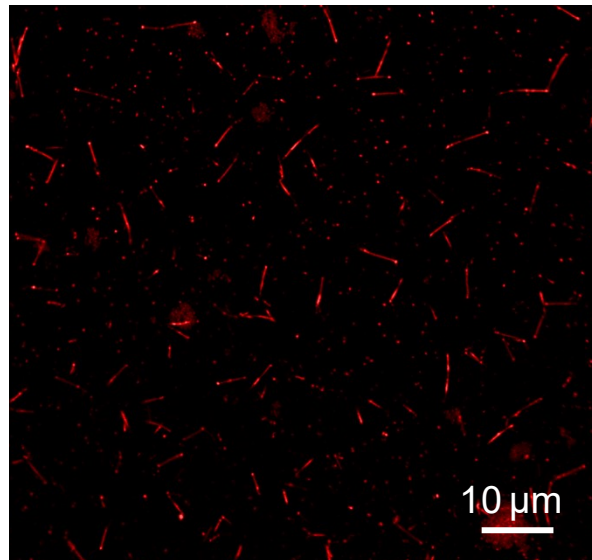


### Supplementary Information



**Figure S1:** Elution profiles from the refractive index of dextran sulfate. *Average molar masses and molar masses distributions were determined by size exclusion chromatography (SEC) coupled online with differential refractive index (DRI) detectors (results obtained via PEG calibration). The DRI detector is a RI, Optilab-TREX, WYATT TECHNOLOGY. Columns (PLaquagel-OH 40+30) were eluted with 0.1 mol.L<sup>-1</sup> LiNO<sub>3</sub>, respectively at 1 mL min<sup>-1</sup>. Eluent was filtered through a 0.1 μm filter unit (Millipore, USA).*



**Figure S2:** Acridine orange assay