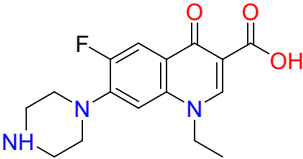
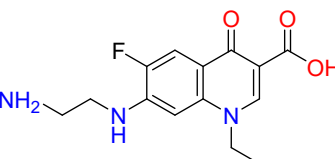
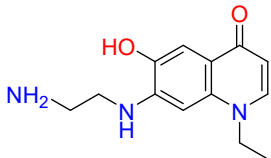
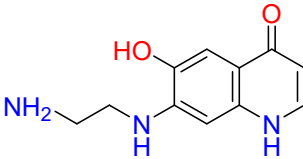
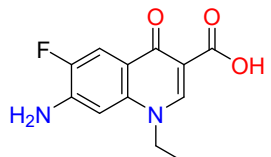
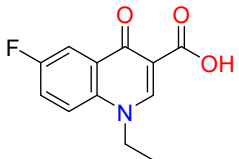
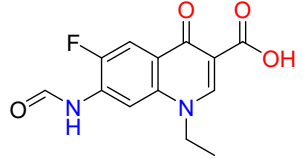
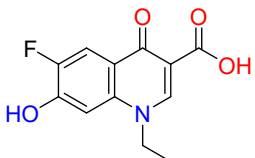


Table S1: NOR degradation intermediates in EC process

Products	<i>m/z</i>	Structural Formula
NOR	320	
M1	294	
M2	248	
M3	220	
M4	251	
M5	236	
M6	279	
M7	252	

M8

268

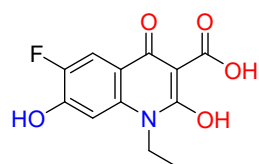
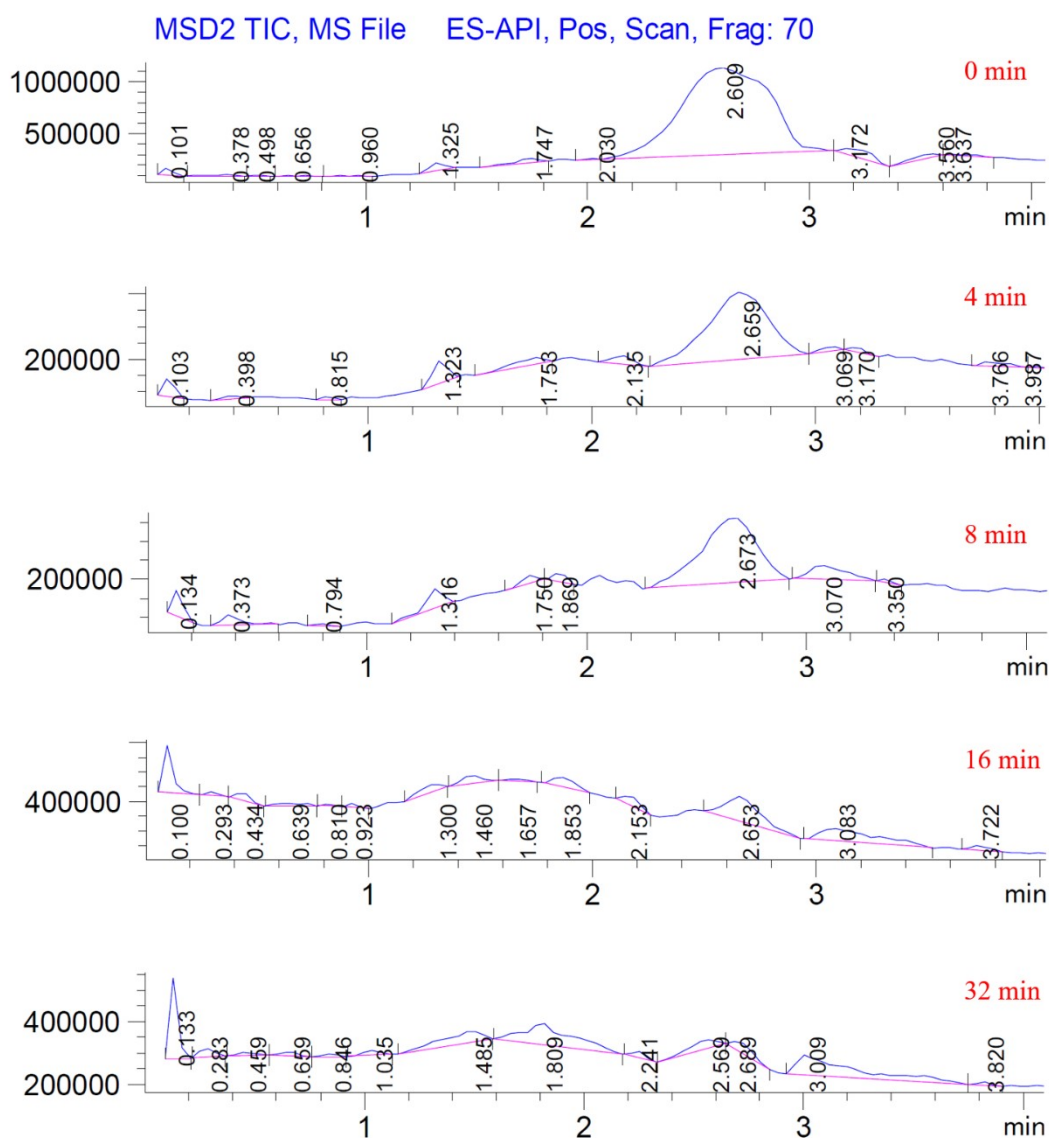


Fig. S1. Intermediate peaks during NOR removal



* The chromatographic column is X Bridge C18 (50 mm×4.6 mm×5 μm), the flow phase is methanol (95%) and pure water (5%), the flow rate is 0.4 mL min⁻¹, the injection volume is 20 μL, the ion source is ESI.