

Supporting Information

One-step fabrication of three-dimensional macropore copolymer-modified polycarbonate array by photo-crosslinking for protein immunoassay

Kaimei Peng,^{a,b} Runping Wang,^a Jianhua, Zhou^{b,*}

^a School of Chemistry and Chemical Engineering, Qiannan Normal University for Nationalities, Duyun 558000, China

^b Key Laboratory of Sensing Technology and Biomedical Instruments of Guangdong Province School of Biomedical Engineering, Sun Yat-sen University, Guangzhou 510275, China

CONTENTS

Figure S1 The calibration curve for evaluation of immobilization density of FITC-IgG.

Figure S2 ¹H-NMR spectra of PSMBDA₁₀₋₄₀, PSMDA, and PSMBD.

Figure S3 UV/vis absorption spectra of copolymer aqueous solution (0.38 mg/mL) at different UV illumination times (365 nm, 80 mW/cm²).

Figure S4 SEM images of the modified PC film prepared with (A) PSMBD, (B) PSMBDA₁₀, (C) PSMBDA₂₀, (D) PSMBDA₃₀, (E) PSMBDA₄₀, and (F) PSMDA in 10 mM PBS. All polymers are at a concentration of 25 mg/mL.

Figure S5 SEM images of the modified (A) PE, (B) PET, (C) PMMA, (D) PS, (E) PVC, or (F) PP film prepared with 25 mg/mL PSMBDA₃₀ in 10 mM PBS.

Figure S6 The porosity (A) and pore size distribution (B–F) of copolymer PSMBD, PSMBDA₁₀, PSMBDA₂₀, PSMBDA₃₀ and PSMBDA₄₀, respectively.

Figure S7 (A) The film thickness of different copolymer (PSMBDA₃₀) concentrations, and SEM images of the modified PC film prepared with (B) 5 mg/mL, (C) 13 mg/mL, (D) 25 mg/mL, (E) 40 mg/mL, and (F) 50 mg/mL PSMBDA₃₀ in 10 mM PBS, respectively.

Figure S8 Water contact angle images of pristine PC (A), PSMBDA₁₀ (B), PSMBDA₂₀ (C), PSMBDA₃₀ (D), PSMBDA₄₀ (E), PSMDA (F), and PSMBD (G) modified PC film.

Figure S9 Fluorescence images of PSMBDA₃₀ PBS solution modified PC film (3D surface) and PSMBDA₃₀ aqueous solution modified PC film (2D surface) under different FITC-IgG concentrations.

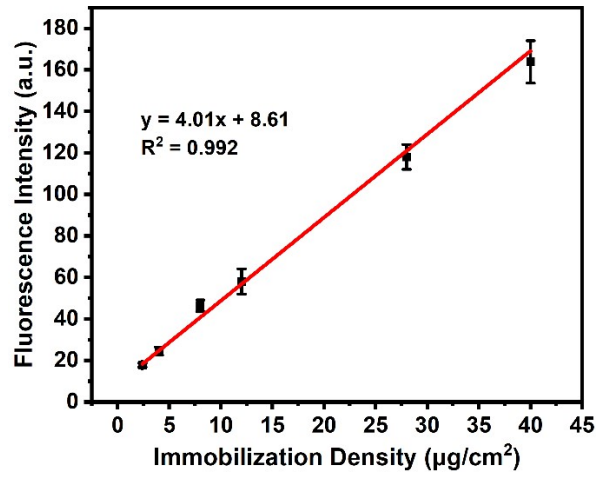


Figure S1 The calibration curve for evaluation of immobilization density of FITC-IgG.

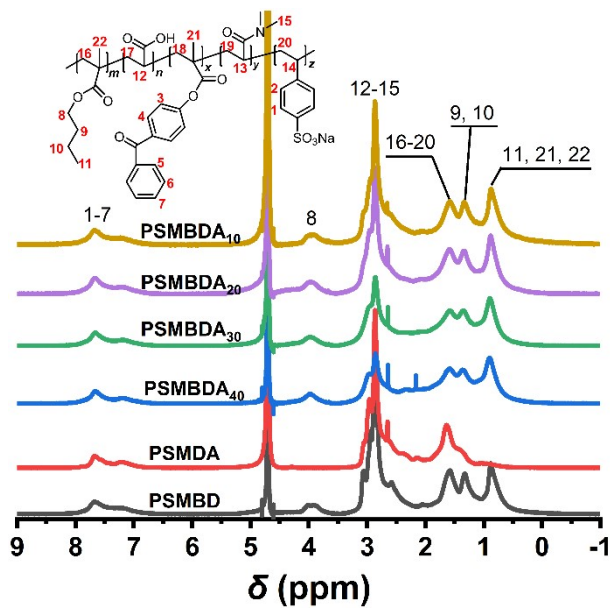


Figure S2 ¹H-NMR spectra of PSMBDA₁₀₋₄₀, PSMDA, and PSMBD.

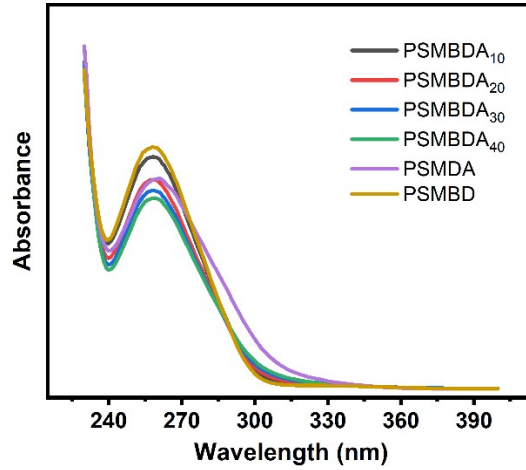


Figure S3 UV/vis absorption spectra of copolymer aqueous solution (0.38 mg/mL) at different UV illumination times (365 nm, 80 mW/cm²).

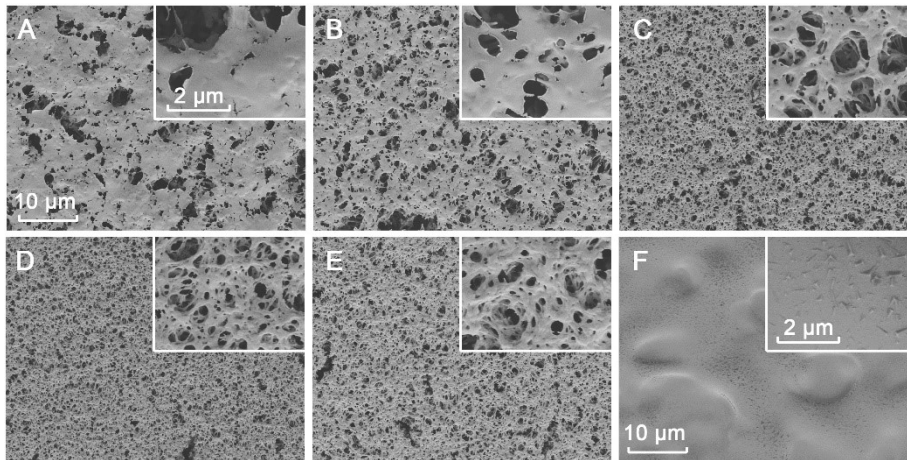


Figure S4 SEM images of the modified PC film prepared with (A) PSMBD, (B) PSMBDA₁₀, (C) PSMBDA₂₀, (D) PSMBDA₃₀, (E) PSMBDA₄₀, and (F) PSMDA in 10 mM PBS. All polymers are at a concentration of 25 mg/mL.

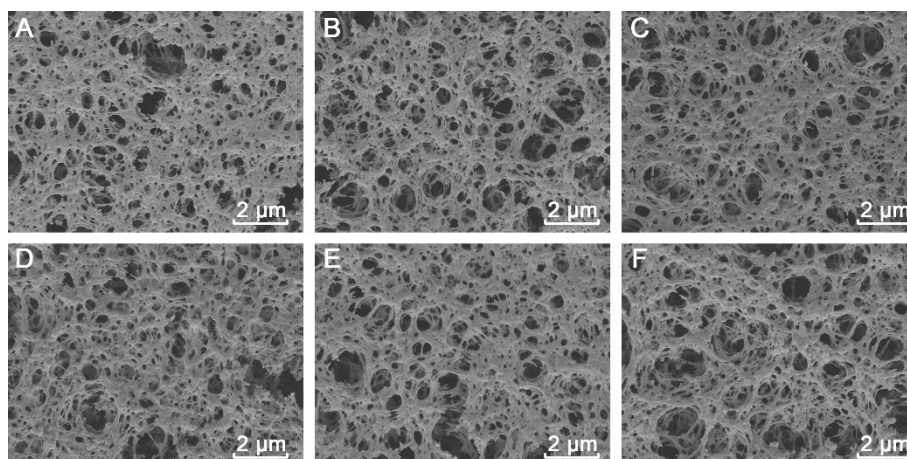


Figure S5 SEM images of the modified (A) PE, (B) PET, (C) PMMA, (D) PS, (E) PVC, or (F) PP film prepared with 25 mg/mL PSMBDA₃₀ in 10 mM PBS.

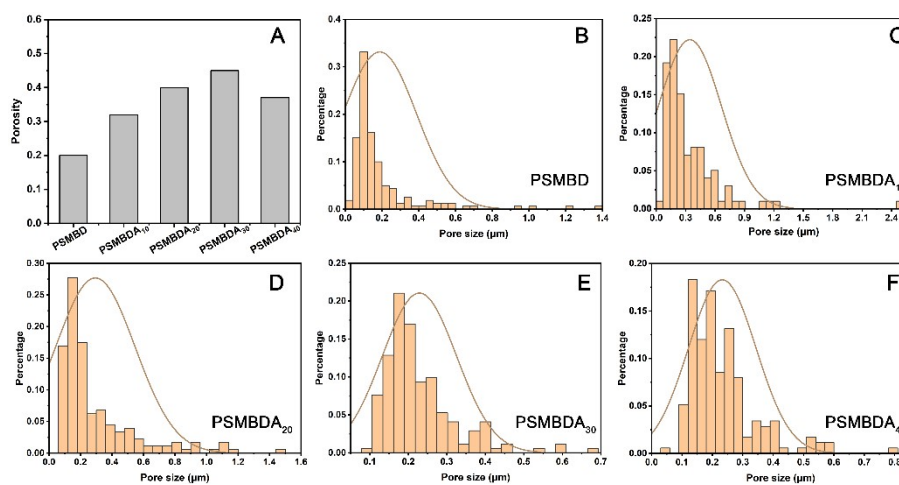


Figure S6 The porosity (A) and pore size distribution (B–F) of copolymer PSMBD, PSMBDA₁₀, PSMBDA₂₀, PSMBDA₃₀ and PSMBDA₄₀, respectively.

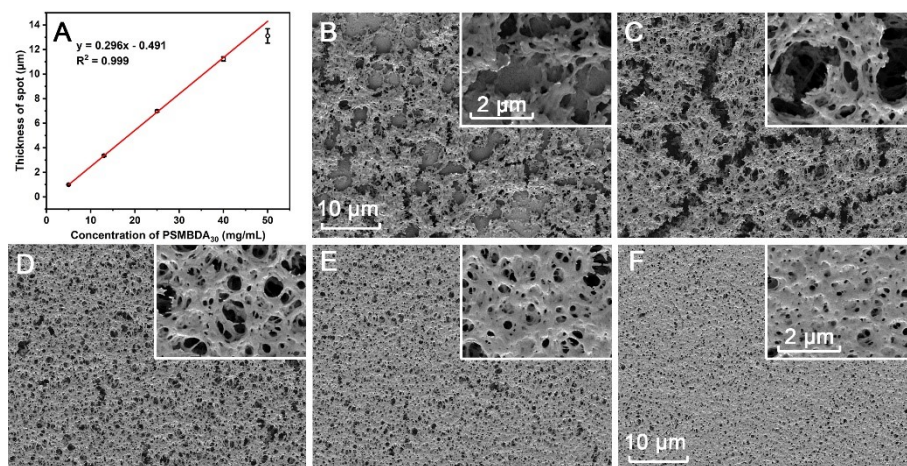


Figure S7 (A) The film thickness of different copolymer (PSMBDA₃₀) concentrations, and SEM images of the modified PC film prepared with (B) 5 mg/mL, (C) 13 mg/mL, (D) 25 mg/mL, (E) 40 mg/mL, and (F) 50 mg/mL PSMBDA₃₀ in 10 mM PBS, respectively.



Figure S8 Water contact angle images of pristine PC (A), PSMBDA₁₀ (B), PSMBDA₂₀ (C), PSMBDA₃₀ (D), PSMBDA₄₀ (E), PSMDA (F), and PSMBD (G) modified PC film.

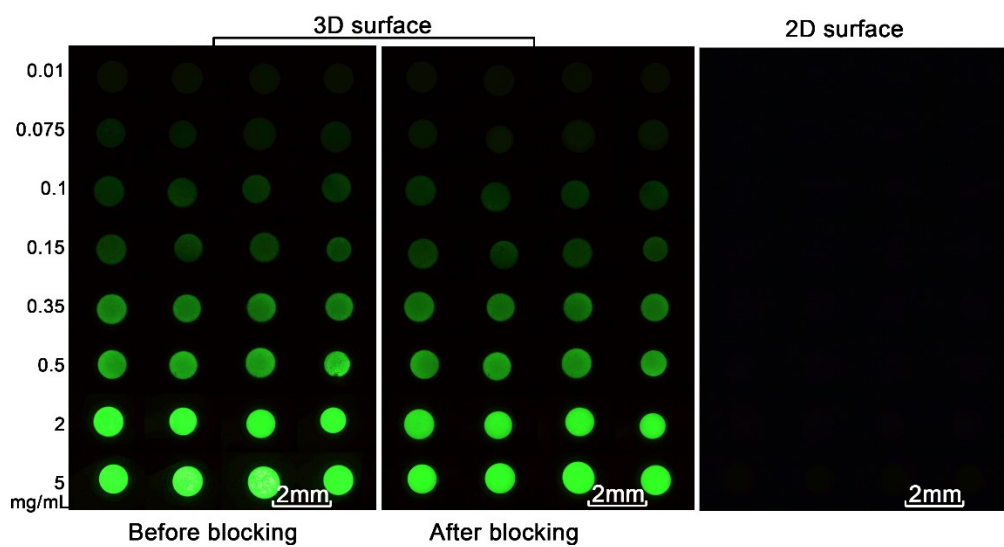


Figure S9 Fluorescence images of PSMBDA₃₀ PBS solution modified PC film (3D surface), and PSMBDA₃₀ aqueous solution modified PC film (2D surface) under different FITC-IgG concentrations.