

## Supplementary Information

### Headspace Solid-phase Microextraction Comprehensive 2D Gas Chromatography–Time of Flight Mass Spectrometry (HS-SPME-GC × GC–TOFMS) for Origin Traceability of the Genus *Hymenaea* Resinites

Xiaopeng SU<sup>#</sup>, Jing YU<sup>#</sup>, Zhaotong SHI, Yamei WANG<sup>\*</sup>, Yan LI<sup>\*</sup>

<sup>1</sup>*Gemmological Institute, China University of Geosciences, Wuhan 430074, China*

<sup>2</sup>*Hubei Engineering Research Centre of Jewellery, Wuhan 430074, China*

Corresponding authors: [yanli@cug.edu.cn](mailto:yanli@cug.edu.cn); [wangym@cug.edu.cn](mailto:wangym@cug.edu.cn)

<sup>#</sup> *These authors contributed equally to the work*

The supplementary data file includes:

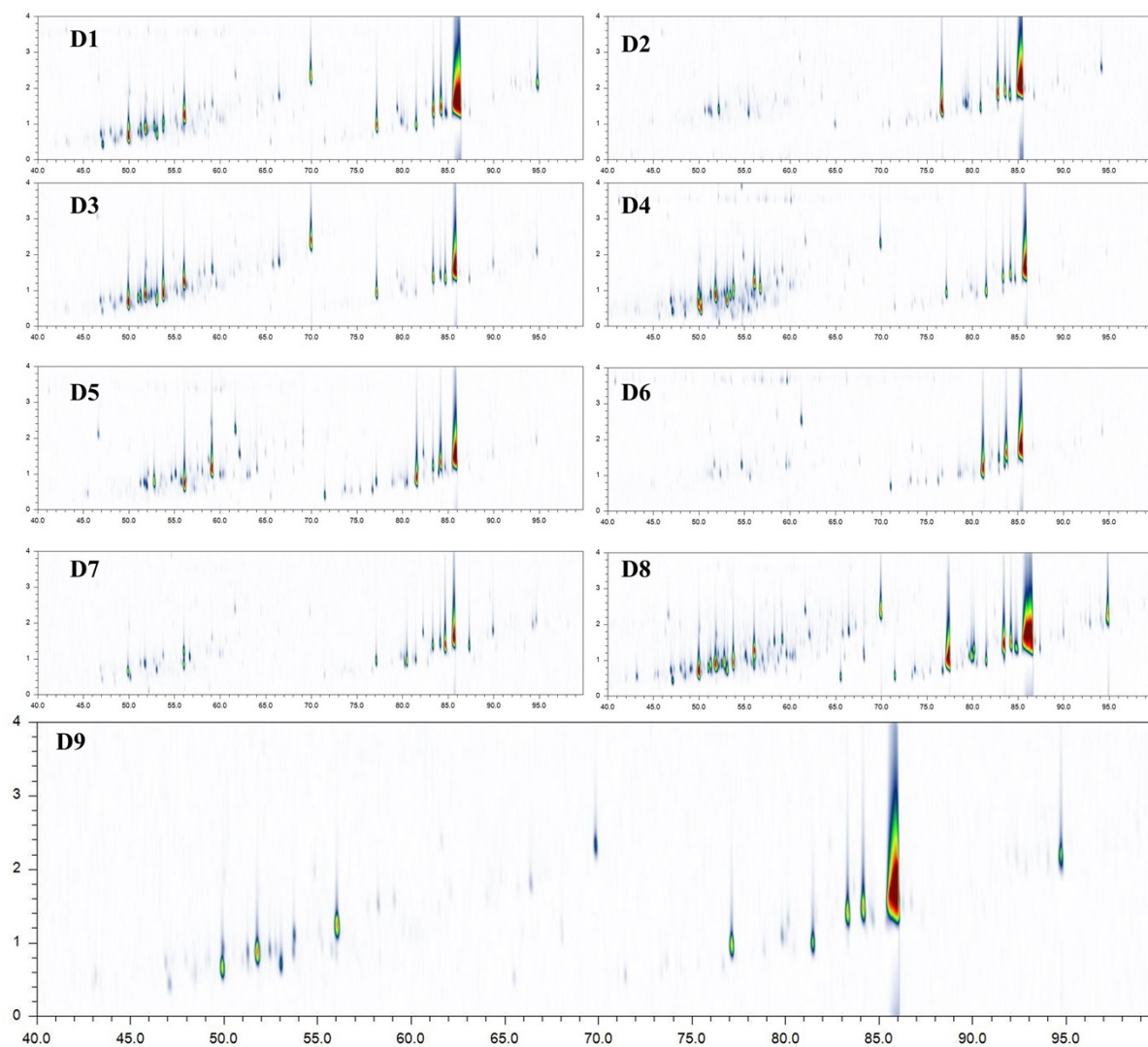
**Supplementary Table. S1:** Key biomarkers for distinguishing the different groups of copal and amber.

**Supplementary Fig. S1:** 2D Chromatograms from all samples of Dominican amber.

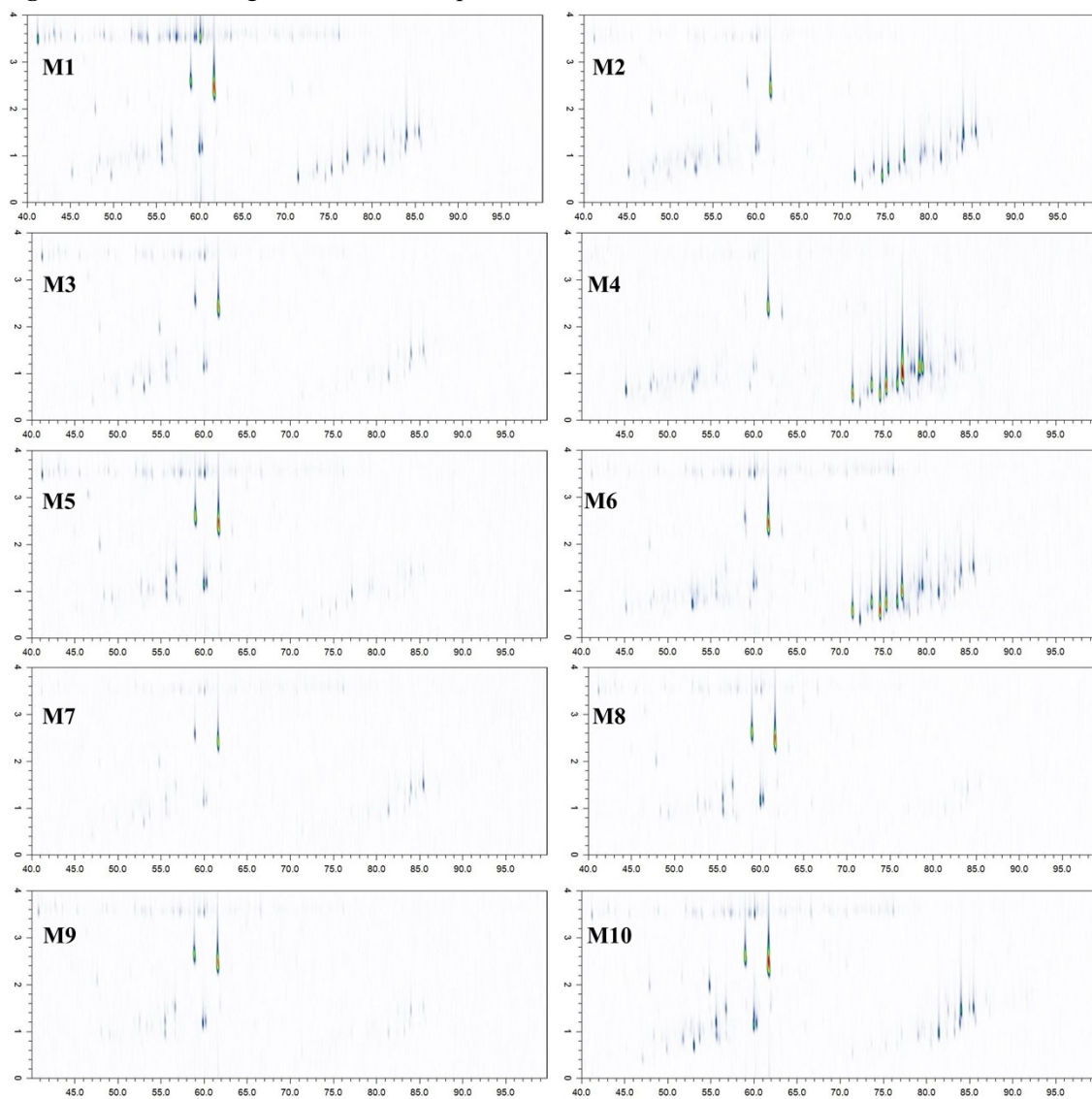
**Supplementary Fig. S2:** 2D Chromatograms from all samples of Mexican amber.

**Supplementary Fig. S3:** 2D Chromatograms from all samples of Colombian copal.

**Fig. S1:** 2D Chromatograms from all samples of Dominican amber.



**Fig. S2:** 2D Chromatograms from all samples of Mexican amber.



**Fig. S3:** 2D Chromatograms from all samples of Colombian copal.

